

GENERAL NOTES

1. APPROXIMATE LOCATION OF EXISTING MAINS ARE SHOWN. THE CONTRACTOR SHALL TAKE ALL NECESSARY PRECAUTIONS TO PROTECT EXISTING SERVICES AND MAINTAIN UNINTERRUPTED SUPPLY. ANY DAMAGE INCURRED SHALL BE REPAIRED IMMEDIATELY.
2. ALL PIPE ELEVATIONS SHOWN ARE INVERT  $\text{Ⓢ}$  ELEVATIONS.
3. THE CONTRACTOR SHALL LOCATE EXISTING UTILITIES A MINIMUM OF TWO WEEKS IN ADVANCE OF CONSTRUCTION OPERATIONS IN VICINITY OF UTILITIES.
4. FOR ALL STANDARD DETAILS SEE STANDARDS BOUND IN SPECIFICATIONS.
5. THE CONTRACTOR SHALL PROVIDE A JOINT IN ALL SEWER MAINS WITHIN 2'-0" OF EXTERIOR MANHOLE WALLS.
6. ALL HORIZONTAL AND VERTICAL CONTROLS ARE BASED ON MARYLAND STATE DATUM.
7. ALL MANHOLES SHALL BE 4'-0" INSIDE DIAMETER UNLESS OTHERWISE NOTED.
8. ALL WATER MAINS TO HAVE A MIN. OF 3'-1/2' COVER UNLESS OTHERWISE NOTED.
9. BLOCK ALL FITTINGS WITH CONCRETE, SEE STANDARDS BOUND IN SPECIFICATIONS.
10. BUILD ALL MANHOLES TO EXISTING GRADE UNLESS OTHERWISE NOTED.
11. GROUND TO BE ROUGH GRADED BEFORE CONSTRUCTION OF MANHOLES IN CUT AND FILL AREAS.
12. ALL FIRE HYDRANTS SHALL BE STRAPPED TO TEES AND SHALL BE BUTTRESSED WITH CONCRETE IN ACCORDANCE WITH STANDARD DETAILS.
13. CLEAR ALL UTILITIES BY A MINIMUM OF 6 INCHES.
14. ALL SEWERS SHALL BE V.C.P.X., C.S.P.X. OR A.C.P. CLASS 2400, UNLESS OTHERWISE NOTED.
15. WHERE SEWER SERVICE CONNECTIONS ENTER MANHOLES, INVERTS SHALL BE CHANNELIZED TO ACCOMMODATE FLOW.
16. PROFILE STATIONS SHALL BE ADJUSTED AS NECESSARY TO CONFORM TO PLAN DIMENSIONS.

# COLUMBIA

HOWARD COUNTY, MARYLAND

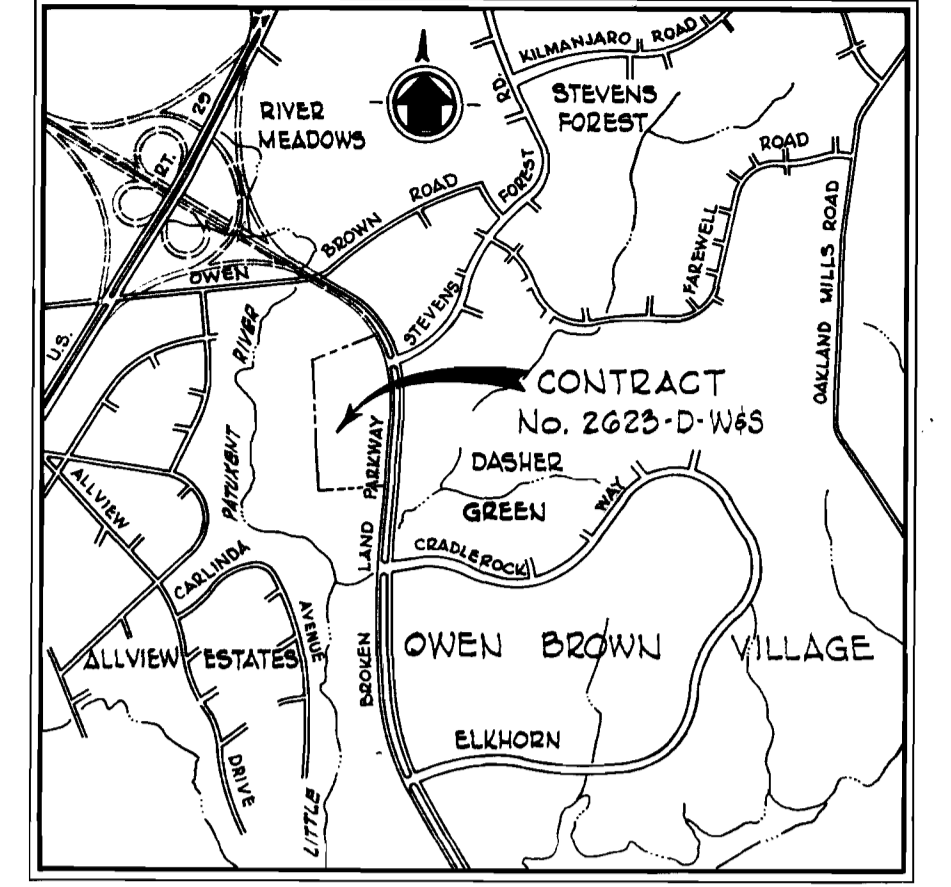
6TH ELECTION DISTRICT

## CONTRACT NO. 2623-D-W&S WATER AND SEWER EXTENSIONS

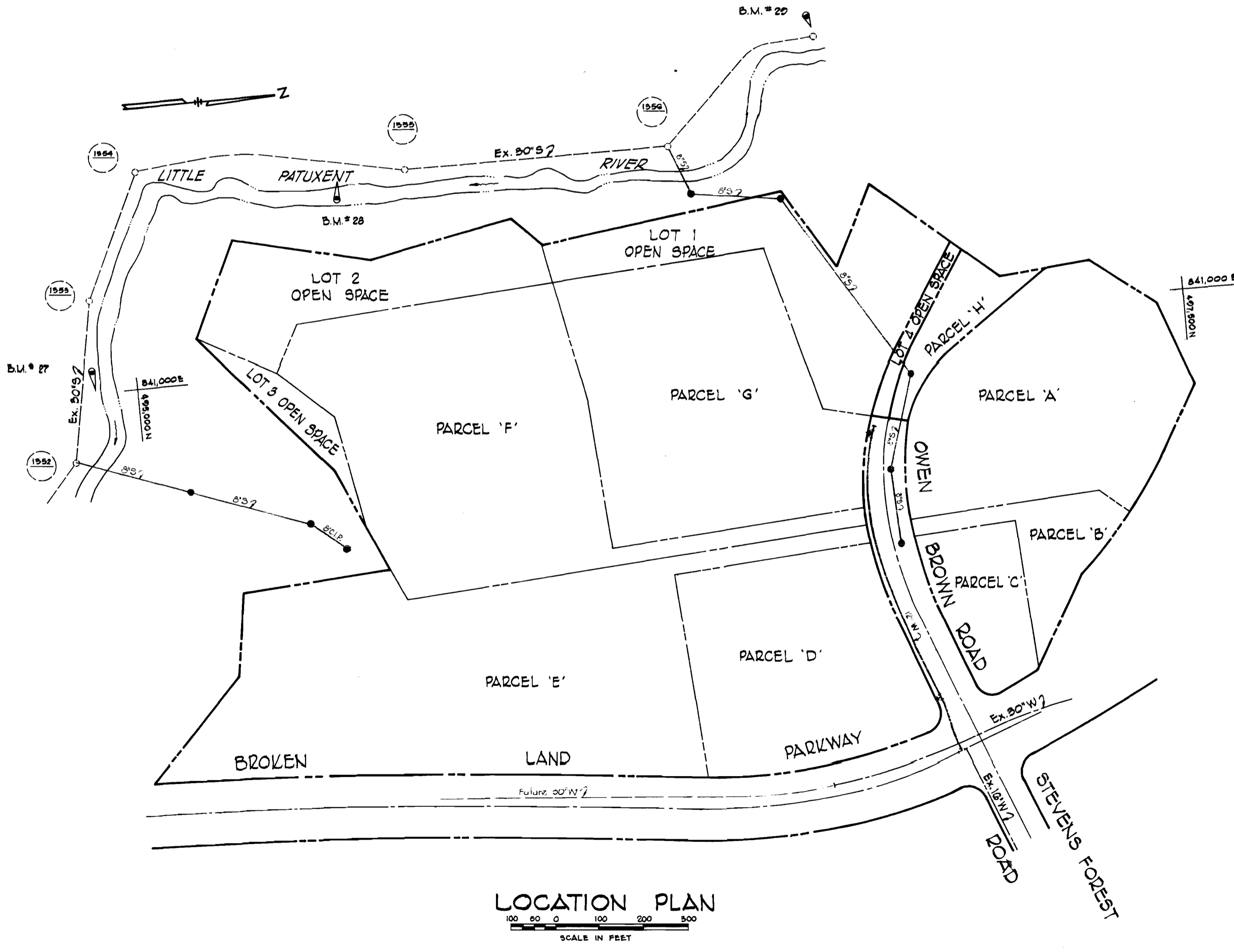
VILLAGE OF OWEN BROWN  
SECTION 5, AREA 1

OWNER & DEVELOPER

**THE HOWARD RESEARCH AND DEVELOPMENT CORP.**  
**COLUMBIA, MARYLAND**



VICINITY MAP  
Scale: 1" = 2,000'



BENCH MARKS	
B.M. # 27	Elev. 284.24 R.R. Spike on side of 20" Oak 30' ± North of Sta. 1+70 ± Bet. Manholes # 1352 & # 1355.
B.M. # 25	Elev. 284.86 R.R. Spike on side of 30" Twin Oak 45' ± East of Sta. 4+87 ± Bet. Manholes # 1354 & # 1355.
B.M. # 20	Elev. 290.86 R.R. Spike on side of 30" Twin Rop 15' ± West of Manhole # 1357.

QUANTITIES	
Item	Quantity
8" Sewer	1825 L.F.
12" Water	640 L.F.
6" Water	10 L.F.
FH's	2 EA.

1/21/75  
DATE

*Robert R. Platt*  
ENGINEER REG. NO. 5407

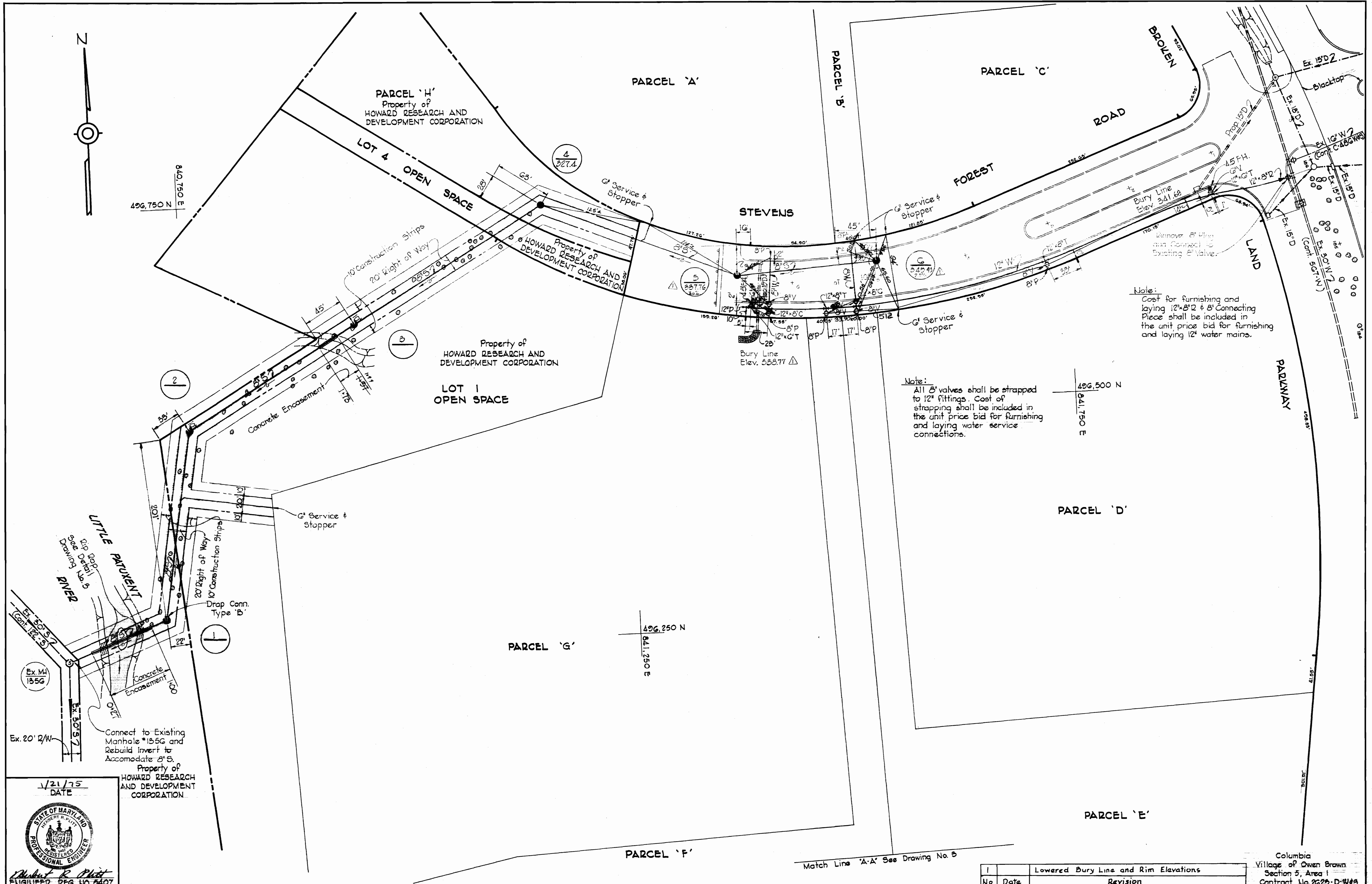
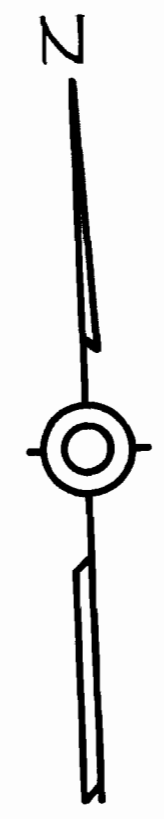
<b>CENTURY ENGINEERING, INC.</b> CONSULTING ENGINEERS - PLANNERS TOWSON, MARYLAND	DEPARTMENT OF PUBLIC WORKS HOWARD COUNTY, MARYLAND 3-13-75 DATE <i>W. O. Falbert</i> CHIEF - BUREAU OF ENGINEERING	CONTRACT NO. 2623-D-W&S TITLE SHEET	COLUMBIA VILLAGE OF OWEN BROWN SECTION 5, AREA 1 ELECTION DISTRICT GUILFORD NO. 6 DRAWING NO. 1 OF 4 SCALE AS SHOWN
---	---	--	--

Columbia  
Village of Owen Brown  
Section 5, Area 1  
Contract No. 2623-D-W&S

FEBRUARY 11, 1975

AS-Built TRC 6/26/81

WS 623-W&S



1/21/75  
DATE

STATE OF MARYLAND  
REGISTERED PROFESSIONAL ENGINEER

*Robert R. Platt*  
ENGINEER REG. NO. 6407

**CENTURY ENGINEERING, INC.**  
CONSULTING ENGINEERS - PLANNERS  
FURNING, MARYLAND

DEPARTMENT OF PUBLIC WORKS  
HOWARD COUNTY, MARYLAND

3-13-75  
DATE

*W O Falbert*  
CHIEF - BUREAU OF ENGINEERING

CONTRACT NO. 2623-D-W&S

PLAN OF  
WATER AND SEWER MAINS

COLUMBIA  
VILLAGE OF OWEN BROWN  
SECTION 5, AREA I  
ELECTION DISTRICT GUILFORD NO. 6

DRAWING  
NO. 2  
OF 4

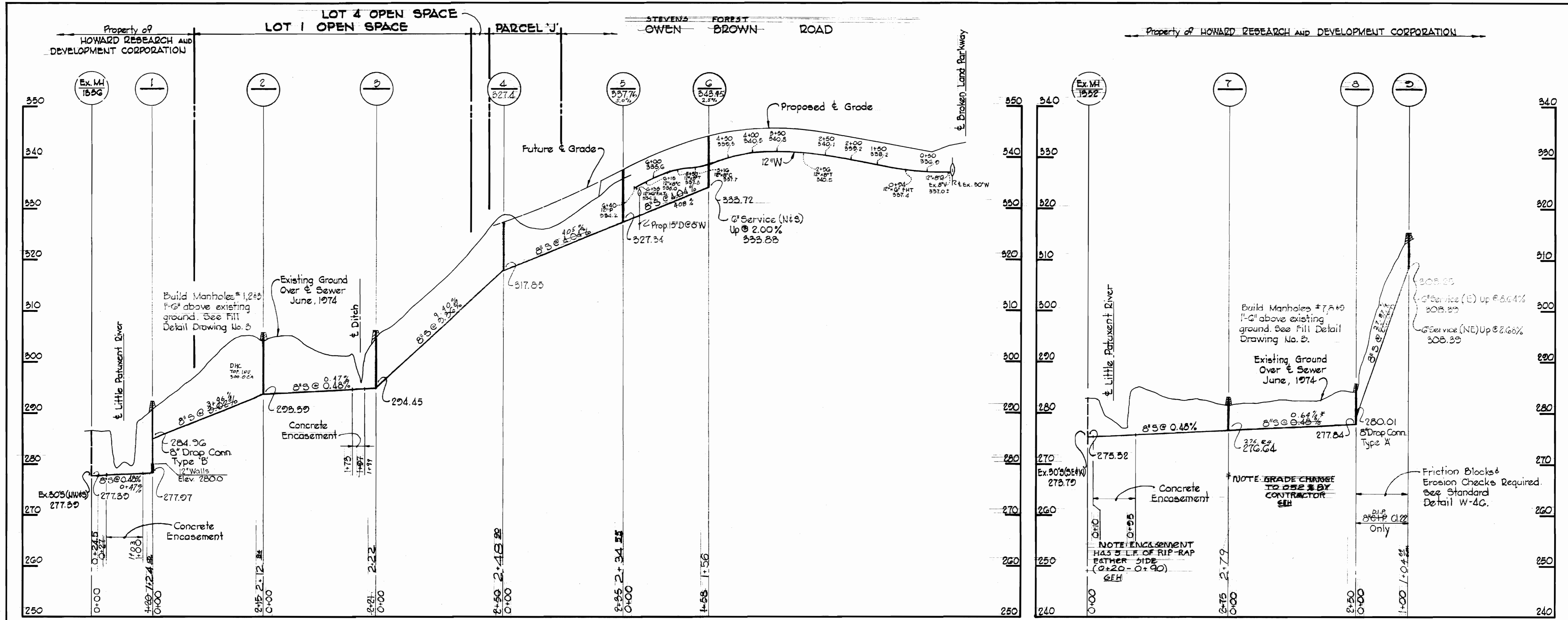
SCALE  
1"=50'

No.	Date	Revision
1		Lowered Bury Line and Rim Elevations

Columbia  
Village of Owen Brown  
Section 5, Area I  
Contract No. 2623-D-W&S







1/21/75  
DATE

STATE OF MARYLAND  
ROBERT R. PLATT  
REGISTERED PROFESSIONAL ENGINEER  
ENGINEER - REG. NO. 5407

CENTURY ENGINEERING INC.  
CONSULTING ENGINEERS - PLANNERS  
HYDRA-ENGINEERS

DEPARTMENT OF PUBLIC WORKS  
HOWARD COUNTY, MARYLAND  
3-13-75  
DATE

W. O. Falbert  
CHIEF - BUREAU OF ENGINEERING

CONTRACT NO. 623-D-W&S

PROFILES OF  
WATER AND SEWER MAINS

COLUMBIA  
VILLAGE OF OWEN BROWN  
SECTION 5, AREA I  
ELECTION DISTRICT GUILFORD NO. 6

DRAWING NO. 4 OF 4  
SCALE H: 1"=100' V: 1"=10'

FEBRUARY 11, 1975

AS-Built JRC 6/26/81