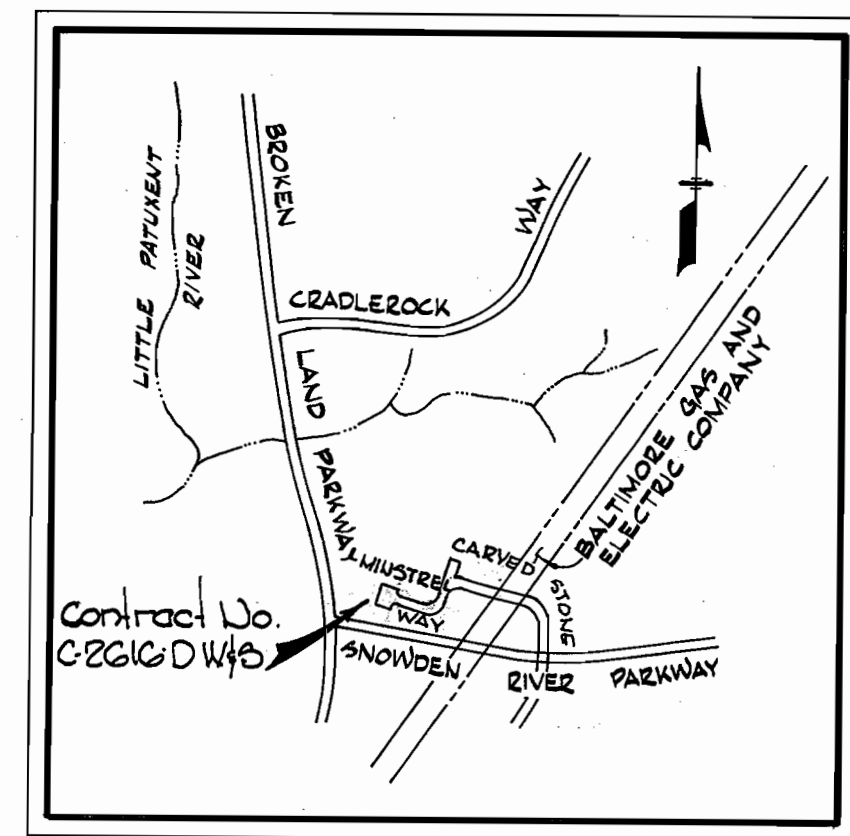
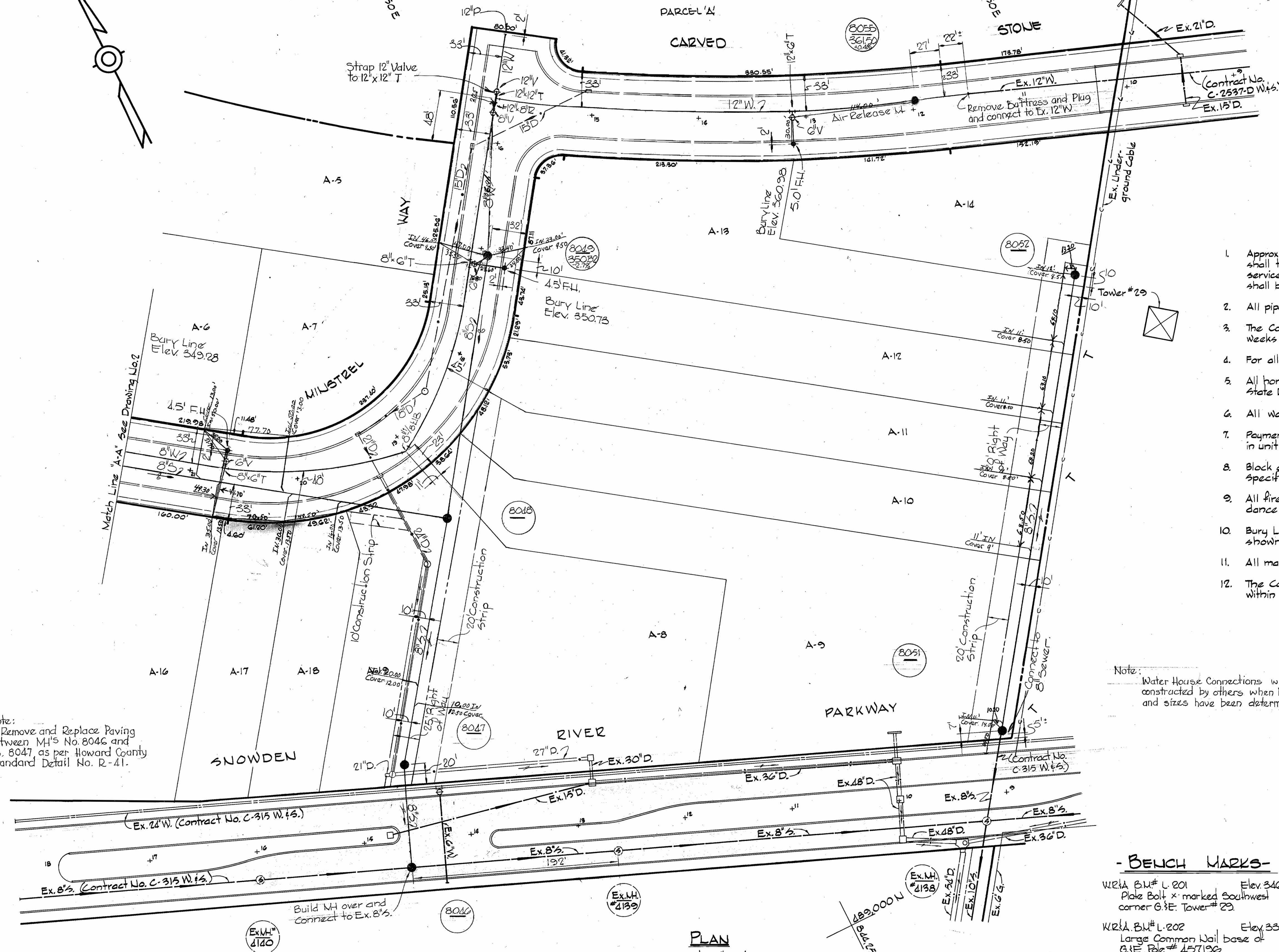


VILLAGE OF OWEN BROWN
SECTION 2 AREA 1



VICINITY MAP
Scale: 1" = 2,000'



GENERAL NOTES

1. Approximate location of existing mains are shown. The Contractor shall take all necessary precautions to protect existing mains and services and maintain uninterrupted supply. Any damage incurred shall be repaired immediately.
2. All pipe elevations shown are invert elevations.
3. The Contractor shall locate existing utilities a minimum of two weeks in advance of construction operations in vicinity of utilities.
4. For all standard details see standards bound in specifications.
5. All horizontal and vertical controls are based on Maryland State Datum.
6. All water mains to have a minimum of 3/2' cover.
7. Payment for strapping, fire hydrants and valves will be included in unit price bid for furnishing and laying water mains.
8. Block all fittings with concrete. See standards bound in specifications.
9. All fire hydrants shall be strapped and buttressed in accordance with standard details.
10. Bury Line elevations on fire hydrants shall be set to elevations shown on drawings.
11. All manholes to be 4'-0" inside diameter.
12. The Contractor shall provide a joint in all sewer mains within 2'-0" of exterior manhole walls.

Note: Water House Connections will be constructed by others when location and sizes have been determined.

QUANTITIES	
Item	Quantities
8" Sewer	2,375 L.F.
12" Water	500 L.F.
8" Water	900 L.F.
8" Water	100 L.F.
Fire Hydrants	4

- BENCH MARKS -

WM&A BM# L-201 Elev. 346.81
Plate Bolt x marked Southwest corner G.3E. Tower # 29

WM&A BM# L-202 Elev. 331.29
Large Common Nail base of G.1E. Pole # 457196



Kenneth A. McLeod
Village of Owen Brown
Parcel A - Section 2, Area 2
Contract No. C-2616-DW&S

PLAN
Scale: 1" = 30'

WHITMAN, REQUARDT & ASSOCIATES
ENGINEERS
1304 ST. PAUL ST.
BALTIMORE, MARYLAND

DEPARTMENT OF PUBLIC WORKS
HOWARD COUNTY, MARYLAND
DATE: 9-24-74
CHIEF-BUREAU OF ENGINEERING

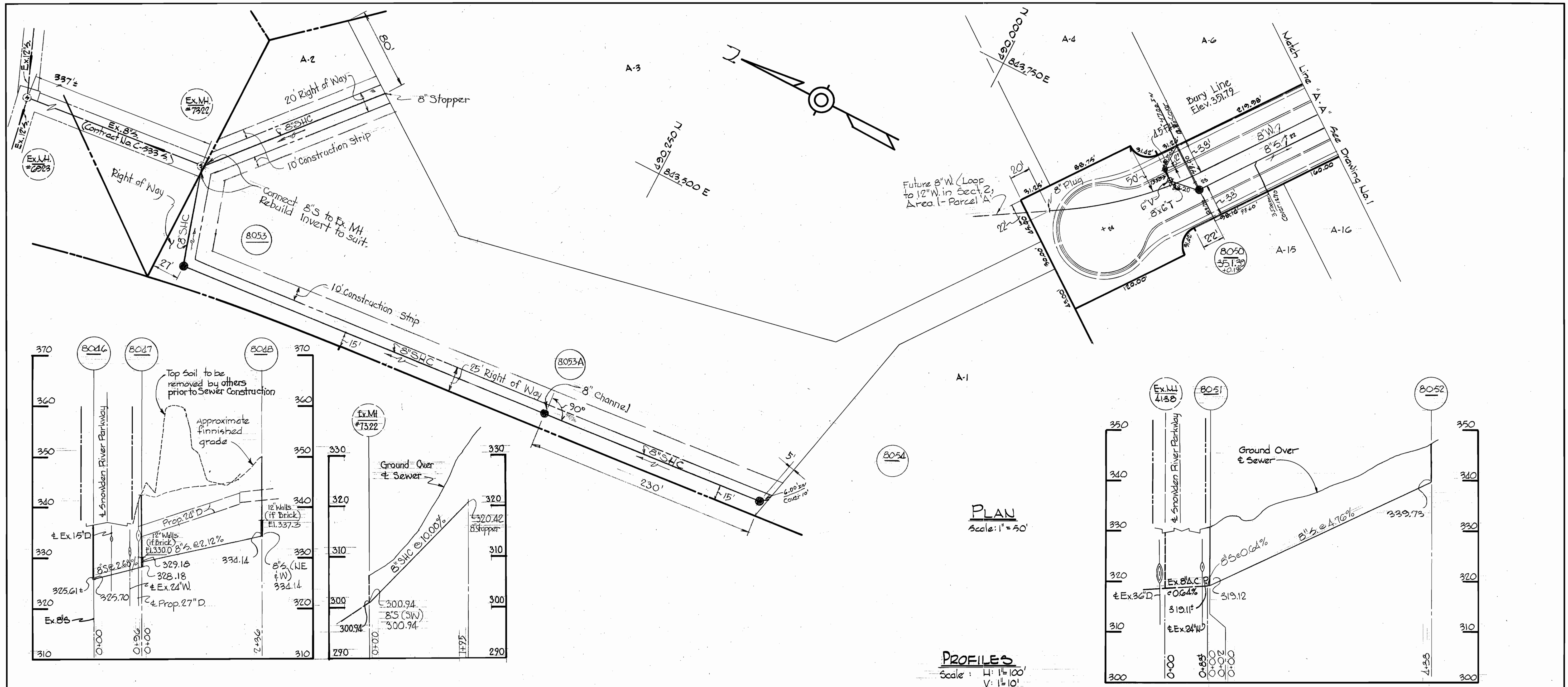
CONTRACT NO. C-2616-DW&S

PLAN AND LOCATION MAP OF
WATER AND SEWER MAINS

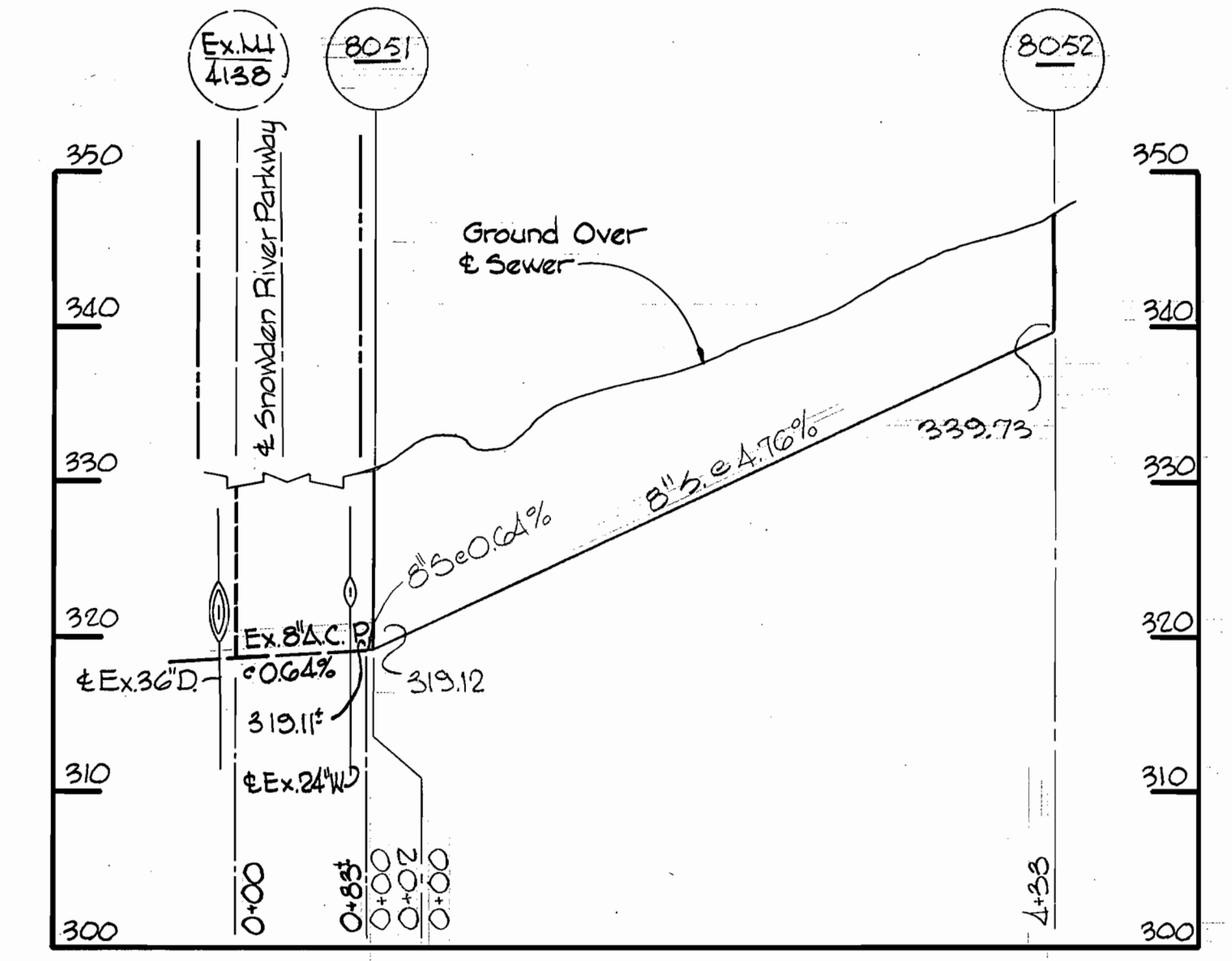
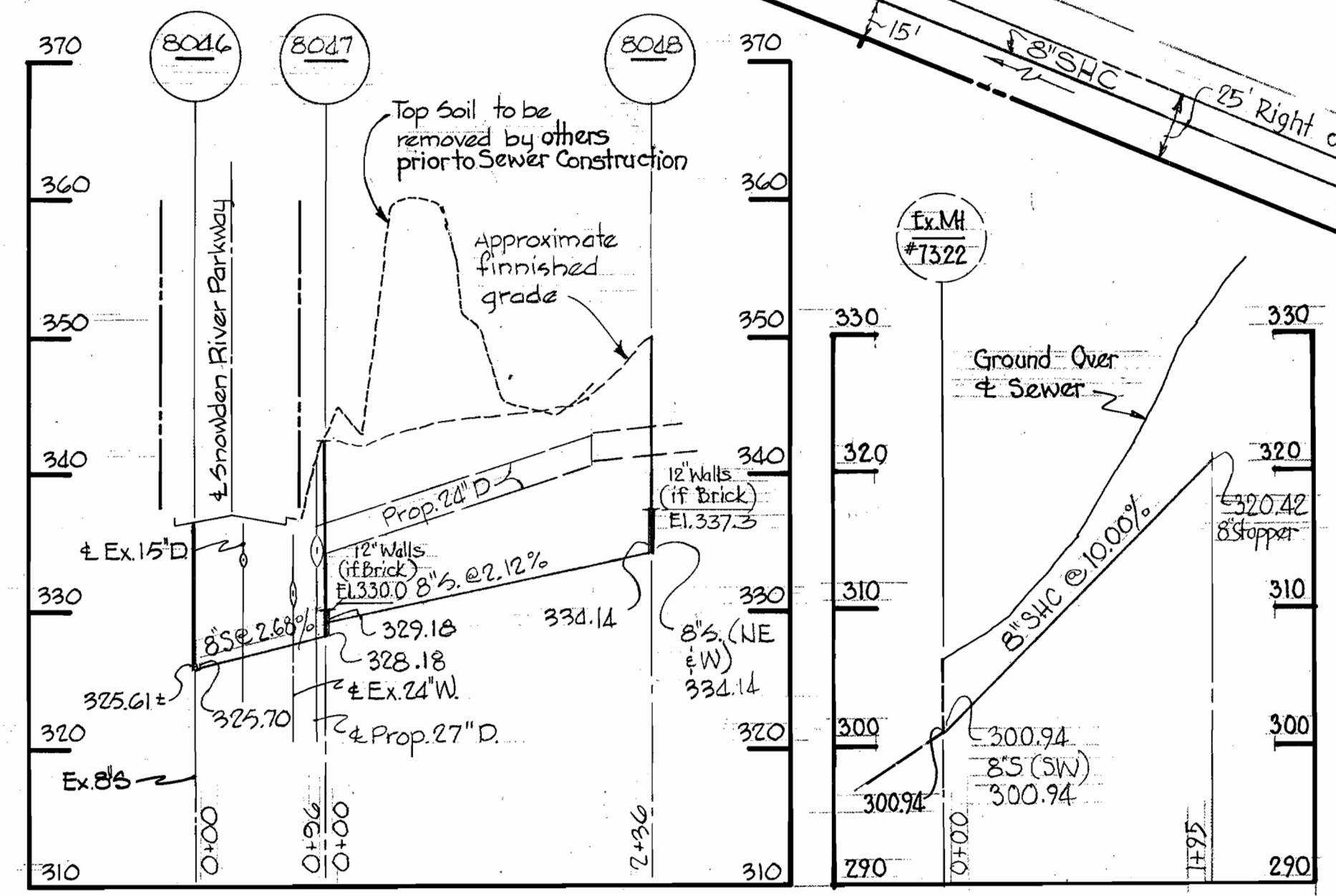
COLUMBIA
VILLAGE OF OWEN BROWN - SECTION 2, AREA 2
RESUBDIVISION PARCEL A
ELECTION DISTRICT GUILFORD No. 6

DRAWING NO. 1 OF 2
SCALE AS SHOWN
August 12, 1974

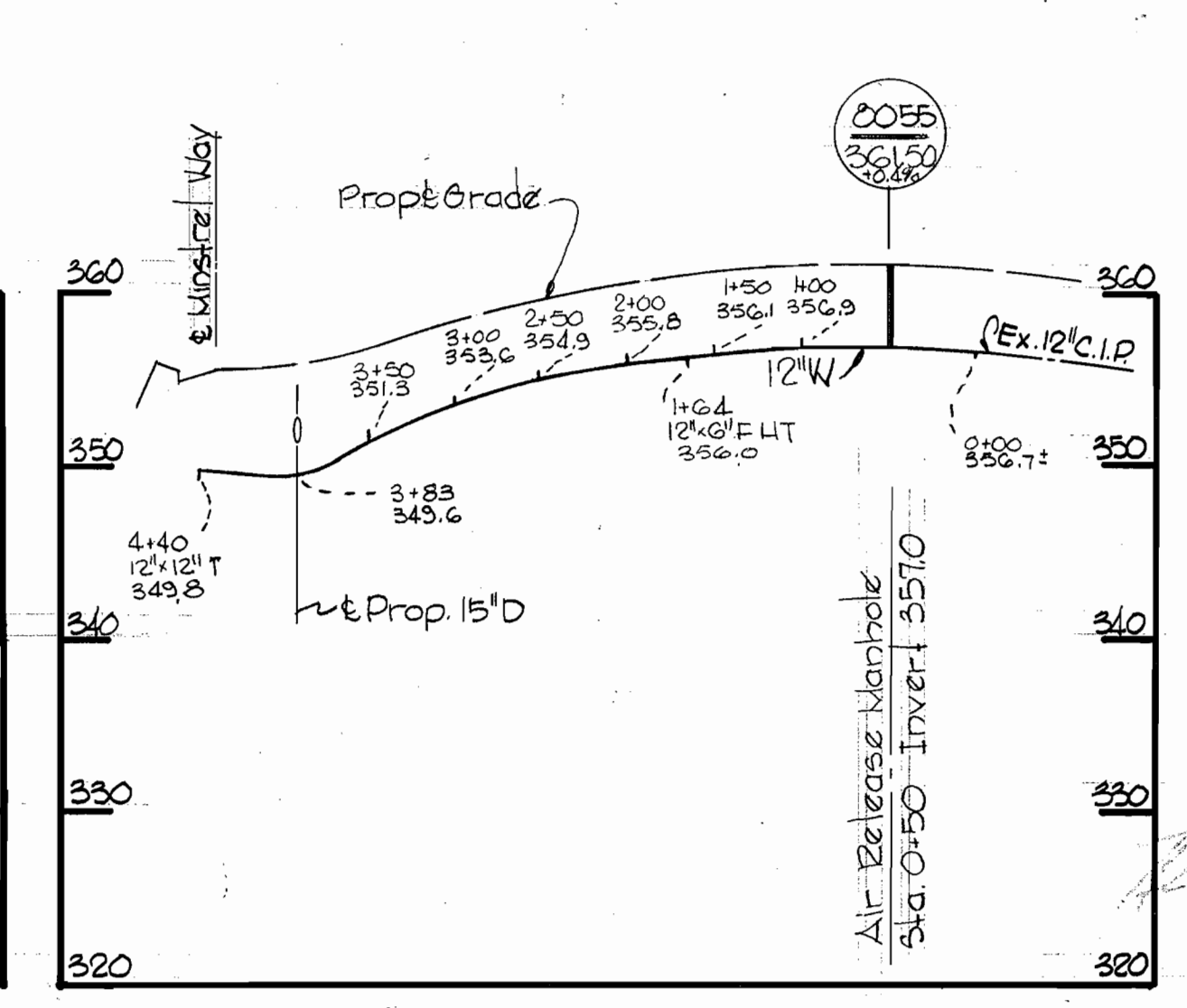
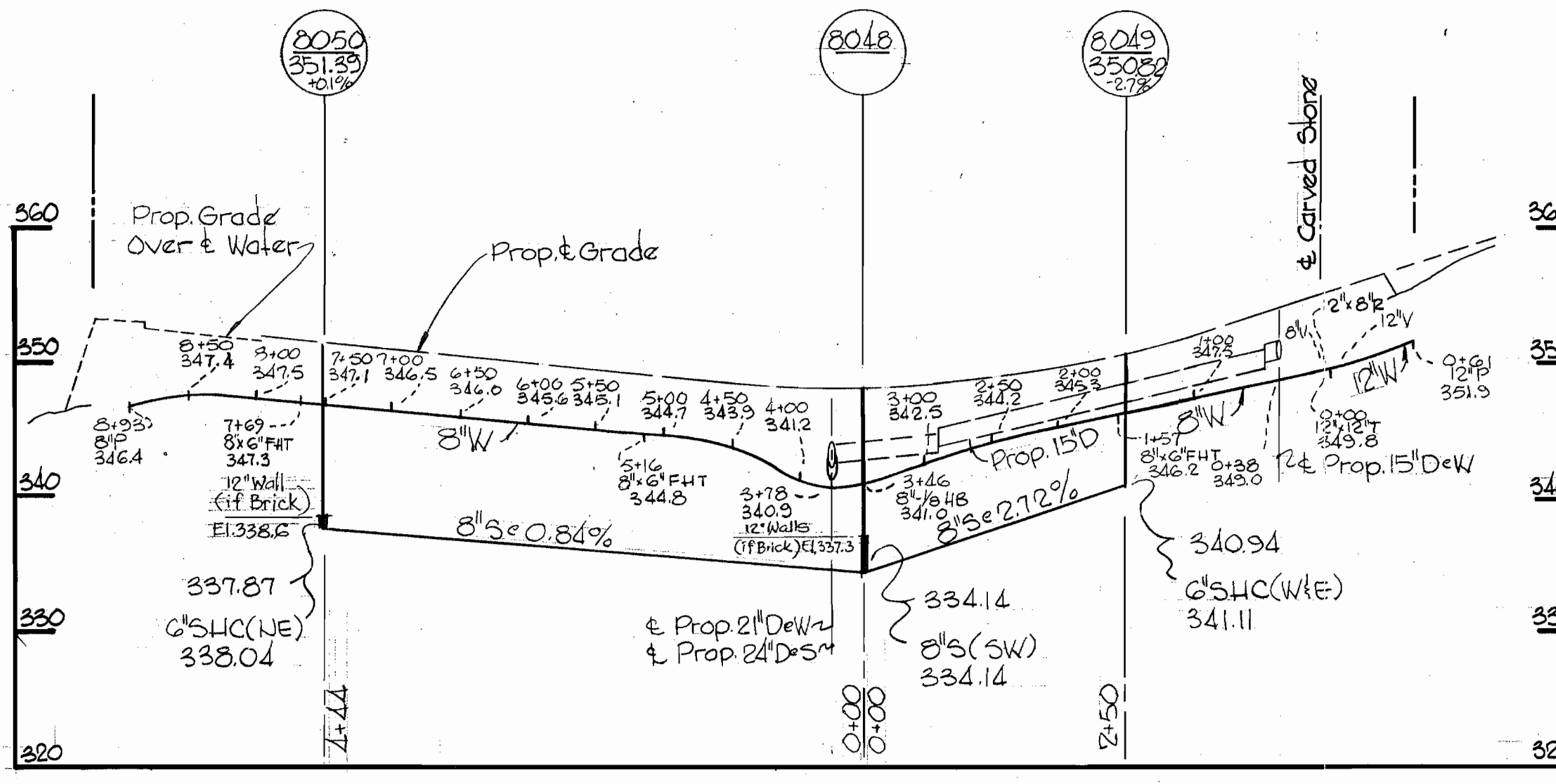
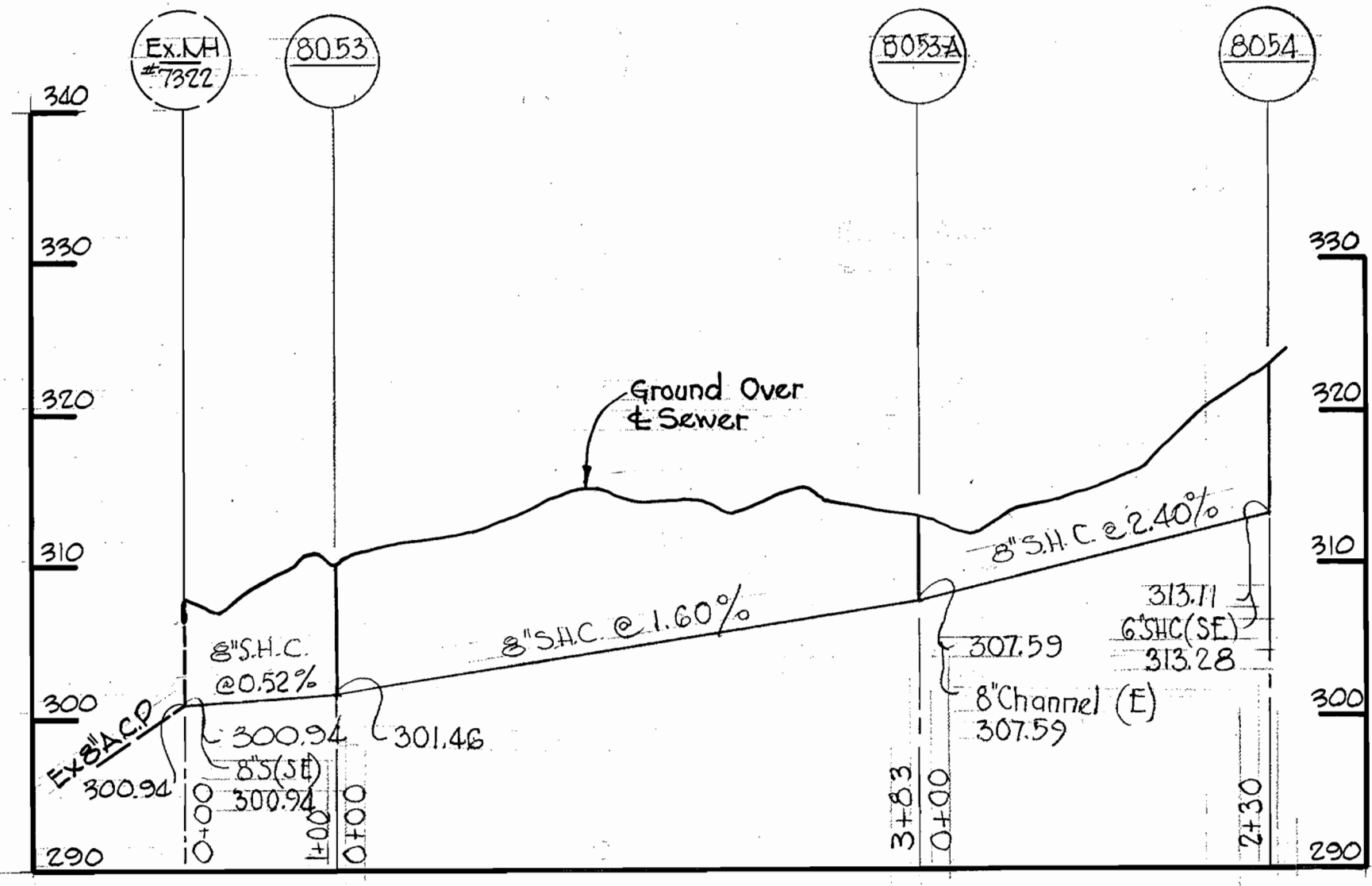
WS 616 W&S/1



PLAN
Scale: 1" = 30'



PROFILES
Scale: H: 1" = 100'
V: 1" = 10'



Village of Owen Brown
Parcel A, Sect. 2, Area 2
Contract No. C-2316-D W/S

<p>WHITMAN, REQUARDT & ASSOCIATES ENGINEERS 1304 ST. PAUL ST. BALTIMORE, MARYLAND</p>	<p>DEPARTMENT OF PUBLIC WORKS HOWARD COUNTY, MARYLAND 9-24-74 E. O. Albert CHIEF BUREAU OF ENGINEERING</p>	<p>CONTRACT NO. C-2316-D W/S</p>	<p>PLAN, PROFILE & DETAILS OF WATER AND SEWER MAINS</p>	<p>COLUMBIA VILLAGE OF OWEN BROWN - SECTION 2, AREA 2 RESUBDIVISION PARCEL A ELECTION DISTRICT GUILFORD No. 6</p>	<p>DRAWING NO. 2 OF 2 SCALE AS SHOWN 21-0, 20-0</p>
---	--	----------------------------------	---	---	---

W.O. 6758-2

AS-BUILT 2-16-75

August 12, 1974

WS 616 W&S/2

BRITN INC. 44-510 1839Z