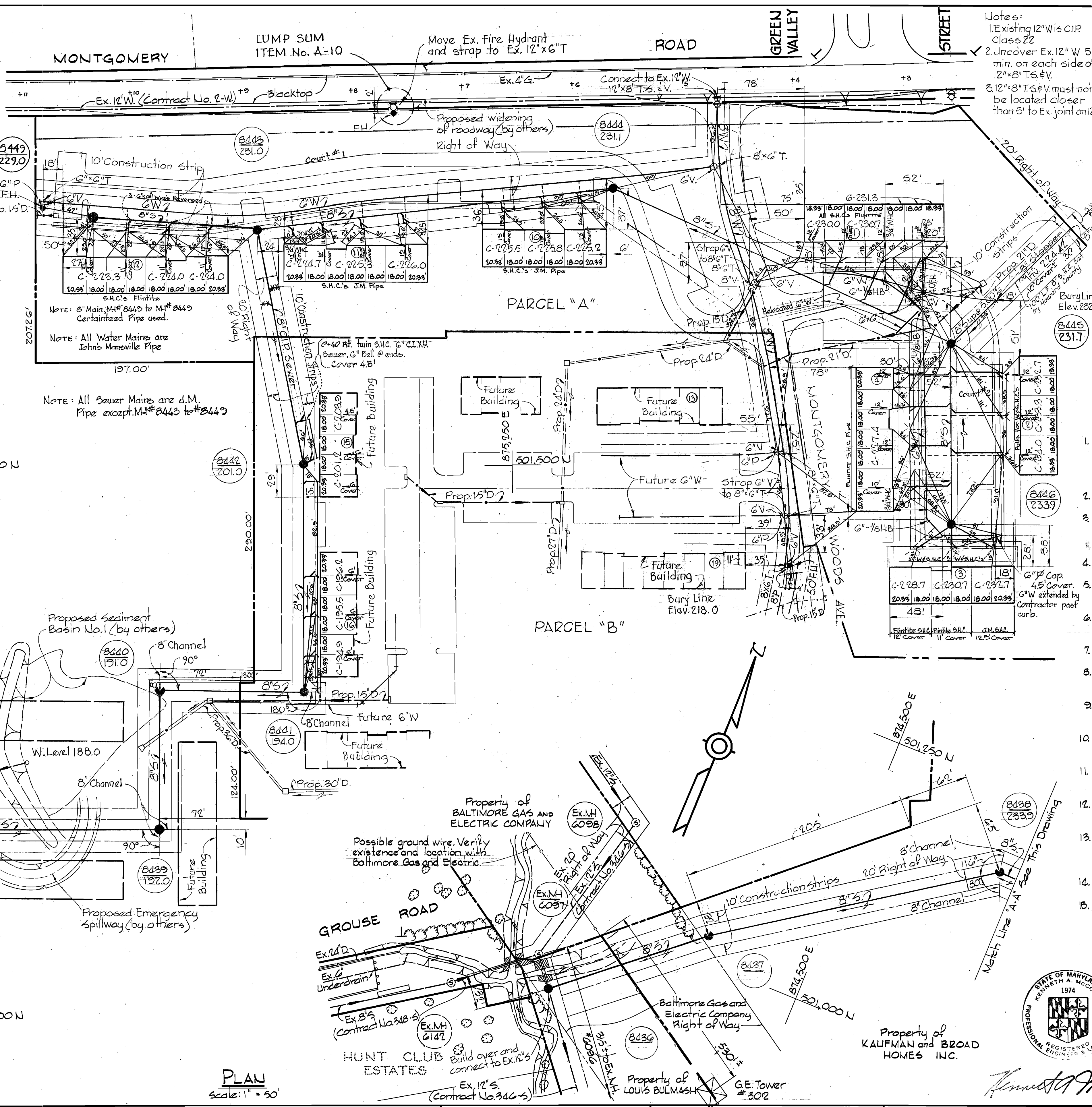
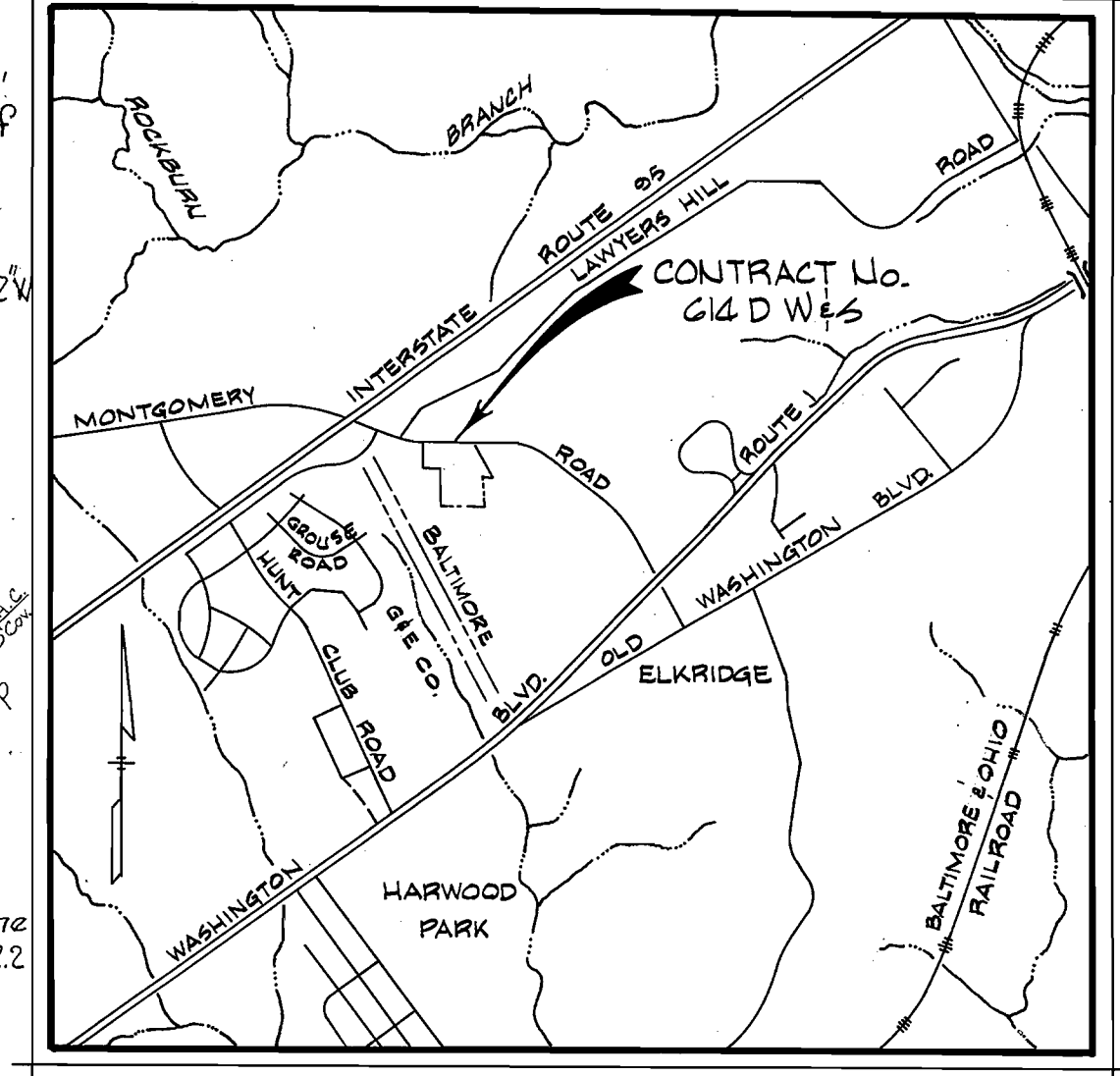


Howard County B.M. # 6617007 Elev. 223.084  
Concrete monument located on the N. side of Rt. #1, west of Montgomery Rd.  
B.M. # W-120 Elev. 232.57  
R.R. spike in G. & E. Pole # 371104 on the south side of Montgomery Road 300' NW of intersection I-95 and Montgomery Road.



- Notes:
- Existing 12" W is CIP Class 22
  - Uncover Ex. 12" W 5' min. on each side of 12" x 8" T.S. & V.
  - 12" x 8" T.S. & V. must not be located closer than 5' to Ex. joint on 12" W

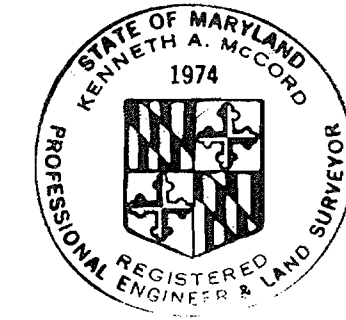


VICINITY MAP  
Scale: 1" = 2,000'

GENERAL NOTES

- Approximate location of existing mains are shown, the Contractor shall take all necessary precautions to protect existing mains and services and maintain uninterrupted supply. Any damage incurred shall be repaired immediately.
- All pipe elevations shown are invert elevations.
- The Contractor shall locate existing utilities a minimum of two weeks in advance of construction operations in vicinity of utilities.
- For all standard details see standards bound in specifications.
- All horizontal and vertical controls are based on Maryland State Datum.
- Existing and Original ground over Water and/or was taken from contour map by Datt, McCune & Walker Inc..
- All manholes to be 4'-0" inside diameter.
- The Contractor shall provide a joint in all sewer mains within 2'-0" of exterior manhole walls.
- All water mains to have a minimum of 3 1/2' cover unless otherwise noted.
- Block all fittings with concrete, see standards bound in specifications.
- Bury Line elevations on fire hydrants shall be set to elevations shown on drawings.
- All fire hydrants shall be strapped and buttressed in accordance with standard details.
- Cost of strapping fire hydrants and valves shall be included in unit price bid for furnishing and laying of water mains.
- All W.H.C. shall be 1" diameter unless otherwise noted.
- Trees are to be protected from damage to maximum extent. Trees located within the Construction Strip are not to be removed or damaged by the contractor.

QUANTITIES	
ITEM	QUANTITY
8" Sewer main	2,285 L.F.
6" Water main	1,070 L.F.
8" Water main	430 L.F.
Fire Hydrants	3



*Kenneth J. McLeod*

Montgomery Woods Section 1, Parcel W Contract No. 614 D W & S

NOTE:  
The Contractor shall notify the Baltimore Gas and Electric Company of Maryland prior to any construction activities in the vicinity of Gas and/or Electric facilities by calling 301-234-3691 in Baltimore, Maryland.

Property of KAUFMAN and BROAD HOMES INC.

Property of BALTIMORE GAS AND ELECTRIC COMPANY

Possible ground wire. Verify existence and location with Baltimore Gas and Electric.

HUNT CLUB ESTATES

Property of KAUFMAN and BROAD HOMES INC.

WHITMAN, REQUARDT & ASSOCIATES  
ENGINEERS  
1304 ST. PAUL ST.  
BALTIMORE, MARYLAND

DEPARTMENT OF PUBLIC WORKS  
HOWARD COUNTY, MARYLAND  
3-21-75  
W O Lubert  
CHIEF BUREAU OF ENGINEERING

CONTRACT NO. 614 D W & S

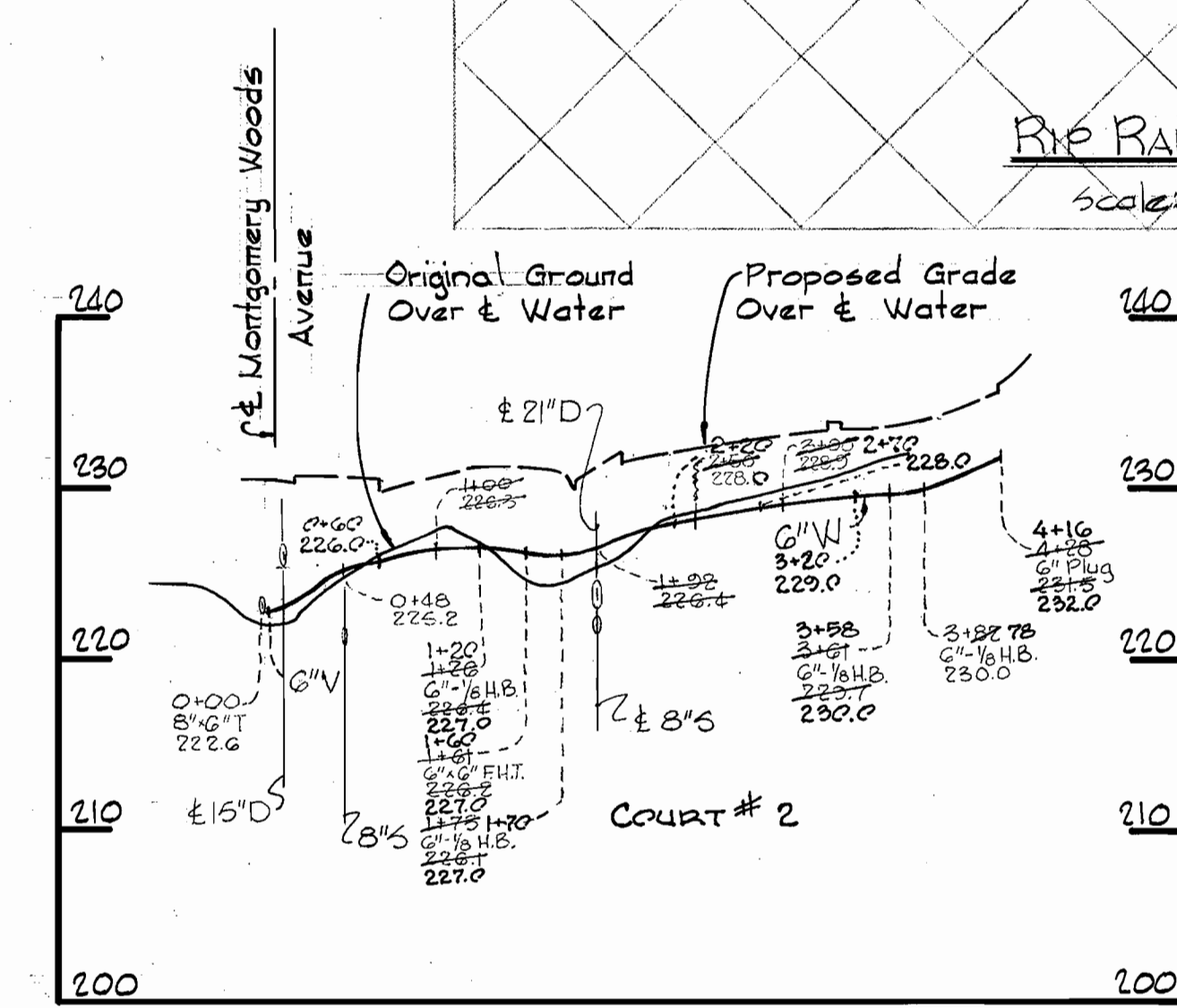
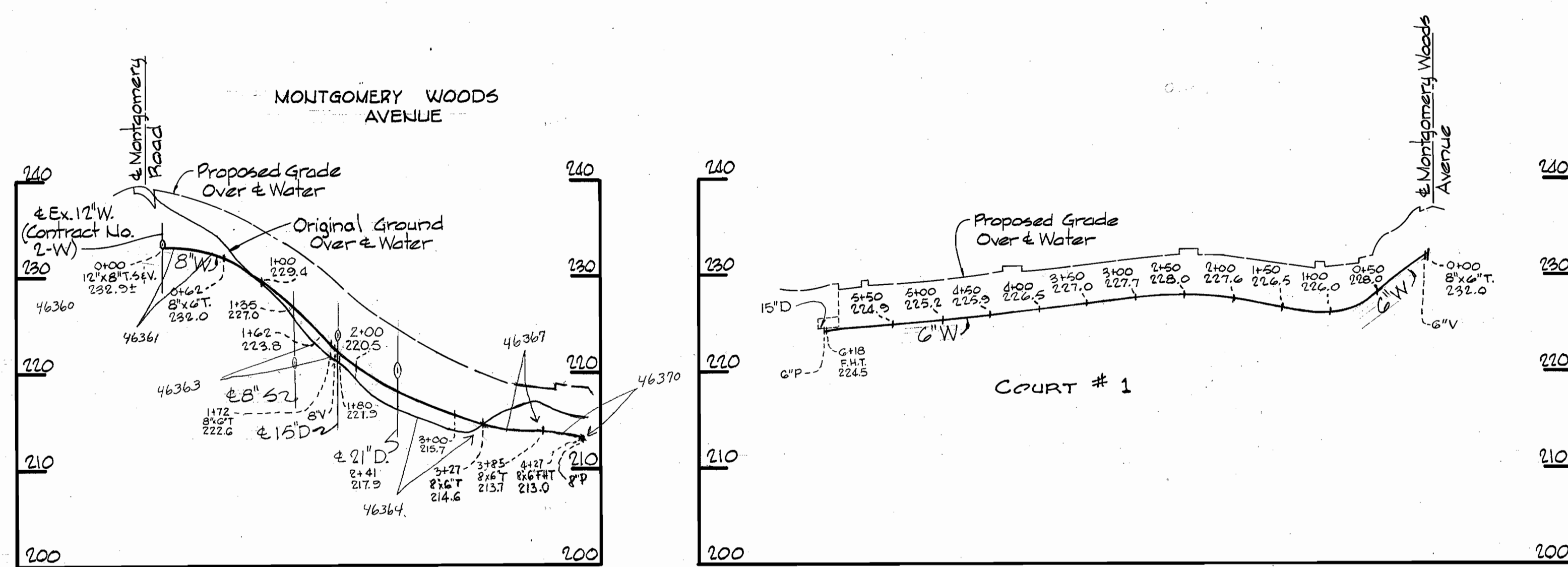
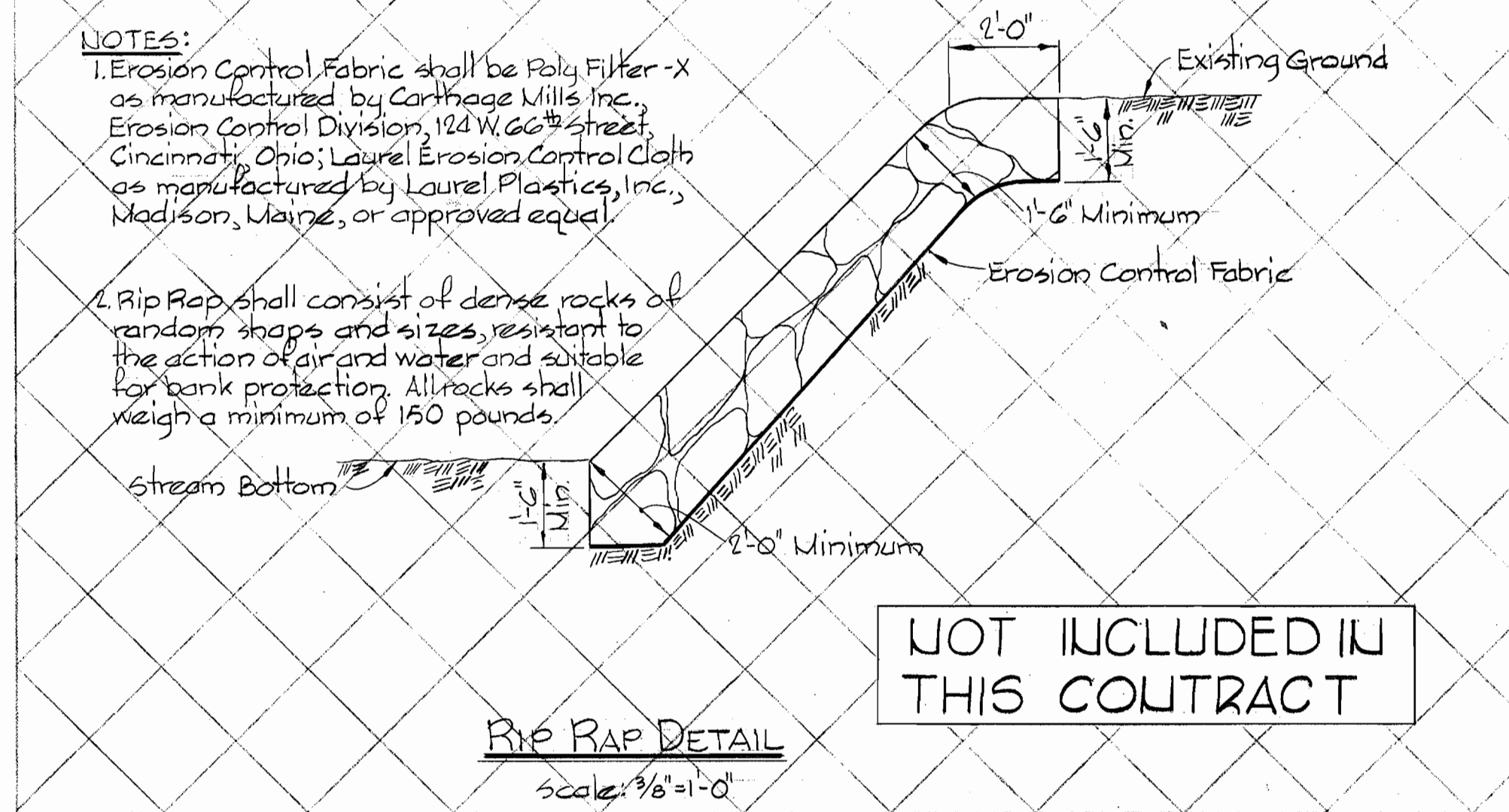
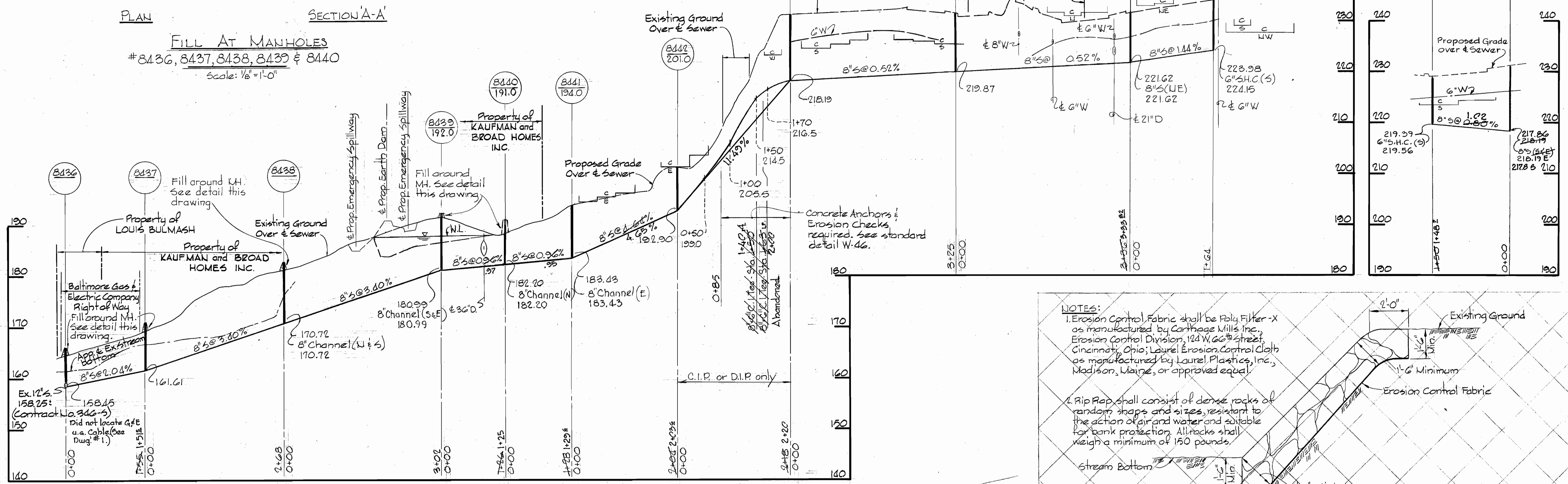
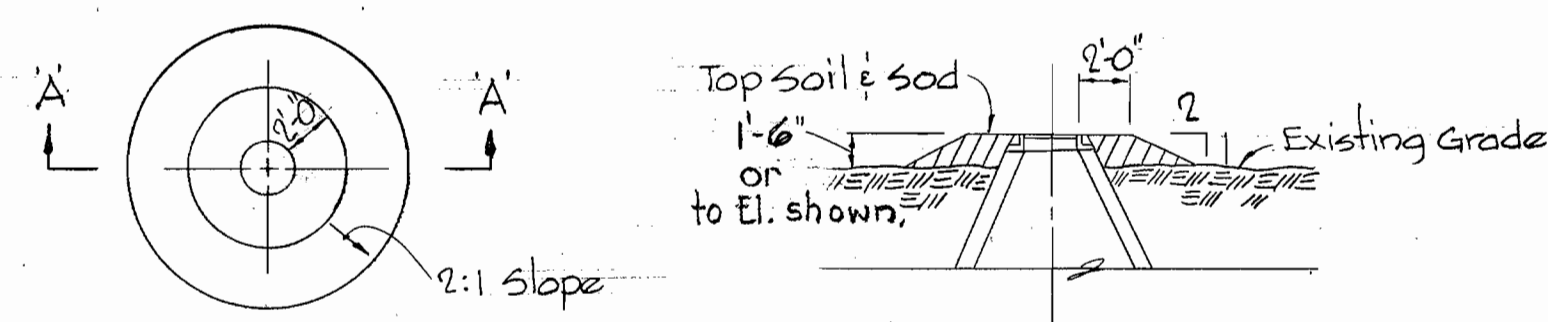
PLAN OF WATER AND SEWER MAINS

MONTGOMERY WOODS ELECTION DISTRICT ELKRIDGE No. 1

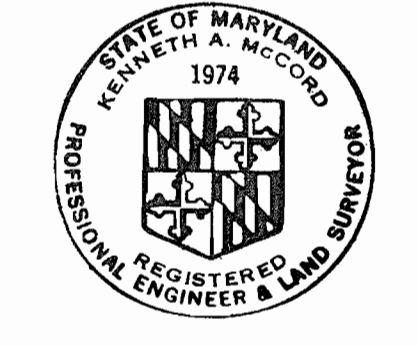
DRAWING NO. 1 OF 2 SCALE AS SHOWN

WS 614 W & S/1

PRINTING AT \$10.18342



NOTE: 6" Water staked out according to site grade plan.  
LYNCH ENGINEERS  
254-4956  
Jack Murphy



*Kenneth A. McLeod*

Montgomery Woods  
Section 1, Parcel A  
Contract No. 614 D W & S

<b>WHITMAN, REQUARDT &amp; ASSOCIATES</b> ENGINEERS 1304 ST. PAUL ST. BALTIMORE, MARYLAND	<b>DEPARTMENT OF PUBLIC WORKS</b> HOWARD COUNTY, MARYLAND 3-21-75 DATE <i>W O Libert</i> CHIEF-BUREAU OF ENGINEERING	<b>CONTRACT NO. 614 D W &amp; S</b>	<b>PROFILES AND DETAILS OF</b> <b>WATER AND SEWER MAINS</b>	<b>MONTGOMERY WOODS</b> <b>ELECTION DISTRICT ELKRIDGE No. 1</b>	<b>DRAWING</b> <b>NO. 2</b> <b>OF 2</b>	<b>SCALE</b> <b>AS</b> <b>SHOWN</b>
--	---	-------------------------------------	--	--	---	---

WS 614 W&S/2

BRUNING 44-510 10392