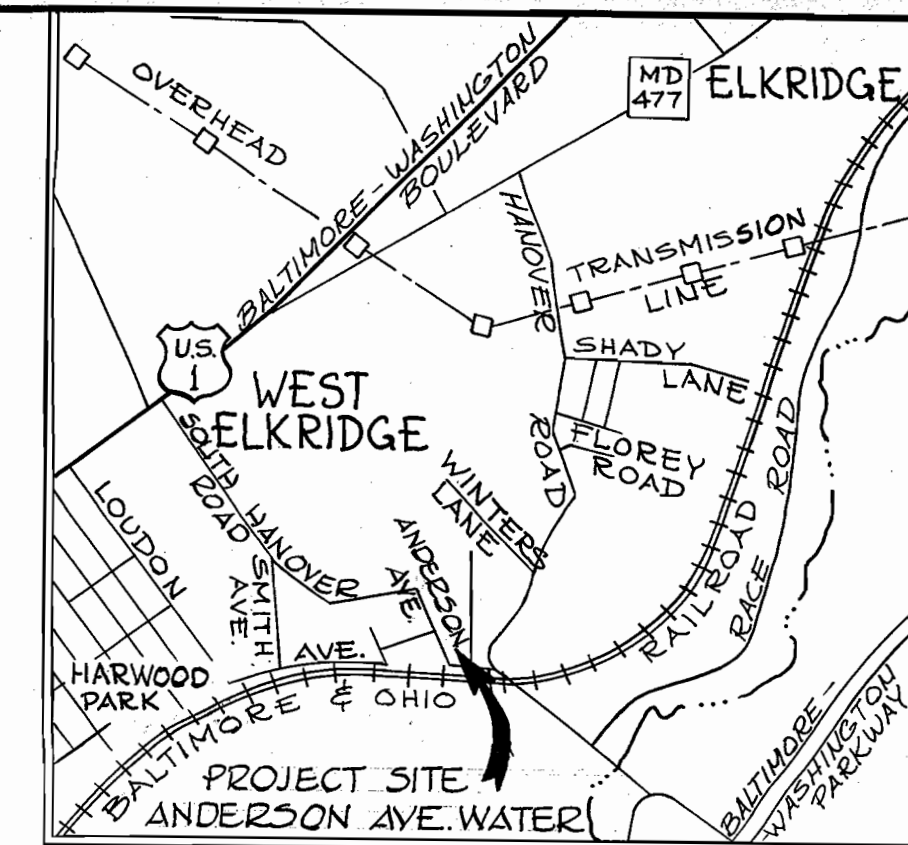


P.I. "HS-5"
R.R. Spike

Fire Hydrant Bury
Line to be set at
Existing Ground

BENCH MARKS

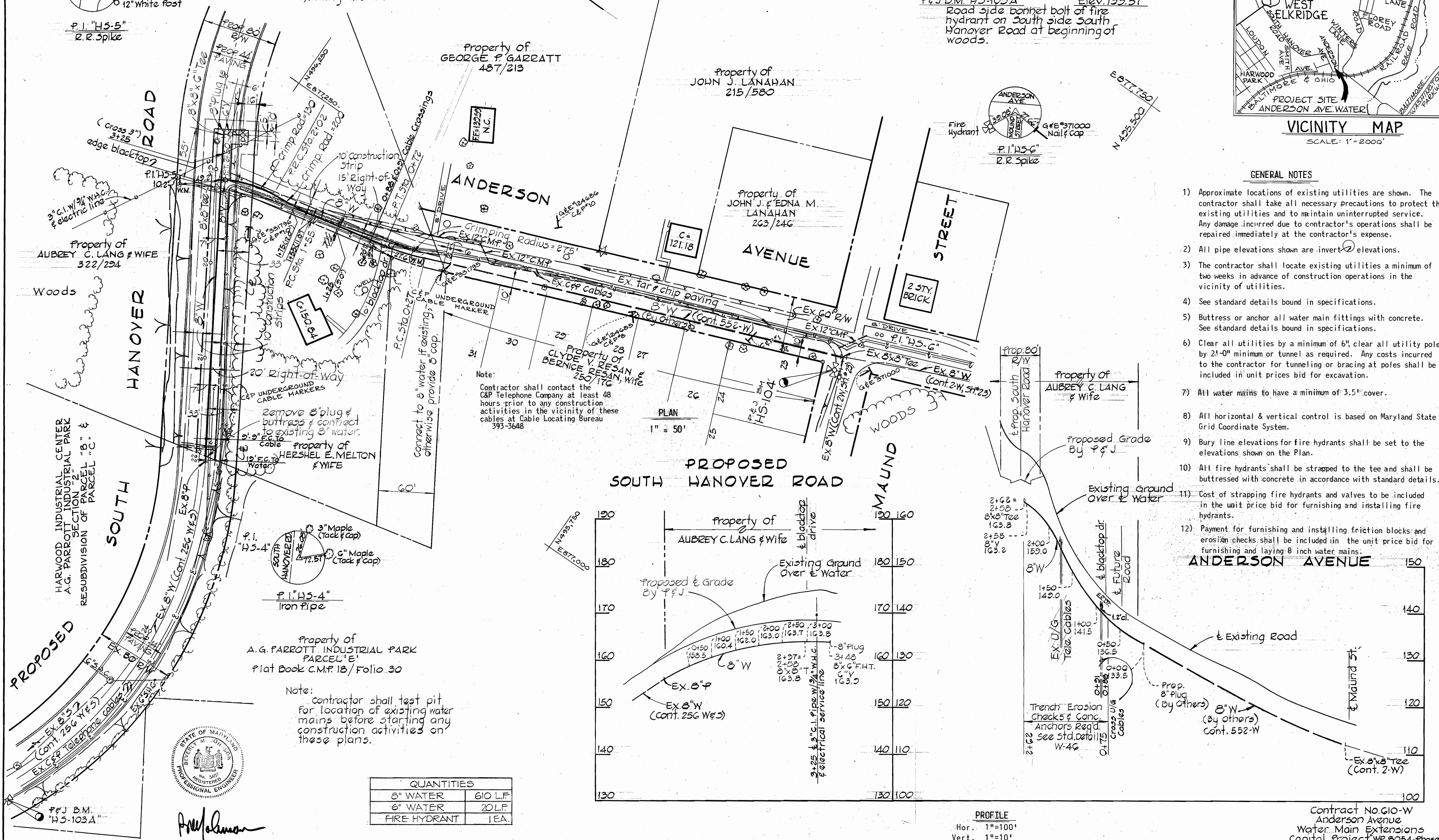
- P&J B.M. "HS-104" Elev. 121.15
Road side Bonnet Bolt of fire
hydrant on southwest corner
Anderson Ave. & Mound Street.
- P&J B.M. "HS-103A" Elev. 133.57
Road side bonnet bolt of fire
hydrant on South side South
Hanover Road at beginning of
woods.



VICINITY MAP
SCALE: 1" = 2000'

GENERAL NOTES

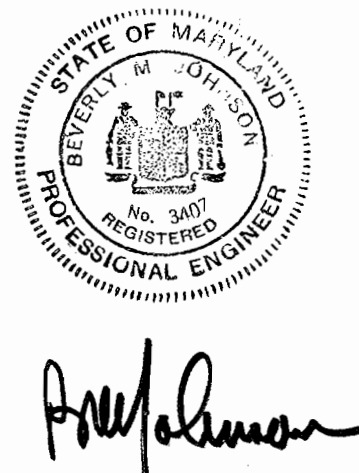
- 1) Approximate locations of existing utilities are shown. The contractor shall take all necessary precautions to protect the existing utilities and to maintain uninterrupted service. Any damage incurred due to contractor's operations shall be repaired immediately at the contractor's expense.
- 2) All pipe elevations shown are invert elevations.
- 3) The contractor shall locate existing utilities a minimum of two weeks in advance of construction operations in the vicinity of utilities.
- 4) See standard details bound in specifications.
- 5) Buttress or anchor all water main fittings with concrete. See standard details bound in specifications.
- 6) Clear all utilities by a minimum of 6", clear all utility poles by 21-0" minimum or tunnel as required. Any costs incurred to the contractor for tunneling or bracing at poles shall be included in unit prices bid for excavation.
- 7) All water mains to have a minimum of 3.5' cover.
- 8) All horizontal & vertical control is based on Maryland State Grid Coordinate System.
- 9) Bury line elevations for fire hydrants shall be set to the elevations shown on the Plan.
- 10) All fire hydrants shall be strapped to the tee and shall be buttressed with concrete in accordance with standard details.
- 11) Cost of strapping fire hydrants and valves to be included in the unit price bid for furnishing and installing fire hydrants.
- 12) Payment for furnishing and installing friction blocks and erosion checks shall be included in the unit price bid for furnishing and laying 8 inch water mains.



Note:
Contractor shall contact the
C&P Telephone Company at least 48
hours prior to any construction
activities in the vicinity of these
cables at Cable Locating Bureau
393-3648

Note:
Contractor shall test pit
for location of existing water
mains before starting any
construction activities on
these plans.

QUANTITIES	
8" WATER	610 L.F.
6" WATER	20 L.F.
FIRE HYDRANT	1EA.



PURDUM & JESCHKE
ENGINEERS
1023 N. CALVERT ST.
BALTIMORE, MARYLAND

DEPARTMENT OF PUBLIC WORKS
HOWARD COUNTY, MARYLAND
DATE: 3-21-74
W. O. Falbert
CHIEF BUREAU OF ENGINEERING

CONTRACT NO. G10-W

PLAN AND PROFILE OF
WATER MAINS

ANDERSON AVENUE
ELECTION DISTRICT ELKRIDGE NO. 1

DRAWING NO. 1 OF 1
SCALE: As Shown
DES: RDB
DRFT: RDB
CHK: TAF

Contract No. G10-W
Anderson Avenue
Water Main Extensions
Capital Project WP-8054-Phase 2

WS G10-W/1