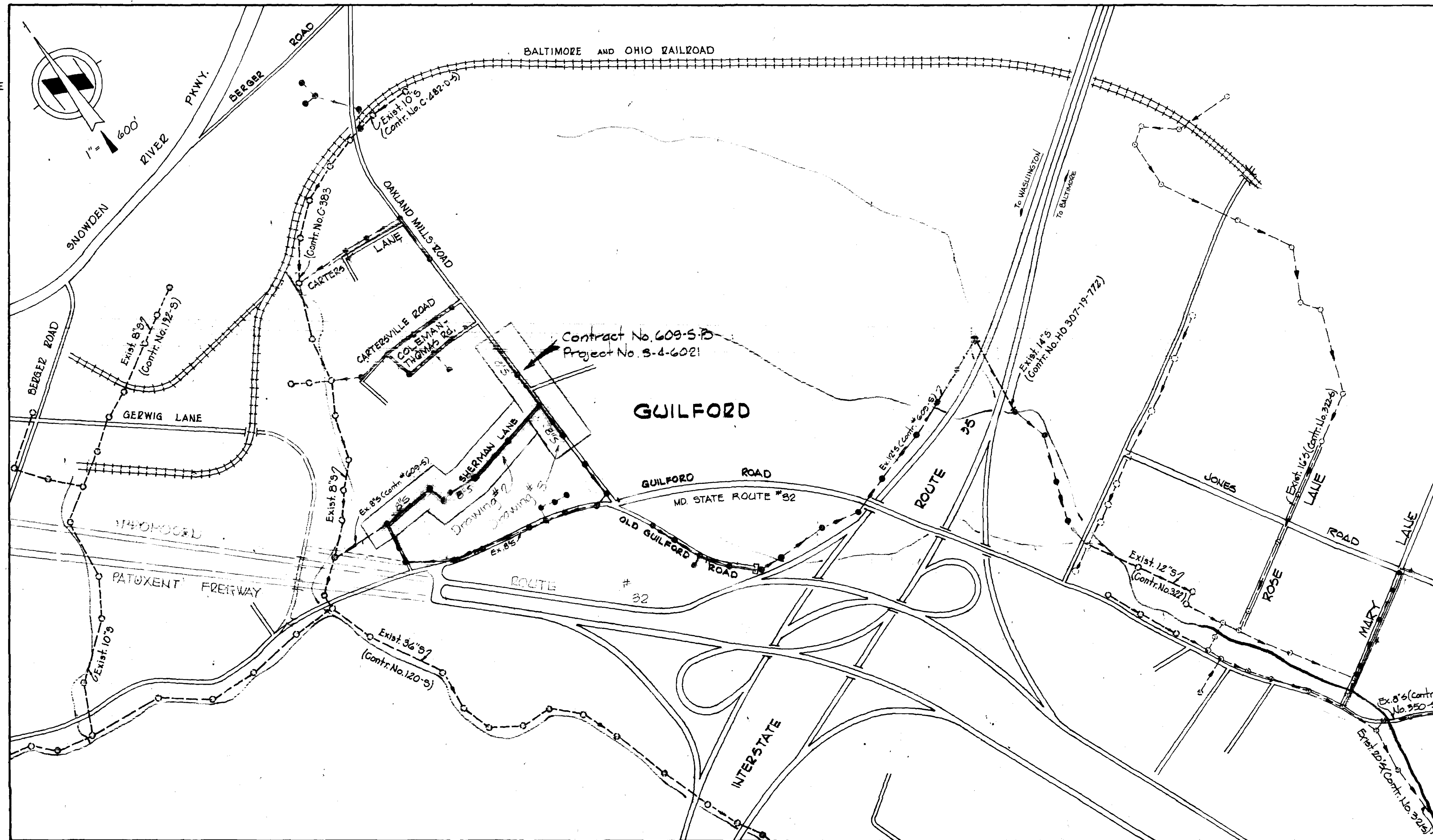


**GENERAL NOTES**

1. APPROXIMATE LOCATION OF EXISTING MAINS ARE SHOWN. THE CONTRACTOR SHALL TAKE ALL NECESSARY PRECAUTIONS TO PROTECT EXISTING MAINS AND SERVICES AND MAINTAIN UNINTERRUPTED SUPPLY. ANY DAMAGE INCURRED SHALL BE REPAIRED IMMEDIATELY.
2. ALL PIPE ELEVATIONS SHOWN ARE INVERT ELEVATIONS.
3. THE CONTRACTOR SHALL LOCATE EXISTING UTILITIES A MINIMUM OF TWO WEEKS IN ADVANCE OF CONSTRUCTION OPERATIONS IN VICINITY OF UTILITIES.
4. THE CONTRACTOR SHALL NOTIFY THE FOLLOWING UTILITIES OR AGENCIES AT LEAST FIVE DAYS BEFORE STARTING WORK SHOWN ON THESE PLANS:  
 BALTIMORE GAS AND ELECTRIC COMPANY-UNDERGROUND ELECTRIC DISTRIBUTION ENGINEERING  
 DAMAGE CONTROL - 234-5691  
 UNDERGROUND GAS DISTRIBUTION ENGINEERING 234-5621  
 CHESAPEAKE AND POTOMAC TELEPHONE COMPANY 393-3648.  
 MISS UTILITY - 1 - 559-0100
5. FOR ALL STANDARD DETAILS SEE STANDARDS BOUND IN SPECIFICATIONS.
6. ALL HORIZONTAL AND VERTICAL CONTROLS ARE BASED ON MARYLAND STATE DATUM.
7. CLEAR ALL UTILITIES BY A MINIMUM OF 6", CLEAR ALL POLES BY 2'-0" OR TUNNEL AS REQUIRED.
8. BLOCK ALL FITTINGS WITH CONCRETE, SEE STANDARDS BOUND IN SPECIFICATIONS.
9. ALL SEWER MAINS SHALL BE C.S.P.X., V.C.P.X. OR A.C.P. CLASS 2400 UNLESS OTHERWISE NOTED.
10. ALL MANHOLES SHALL BE 4'-0" INSIDE DIAMETER.
11. THE CONTRACTOR SHALL PROVIDE A JOINT IN ALL SEWER MAINS WITHIN 2'-0" OF EXTERIOR MANHOLE WALLS.
12. TREES ARE TO BE PROTECTED FROM DAMAGE TO MAXIMUM EXTENT. TREES LOCATED WITHIN THE CONSTRUCTION STRIP ARE NOT TO BE REMOVED OR DAMAGED BY THE CONTRACTOR.
13. MANHOLES SHOWN WITH 12" WALLS ARE BRICK MANHOLES ONLY.



**CONTRACT NO. 609-S-B  
GUILFORD**

**HOWARD COUNTY, MARYLAND**

**DEPARTMENT OF PUBLIC WORKS**

QUANTITIES		
ITEM	QUANTITY	SUPPLIER/MATERIAL
	BID	AS-BUILT
8" Sewer	9750 LF	2756.4
Manhole	40 WF	97.5

As-Built  
Stakeout & Diary FB. 6841



*Kenneth M. Lord*  
 Guilford  
 Project No. S-4-6021  
 Contract No. 609-S-B

WHITMAN, REQUARDT & ASSOCIATES  
 ENGINEERS  
 1304 ST. PAUL ST.  
 BALTIMORE, MARYLAND

DEPARTMENT OF PUBLIC WORKS  
 HOWARD COUNTY, MARYLAND

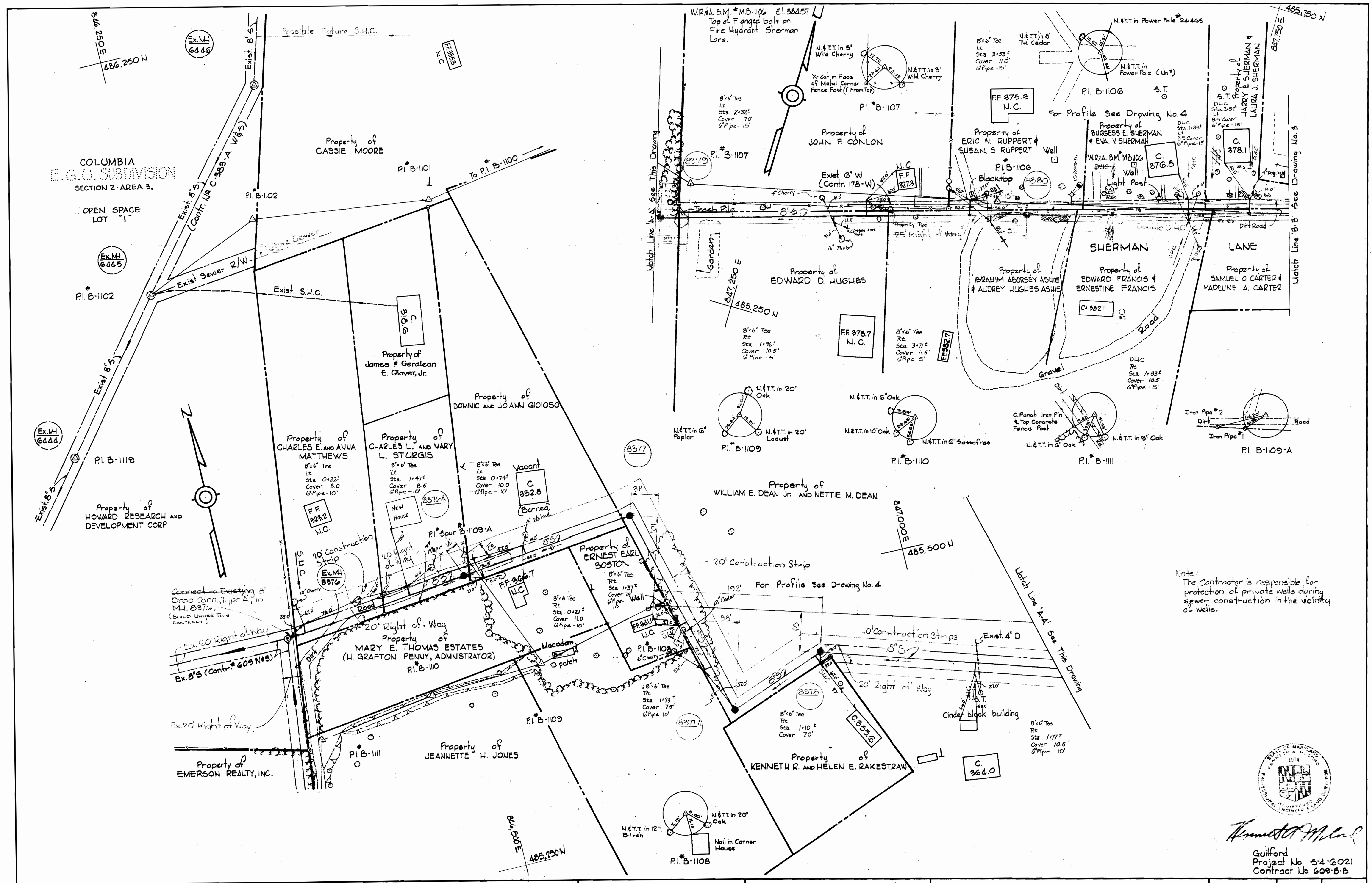
*PJ Pappas* 4-22-77 *WOF* 4-21-77  
 DIRECTOR OF PUBLIC WORKS - DATE CHIEF-BUREAU OF ENGINEERING - DATE

CONTRACT NO. 609-S-B  
 PROJECT NO. S-4-6021

LOCATION MAP

ELECTION DISTRICT  
 GUILFORD NO. 6

DRAWING NO. 1 OF 4  
 SCALE 1"=600'



Note:  
The Contractor is responsible for protection of private wells during sewer construction in the vicinity of wells.



*Kenneth M. ...*  
Guilford  
Project No. S-4-6021  
Contract No. 609-S-B

WHITMAN, REQUARDT & ASSOCIATES ENGINEERS 1304 ST. PAUL ST. BALTIMORE, MARYLAND	DEPARTMENT OF PUBLIC WORKS HOWARD COUNTY, MARYLAND 4-22-77 W. O. Albert 4-21-77 DIRECTOR OF PUBLIC WORKS - DATE CHIEF BUREAU OF ENGINEERING - DATE	CONTRACT NO. 609-S-B PROJECT NO. S-4-6021	PLAN OF SEWER MAINS	ELECTION DISTRICT GUILFORD NO. 6	DRAWING NO. 2 OF 4 SCALE 1" = 50' 280 485 275 485 285 485
---	---	--	------------------------	-------------------------------------	---

W.S. 609-S-B/2

W.R. & A. BM R-5 Elev. 384.04  
 R.R. Spike in Power Pole #21' left of Sta. 4+90  
 between P.I. R-6 & P.I. B-1082 at intersection of  
 Oakland Mills Rd. and Clary Rd.

8" x 6" Tee  
 Rt. Sta. 0+63  
 Cover 10.5'  
 6" Pipe - 22'

8" x 6" Tee  
 Sta. 1+93  
 Cover 10.5'  
 6" Pipe - 18'

X-Cut & Top  
 Fire Hydrant  
 Oakland Mills  
 Road

N.E.T.T. in Power Pole #5  
 N.E.T.T. in 14" Oak

Match Line C-C See This Drawing

485,750 N  
 847,750 E

W.R. & A. BM R-6 Elev. 393.80  
 R.R. Spike in power pole #374804 @  
 Intersection of Oakland Mills Road & Cartersville  
 Road; Reference for P.I. R-7.

N.E.T.T. in Power Pole #5  
 Oakland Mills Road  
 N.E.T.T. in Power Pole #99592  
 Tack in 15" Pine  
 P.I. Spur-B

484,000 E  
 847,000 N

OAKLAND

GUILFORD ELEMENTARY SCHOOL  
 Basement 388.8

Property of  
 U.S.A. FEDERAL COMMUNICATION COMMISSION

P.I. Spur-B  
 3402

Exist. 12" W  
 (Contr. 178-W)

P.I. R-7

N.E.T.T. in Power Pole #75971  
 Oakland Mills Road

N.E.T.T. in Power Pole #909997  
 Oakland Mills Road

P.I. B-1083  
 8597A

MILLS

Exist. C & P Cable

Exist. 12" W  
 (Contr. 178-W)

C-379.9

C-379.3

W.R. & A. S.M.R. 6  
 394.0  
 N.C.

P.I. B-1083  
 394.0  
 N.C.

FF-393.5  
 N.C.

Trailer  
 FF-392.6

FF-393.5  
 N.C.

C-380.1

C-380.5

8" x 6" Tee  
 Lt. Sta. 2+16  
 Cover 11.0'  
 6" Pipe - 5'

8" x 6" Tee  
 Lt. Sta. 3+00  
 Cover 11.0'  
 6" Pipe - 5'

NOT INCLUDED IN THIS CONTRACT

482,250 N  
 847,750 E

484,000 N  
 847,750 E

WHITMAN, REQUARDT & ASSOCIATES  
 ENGINEERS  
 1304 ST. PAUL ST.  
 BALTIMORE, MARYLAND

DEPARTMENT OF PUBLIC WORKS  
 HOWARD COUNTY, MARYLAND

*M. P. ...* 4-21-77  
 DIRECTOR OF PUBLIC WORKS - DATE

*W. O. ...* 4-21-77  
 CHIEF BUREAU OF ENGINEERING - DATE

CONTRACT NO. 609-S-B  
 PROJECT NO. S-4-6021

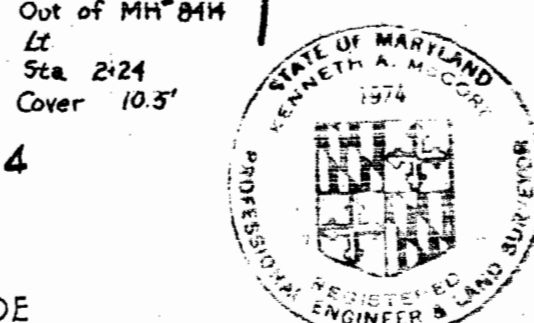
PLAN OF  
 SEWER MANS

ELECTION DISTRICT  
 GUILFORD NO. 6

DRAWING  
 NO. 3  
 OF 4

SCALE  
 1" = 50'

Guilford  
 Project No. S-4-6021  
 Contract No. 609-S-B



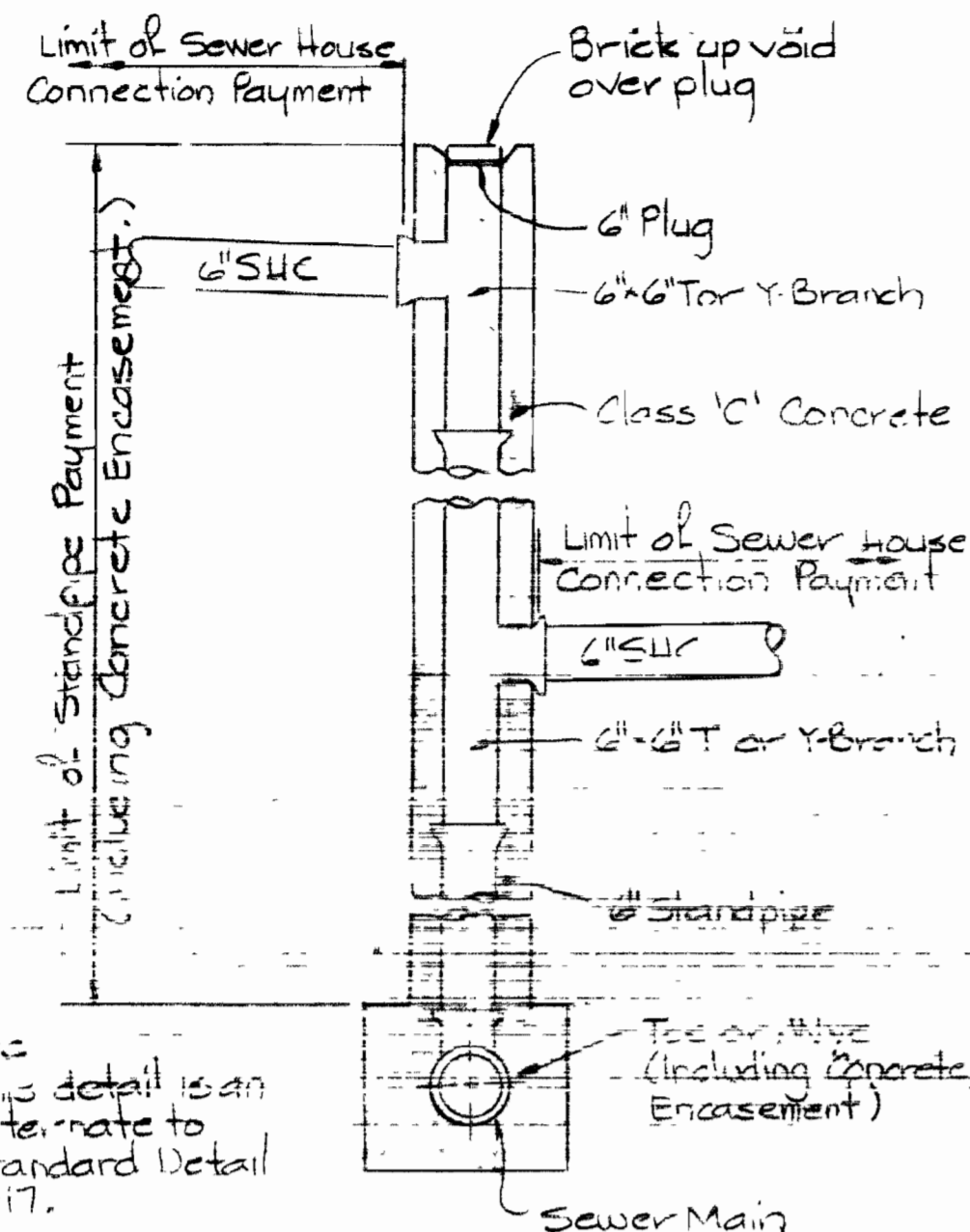
*Kenneth M. ...*

FD 3792 3826, 3823, 5543  
 July 5, 1973 3888, 3935  
 As Built February 21, 1980

W. O. 6800-2

W 609-S-B/3

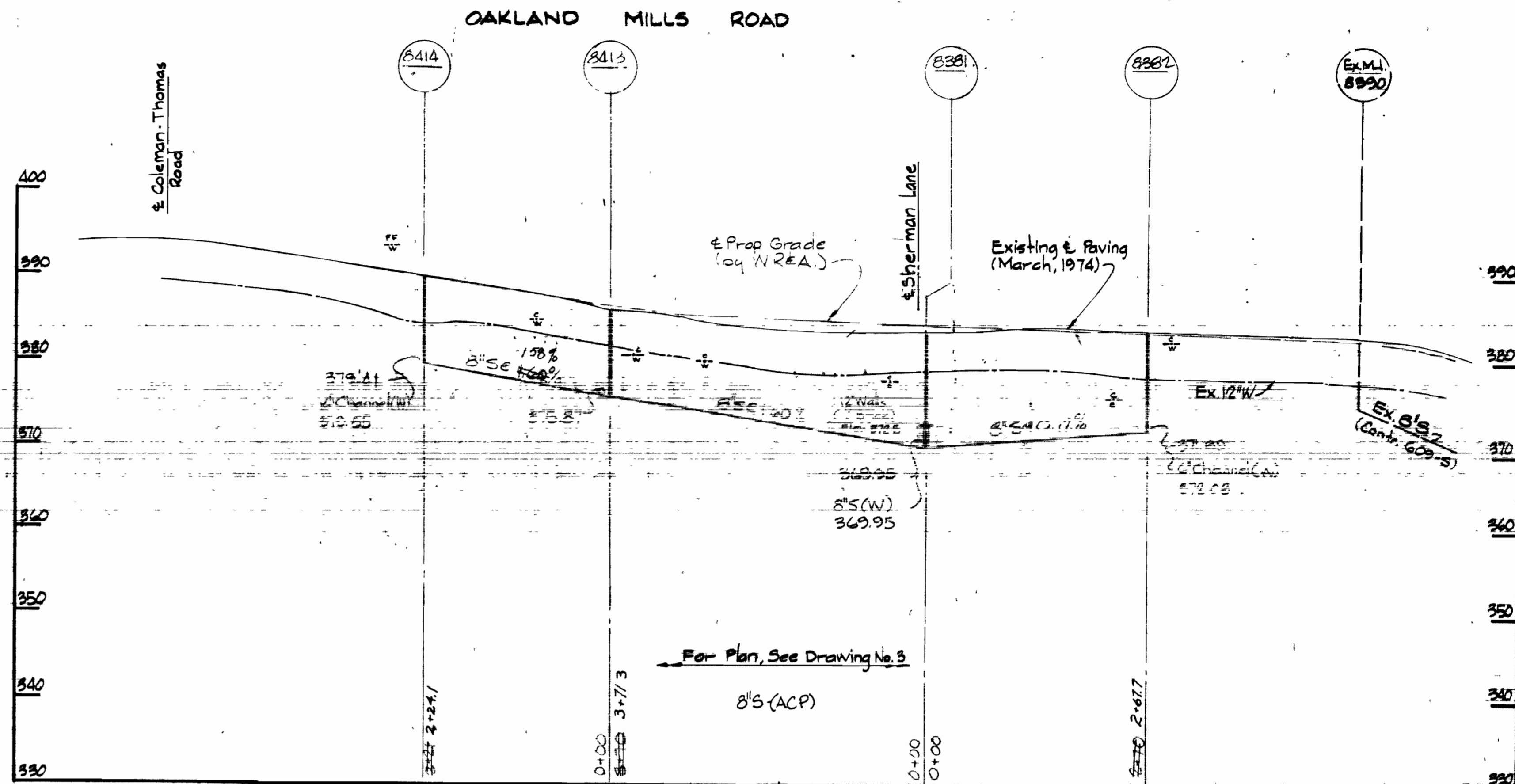
BR 115 4-1-18232



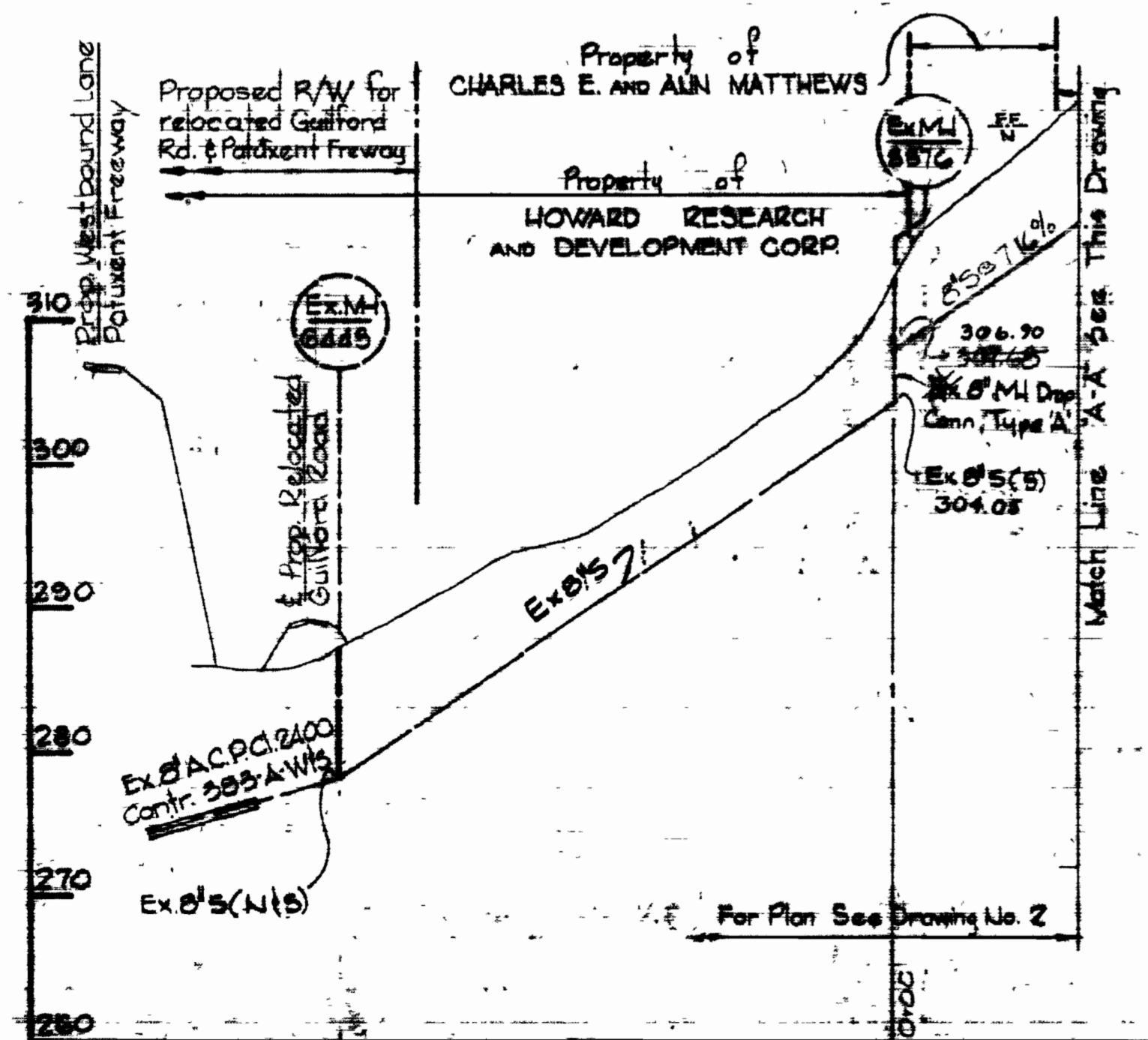
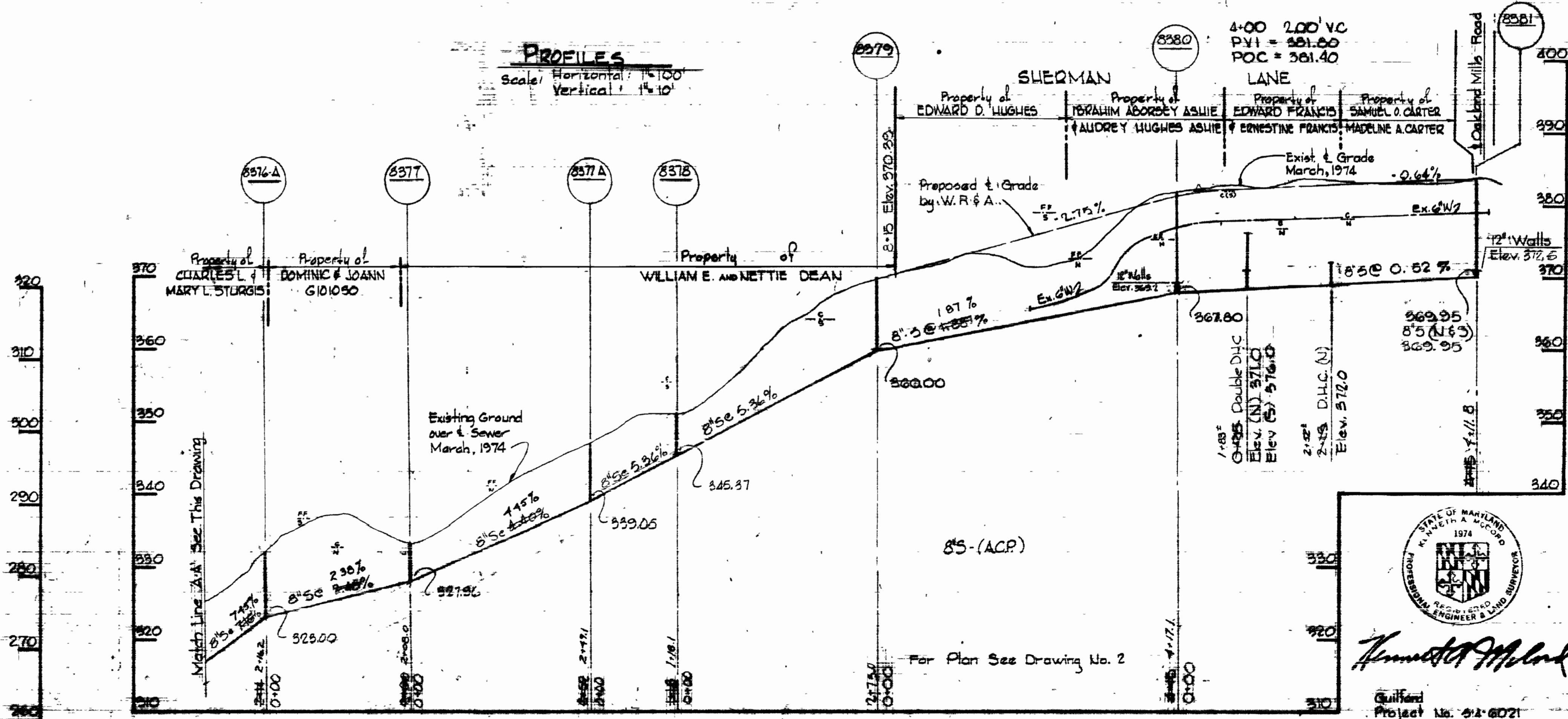
**DETAIL OF DOUBLE DROP HOUSE CONNECTION**

Scale 1/2"=1'-0"

Note: This detail is an alternate to Standard Detail S-17.



**PROFILES**  
Scale: Horizontal: 1"=100'  
Vertical: 1"=10'



<b>WHITMAN, REQUARDT &amp; ASSOCIATES</b> ENGINEERS 1304 ST. PAUL ST. BALTIMORE, MARYLAND	<b>DEPARTMENT OF PUBLIC WORKS</b> HOWARD COUNTY, MARYLAND <i>W. Q. Gbodez</i> 4-22-77 <small>DIRECTOR OF PUBLIC WORKS DATE</small>	<b>CONTRACT NO. 60998</b> <b>PROJECT NO. E-4-6021</b>	<b>PROFILE OF SEWER MAINS</b>	<b>ELECTION DISTRICT</b> GUILFORD NO. 6	<b>DRAWING NO. AS</b> OF 1 OF 1 <b>SCALE</b> AS SHOWN
--	---	--	-------------------------------	--	--

WS 609-S-B/4

PLANNING 44-10 10-10

W. Q. GBODEZ

July 5, 1977