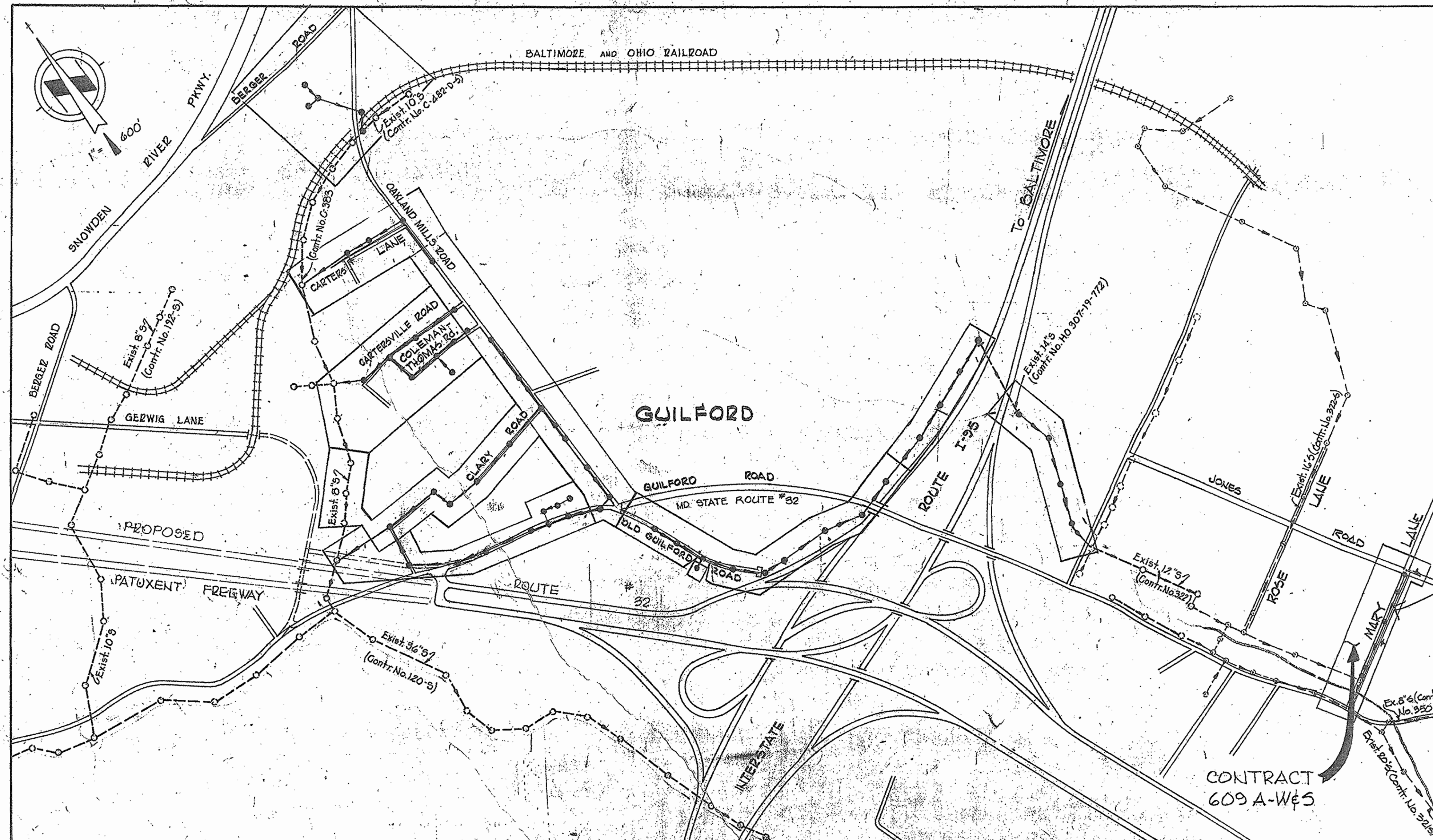


GENERAL NOTES

1. APPROXIMATE LOCATION OF EXISTING MAINS ARE SHOWN. THE CONTRACTOR SHALL TAKE ALL NECESSARY PRECAUTIONS TO PROTECT EXISTING MAINS AND SERVICES AND MAINTAIN UNINTERRUPTED SUPPLY. ANY DAMAGE INCURRED SHALL BE REPAIRED IMMEDIATELY.
2. ALL PIPE ELEVATIONS SHOWN ARE INVERT ELEVATIONS.
3. THE CONTRACTOR SHALL LOCATE EXISTING UTILITIES A MINIMUM OF TWO WEEKS IN ADVANCE OF CONSTRUCTION OPERATIONS IN VICINITY OF UTILITIES.
4. THE CONTRACTOR SHALL NOTIFY THE FOLLOWING UTILITIES OR AGENCIES AT LEAST FIVE DAYS BEFORE STARTING WORK SHOWN ON THESE PLANS:
BALTIMORE GAS AND ELECTRIC COMPANY - UNDERGROUND ELECTRIC DISTRIBUTION ENGINEERING
DAMAGE CONTROL - 234-5691
UNDERGROUND GAS DISTRIBUTION ENGINEERING 234-5621
CHESAPEAKE AND POTOMAC TELEPHONE COMPANY 393-3648.
MISS. UTILITY - 1 - 559-0100
5. FOR ALL STANDARD DETAILS SEE STANDARDS BOUND IN SPECIFICATIONS.
6. ALL HORIZONTAL AND VERTICAL CONTROLS ARE BASED ON MARYLAND STATE DATUM.
7. CLEAR ALL UTILITIES BY A MINIMUM OF 6".
8. BLOCK ALL FITTINGS WITH CONCRETE, SEE STANDARDS BOUND IN SPECIFICATIONS.
9. ALL WATER MAINS SHALL HAVE A MINIMUM OF 3 1/2' COVER.
10. ALL WATER MAINS SHALL BE C.I.P., D.I.P. OR A.C.P. UNLESS OTHERWISE NOTED.
11. ALL VALVES SHALL BE STRAPPED TO TEES WHERE APPLICABLE IN ACCORDANCE WITH THE STANDARD DETAILS.
12. ALL FIRE HYDRANTS SHALL BE STRAPPED AND BUTTRESSED IN ACCORDANCE WITH THE STANDARD DETAILS. SOIL AROUND THE HYDRANTS SHALL BE COMPACTED IN ACCORDANCE WITH SECTION 5-15 OF THE STANDARD SPECIFICATIONS.
13. PAYMENT FOR STRAPPING FIRE HYDRANTS AND VALVES WILL BE INCLUDED IN UNIT PRICE BID FOR FURNISHING AND LAYING WATER MAINS.
14. BURY LINE ELEVATIONS ON FIRE HYDRANTS SHALL BE SET TO THE ELEVATION SHOWN ON THE DRAWINGS.
15. ALL W.H.C.'S SHALL BE 3/4" DIAMETER UNLESS OTHERWISE NOTED.
16. WATER SERVICES SHALL BE FOR INSIDE METER SETTINGS.
17. ALL SEWER MAINS SHALL BE C.S.P.X., V.C.P.X. OR A.C.P. CLASS 2400 UNLESS OTHERWISE NOTED.
18. ALL MANHOLES SHALL BE 4'-0" INSIDE DIAMETER.
19. THE CONTRACTOR SHALL PROVIDE A JOINT IN ALL SEWER MAINS WITHIN 2'-0" OF EXTERIOR MANHOLE WALLS.
20. MANHOLES SHOWN WITH 12" WALLS ARE FOR BRICK MANHOLES ONLY.
21. TREES ARE TO BE PROTECTED FROM DAMAGE TO MAXIMUM EXTENT. TREES LOCATED WITHIN THE CONSTRUCTION STRIP ARE NOT TO BE REMOVED OR DAMAGED BY THE CONTRACTOR.



Drawn
42 and
Tx 47
2-B03

436 0000

CONTRACT NO. 609 A-W & S
MARY LANE
WATER AND SEWER EXTENSIONS
HOWARD COUNTY, MARYLAND
DEPARTMENT OF PUBLIC WORKS

| QUANTITIES | | |
|-------------------|----------|----------|
| ITEM | DESIGN | AS BUILT |
| 8" Sewer (AEP) | 320 LF | 324 LF |
| 8" Water (D.I.P.) | 1,300 LF | 1,302 LF |
| Fire Hydrants | 2 | 2 |

AS-BUILT
Diary & Stakeout
FB # 10313



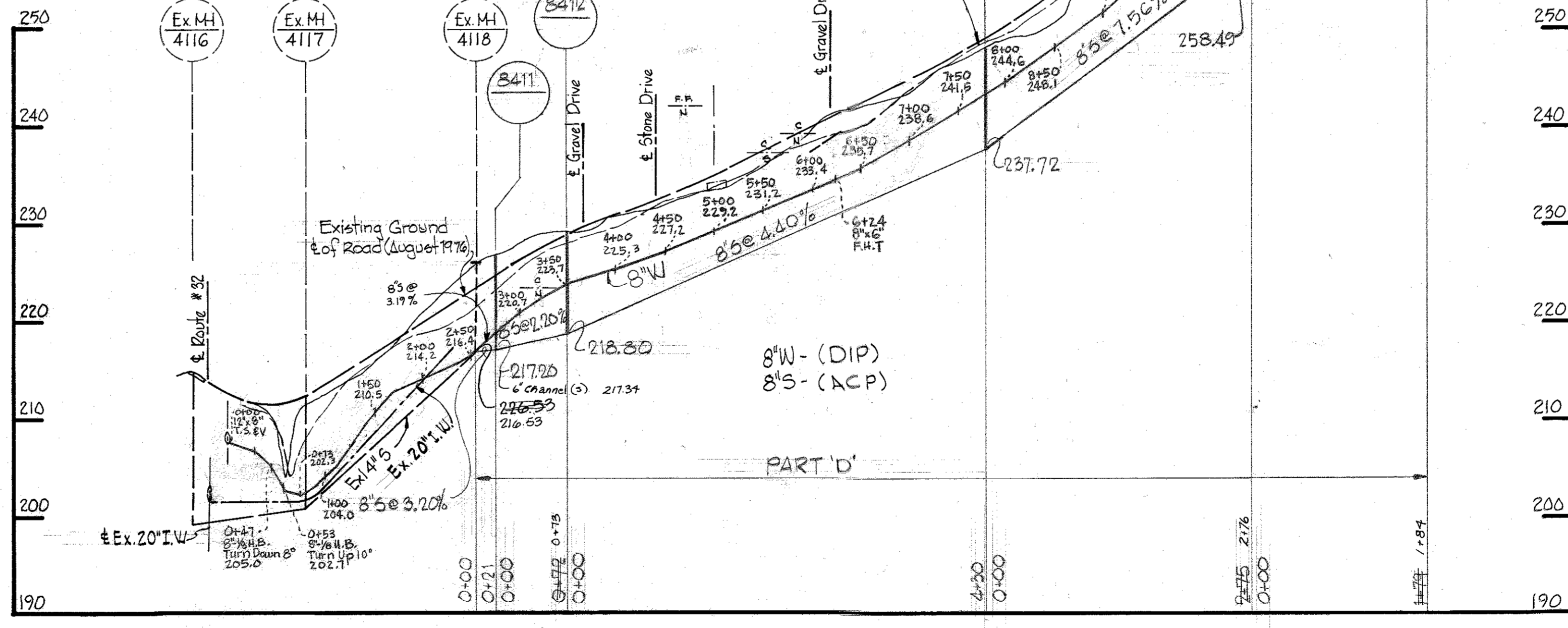
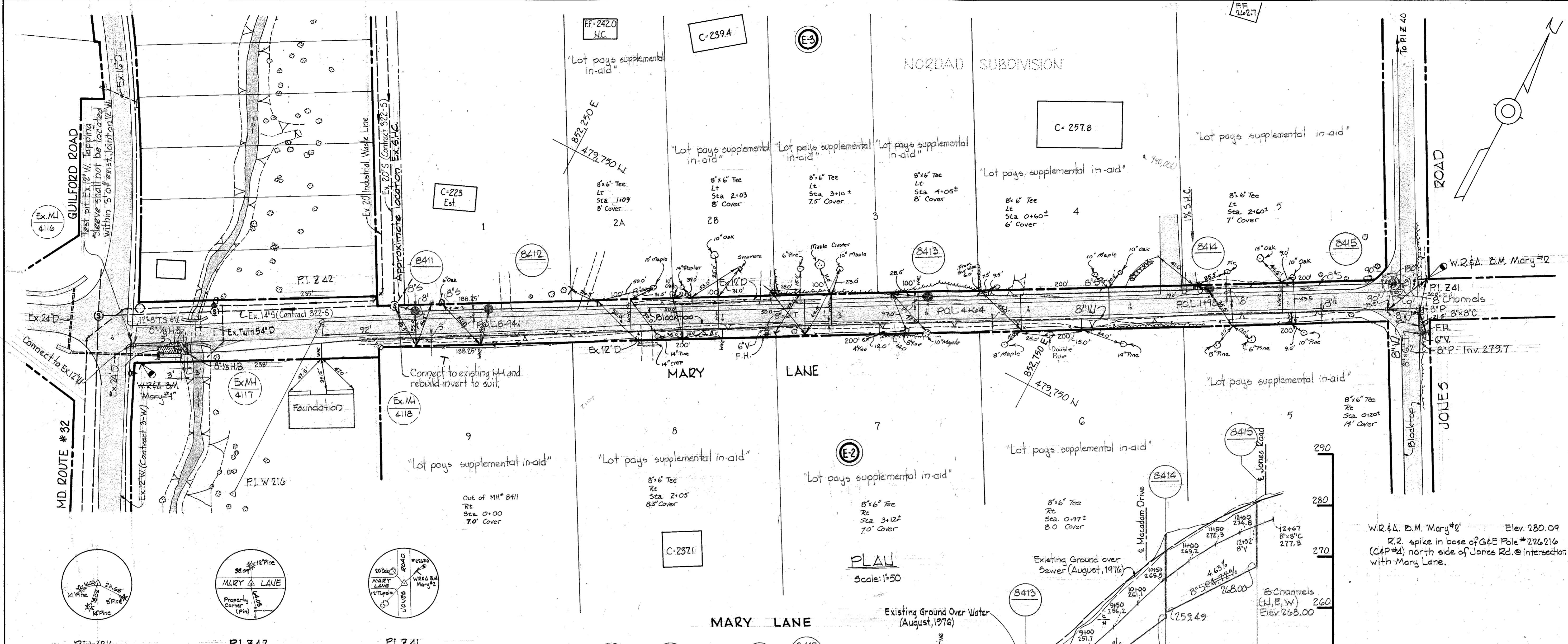
Handwritten Signature
Mary Lane
Project Nos. W-7-8095 & S-6-6079
Contract No. 609A-W&S

| | | | | | | |
|---|---|--|--------------|-------------------------------------|--------------------|---------------|
| WHITMAN, REQUARDT & ASSOCIATES ENGINEERS 1304 ST. PAUL ST. BALTIMORE, MARYLAND | DEPARTMENT OF PUBLIC WORKS HOWARD COUNTY, MARYLAND <i>W. O. G. 6800-2</i> | CONTRACT NO. 609 A-W&S PROJECT NO. S-6-6079 W-7-8095 | LOCATION MAP | ELECTION DISTRICT GUILFORD NO. 6 | DRAWING NO. 1 OF 2 | SCALE 1"=600' |
|---|---|--|--------------|-------------------------------------|--------------------|---------------|

W. O. 6800-2

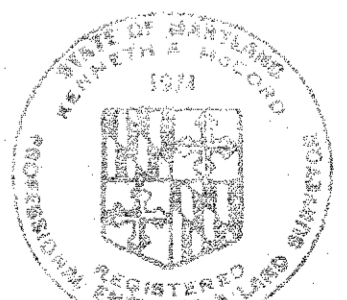
DECEMBER 26, 1976

AS-BUILT FEBRUARY 21, 1980



W.R.&A. B.M. "Mary" Elev. 208.79
 R.R. Spike in base of G&E Pole #212759 NE
 Corner @ Intersection of Rt. 32 & Mary Lane.

W.R.&A. B.M. "Mary" #2 Elev. 280.09
 R.R. Spike in base of G&E Pole #226216
 (C&P #2) north side of Jones Rd. @ intersection
 with Mary Lane.



James P. McLeod

Mary Lane Water and Sewer
 Project Nos. W-7-8095 and S-6-6079
 Contract No. 609A-W&S

| | | | | | | |
|---|---|---|-------------------------------|-------------------------------------|---------------|----------------|
| WHITMAN, REQUARDT & ASSOCIATES ENGINEERS 1304 ST. PAUL ST. BALTIMORE, MARYLAND | DEPARTMENT OF PUBLIC WORKS HOWARD COUNTY, MARYLAND <i>M. Reardon</i> 4-22-77 DIRECTOR OF PUBLIC WORKS - DATE | CONTRACT NO. 609A-W&S PROJECT NO. S-6-6079 W-7-8095 | PLAN & PROFILE SEWER MAINS | ELECTION DISTRICT GUILFORD NO. 6 | DRAWING NO. 2 | SCALE AS SHOWN |
| | | | | | OF 2 | OF 2 |

W. O. 2465

DECEMBER 28, 1978 F.B. 4453

As-BUILT FEBRUARY 21, 1980

WS 609A-W&S/2

BRUNING 44510 1839Z