

VICINITY MAP

GENERAL NOTES

1. Approximate location of existing mains are shown. The Contractor shall take all necessary precautions to protect existing mains and services and maintain uninterrupted supply. Any damage incurred shall be repaired immediately.
2. For all standard details see standard bound in Specification.
3. Locations of existing meters are approximate. Contractor shall provide temporary connections to each service. Payment will be included in unit prices bid for Temporary Service Pipe.
4. All service connections shall be minimum 1/2" dia. unless otherwise shown.
5. The Contractor shall notify the Baltimore Gas and Electric Company of Maryland prior to any construction activities in the vicinity of Gas and/or Electric facilities, by calling 234-5621, in Baltimore, Maryland.
6. The Contractor shall provide install and maintain a protect sign, 4'x6' as follows:

WATER MAIN IMPROVEMENTS	8 1/2"
GUN ROAD	5"
FOR INFORMATION CALL	1 1/2"
BALTIMORE COUNTY - 234-3551	2"
CONTRACTOR -	2"

7. Temporary connections to Fire Hydrants shall be 3" min. dia. and shall connect to the 2 1/2" inch hose nozzles. The Contractor shall provide a valve on the connection, strapped to the temporary G.W. Payment will be included in unit price bid for 6-inch Temporary Service Pipe.

5' of pipe removed at each opening in 16" main and replaced using (2) Smith Blair coupling.

DIARY FB# 5850 (#1)
DIARY FB# 5797 (#2)

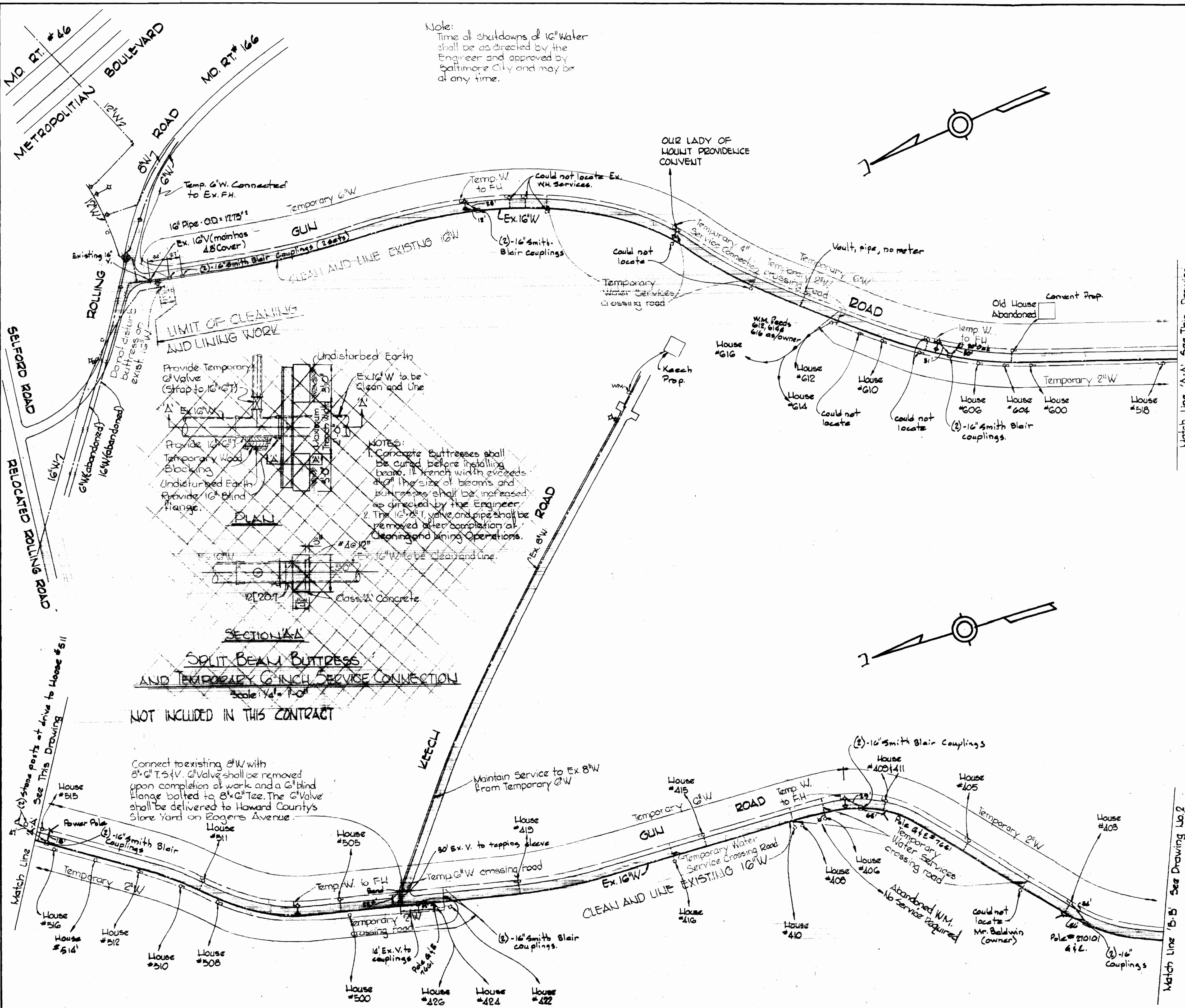
As Built



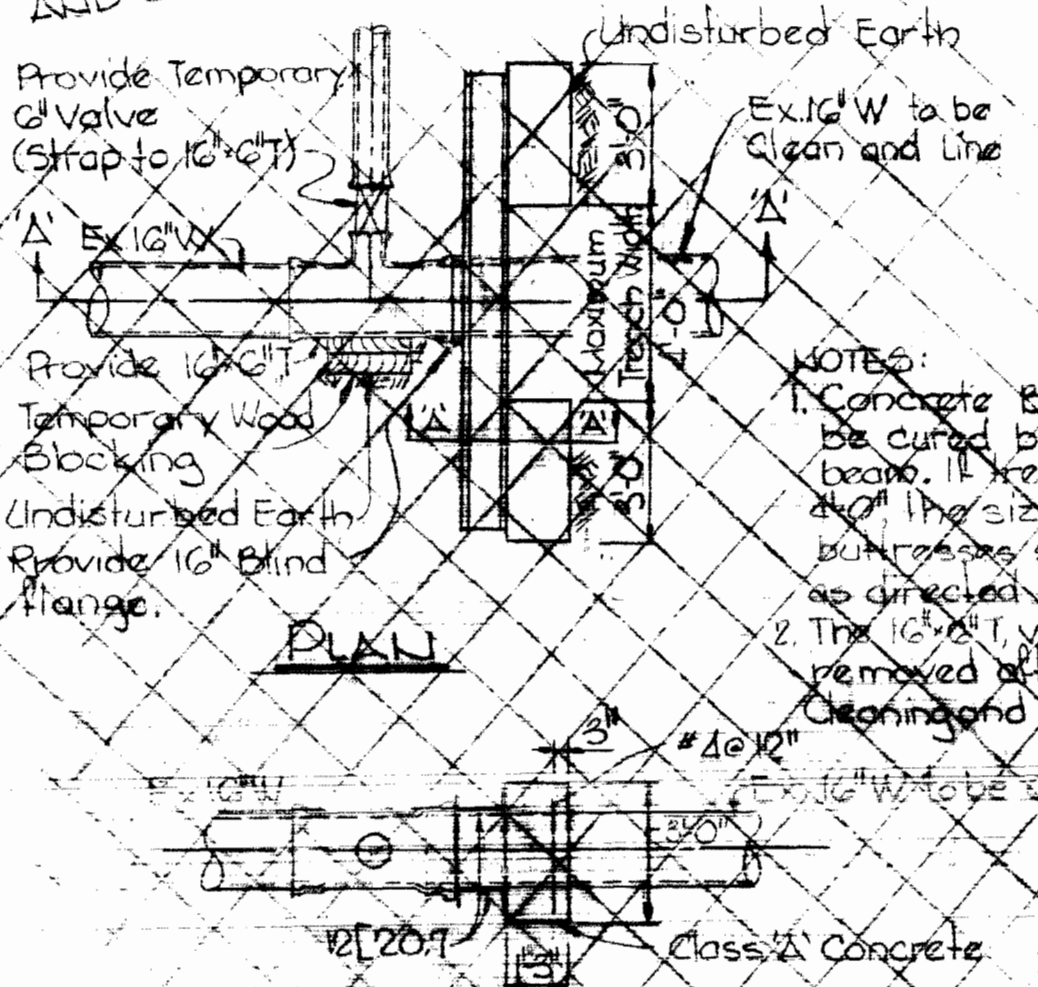
Annexed to Map

PLAN
Scale: 1" = 100'

Note:
Time of shutdowns of 16" Water shall be as directed by the Engineer and approved by Baltimore City and may be at any time.



LIMIT OF CLEANING AND LINING WORK



SECTION A-A
SPLIT-BEAM BUTTRESS AND TEMPORARY 6\"/>

NOT INCLUDED IN THIS CONTRACT

Connect to existing 8" W with 8" x 6" Tee. G Valve shall be removed upon completion of work and a G blind flange bolted to 8" x 6" Tee. The G Valve shall be delivered to Howard County's Store Yard on Rogers Avenue.

WS 608-W/1

WHITMAN, REQUARDT & ASSOCIATES ENGINEERS 1304 ST. PAUL ST. BALTIMORE, MARYLAND	DEPARTMENT OF PUBLIC WORKS HOWARD COUNTY, MARYLAND 2-28-74 DATE	CONTRACT NO. 608-W	PLAN AND DETAIL OF WATER MAINS	CLEAN AND LINE EXISTING MAINS GUN ROAD	DRAWING NO. 1 OF 2	SCALE AS SHOWN
--	---	---------------------------	---------------------------------------	---	---------------------------	-----------------------

W. O. 6540-2

AS BUILT April 12, 1977

