

QUANTITIES	
ITEM	QUANTITY
8" Sewer	3895 LF
8" Water	2775 LF
6" Water	2420 LF
Fire Hydrants	9

**CONTRACT C-2600-DW&S**  
**VILLAGE OF OWEN BROWN**  
**HOWARD COUNTY, MARYLAND**  
**DEPARTMENT OF PUBLIC WORKS**



*Kenneth A. Mccord*

Village of Owen Brown  
 Part 4 of 5  
 Section 4, Area 1  
 Contract No. C-2600-DW&S

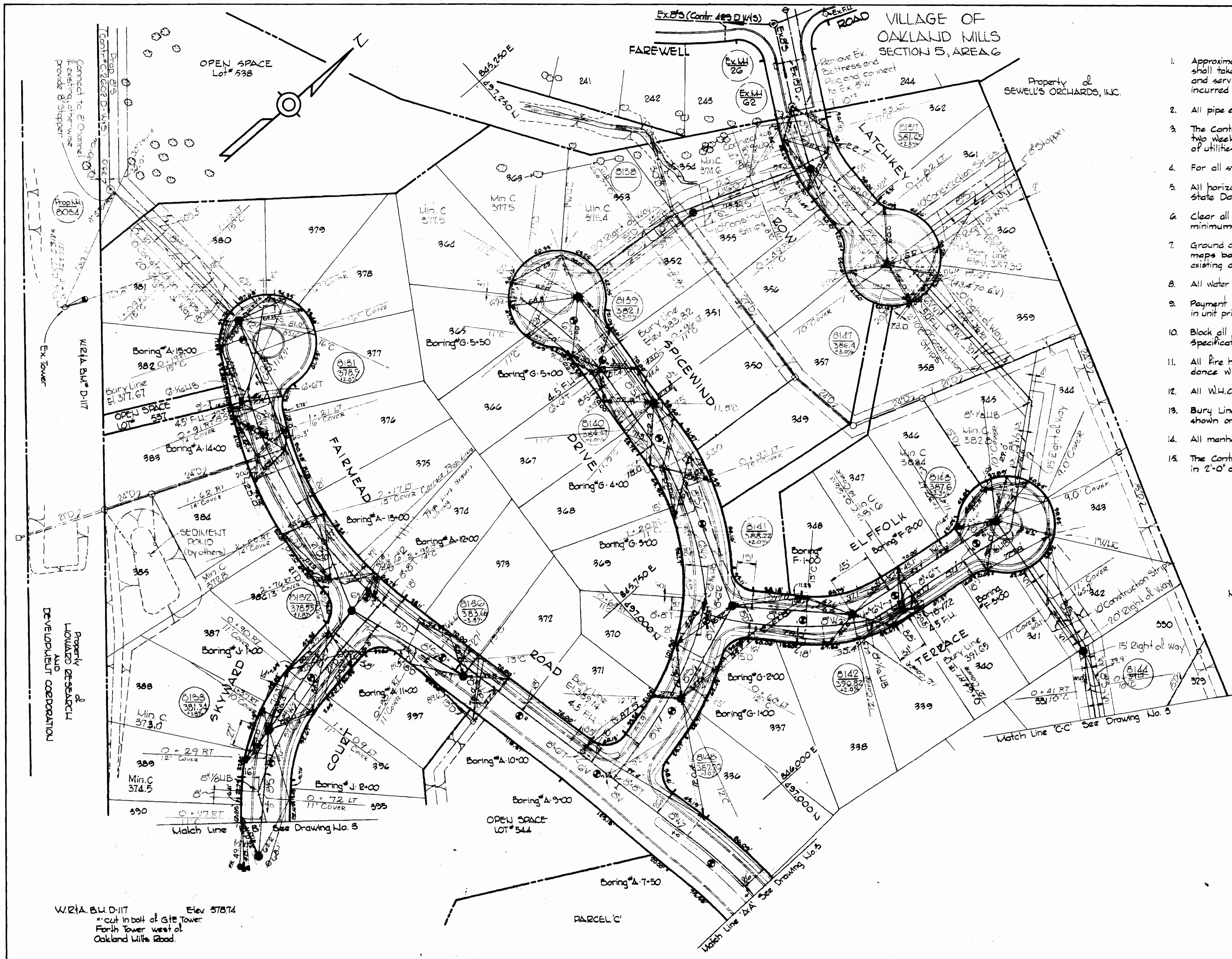
<b>WHITMAN, REQUARDT &amp; ASSOCIATES</b> ENGINEERS 1304 ST. PAUL ST. BALTIMORE, MARYLAND	<b>DEPARTMENT OF PUBLIC WORKS</b> HOWARD COUNTY, MARYLAND 6-4-74 <small>DATE</small> <i>W. O. Gilbert</i> <small>CHIEF, BUREAU OF ENGINEERING</small>	<b>CONTRACT NO. C-2600-DW&amp;S</b>	<b>LOCATION MAP OF</b> <b>WATER &amp; SEWER MAIN EXTENSIONS</b>	<b>COLUMBIA</b> <b>VILLAGE OF OWEN BROWN</b> <b>ELECTION DISTRICT GUILFORD No. 6</b>	<b>DRAWING</b> NO. 1 OF 5 <b>SCALE</b> 1"=800'
--	--	-------------------------------------	--	--	--



REVISIONS

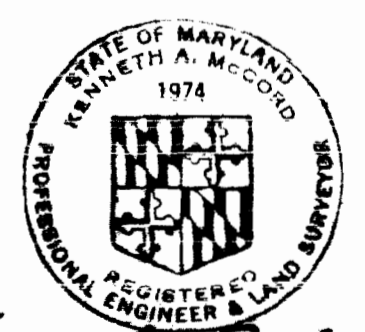
REVISIONS

WS 600 - W&S/2



- GENERAL NOTES**
1. Approximate location of existing mains are shown. The Contractor shall take all necessary precautions to protect existing mains and services and maintain uninterrupted supply. Any damage incurred shall be repaired immediately.
  2. All pipe elevations shown are invert elevations.
  3. The Contractor shall locate existing utilities a minimum of two weeks in advance of construction operations in vicinity of utilities.
  4. For all standard details see standards bound in Specifications.
  5. All horizontal and vertical controls are based on Maryland State Datum.
  6. Clear all utilities by a minimum of 6', clear all poles by a minimum of 2'-0" or tunnel as required.
  7. Ground over & water and/or sewer was taken from contour maps based on aerial photography except where labeled existing and dated.
  8. All water mains to have a minimum of 3 1/2' cover.
  9. Payment for strapping fire hydrants and valves will be included in unit price bid for furnishing and laying water mains.
  10. Block all fittings with concrete see standards bound in Specifications.
  11. All fire hydrants shall be strapped and buttressed in accordance with standard details.
  12. All W.M.C.'s to be 3/4" diameter unless otherwise noted.
  13. Bury Line elevations on fire hydrants shall be set to elevations shown on drawings.
  14. All manholes to be 4'-0" inside diameter.
  15. The Contractor shall provide a joint in all sewer mains within 2'-0" of exterior manhole walls.

Note:  
Auger Borings were made by the American Testing and Engineering Company for Howard Research and Development Corp. in February, 1974. Bottom of boring is shown 1'. Refusal (if encountered) is shown in red. Complete logs are available at the Howard County Department of Public Works.



*Kenneth A. McCord*

Village of Owen Brown  
Part 4 of 5  
Section 5, Area 6  
Contract No. C-2600 D.W.S.

<p>WHITMAN, REQUARDT &amp; ASSOCIATES ENGINEERS 1304 ST. PAUL ST. BALTIMORE, MARYLAND</p>	<p>DEPARTMENT OF PUBLIC WORKS HOWARD COUNTY, MARYLAND 6-4-74 <i>W.O. Fullert</i> CHIEF BUREAU OF ENGINEERING</p>	<p>CONTRACT NO. C-2600-D.W.S.</p>	<p>PLAN OF WATER AND SEWER MAINS</p>	<p>COLUMBIA VILLAGE OF OWEN BROWN ELECTION DISTRICT GUILFORD No. 6</p>	<p>DRAWING NO. 2 OF 5 SCALE 1" = 50'</p>
---	--	-----------------------------------	--	--	--

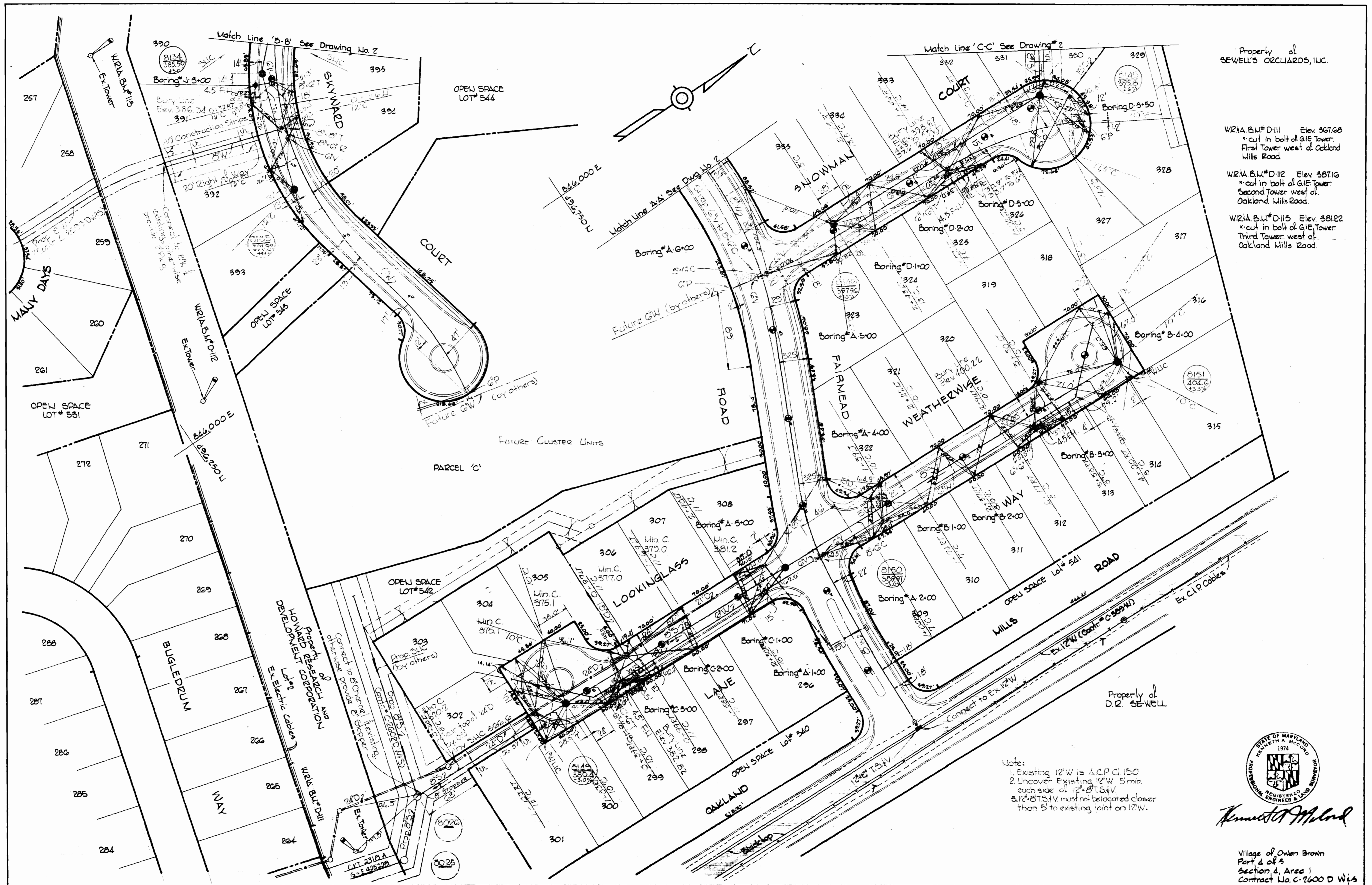
W. O. 6857-2

As Built Nov. 21, 1974 MAY 20, 1974



WS-600-WAS/3

16-44516-13162



Property of SEWELL'S ORCHARDS, INC.

WRIA.B.U.#D-111 Elev. 387.68  
\*cut in bolt of G1E Tower  
First Tower west of Oakland Mills Road.

WRIA.B.U.#D-112 Elev. 387.16  
\*cut in bolt of G1E Tower  
Second Tower west of Oakland Mills Road.

WRIA.B.U.#D-115 Elev. 381.22  
\*cut in bolt of G1E Tower  
Third Tower west of Oakland Mills Road.

Property of D.R. SEWELL

- Notes:
- Existing 12" W is ACP C.I. 150
  - Uncover Existing 12" W 5 min. each side of 12" S & V.
  - 12" S & V must not be located closer than 5' to existing joint on 12" W.



*Kenneth A. McLeod*

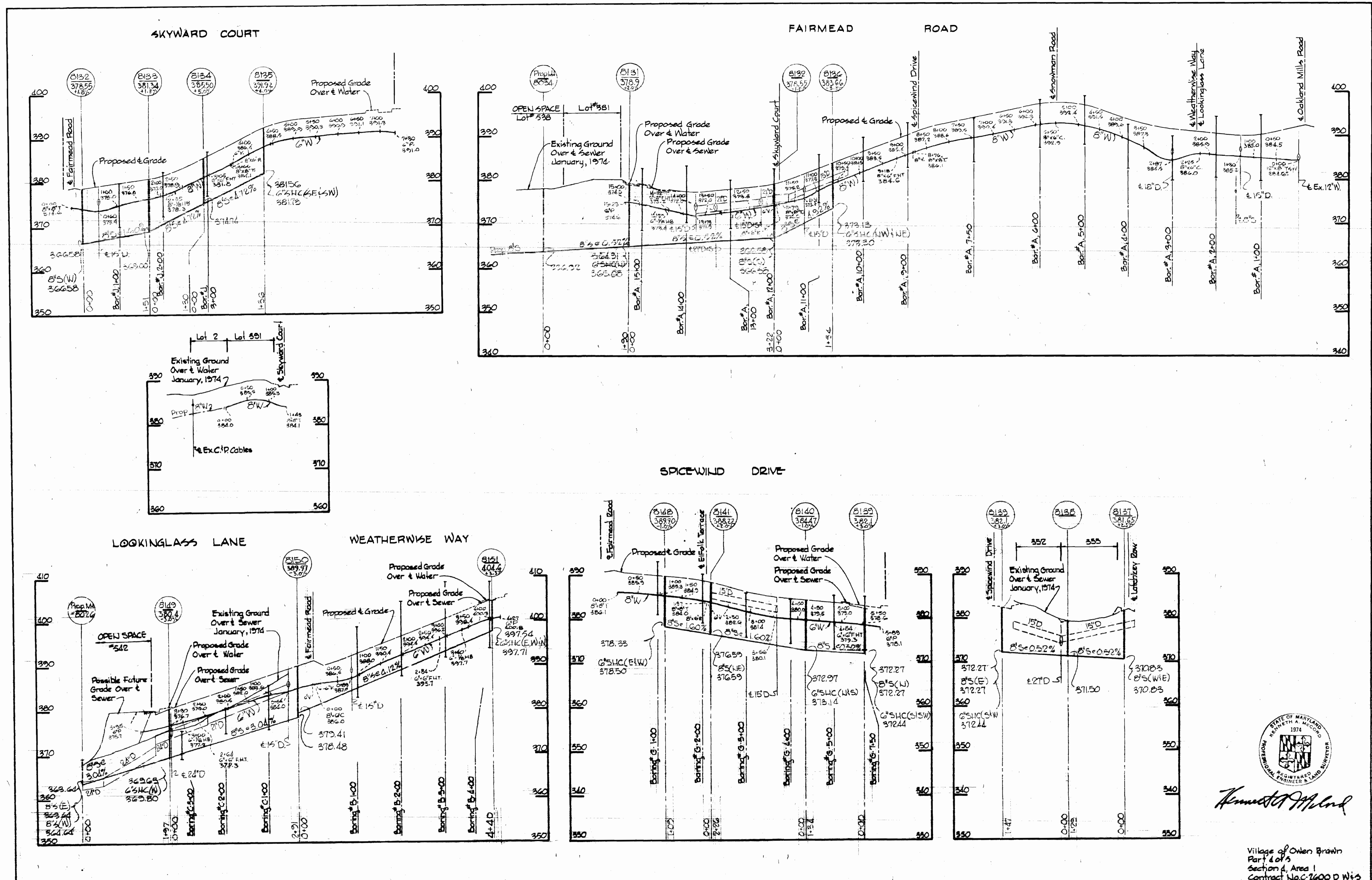
Village of Owen Brown  
Part 4 of 5  
Section 4, Area 1  
Contract No. C-2600 D W45

WHITMAN, REQUARDT & ASSOCIATES ENGINEERS 1304 ST. PAUL ST. BALTIMORE, MARYLAND	DEPARTMENT OF PUBLIC WORKS HOWARD COUNTY, MARYLAND 6-4-74 <i>W.O. Falbot</i> CHIEF-BUREAU OF ENGINEERING	CONTRACT NO. 2600-DW45	PLAN OF WATER AND SEWER MAINS	COLUMBIA VILLAGE OF OWEN BROWN ELECTION DISTRICT GUILFORD No. 6	DRAWING NO. 3 OF 5 SCALE 1"=50' <small>15-P. 15-S. 15-P. 15-S.</small>
---	--	------------------------	----------------------------------	---	--

W. O. 6857-2

As BUILT Nov. 21, 1974 MAY 20, 1974





*Kenneth M. Lind*

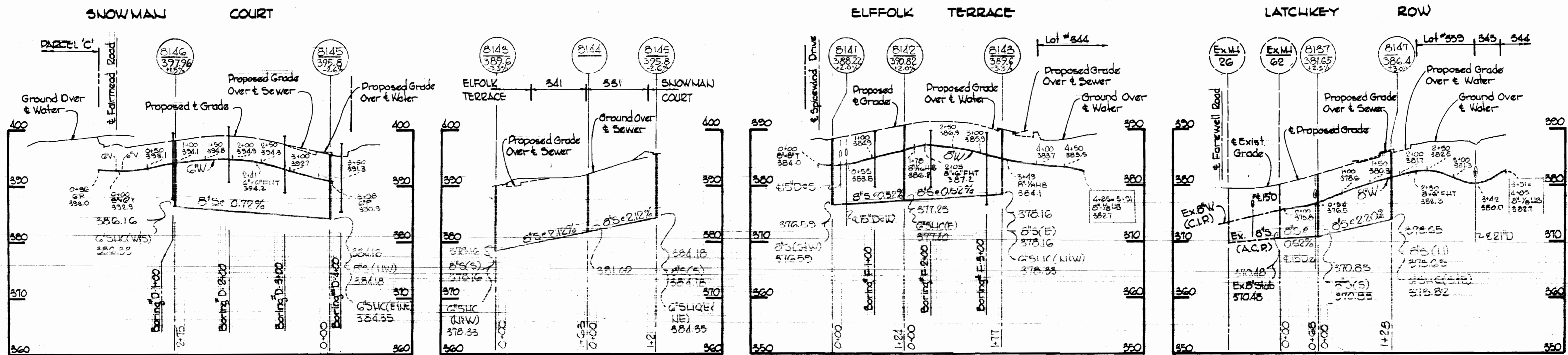
Village of Owen Brown  
Part 4 of 5  
Section 4, Area 1  
Contract No. C-2600 DWBS

<p><b>WHITMAN, REQUARDT &amp; ASSOCIATES</b> ENGINEERS 1304 ST. PAUL ST. BALTIMORE, MARYLAND</p>	<p><b>DEPARTMENT OF PUBLIC WORKS</b> HOWARD COUNTY, MARYLAND 6-4-74 DATE</p> <p><i>W. O. Lambert</i> CHIEF-BUREAU OF ENGINEERING</p>	<p><b>CONTRACT NO. C-2600 DWBS</b></p>	<p><b>PROFILES OF</b> <b>WATER AND SEWER MAINS</b></p>	<p><b>COLUMBIA</b> <b>VILLAGE OF OWEN BROWN</b> <b>ELECTION DISTRICT GUILFORD No. 6</b></p>	<p><b>DRAWING</b> <b>NO. 4</b> <b>OF 5</b></p> <p><b>SCALE</b> <b>H: V = 1" = 10'</b> <b>V: H = 1" = 10'</b></p>
--	--	--	--	---	--

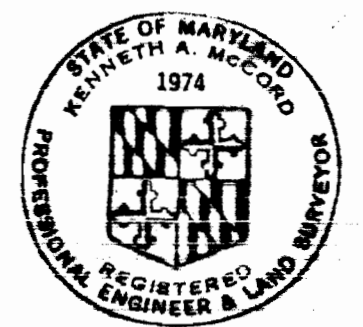
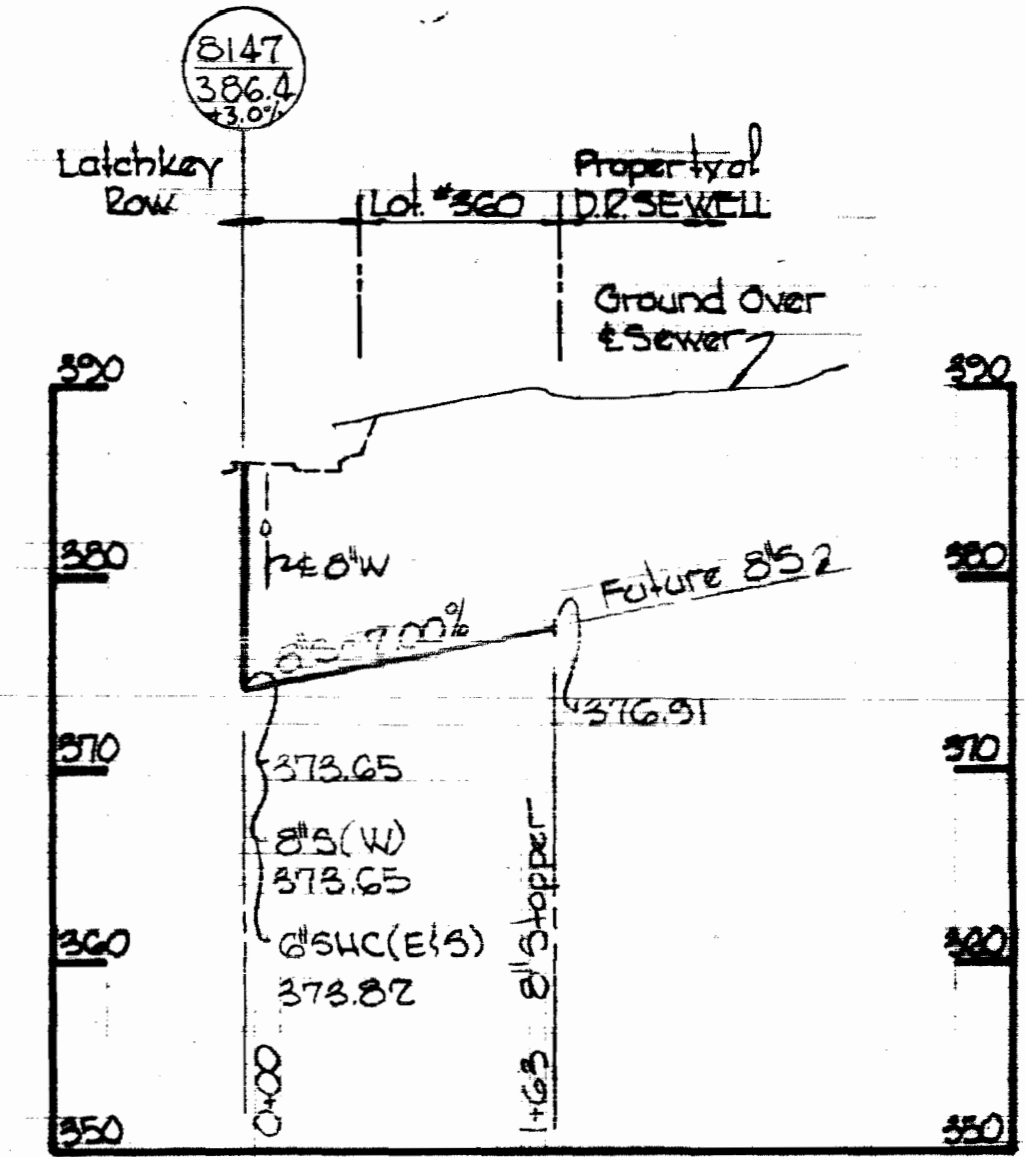
W. O. 6857-7

MAY 20, 1974





**PROFILES**  
 Scale: H: 1"=100'  
 V: 1"=10'



*Kenneth A. McCord*

Village of Owen Brown  
 Part 4 of 5  
 Section 4, Area 1  
 Contract No. C-2600 DW/S

<b>WHITMAN, REQUARDT &amp; ASSOCIATES</b> ENGINEERS 1304 ST. PAUL ST. BALTIMORE, MARYLAND	<b>DEPARTMENT OF PUBLIC WORKS</b> HOWARD COUNTY, MARYLAND 6-4-74 <i>W. O. Lubat</i> CHIEF-BUREAU OF ENGINEERING	<b>CONTRACT NO. C-2600-DW/S</b>	<b>PROFILES AND DETAIL OF WATER AND SEWER MAINS</b>	<b>COLUMBIA VILLAGE OF OWEN BROWN ELECTION DISTRICT GUILFORD No. 8</b>	<b>DRAWING NO. 5 OF 5 SCALE AS SHOWN</b>
--	---	---------------------------------	---	--	--