

GENERAL NOTES

1. Approximate location of existing mains are shown. The Contractor shall take all necessary precautions to protect existing mains and services and maintain uninterrupted supply. Any damage incurred shall be repaired immediately.
2. All pipe elevations shown are invert elevations.
3. The Contractor shall locate existing utilities a minimum of two weeks in advance of construction operations in vicinity of utilities.
4. For all standard details see standards bound in Specifications.
5. All horizontal and vertical controls are based on Maryland State Datum.
6. Clear all utilities by a minimum of 6', clear all poles by a minimum of 2'-0" or tunnel as required.
7. Ground over & water and/or sewer was taken from contour maps based on aerial photography except where labeled existing and dated.
8. All water mains to have a minimum of 3 1/2' cover.
9. Payment for strapping fire hydrants and valves will be included in unit price bid for furnishing and laying of water mains.
10. Block all fittings with concrete see standards bound in Specifications.
11. All fire hydrants shall be strapped and buttressed in accordance with standard details.
12. Bury Line elevations on fire hydrants shall be set to elevations shown on drawings.
13. All manholes to be 4'-0" inside diameter.
14. The Contractor shall provide a joint in all sewer mains within 2'-0" of exterior manhole walls.
15. All W.M.'s to be 1/2" diameter unless otherwise noted.
16. All 10" S shall be A.C.P. Class 3300.

Note:
Auger Borings were made by the American Testing and Engineering Company for Howard Research and Development Corporation in February, 1974. Bottom of boring is shown. Refusal (if encountered) is shown. Complete logs are available at the Howard County, Department of Public Works.

- BENCH MARKS -

- W.R.I.A. B.M.#22 Elev 355.66
Wall in Guy Pole, east side of Oakland Mills Road.
- W.R.I.A. B.M.#23 Elev 305.06
Galvanized Boat Spike base of G.E. Pole # 326495, west side of Oakland Mills Road.

NOTE:
1. Existing 10" W is A.C.P. Class 200.
2. Uncover Existing 10" W 5 min. each side of 10" x 15 1/2".
3. 10" x 15 1/2" must not be located closer than 5' to existing joint on 10" W.

REV#	REV DATE	DESCRIPTION
1	8-22-74	ADDED M.I. 7896-A

WHITMAN, REQUARDT & ASSOCIATES
ENGINEERS
1304 ST. PAUL ST.
BALTIMORE, MARYLAND

DEPARTMENT OF PUBLIC WORKS
HOWARD COUNTY, MARYLAND
6-A-74
DATE

CONTRACT NO. 4597DWAS

PLAN OF WATER AND SEWER MAINS

COLUMBIA VILLAGE OF OWEN BROWN
ELECTION DISTRICT GUILFORD NO. 6

DRAWING NO. 2 OF 3
SCALE 1" = 50'

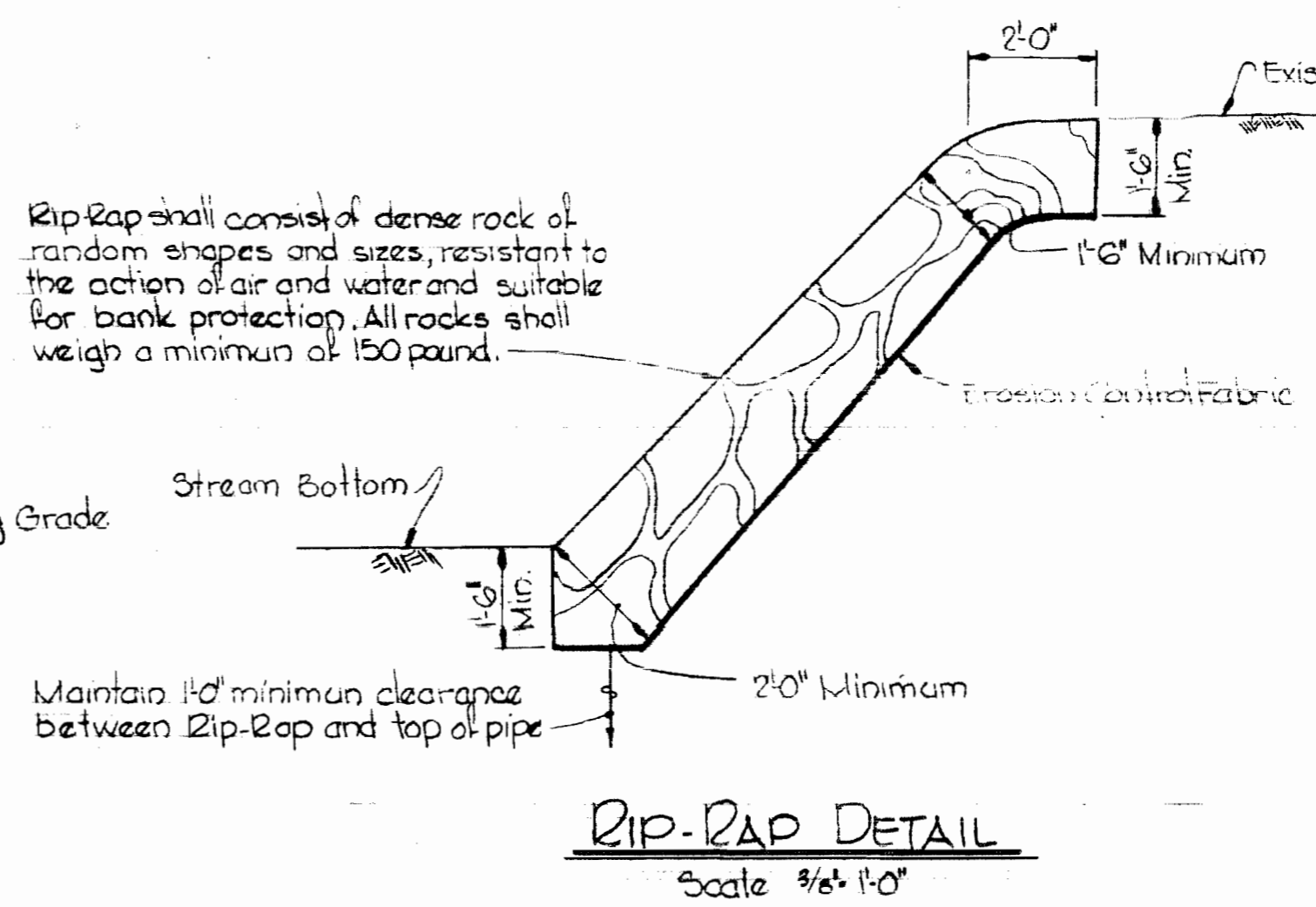
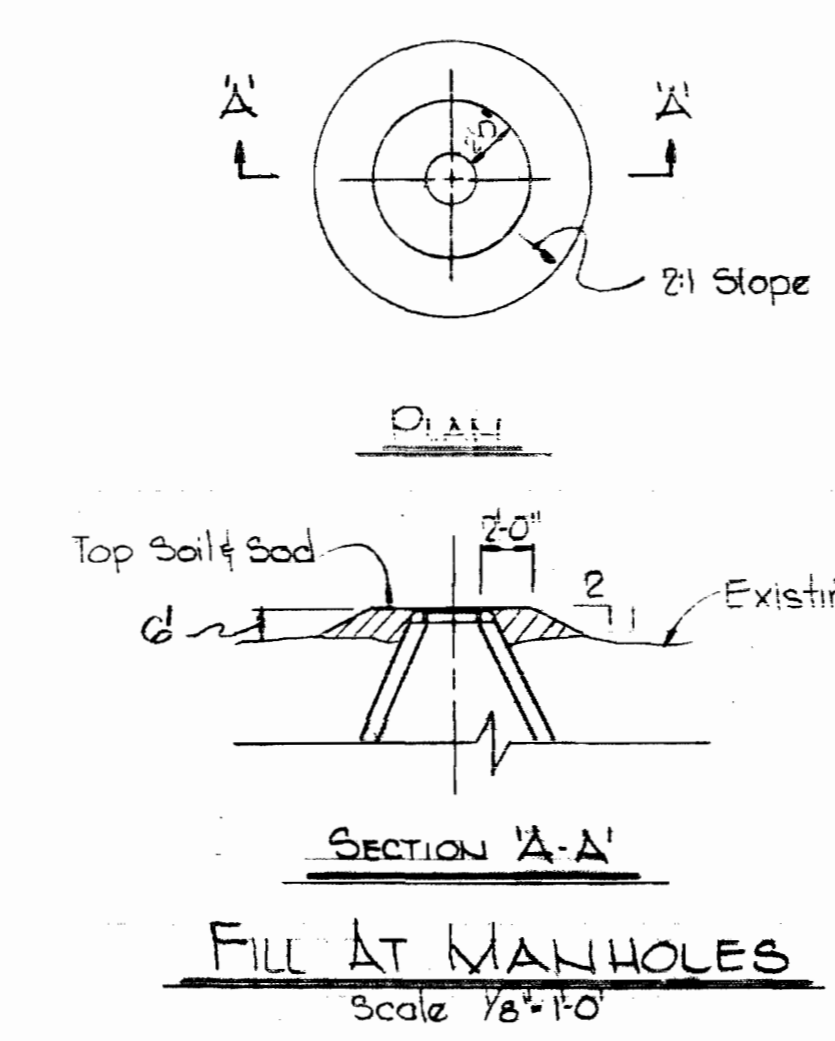
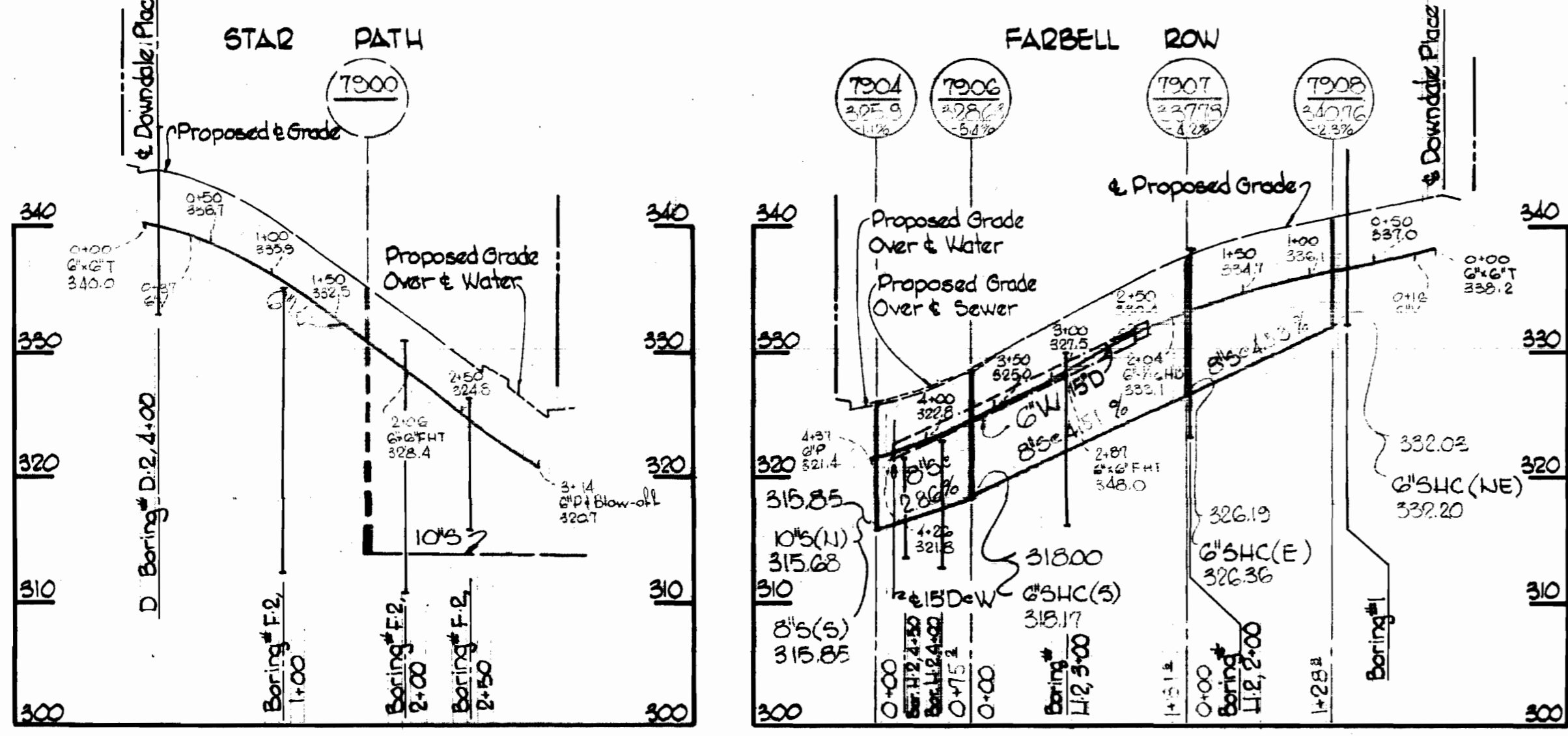
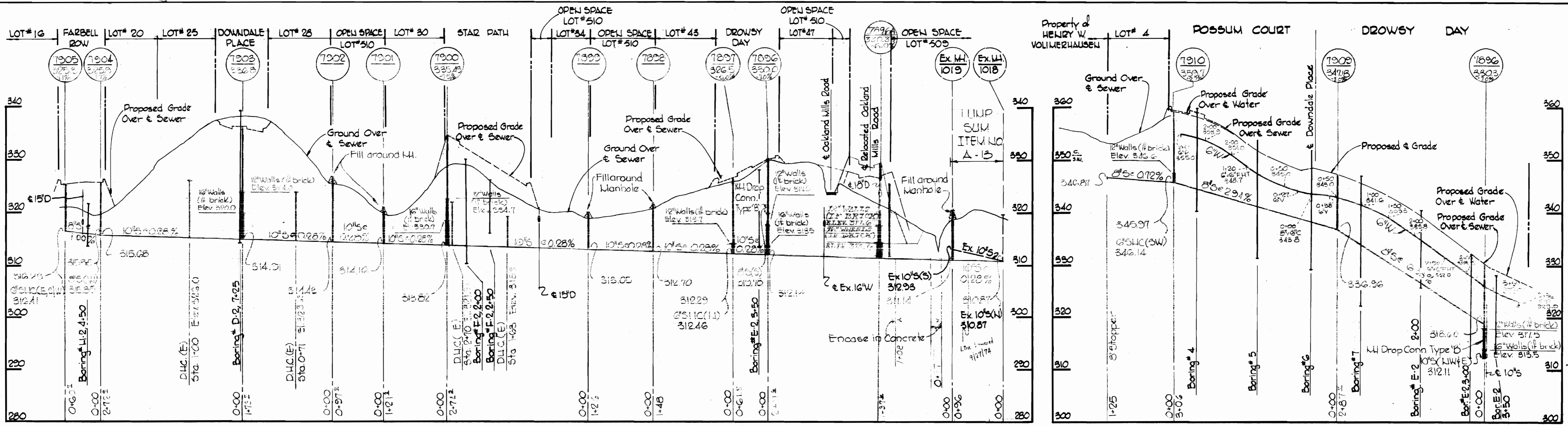
APRIL 29, 1974
As Built 12-20-74



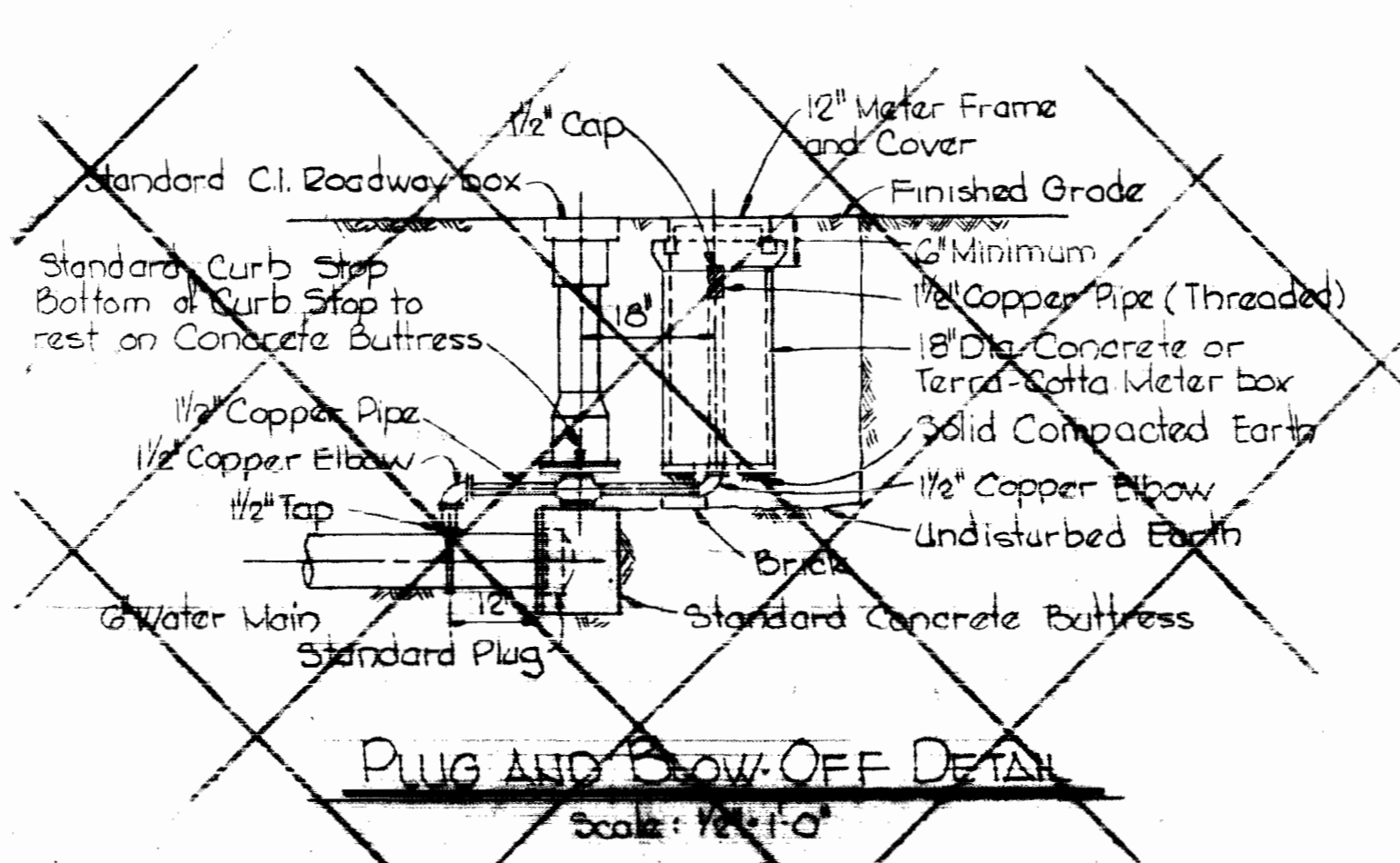
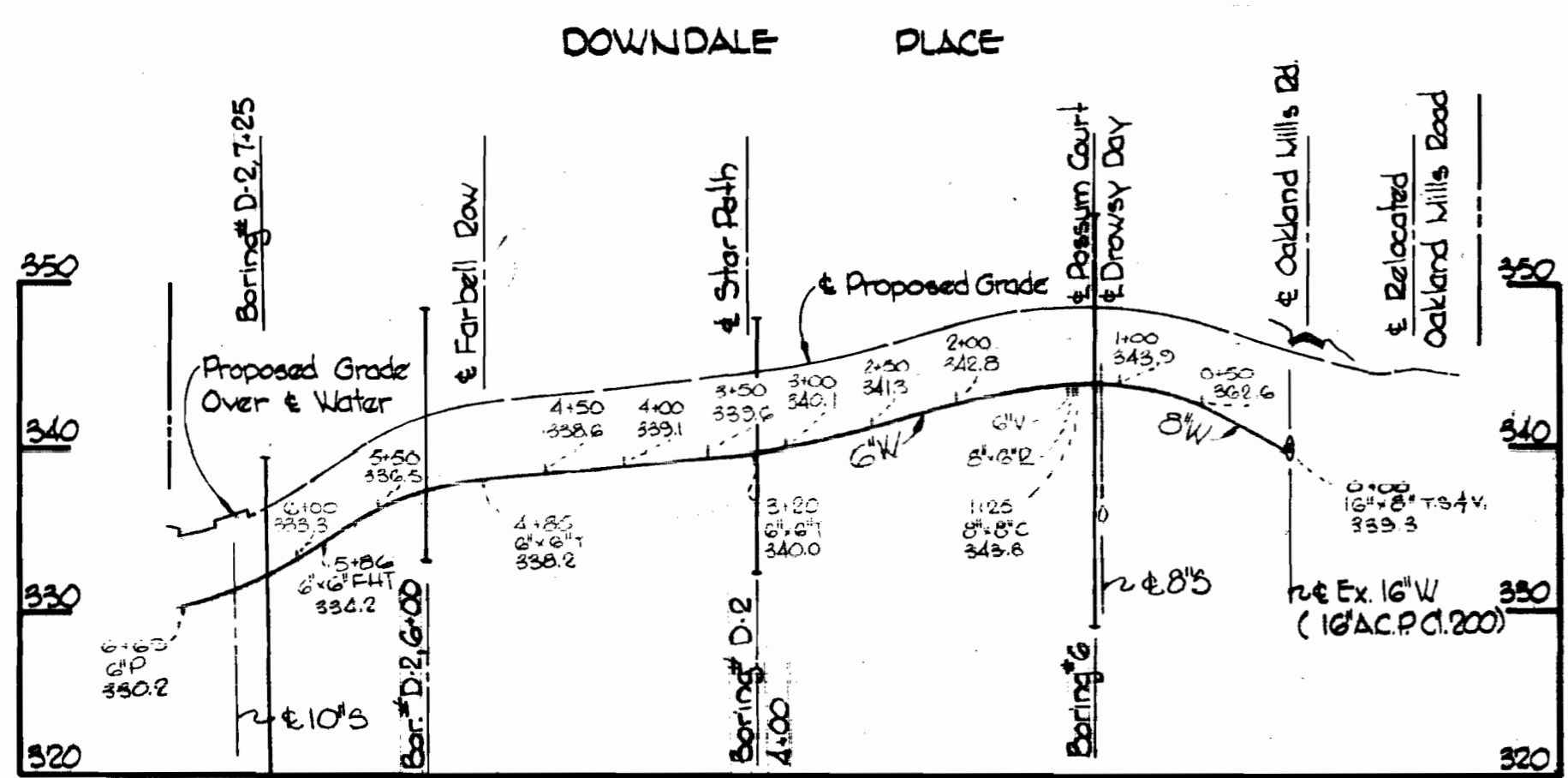
H. M. ...
Village of Owen Brown
Part 1 of 3
Section 4 Area 1
Contract No. C-2597 DWAS

WS 597 w/s 1/2

W. O. 6851-2



NOTES:
 1. Erosion Control Fabric shall be as manufactured by: Cottrillage Mills Inc., Erosion Control Div., 122 W. 66th Street, Cincinnati, Ohio, Laurel Erosion Control Cloth as manufactured by Laurel Plastics Inc., Madison, Maine, or approved equal.
 2. Rip-Rap shall be placed on each side of pipe as shown.



(NOT INCLUDED IN THIS CONTRACT)

Rev. #	Rev. Date	Description
1		Added M4 7896-A.

Professional Engineer & Land Surveyor
 Kenneth J. Meland

WHITMAN, REQUARDT & ASSOCIATES ENGINEERS 1304 ST. PAUL ST. BALTIMORE, MARYLAND	DEPARTMENT OF PUBLIC WORKS HOWARD COUNTY, MARYLAND 6-A-74 DATE	CONTRACT NO. C-2597DW85 W. O. Palbert CHIEF BUREAU OF ENGINEERING	PROFILES OF WATER AND SEWER MAINS	COLUMBIA VILLAGE OF OWEN BROWN ELECTION DISTRICT GUILFORD NO. 6	DRAWING NO. 3 OF 3 SCALE H: 1"=100' V: 1"=10'
---	---	---	--------------------------------------	---	--