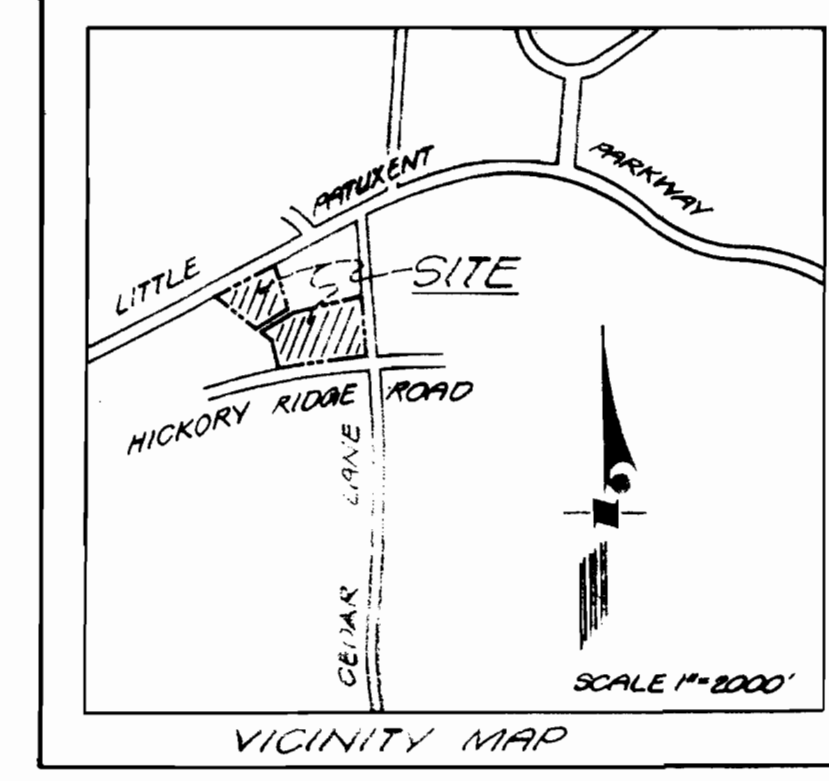


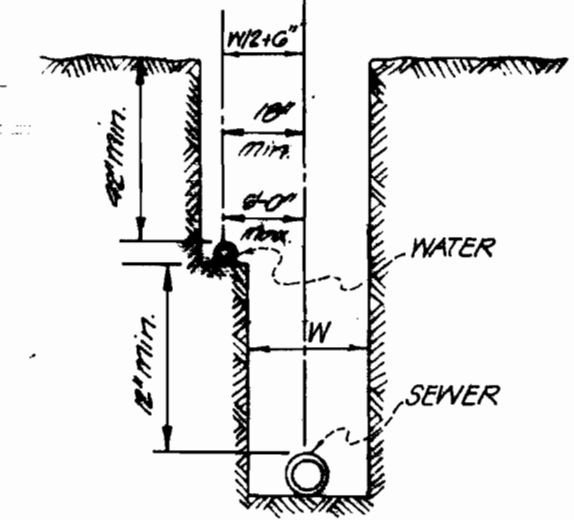
BM#4 Elev. 493.82
Spike set in root of 30" Oak

BM#5 Elev. 494.82
Nail in Washer in 12" Poplar



GENERAL NOTES

1. Approximate location of existing mains are shown. The Contractor shall make all necessary precautions to protect existing mains and services and maintain uninterrupted supply. Any damage incurred shall be repaired immediately.
2. All pipe elevations are invert elevations.
3. The Contractor shall locate existing utilities a minimum of two weeks in advance of construction operation in vicinity of utilities.
4. For all standard details see standards found in Specifications.
5. Clear all utilities by a minimum of 6'. Clear all poles by a 2'0" minimum or further as required.
6. The Contractor shall provide a joint in all sewer mains within 2'0" of exterior manhole walls.
7. All manholes shall be 4'0" inside diameter, unless otherwise noted.
8. All water mains to have a minimum of 3'6" cover unless otherwise noted.
9. Block all fittings with concrete, standards found in Specifications.
10. Bury line elevation on Fire Hydrants shall be set to the elevation shown on the drawings.
11. All Fire Hydrants shall be strapped to the tee and shall be buttressed with concrete, see standard details. All cost incurred shall be included in the unit price bid for furnishing and laying water mains.
12. All horizontal and vertical controls are based on Maryland State Coordinates. All vertical controls are based on USGS Datum.
13. All water mains shall be CIP, DIP or ACP unless otherwise shown.
14. All valves shall be strapped to tee in accordance with standard details.
15. All water meters to be single 1" meters set in 18" dia. concrete meter vault W/C to be 1'6".
16. Contractor shall notify the following utilities or agencies at least five (5) days before starting work on these plans:
 State Highway Administration - 501-5533
 Baltimore Gas & Electric Co. - Underground Electric Distribution Engineering - Damage Control - 254-8201
 Undergound Gas Distribution Engineering - 550-0100
 Chesapeake and Potomac Telephone Co. - 725-2070
 American Telephone & Telegraph - Cable Location 301-393-3553
 Colonial Pipeline Co. - 701-4041
17. Trees are to be protected from damage to maximum extent. Trees located within the construction strip are not to be removed or damaged by the contractor.
18. Contractor shall remove trees, stumps and roots along line of excavation as directed by the Engineer. Payment for such removal shall be included in the unit price bid for excavation and backfill for water and sewer mains.
19. Place regulation "Men Working" and warning signs as required to comply with Maryland State Highway Administration Manual of Traffic Control for Highway Construction and Maintenance Operation.

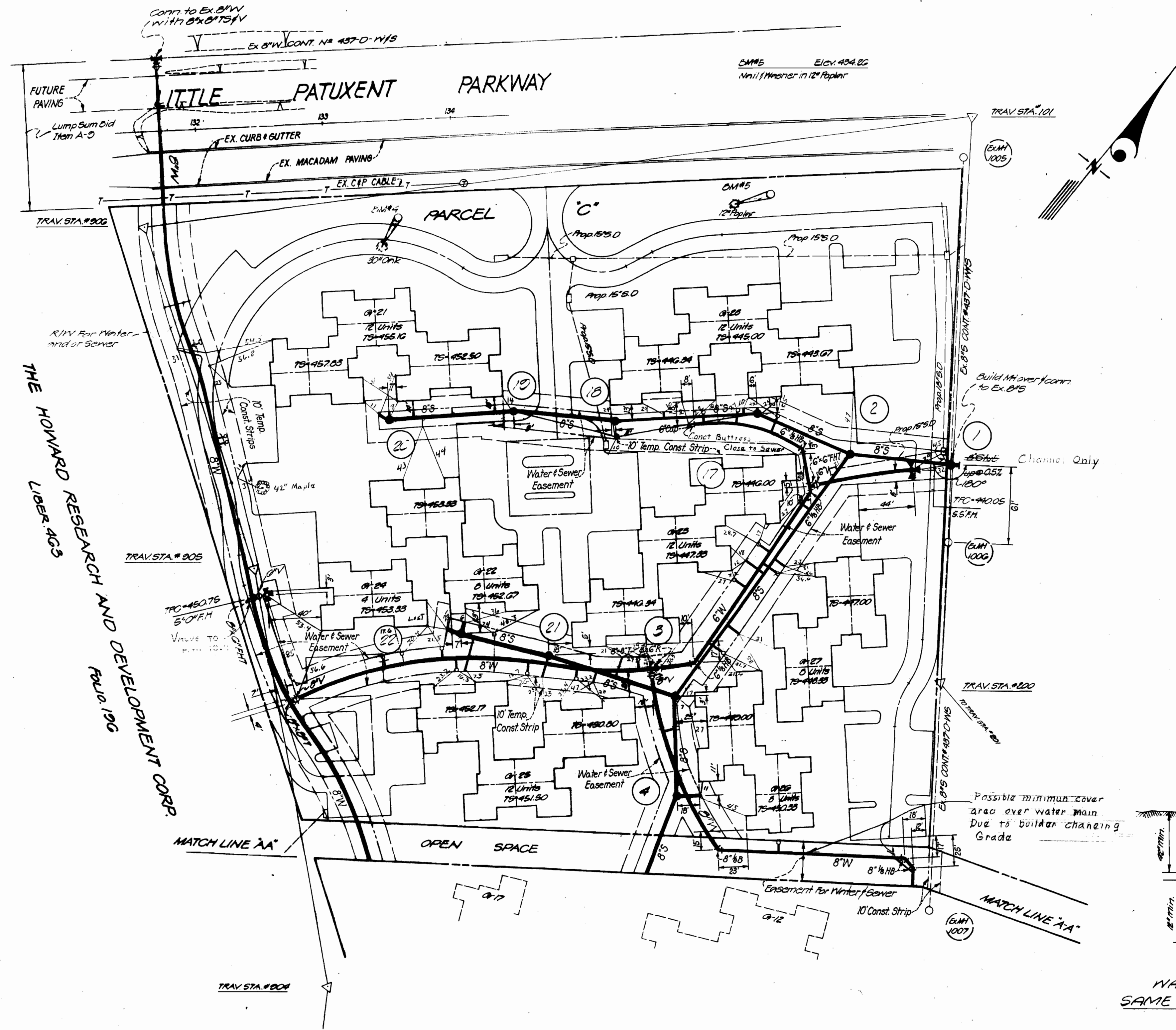


WATER & SEWER
SAME TRENCH DETAIL
No Scale

QUANTITIES	
SIZE	LENGTH
6" Water	1422
8" Water	2220
8" Sewer	3235
Fire Hydrants	5

NO OF DWELLING UNITS PARCEL C/D
 PARCEL 'C' - 76 UNITS
 PARCEL 'D' - 132 UNITS
 208 UNITS TOTAL

ALL UNITS SHOWN ON THIS PLAN ARE QUADRANTUM



ENGINEERS PLANNERS SURVEYORS
JOHNSON MCCORDIC THOMPSON P.A.
 1620 ELTON ROAD
 SILVER SPRING, MARYLAND
 20908

DEPARTMENT OF PUBLIC WORKS
 HOWARD COUNTY, MARYLAND
 4-15-74
 DATE

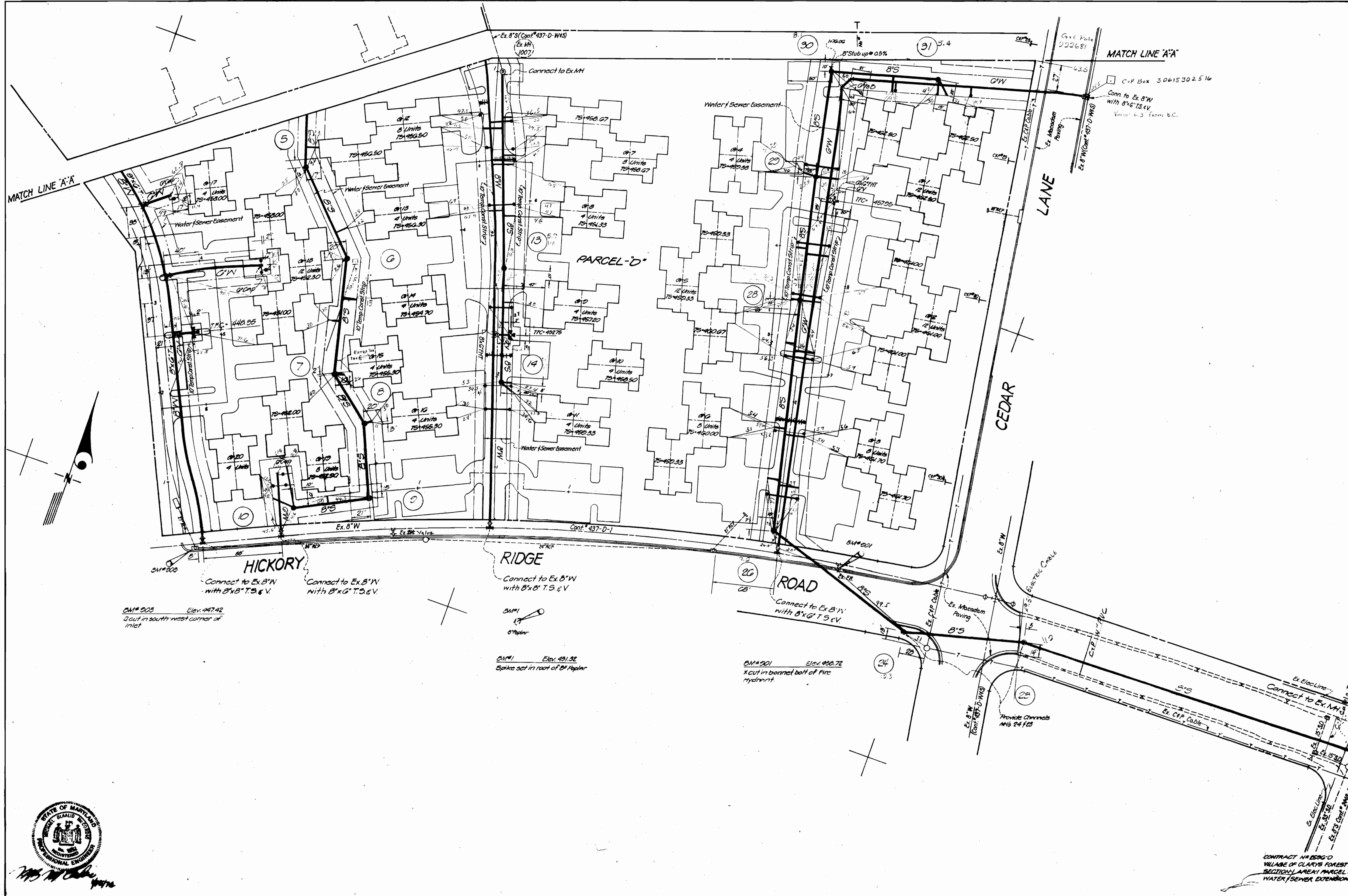
CONTRACT NO. **1596-DWS**

PLAN OF
WATER & SEWER MAINS

PARCEL C/D
VILLAGE OF CLARYS FOREST
 SECTION - 1 AREA - 1
 5TH ELECTION DISTRICT HOWARD CO. MARYLAND

DRAWING NO. 1 OF 3 SCALE 1" = 50'

WS 596 WDS/



ENGINEERS PLANNERS SURVEYORS
JOHNSON MCCORDIC THOMPSON P.A.
 1620 ELTON ROAD
 SILVER SPRING, MARYLAND
 20910

DEPARTMENT OF PUBLIC WORKS
 HOWARD COUNTY, MARYLAND
 4-15-74
 DATE

CONTRACT NO. **1520GOWS**

PLAN OF
WATER/SEWER MAINS

PARCEL D
VILLAGE OF CLARYS FOREST
 SECTION - 1
 AREA - 1
 5TH ELECTION DISTRICT HOWARD CO, MARYLAND

DRAWING NO. 2	SCALE 1"=50'
OF 3	

As Built 11/12/74 2-113-77

2/S.P.M. - W & S/2
 SW

SEWERS TO SERVE GROUPS 21 & 28

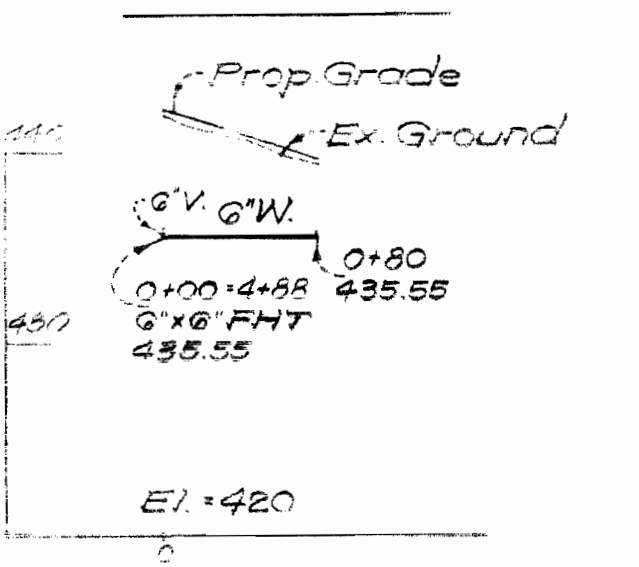
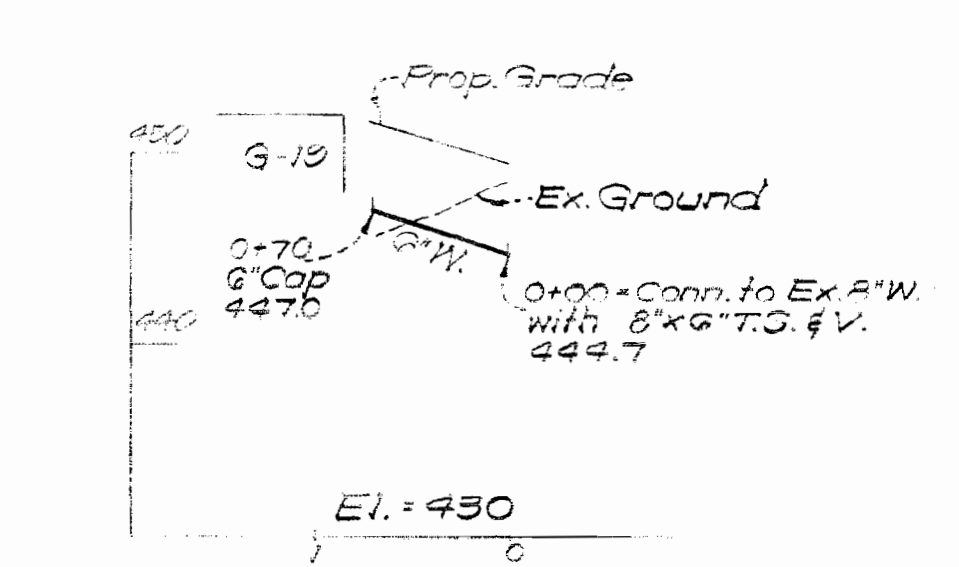
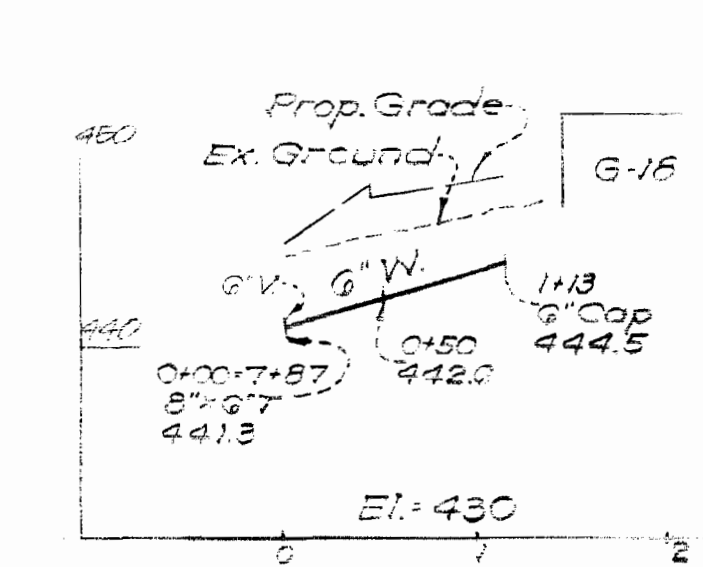
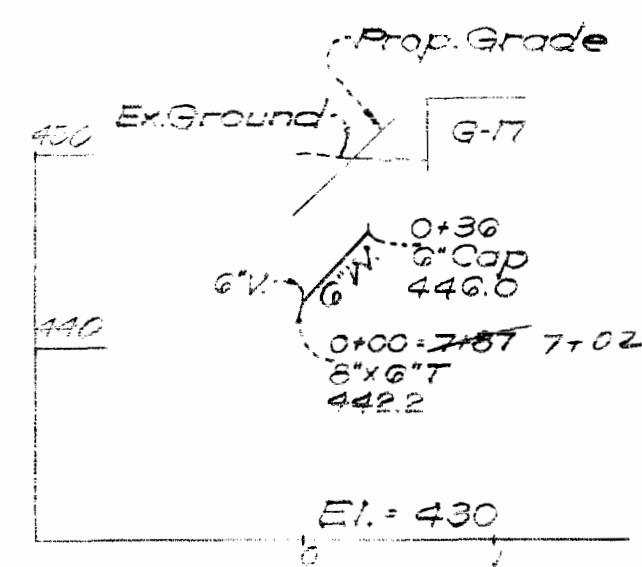
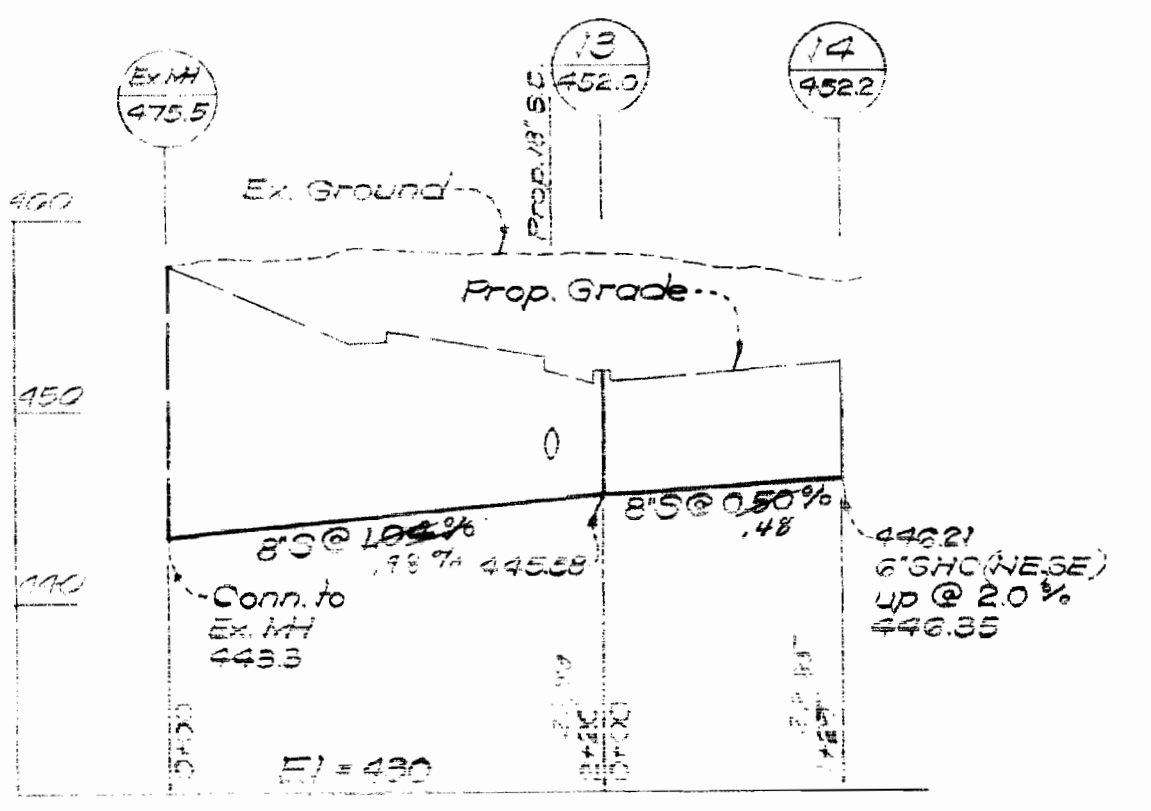
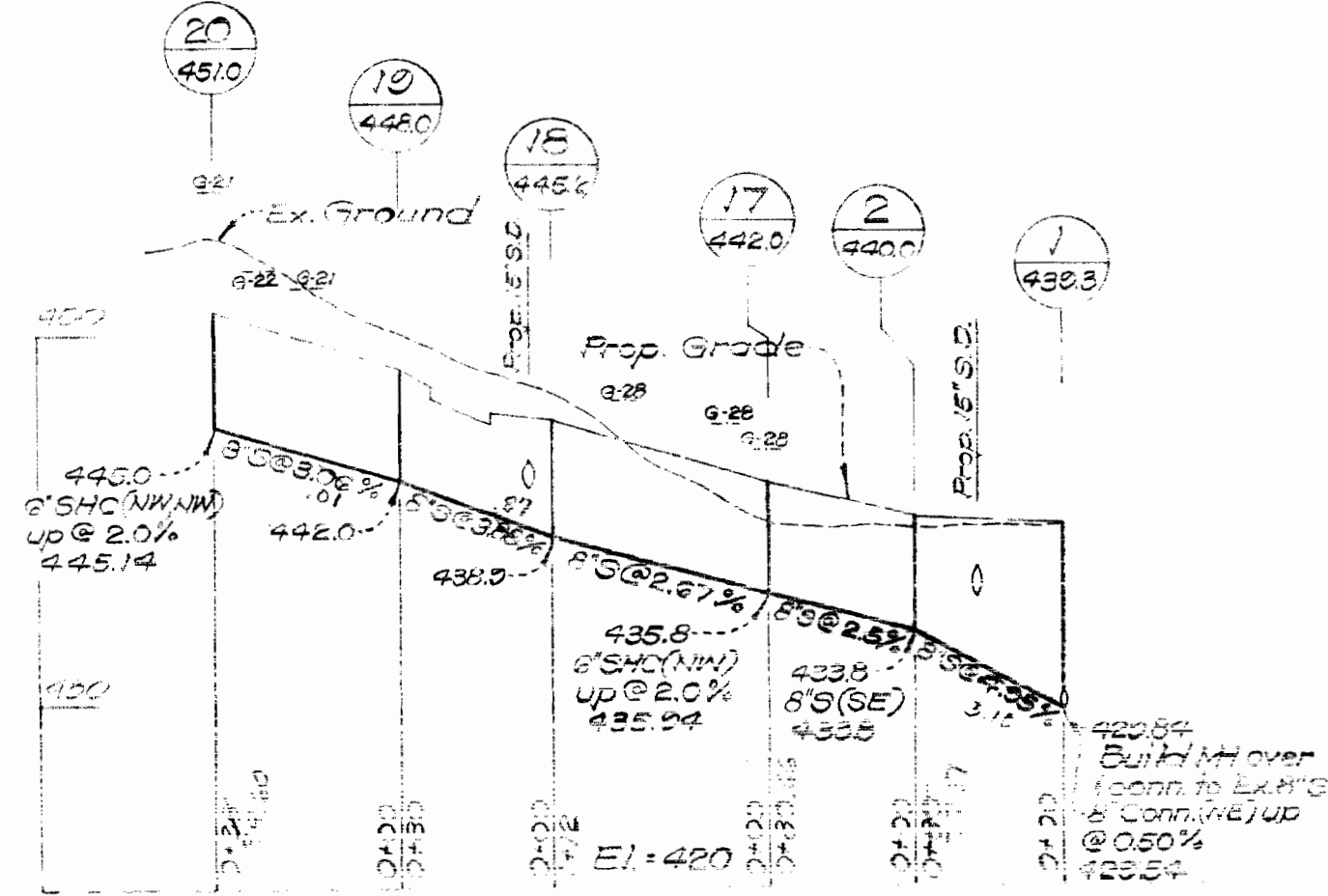
SEWER FROM GROUP 10 TO EX.MH@GROUP 7

WATER TO SERVE GROUP 17

WATER TO SERVE GROUP 18

WATER TO SERVE GROUPS 19 & 20

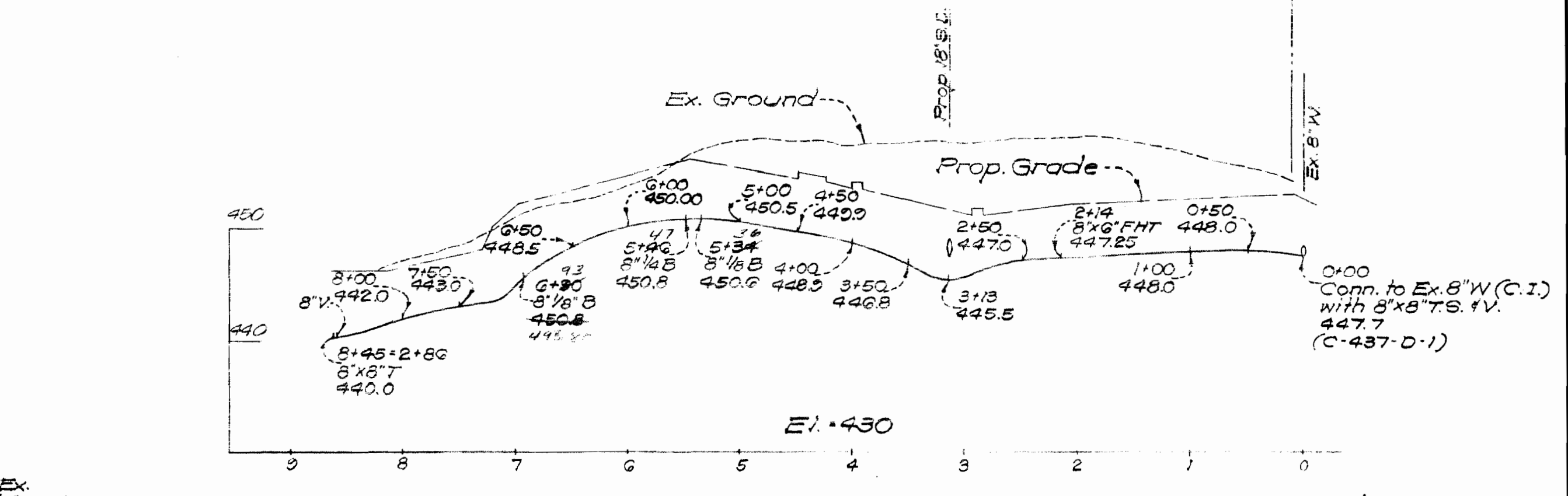
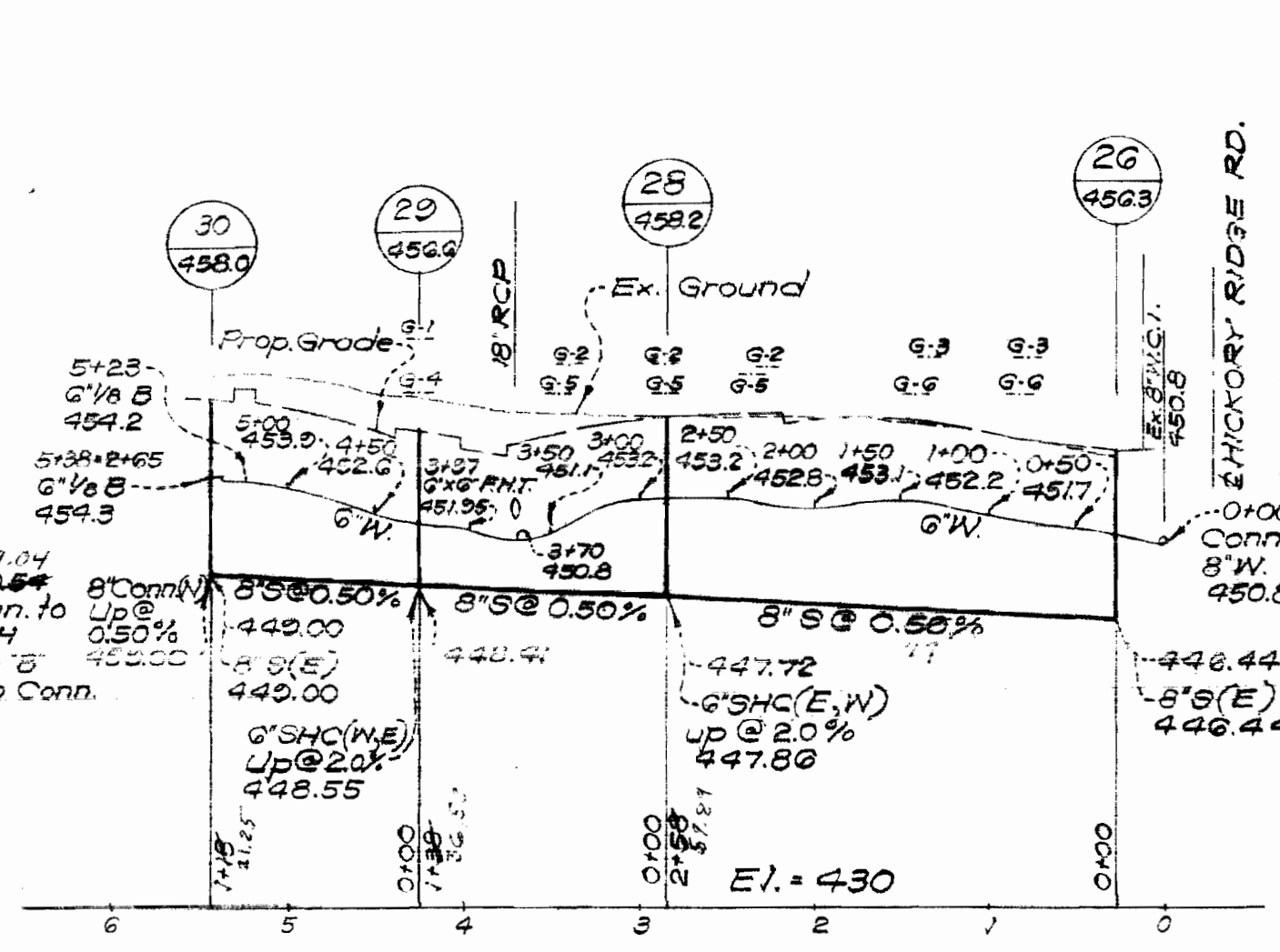
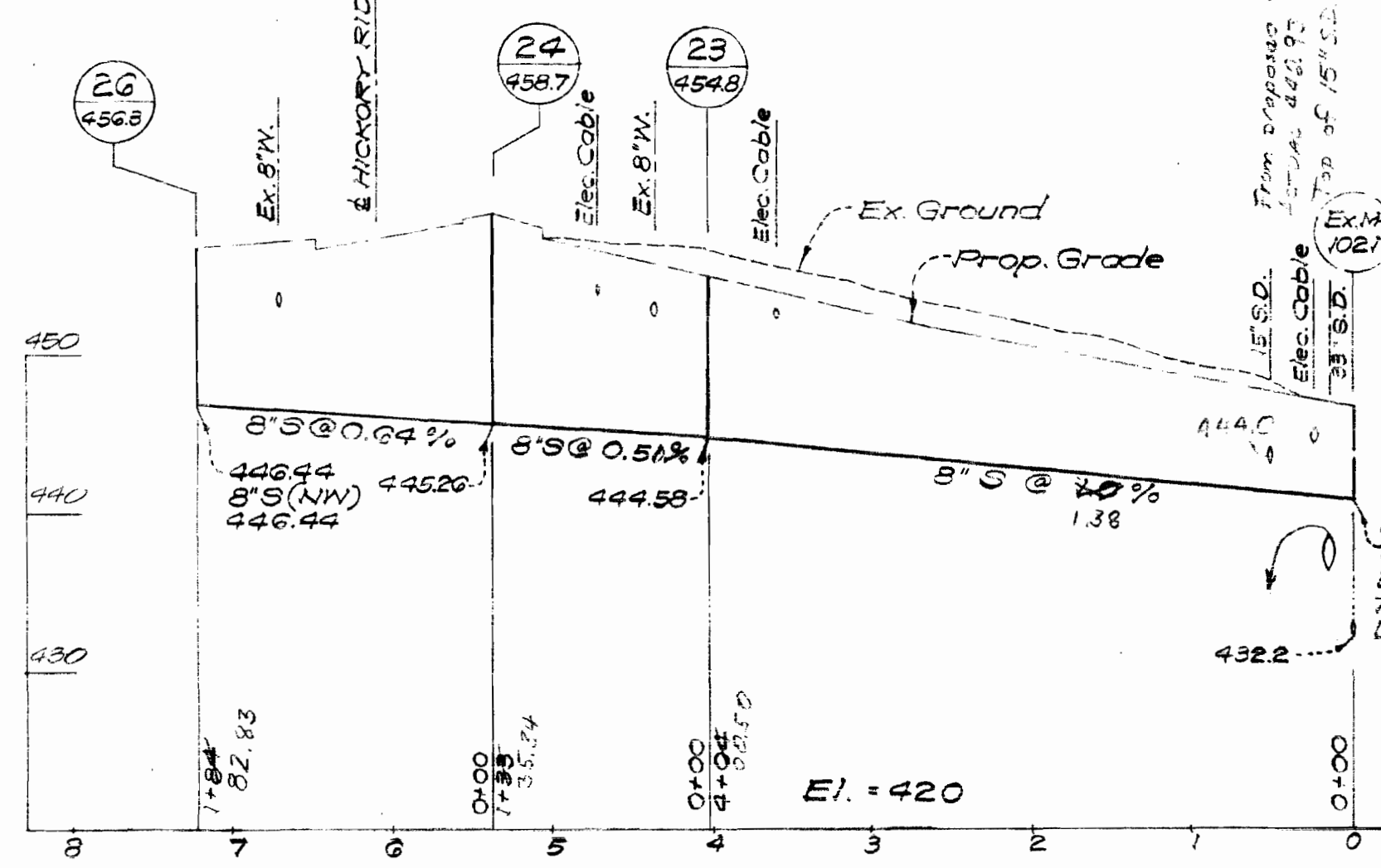
F.H. LEAD



OUTFALL SEWER HICKORY RIDGE ROAD

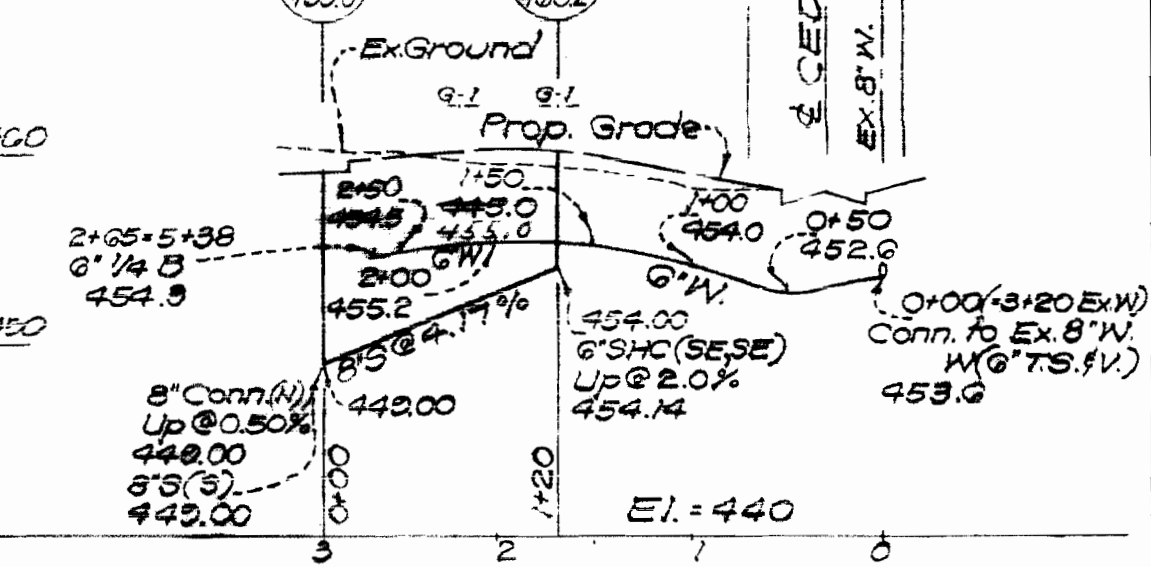
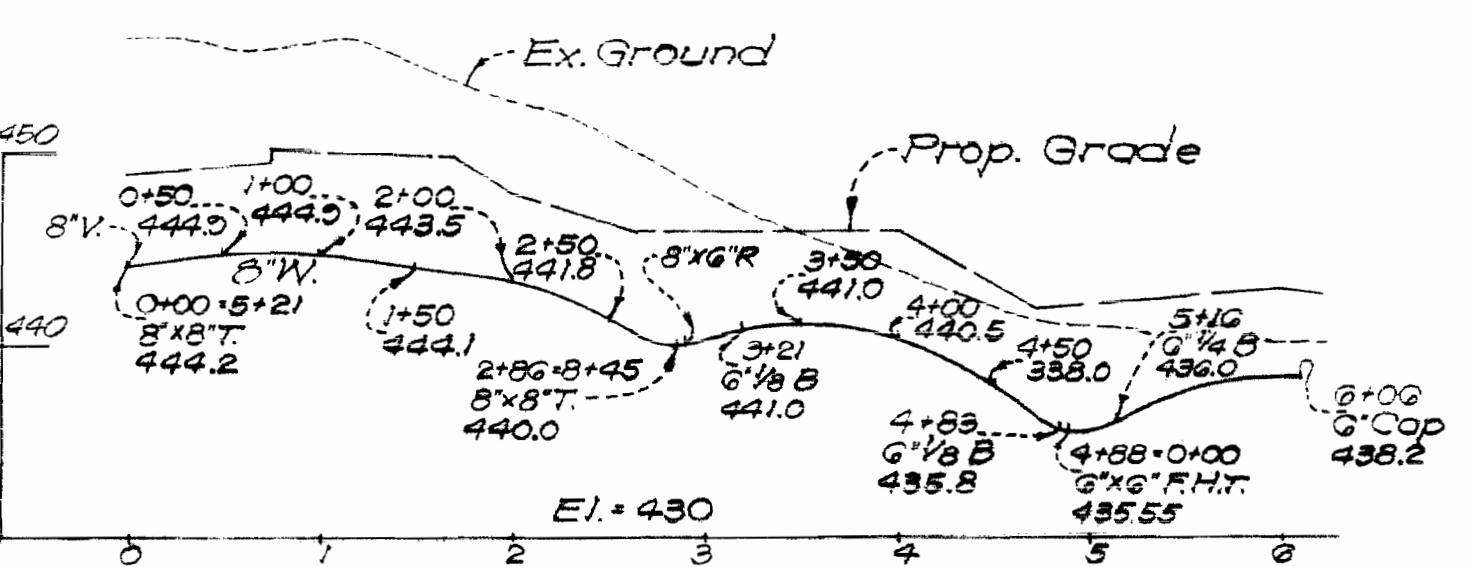
WATER & SEWER TO SERVE GROUP 1 TO GROUP 6

WATER TO SERVE GROUP 26



WATER TO SERVE GROUPS 23, 27 & 28

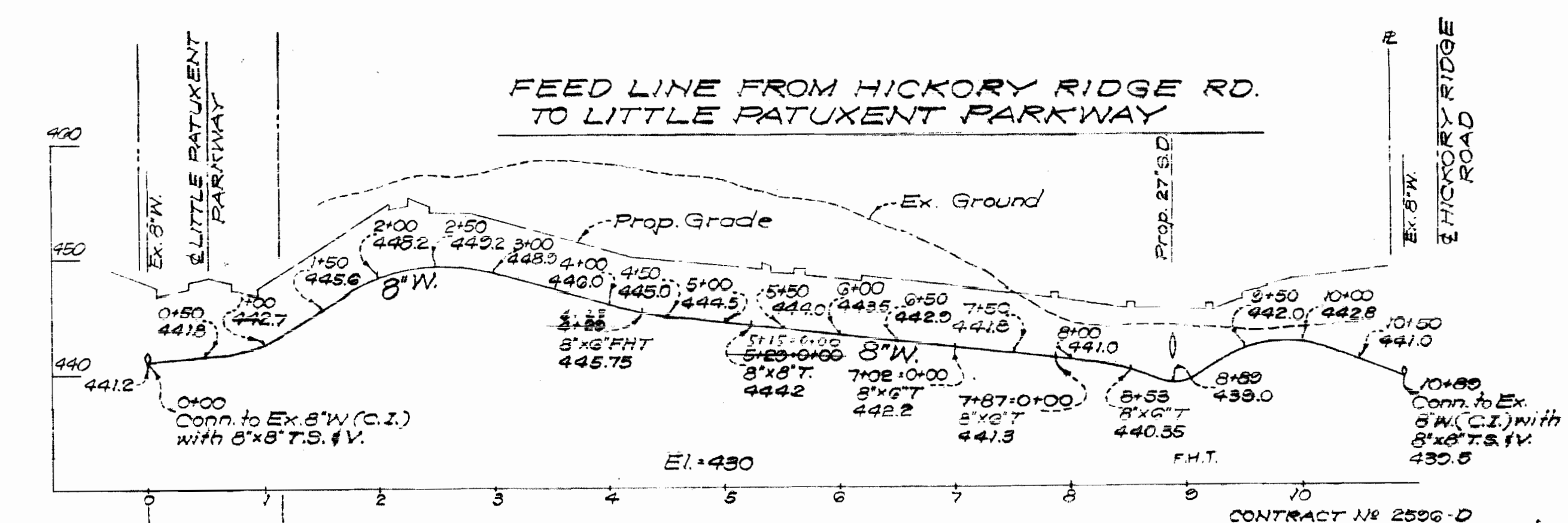
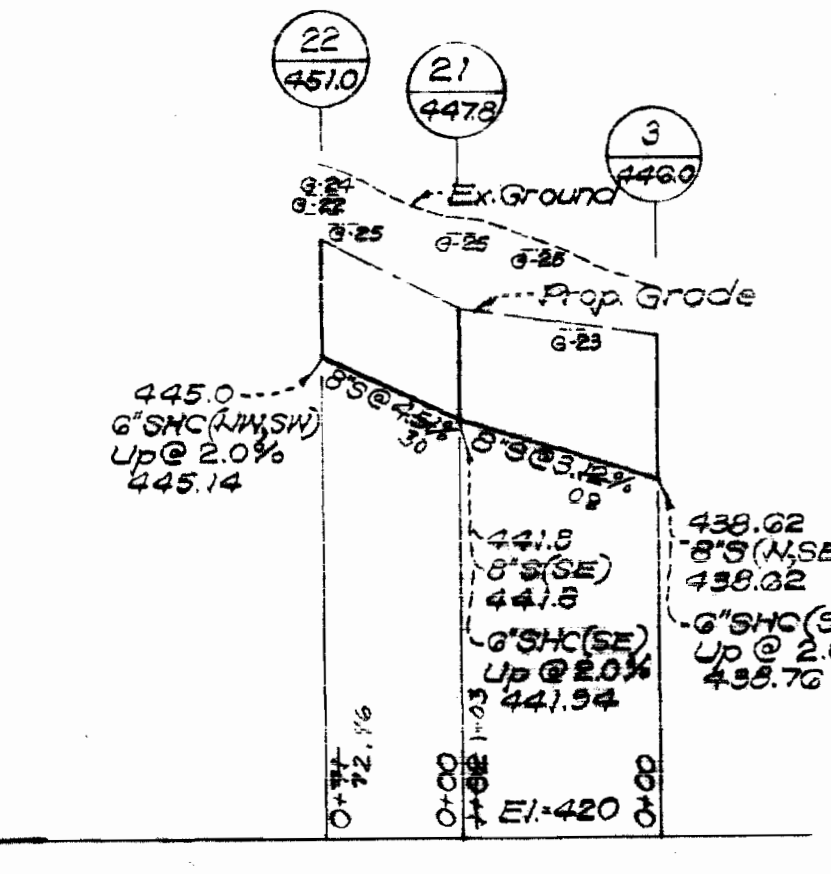
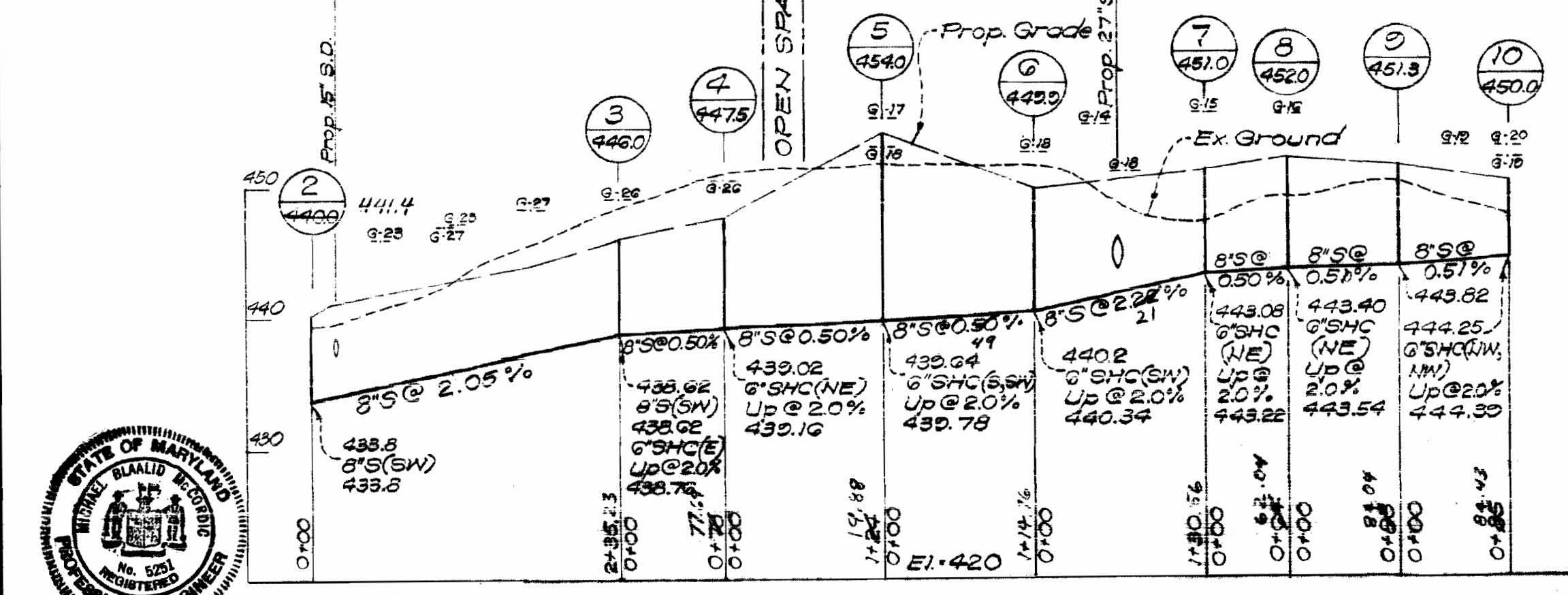
WATER & SEWER TO SERVE GROUP 1



SEWER TO SERVE GROUP 20 TO GROUP 28

SEWER TO SERVE GROUPS 22 & 24

FEED LINE FROM HICKORY RIDGE RD. TO LITTLE PATUXENT PARKWAY



ENGINEERS PLANNERS SURVEYORS JOHNSON, MCCORD, THOMPSON, P.A. 1620 ELTON ROAD SILVER SPRING, MARYLAND 20908

DEPARTMENT OF PUBLIC WORKS HOWARD COUNTY, MARYLAND CONTRACT NO. 596-D-WS DATE 4-15-74

CONTRACT NO. 596-D-WS

PLAN OF WATER & SEWER MAINS

PARCELS C1D VILLAGE OF CLARY'S FOREST SECTION 1 - AREA 1 5TH ELECTION DISTRICT, HOWARD CO., MARYLAND

DRAWING NO. 3 OF 3 SCALE Hor: 1"=100' Vert: 1"=10'

As Built 12-5-74

WS 596-WS/3