

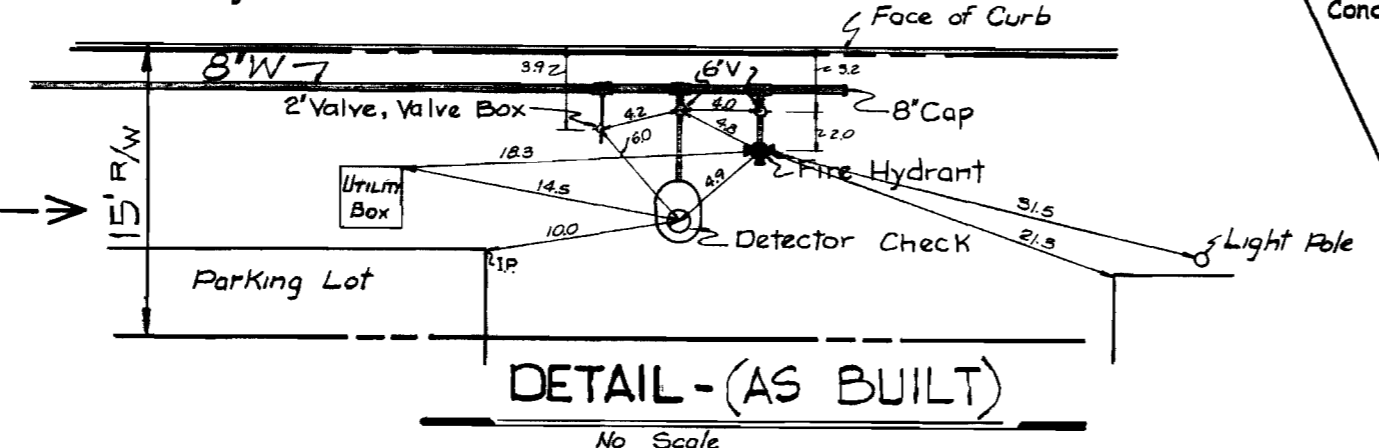
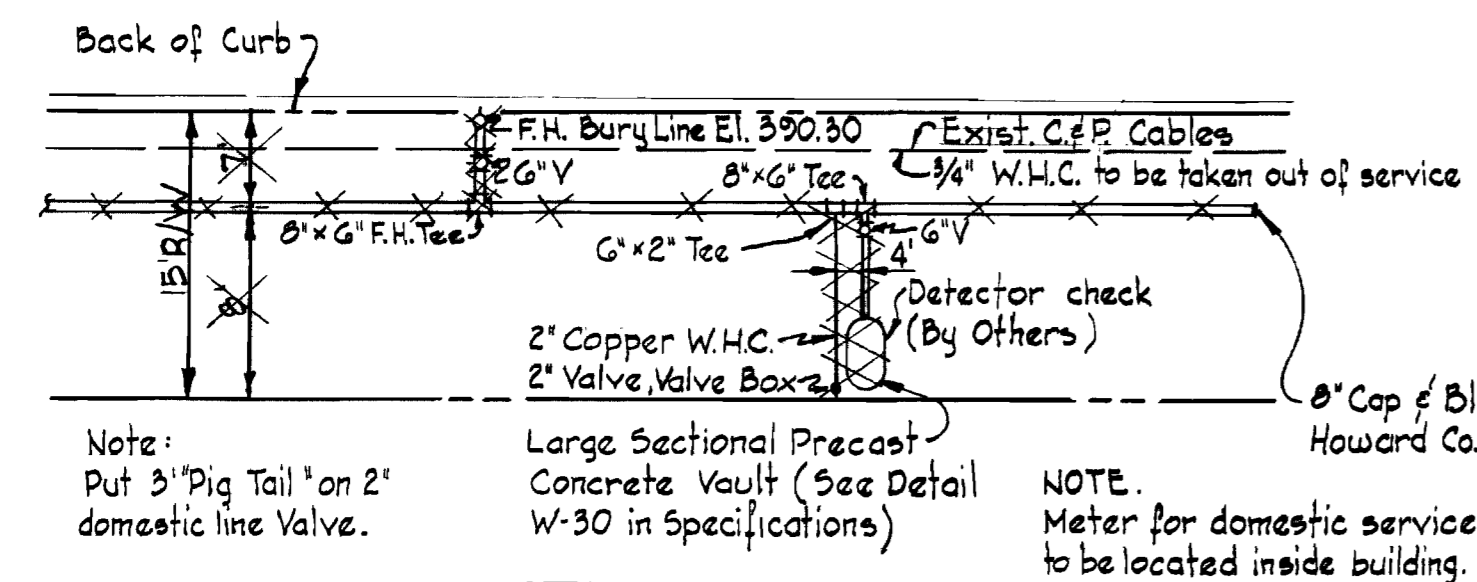
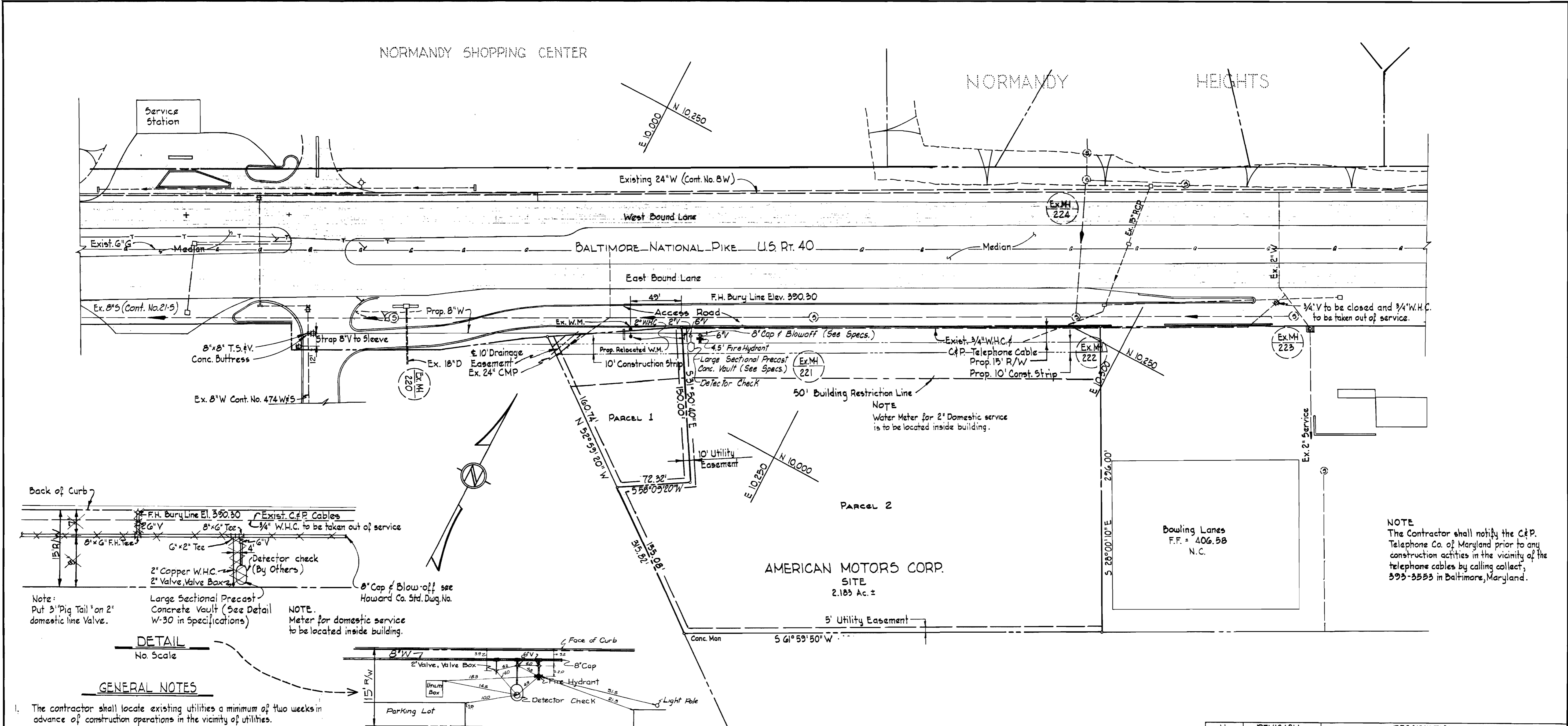
SUSPENSEX

SUSPENSEX

SUSPENSEX

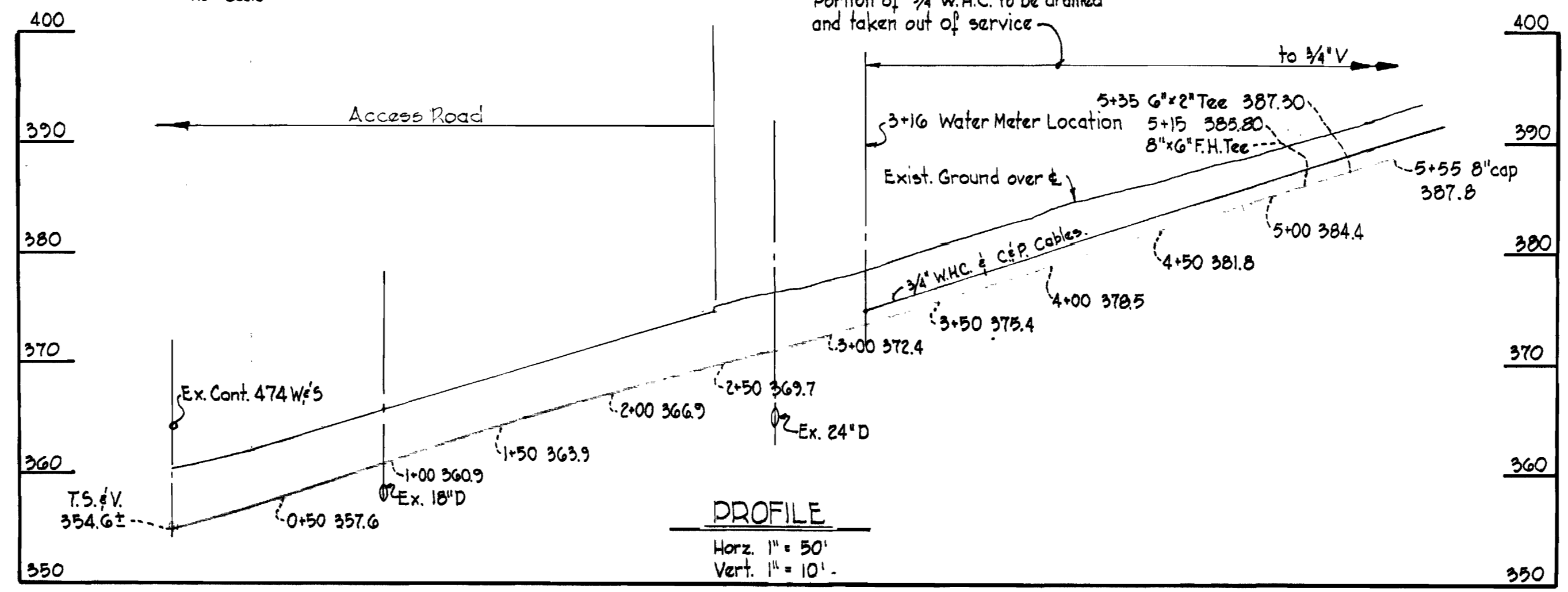
NORMANDY SHOPPING CENTER

NORMANDY HEIGHTS

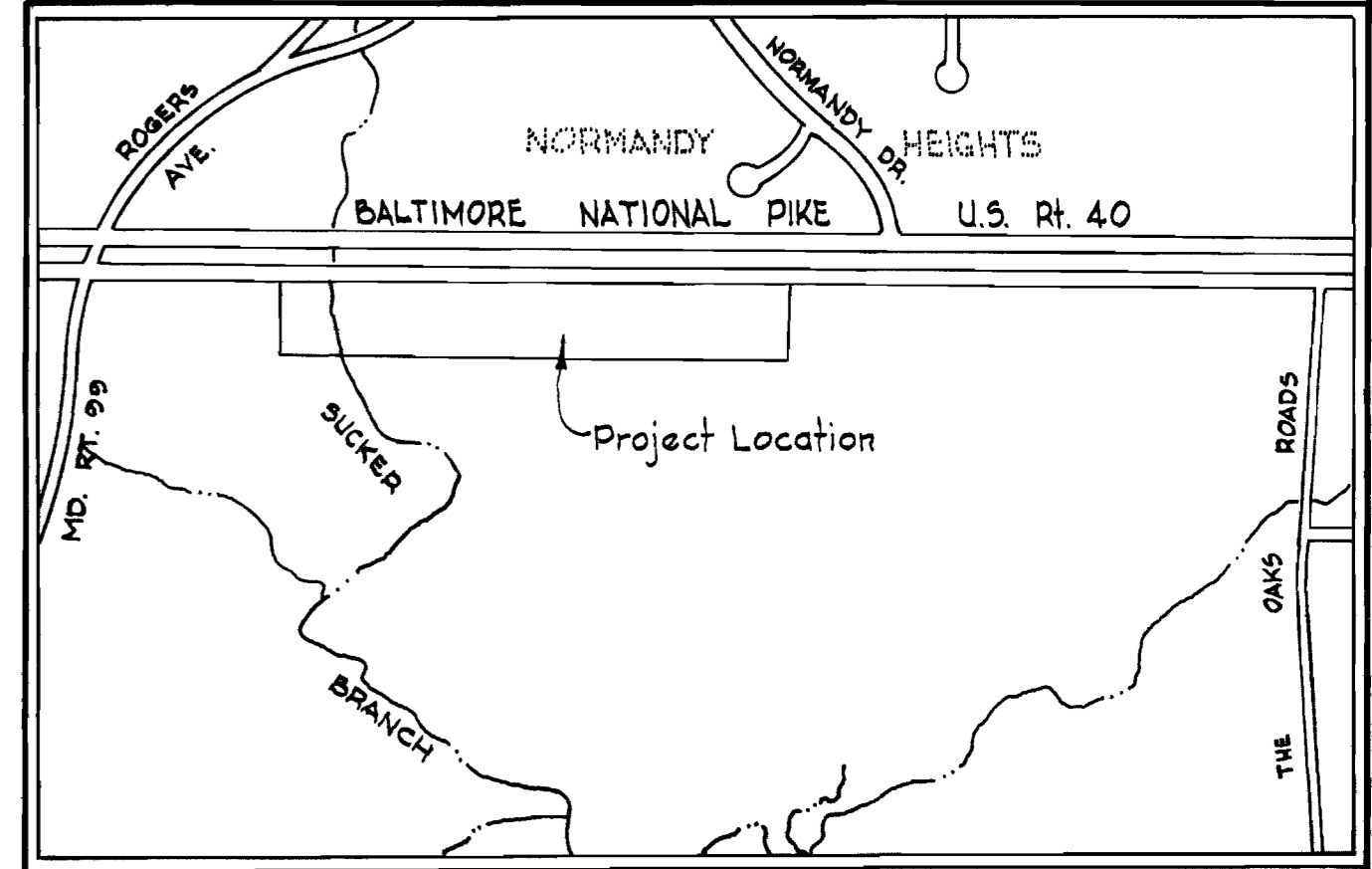


GENERAL NOTES

- The contractor shall locate existing utilities a minimum of two weeks in advance of construction operations in the vicinity of utilities.
- All pipe shall be C.I.P. class 22.
- Clear all poles by 2'-0" minimum or tunnel as required, clear all Existing Utilities by 6" minimum.
- For all standard details see standards bound in Specifications.
- All water mains shall have a minimum of 3/8" cover unless otherwise noted.
- All fire hydrants shall be strapped to tees and buttressed with concrete in accordance with standard details, and set to Bury Line Elevations shown on plan.
- All Pipe elevations shown are invert elevations.
- Approximate location of existing mains are shown. The Contractor shall take all necessary precautions to protect the existing mains and services and maintain uninterrupted supply. Any damage incurred shall be repaired immediately.



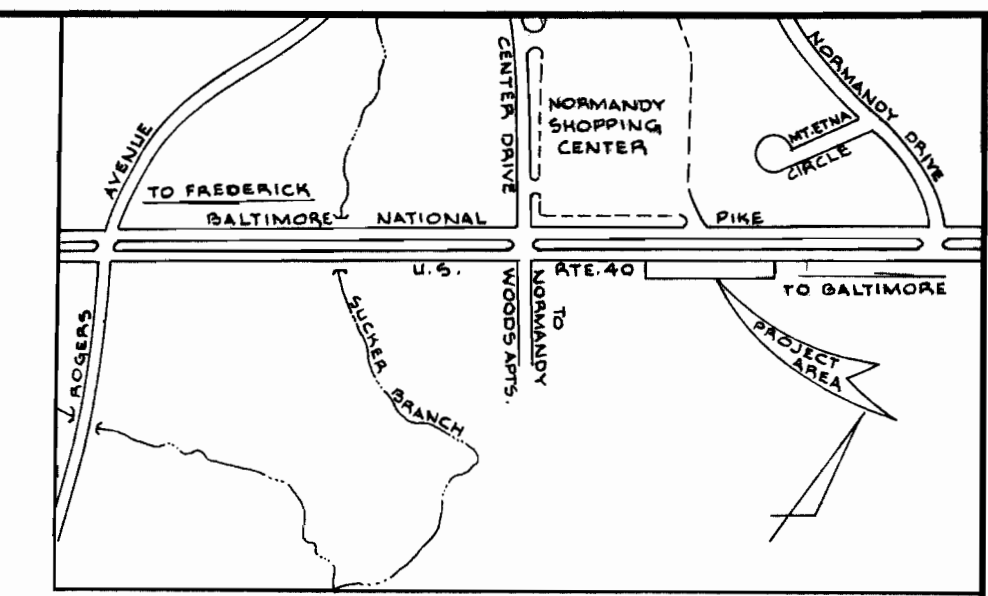
No.	REVISION	DESCRIPTION	DATE
1		Shorten 8" Water - 174' L.F.	6-13-74



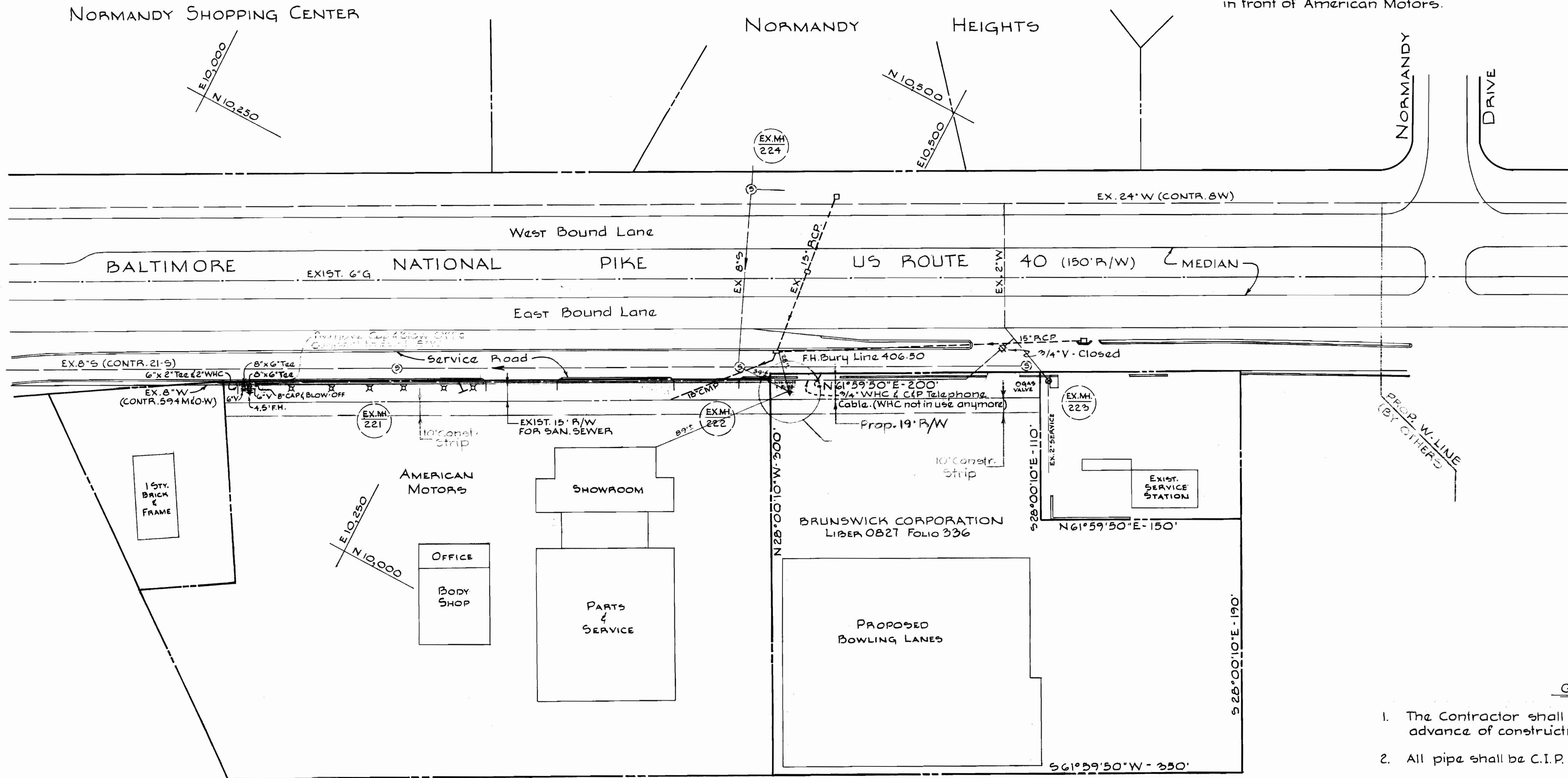
BUREAU OF ENGINEERING INSPECTION AND SURVEYS DIVISION	DEPARTMENT OF PUBLIC WORKS HOWARD COUNTY, MARYLAND 2-14-74 DATE	CONTRACT NO. 594 M80-W	PLAN AND PROFILE OF WATER MAINS	ELECTION DISTRICT ELLCOTT CITY NO. 2	DRAWING NO. 1 OF 2	SCALE AS SHOWN	Des. by M. Wilhelm
	W. O. Pilbert CHIEF BUREAU OF ENGINEERING						Chkd. by J. L. Riddle

March 29, 1974

BENCH MARK ELEV. 391.56
 Pim of MH.221. MH located in Service Road
 in front of American Motors.



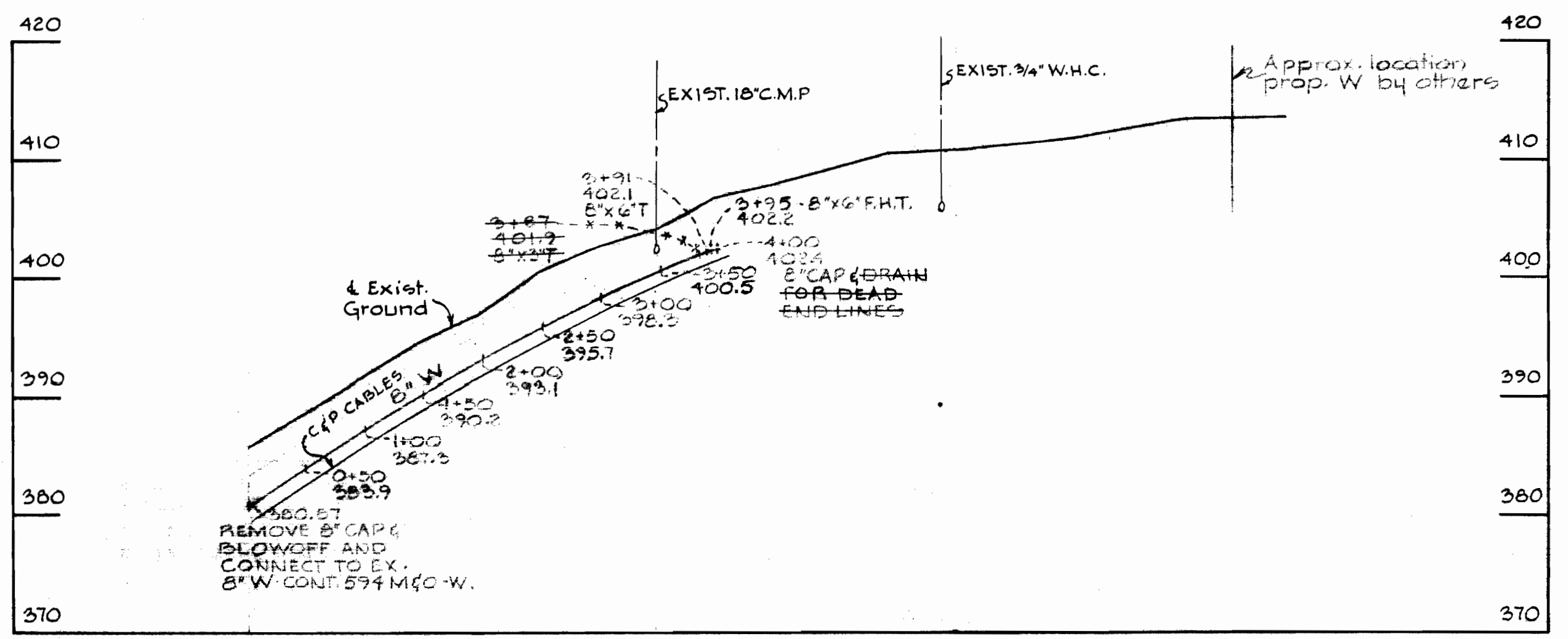
LOCATION MAP
 SCALE: 1"=600'



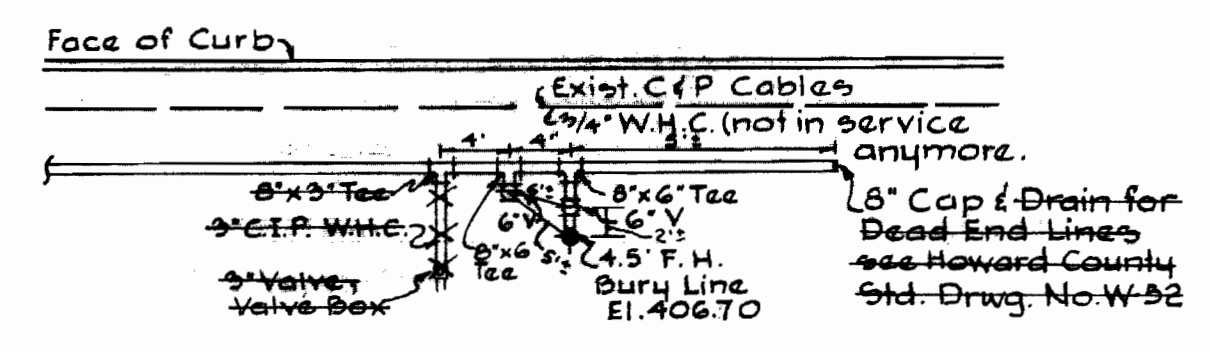
PLAN
 SCALE: 1"=50'

GENERAL NOTES

1. The Contractor shall locate existing utilities a minimum of two weeks in advance of construction operations in the vicinity of utilities
2. All pipe shall be C.I.P. Class 22.
3. All pipe elevations shown are invert elevations.
4. Clear all poles by 2'-0" minimum or tunnel as required, clear all existing utilities by 6" minimum.
5. For all standard details see standards bound in Specifications.
6. All water mains shall have a minimum of 3 1/2 ft. cover unless otherwise noted.
7. All fire hydrants shall be strapped to trees and buttressed with concrete in accordance with standard details, and set to Bury Line Elevations shown on plan.
8. Approximate location of existing mains are shown. The Contractor shall take all necessary precautions to protect the existing mains and services and maintain uninterrupted service. Any damage incurred shall be repaired immediately.
9. The Contractor shall notify the C.&P. Telephone Co. of Maryland prior to any construction activities in the vicinity of the telephone cables by calling collect, 393-3553 in Baltimore, Maryland.



PROFILE
 HORIZ. 1"=100'
 VERT. 1"=10'



DETAIL 'A'
 NO SCALE

MATERIALS		
ITEM	QUANTITY	AS BUILT
8" WATER MAIN C.I.P.	400 LF	400 LF
8" x 6" TEE	2	2
6" x 3" TEE	+	
6" VALVE	2	2
6" FIRE HYDRANT	1	1
3" VALVE VALVE BOX	+	
8" CAP & BLOWOFF AND LINES	1	1