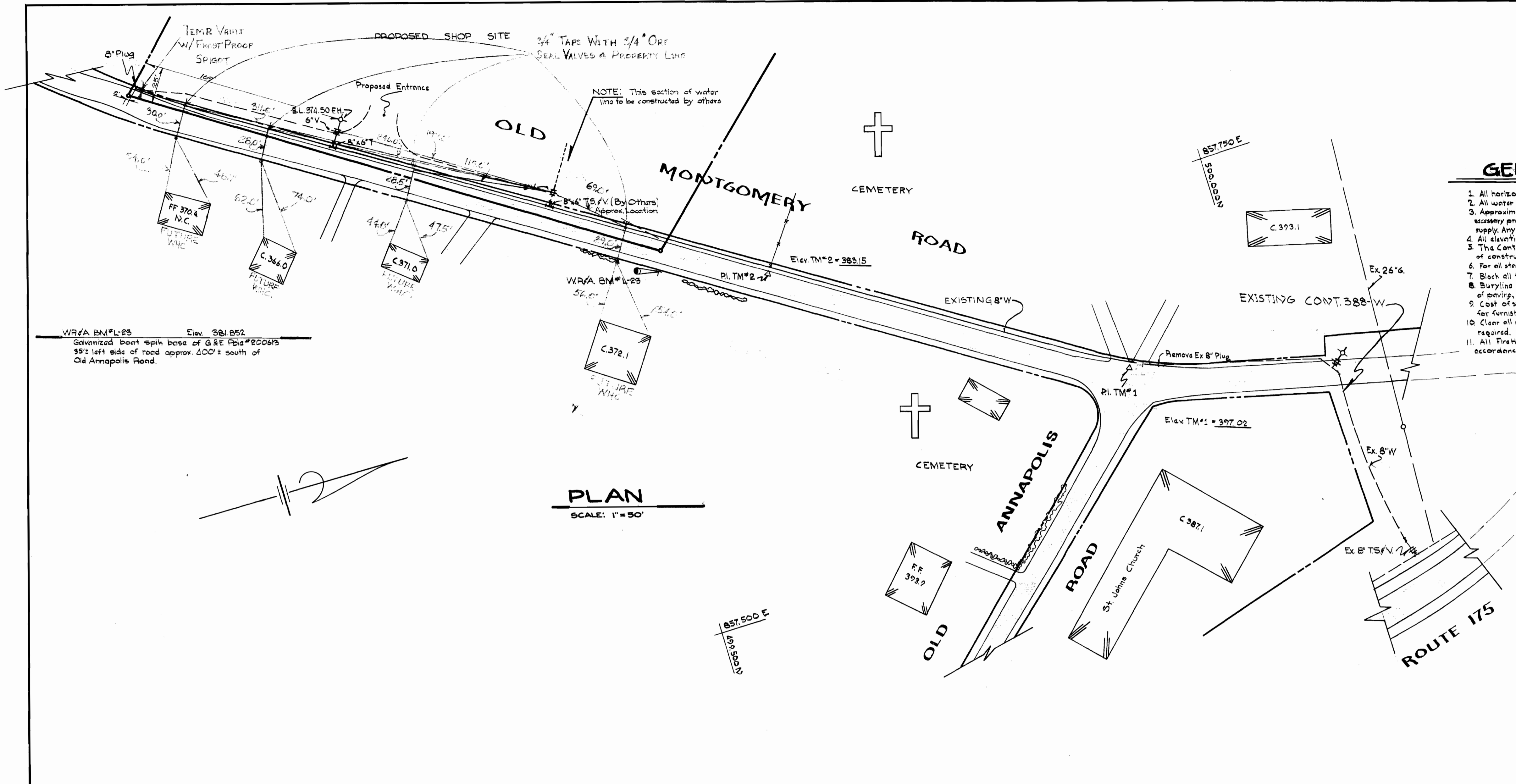
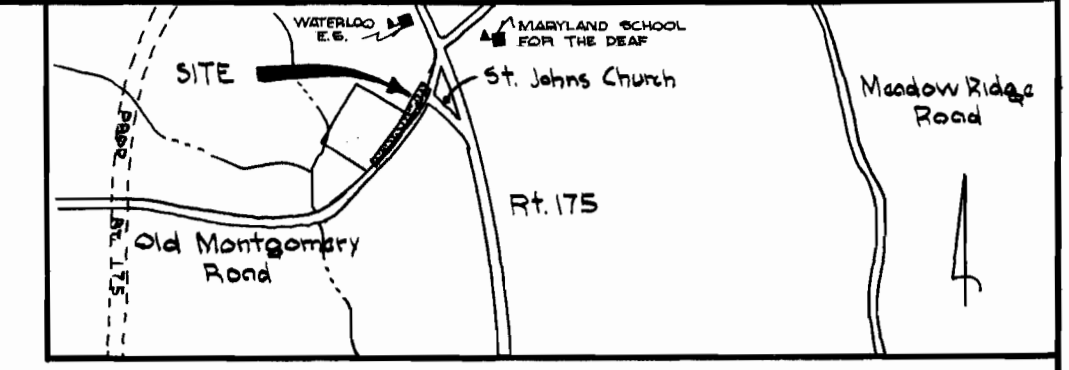


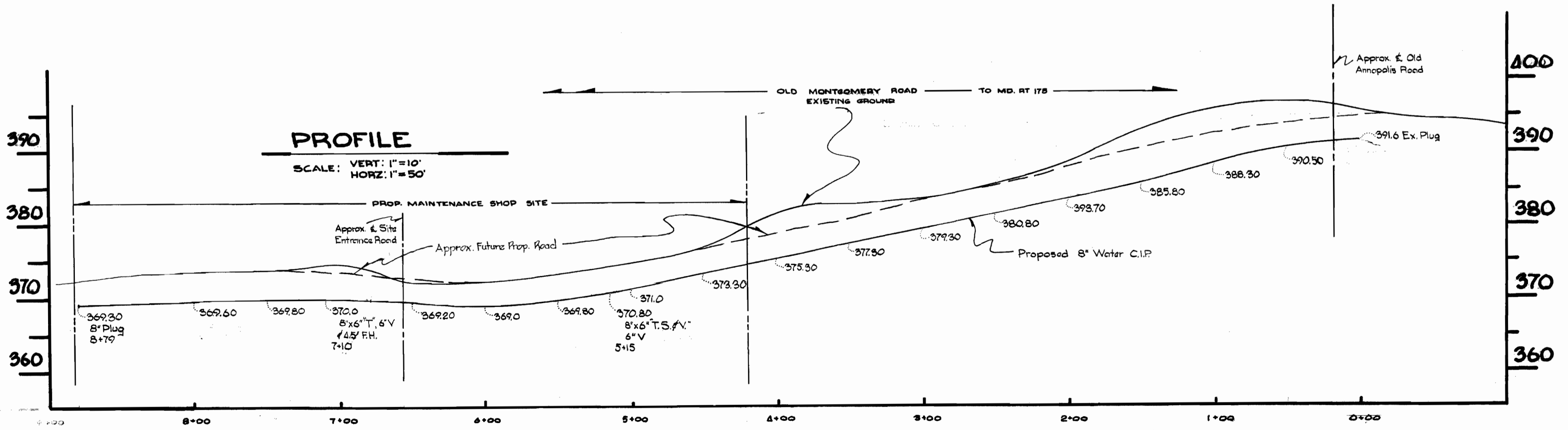
EUSPENEX

EUSPENEX



GENERAL NOTES

1. All horizontal and vertical controls are based on Maryland State Datum.
2. All water mains shall have a minimum of 3.5' cover.
3. Approximate location of existing mains are shown. The Contractors shall take all necessary precautions to protect existing mains and services and maintain uninterrupted supply. Any damage incurred shall be repaired immediately.
4. All elevations on pipe are marked (O) elevations.
5. The Contractor shall locate existing utilities a minimum of two weeks in advance of construction operations in vicinity of utilities.
6. For all standards details see standards bound in specifications.
7. Block all fittings with concrete, see standards bound in specifications.
8. Buryline elevations on Fire Hydrants shall be set the same as top of curb edge of paving, or as directed by the engineer in the field.
9. Cost of strapping Fire Hydrants and Valves to be included in the unit price bid for furnishing and installing Fire Hydrants.
10. Clear all utilities by minimum of 6' clear all poles by 2' minimum or tunnel as required.
11. All Fire Hydrants shall be strapped to trees and buttressed with concrete in accordance with standard details.



BUREAU OF ENGINEERING
INSPECTION AND SURVEY DIVISION

DEPARTMENT OF PUBLIC WORKS
HOWARD COUNTY, MARYLAND
DATE 6-20-74
W.D. Palbert
CHIEF-BUREAU OF WATER AND SEWER

CONTRACT NO. 588 MQ-W

PLAN AND PROFILE
OF WATER MAIN

GUILFORD ELECTION
DISTRICT NO. 6

DRAWING NO. 1 OF 1
SCALE AS SHOWN
APPROVED BY: J.D. HOPKINS
CHECKED: R. WILKINSON
DATE: 6/24/74

WS 588 W/I

EUSPENEX