

Espey

Espey

Kennedy

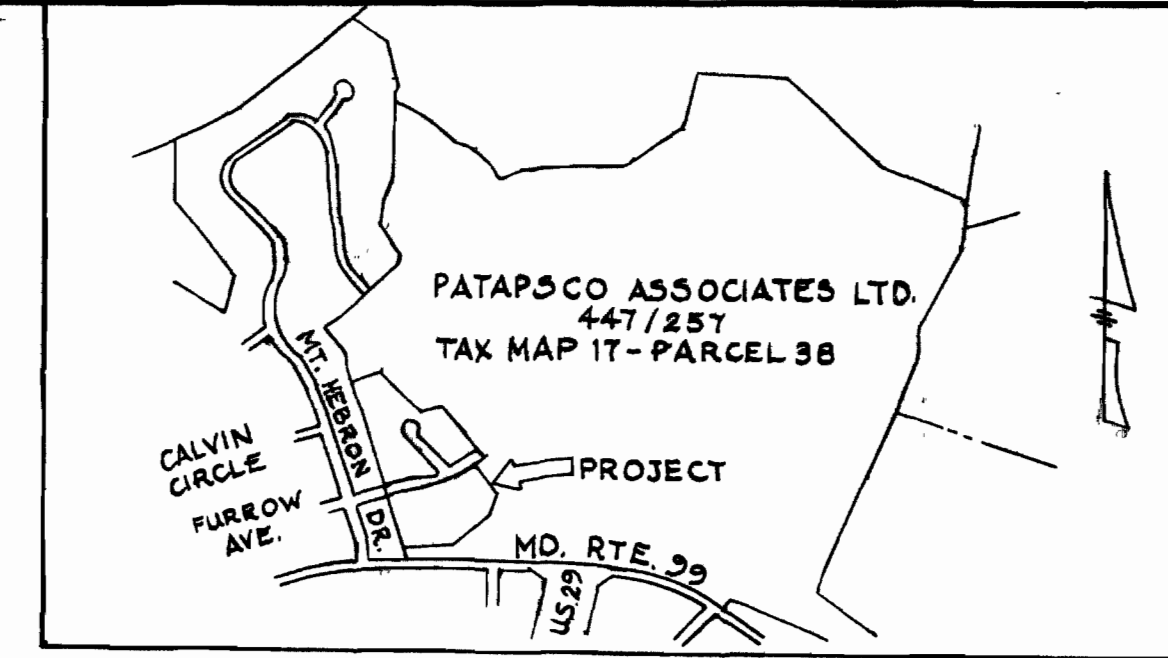
Property OF
PATAPSCO ASSOCIATES LIMITED
PARTNERSHIP
447/25T

Temporary Tee Turnaround
& Dead end Barricade

BENCH MARKS

B.M. 17 ELEV. 404.50
R.N. spike in GLE pole
25224.50' N of
P.I. - AT-16.

B.M. 18 ELEV. 491.94
R.N. spike in GLE pole
26297.94' N of
P.I. - AT-17.

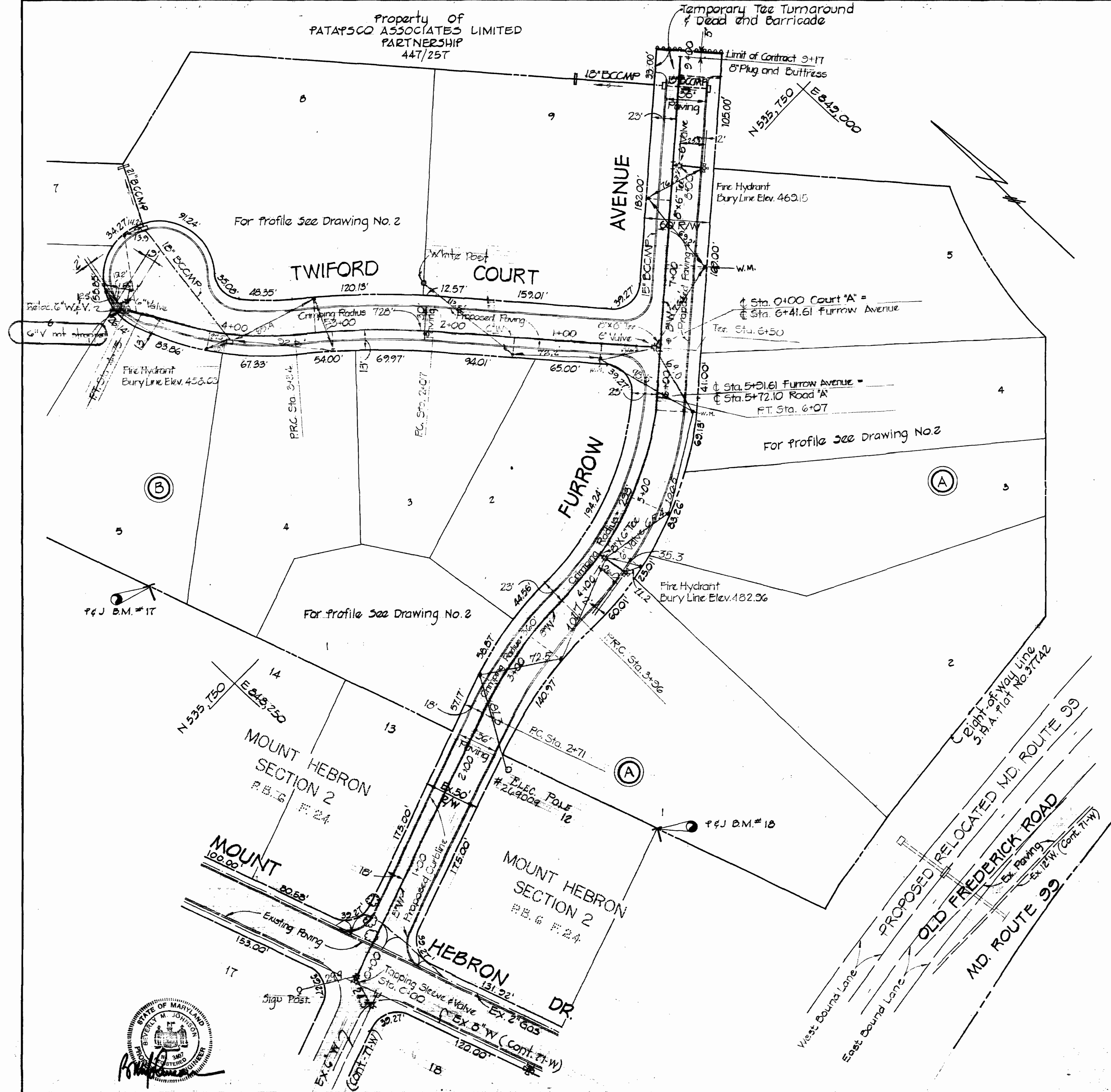


VICINITY MAP
SCALE: 1" = 1200'

JOHN MANVILLE = (J.M.)
TRANSITE PIPE = (A.C.P.)
RING TITE
CLASS 150
DIARY # 75

GENERAL NOTES

1. Approximate locations of existing utilities are shown. The contractor shall take all necessary precautions to protect the existing utilities and to maintain uninterrupted service. Any damage incurred due to contractor's operations shall be repaired immediately at the contractor's expense.
2. All pipe elevations shown are invert elevations.
3. The contractor shall locate existing utilities a minimum of two weeks in advance of construction operations in the vicinity of utilities.
4. See standard details bound in specifications.
5. Buttress or anchor all water main fittings with concrete.
6. Clear all utilities by a minimum of 6 inches; clear all utility poles by 2'-0" minimum or tunnel as required. Any costs incurred to the contractor for tunneling or bracing poles shall be included in unit prices bid for excavation.
7. All water mains to have a minimum of 3.5' cover unless otherwise noted.
8. All fire hydrants shall be strapped to the top and be buttressed with concrete in accordance with standard details. Cost of strapping fire hydrants and valves to be included in the unit price bid for furnishing and installing fire hydrants.
9. Bury line elevations on fire hydrants shall be set to the elevations shown on the Plan.
10. All horizontal and vertical controls are based on the Maryland State Grid System.



PURDUM & JESCHKE
ENGINEERS
1023 N. CALVERT ST.
BALTIMORE, MARYLAND

DEPARTMENT OF PUBLIC WORKS
HOWARD COUNTY, MARYLAND
DATE: 5-1-74
W.O. Fellert
CHIEF BUREAU OF ENGINEERING

CONTRACT NO. 501-D-W

QUANTITIES	
6" WATER	541 LF.
8" WATER	517 LF.
FIRE HYDRANTS	3

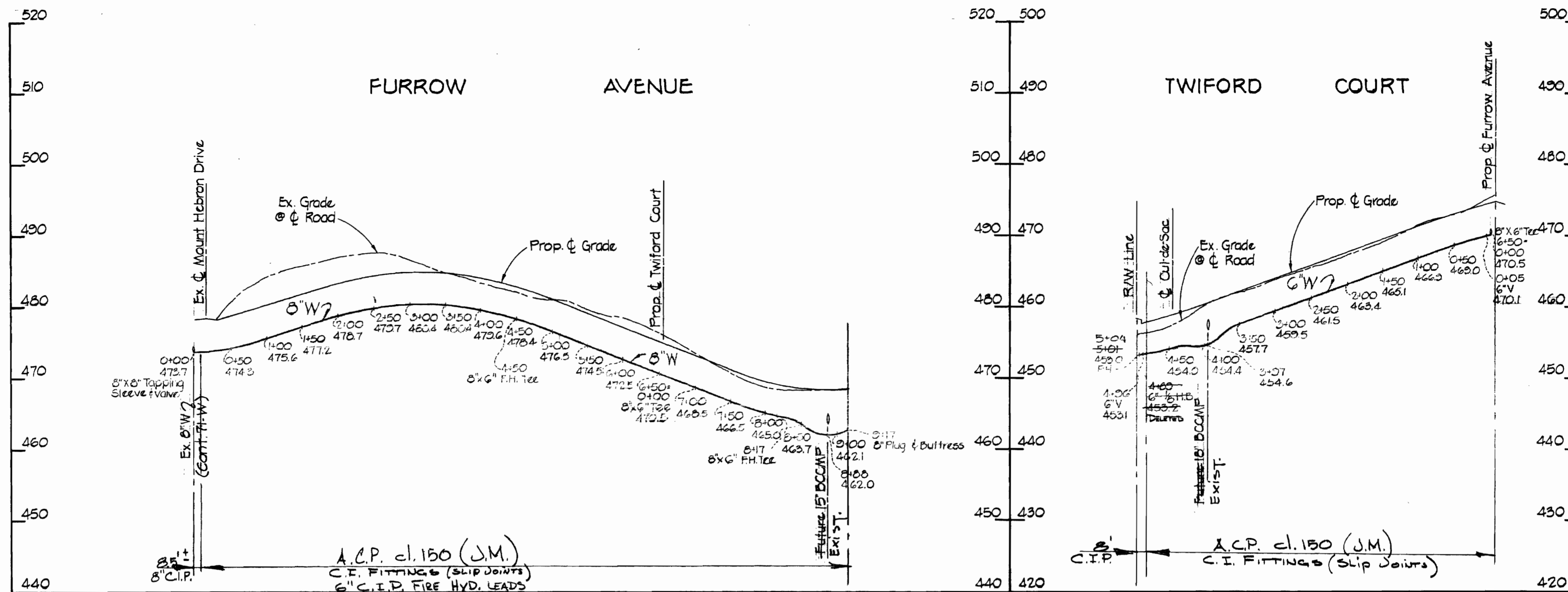
CONTRACT NO. 501-D-W
PROPOSED PARK ESTIMATES
UNDER RECONSTRUCTION

DRAWING SCALE
NO. 1
OF 2
1" = 30'

WATER & SEWER
ELECTION DISTRICT NO. 3
HOWARD COUNTY, MARYLAND

uspener

uspener



PROFILE
 Hor: 1" = 100'
 Vert: 1" = 10'



PURDUM & JESCHKE
 ENGINEERS
 1023 N. CALVERT ST.
 BALTIMORE, MARYLAND

DEPARTMENT OF PUBLIC WORKS
 HOWARD COUNTY, MARYLAND
 DATE 5-1-74
 W.D. Talbot
 CHIEF BUREAU OF ENGINEERING

CONTRACT NO. 506-D-W

PROFILES OF
 WATER MAINS

"PATRSCO PARK ESTATES"
 ELECTION DISTRICT NO. 2
 HOWARD COUNTY, MARYLAND

DRAWING NO. 2	SCALE AS SHOWN	DATE
OF 2		

CONTRACT NO. 506-D-W
 PATRSCO PARK ESTATES
 WATER MAIN EXTENSION

WS 586 W/2