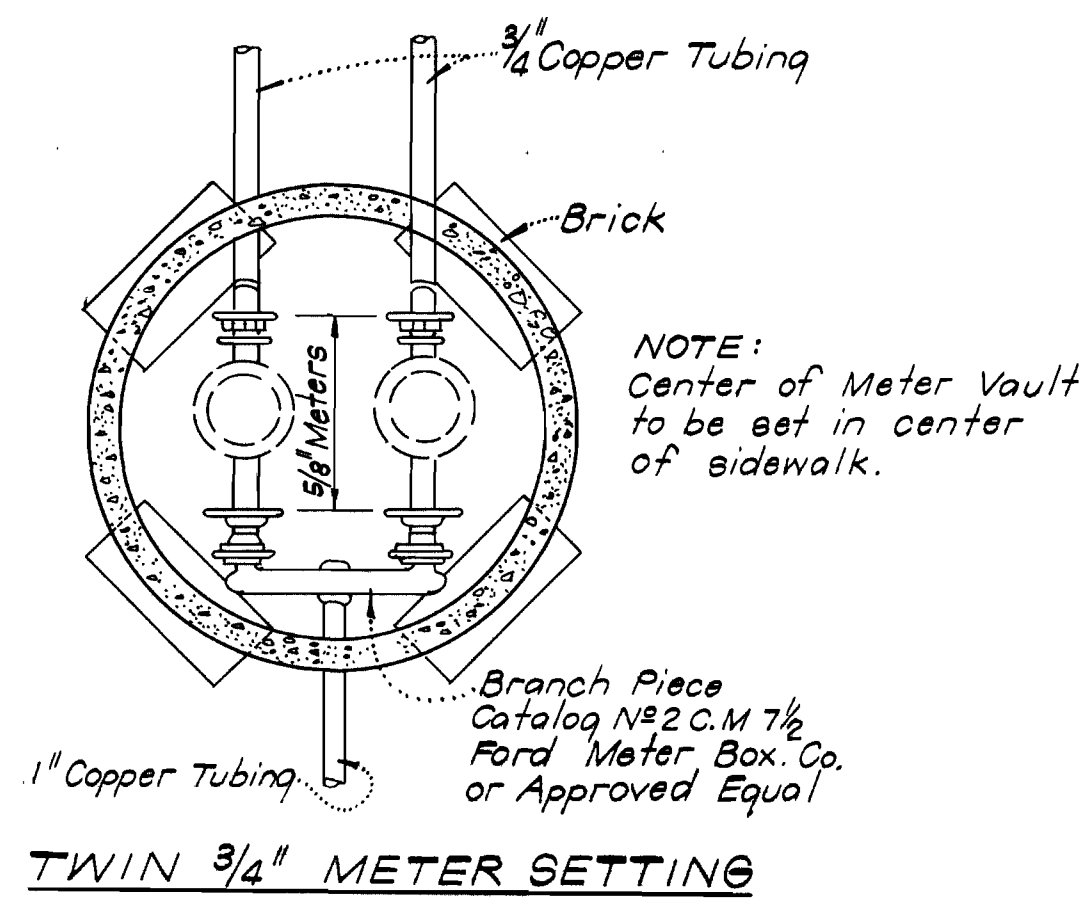


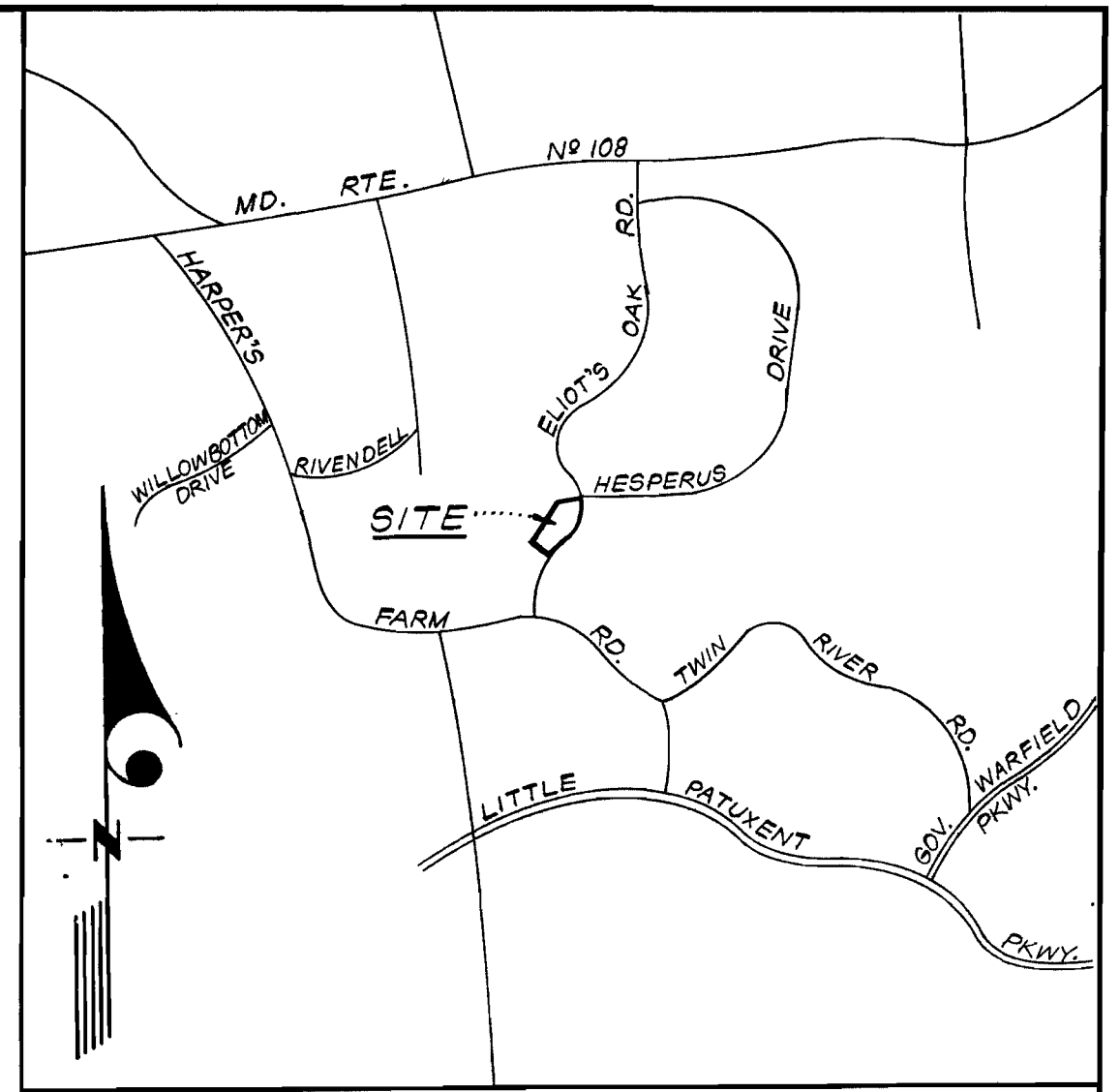
EXPANDED

EXPANDED

EXPANDED

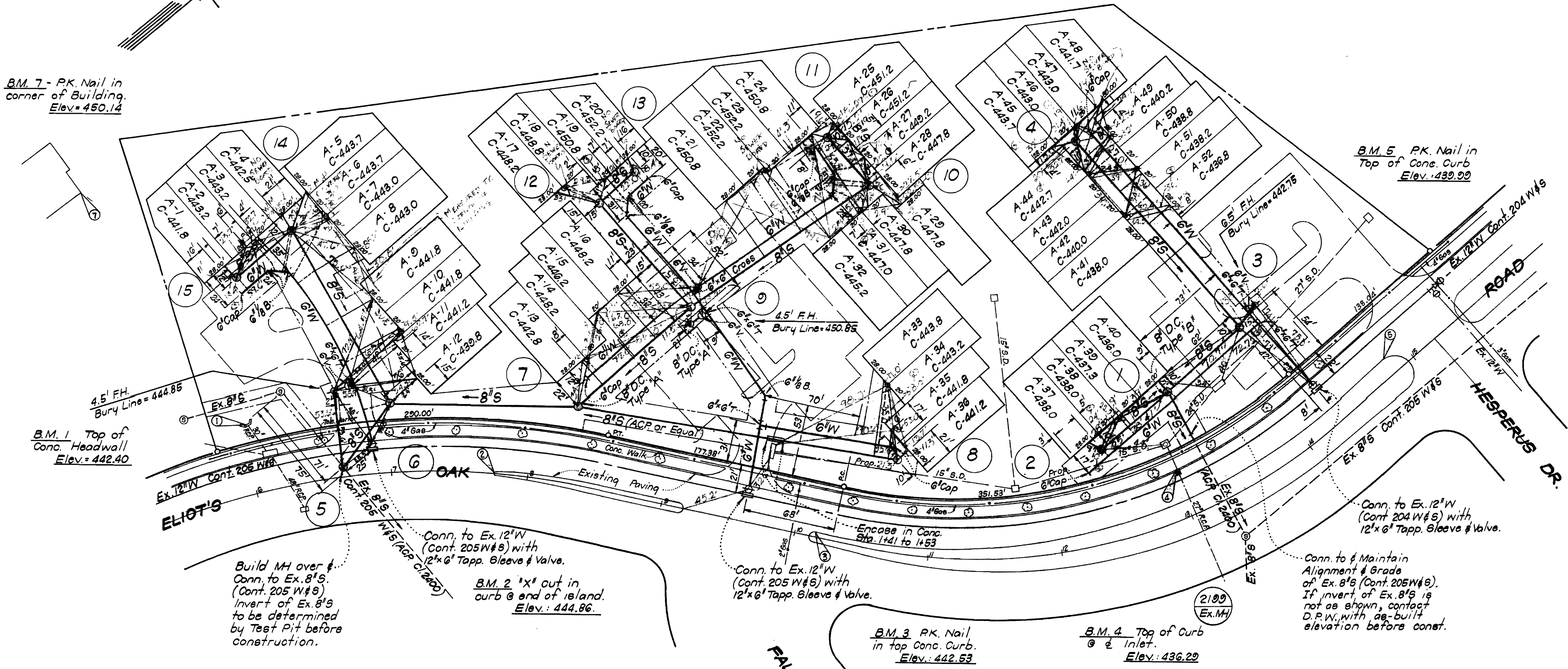


B.M. 6 - Corner of Conc. Headwall
Elev. 451.64



B.M. 7 - PK. Nail in corner of Building
Elev. 450.14

B.M. 5 - PK. Nail in Top of Conc. Curb
Elev. 439.99



GENERAL NOTES

1. Approximate location of existing utilities is shown. The Contractor shall take all necessary precautions to protect existing mains and services and maintain uninterrupted supply. Any damage incurred shall be repaired immediately.
2. All pipe elevations shown are invert elevations.
3. The Contractor shall locate existing utilities a minimum of two weeks before construction operations in vicinity of existing utilities.
4. For all standard details see standards bound in Specifications.
5. All Water Mains shall have a minimum of 3 1/2 ft. of cover.
6. Block all fittings with concrete. See standard details bound in specifications.
7. Bury Line elevations on Fire Hydrants shall be set to elevations shown on plan.
8. All Fire Hydrants shall be strapped to tee and buttressed with concrete in accordance with standard detail W-4.
9. Clear all utilities by a minimum of 6". Clear all poles by a minimum of 2'-0" or tunnel as req'd.
10. The Contractor shall provide a joint in all sewer mains within 2'-0" of exterior manhole walls.
11. S.H.C.'s shall be 6".
12. All manholes shall be 4'-0" inside diameter.
13. All horizontal and vertical controls are based on Maryland State Datum.
All Fire Hydrants shall be set 2'-0" behind the face of Proposed curb.

Build MH over & Conn. to Ex. 8" S. (Cont. 205 W#s) Invert of Ex. 8" S to be determined by Test Pit before construction.

B.M. 2 'x1' out in curb @ end of island
Elev. 444.86

Conn. to Ex. 12" W (Cont. 205 W#s) with 12" x 6" Tapp. Sleeve & Valve.

B.M. 3 PK. Nail in top Conc. Curb
Elev. 442.53

B.M. 4 Top of Curb @ Inlet
Elev. 436.29

Conn. to & Maintain Alignment & Grade of Ex. 8" S (Cont. 205 W#s). If invert of Ex. 8" S is not as shown, contact D.P.W. with as-built elevation before const.

TWIN WATER HOUSE CONNECTIONS	
LOTS 2 & 3	
LOTS 6 & 7	
LOTS 10 & 11	
LOTS 13 & 14	
LOTS 17 & 18	
LOTS 22 & 23	
LOTS 30 & 31	
LOTS 33 & 34	
LOTS 38 & 39	
LOTS 41 & 42	
LOTS 43 & 44	
LOTS 46 & 47	
LOTS 50 & 51	
TOTAL 137 Twin W.H.C.'s	

ITEM	QUANTITY
8" Sewer	1440 LF
6" Water	1295 LF

COLUMBIA VILLAGE OF HARPER'S CHOICE SECTION 5 AREA 1 RESUBDIVISION OF PARCEL 'A' LOTS A-1 THRU A-53 CONTRACT 2585 D W#S

Vernon P. Finkech
12/27/73

CLARK • FINEFROCK & SACKETT
ENGINEERS • PLANNERS • SURVEYORS
11515 LOGWOOD DRIVE SILVER SPRING, MARYLAND 20904

DEPARTMENT OF PUBLIC WORKS
HOWARD COUNTY, MARYLAND
2-73-74 DATE
W.D. Gilbert
CHIEF-BUREAU OF WATER AND SEWER

CONTRACT NO. 2585D-W#S

PLAN OF WATER & SEWER MAINS

COLUMBIA VILLAGE OF HARPER'S CHOICE ELECTION DISTRICT-CLARKSVILLE No.5

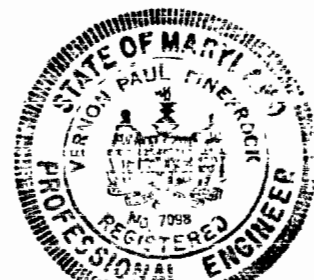
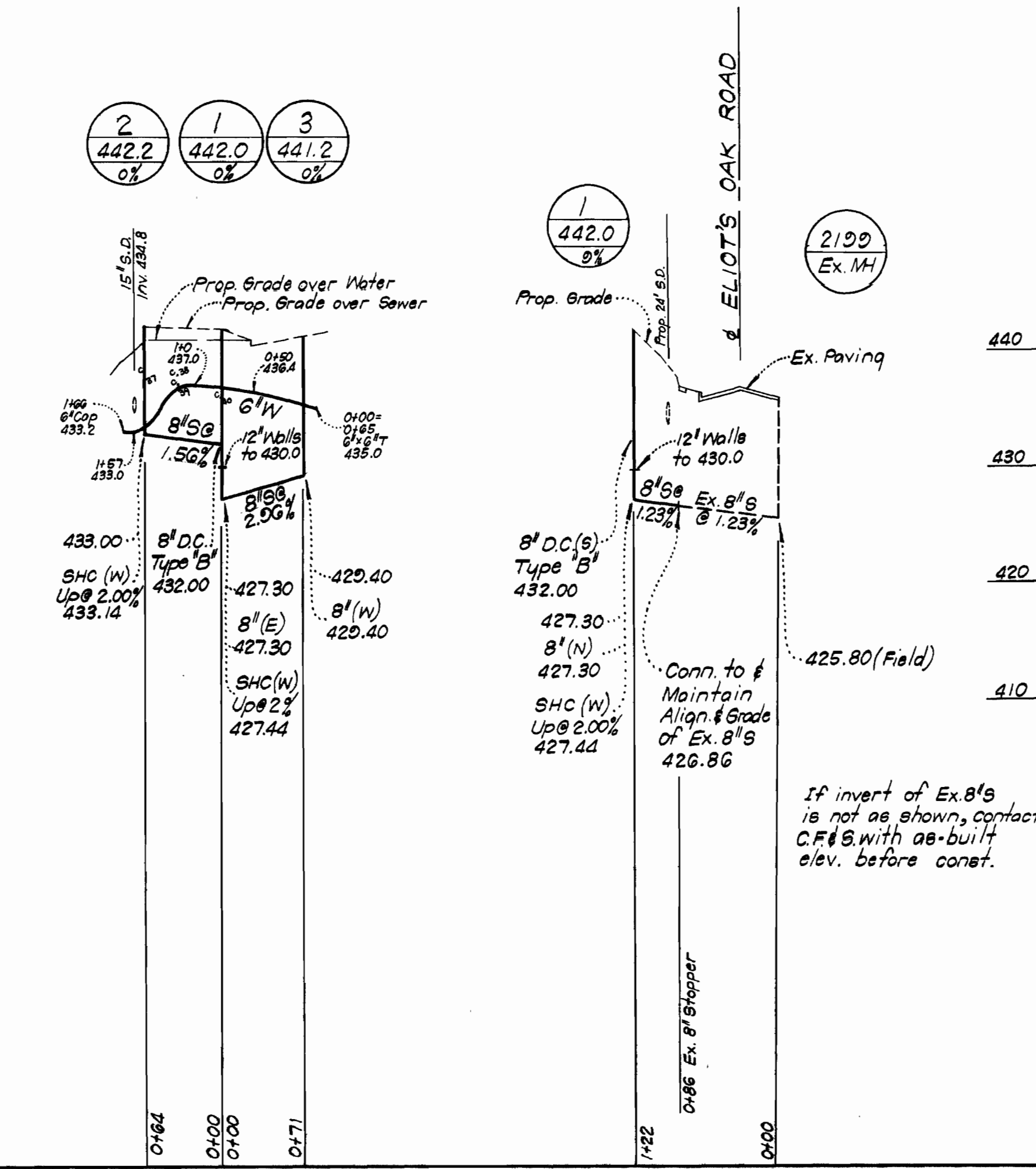
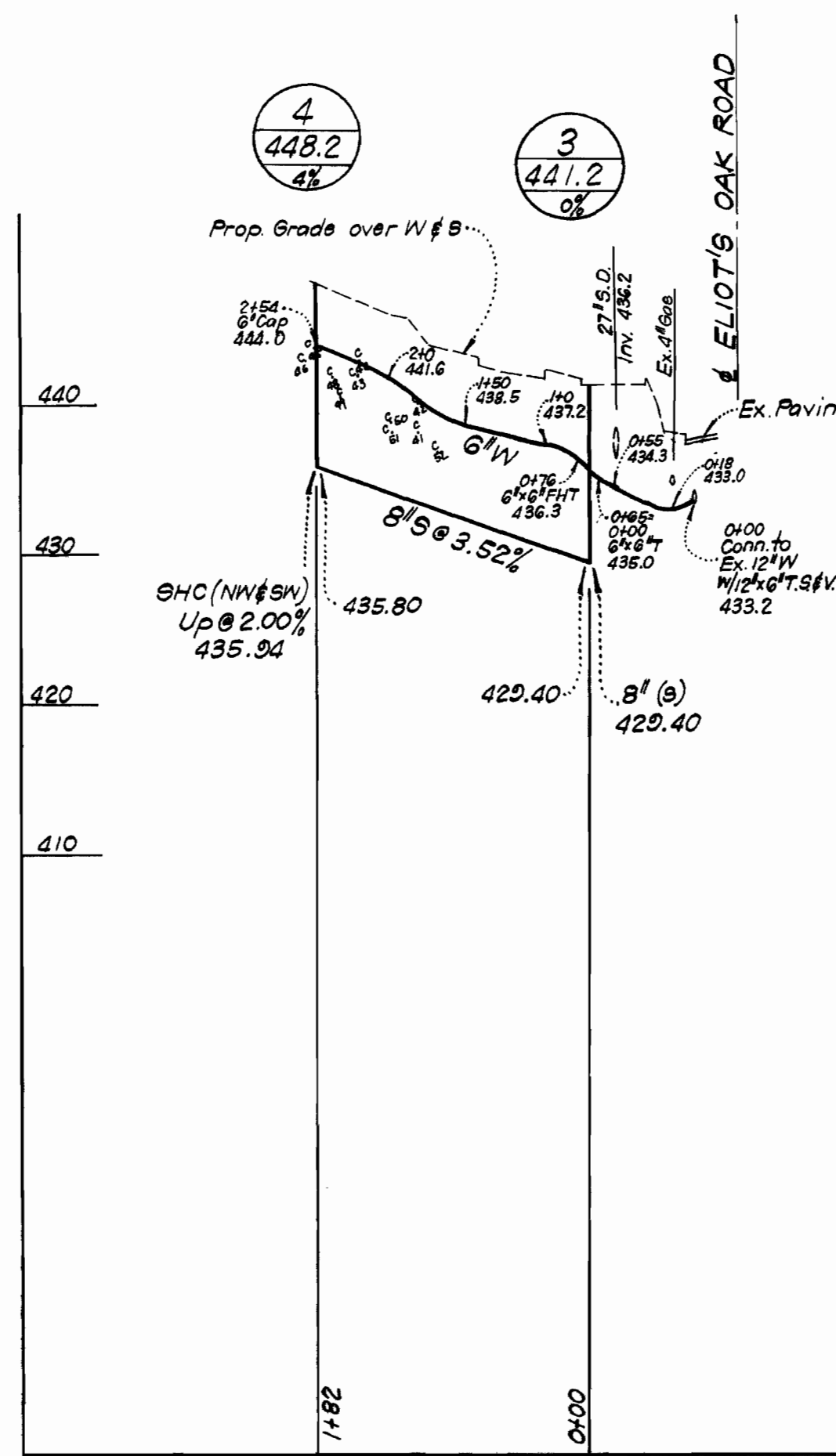
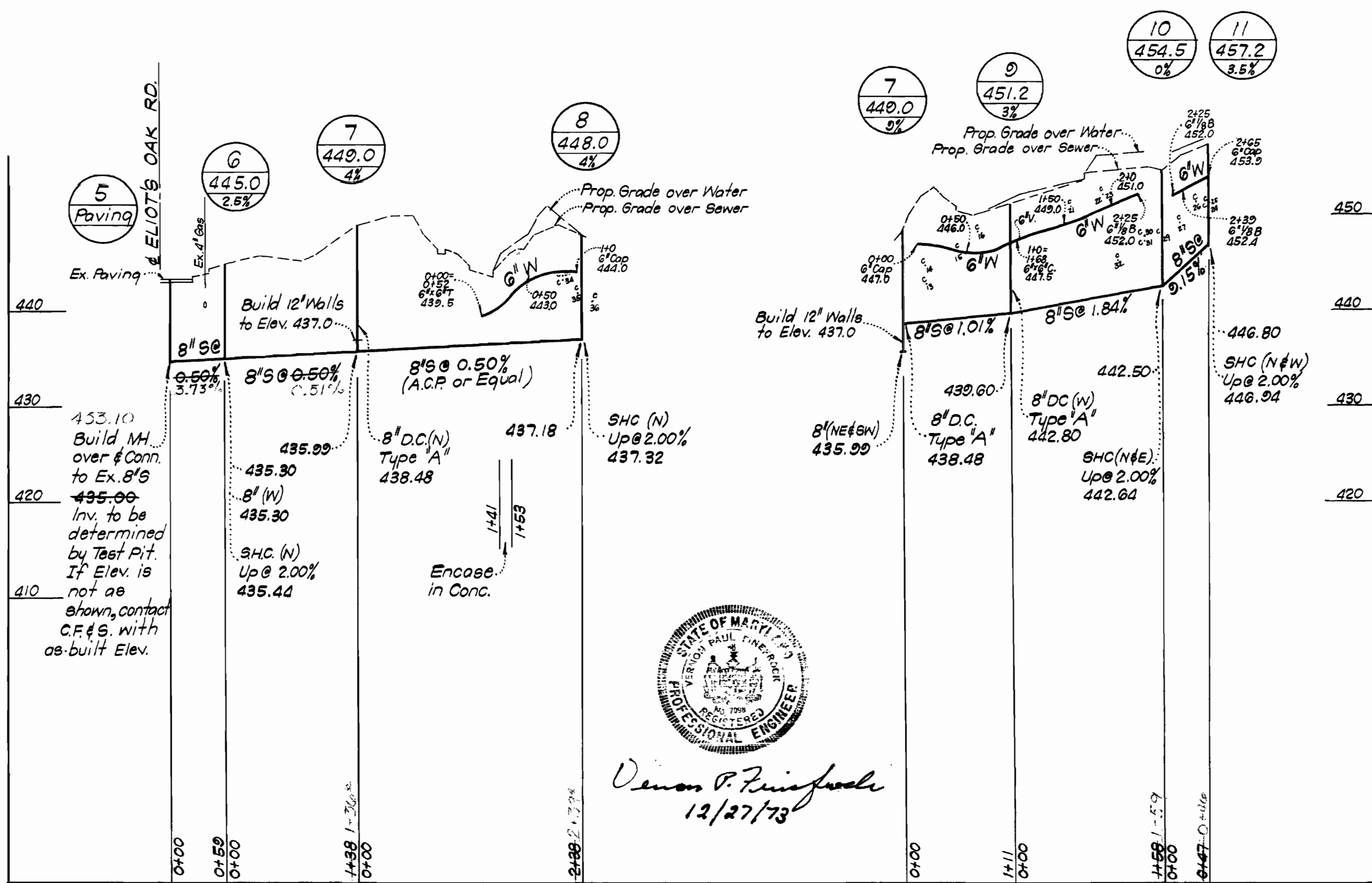
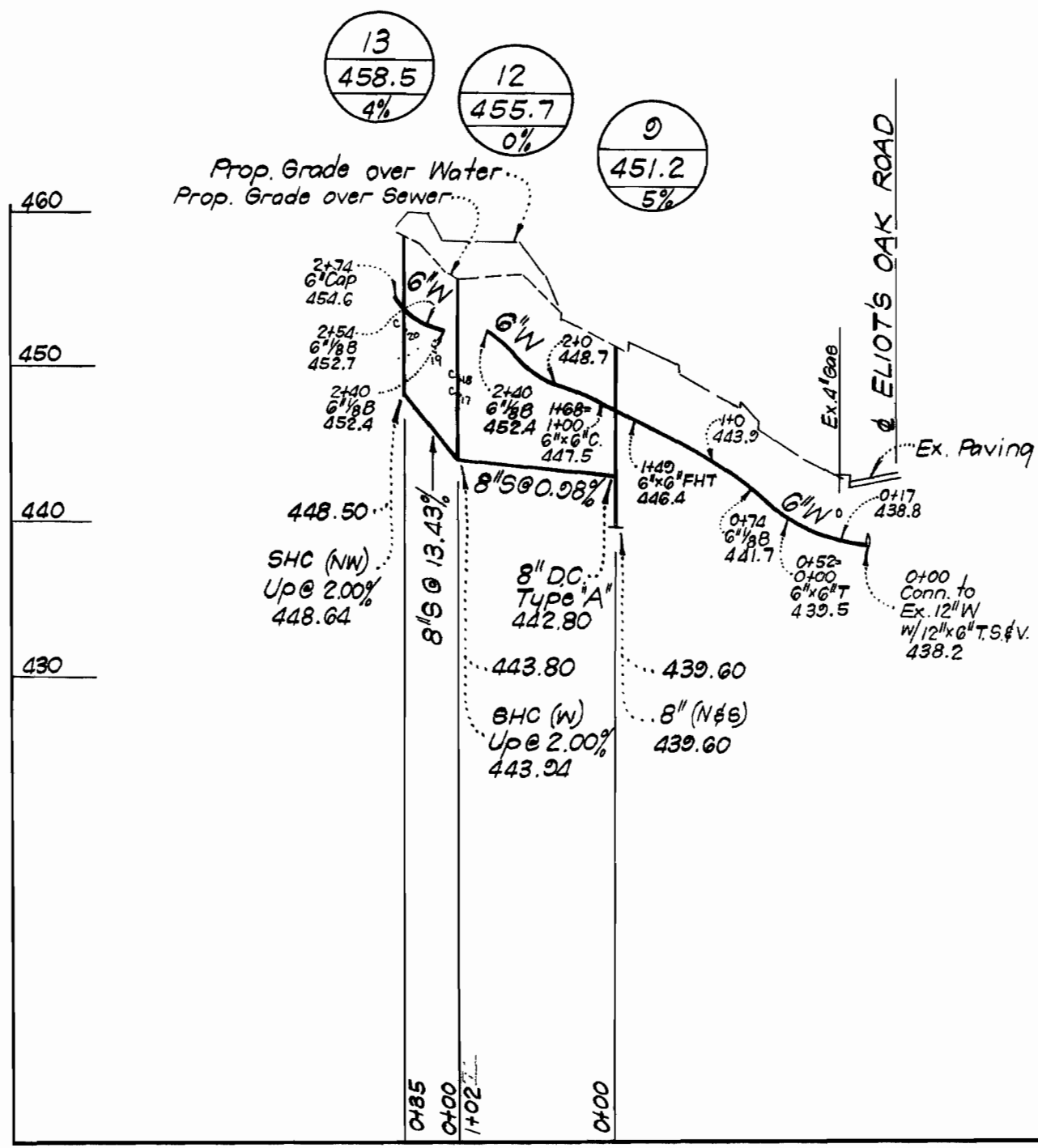
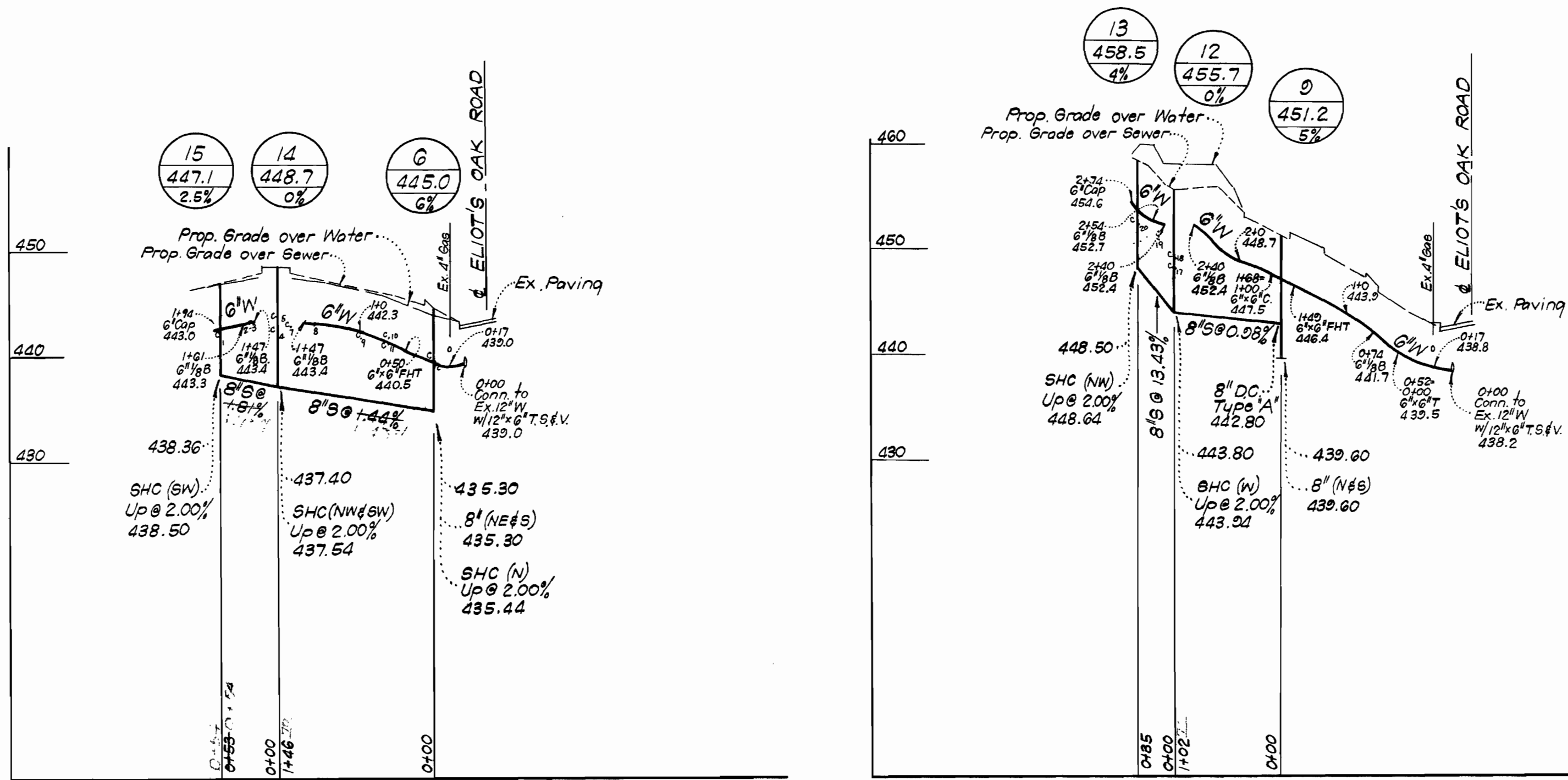
DRAWING NO. 1 OF 2 SCALE 1" = 50'

WS 585. W#S/1

WS 585-W&S/2

suspension

suspension



Paul Finefrock
12/27/73

CFE CLARK • FINEFROCK & SACKETT
ENGINEERS • PLANNERS • SURVEYORS
11315 LOCKWOOD DRIVE SILVER SPRING, MARYLAND 20904

DEPARTMENT OF PUBLIC WORKS
HOWARD COUNTY, MARYLAND
2-28-74
DATE

CONTRACT NO. 585D-W&S
W. O. F. Albert
CHIEF-BUREAU OF WATER AND SEWER

PROFILES OF
WATER & SEWER MAINS

COLUMBIA
VILLAGE OF HARPER'S CHOICE
ELECTION DISTRICT-CLARKSVILLE No.5

DRAWING NO. 2 OF 2
SCALE HOR. 1"=100' VER. 1"=10'

AS BUILT Nov. 6, 1974