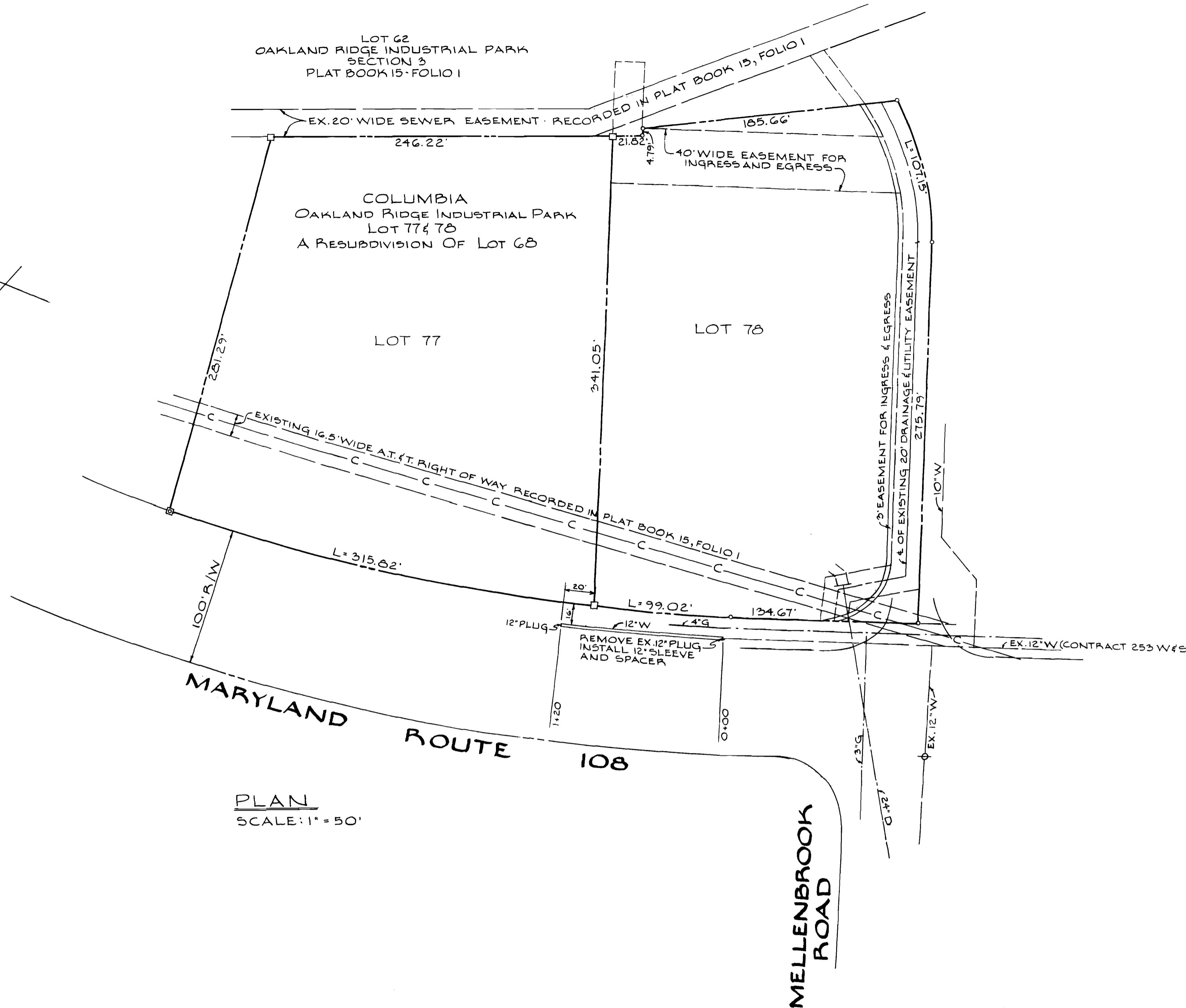
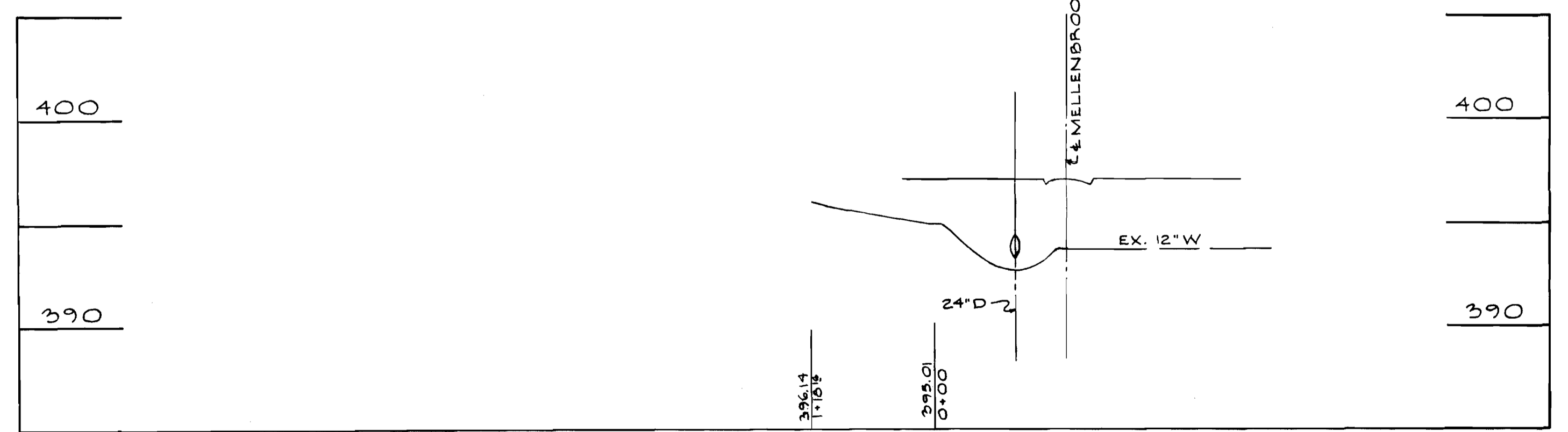


VICINITY MAP
SCALE: 1" = 1200'



PLAN
SCALE: 1" = 50'



PROFILE
HOR.: 1" = 100'
VERT.: 1" = 5'

GENERAL NOTES

1. Approximate location of existing mains are shown. The Contractor shall take all necessary precautions to protect the existing mains and services and maintain uninterrupted supply. Any damage incurred shall be repaired immediately.
2. All pipe elevations shown are invert elevations.
3. The contractor shall locate existing utilities a minimum of two weeks in advance of construction operations in vicinity of utilities.
4. For all Standard Details see Standards Bound in Specifications.
5. All water mains to be C.I.P. C.I. 250, A.C.P. C.I. 150 Type 2 or D.I.P. C.I. 250 and have a minimum of 3 1/2' cover.
6. Block all fittings with concrete, see Standard Details Bound in Specifications.
7. All Horizontal Controls are based on Maryland State Datum.
8. All Vertical Controls are based on Howard County Datum.

BUREAU OF ENGINEERING INSPECTION & SURVEY DIVISION	DEPARTMENT OF PUBLIC WORKS HOWARD COUNTY, MARYLAND	CONTRACT NO. 582 W & S	PLAN & PROFILE	ELECTION DISTRICT NO. 2	DRAWING NO. 1	SCALE AS SHOWN
	8-6-75 DATE				W. O. Hart CHIEF-BUREAU OF	OF 1

SUSPENSE

SUSPENSE

WS 582 W & S /