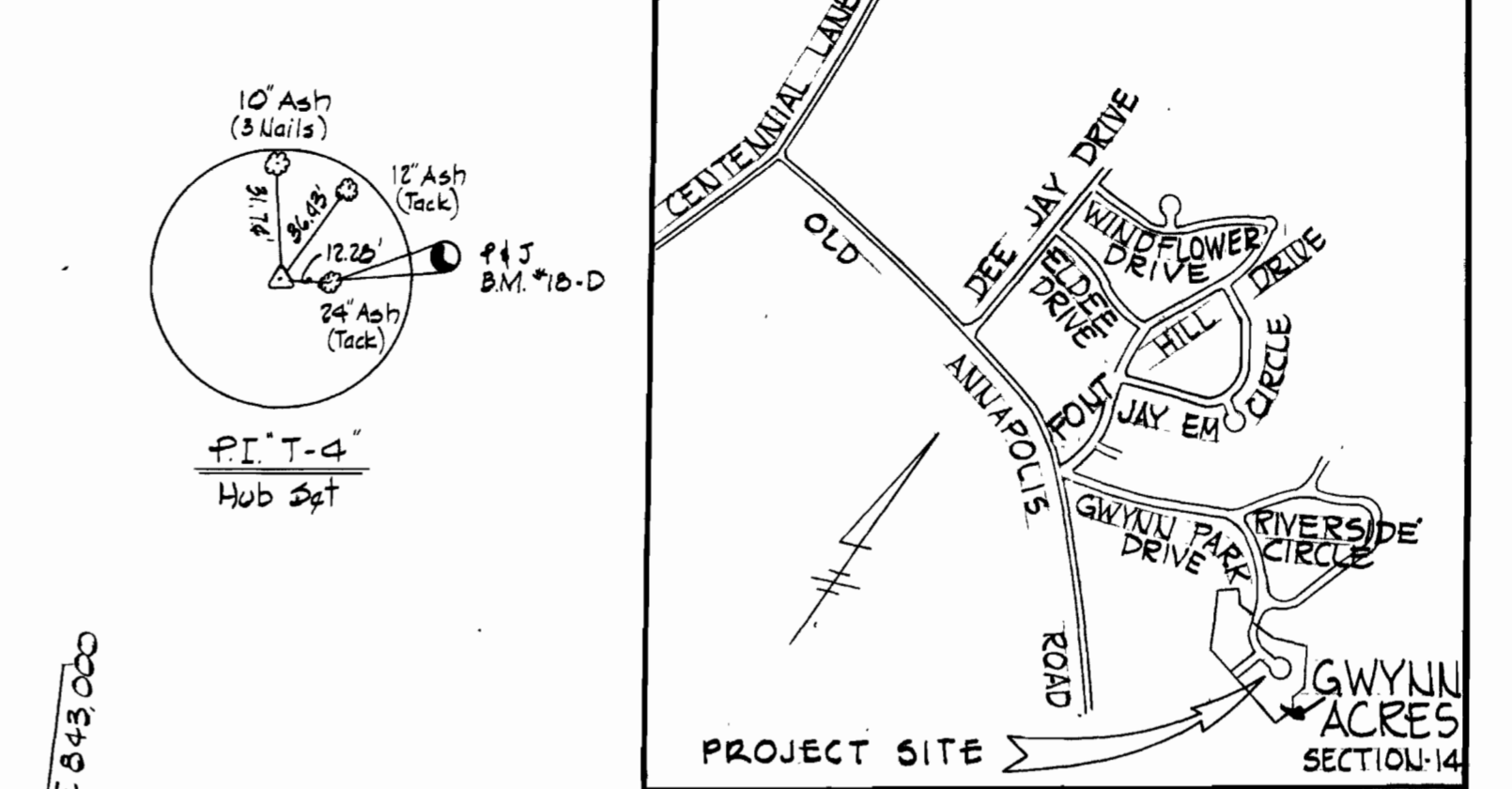
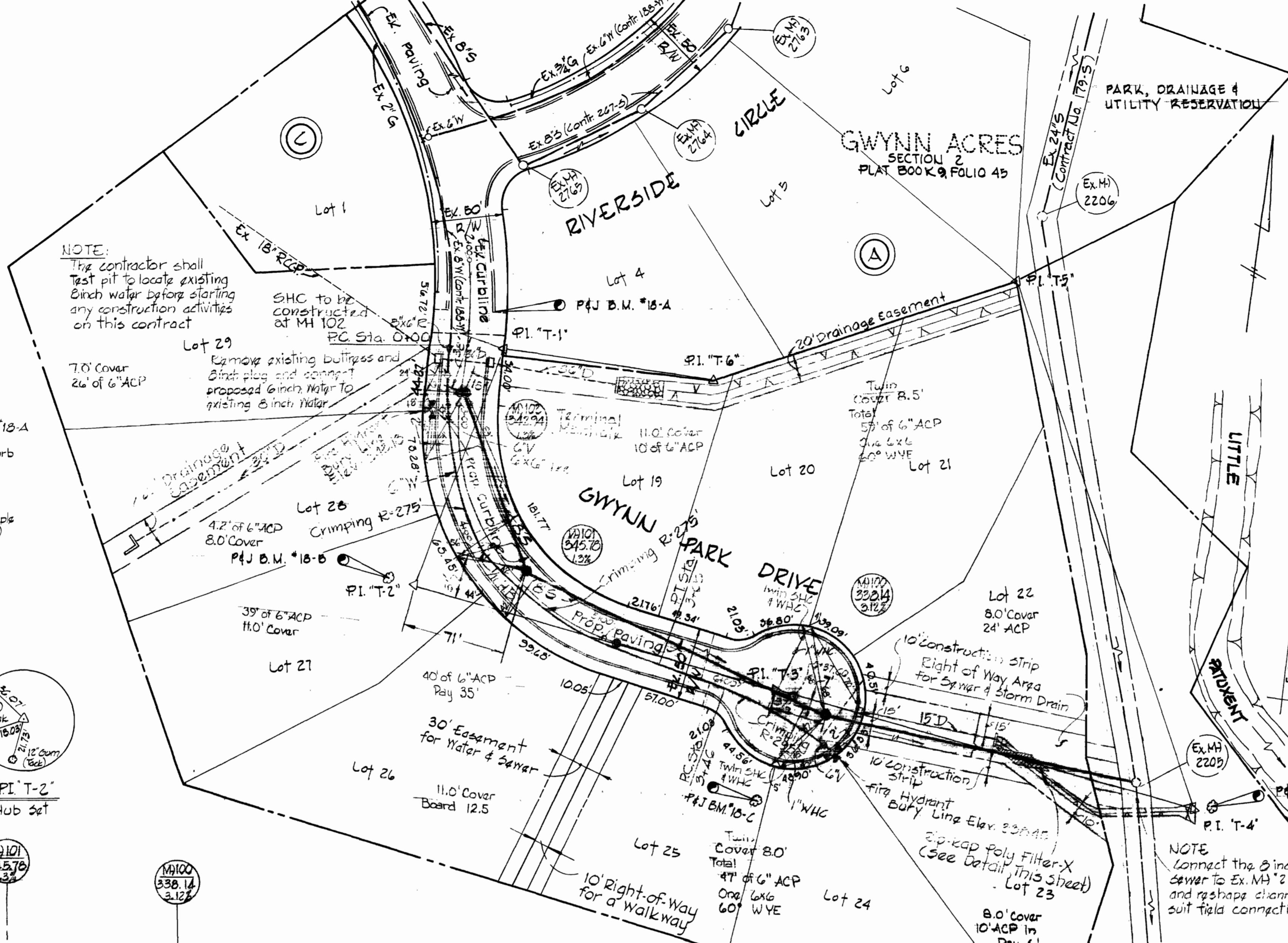


Suspense

**BENCH MARKS**

P & J B.M. #18-A	Elev. 343.53
P.K. nail in top of curb, 30'± North of P.I. "T-1"	
P & J B.M. #18-B	Elev. 354.33
R.R. spike in 18" Oak, 18'± West of P.I. "T-2"	
P & J B.M. #18-C	Elev. 339.96
R.R. spike in 18" Poplar, 78'± South of P.I. "T-3"	
P & J B.M. #18-D	Elev. 324.39
R.R. spike in 24" Ash, 13'± East of P.I. "T-4"	

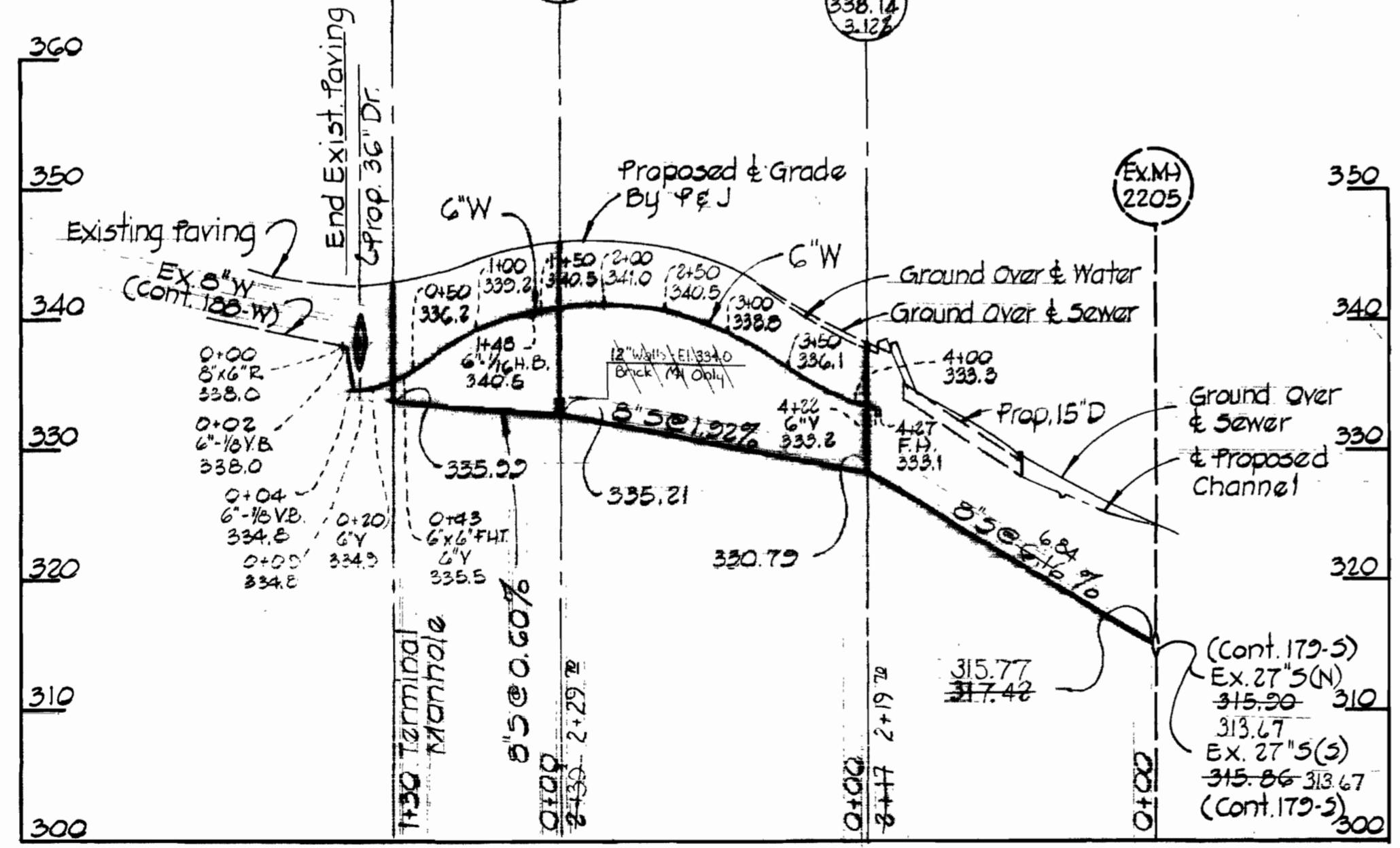


**VICINITY MAP**  
SCALE: 1"=1200'

**GENERAL NOTES**

1. Approximate locations of existing utilities are shown. The contractor shall take all necessary precautions to protect the existing utilities and to maintain uninterrupted service. Any damage incurred due to contractor's operations shall be repaired immediately at the contractor's expense.
2. All pipe elevations shown are invert elevations.
3. The contractor shall locate existing utilities a minimum of two weeks in advance of construction operations in the vicinity of utilities.
4. See standard details bound in specifications.
5. Buttress or anchor all water main fittings with concrete.
6. Clear all utilities by a minimum of 6 inches, clear all utility poles by 2'-0" minimum or tunnel as required. Any costs incurred to the contractor for tunneling or bracing poles shall be included in unit prices bid for excavation.
7. The contractor shall provide a pipe joint in all sewer mains within 2'-0" of exterior manholes walls.
8. All manholes shall be 4'-0" inside diameter.
9. All water mains to have a minimum of 3.5' cover unless otherwise noted.
10. All fire hydrants shall be strapped to the tee and shall be buttressed with concrete in accordance with standard details. Cost of strapping fire hydrants and valves to be included in the unit price bid for furnishing and installing fire hydrants.
11. Bury line elevations on fire hydrants shall be set to the elevations shown on the plan.
12. All horizontal and vertical controls are based on the Maryland State Grid System.

Property of  
**THE DEVELOPMENT & INVESTMENT CORPORATION OF MARYLAND**  
588/631

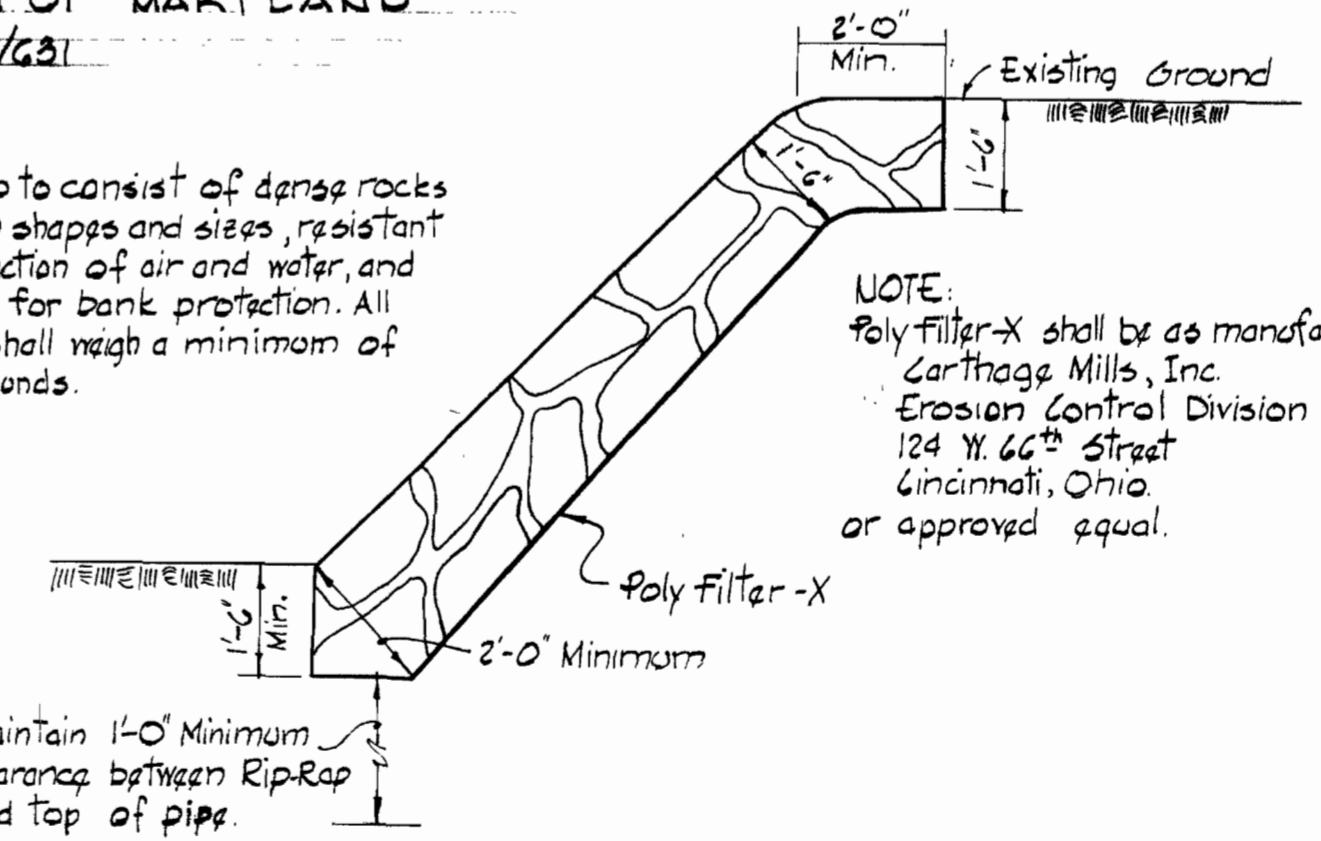


**PROFILE**  
Scale: Horiz. 1"=100'  
Vert. 1"=10'

**PLAN**  
Scale: 1"=80'

QUANTITIES	
8" SEWER	580 L.F.
6" WATER	430 L.F.
FIRE HYDRANTS	2 EQ.

Rip-Rap to consist of dense rocks random shapes and sizes, resistant to the action of air and water, and suitable for bank protection. All rocks shall weigh a minimum of 150 pounds.



**RIP-RAP DETAIL**  
SCALE: 3/8"=1'-0"

Professional Engineer  
**Deputy Johnson**

As-Built July 10, 1974

**PURDUM & JESCHKE**  
ENGINEERS  
1023 N. CALVERT ST.  
BALTIMORE, MARYLAND

**DEPARTMENT OF PUBLIC WORKS**  
HOWARD COUNTY, MARYLAND  
12-9-73  
DATE

CONTRACT NO. 1577-D-W & S

**PLAN AND PROFILE**  
WATER AND SEWER MAINS

**Gwynn Acres Section 14**  
SECOND ELECTION DISTRICT HOWARD COUNTY, MARYLAND

<b>DRAWING</b>	<b>SCALE</b>	<b>DESIGNED</b>
NO. 1	AS SHOWN	
OF 3		

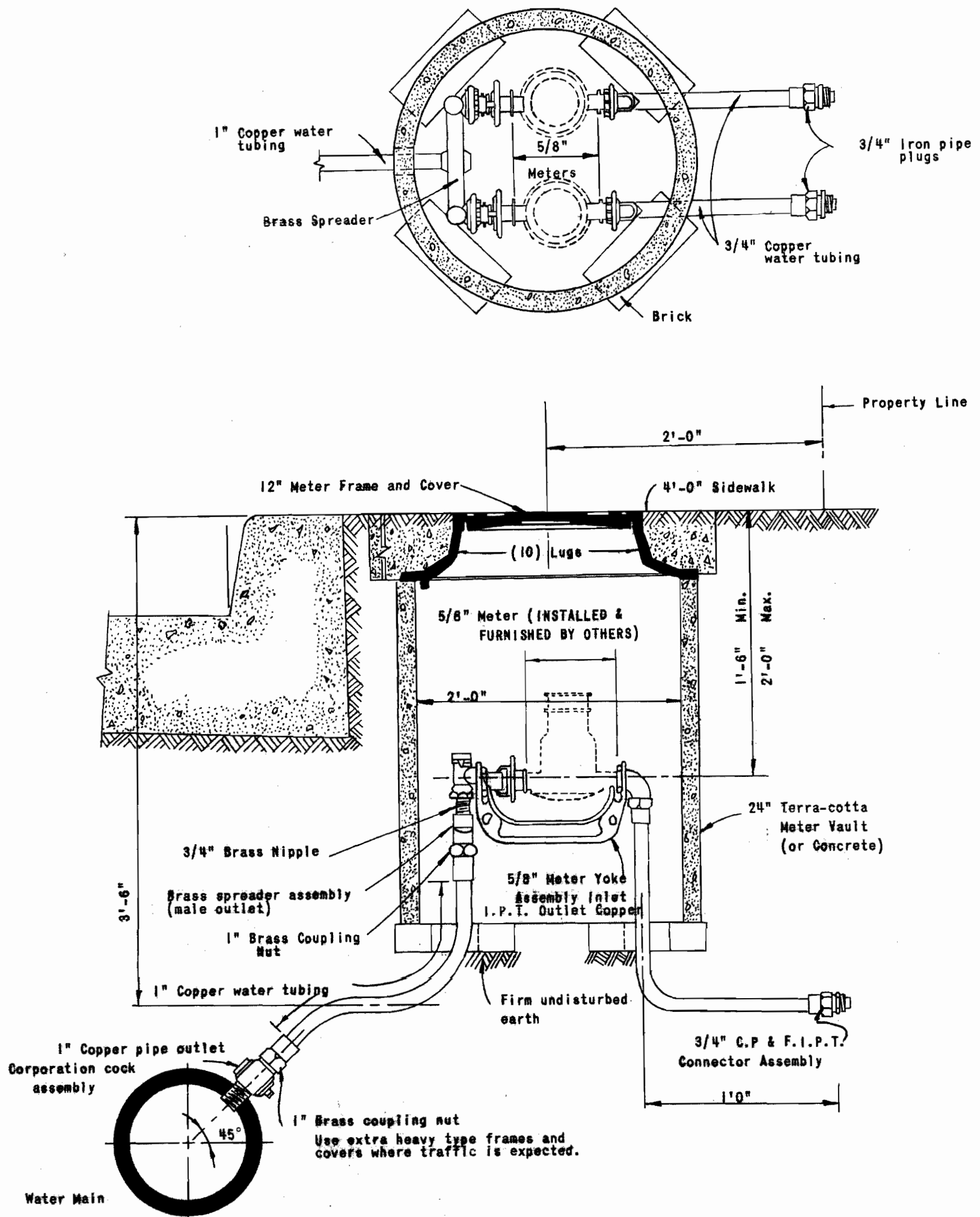
DECEMBER 11, 1973

Suspense

Suspense

ESSEX

ESSEX

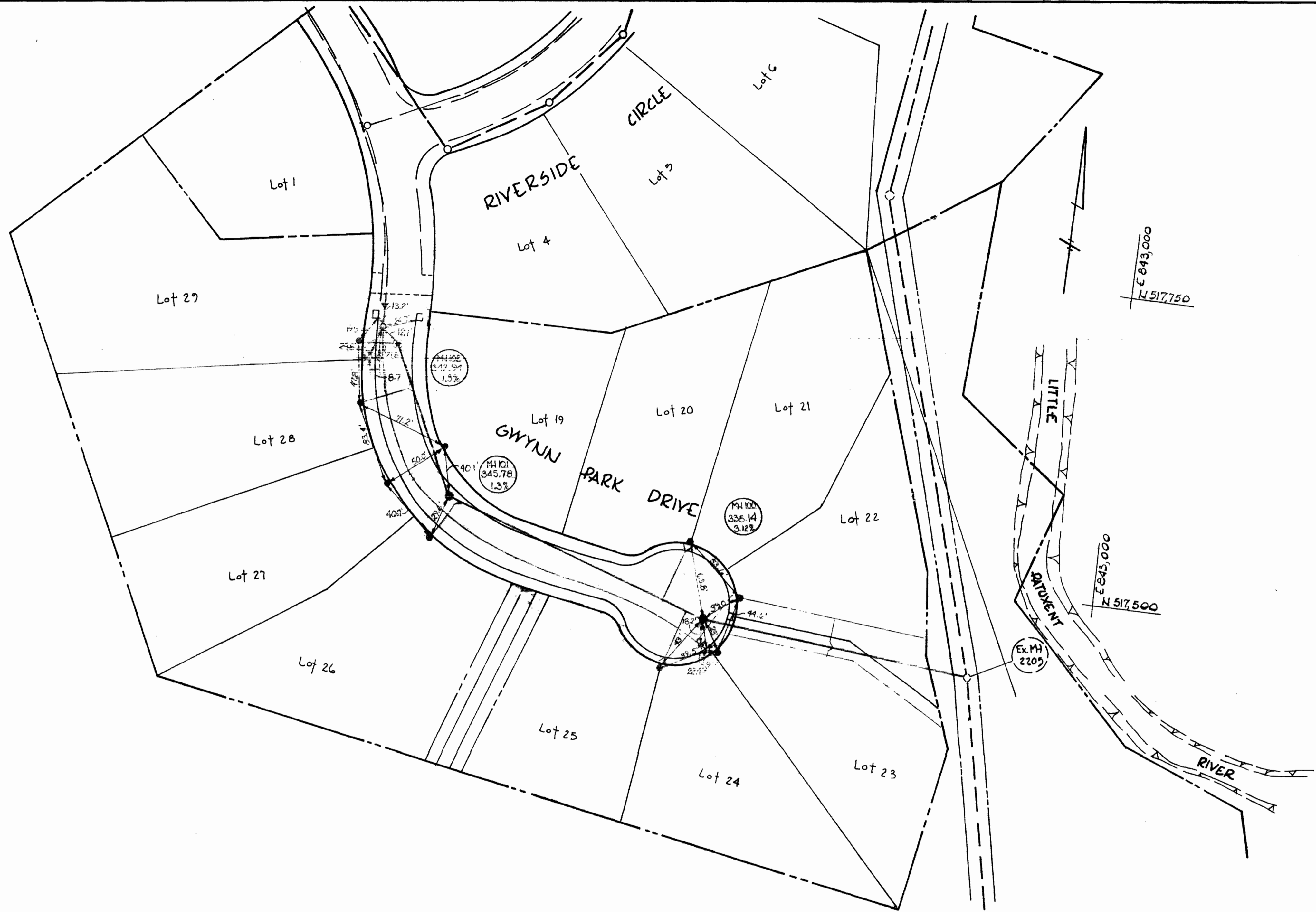


**3/4" METERED DOMESTIC SERVICE  
TWIN WATER HOUSE CONNECTION**  
NO SCALE

CONTRACT NO. 2577-D-W & S  
GWYNN ACRES - SECTION 14  
WATER AND SEWER EXTENSIONS

PURDUM & JESCHKE ENGINEERS 1023 N. CALVERT ST. BALTIMORE, MARYLAND	DEPARTMENT OF PUBLIC WORKS HOWARD COUNTY, MARYLAND DATE: 12-19-73 W. O. Falbert CHIEF BUREAU OF ENGINEERING	CONTRACT NO. 2577-D-W & S	DETAILS	GWYNN ACRES SECTION 14 SECOND ELECTION DISTRICT HOWARD COUNTY, MARYLAND	DRAWING NO. 2 OF 3 SCALE AS SHOWN
---	---	---------------------------	---------	---	---

N 517,500  
E 842,000



E 843,000  
N 517,750

E 845,000  
N 517,500

Ex. MH  
220.0'

BUREAU OF ENGINEERING  
INSPECTION & SURVEY DIVISION

DEPARTMENT OF PUBLIC WORKS  
HOWARD COUNTY, MARYLAND  
DATE \_\_\_\_\_ CHIEF-BUREAU OF WATER AND SEWER

CONTRACT NO. 577-D-WIS

AS-BUILT  
WATER MAINS

GWYNN ACRES SECTION 14  
SECOND ELECTION DISTRICT HOWARD COUNTY, MD.

DRAWING  
NO. 3  
OF 3

SCALE

WS 577. W4S/3