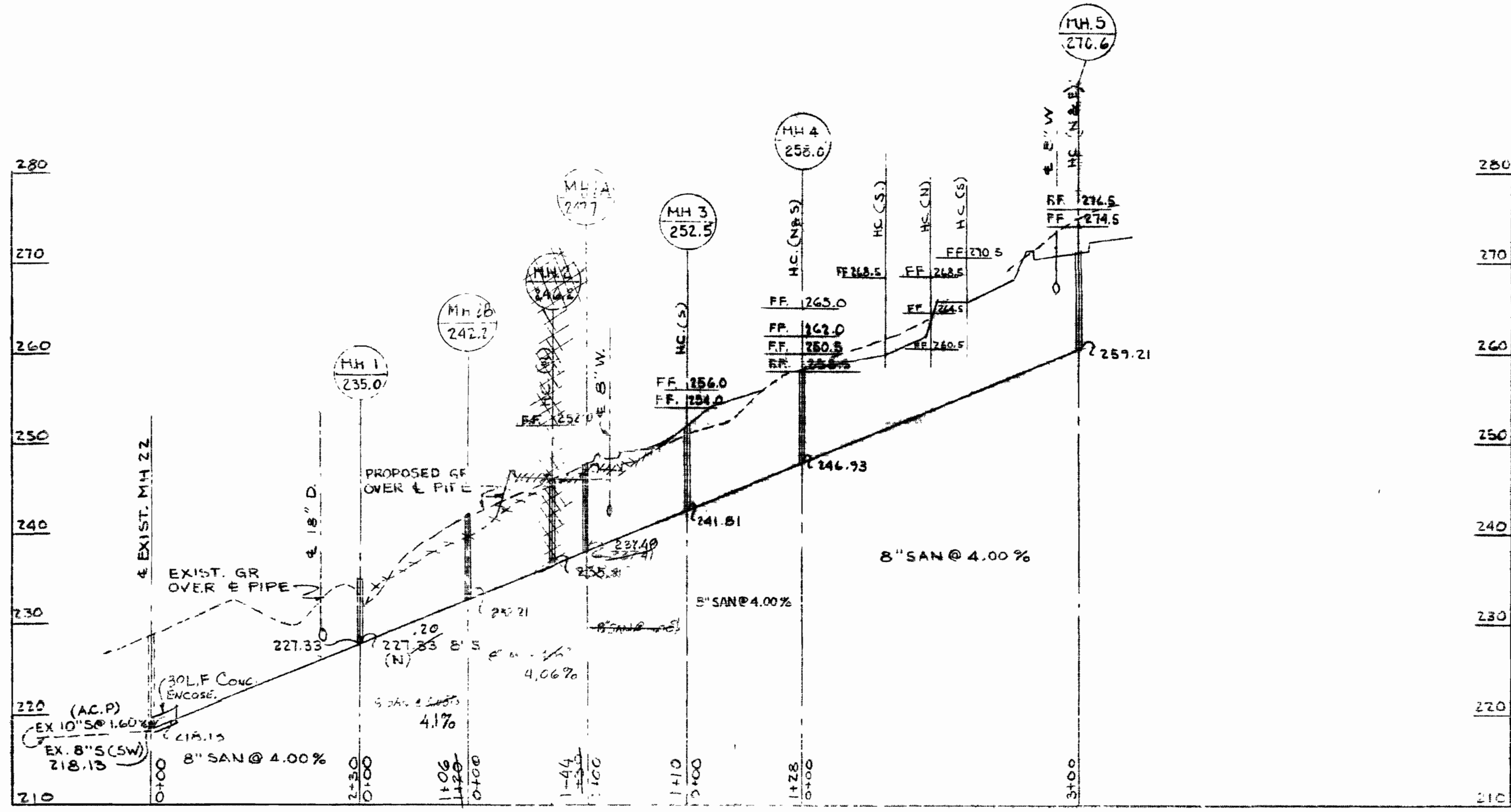
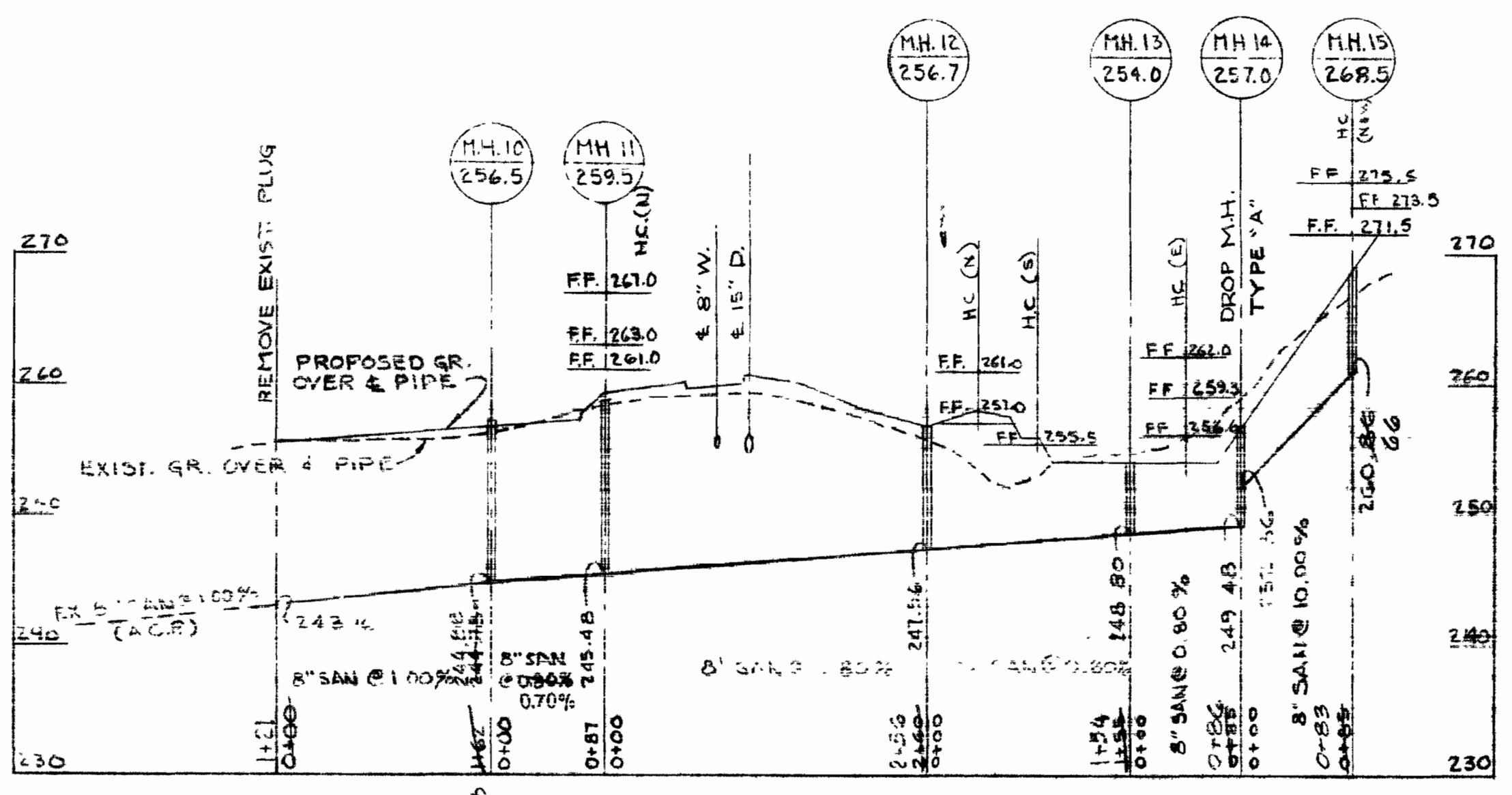
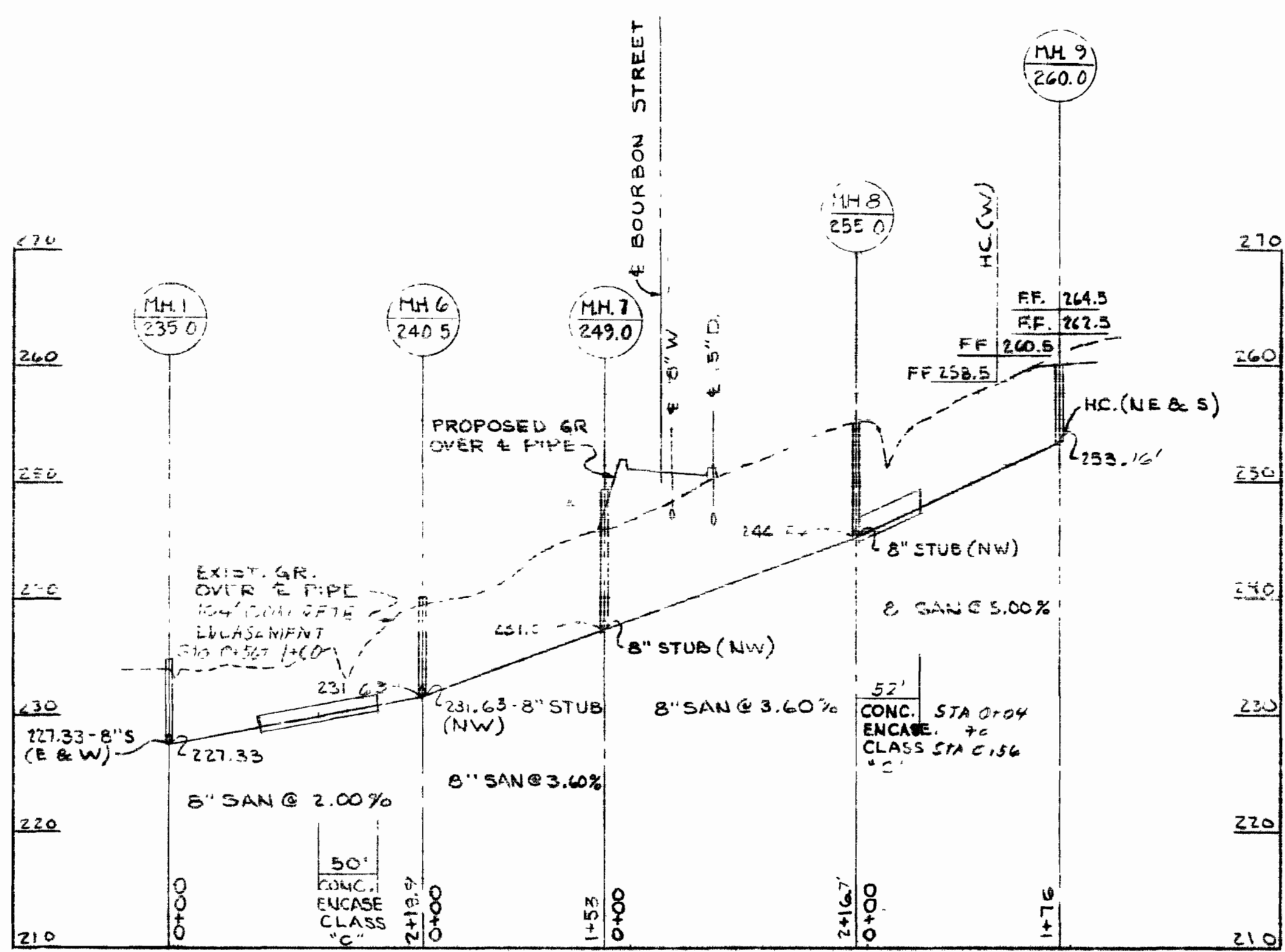


suspend

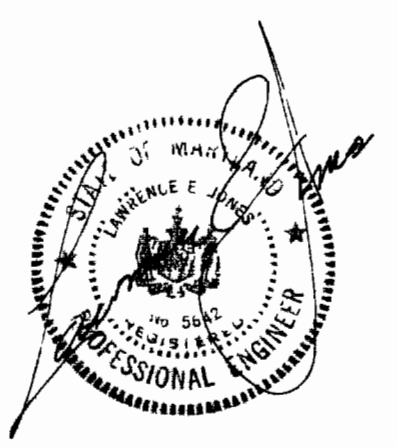
suspend



SCALE: HORIZ. 1" = 100'
VERT. 1" = 10'

GENERAL NOTES

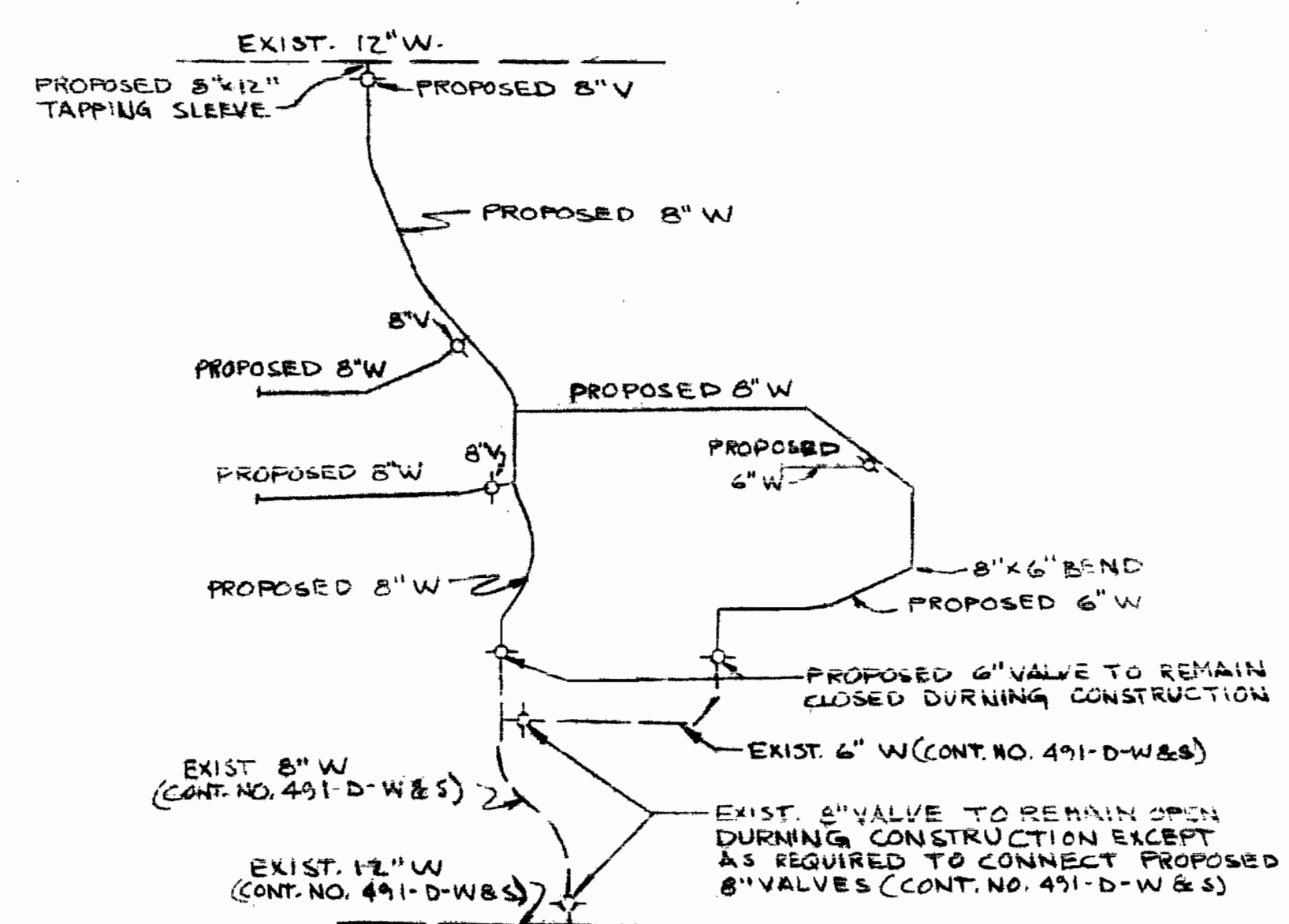
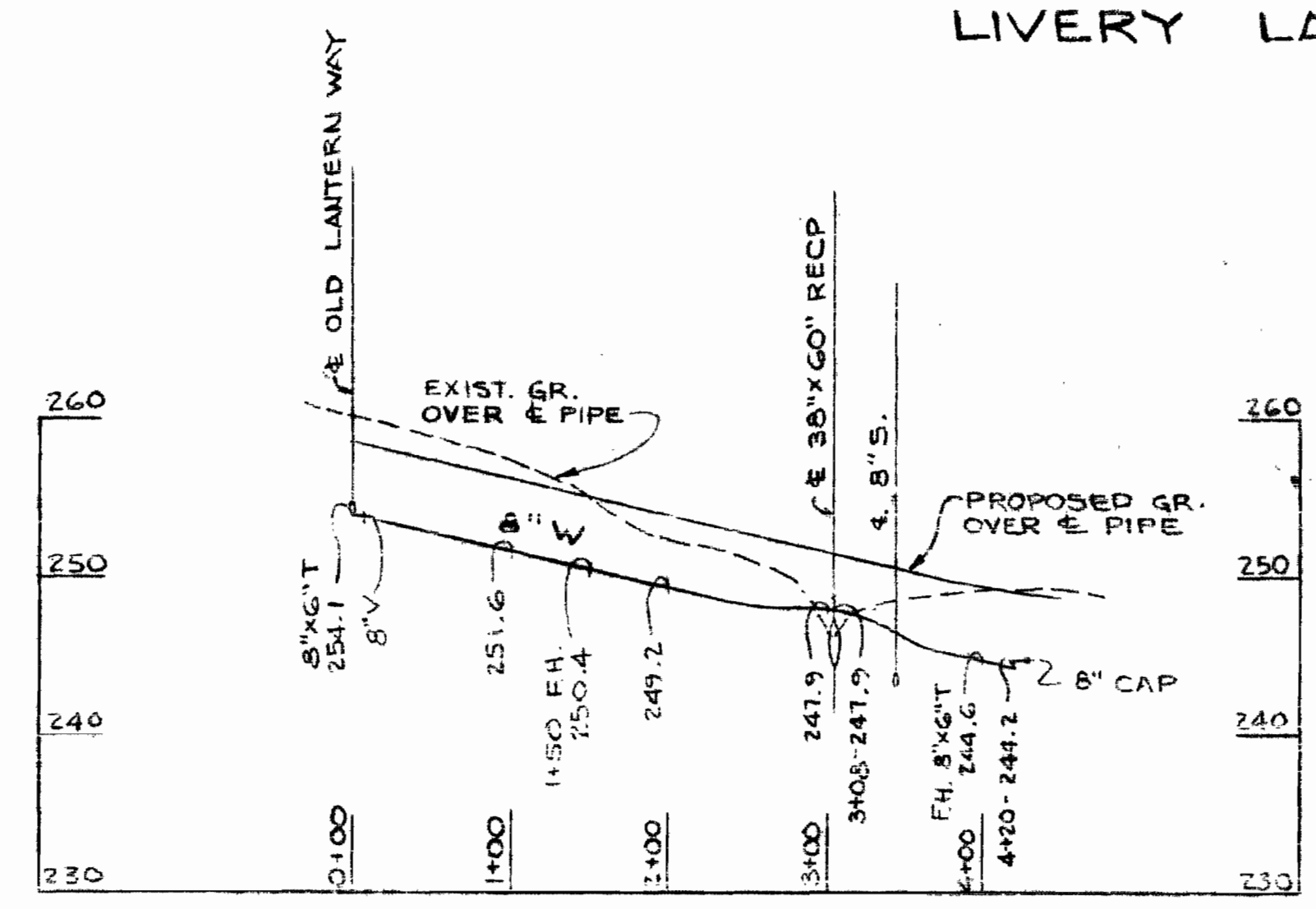
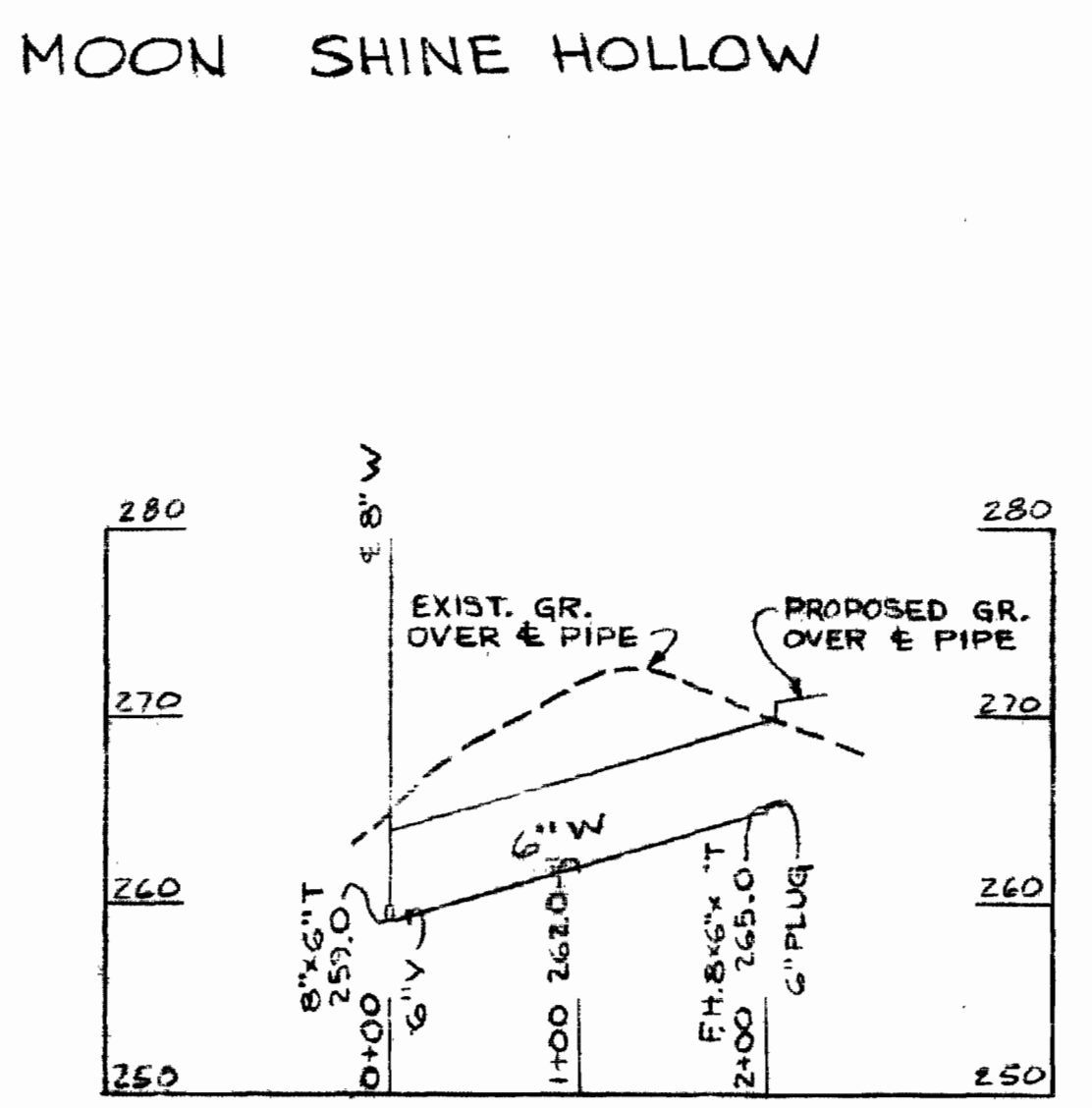
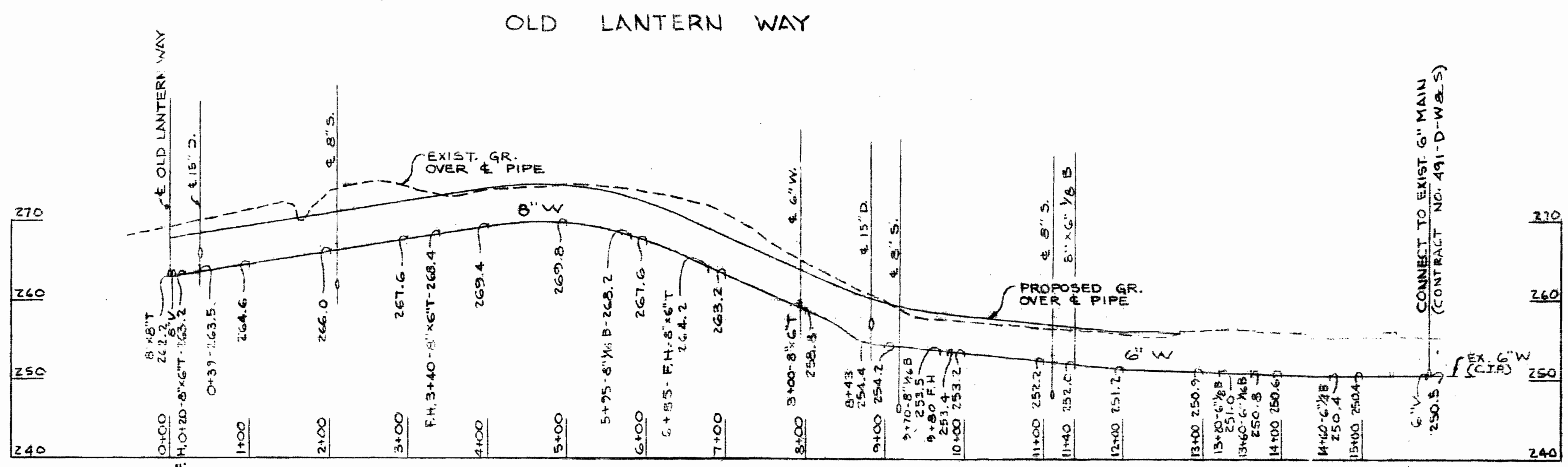
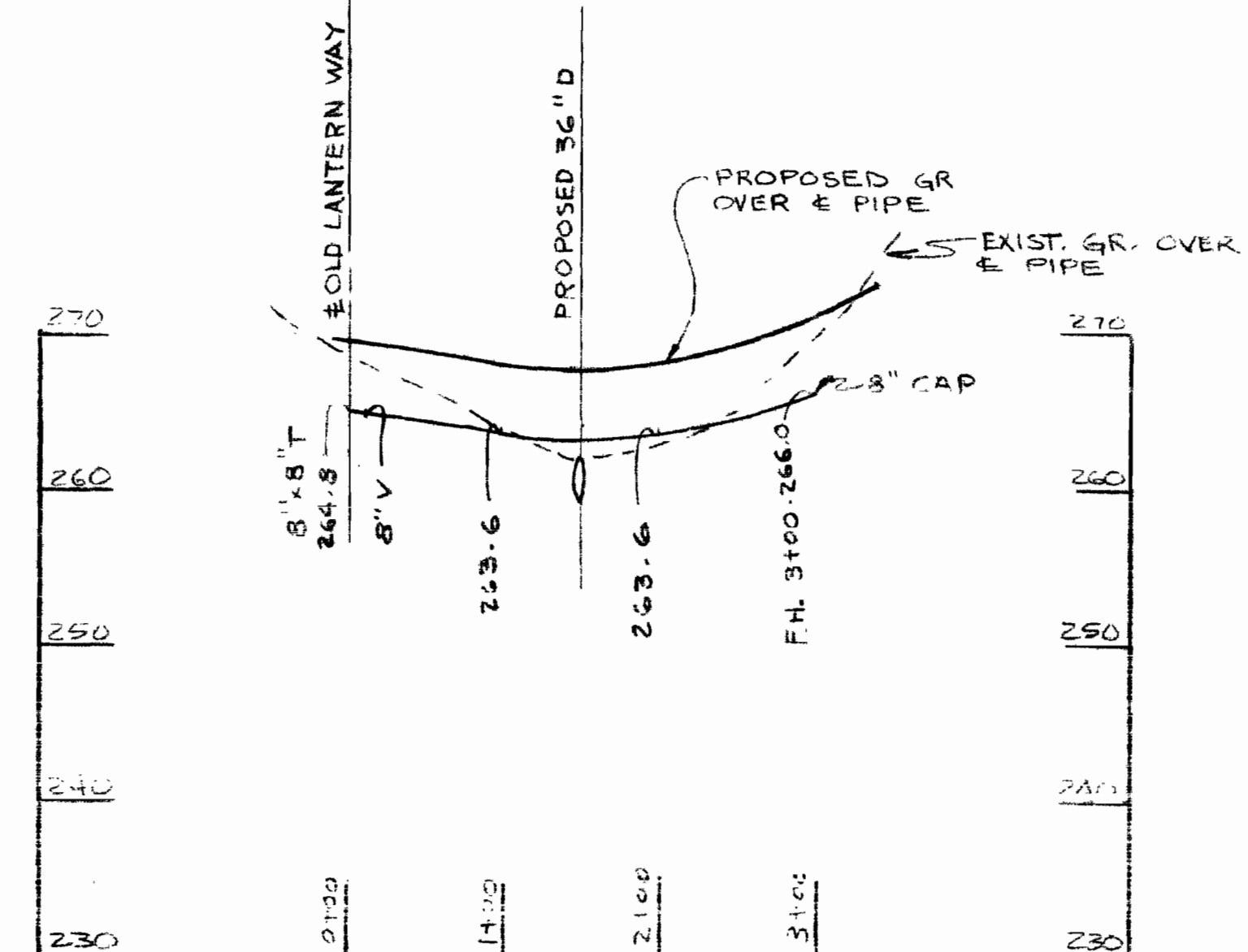
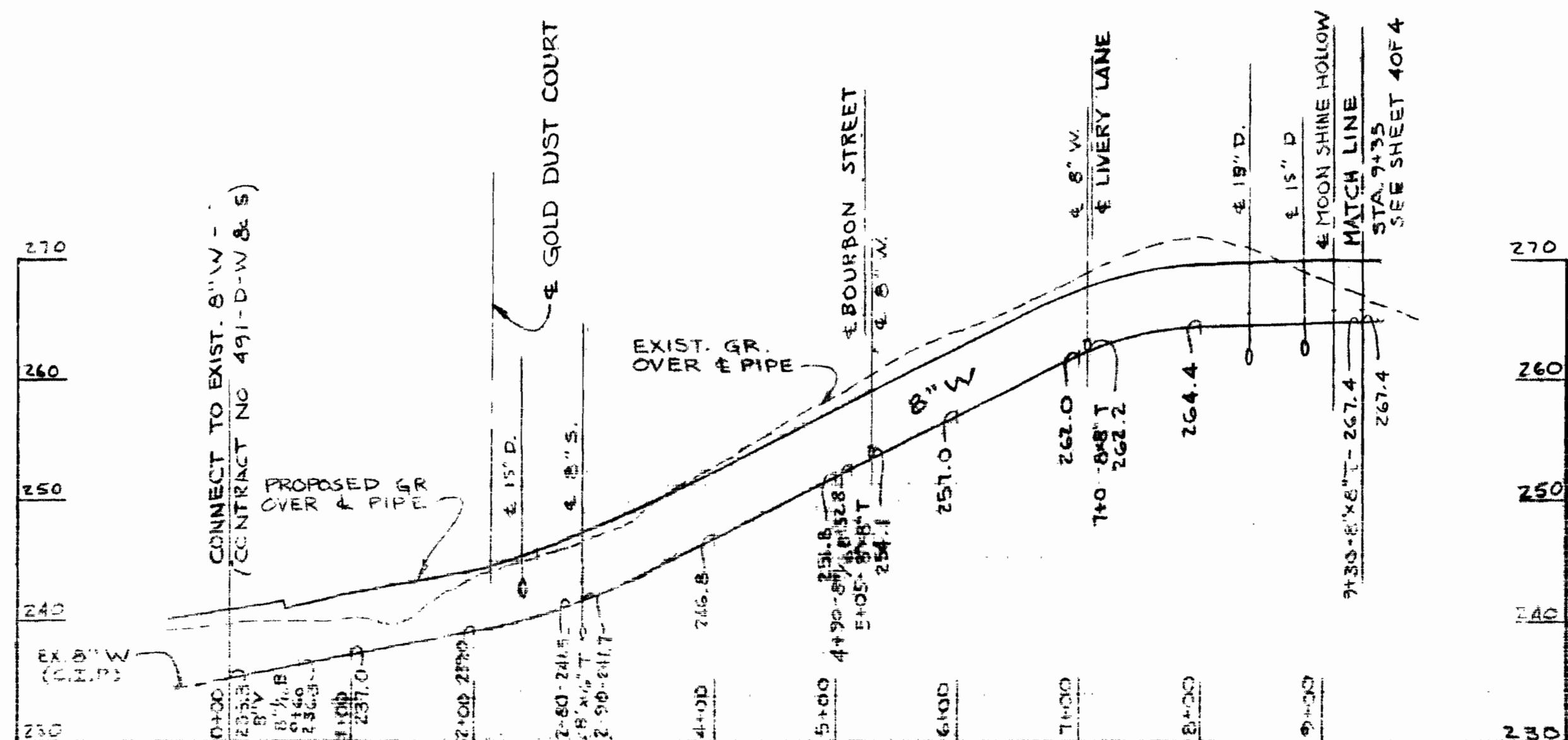
- 1 APPROXIMATE LOCATION OF EXISTING MAINS ARE SHOWN. THE CONTRACTOR SHALL TAKE ALL NECESSARY PRECAUTIONS TO PROTECT EXISTING MAINS AND SERVICES AND MAINTAIN UNINTERRUPTED SUPPLY. ANY DAMAGE INCURRED SHALL BE REPAIRED IMMEDIATELY.
- 2 ALL PIPE ELEVATIONS SHOWN ARE INVERT ELEVATIONS.
- 3 THE CONTRACTOR SHALL LOCATE EXISTING UTILITIES A MINIMUM OF TWO WEEKS IN ADVANCE OF CONSTRUCTION OPERATIONS IN VICINITY OF UTILITIES.
- 4 FOR ALL STANDARD DETAILS SEE STANDARDS BOUND IN SPECIFICATIONS.
- 5 CLEAR ALL UTILITIES BY A MINIMUM OF 2' CLEAR ALL POLES BY 2'-0" MINIMUM OR TUNNEL AS REQUIRED.
- 6 THE CONTRACTOR SHALL PROVIDE A JOINT IN ALL SEWER MAINS WITHIN 2'-0" OF EXTERIOR MANHOLE WALLS.
- 7 ALL MANHOLES SHALL BE 4'-0" INSIDE DIAMETER.
- 8 ALL WATER MAINS TO HAVE A MINIMUM OF 3'-6" COVER UNLESS OTHERWISE NOTED.
- 9 BLOCK ALL FITTINGS WITH CONCRETE, SEE STANDARDS BOUND IN SPECIFICATIONS.
- 10 BURY LINE ELEVATIONS ON FIRE HYDRANTS SHALL BE SET TO THE ELEVATION SHOWN ON THE DRAWINGS.
- 11 ALL FIRE HYDRANTS SHALL BE STRAPPED TO THE TEE AND SHALL BE BUTTRESSED WITH CONCRETE IN ACCORDANCE WITH STANDARD DETAILS.
- 12 PERMANENT BENCHMARK. RAILROAD SPIKE IN 10" DIAM. 250' NORTHEAST FROM SOUTHWEST PROPERTY LINE CORNER OF SECTION 4. APPROXIMATELY 18" INSIDE PROPERTY LINE ELEVATION 257.028.



WHISKEY BOTTOM APARTMENTS
SECTION 4
CONTRACT NO. 2571-D-W&S

DEPARTMENT OF PUBLIC WORKS HOWARD COUNTY, MARYLAND 11-6-73 DATE	CONTRACT NO. 2571-D-W&S W. O. Gilbert CHIEF-BUREAU OF ENGINEERING	SANITARY SEWERS PROFILES	SECTION 4 WHISKEY BOTTOM APARTMENTS 6TH. ELECTION DISTRICT, HOWARD COUNTY, MD.	DRAWING NO. 2 OF 4	SCALE AS SHOWN	DES. R.J.L. DRN. R.J.L. CIVIL ENGINEER DATE 5/8/73
				REV. 10/12/73 AS BUILT 12-16-74 M.W.	REV. 10/24/73	

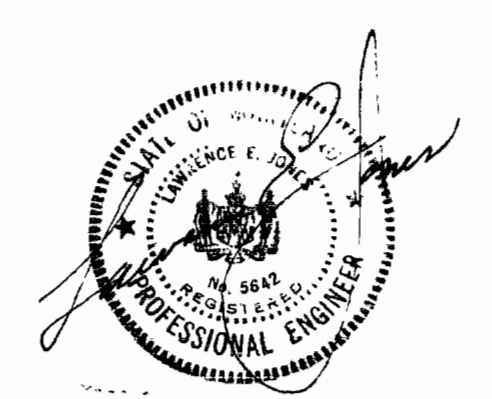
WS 571. 10/15/73



SKETCH SHOWING WATER VALVES TO BE CLOSED DURING CONSTRUCTION NOT TO SCALE

SCALE: HORIZ. 1" = 100'
VERT. 1" = 10'

WHISKEY BOTTOM APARTMENTS
SECTION 4
CONTRACT NO. 2571-D-W & S



DEPARTMENT OF PUBLIC WORKS
HOWARD COUNTY, MARYLAND
11-6-73
DATE

W. O. Kellard
CHIEF-BUREAU OF ENGINEERING

CONTRACT NO. 2571-D-W & S

WATER MAINS
PROFILES

SECTION 4
WHISKEY BOTTOM APARTMENTS
6TH. ELECTION DISTRICT, HOWARD COUNTY, MD.

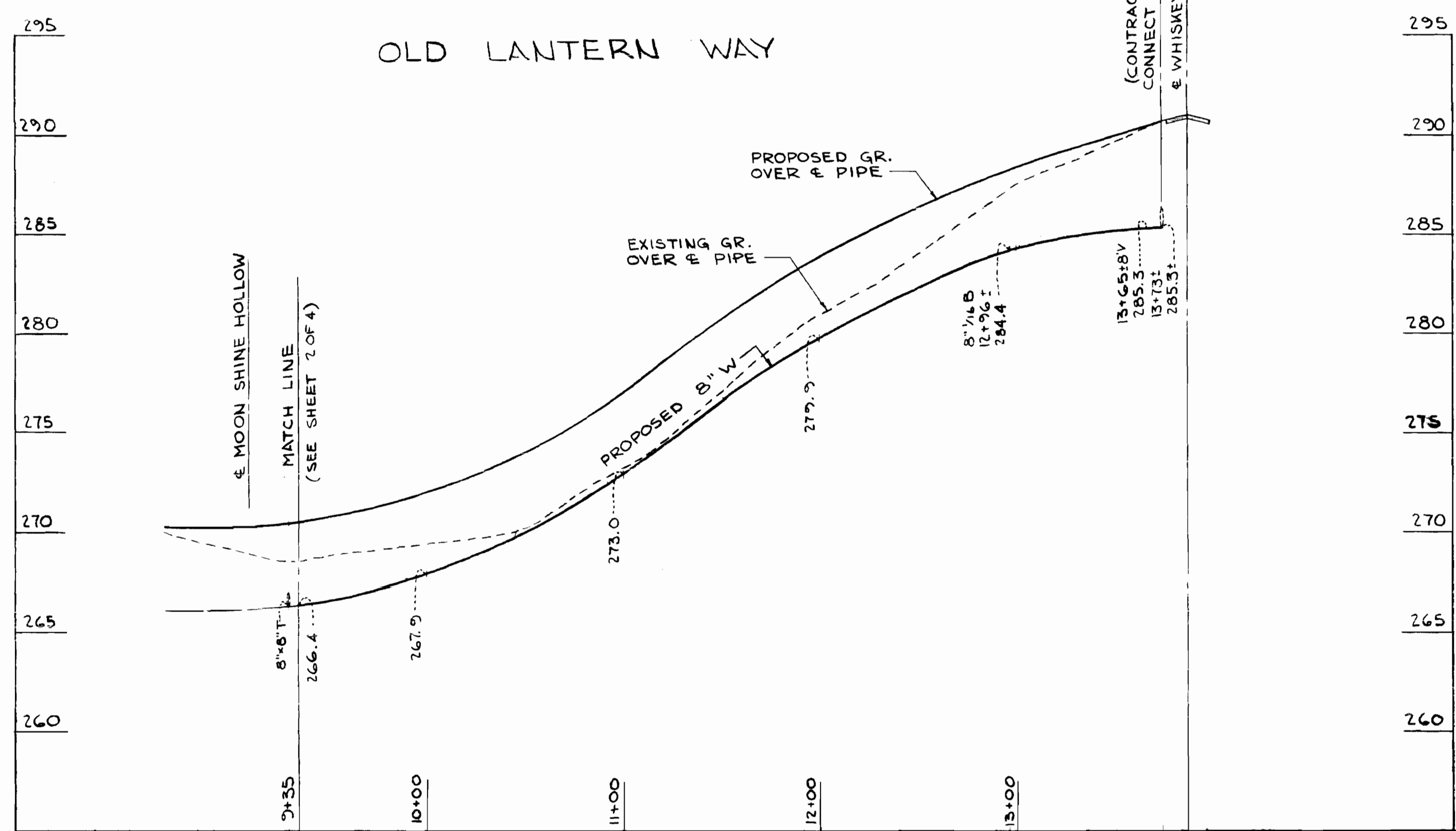
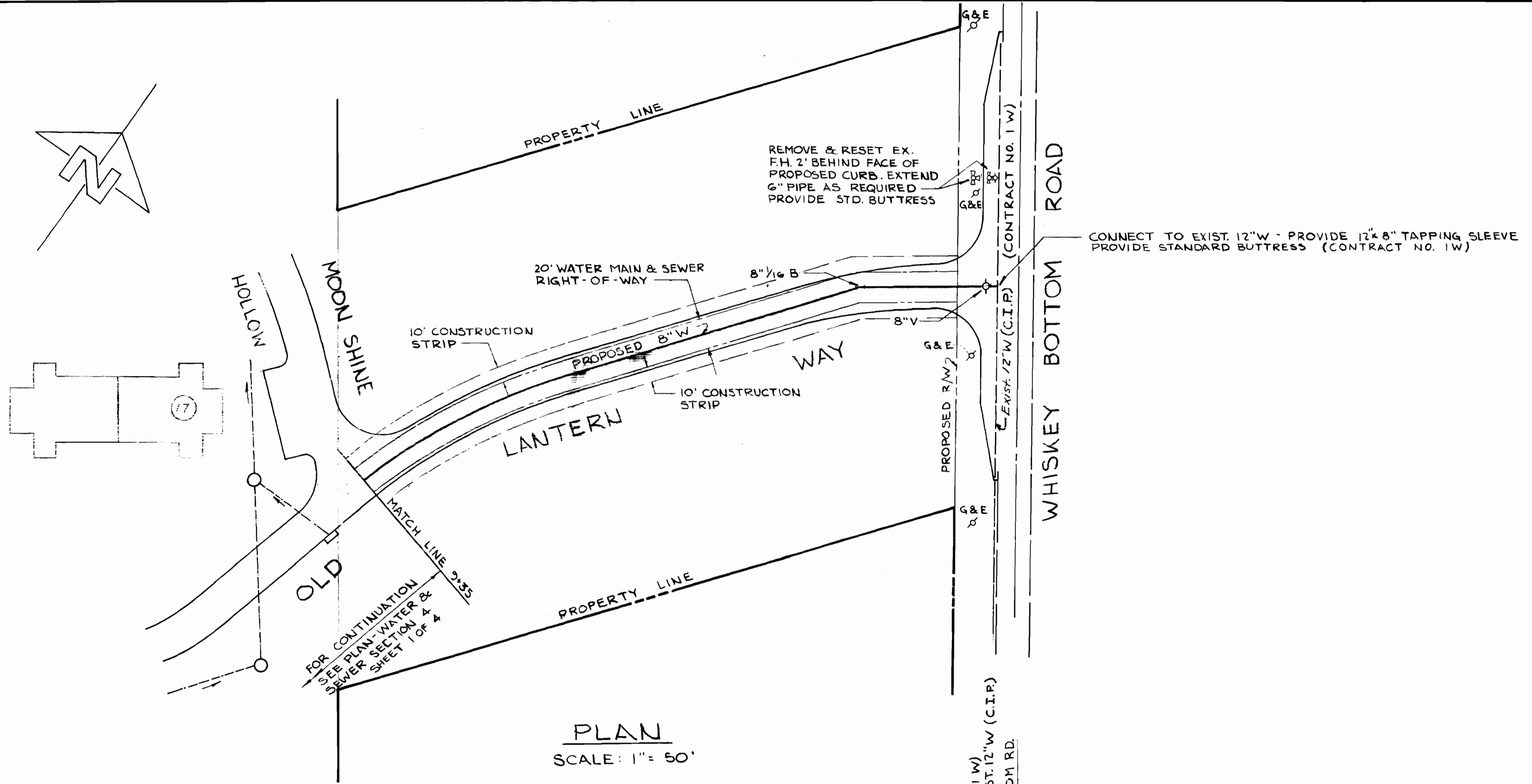
DRAWING
NO. 3
OF 4

SCALE
AS
SHOWN

DES. R. J. L.
DRN. R. J. L.
CHKD. L. E. J.
DATE 5/8/73
REV. 10/12/73
REV. 10/24/73

superior

superior



Samuel J. Johnson

WHISKEY BOTTOM APARTMENTS
SECTION 4
CONTRACT NO. 2571-D-W&S

	DEPARTMENT OF PUBLIC WORKS HOWARD COUNTY, MARYLAND DATE 11-6-73	CONTRACT NO. 2571-D-W&S CHIEF-BUREAU OF ENGINEERING	WATER MAIN EXTENSION PLAN AND PROFILE	SECTION 4 WHISKEY BOTTOM APARTMENTS 6TH. ELECTION DISTRICT, HOWARD COUNTY, MD.	DRAWING NO. 4 OF 4 AS SHOWN	SCALE AS SHOWN	DES. R.J.L. DRN. R.J.L. CKD. L.E.J. DATE 10/5/73
	REV. 10/24/73						

WS 571-W&S/4