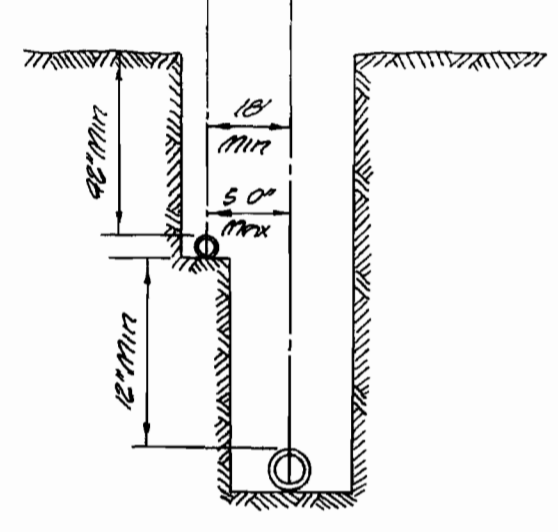
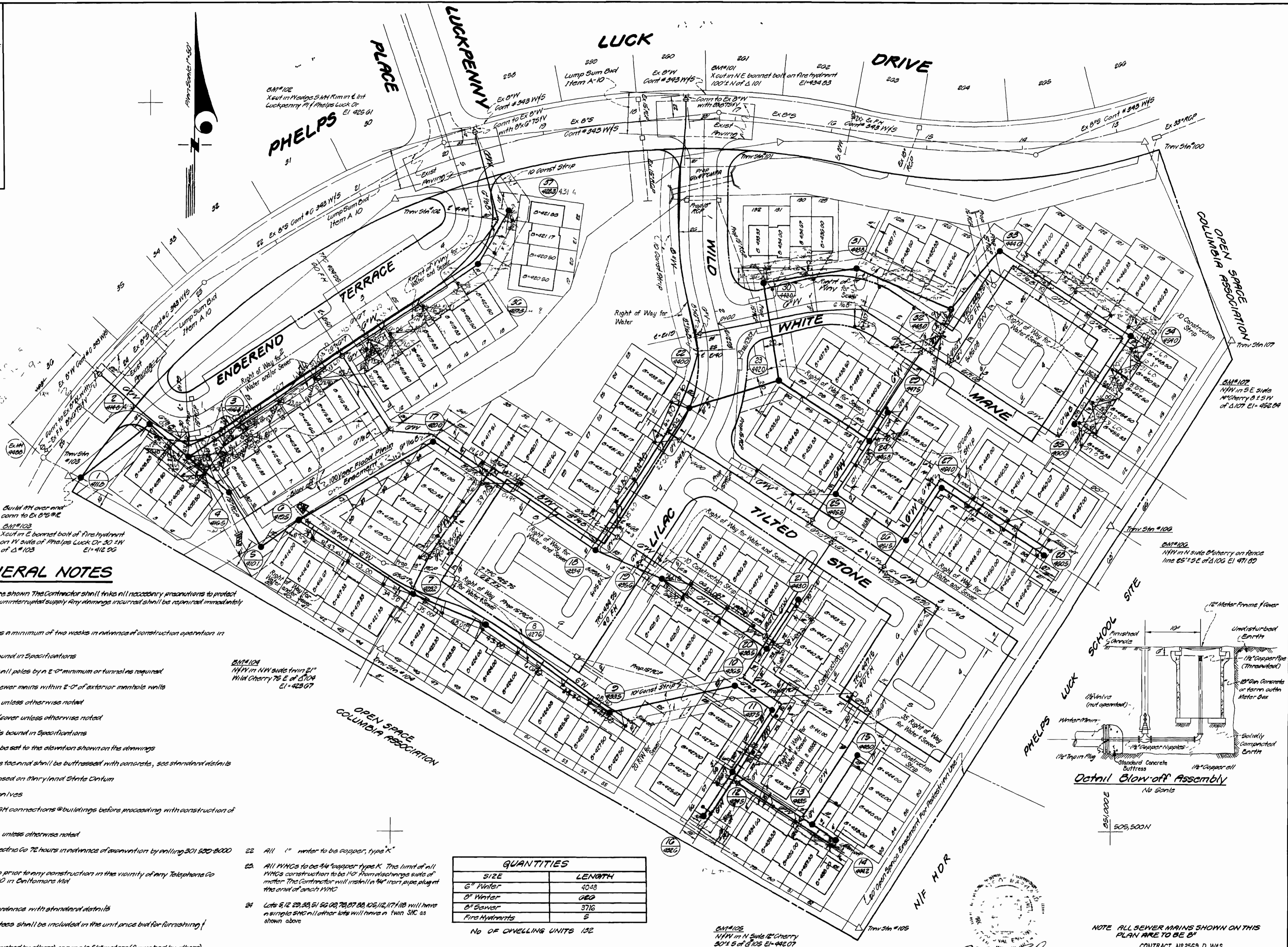


VICINITY MAP
Scale 1"=100'



WATER/SEWER
SAME TRENCH DETAIL
No Scale



GENERAL NOTES

- Approximate location of existing mains are shown. The Contractor shall take all necessary precautions to protect existing mains and services and maintain uninterrupted supply. Any damage incurred shall be repaired immediately.
- All pipe elevations are invert elevations.
- The Contractor shall locate existing utilities a minimum of two weeks in advance of construction operations in vicinity of utilities.
- For all structural details see structural details bound in Specifications.
- Clear all utilities by a minimum of 6" clear all poles by a 2'-0" minimum or tunnels required.
- The Contractor shall provide a joint in all sewer mains within 2'-0" of exterior manhole walls.
- All manholes shall be 4'-0" inside diameter, unless otherwise noted.
- All water mains to have a minimum of 3/2" cover unless otherwise noted.
- Block all fittings with concrete, structural details bound in Specifications.
- Bury line elevations on fire hydrants shall be set to the elevation shown on the drawings.
- All fire hydrants shall be strapped to the tee and shall be buttressed with concrete, see structural details.
- All horizontal and vertical controls are based on Maryland State Datum.
- All water house connections shall have valves.
- Contractor shall verify locations of WMSH connections @ buildings before proceeding with construction of on-site facilities.
- All water mains shall be CIP, DIP or ACPK unless otherwise noted.
- Contractor shall notify The Baltimore Gas & Electric Co. 72 hours in advance of excavation by calling 301-520-8000 Ext. 60.
- Contractor shall notify the GPE Telephone Co. prior to any construction in the vicinity of any Telephone Co. facilities by calling collect 301-658-0400 in Baltimore Md.
- Hydraulic Equivalent = GSD.
- All valves shall be strapped to tees in accordance with structural details.
- Costs of strapping fire hydrants valves to tees shall be included in the unit price but for finishing of laying of water mains.
- All water meters to be 1/2" or 3/4" meters (furnished by others) or single 3/4" meters (furnished by others). Lots 5, 12, 23, 33, 51, 52, 63, 73, 105, 112, 117, 118 will each have a single 3/4" meter set in a 18" diameter Concrete Meter Vault. All other lots will have a twin 3/4" meter set in a 24" diameter Concrete Meter Vault. All as shown above.

Build off over and
corn to Ex B'S 102
B.M. #103
Xcut in E barret bolt of fire hydrant
on W side of Phelps Luck Dr. 50' SW
of Δ #103
E1=412.50

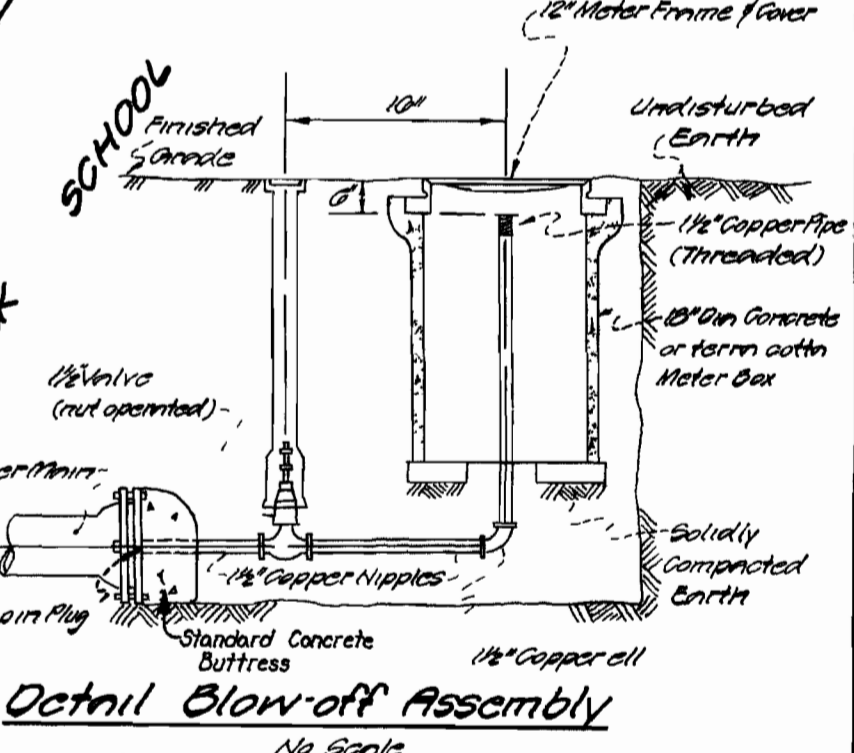
B.M. #104
NW in NW side twin 2"
Wild Cherry 75' E of Δ104
E1=423.07

B.M. #105
NW in NW side 12" Cherry
30' S of Δ105 E1=442.07

QUANTITIES	
SIZE	LENGTH
6" Water	4048
8" Water	680
8" Sewer	3716
Fire Hydrants	5

No. of Swelling Units 132

- All 1" water to be copper, type 'K'.
- All WMSHs to be 3/4" copper type 'K'. The limit of all WMSHs construction to be 1/4" from exchange side of meter. The Contractor will install a 1/4" iron pipe plug at the end of each WMSH.
- Lots 5, 12, 23, 33, 51, 52, 63, 73, 105, 112, 117, 118 will have a single SHC. All other lots will have a twin SHC as shown above.



Detail Blow-off Assembly
No Scale

NOTE: ALL SEWER MAINS SHOWN ON THIS PLAN ARE TO BE 8"

CONTRACT NO. 2563 D WAS
VILLAGE OF LONGBRACH
SECTION 1, AREA 1, PARCEL F
WATER AND SEWER EXTENSIONS

ENGINEERS PLANNERS SURVEYORS
JOHNSON MCCORDIC THOMPSON PA
1020 ELTON ROAD
SILVER SPRING, MARYLAND
20903 434-7000

DEPARTMENT OF PUBLIC WORKS
HOWARD COUNTY, MARYLAND
1-31-74
W. O. P. Chief Bureau of Water and Sewer

CONTRACT NO. 562-0 W/S

PLAN OF WATER/SEWER MAINS

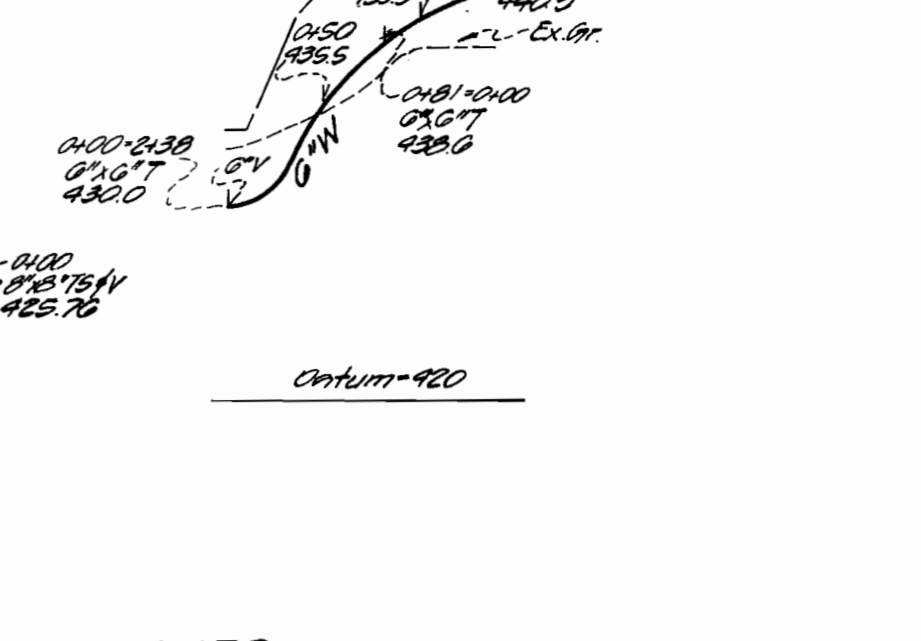
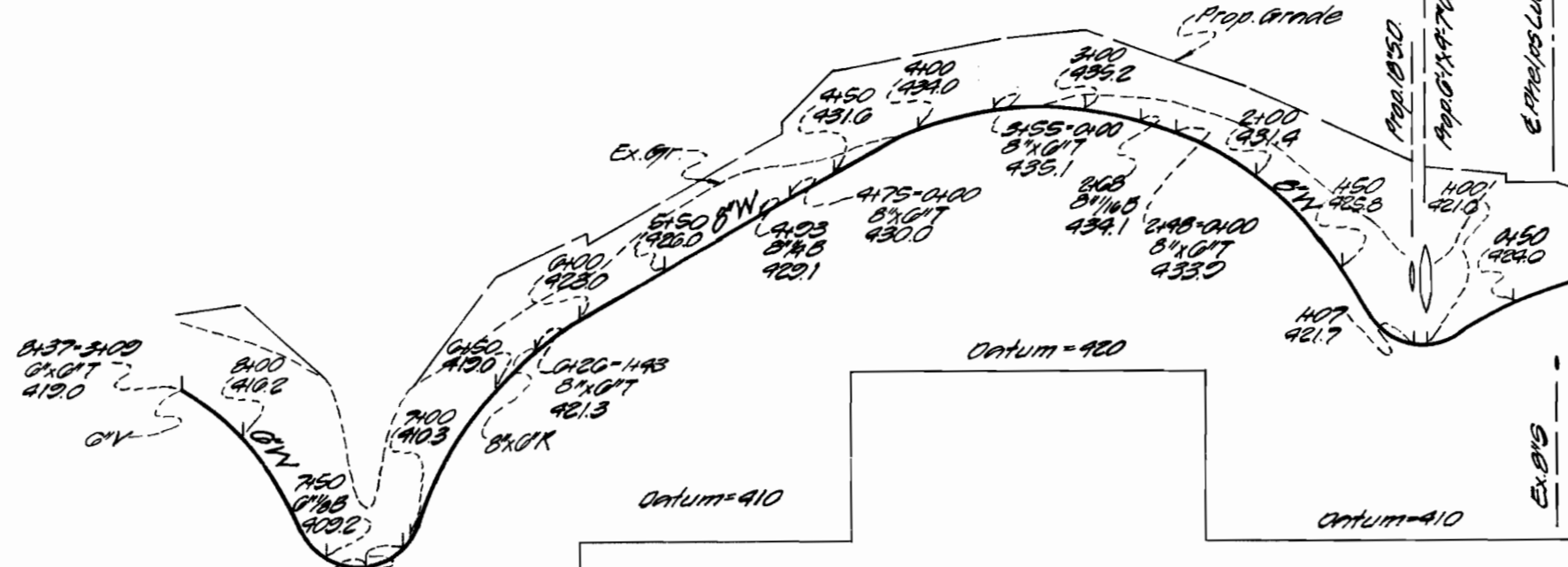
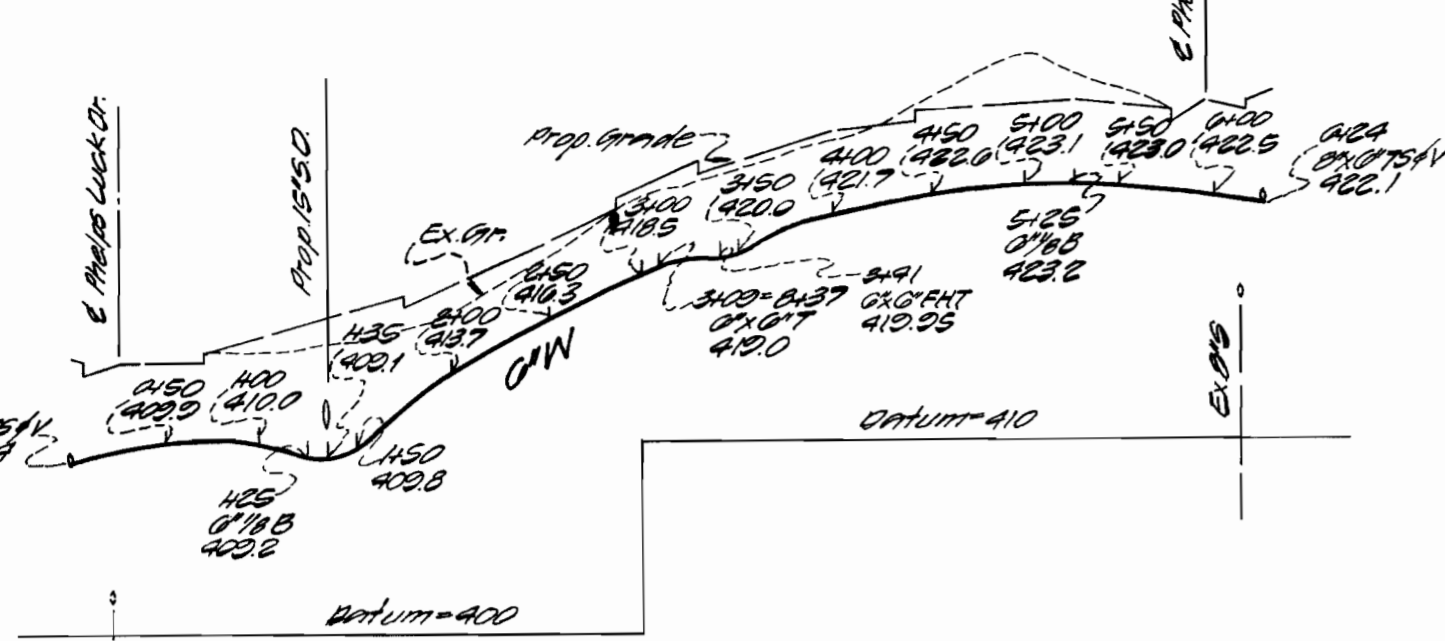
PARCEL F
COLUMBIA
VILLAGE OF LONGBRACH
SECTION 1, AREA 1
6TH ELECTION DISTRICT HOWARD COUNTY, MARYLAND

DRAWING NO. 1 OF 2 SCALE 1"=50'

ENDEREND TERRACE
WATER TO SERVE LOTS 1-22

WILD LILAC TO ENBEREND TERR.
WATER TO SERVE LOTS 23-33

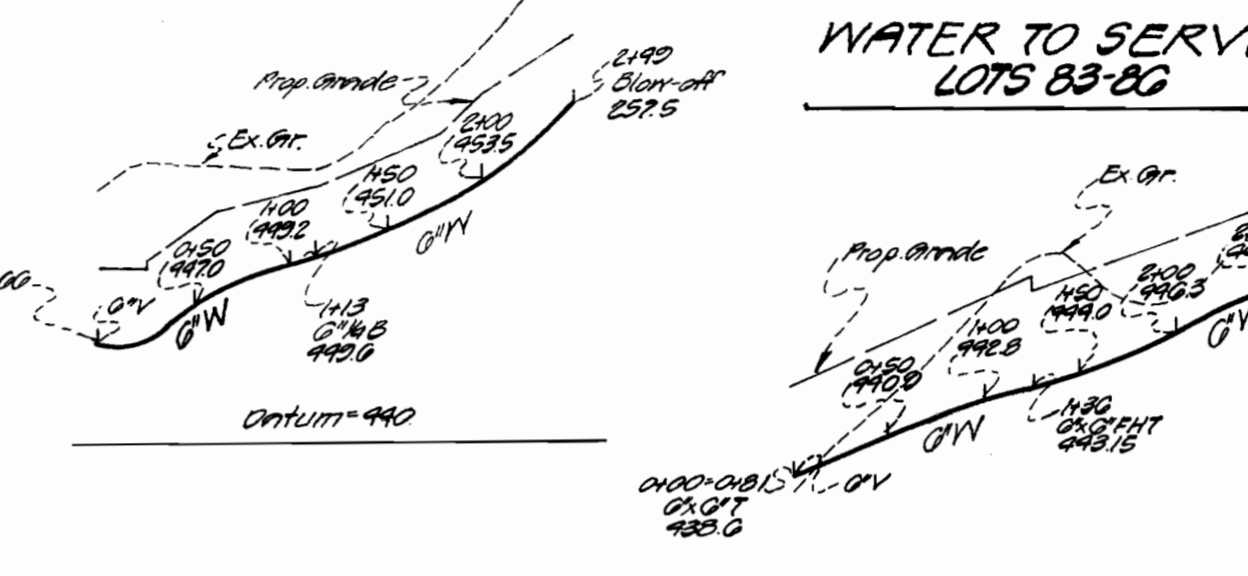
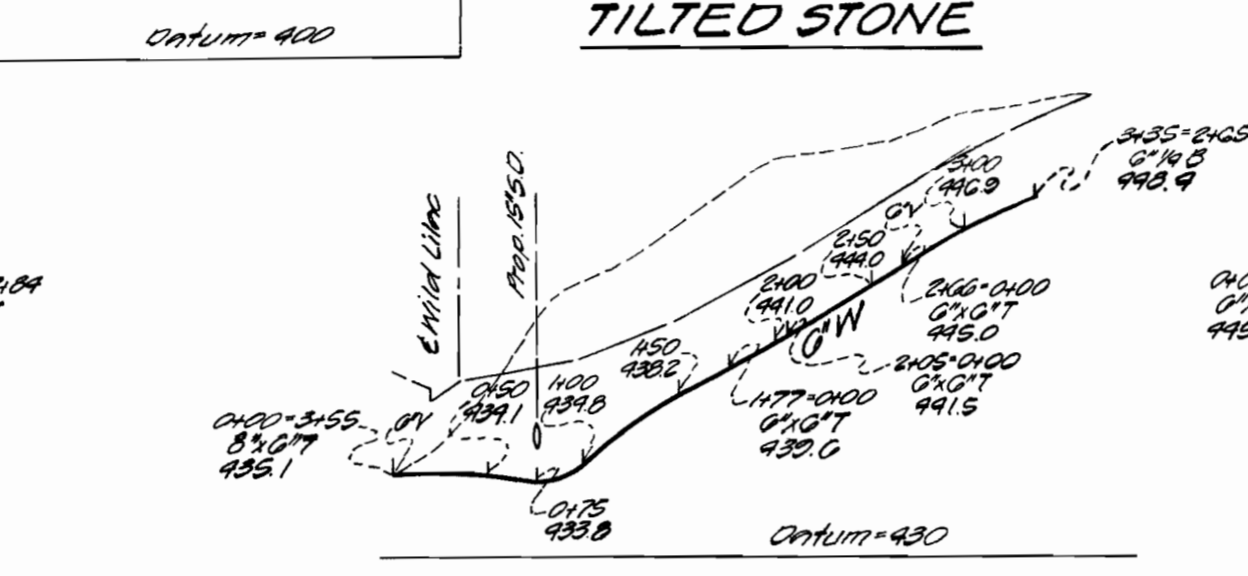
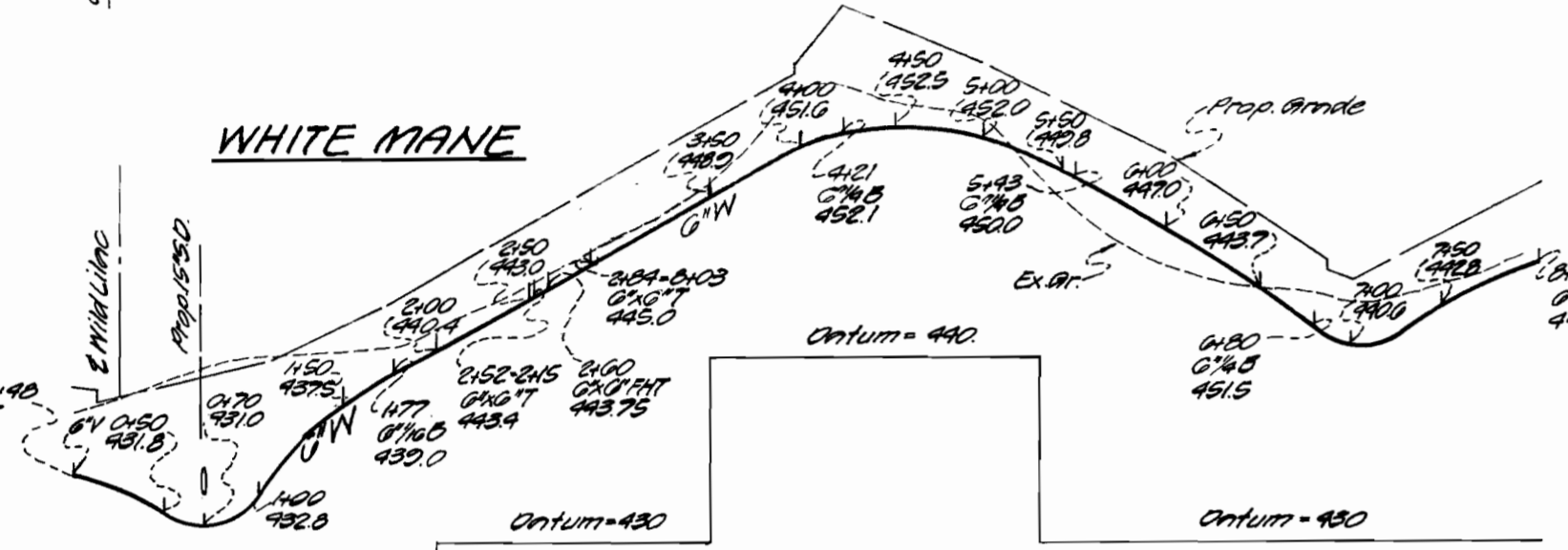
WATER TO SERVE LOTS 78-82



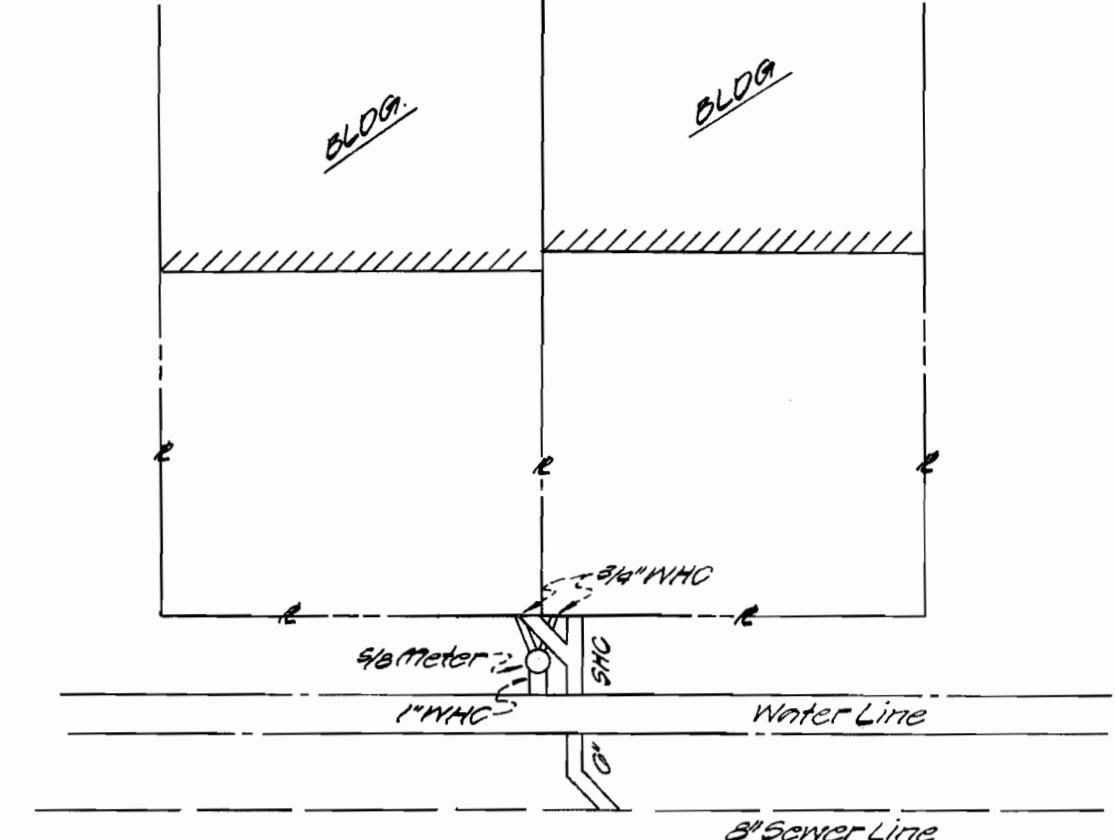
WATER TO SERVE LOTS 112-132

WATER TO SERVE LOTS 87-92/100-111

WATER TO SERVE LOTS 83-86



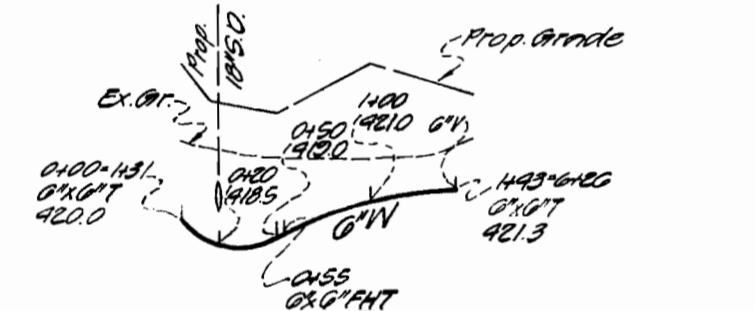
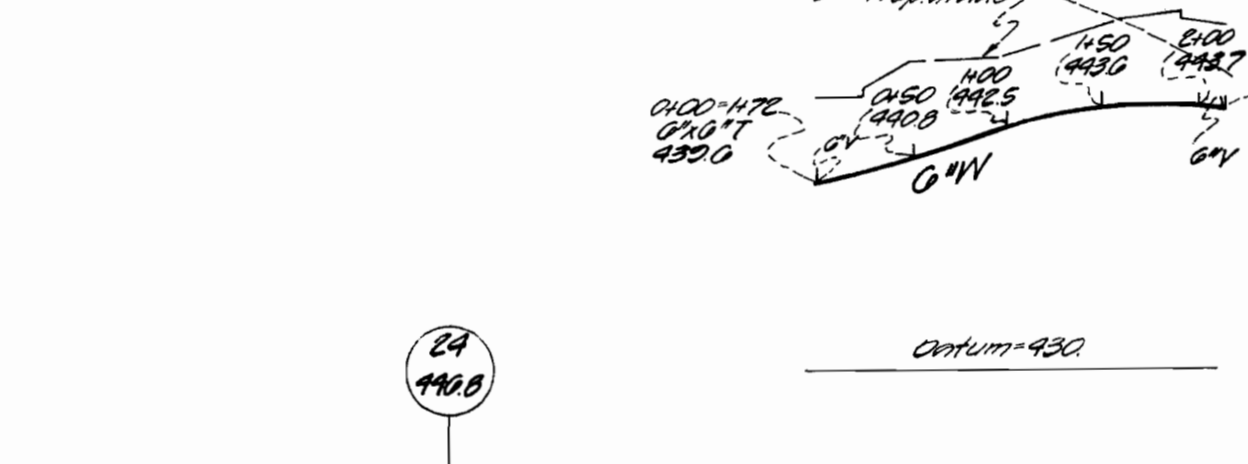
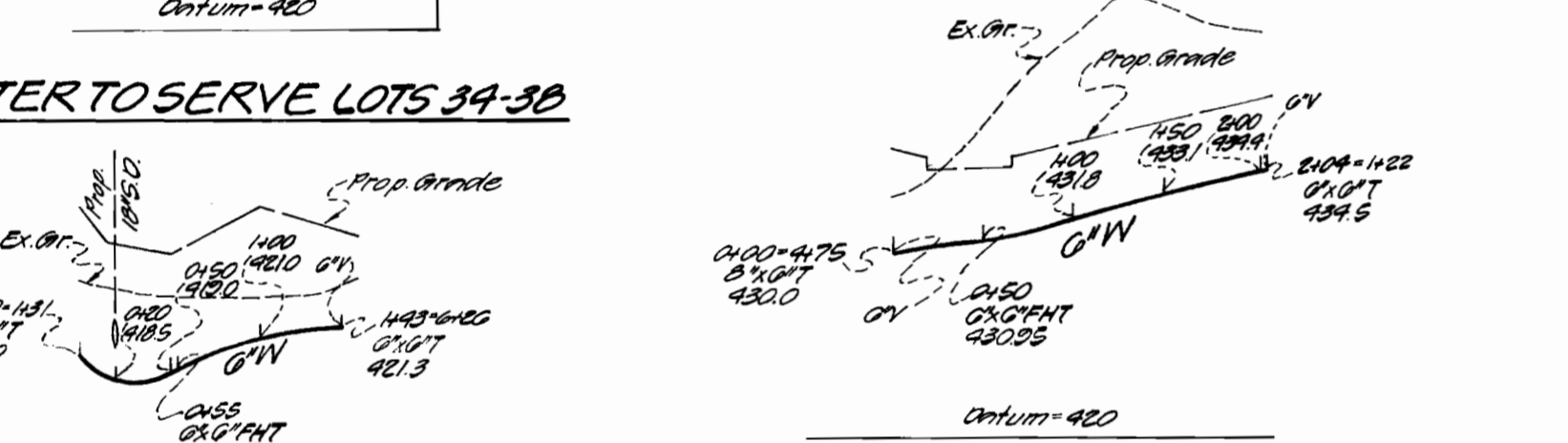
TWINN
WATER & SEWER HOUSE CONNECTION DETAIL
NO SCALE



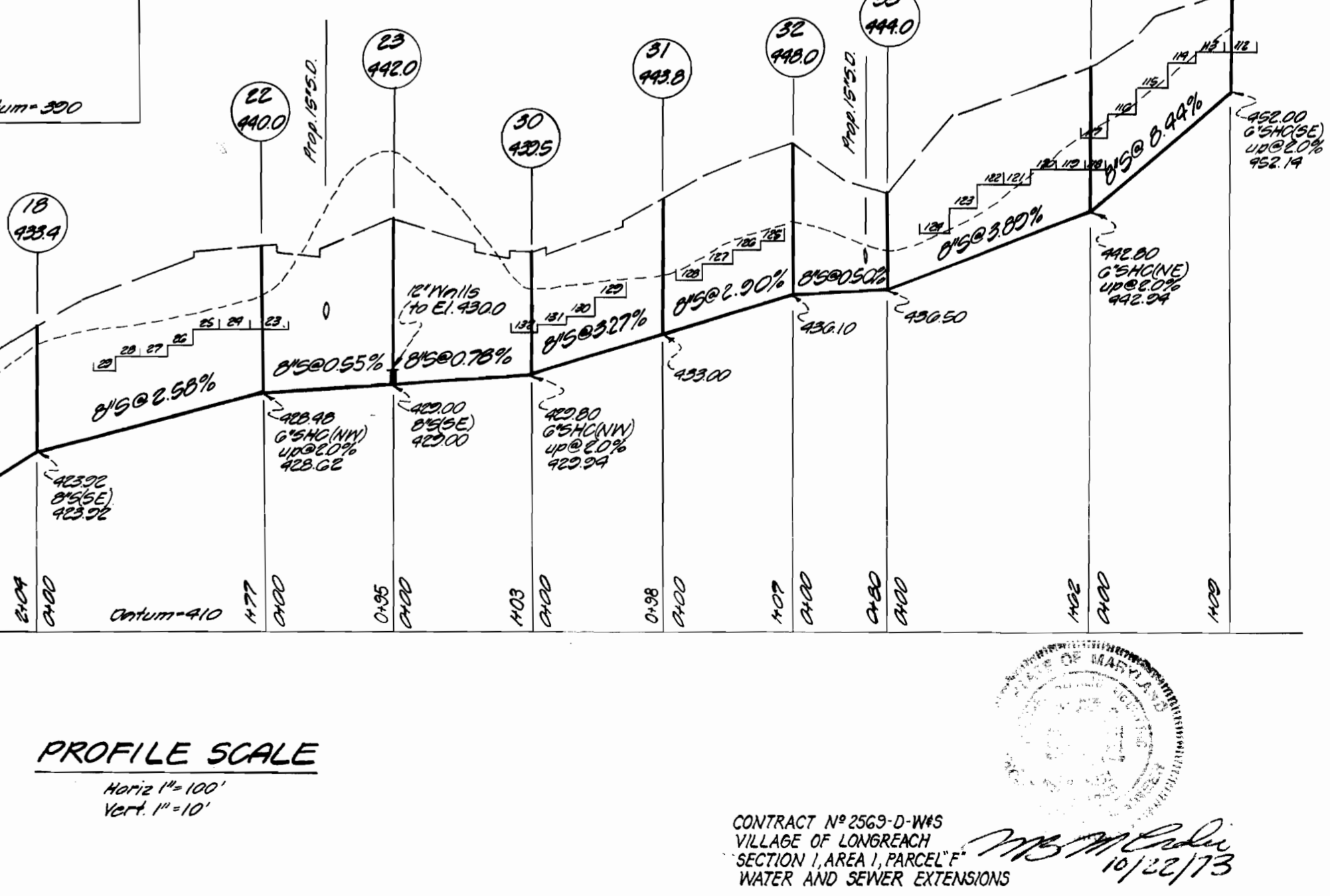
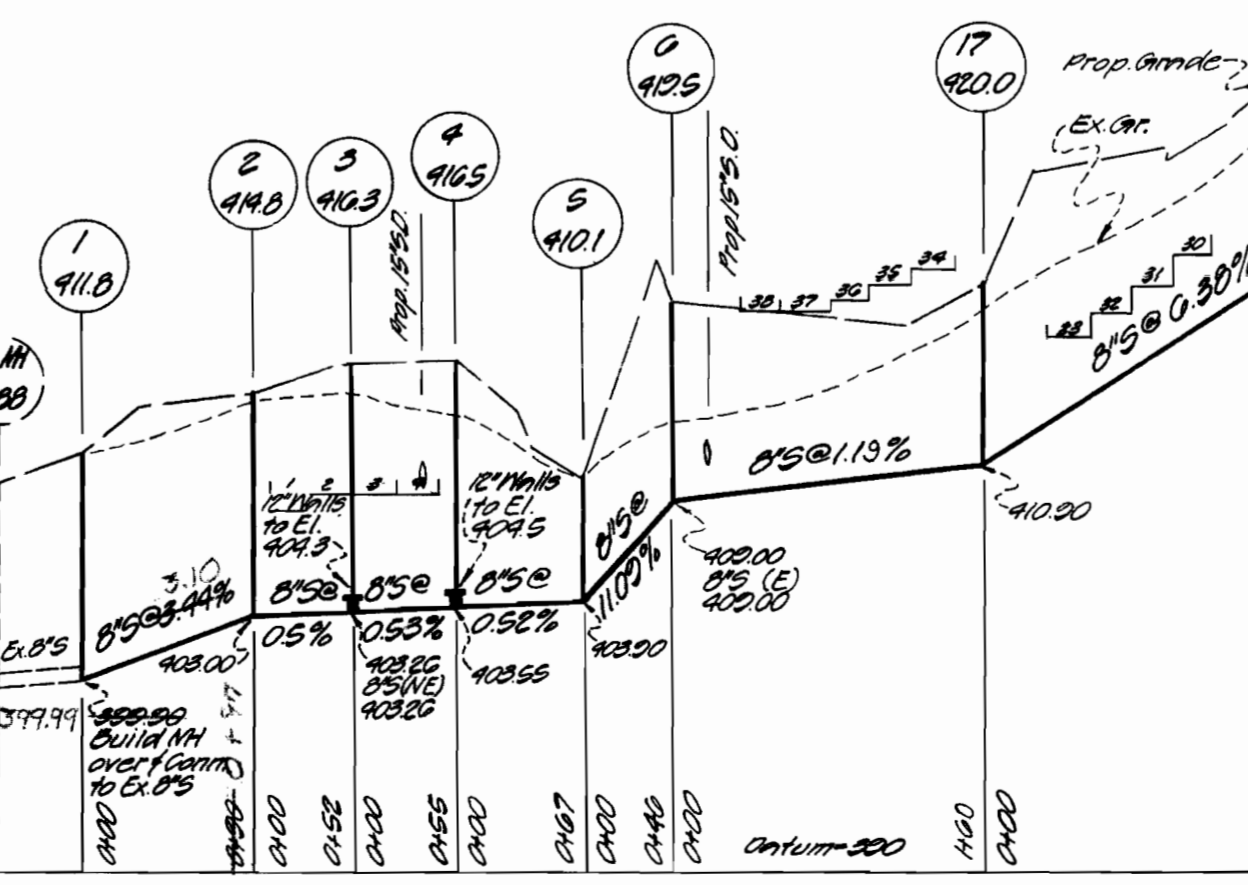
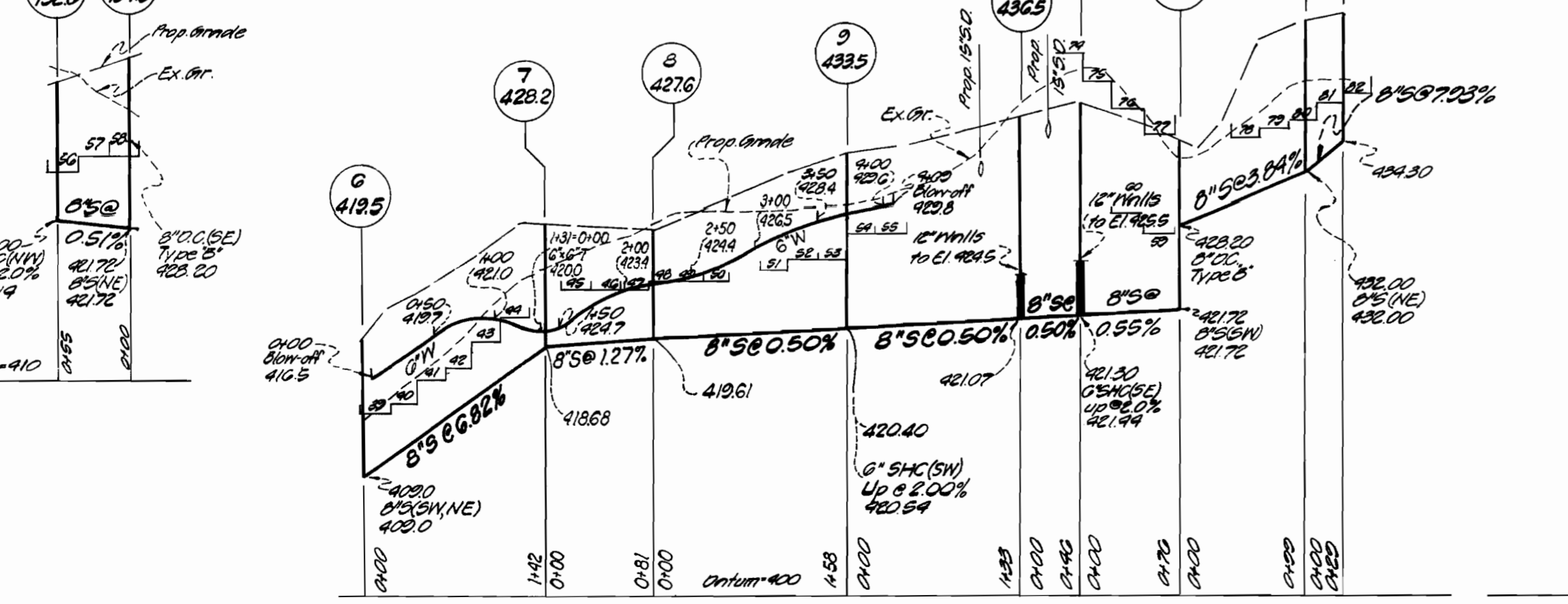
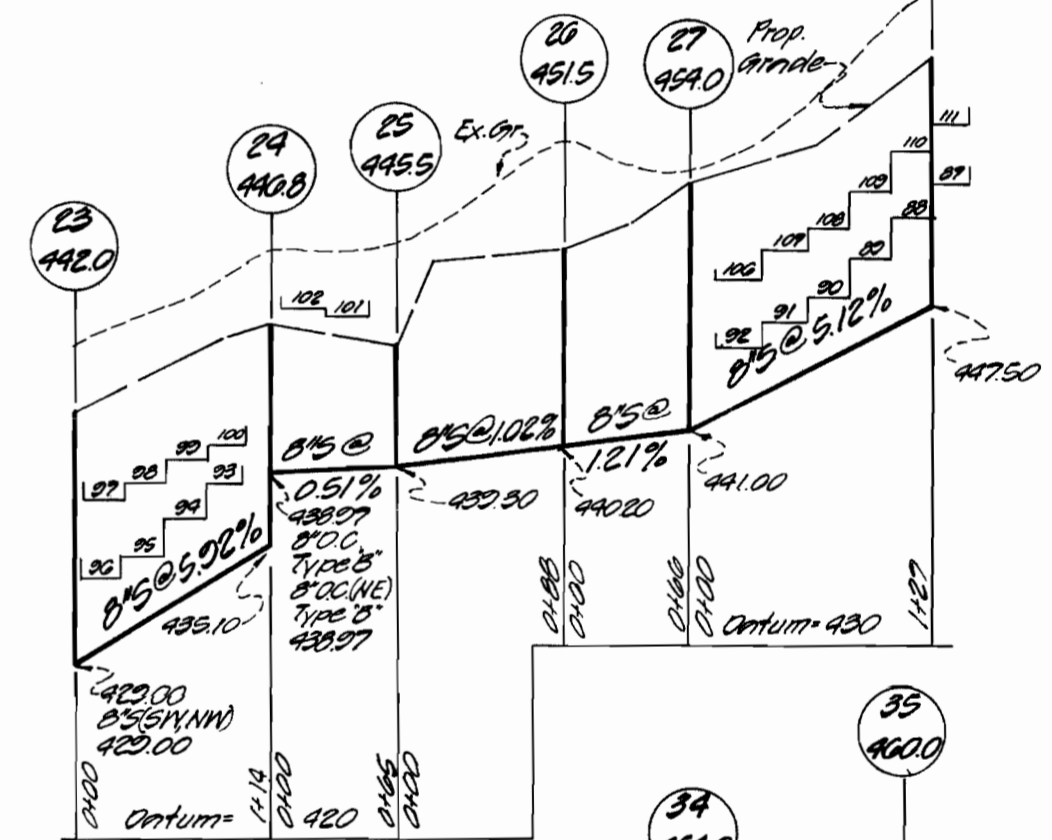
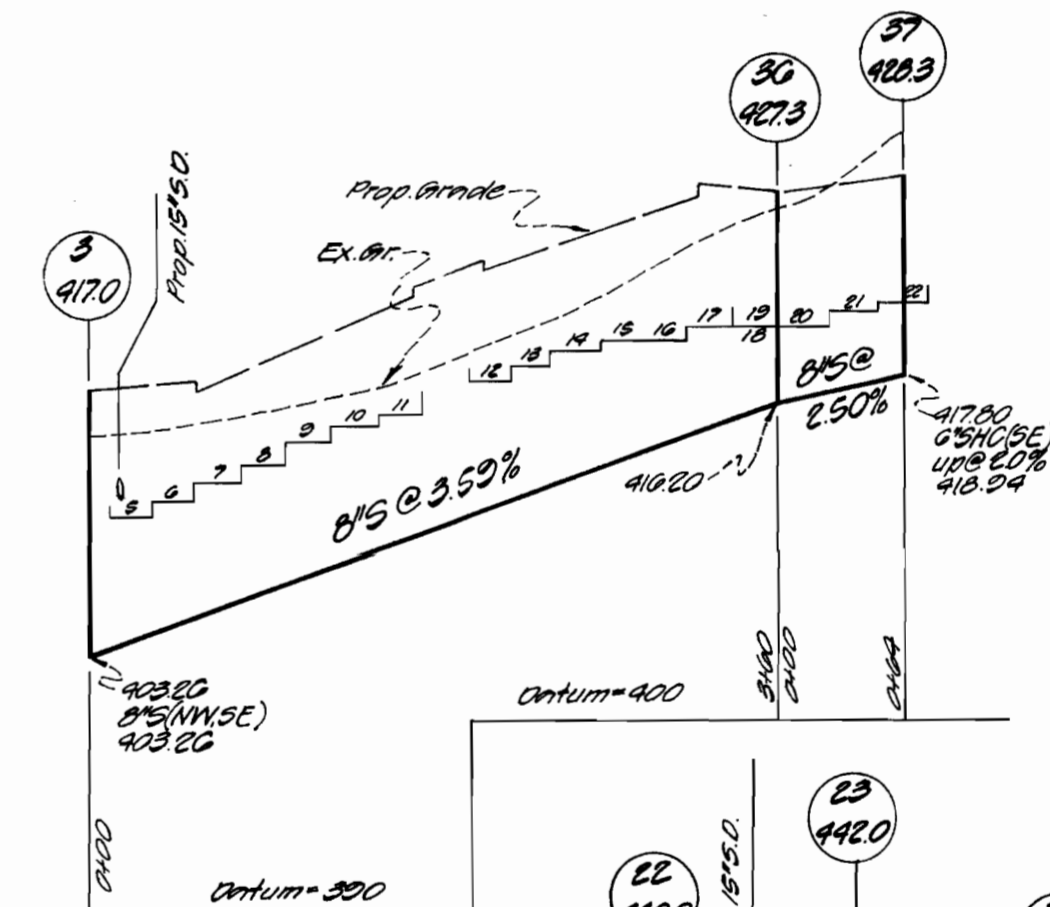
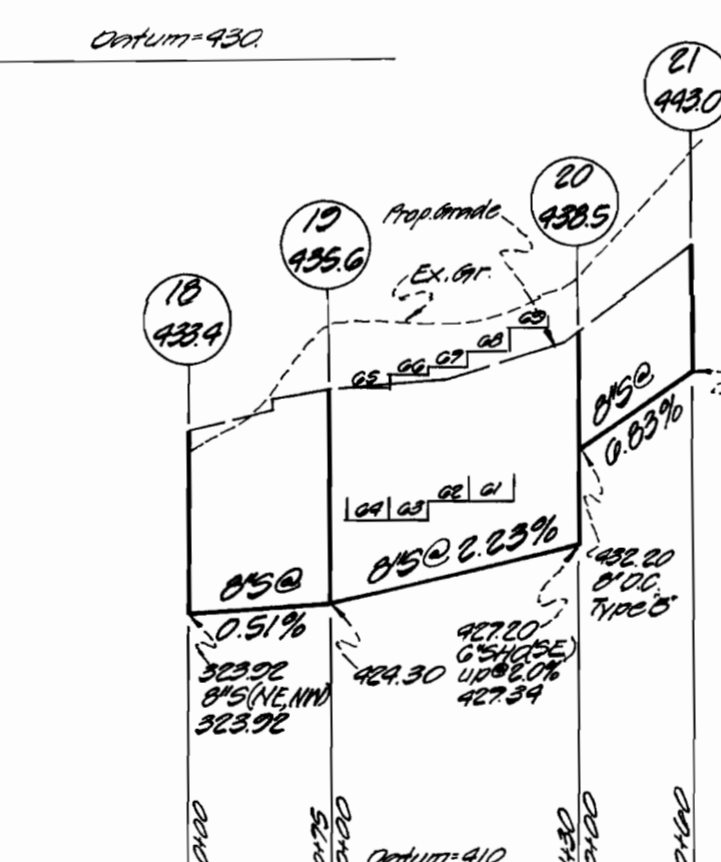
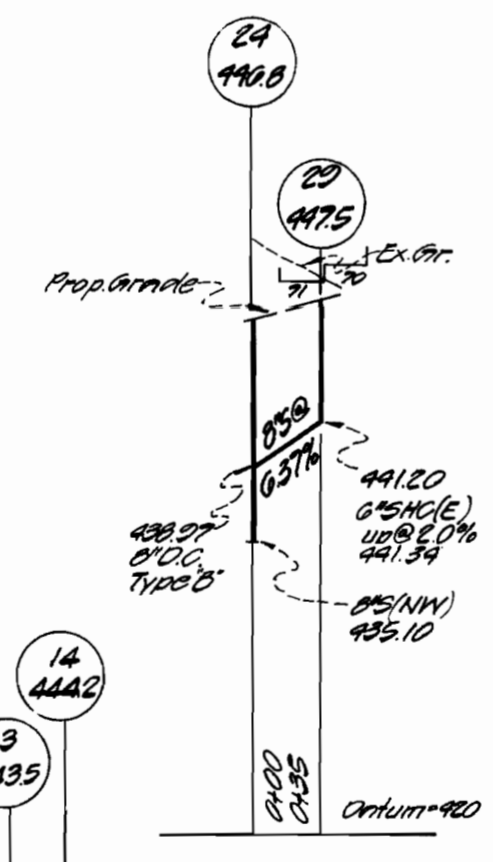
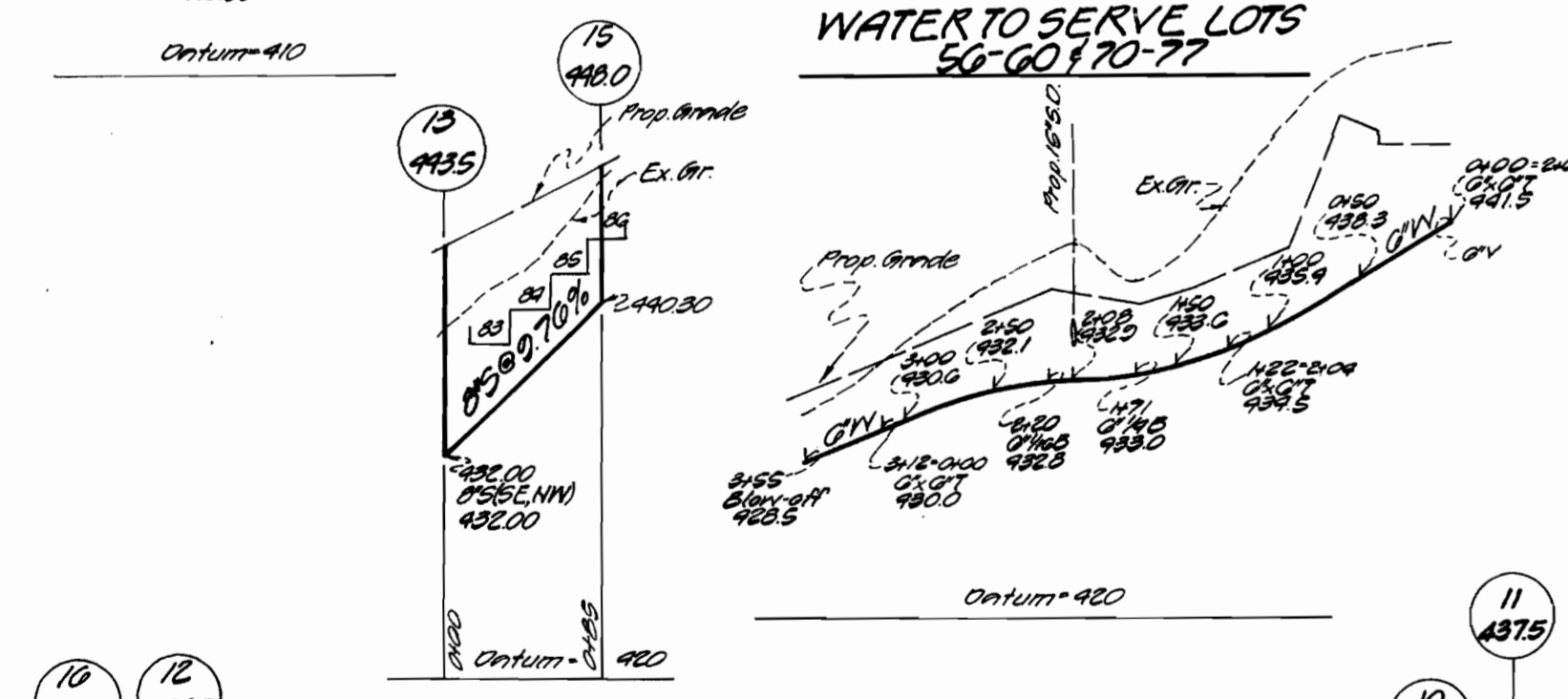
WATER TO SERVE LOTS 61-69

WATER TO SERVE LOTS 101-105

WATER TO SERVE LOTS 34-38



WATER TO SERVE LOTS 50-60/70-77



PROFILE SCALE
Horiz. 1" = 100'
Vert. 1" = 10'

CONTRACT NO. 2563-D-WMS
VILLAGE OF LONGREACH
SECTION 1, AREA 1, PARCEL E
WATER AND SEWER EXTENSIONS
MS M... 10/22/73

ENGINEERS PLANNERS SURVEYORS
JOHNSON MCCORD & THOMPSON P.A.
1620 ELTON ROAD
SILVER SPRING, MARYLAND 20903

DEPARTMENT OF PUBLIC WORKS
HOWARD COUNTY, MARYLAND
1-31-77
W.O. Falbert
CHIEF-BUREAU OF WATER AND SEWER

CONTRACT NO. 2563-D-WMS

PROFILES OF
WATER & SEWER MAINS

PARCEL E
VILLAGE OF LONGREACH
SECTION 1, AREA 1
6TH ELECTION DISTRICT HOWARD COUNTY, MARYLAND

DRAWING NO. 2 OF 2 SCALE AS SHOWN

WS 569 .wsg/2

susp

susp

susp