

PROJECT NO. WP 8071

U.S. ROUTE 29 WATER MAINS

HOWARD COUNTY, MARYLAND

DEPARTMENT OF PUBLIC WORKS

QUANTITIES	
50" Water	5000 LF
30" Lock Jt. Pipe Used (SP-5)	
8" C.I.P. Used Griffin	
Diary F.B. # 5525	
Stakeout F.B. # 5521	



*Kenneth A. McLeod*

U.S. Route #29 - Water Main  
Project No. WP 8071  
Contract No. 566-W

WHITMAN, REQUARDT & ASSOCIATES ENGINEERS 1304 ST. PAUL ST. BALTIMORE, MARYLAND	DEPARTMENT OF PUBLIC WORKS HOWARD COUNTY, MARYLAND DATE <u>10-16-73</u> <i>W.O. Lat</i> CHIEF-BUREAU OF ENGINEERING	CONTRACT NO. <u>566-W</u>	LOCATION PLAN	U.S. ROUTE 29 WATER MAIN TALBOTT SPRINGS TO RIVER MEADOW DRIVE	DRAWING NO. <u>1</u> OF <u>5</u>	SCALE <u>1"=2000'</u>
---	---	---------------------------	---------------	---	----------------------------------	-----------------------

W. O. 6800-2

NOV 13, 1974

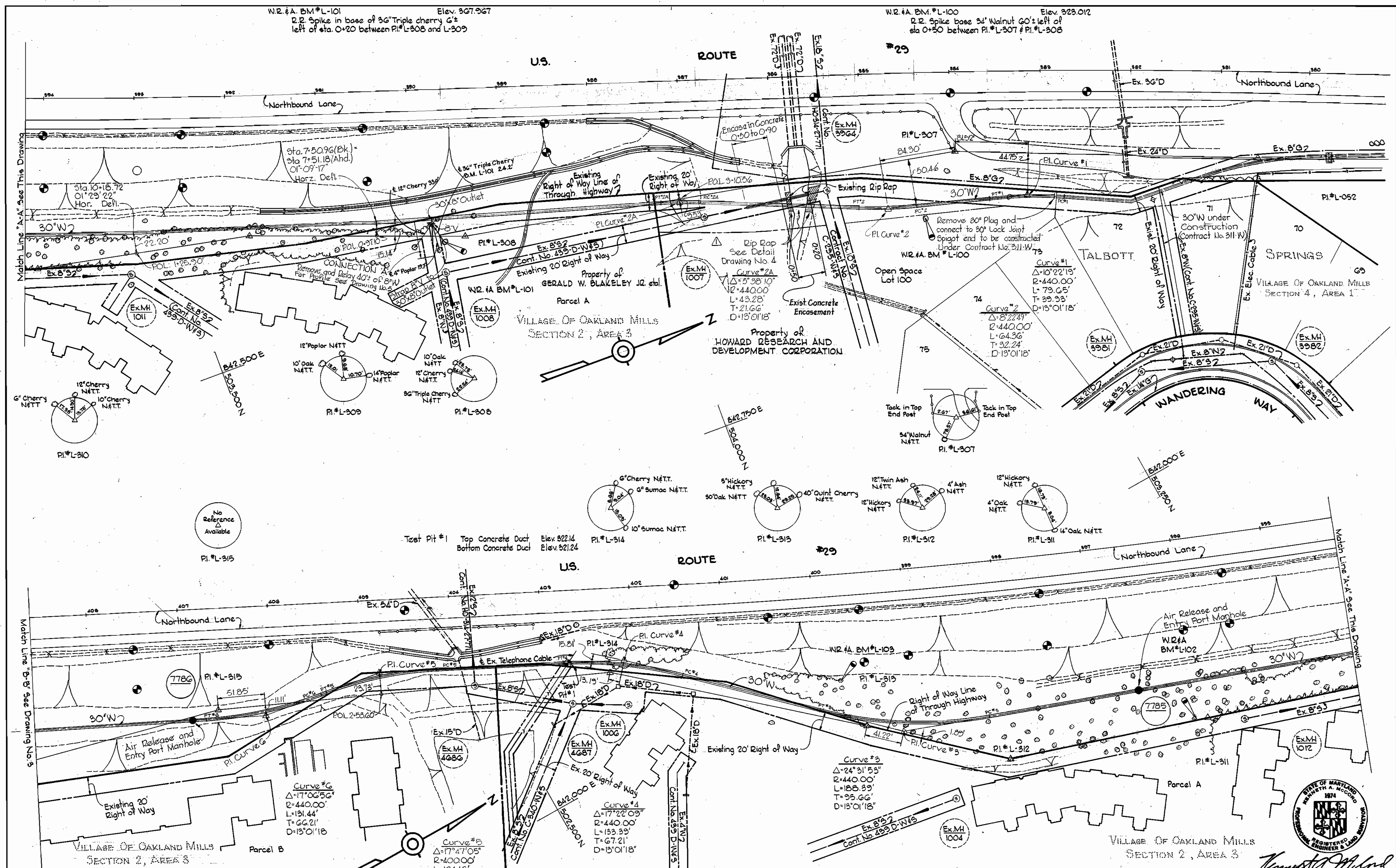
AS BUILT

WS 566-W/1

BRUNING 44-510 1832

F.B.#





W.R.#A. BM#L-104  
 Elev. 305.362  
 R.R. Spike in base of 4" E pole #358691 left of  
 sta. 1+60 between PI#L-315 and PI#L-316

W.R.#A. BM#L-109  
 Elev. 378.796  
 R.R. Spike in base of 14" Hickory 40'± right of  
 sta. 0+45± between PI#L-315 and PI#L-314

W.R.#A. BM#L-102  
 Elev. 404.617  
 R.R. Spike in base of 14" Oak 5± right of sta.  
 0+15 between PI#L-311 and PI#L-312

*Kenneth A. McLeod*  
 U.S. Route 29 - Water Main  
 Project No. WP 8071  
 Contract No. 566-W

**WHITMAN, REQUARDT & ASSOCIATES**  
 ENGINEERS  
 1304 ST. PAUL ST.  
 BALTIMORE, MARYLAND

**DEPARTMENT OF PUBLIC WORKS**  
 HOWARD COUNTY, MARYLAND  
 10-76-73  
*W. O. Albert*  
 CHIEF BUREAU OF ENGINEERING

**CONTRACT NO. 566-W**

**PLAN OF  
 WATER MAINS**

**U.S. ROUTE 29 WATER MAIN  
 TALBOTT SPRINGS TO RIVER MEADOW DRIVE**

**DRAWING  
 NO. 2  
 OF 5**

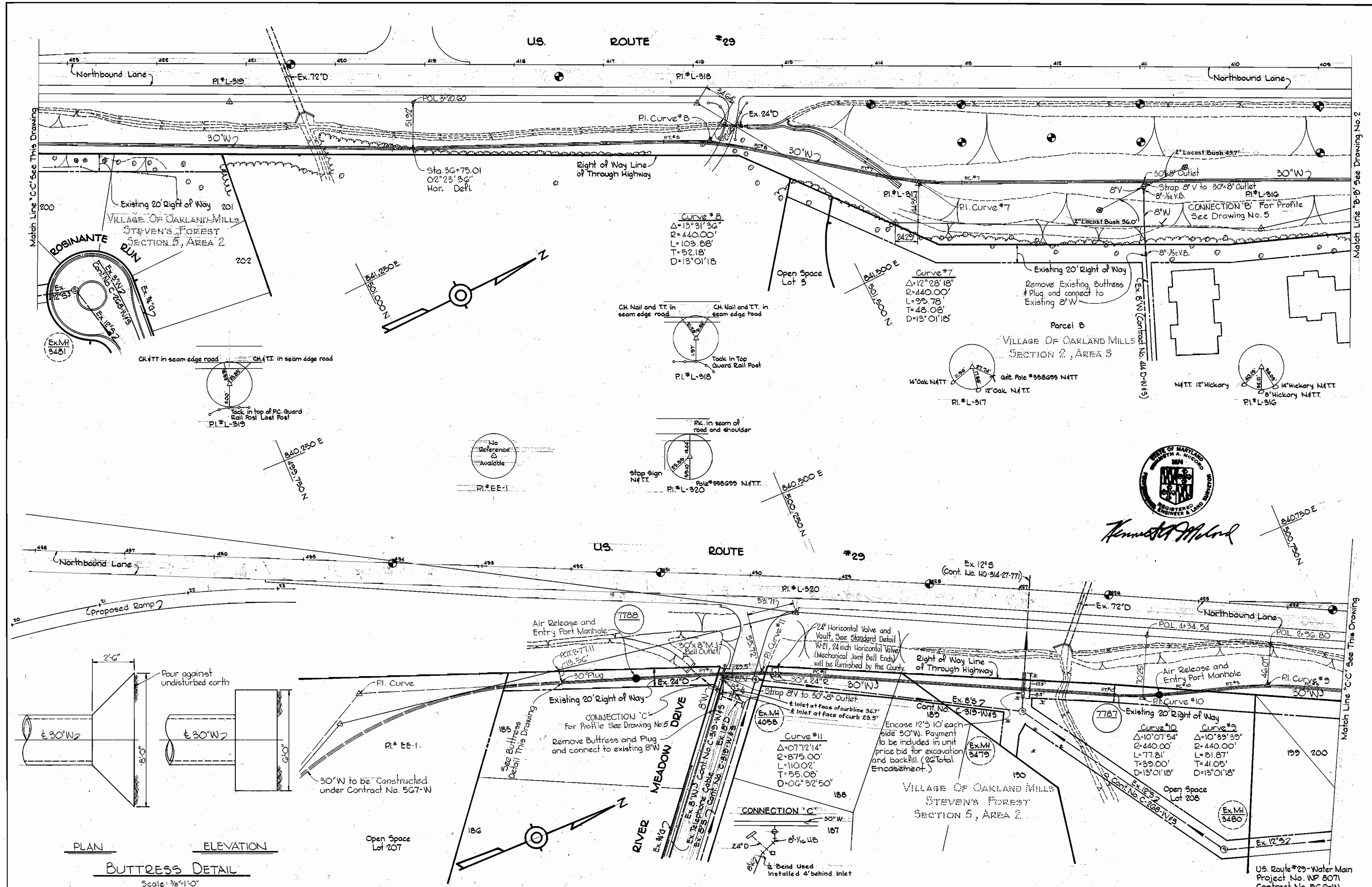
**SCALE  
 1" = 50'**

FB# 4372, 5093, 4430 NOV. 13, 1974  
 AS BUILT

ws 566-w/2

BRUNING 44-510 1039Z





*Kenneth M. Melrod*

WHITMAN, REQUARDT & ASSOCIATES ENGINEERS & ARCHITECTS 1304 ST. PAUL ST. BALTIMORE, MARYLAND	DEPARTMENT OF PUBLIC WORKS HOWARD COUNTY, MARYLAND 10-16-73 <i>W. O. Gilbert</i> CHIEF BUREAU OF ENGINEERING	CONTRACT NO. 566-W	PLAN OF WATER MAINS	U.S. ROUTE 29 WATER MAIN TALBOTT SPRINGS TO RIVER MEADOW DRIVE	DRAWING NO. 3 OF 5 SCALE 1" = 50' 801-481 800-481 489-481
--	--	--------------------	------------------------	---	---

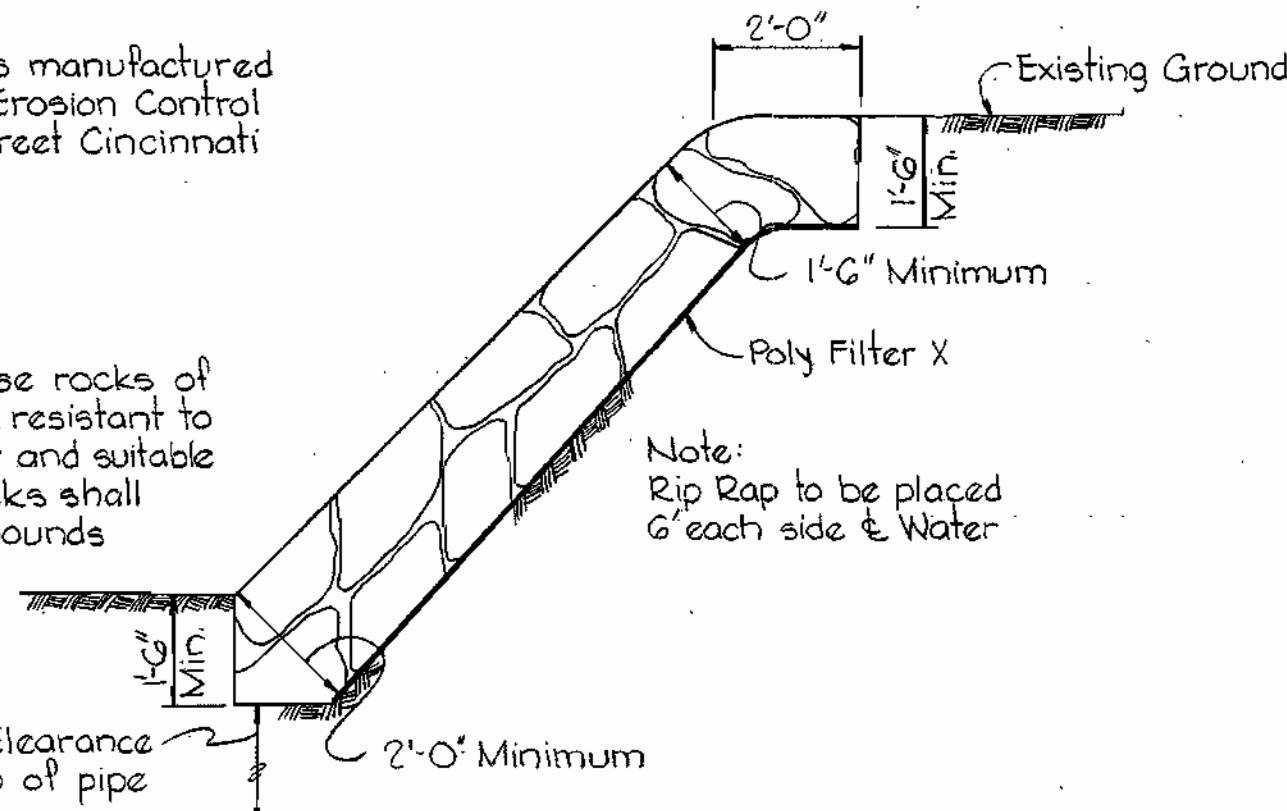
WS 566-w/3

BRUNING 44-510 16392

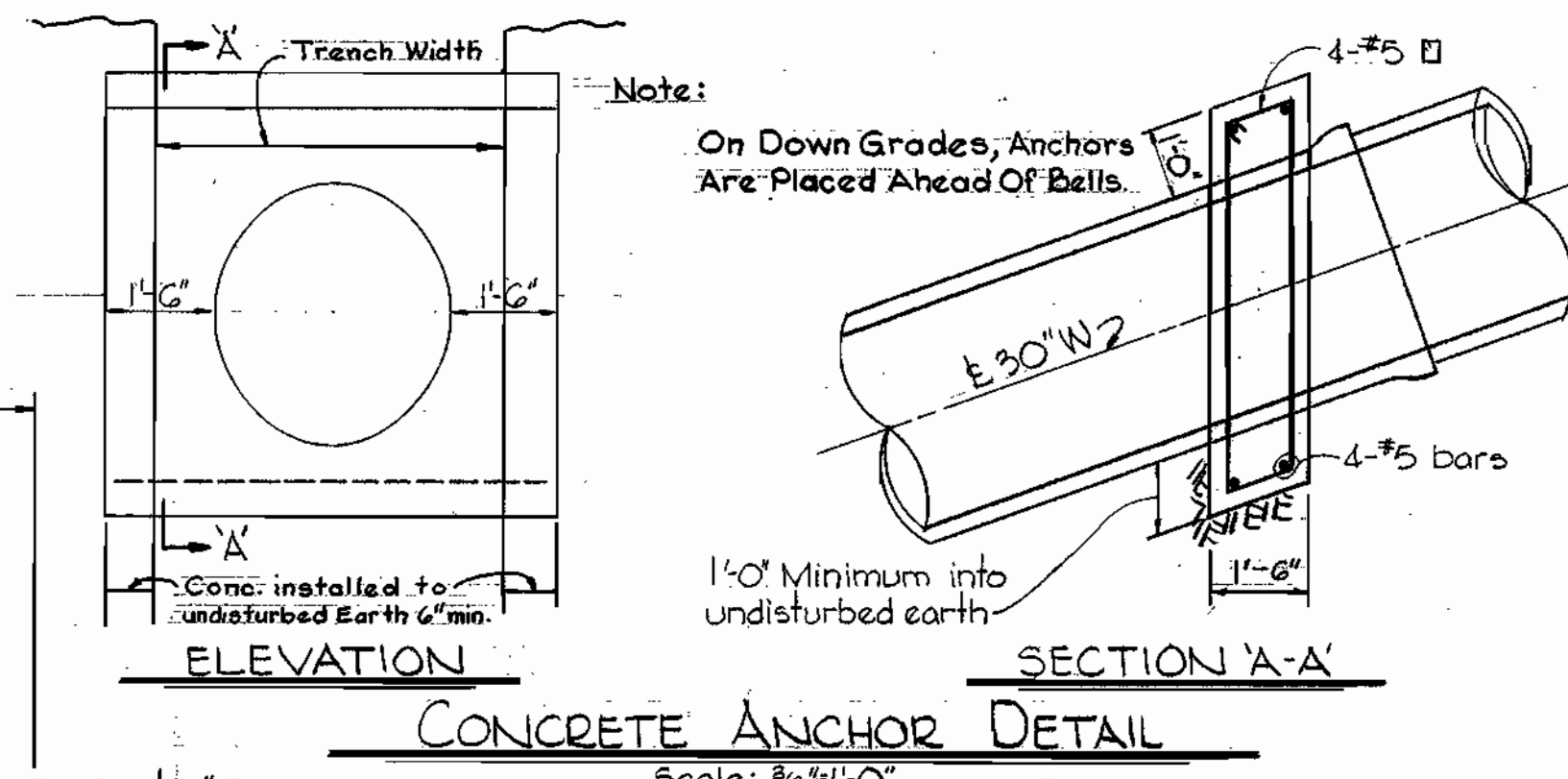
Note:  
Poly Filter X shall be as manufactured by Carthage Mills Inc. Erosion Control Division, 124 W. 66<sup>th</sup> Street Cincinnati Ohio or approved equal.

Rip Rap to consist of dense rocks of random shapes and sizes, resistant to the action of air and water and suitable for bank protection. All rocks shall weigh a minimum of 150 pounds

Maintain 1' minimum clearance between Rip Rap and top of pipe



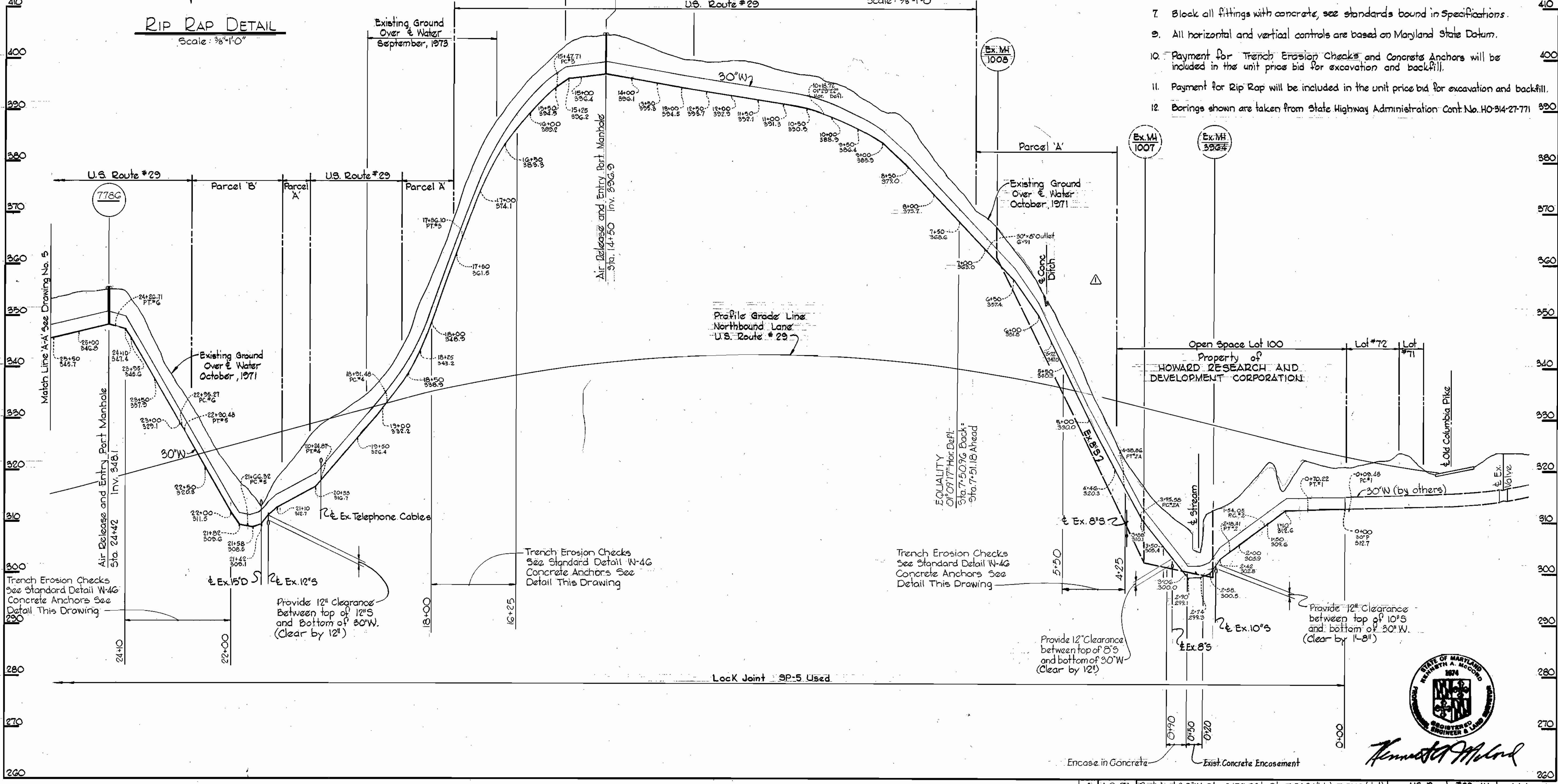
**RIP RAP DETAIL**  
Scale: 3/8"=1'-0"



**CONCRETE ANCHOR DETAIL**  
Scale: 3/8"=1'-0"

**GENERAL NOTES**

1. Approximate location of existing mains are shown. The Contractor shall take all necessary precautions to protect existing mains and services and maintain uninterrupted supply. Any damage incurred shall be repaired immediately.
2. All pipe elevations shown are invert elevations.
3. The Contractor shall locate existing utilities a minimum of two weeks in advance of construction operations in vicinity of utilities.
4. For all standard details see standards bound in Specifications.
5. Clear all utilities by a minimum of 6', clear all poles by 2'-0' minimum or tunnel as required.
6. All water mains to have a minimum of 3 1/2' cover unless otherwise noted.
7. Block all fittings with concrete, see standards bound in Specifications.
8. All horizontal and vertical controls are based on Maryland State Datum.
9. Payment for Trench Erosion Checks and Concrete Anchors will be included in the unit price bid for excavation and backfill.
10. Payment for Rip Rap will be included in the unit price bid for excavation and backfill.
11. Borings shown are taken from State Highway Administration Cont. No. HO-314-27-771



*Kenneth A. Molod*

<b>WHITMAN, REQUARDT &amp; ASSOCIATES</b> ENGINEERS 1304 ST. PAUL ST. BALTIMORE, MARYLAND	<b>DEPARTMENT OF PUBLIC WORKS</b> HOWARD COUNTY, MARYLAND DATE: 10-16-73 <i>W. O. Gilbert</i> CHIEF-BUREAU OF ENGINEERING	<b>CONTRACT NO. 566-W</b>	<b>PROFILES OF WATER MAINS</b>	<b>U.S. ROUTE 29 WATER MAIN</b> TALBOTT SPRINGS TO RIVER MEADOW DRIVE	No. 4 OF 5	SCALE H: 1"=100' V: 1"=10'
					No. 4 OF 5	SCALE H: 1"=100' V: 1"=10'

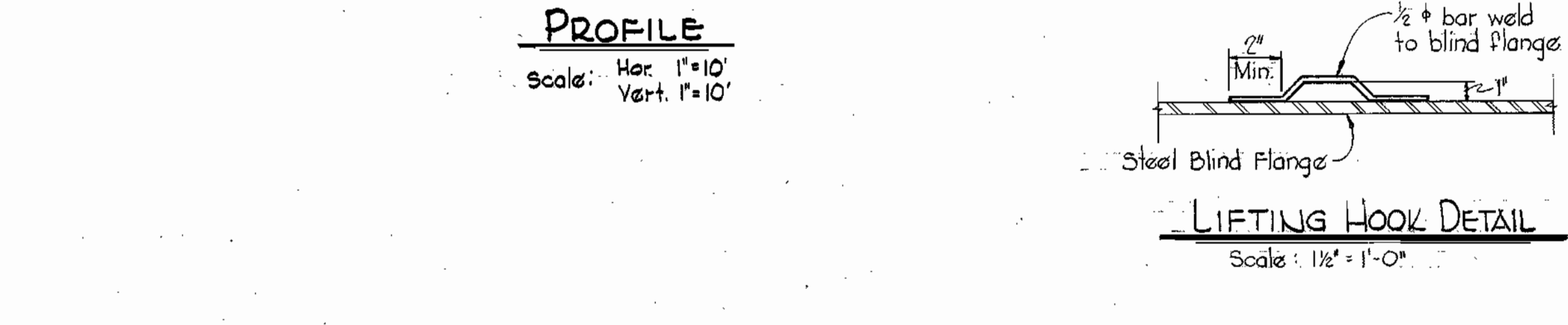
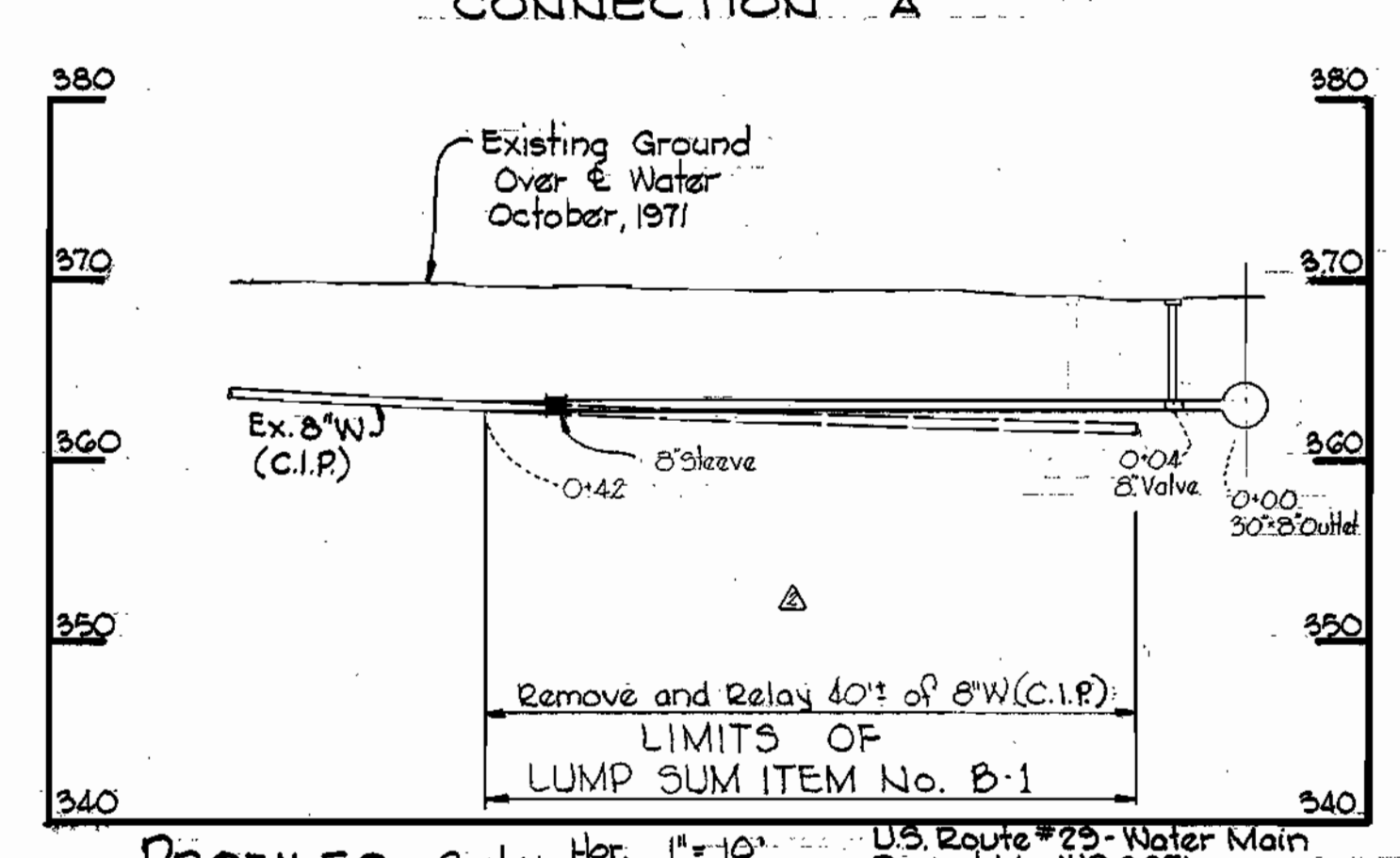
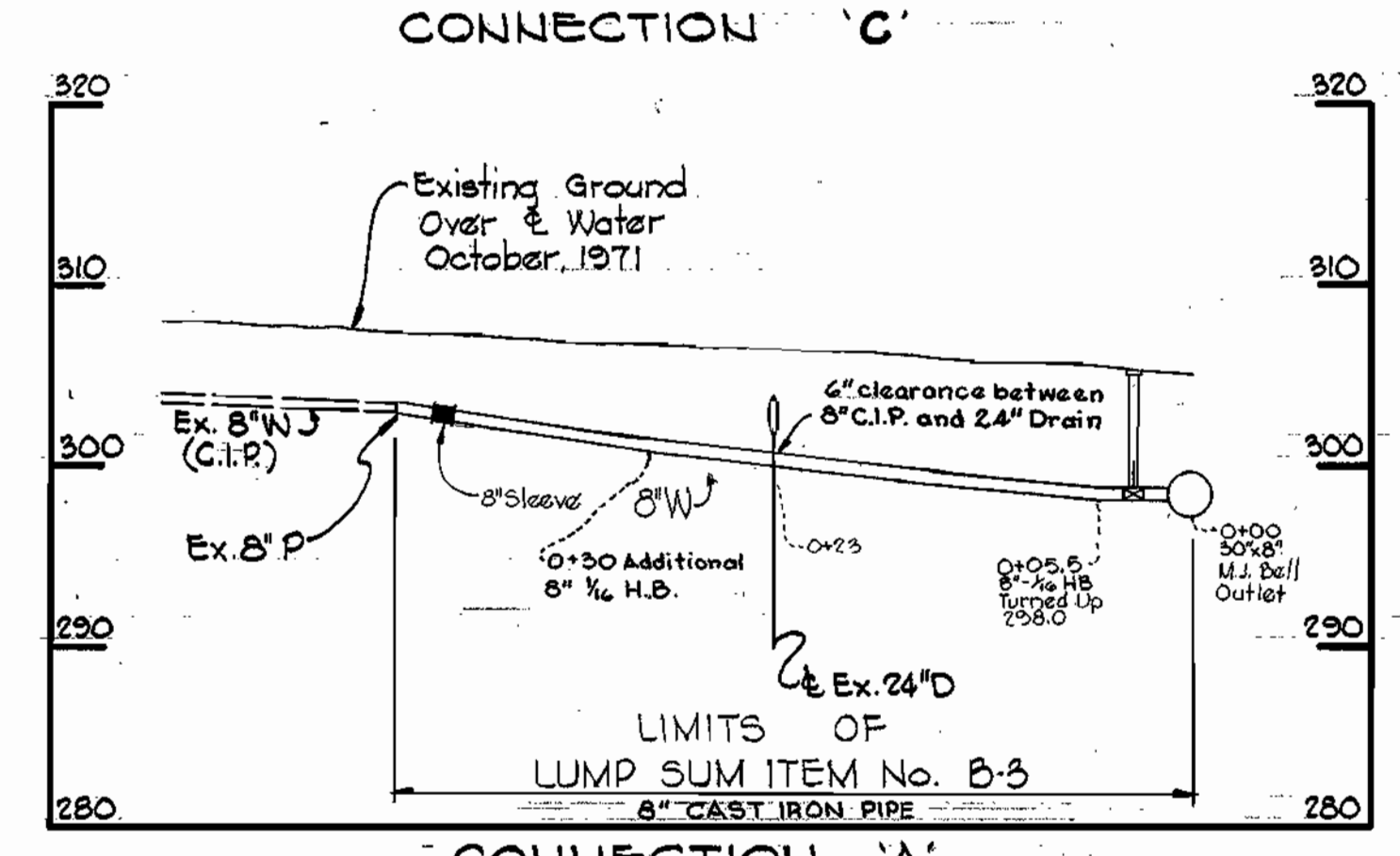
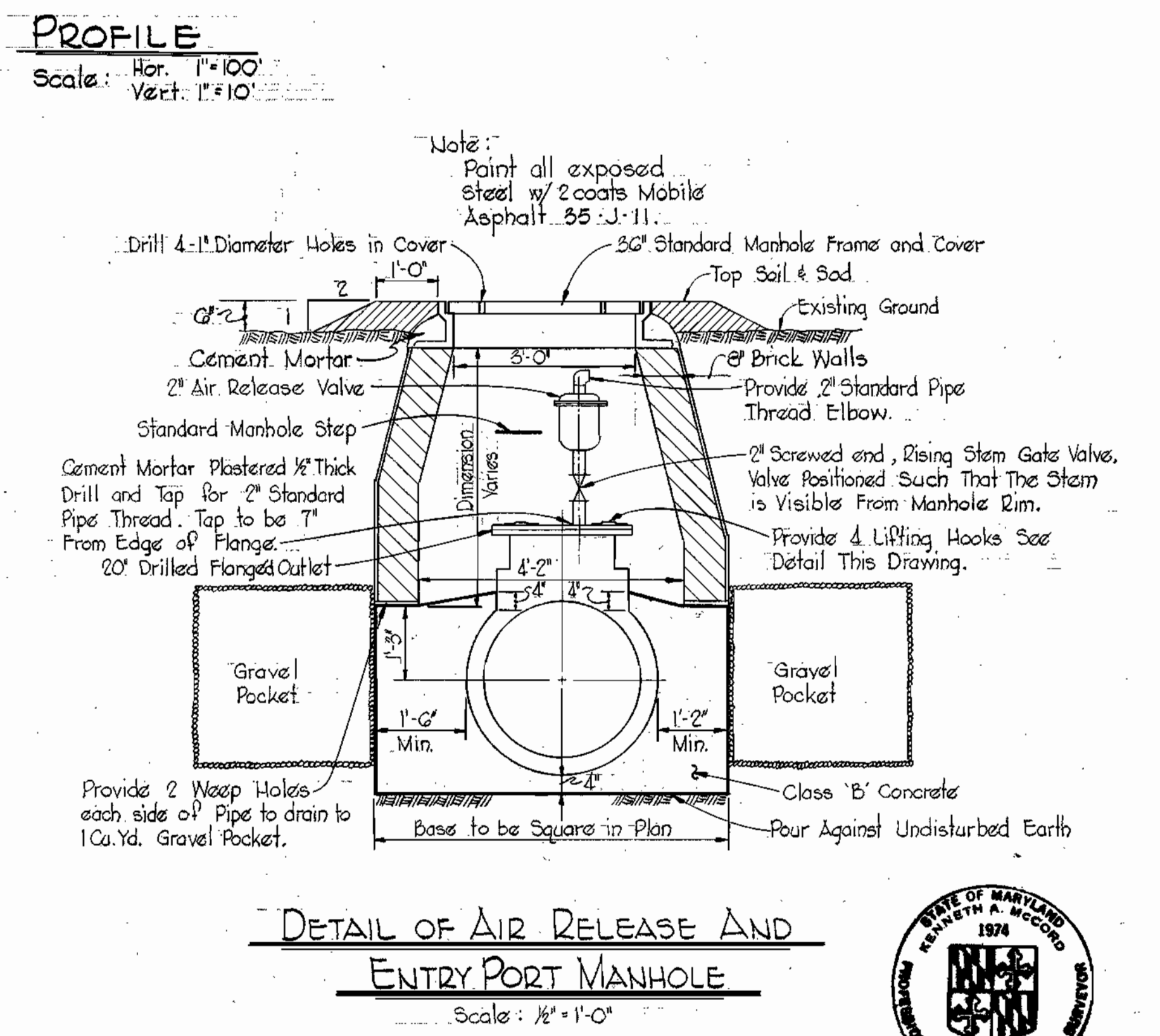
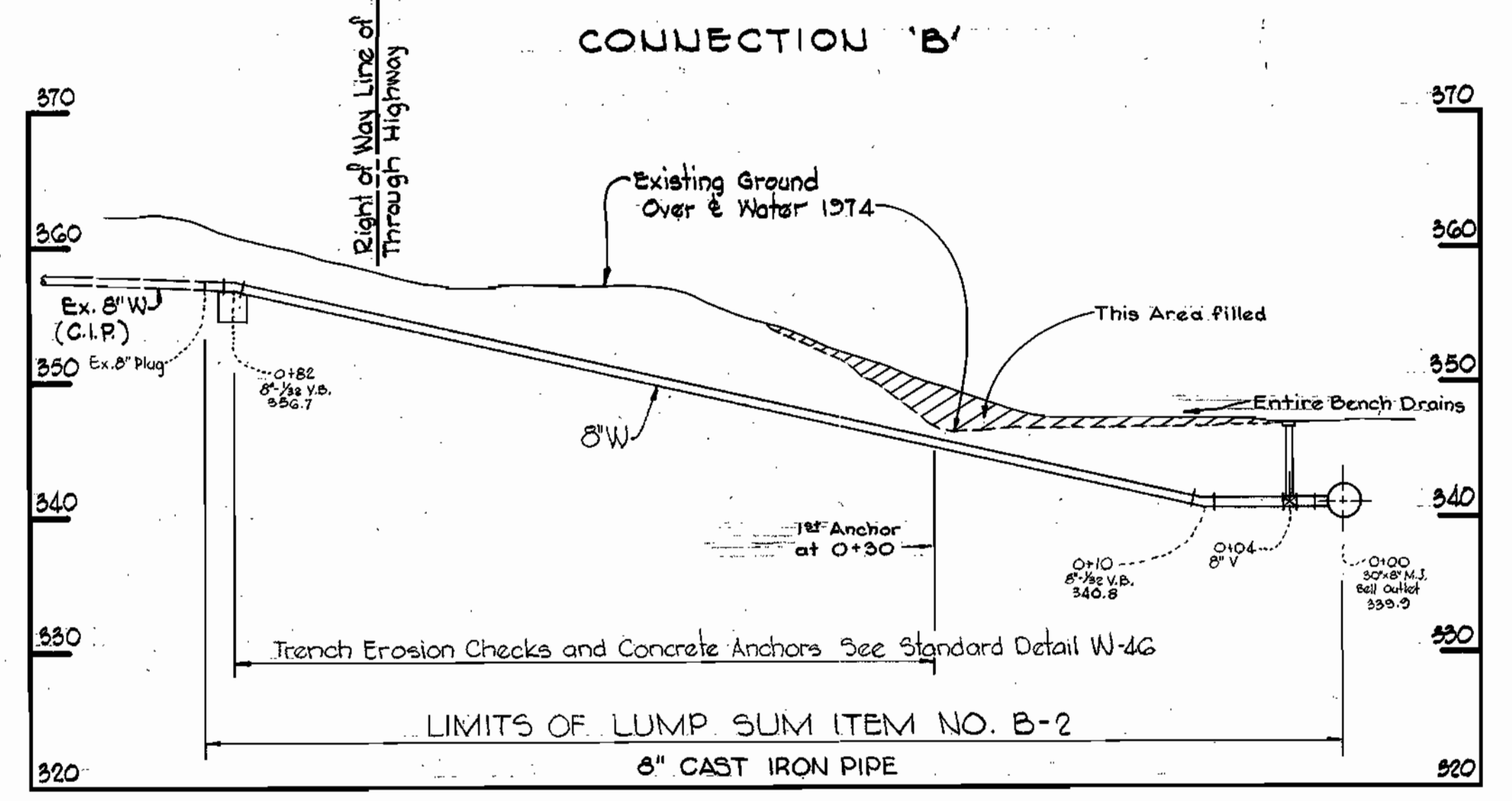
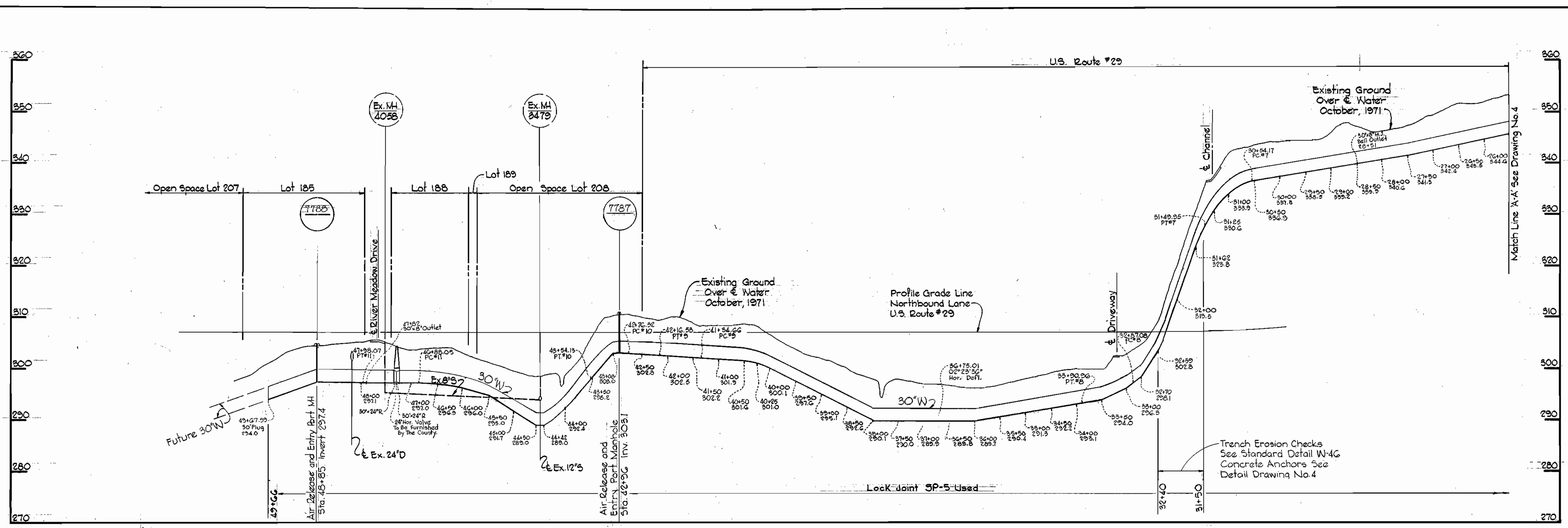
W. O. 6800-2

NOV. 13, 1974  
AS BUILT

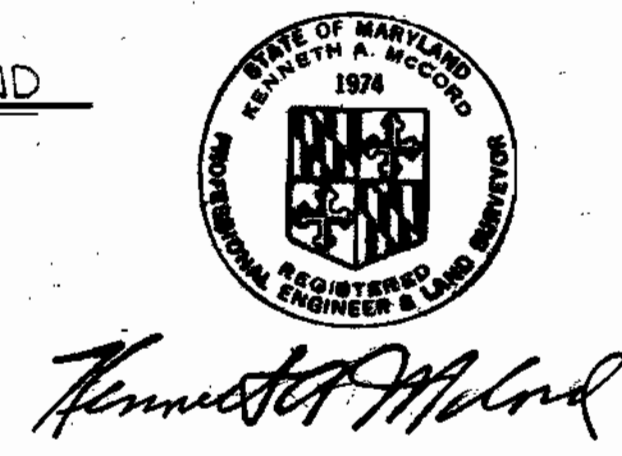
WS 566-W/A

BRUNING 44-510 16392





4-9-74	Revised CONNECTION 'A'
No.	Date



WHITMAN, REQUARDT & ASSOCIATES  
ENGINEERS  
1304 ST. PAUL ST.  
BALTIMORE, MARYLAND

DEPARTMENT OF PUBLIC WORKS  
HOWARD COUNTY, MARYLAND  
10-16-73  
W. O. Polbert  
CHIEF-BUREAU OF ENGINEERING

CONTRACT NO. 566-W

PROFILES AND DETAILS OF  
WATER MAINS

U.S. ROUTE 29 WATER MAIN  
TALBOTT SPRINGS TO RIVER MEADOW DRIVE

DRAWING NO. 5 OF 5  
SCALE AS SHOWN

WS 566-w/s

BRUNING 44-510 18392