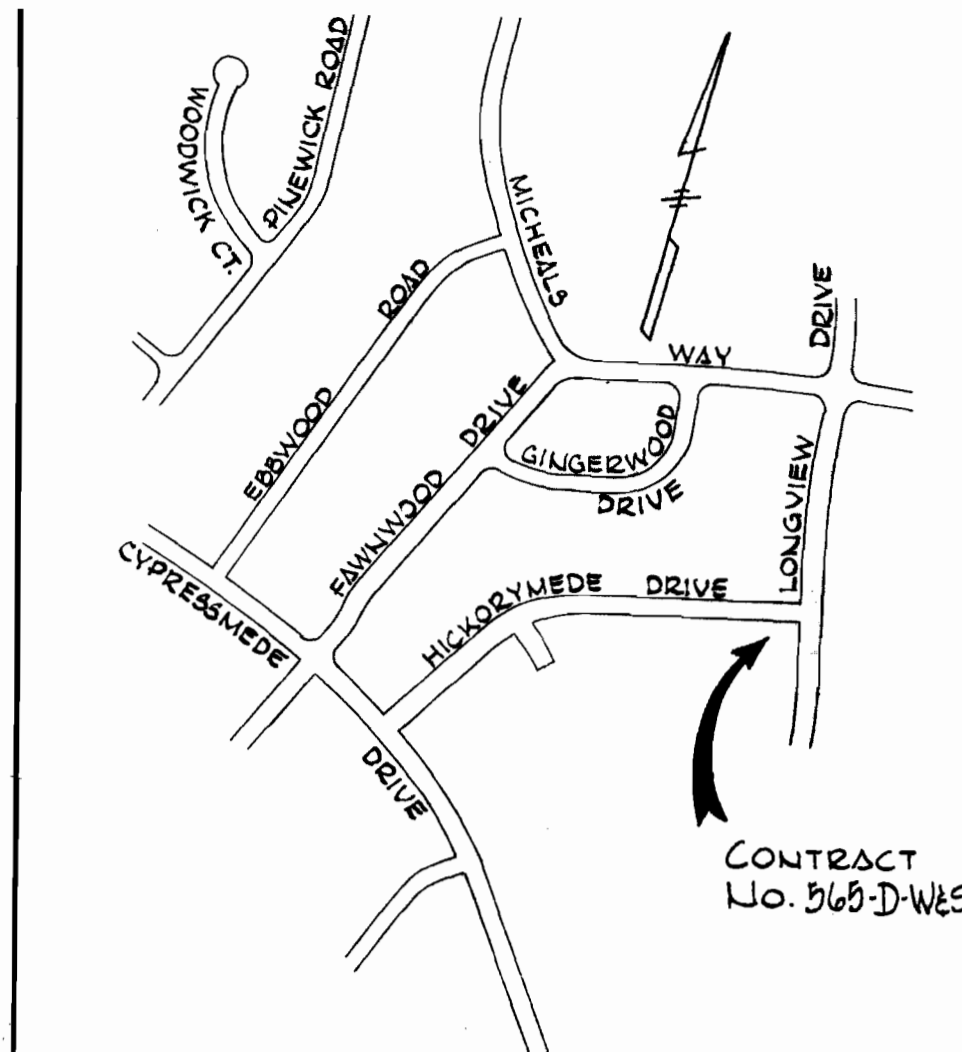
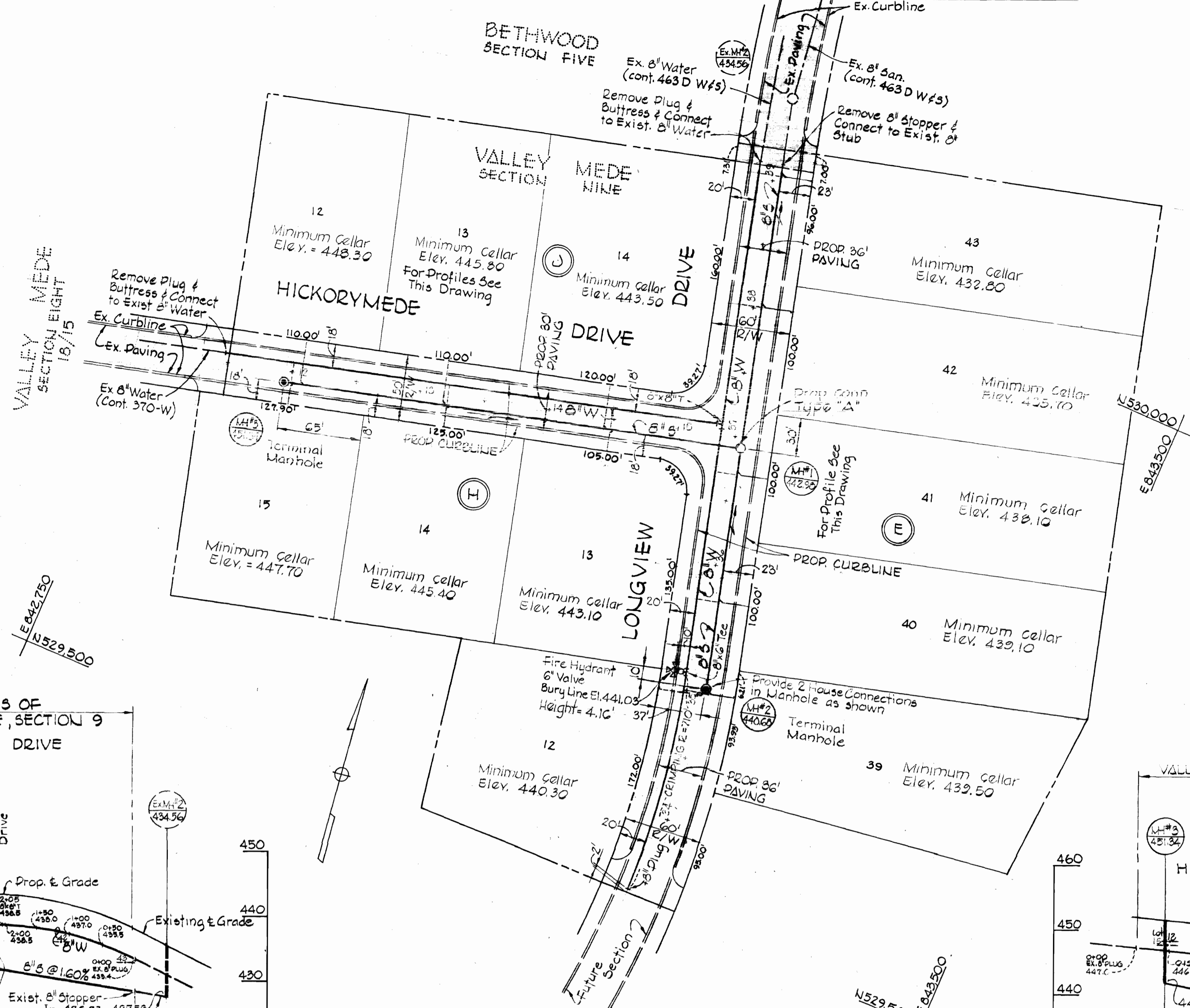


GENERAL NOTES

- 1) Approximate location of existing mains are shown. The contractor shall take all necessary precautions to protect existing mains and services and maintain uninterrupted supply. Any damage incurred shall be repaired immediately.
- 2) All pipe elevations shown are invert (I) elevations.
- 3) The contractor shall locate existing utilities a minimum of two weeks in advance of construction operations in vicinity of utilities.
- 4) For all standard details see standards bound in specifications.
- 5) All water mains shall have a minimum of 3 1/2' cover.
- 6) Block all fittings with concrete, see standards bound in specifications.
- 7) Bury line elevations on fire hydrants shall be set to the elevations shown on the drawings.
- 8) Cost of strapping fire hydrants and valves to be included in the unit price bid for furnishing and installing fire hydrants.
- 9) All fire hydrants shall be strapped to the tee and shall be buttressed with concrete in accordance with standard details.
- 10) Clear all utilities by a minimum of 6", clear all poles by 2'-0" minimum or tunnel as required.
- 11) All manholes shall be 4'-0" inside diameter.
- 12) The contractor shall provide a joint within 2'-0" of exterior manhole walls.
- 13) All vertical and horizontal controls are based on Maryland State Datum.



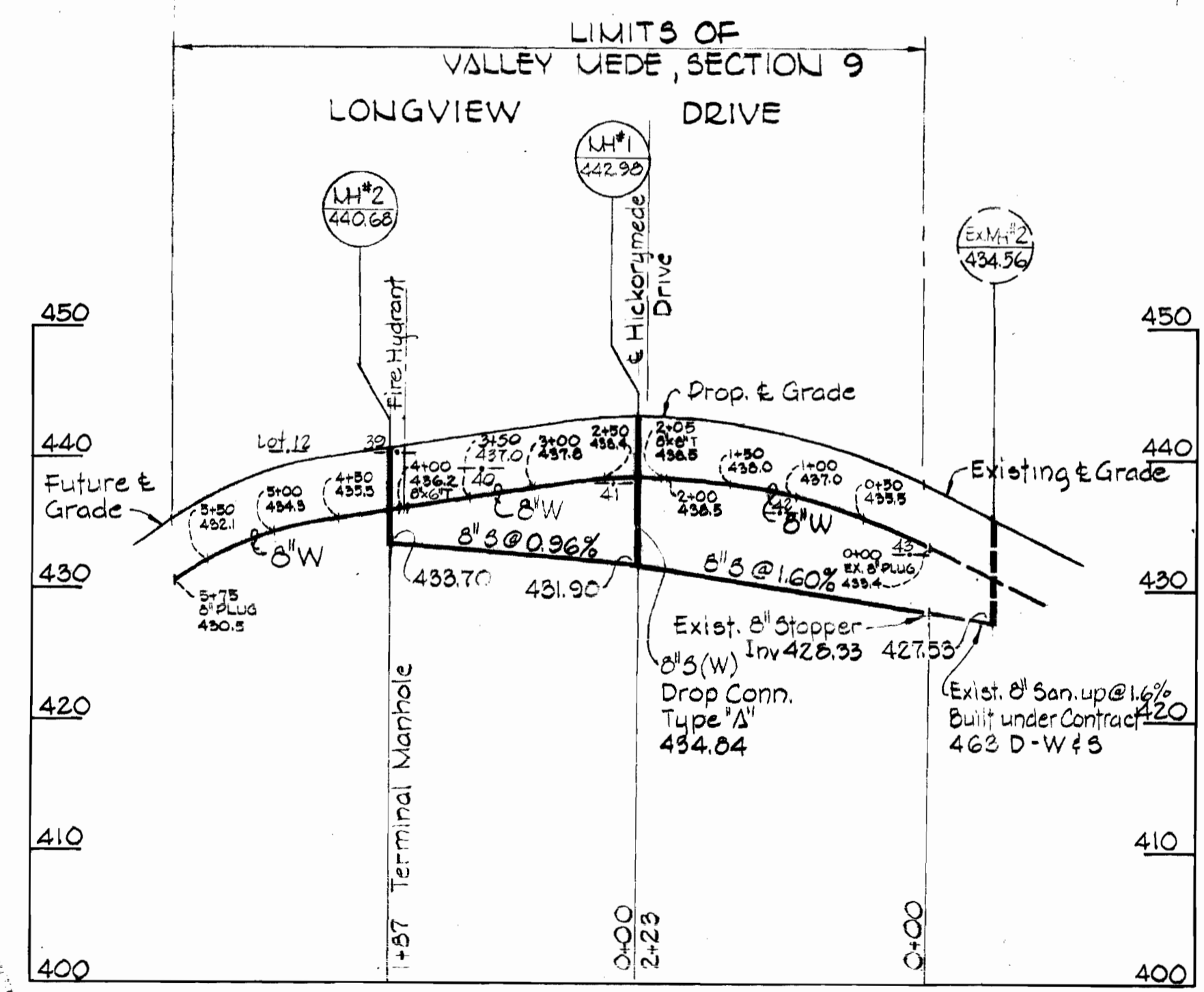
VICINITY MAP
Scale: 1" = 600'

BENCH MARKS

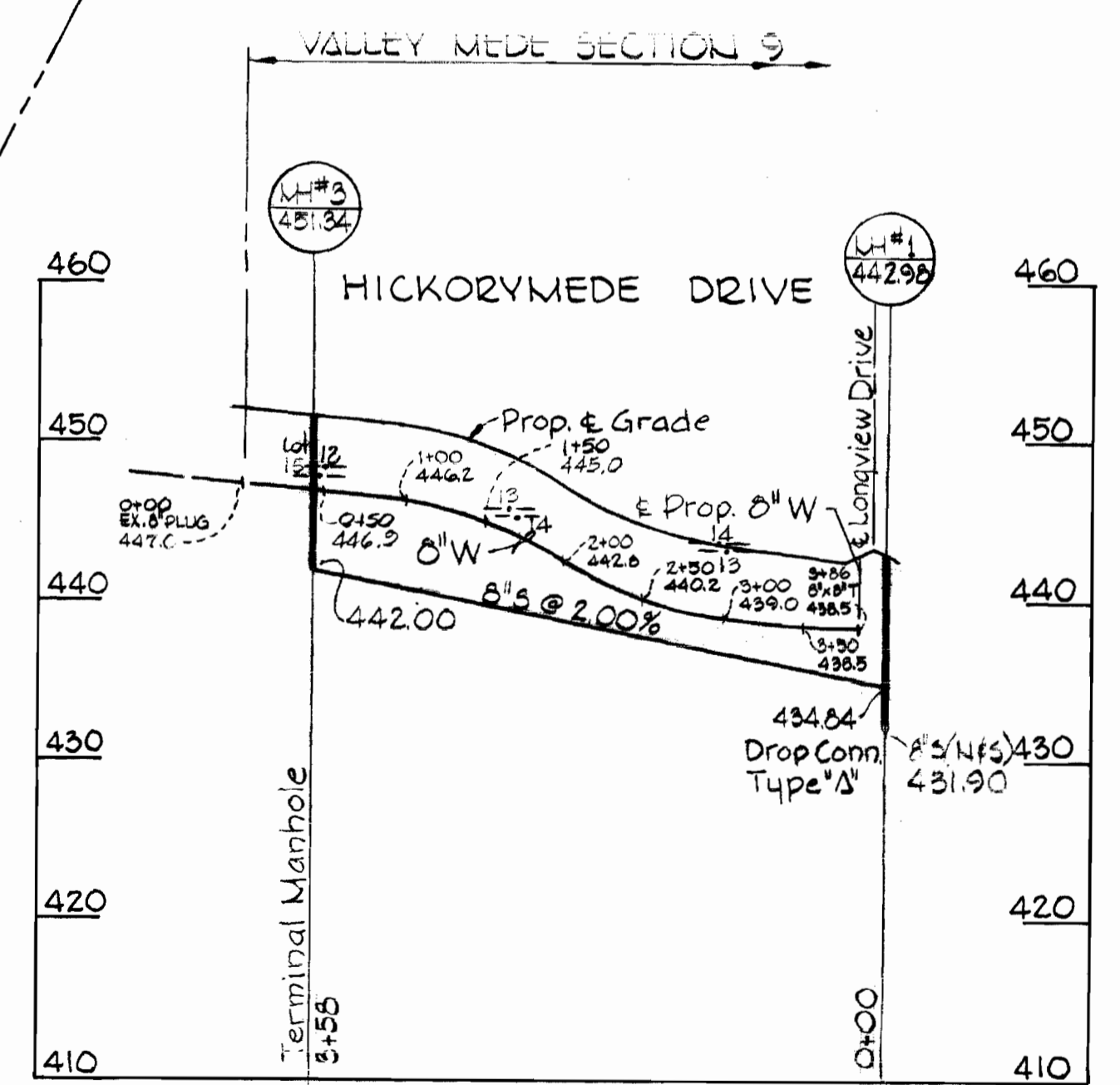
- BM "Hickory" El. 439.02
Road Side Fire Hydrant Bonnett Bolt Hickorymeade Dr. Across from Lots 35 & 36 (Valley Mede, Sec. 6)
- BM "Howie" El. 446.18
3 Nails in G of E #46262B Rear Lot 20 Hickorymeade Court & Hickorymeade Drive (Valley Mede Sec. 6)

QUANTITIES

8" Sewer	770'
8" Water	960'
6" Fire Hydrant	1

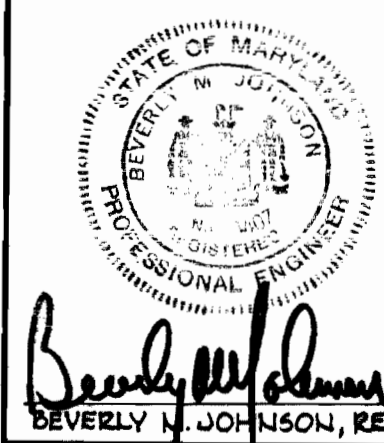


PROFILE
Scale Hor. = 1" = 10'
VERT. = 1" = 10'



PROFILE
Scale Hor. = 1" = 10'
VERT. = 1" = 10'

PLAN
Scale 1" = 50'



Beverly N. Johnson 7-23-73
BEVERLY N. JOHNSON, REG. NO. 3407

PURDUM & JESCHKE
ENGINEERS
1023 N. CALVERT ST.
BALTIMORE, MARYLAND

DEPARTMENT OF PUBLIC WORKS
HOWARD COUNTY, MARYLAND
8-6-73 DATE
W.D. P. [Signature]
CHIEF - BUREAU OF ENGINEERING

CONTRACT NO. 565-D-W85

PLAN & PROFILE
WATER AND SEWER MAINS

VALLEY MEDE - SECTION 9
SECOND ELECTION DISTRICT

DRAWING NO. 1 OF 1
AS SHOWN

1/5/74 595 SA