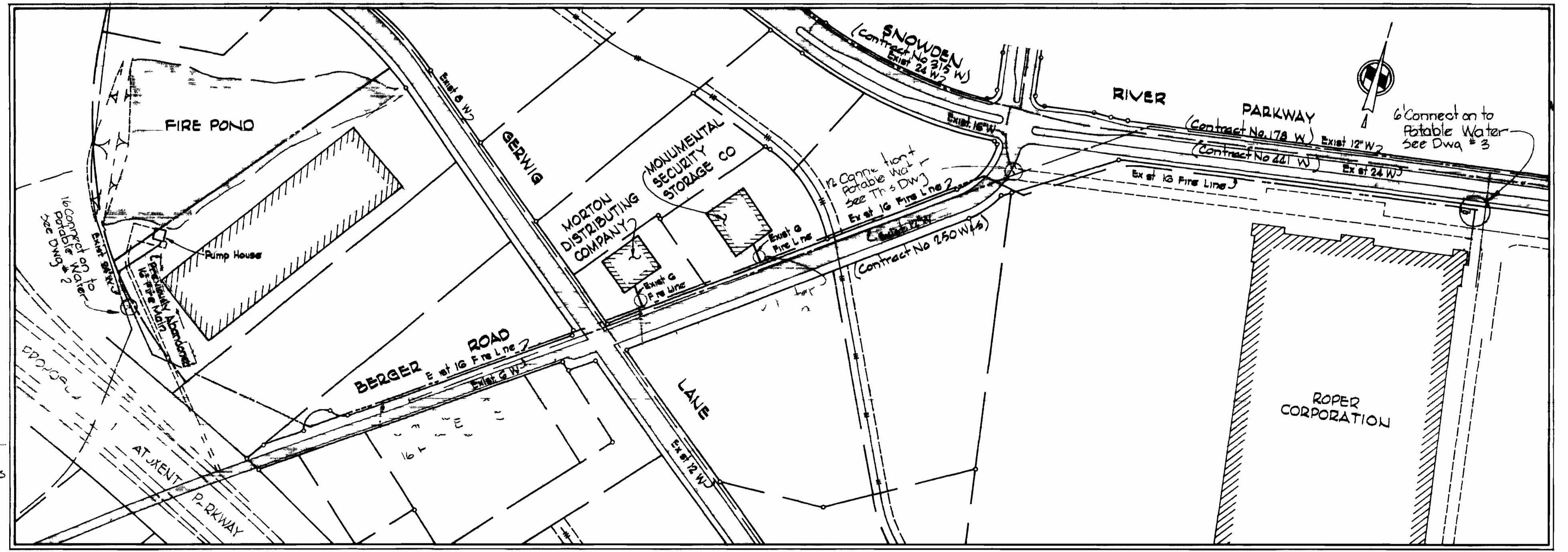


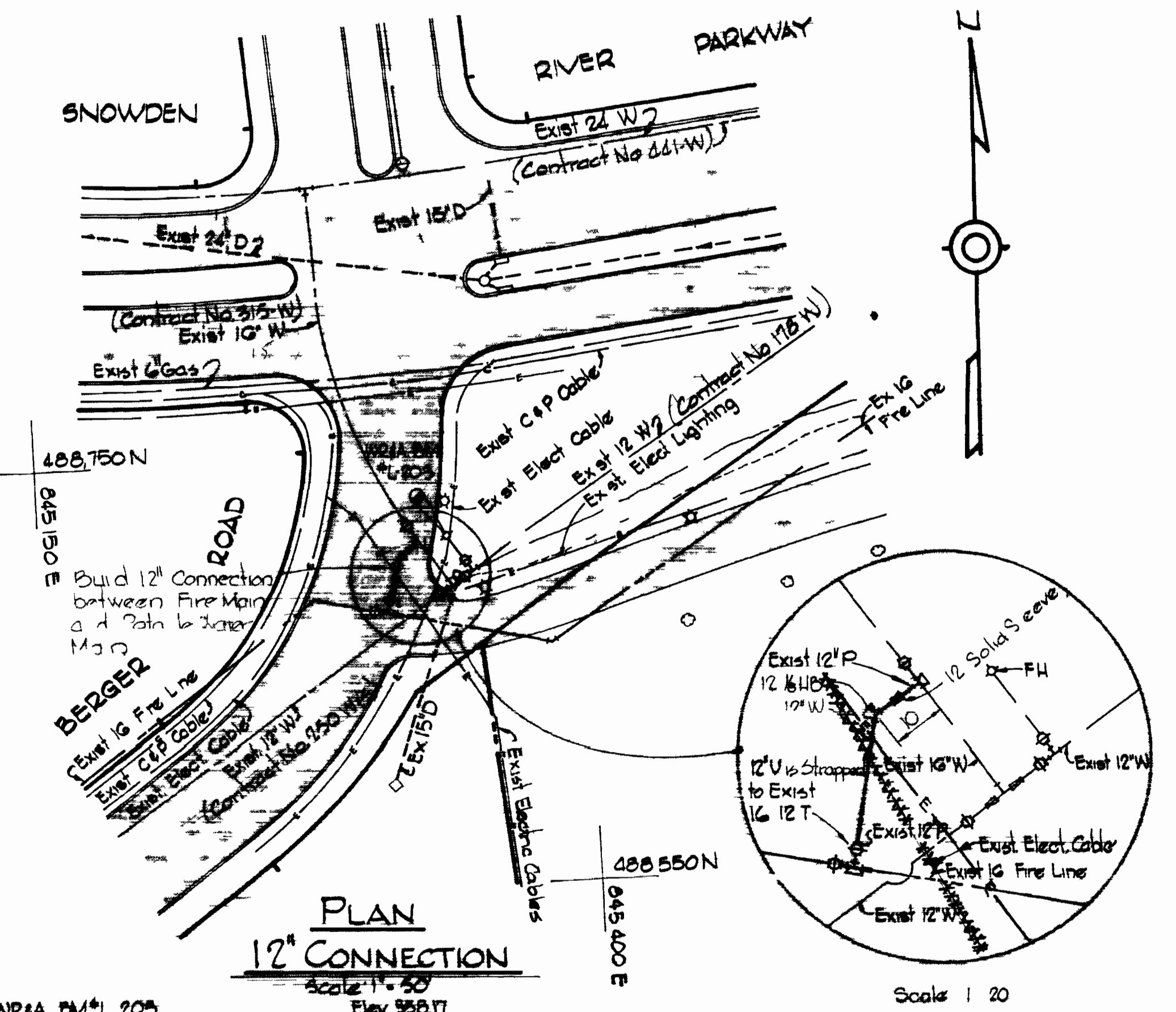
SECTION 'A-A'
SPLIT BEAM BUTTRESS
 @ 16" CONNECTION
 Scale 1/4" = 1'-0"



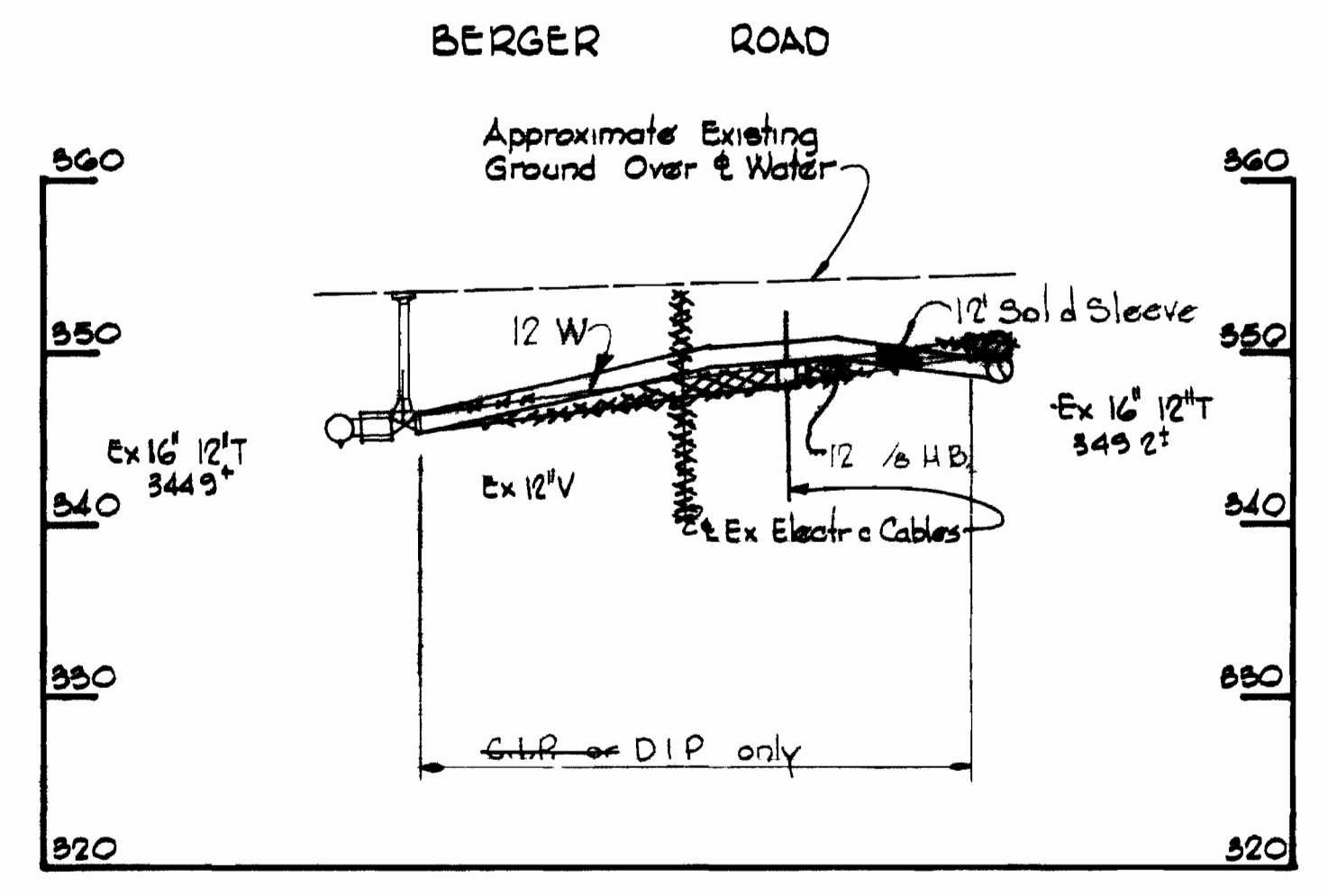
LOCATION PLAN
 Scale 1" = 200'

GENERAL NOTES

1. Approximate location of existing mains are shown. The Contractor shall take all necessary precautions to protect existing mains and services and maintain uninterrupted supply. Any damage incurred shall be repaired immediately.
2. All pipe elevations shown are invert elevations.
3. The Contractor shall locate existing utilities a minimum of two weeks in advance of construction operations in vicinity of utilities.
4. The Contractor shall notify the following utilities or agencies at least five days before starting work shown on these plans:
 Baltimore Gas and Electric Company
 Underground Electric Distribution Engineering - 234 5631
 Underground Gas Distribution Engineering - 559 0100
 Chesapeake and Potomac Telephone Company - 727 9916
 Miss Utilities 333 3648
5. All horizontal and vertical controls are based on Maryland State Datum.
6. For all standard details see standards bound in specifications.
7. Clear all utilities by a minimum of 6'.
8. All water mains shall have a minimum of 3 1/2' cover.
9. Block all fittings with concrete see standards bound in specifications.



PLAN 12" CONNECTION
 Scale 1" = 50'



PROFILE 12" CONNECTION
 Scale 1/4" = 1'-0"

NR&A BM#L 205 Elev 958.17
 Roadside Plunge bolt on FH southeast corner
 Snowden River Parkway and Berger Road

WHITMAN REQUARDT & ASSOCIATES
 ENGINEERS
 1304 ST. PAUL ST
 BALTIMORE MARYLAND

DEPARTMENT OF PUBLIC WORKS
 HOWARD COUNTY MARYLAND
 3-27-78
 DIRECTOR OF PUBLIC WORKS - DATE

CONTRACT NO 564-D-W

PLAN, PROFILE AND DETAIL OF WATER MAINS

EGU FIRE MAIN COLUMBIA ELECTION DISTRICT NO 6

DRAWING NO 1 OF 3
SCALE AS SHOWN

FE#4544, 4154-1 5423 & 6423
 SEPTEMBER 26 1977

W O# 2474

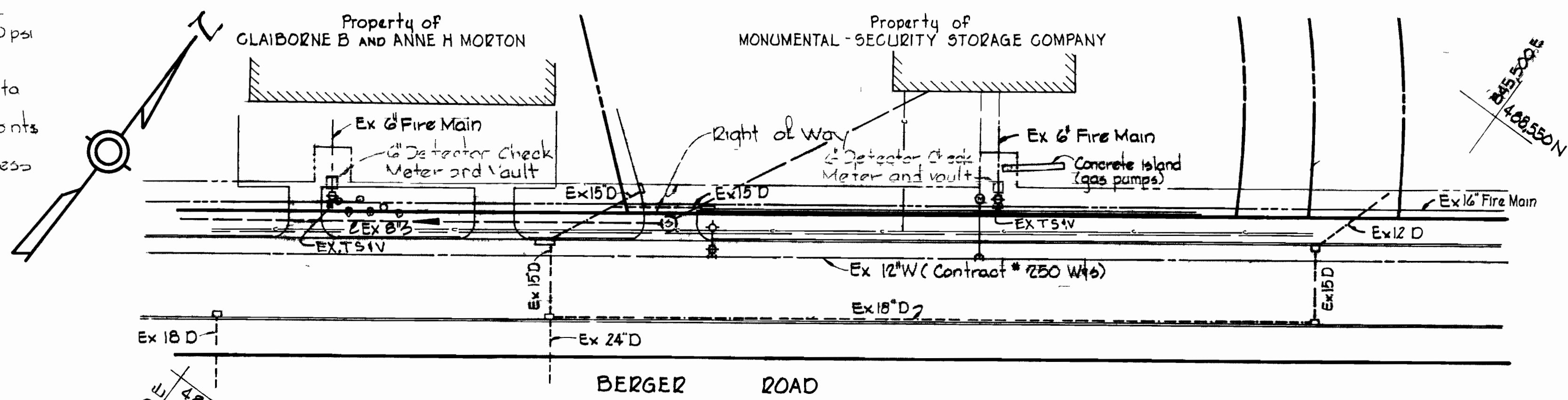
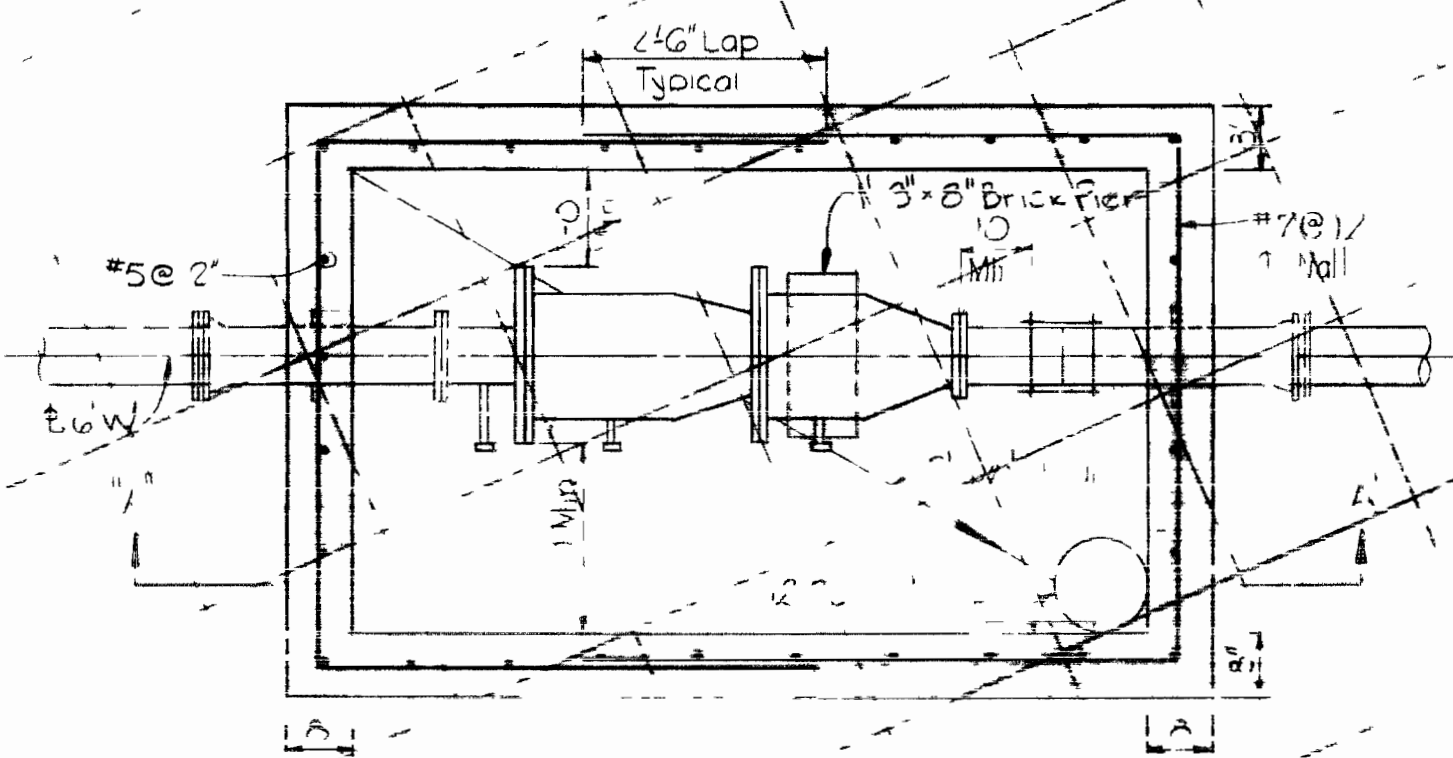
AS-BUILT MARCH 9, 1983

1/10 405 519

GENERAL CONCRETE NOTES

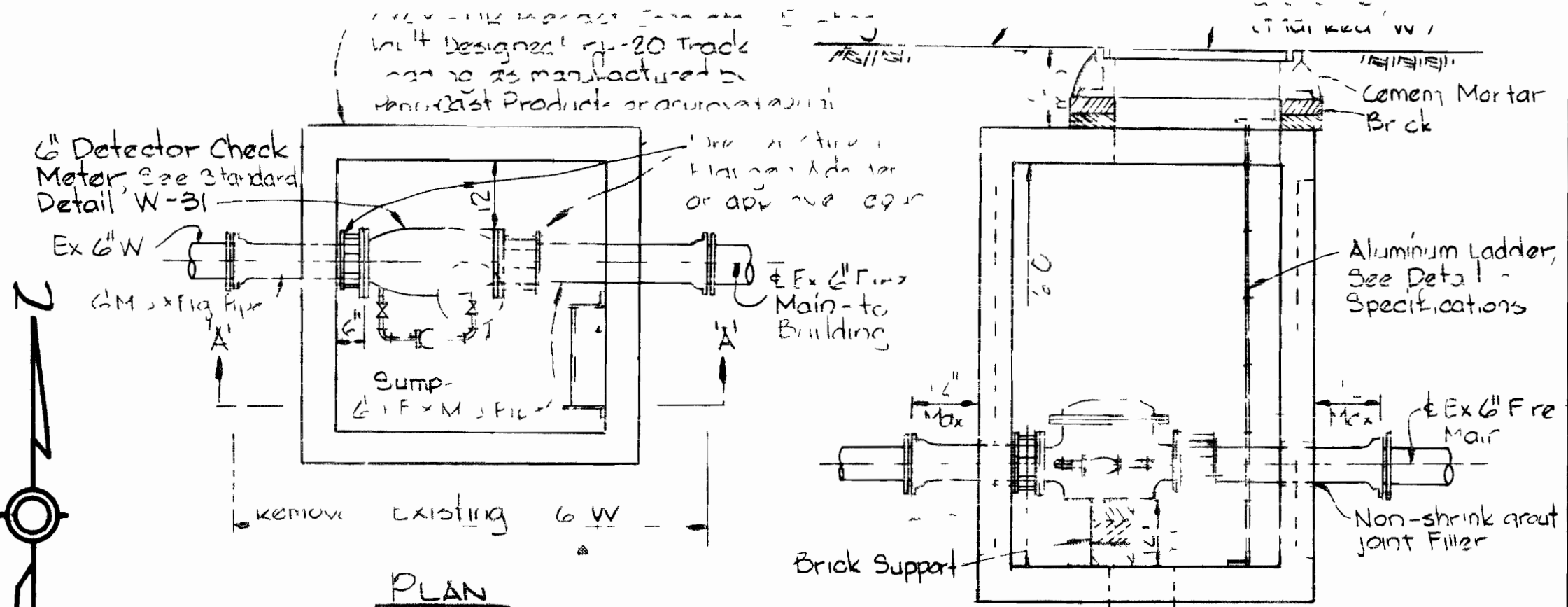
- 1 All reinforced concrete shall be Class A, 3500 psi at 28 days
- 2 Reinforcing steel shall be intermediate grade (ASTM A-15) with deformations conforming to ASTM Specification A-305
- 3 All dowel projections beyond construction joints shall be 30-inch diameter
- 4 All bar laps shall be 30 inch diameters unless otherwise noted

Note
 1 All exposed steel to be coated with 2 coats of Mabil Asphalt 35 J-11 or approved equal.
 2 All concrete shall be Class A



DETECTOR CHECK PLAN

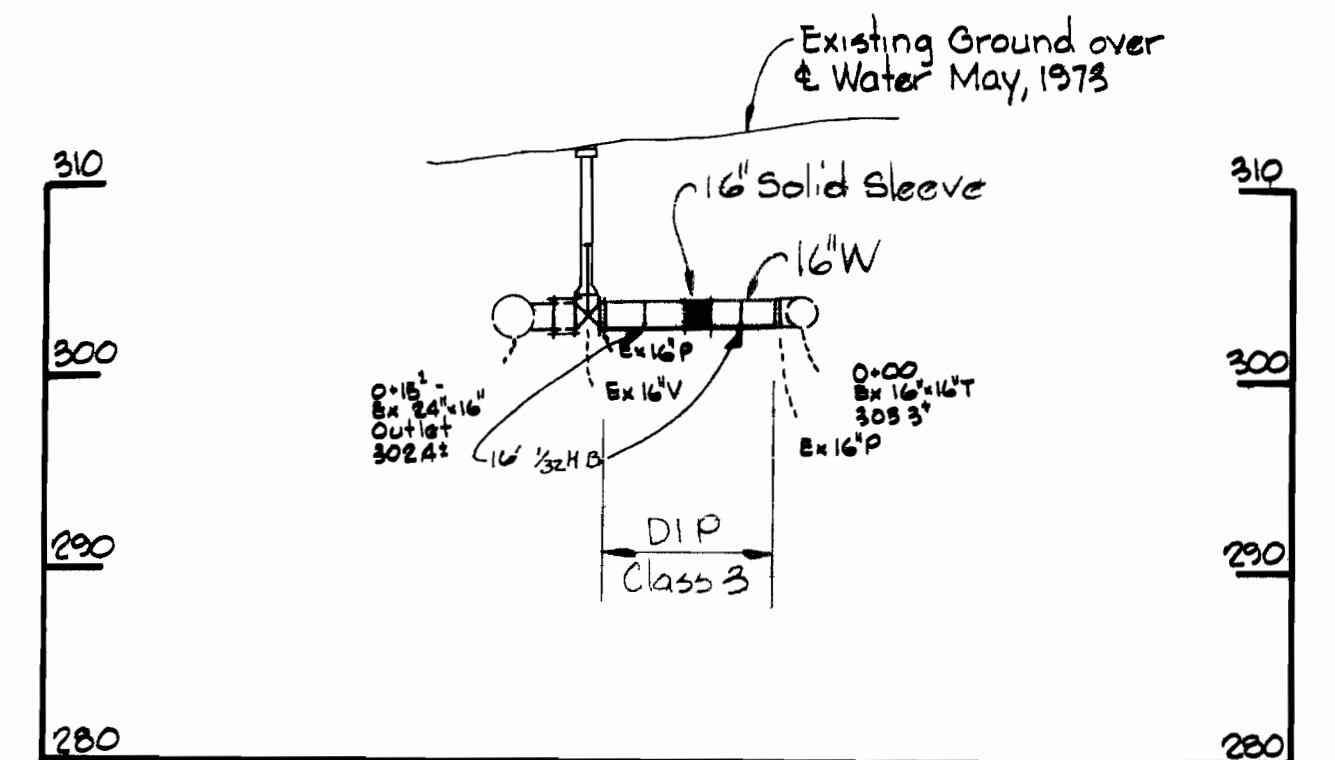
Scale 1"=50'



SECTION A-A

DETECTOR CHECK DETAIL

Scale 1/2"=1'-0"

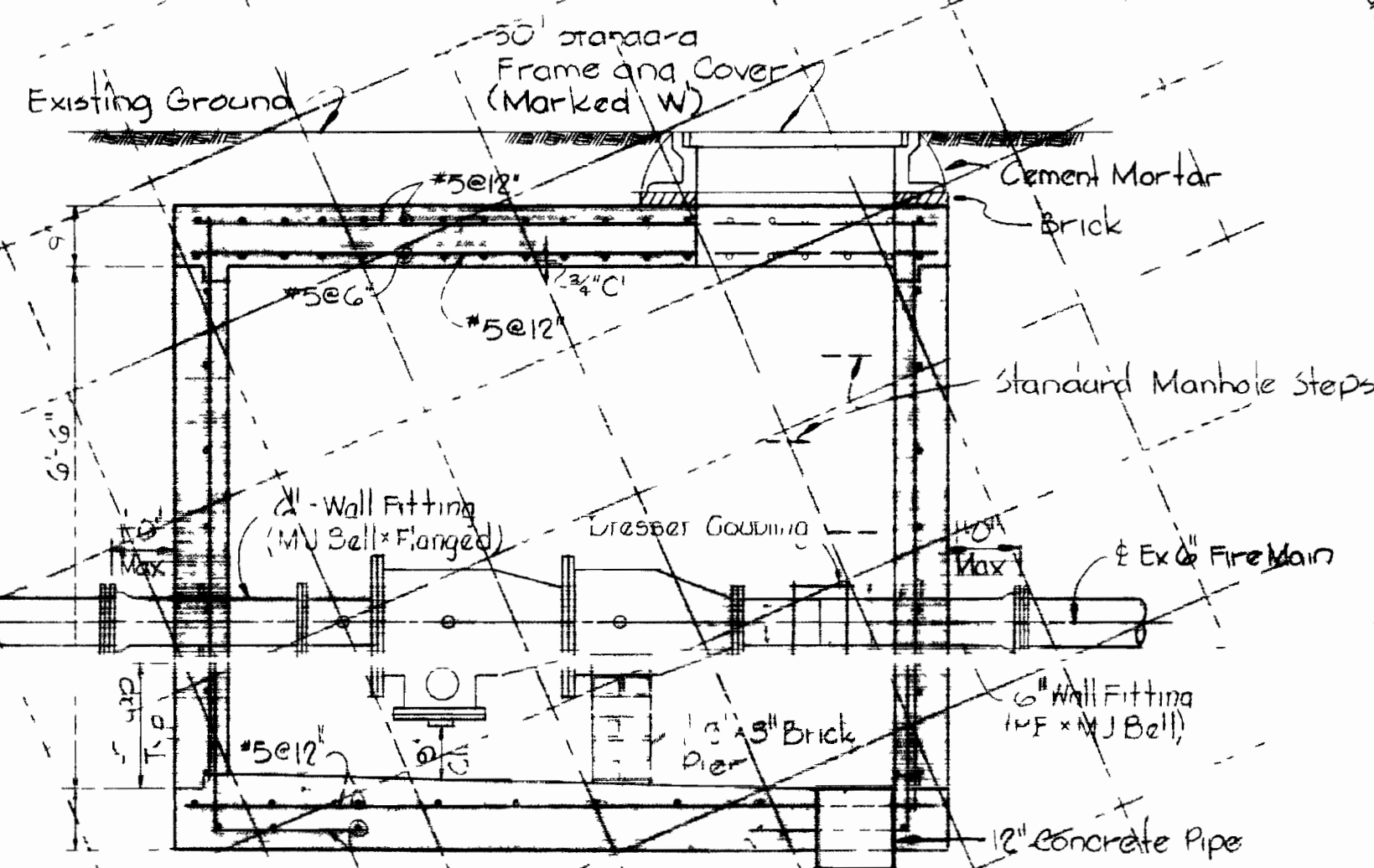


PROFILE 16" CONNECTION

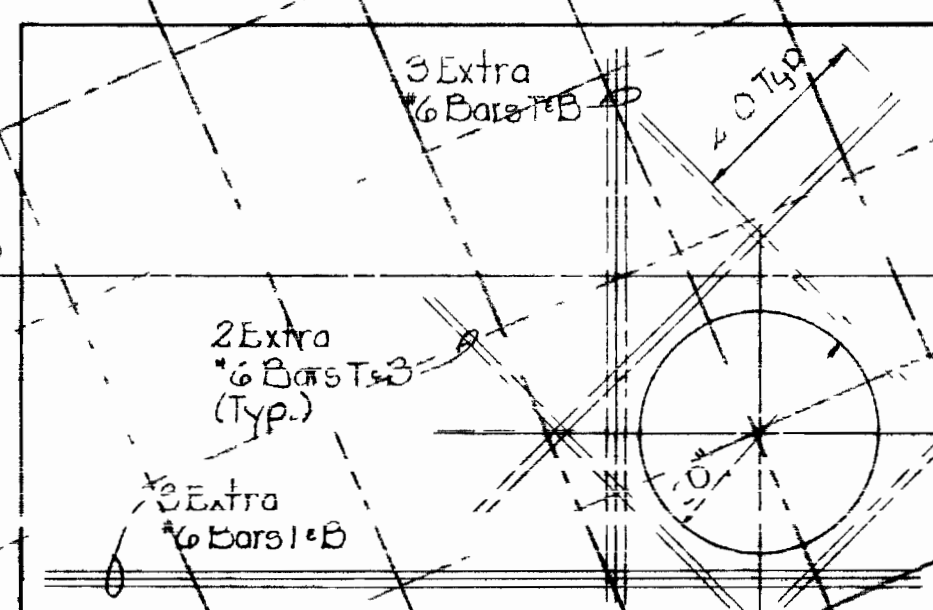
Scale H 1"=10' V 1"=10'



Ernest J. McLeod



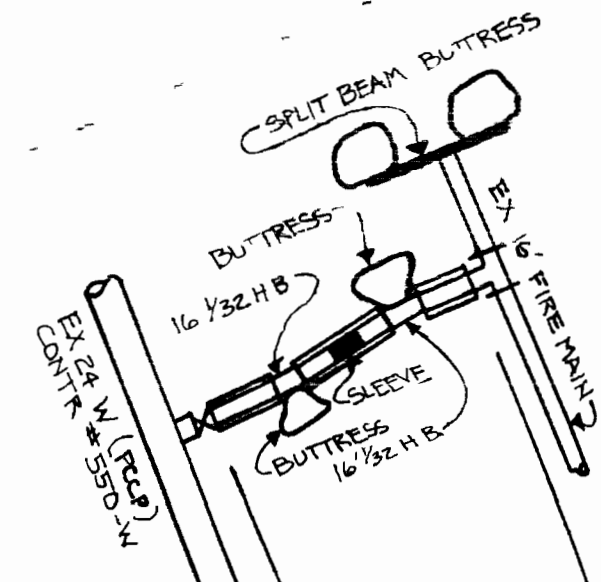
SECTION A-A



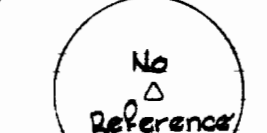
TOP SLAB PLAN

6" BACKFLOW PREVENTER VALVE AND VAULT

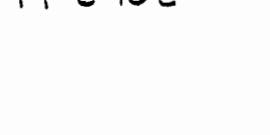
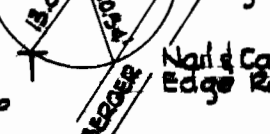
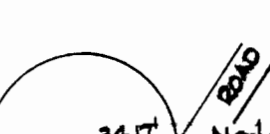
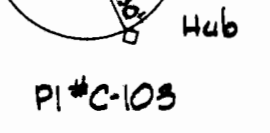
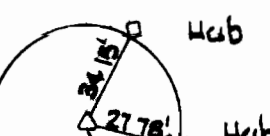
Scale 1/2"=1'-0"



16" CONNECTION



Property of HOWARD RESEARCH AND DEVELOPMENT CORPORATION



Build 16" W between Ex 16" V and Ex 16" x 16" T
 Ex 16" V is strapped to 24" x 16" Outlet
 NOTE SEE BLOWUP OF 16" CONNECTION

Proposed Right of Way Line of Through Highway

Proposed Westbound Roadway ROUTE

PROPOSED RELOCATED ROUTE

PLAN 16" CONNECTION Scale 1"=50'

CONTRACT NO 564-D-W

PLAN, PROFILE AND DETAIL OF WATER MAINS

E.G.U. FIRE MAIN COLUMBIA ELECTION DISTRICT NO. 6

DRAWING NO. 2 OF 3 SCALE AS SHOWN

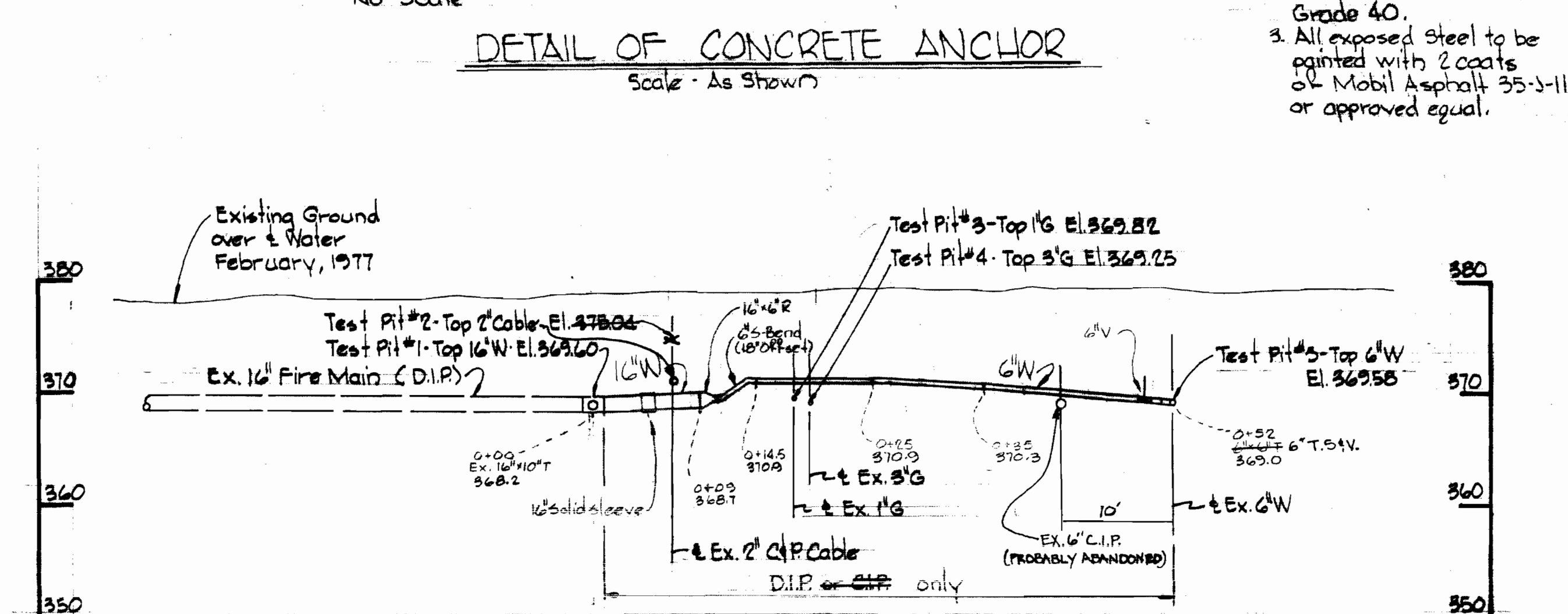
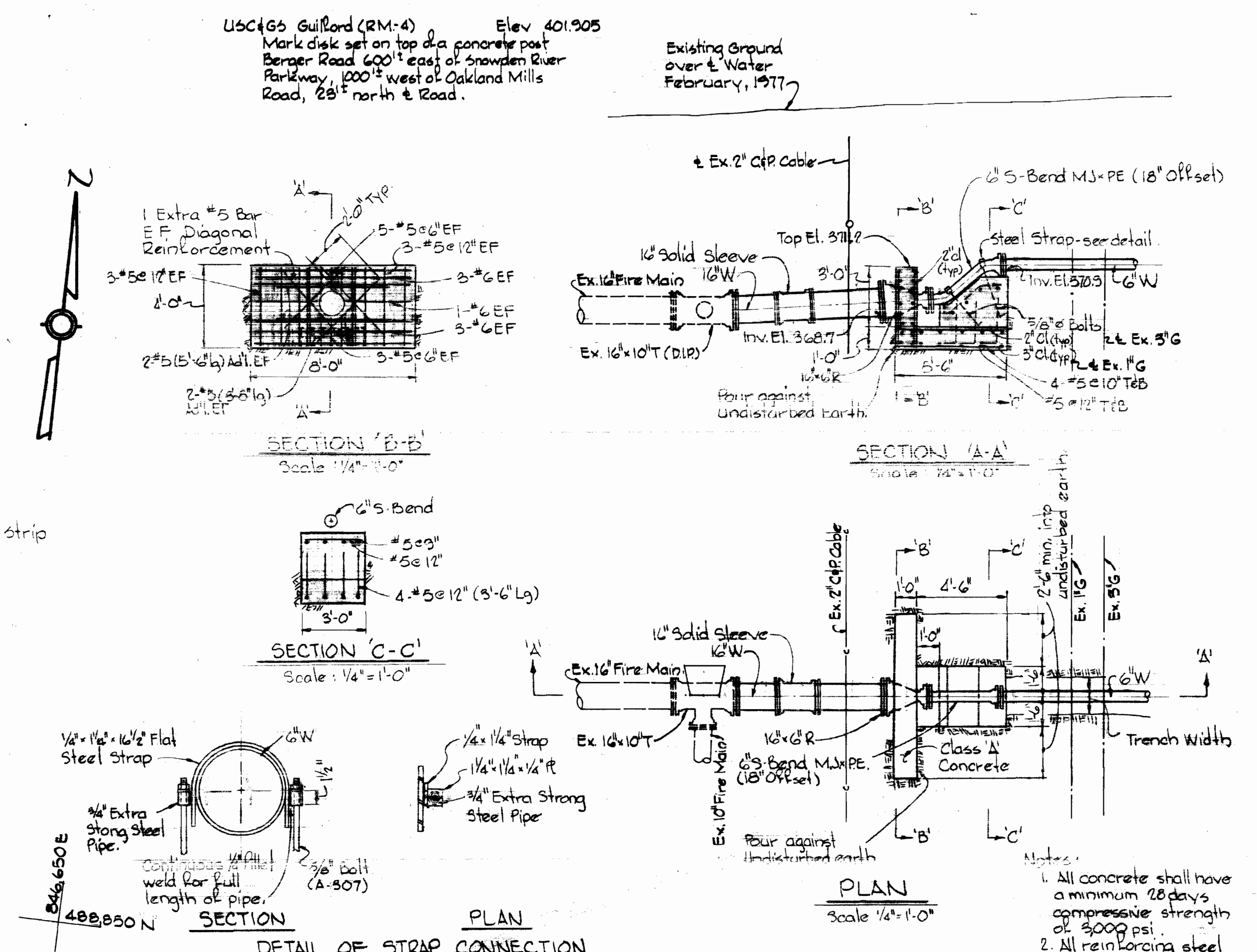
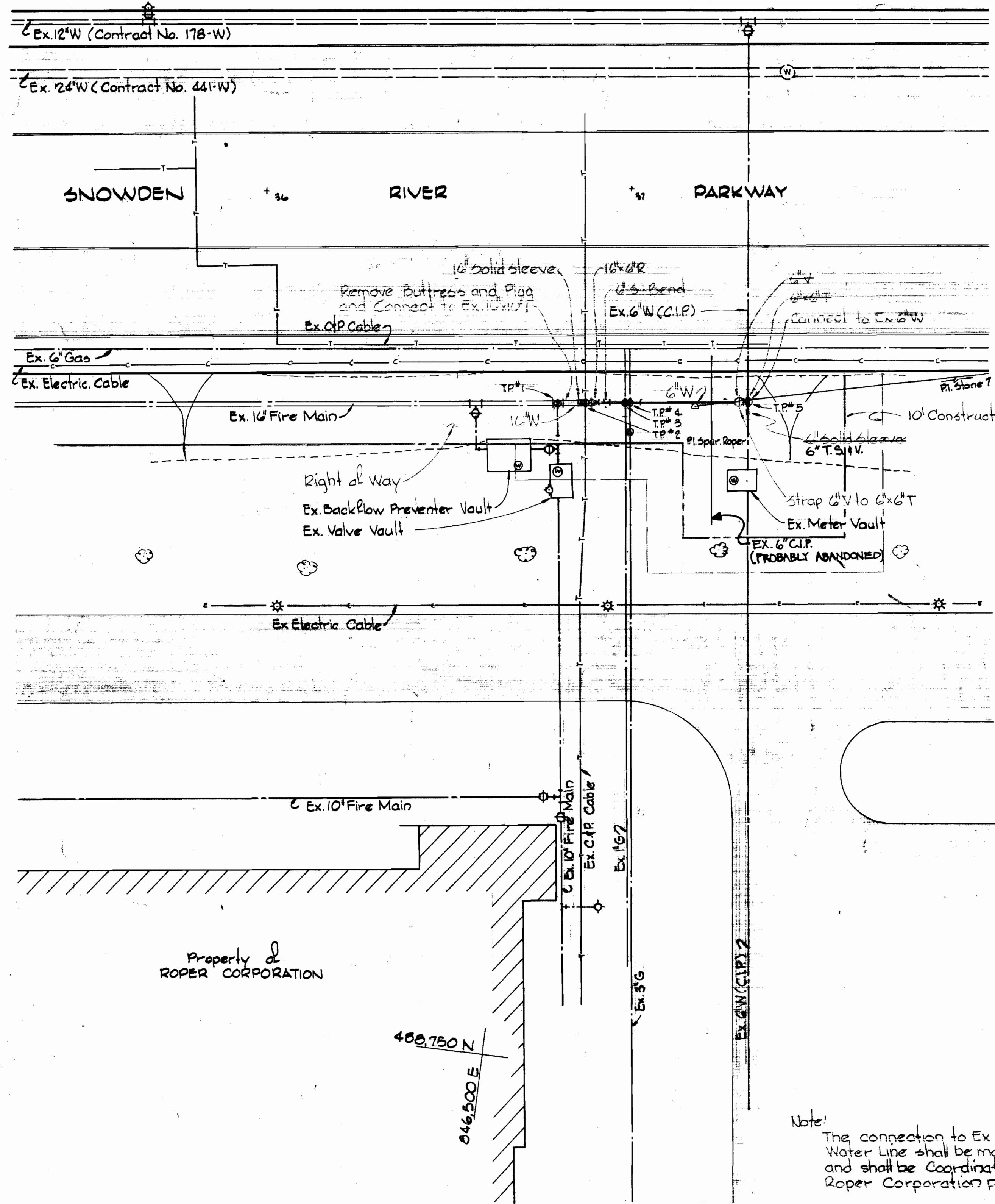
SEPTEMBER 26, 1977 AS-BUILT MARCH 9, 1983

WHITMAN, REQUARDT & ASSOCIATES ENGINEERS 1304 ST PAUL ST BALTIMORE MARYLAND

DEPARTMENT OF PUBLIC WORKS HOWARD COUNTY MARYLAND CONTRACT NO 564-D-W

W 0* 2474

WHITMAN 44-51C 16182



Note:
The connection to Ex. 6\"/>

- Notes:
1. All concrete shall have a minimum 28 days compressive strength of 3000 psi.
 2. All reinforcing steel shall be ASTM-A 615 Grade 40.
 3. All exposed steel to be painted with 2 coats of Mobil Asphalt 35-3-11 or approved equal.

PLAN
6\"/>

6\"/>

PROFILE
6\"/>

WHITMAN, REQUARDT & ASSOCIATES ENGINEERS 1304 ST. PAUL ST. BALTIMORE, MARYLAND	DEPARTMENT OF PUBLIC WORKS HOWARD COUNTY, MARYLAND P.D. [Signature] 3-27-78 DIRECTOR OF PUBLIC WORKS - DATE	CONTRACT NO. 564 D-W W.O. [Signature] 3-27-78 CHIEF BUREAU OF ENGINEERING - DATE	PLAN, PROFILE AND DETAIL OF WATER MAINS	E.G.U. FIRE MAIN COLUMBIA ELECTION DISTRICT NO. 6	DRAWING NO. 3 OF 3 SCALE AS SHOWN
---	--	--	--	---	--------------------------------------

W. O. # 2414

Contract No. 564 D-W
 FB# 5543
 SEPTEMBER 26, 1977
 AS-BUILT MARCH 9, 1983

WS 564 wfs

BRUNING 44510 18992