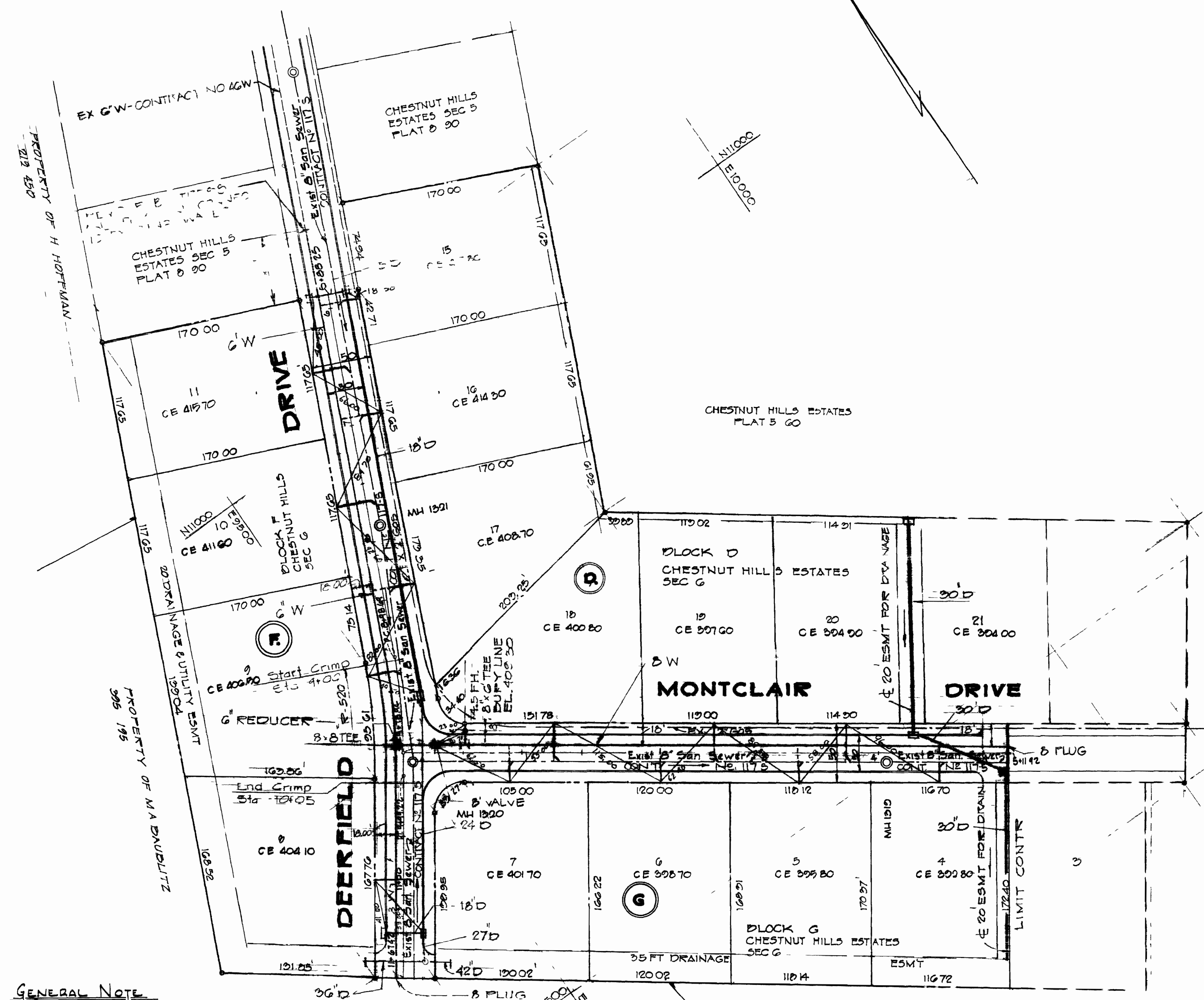


VICINITY MAP
SCALE 1-1/2 MILE

Item 2 (Continued)
Boender Assoc Bench Mark #4 Elev 300.10
Description Nail set at base of Cap Pole #1 25
North of Sta 5+35.20 & Deerfield Road



GENERAL NOTES

1. Approximate location of existing mains are shown. The contractor shall take all necessary precautions to protect the existing mains and services and maintain uninterrupted supply. Any damage incurred shall be repaired immediately.
2. All pipe elevations shown are invert elevations.
3. The contractor shall locate existing utilities a minimum of two weeks in advance of construction operations in vicinity of utilities.
4. For all standard details see standards bound in Specifications.
5. All water mains to have a minimum of 5 1/2' cover.
6. Black all fittings with concrete, see standard details bound in specifications.
7. Bury line elevation on fire hydrant shall be set TO THE ELEVATIONS SHOWN ON THE DRAWINGS.
8. ALL FIRE HYDRANTS SHALL BE STRAPPED TO THE TEE AND SHALL BE BUTTRESSED WITH CONCRETE IN.
9. ACCORDANCE WITH STD. DETAIL
Boender Assoc Bench Mark #2 Elev 424.55
Description X Cut on top of curb Sta 5+65.25 & Deerfield Rd
Boender Assoc Bench Mark #3 Elev 409.84
Description Nail set at base of Cap Pole 12 West of Sta 11+60 & Deerfield Road (Item 2 Continued Above)
10. ALL HORIZONTAL CONTROLS ARE BASED ON MARYLAND STATE DATUM.

GENERAL NOTE
Exist 8" San Sewer See Contract No. 117 S
NOTE SANITARY HOUSE CONNECTIONS ARE EXISTING

PLAN
SCALE 1" = 50'

QUANTITIES	
8" WATER	720
6" WATER	450
FIRE HYD	1



CHESTNUT HILLS ESTATES
CONTRACT NO 563 D-W
DEERFIELD DRIVE
MONTCLAIR DRIVE

ws 563 w/1

BOENDER ASSOCIATES INC
ENGINEERS & SURVEYORS
8726 TOWN & COUNTRY BLVD
HOWARD COUNTY, MARYLAND 21043

HOWARD COUNTY DEPARTMENT OF PUBLIC WORKS
DATE 8-7-73
W. O. Palant
CHIEF - BUREAU OF ENGINEERING

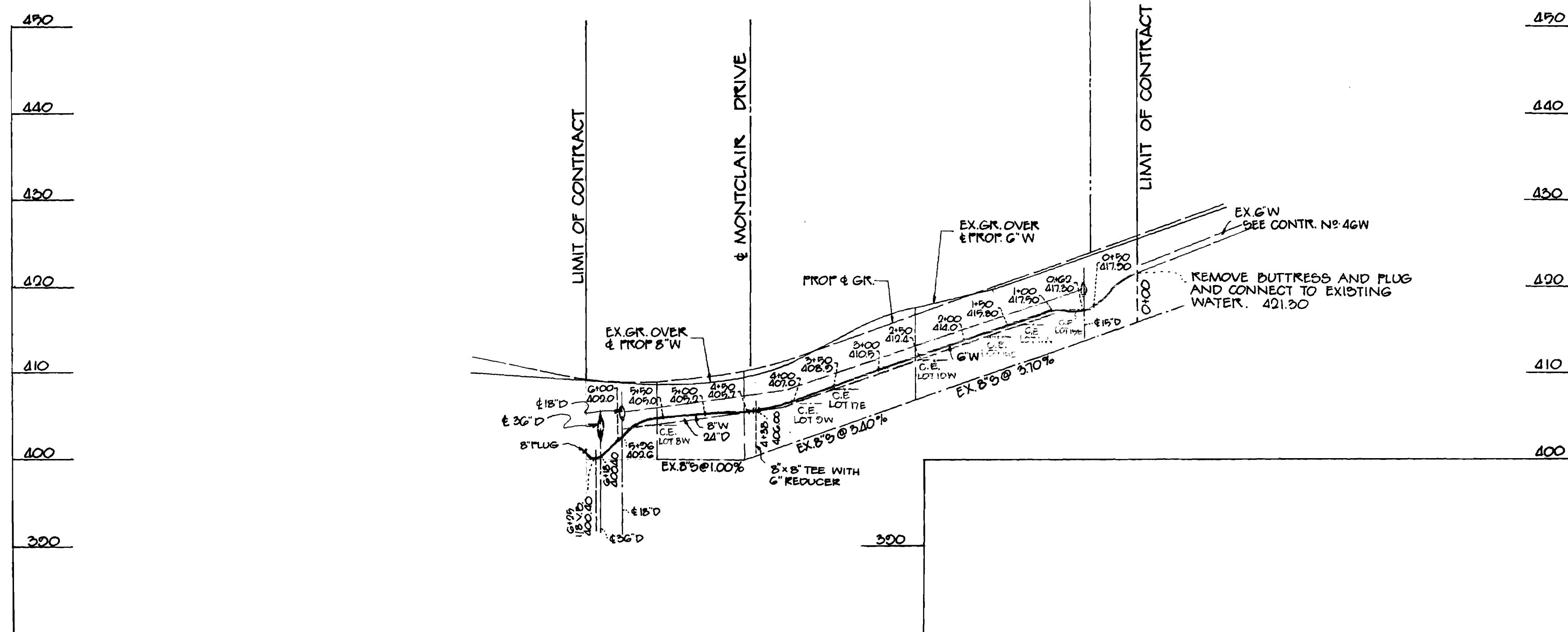
CONTRACT NO 563-D-W

PLAN & PROFILE
OF WATER MAIN

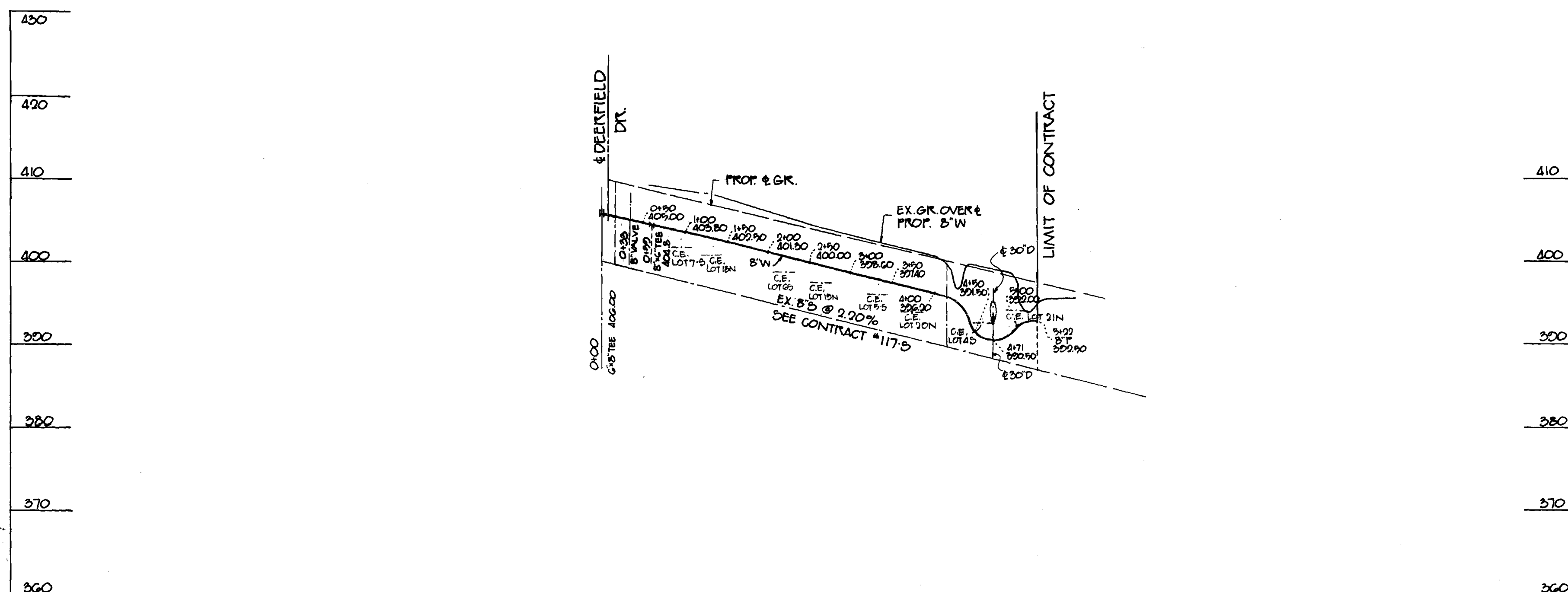
ELLCOTT CITY
CHESTNUT HILLS ESTATES
SECTION 6 ELECTION DISTRICT 2ND

DRAWING NO 1 OF 2
SCALE AS SHOWN

DEERFIELD DRIVE



MONTCLAIR DRIVE



PROFILES

SCALE: HOR. 1"=100'
VERT. 1"=10'

BOENDER ASSOCIATES INC.
ENGINEERS & SURVEYORS
8726 TOWN & COUNTRY BLVD.
HOWARD COUNTY, MARYLAND 21043

DEPARTMENT OF PUBLIC WORKS
HOWARD COUNTY, MARYLAND
DATE: 8-7-73
W. J. Albert
CHIEF - BUREAU OF ENGINEERING

CONTRACT NO. 563-D-W

PLAN & PROFILE
OF WATER MAIN

ELLICOTT CITY
CHESTNUT HILLS ESTATES
SECTION 6 ELECTION DISTRICT 2ND

DRAWING NO. 2
OF 2
SCALE AS SHOWN



Marion Roper Fink

WS 563 w/2