

SHEET INDEX	
NO.	DESCRIPTION
1	TITLE SHEET
2	PLAN - CAPTAIN MOREY DRIVE
3	PLAN - DOBBIN ROAD
4	PROFILE - SANITARY
5	PROFILE - WATER 16" & 12"

COLUMBIA

HOWARD COUNTY, MARYLAND

6TH ELECTION DISTRICT

CONTRACT NO. 2559-D-W&S

WATER AND SANITARY PLANS

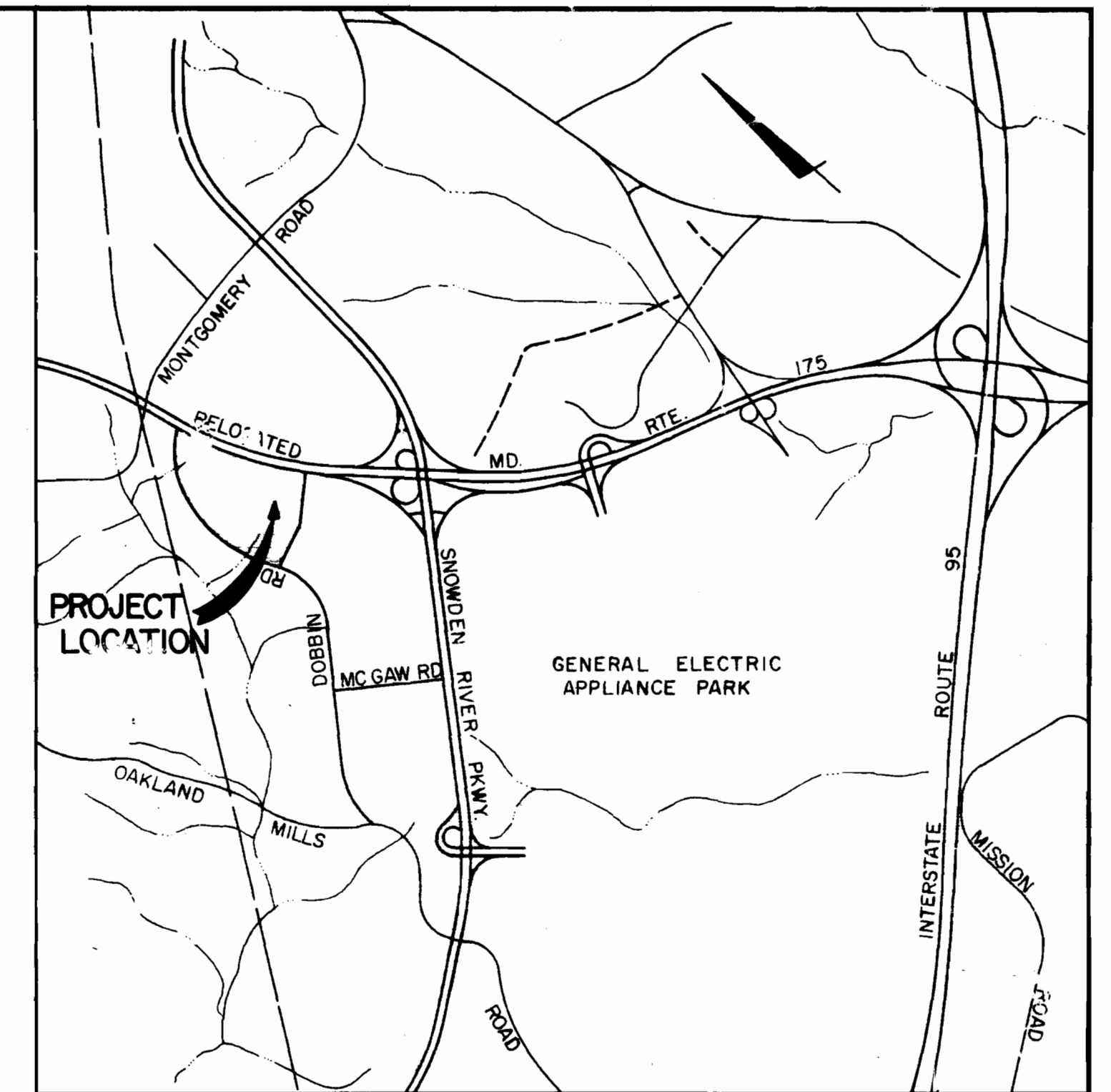
COLUMBIA AUTO PARK

SECTION I AREA I

OWNER AND DEVELOPER

THE HOWARD RESEARCH AND DEVELOPMENT CORP.

COLUMBIA, MARYLAND

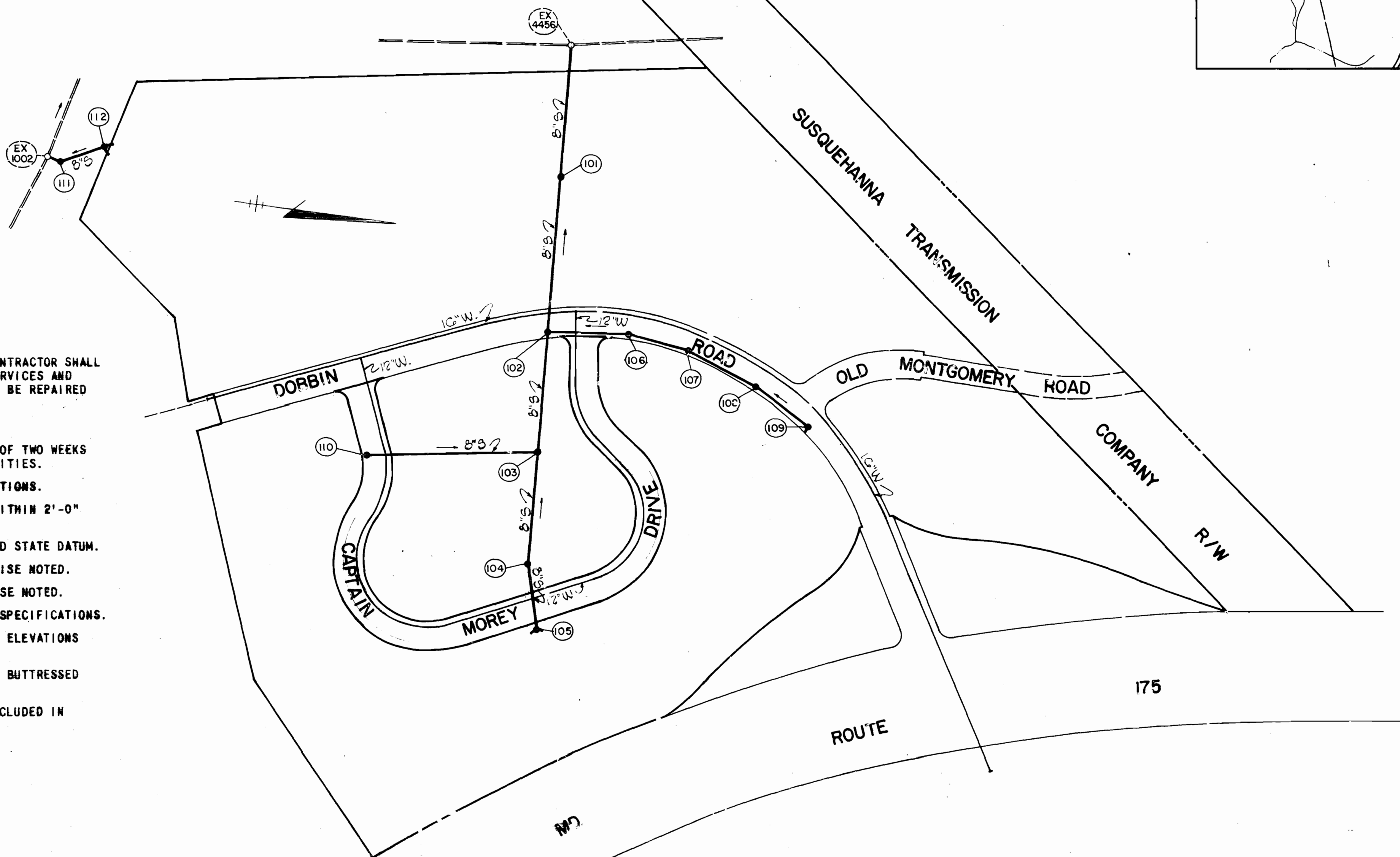


VICINITY MAP
SCALE: 1" = 200'

QUANTITIES	
ITEM	QUANTITY
8" SAN.	2,895 L.F.
SAN. MH	12 EACH
TYPE 'A' DROP CONN.	1 EACH
TYPE 'B' DROP CONN.	1 EACH
16" WATER	2,400 L.F.
12" WATER	2,175 L.F.
FIRE HYDRANTS (6")	8 EACH

GENERAL NOTES

- APPROXIMATE LOCATION OF EXISTING MAINS ARE SHOWN. THE CONTRACTOR SHALL TAKE ALL NECESSARY PRECAUTIONS TO PROTECT EXISTING SERVICES AND MAINTAIN UNINTERRUPTED SUPPLY. ANY DAMAGE INCURRED SHALL BE REPAIRED IMMEDIATELY.
- ALL PIPE ELEVATIONS SHOWN ARE INVERT ELEVATIONS.
- THE CONTRACTOR SHALL LOCATE EXISTING UTILITIES A MINIMUM OF TWO WEEKS IN ADVANCE OF CONSTRUCTION OPERATIONS IN VICINITY OF UTILITIES.
- FOR ALL STANDARD DETAILS SEE STANDARDS BOUND IN SPECIFICATIONS.
- THE CONTRACTOR SHALL PROVIDE A JOINT IN ALL SEWER MAINS WITHIN 2'-0" OF EXTERIOR MANHOLE WALLS.
- ALL HORIZONTAL AND VERTICAL CONTROLS ARE BASED ON MARYLAND STATE DATUM.
- ALL MANHOLES SHALL BE 4'-0" INSIDE DIAMETER UNLESS OTHERWISE NOTED.
- ALL WATER MAINS TO HAVE A MIN. 4'-0" COVER UNLESS OTHERWISE NOTED.
- BLOCK ALL FITTINGS WITH CONCRETE, SEE STANDARDS BOUND IN SPECIFICATIONS.
- BURY LINE ELEVATIONS ON FIRE HYDRANTS SHALL BE SET TO THE ELEVATIONS SHOWN ON DRAWINGS.
- ALL FIRE HYDRANTS SHALL BE STRAPPED TO THE TEE & SHALL BE BUTTRESSED WITH CONCRETE IN ACCORDANCE WITH STANDARD DETAILS.
- COST OF STRAPPING FIRE HYDRANTS & VALVES TO TEES TO BE INCLUDED IN UNIT PRICE BID FOR FURNISHING & LAYING OF WATER MAINS.



SCALE: 1" = 200'



Robert C. O'Neil

6/24/75	Rev. L.F. of 'G' Water in Quantity Block
No. Date	Revision

COLUMBIA AUTO PARK
SEC. I AREA I

GREEN ASSOCIATES, INC.
CONSULTING ENGINEERS
BALTIMORE, MARYLAND

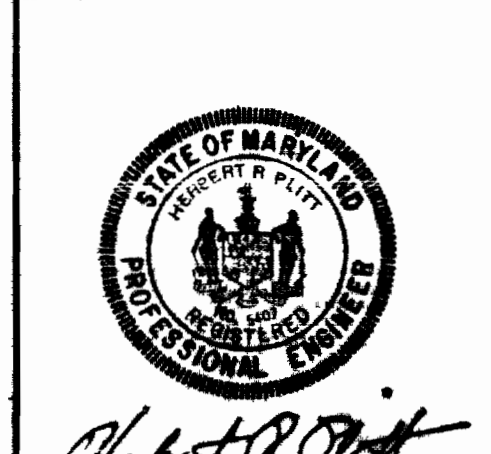
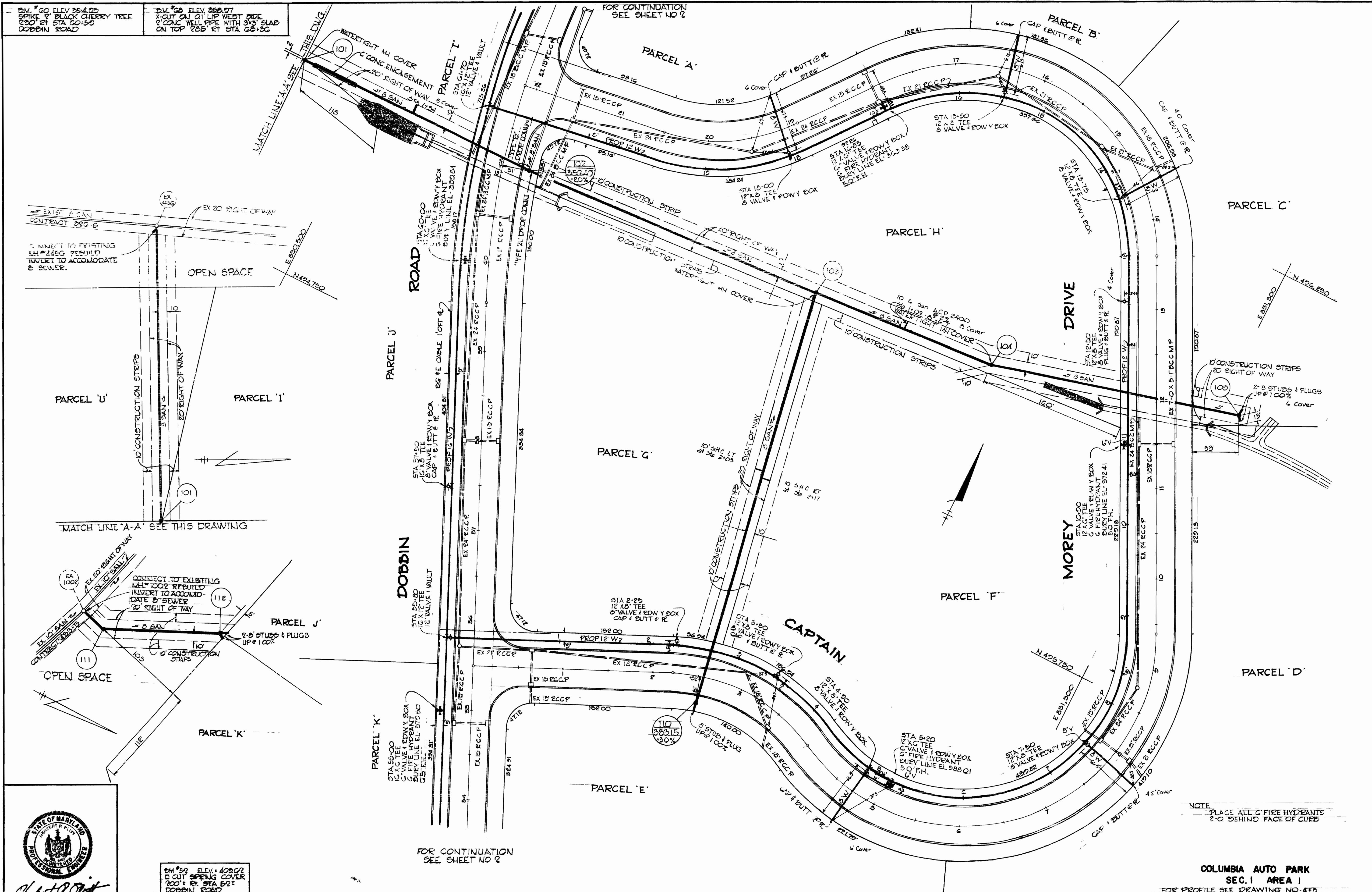
DEPARTMENT OF PUBLIC WORKS
HOWARD COUNTY, MARYLAND
DATE: 2-28-74
W.C. Falbert
CHIEF - BUREAU OF ENGINEERING

CONTRACT NO. 2559-D-W&S

TITLE SHEET

COLUMBIA AUTO PARK
ELECTION DISTRICT GULFORD NO. 6

DRAWING NO. 1 OF 5
SCALE AS SHOWN



BM #52 ELEV. 408.92
 10\"/>

GREEN ASSOCIATES, INC.
 CONSULTING ENGINEERS
 BALTIMORE, MARYLAND

DEPARTMENT OF PUBLIC WORKS
 HOWARD COUNTY, MARYLAND
 2-28-74
W O Schubert
 CHIEF - BUREAU OF SEWERWORKS

CONTRACT NO. **359-D-WSS**

PLAN OF WATER AND SEWER MAINS

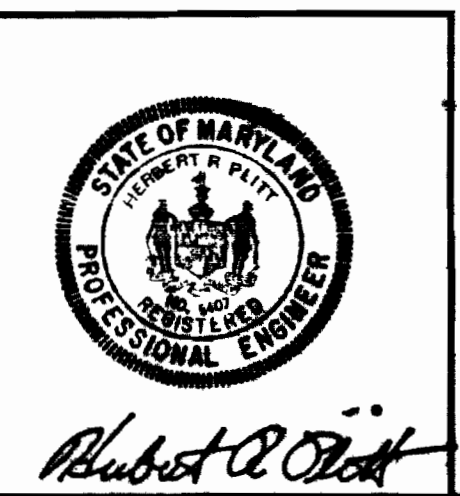
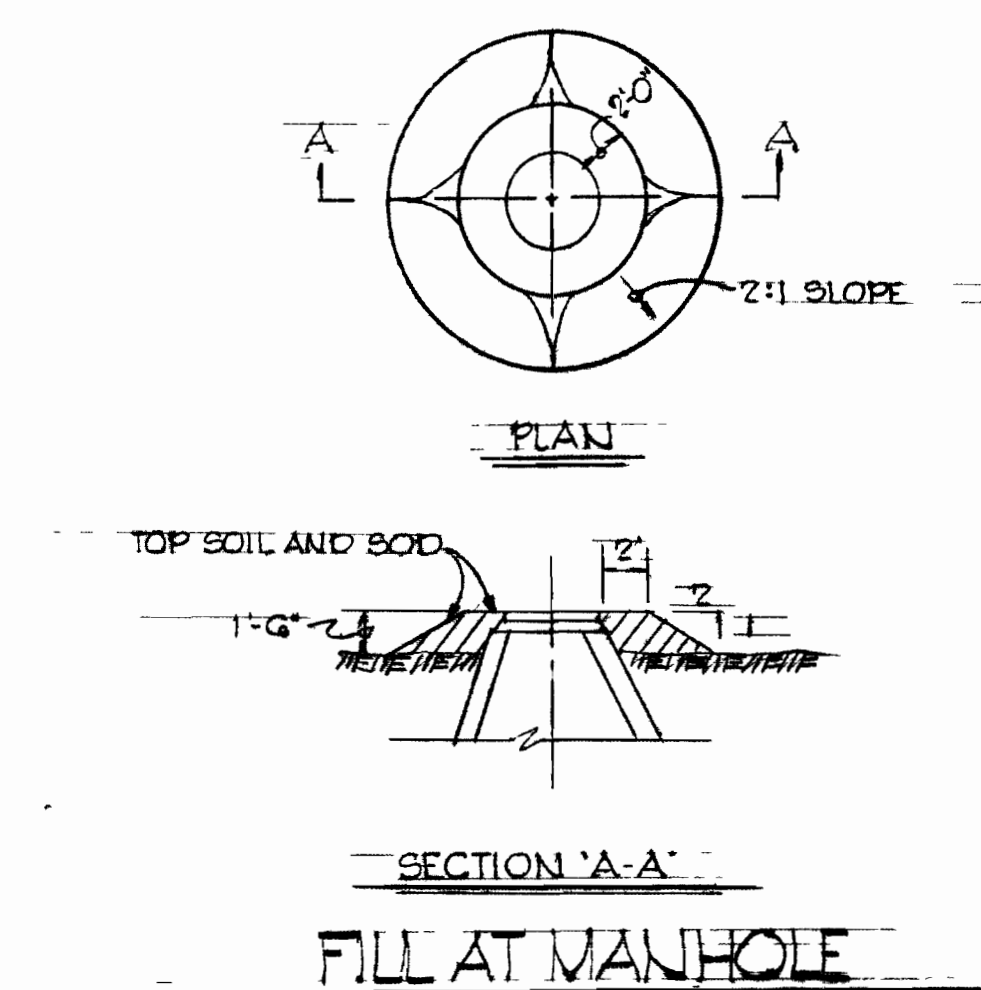
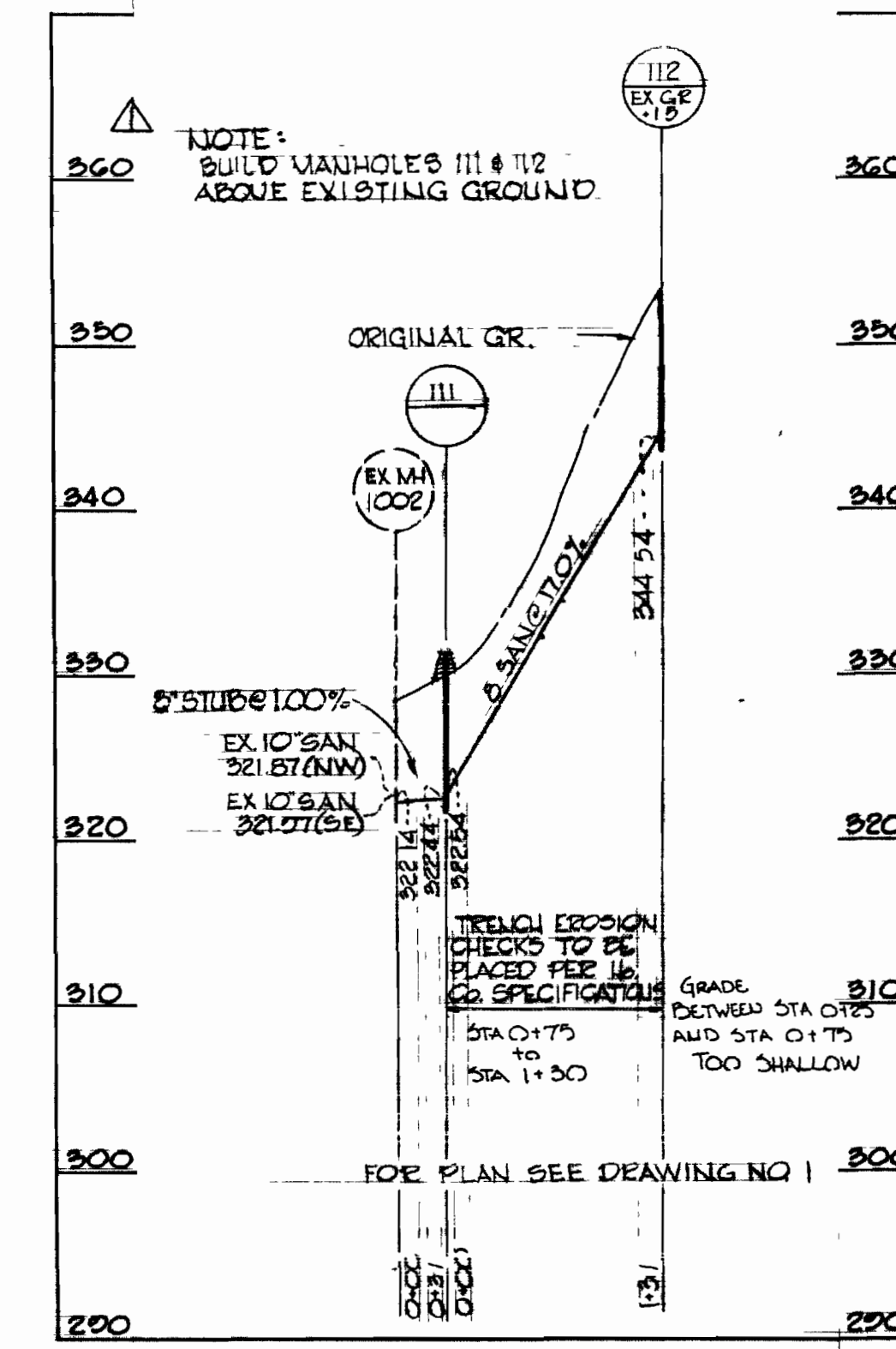
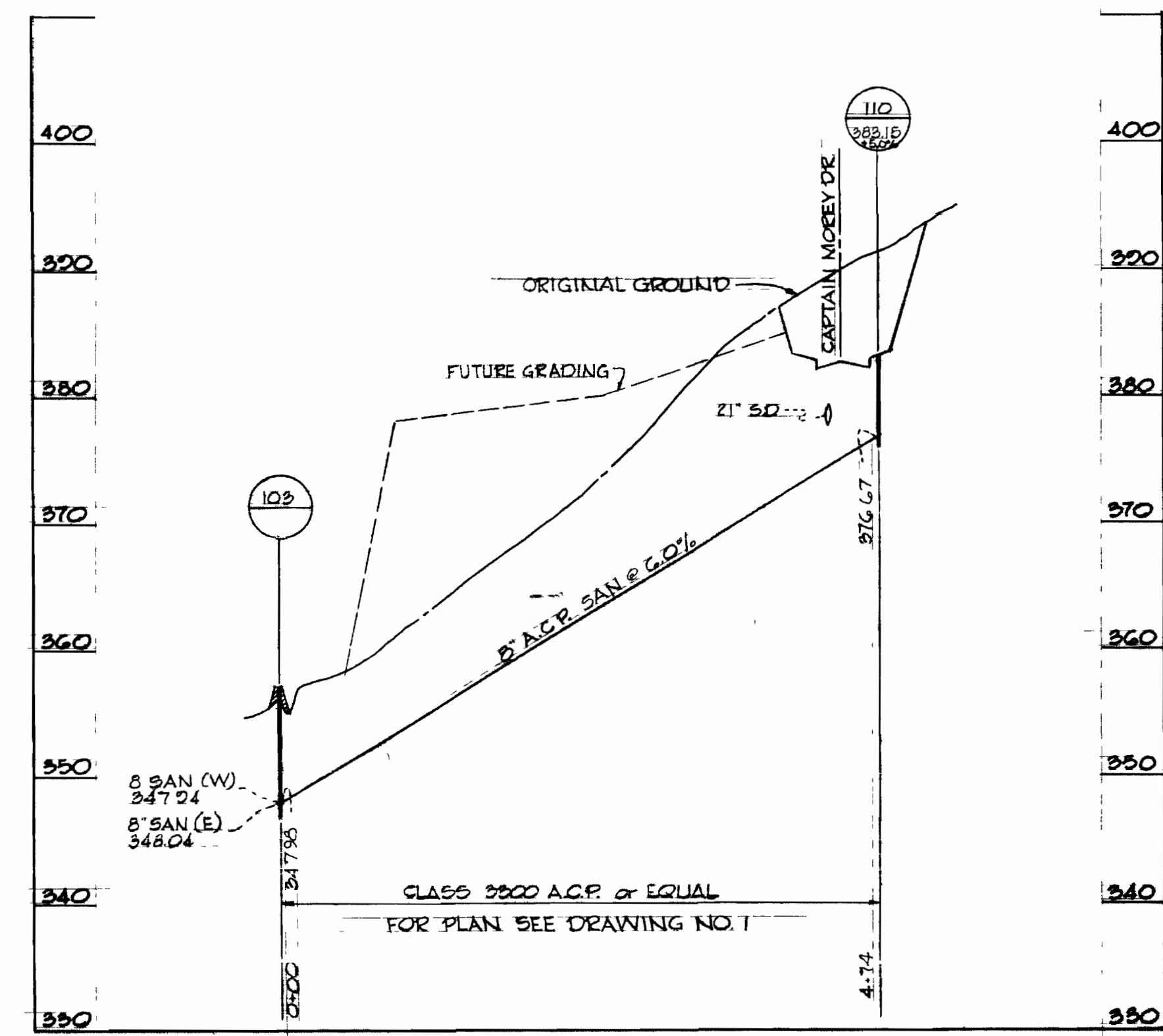
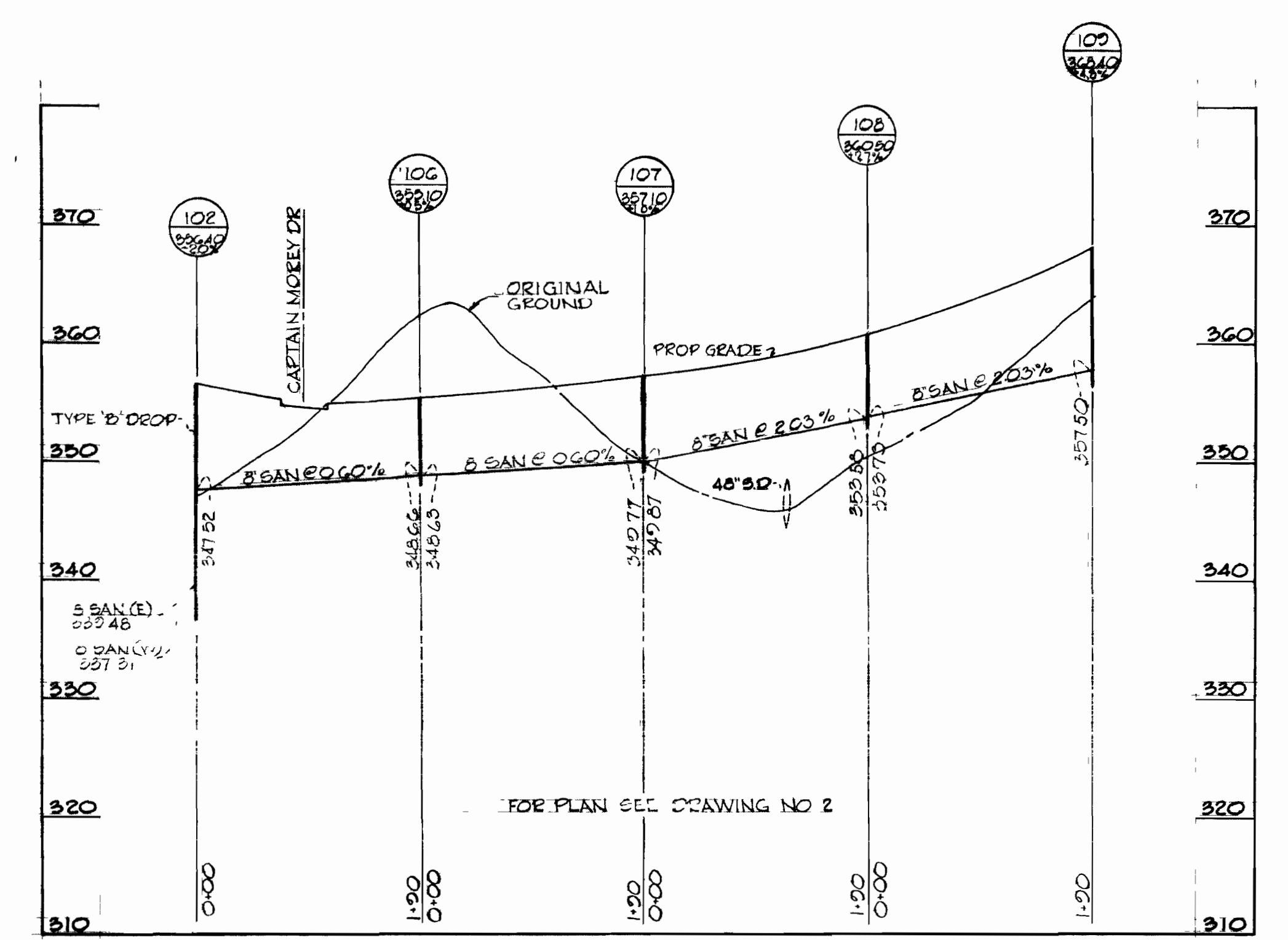
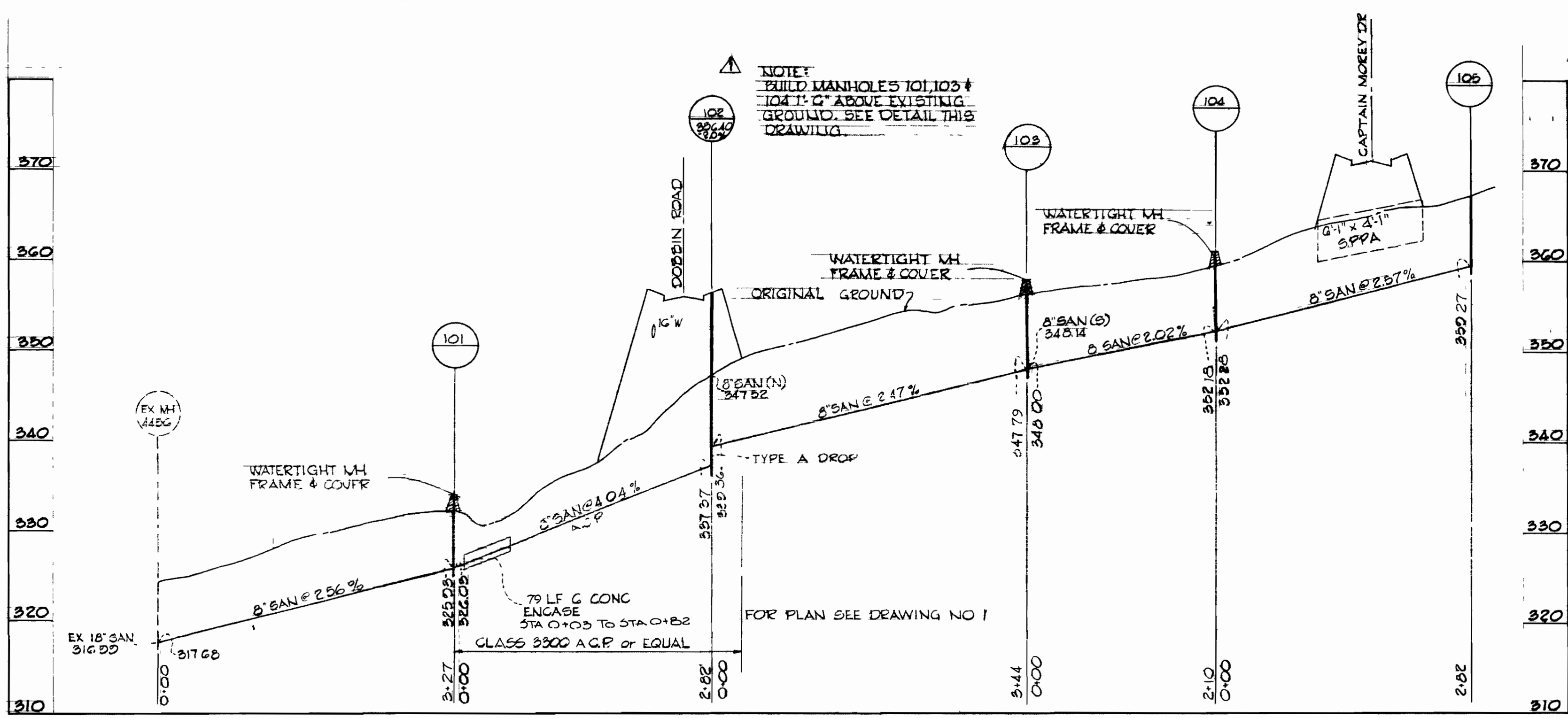
COLUMBIA AUTO PARK
 ELECTION DISTRICT GUILFORD NO. 6

DRAWING NO. **3**
 OF **5**

SCALE **1"=50'**

COLUMBIA AUTO PARK
 SEC. 1 AREA 1
 FOR PROFILE SEE DRAWING NO. 475

WS 559 W&S/3



GREEN ASSOCIATES, INC.
CONSULTING ENGINEERS
BALTIMORE, MARYLAND

DEPARTMENT OF PUBLIC WORKS
HOWARD COUNTY, MARYLAND
DATE: 2-28-74
CHIEF - BUREAU OF ENGINEERING

CONTRACT NO. 559-D-WBS

PROFILE OF WATER AND SEWER MAINS

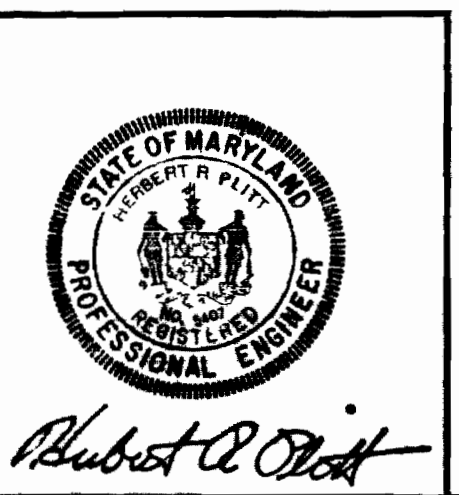
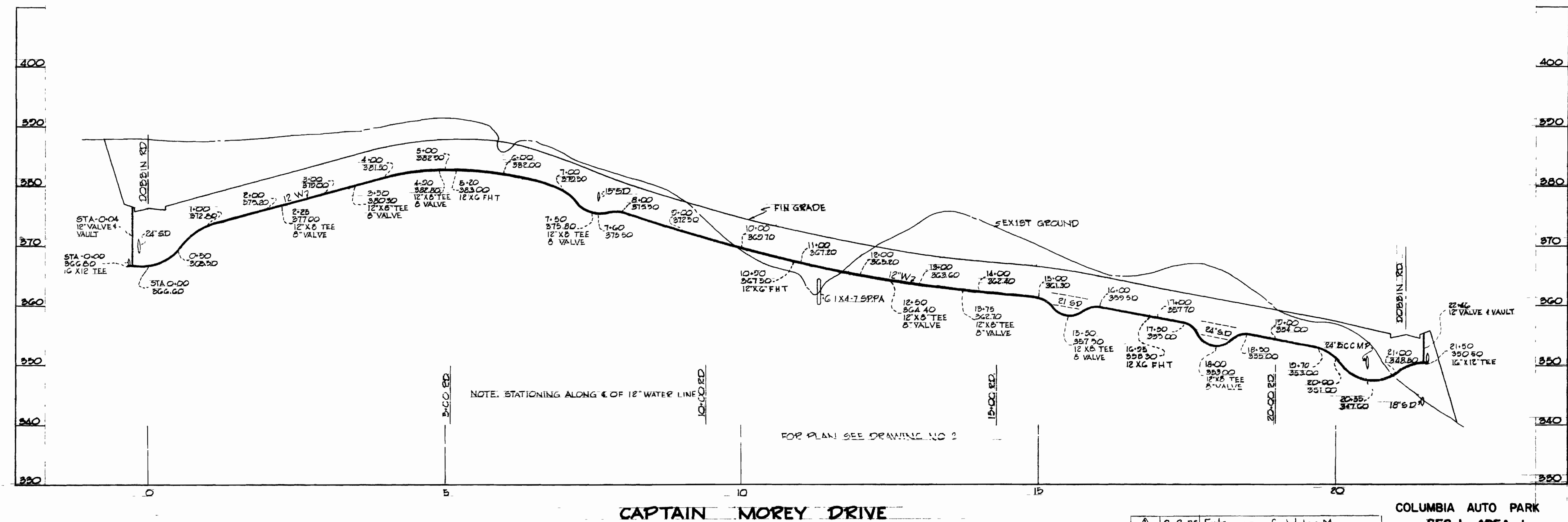
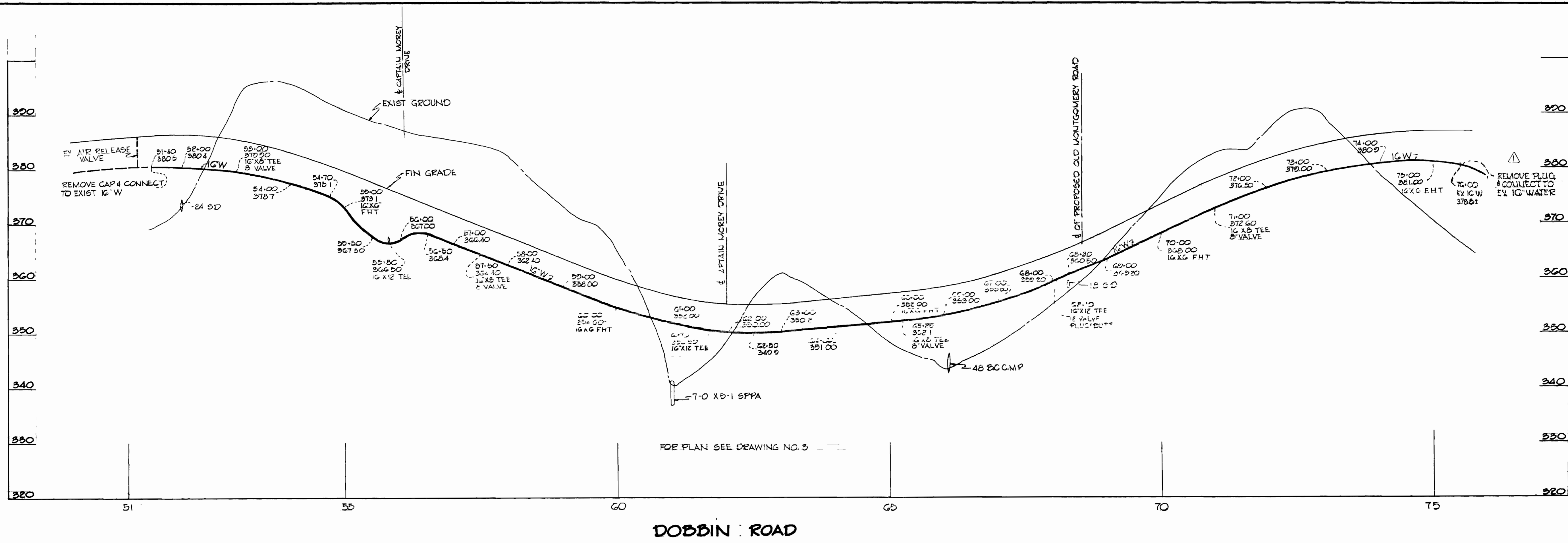
COLUMBIA AUTO PARK ELECTION DISTRICT GUILFORD NO. 6

COLUMBIA AUTO PARK
SEC. 1 AREA 1

DRAWING NO. 4 OF 5
SCALE 1" = 10' VERT 1" = 100' HORZ

No.	Date	Revision
1	2-25-74	Added Fill Around MH's 102, 103, 104 & 111

WS 559 DWS/H



GREEN ASSOCIATES, INC.
CONSULTING ENGINEERS
BALTIMORE, MARYLAND

DEPARTMENT OF PUBLIC WORKS
HOWARD COUNTY, MARYLAND
2-28-74
W. O. Gilbert
CHIEF - BUREAU OF ENGINEERS

CONTRACT NO. 559-D-W&S

PROFILE OF WATER AND SEWER MAINS

COLUMBIA AUTO PARK ELECTION DISTRICT GUILFORD NO 6

DRAWING NO. 5 OF 5
SCALE 1"=10' VERT 1"=100' HORZ

No	Date	Revision
1	8-8-75	Extension of Water Main

COLUMBIA AUTO PARK SEC. I AREA I

AS-BUILT: 5-3-76

WS 559 W&S/S