

COLUMBIA

HOWARD COUNTY, MARYLAND

6TH ELECTION DISTRICT

CONTRACT NO. 2557 D-W&S

WATER AND SANITARY PLANS

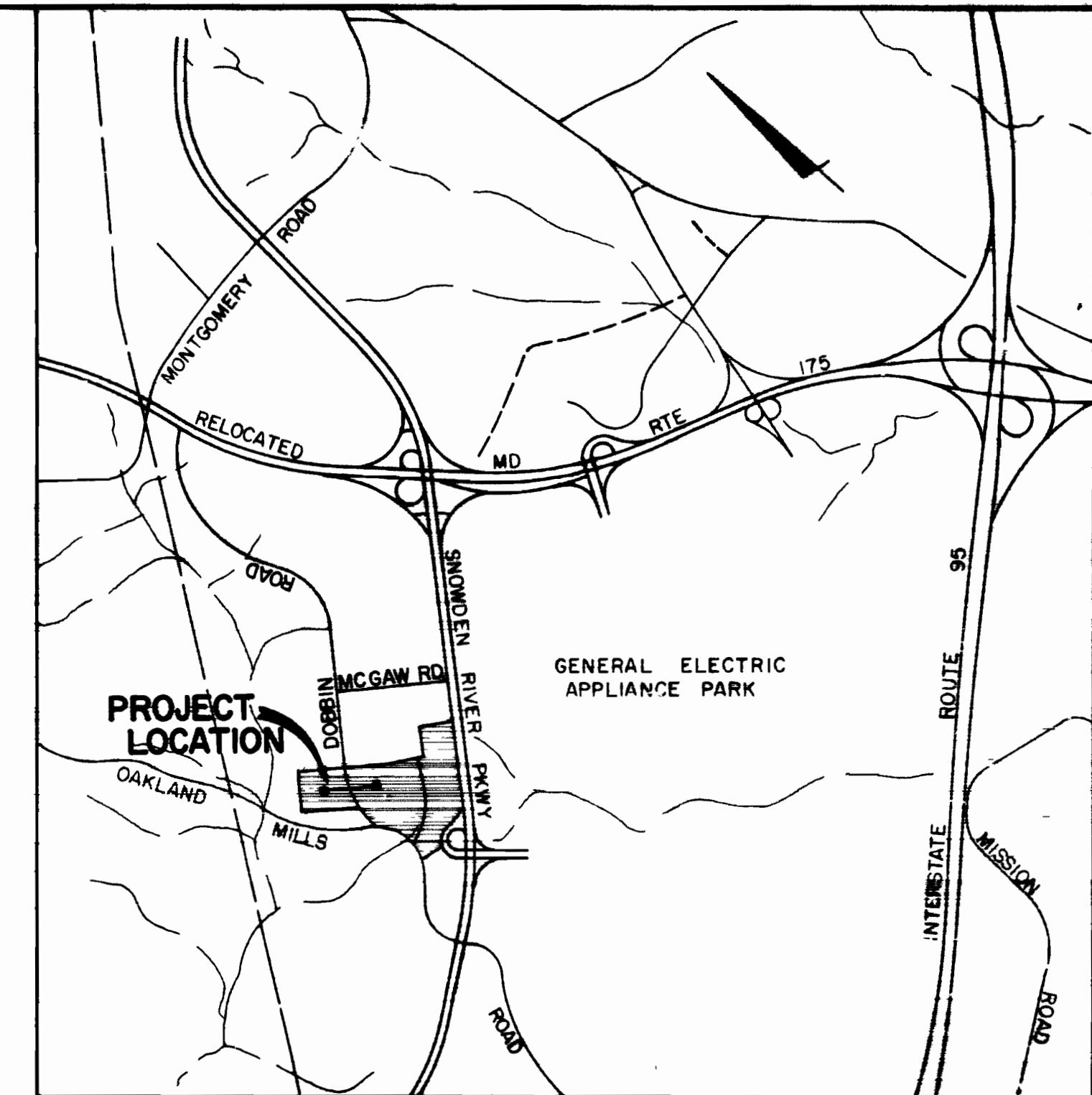
SIELING INDUSTRIAL CENTER

SECTION I AREA I

OWNER AND DEVELOPER

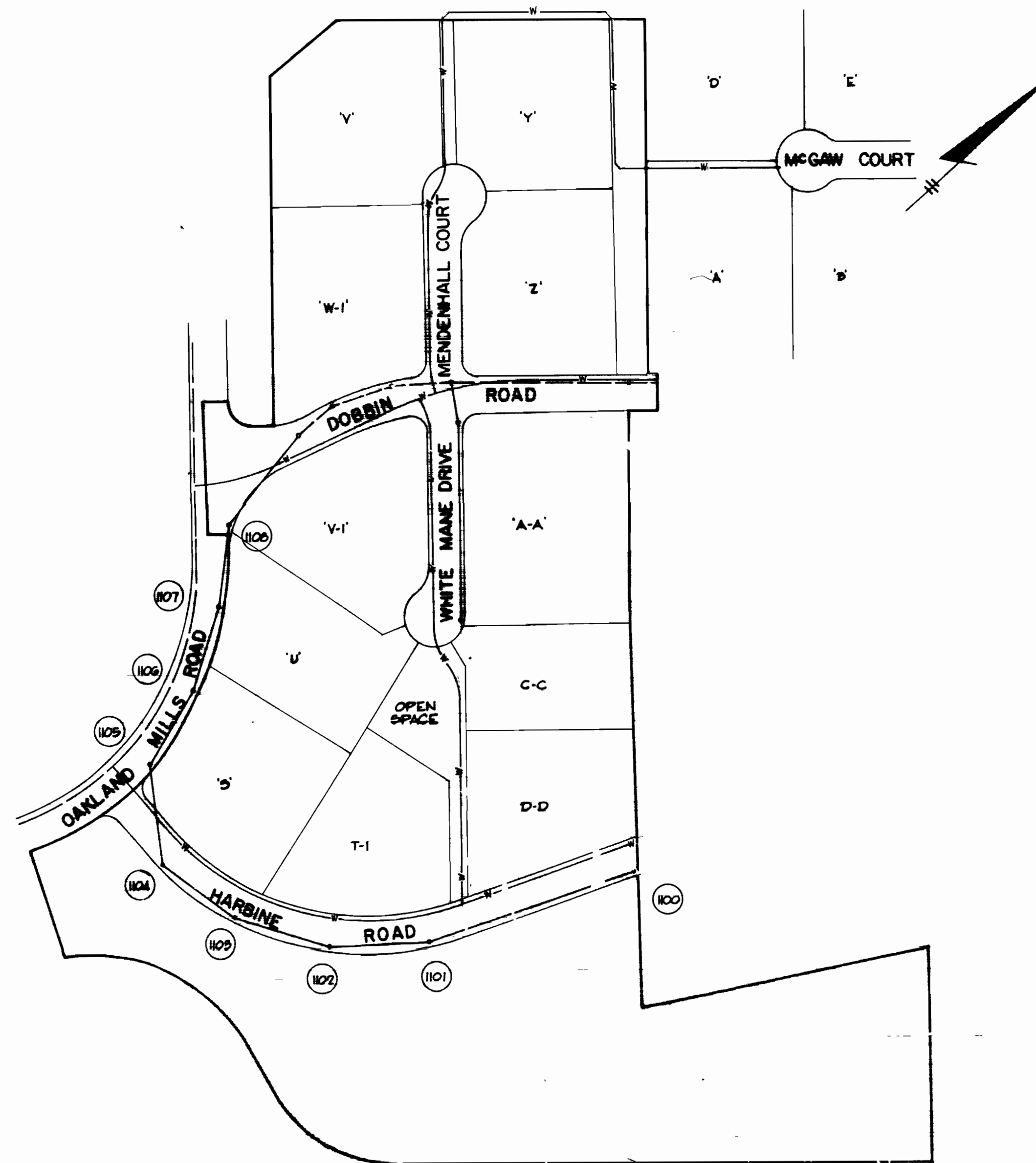
THE HOWARD RESEARCH AND DEVELOPMENT CORP.

COLUMBIA, MARYLAND



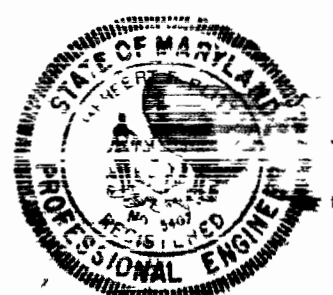
VICINITY MAP
SCALE 1"=2000'

QUANTITIES	
ITEM	QUANTITY
8" SANITARY	1700 L.F.
10" SANITARY	995 L.F.
512 MANHOLES	12
6" WATER	74 L.F.
8" WATER	1000 L.F.
10" WATER	925 L.F.
10" WATER	1015 L.F.
4" FIRE HYDRANTS	5
AIR RELEASE VALVE	1



GENERAL NOTES

- APPROXIMATE LOCATION OF EXISTING MAINS ARE SHOWN. THE CONTRACTOR SHALL TAKE ALL NECESSARY PRECAUTIONS TO PROTECT EXISTING SERVICES AND MAINTAIN UNINTERRUPTED SUPPLY. ANY DAMAGE INCURRED SHALL BE REPAIRED IMMEDIATELY.
- ALL PIPE ELEVATIONS SHOWN ARE INVERT ELEVATIONS.
- THE CONTRACTOR SHALL LOCATE EXISTING UTILITIES A MINIMUM OF TWO WEEKS IN ADVANCE OF CONSTRUCTION OPERATIONS IN THE VICINITY OF UTILITIES.
- FOR ALL STANDARD DETAILS SEE STANDARDS BOUND IN SPECIFICATIONS.
- THE CONTRACTOR SHALL PROVIDE A JOINT IN ALL SEWER MAINS WITHIN 7'-0" OF EXTERIOR MANHOLE WALLS.
- ALL HORIZONTAL AND VERTICAL CONTROLS ARE BASED ON MARYLAND STATE DATUM.
- ALL MANHOLES SHALL BE 4'-0" INSIDE DIAMETER UNLESS OTHERWISE NOTED.
- ALL WATER MAINS TO HAVE A MINIMUM OF 36" COVER.
- BLOCK ALL FITTINGS WITH CONCRETE, SEE STANDARDS BOUND IN SPECIFICATIONS.
- BURY LINE ELEVATIONS ON FIRE HYDRANTS SHALL BE SET TO THE ELEVATIONS SHOWN ON DRAWINGS.
- ALL FIRE HYDRANTS SHALL BE STRAPPED TO THE TEE AND SHALL BE BUTTRESSED WITH CONCRETE IN ACCORDANCE WITH STANDARD DETAILS.
- COST OF STRAPPING FIRE HYDRANTS AND VALVES TO TEES TO BE INCLUDED IN UNIT PRICE BID FOR FURNISHING AND LAYING OF WATER MAINS.



Robert Q. Christ

GREEN ASSOCIATES, INC.
CONSULTING ENGINEERS
BALTIMORE, MARYLAND

DEPARTMENT OF PUBLIC WORKS
HOWARD COUNTY, MARYLAND

DATE: 2-15-74
DRAWN BY: [Signature]
CHECKED BY: [Signature]

CONTRACT NO. 2557 D-W&S

TITLE SHEET

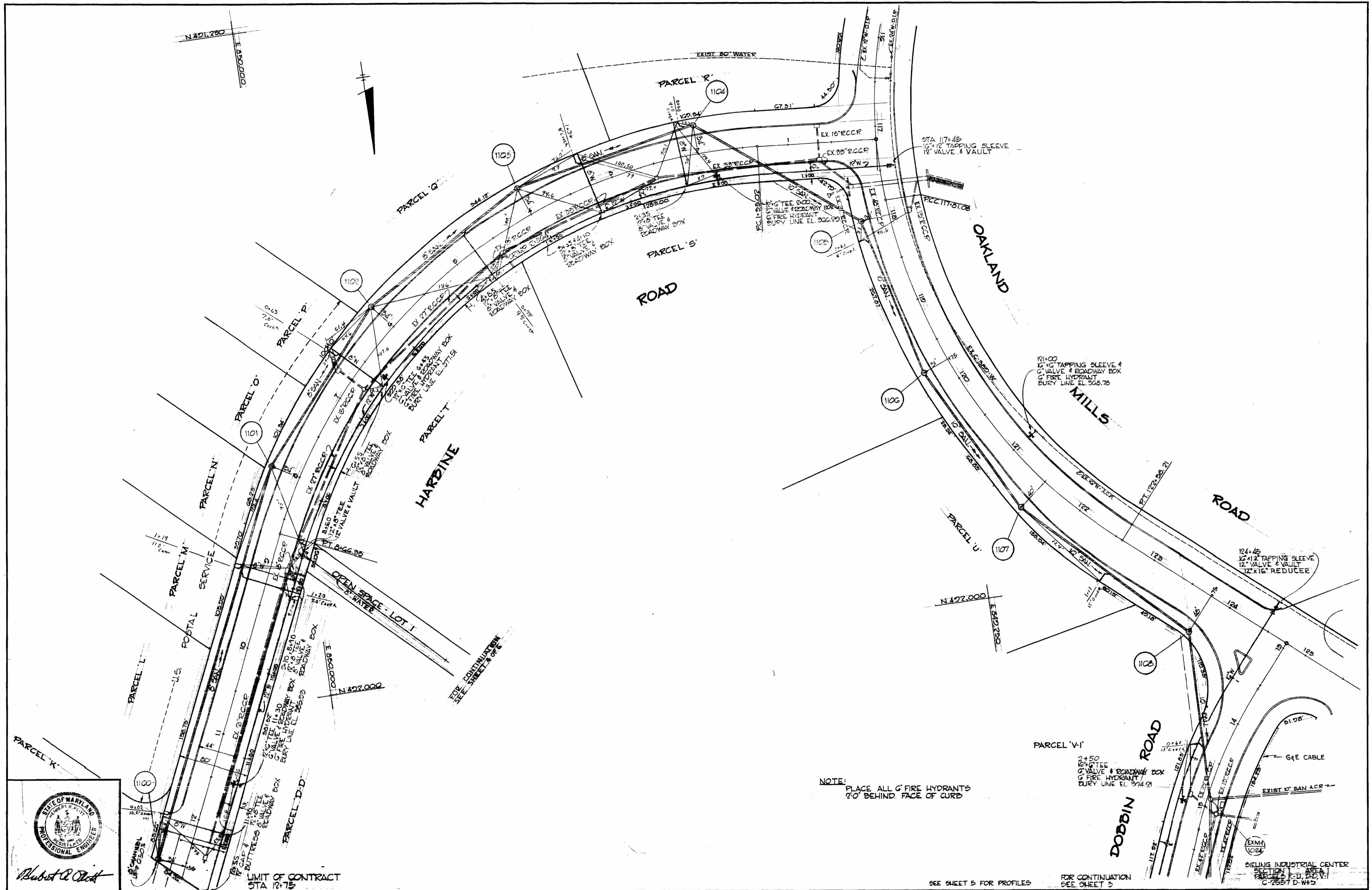
COLUMBIA
SIELING INDUSTRIAL CENTER
ELECTION DISTRICT GUILFORD NO. 6

DRAWING NO. 1 OF 8
SCALE 1"=200'

SIELING INDUSTRIAL CENTER
SECTION I AREA I
C 2557 D-W&S

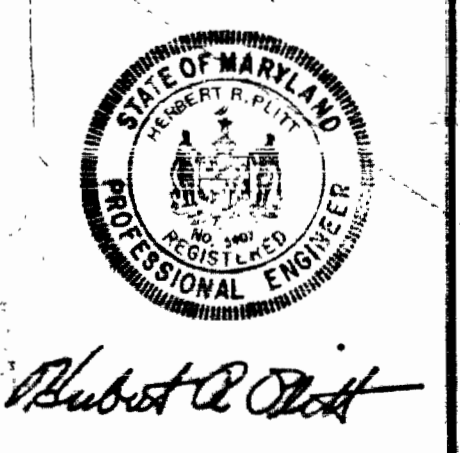
As Built 1/22/75

WS 557 W&S/



NOTE:
PLACE ALL G' FIRE HYDRANTS
2'-0" BEHIND FACE OF CURB

2'-4 1/2"
18" G' TEE
G' VALVE & ROADWAY BOX
G' FIRE HYDRANT
BURY LINE EL. 274.01



GREEN ASSOCIATES, INC.
CONSULTING ENGINEERS
BALTIMORE, MARYLAND

DEPARTMENT OF PUBLIC WORKS
HOWARD COUNTY, MARYLAND
DATE: 2-15-74
W O Albert
CHIEF - BUREAU OF ENGINEERING

CONTRACT NO. 2557 D-W&S

PLAN OF
WATER AND SEWER MAINS

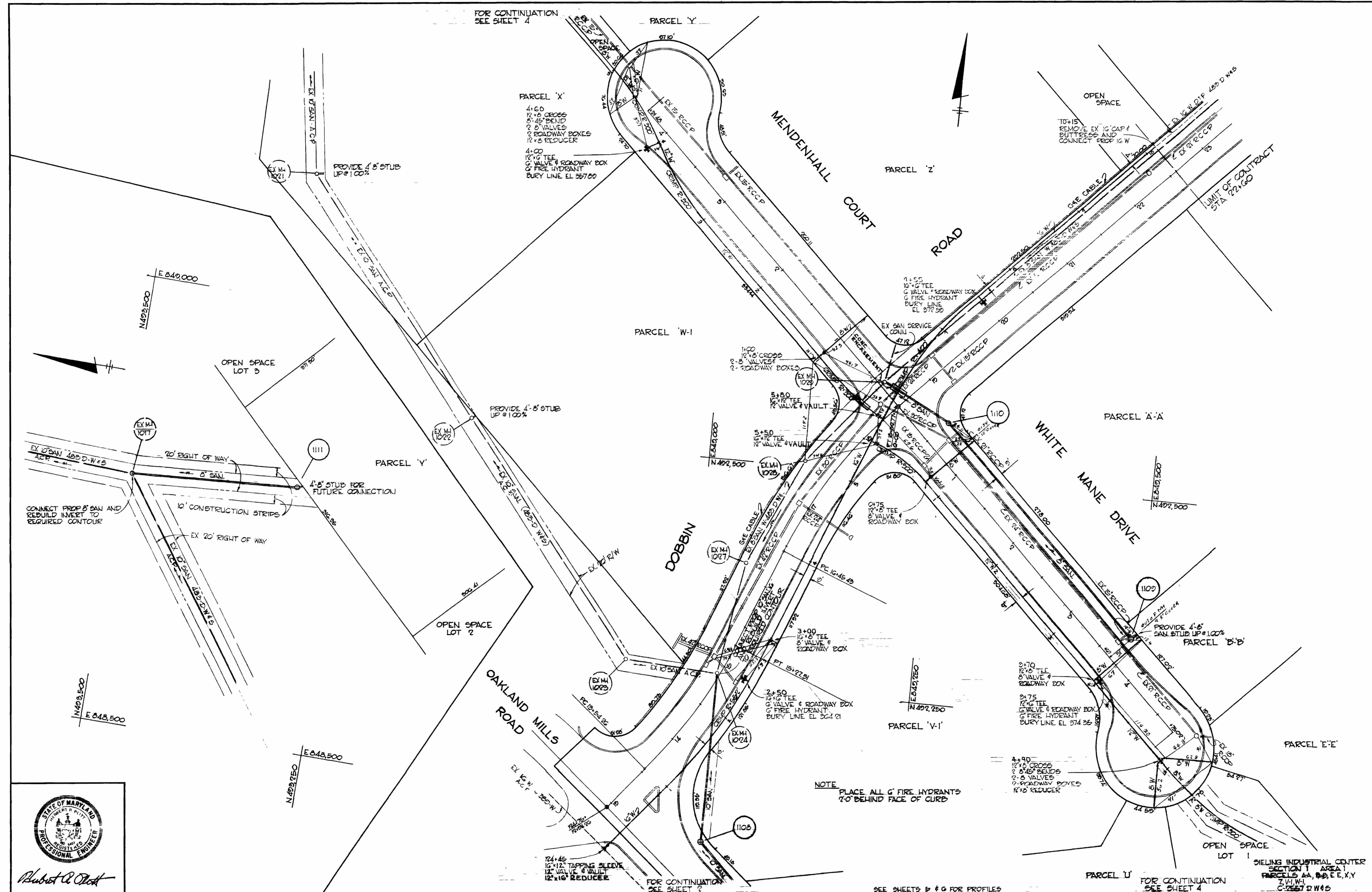
COLUMBIA
SIELING INDUSTRIAL CENTER
ELECTION DISTRICT GUILFORD NO. 6

DRAWING NO. 2 OF 6
SCALE 1"=50'

AS BUILT 12/2/74

WS 557 W&S/2

WS 557 WFS/3



GREEN ASSOCIATES, INC.
 CONSULTING ENGINEERS
 BALTIMORE, MARYLAND

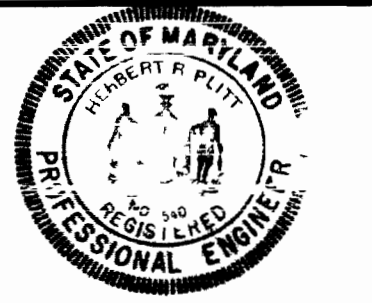
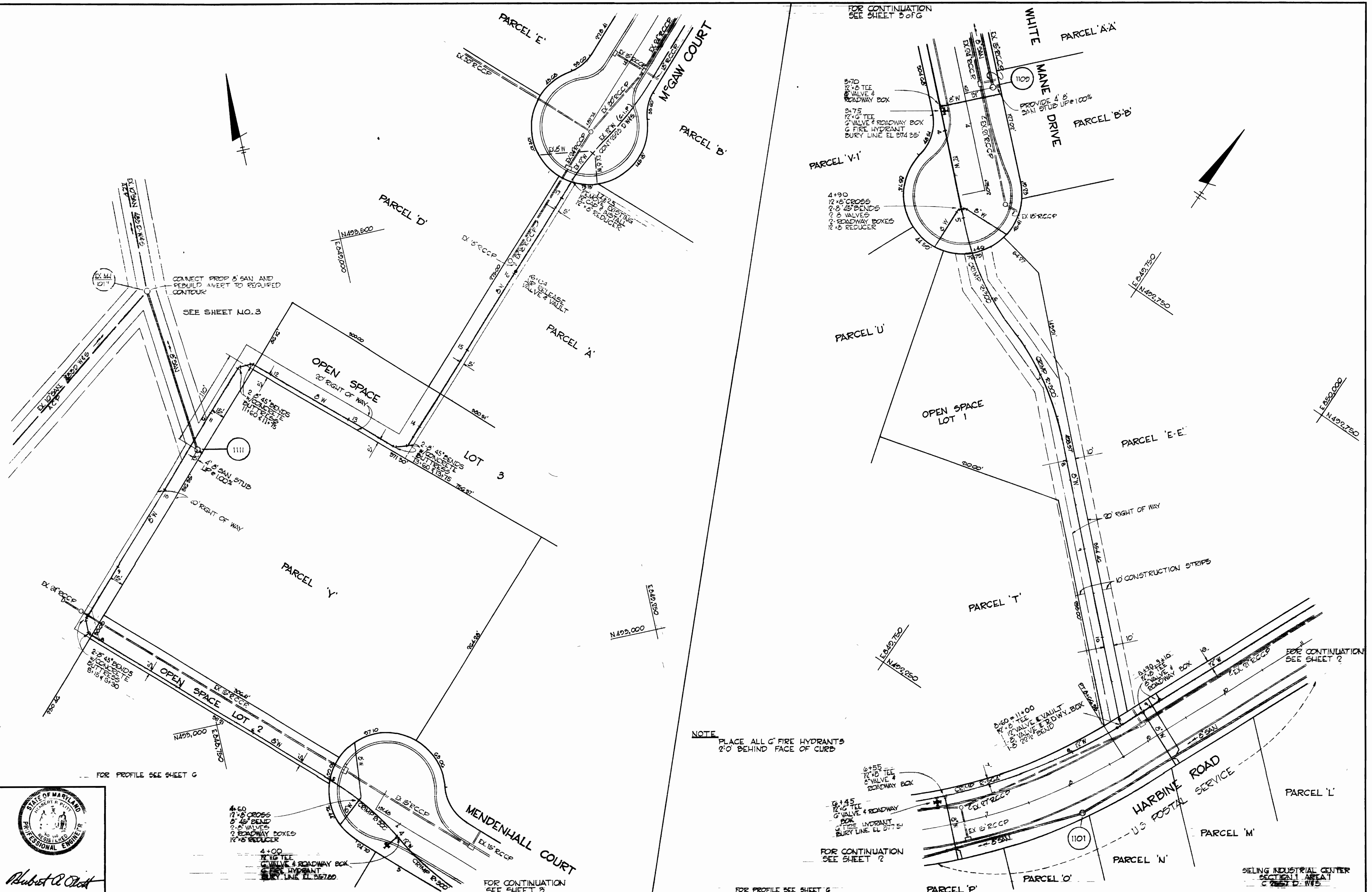
DEPARTMENT OF PUBLIC WORKS
 HOWARD COUNTY, MARYLAND
 2-15-74
W. O. ...
 CHIEF - BUREAU OF ENGINEERS

CONTRACT NO. 2557 D-W8S

PLAN OF
 WATER AND SEWER MAINS

COLUMBIA
 SIELING INDUSTRIAL CENTER
 ELECTION DISTRICT GUILFORD NO. 6

DRAWING
 NO. 3
 OF 6
 SCALE
 1"=50'



Robert C. Olt

GREEN ASSOCIATES, INC.
CONSULTING ENGINEERS
BALTIMORE, MARYLAND

DEPARTMENT OF PUBLIC WORKS
HOWARD COUNTY, MARYLAND
2-15-74
DATE

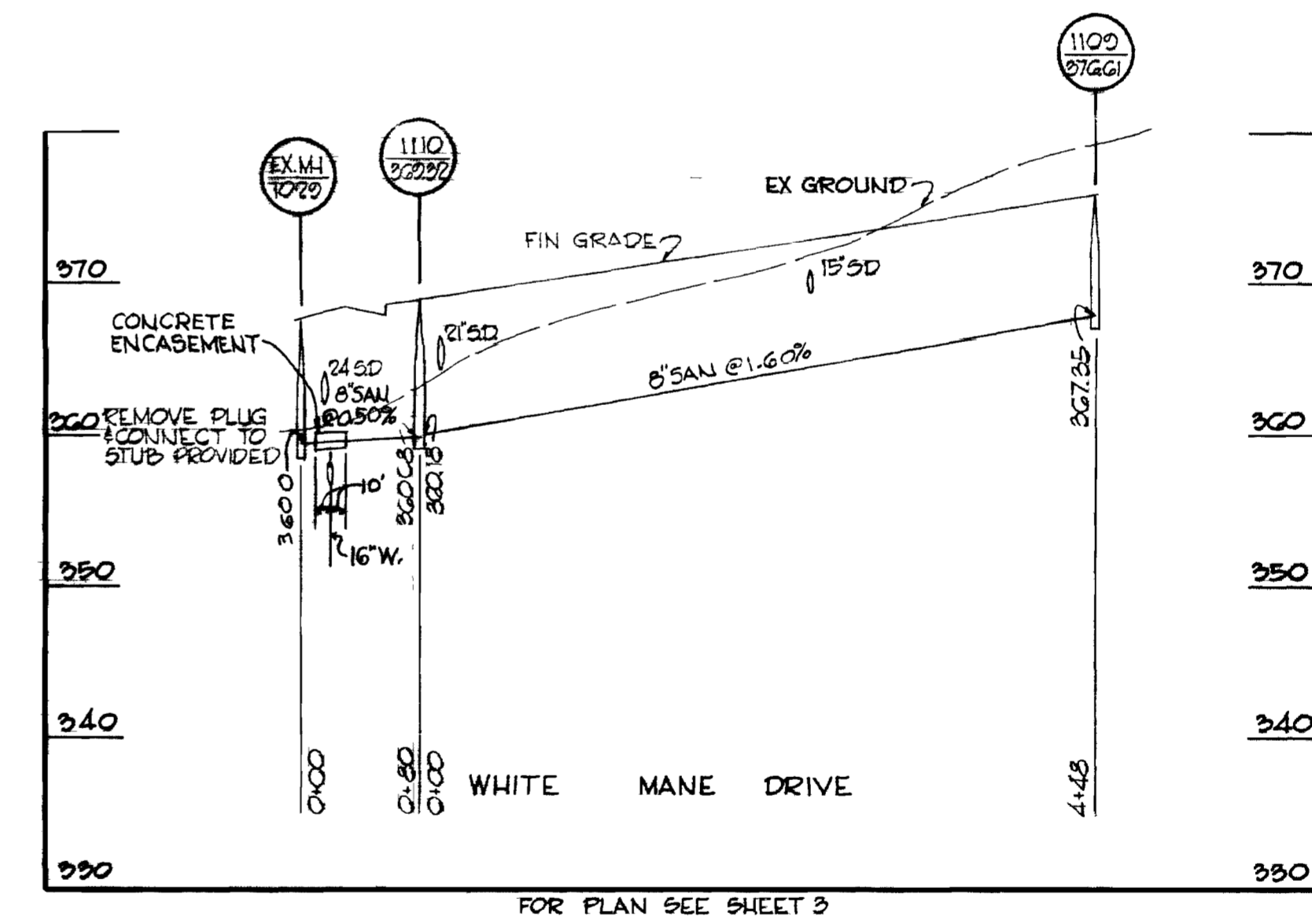
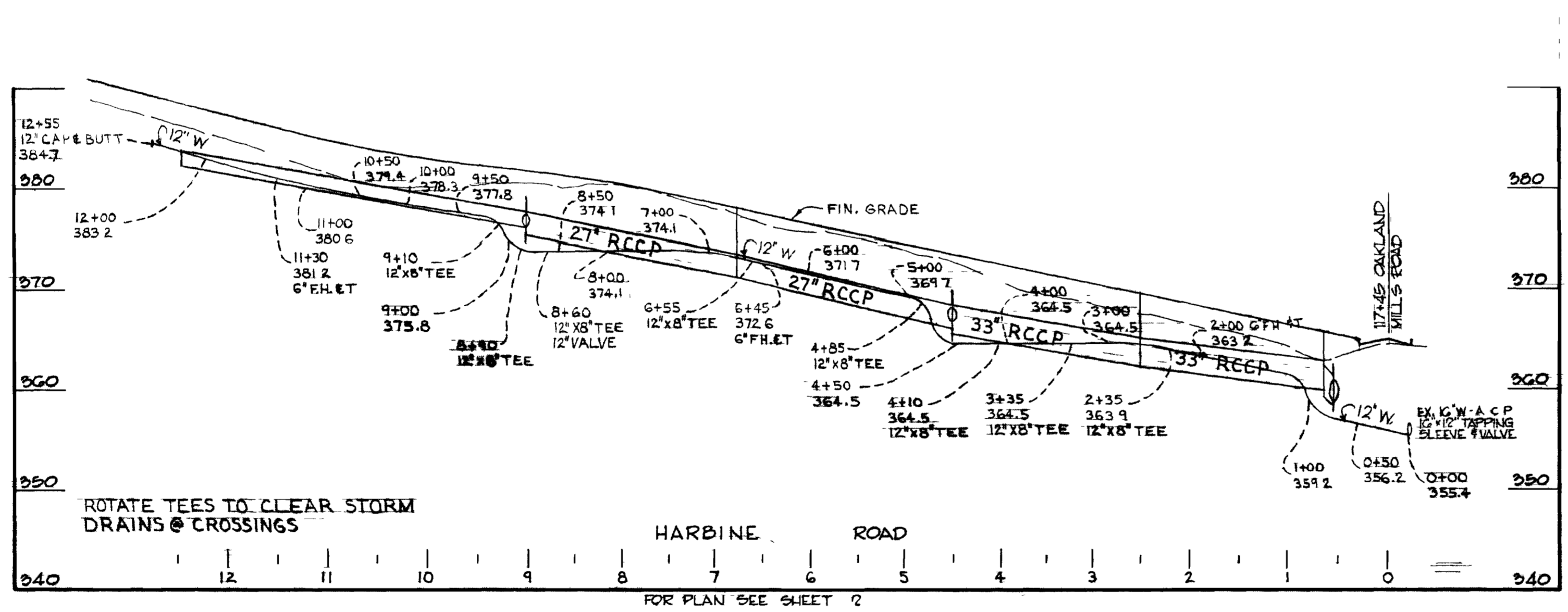
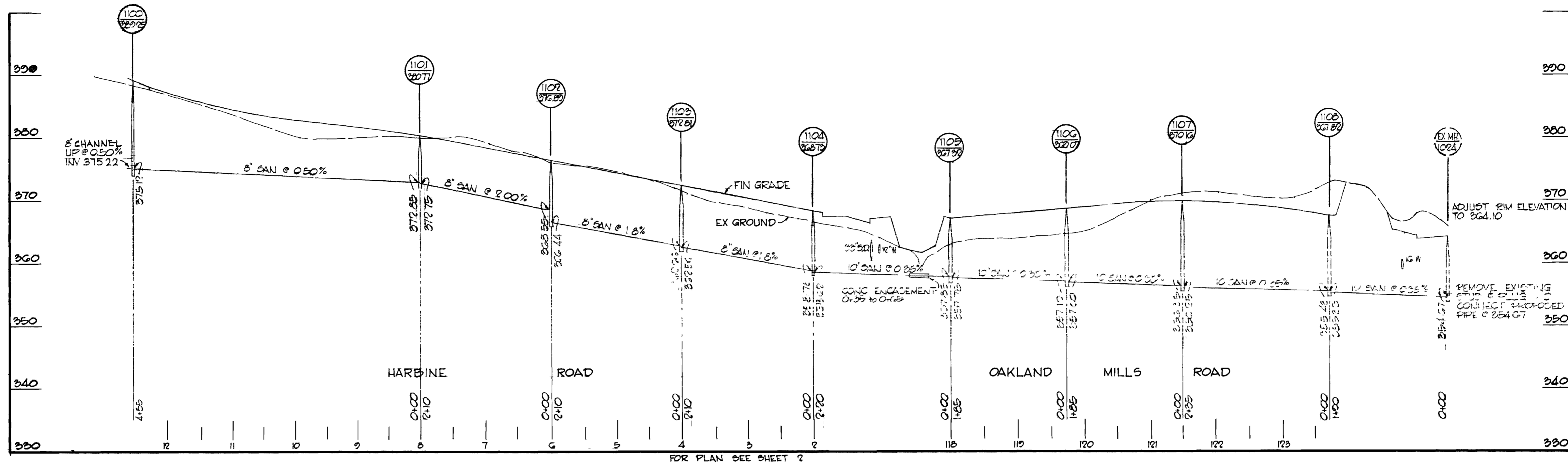
CONTRACT NO. 557 D-WB5

PLAN OF
WATER AND SEWER MAINS

COLUMBIA
SIELING INDUSTRIAL CENTER
ELECTION DISTRICT GUILFORD NO. 6

DRAWING NO. 4 OF 6
SCALE 1"=50'

AS BUILT 12/22/74



Robert A. O'Neil

GREEN ASSOCIATES, INC.
CONSULTING ENGINEERS
BALTIMORE, MARYLAND

DEPARTMENT OF PUBLIC WORKS
HOWARD COUNTY, MARYLAND
2-15-74
W. O. Palbert
CHIEF - BUREAU OF ENGINEERING

CONTRACT NO. 2557 D-W8S

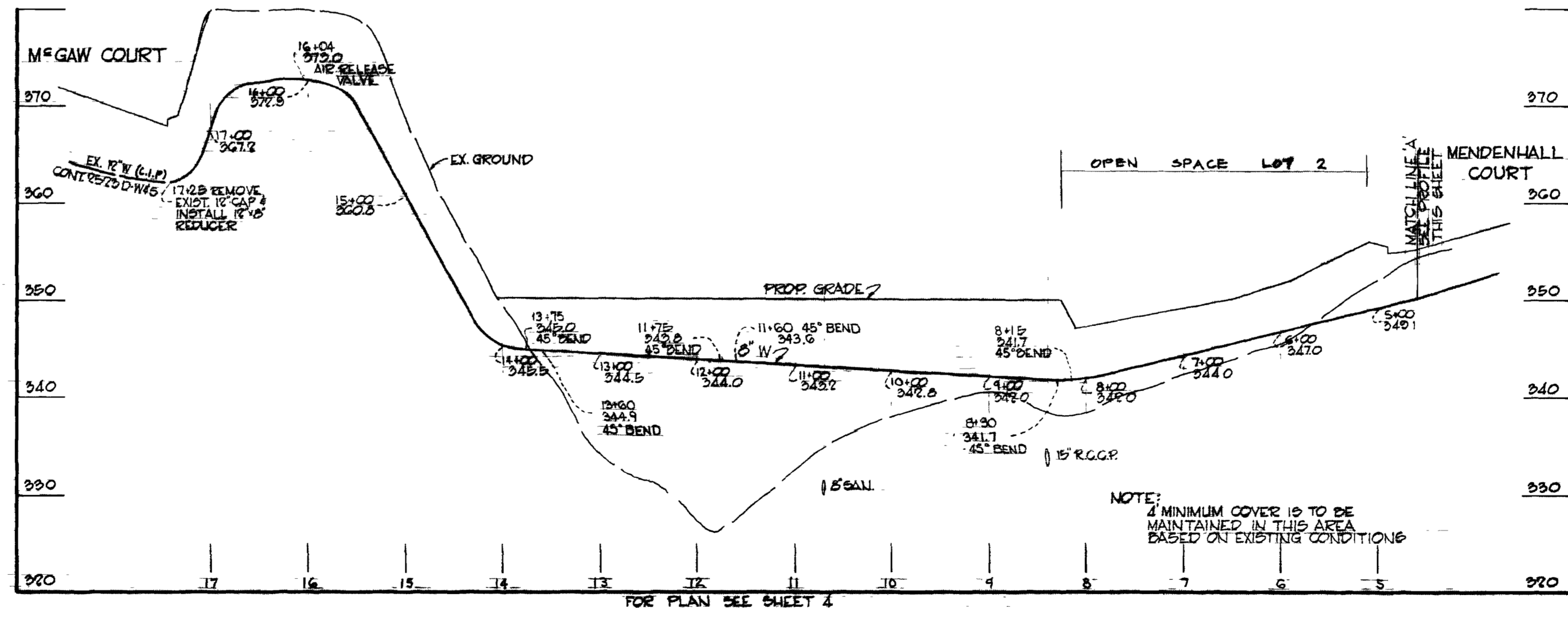
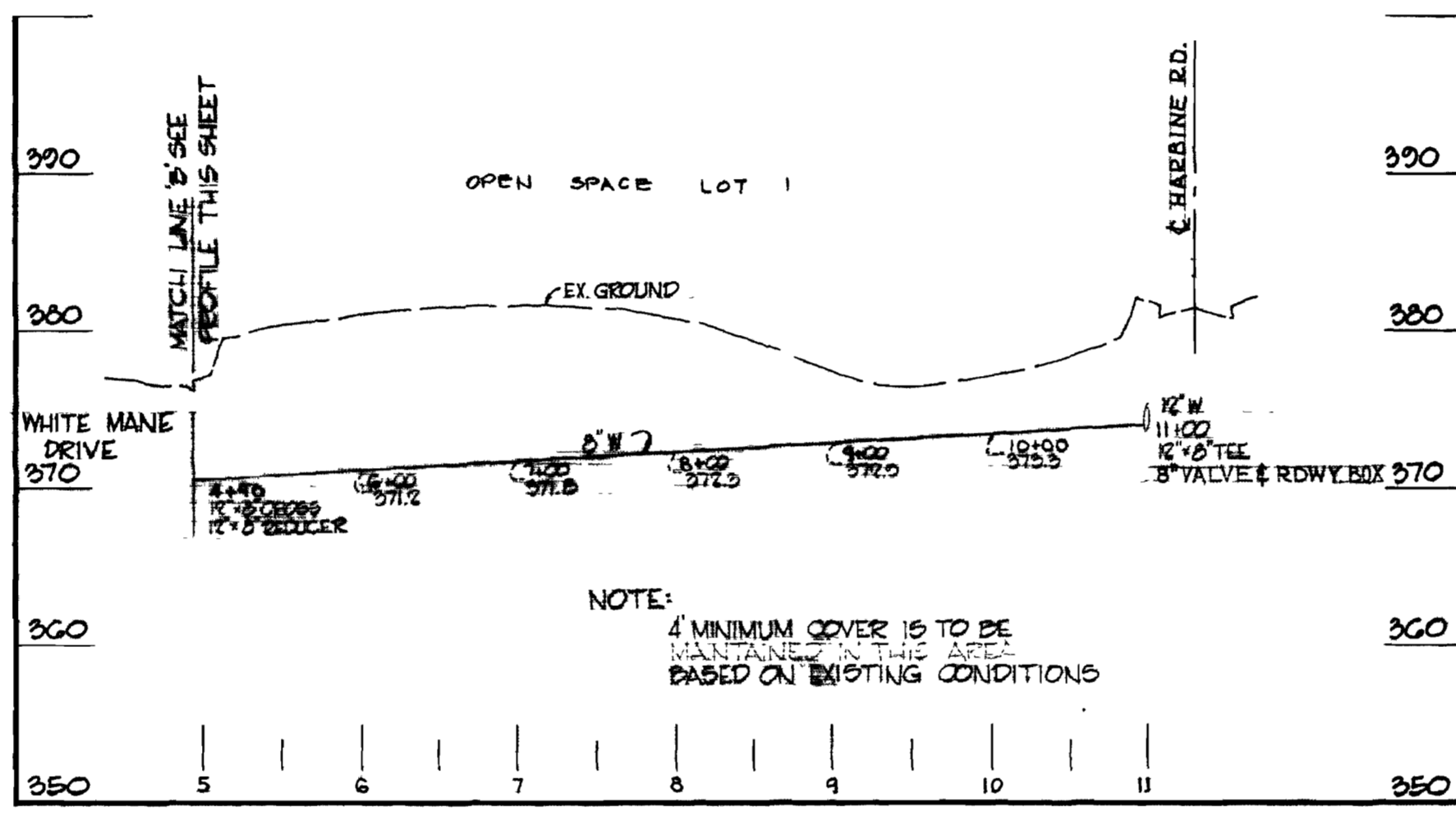
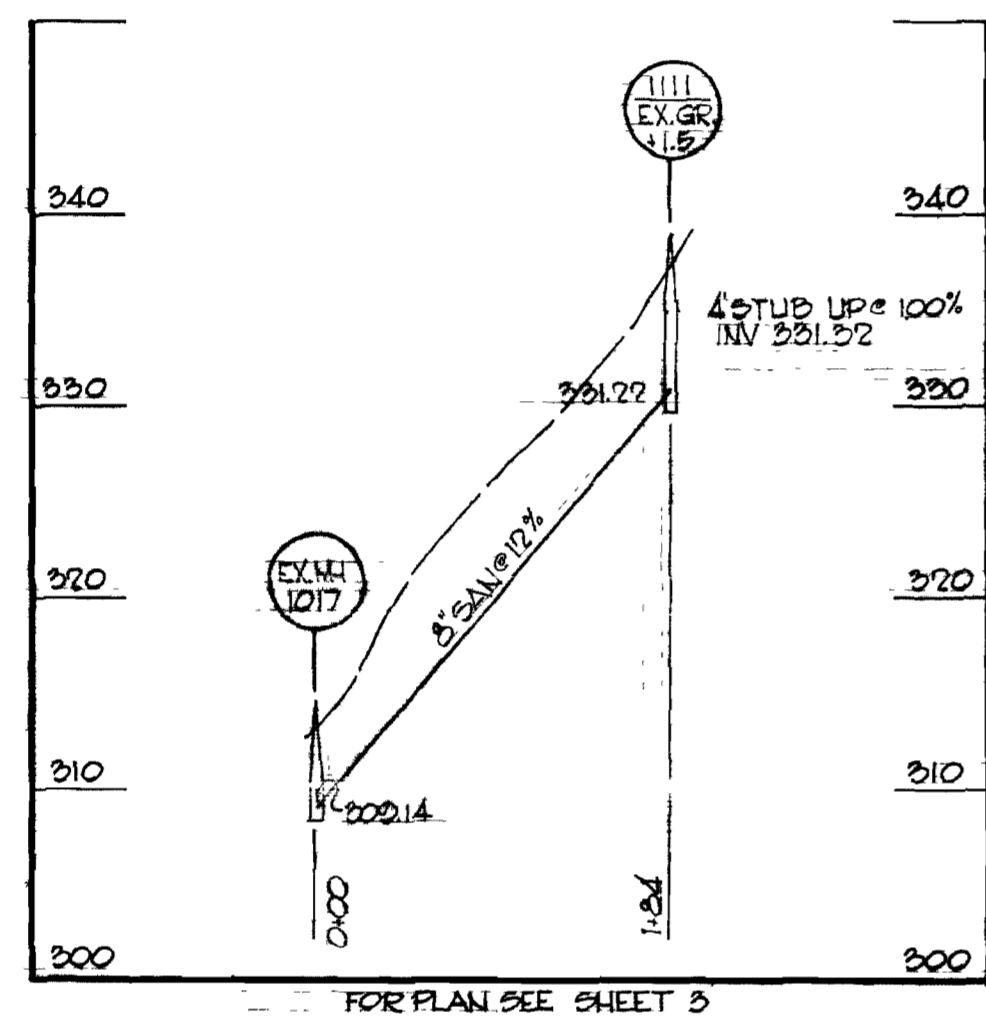
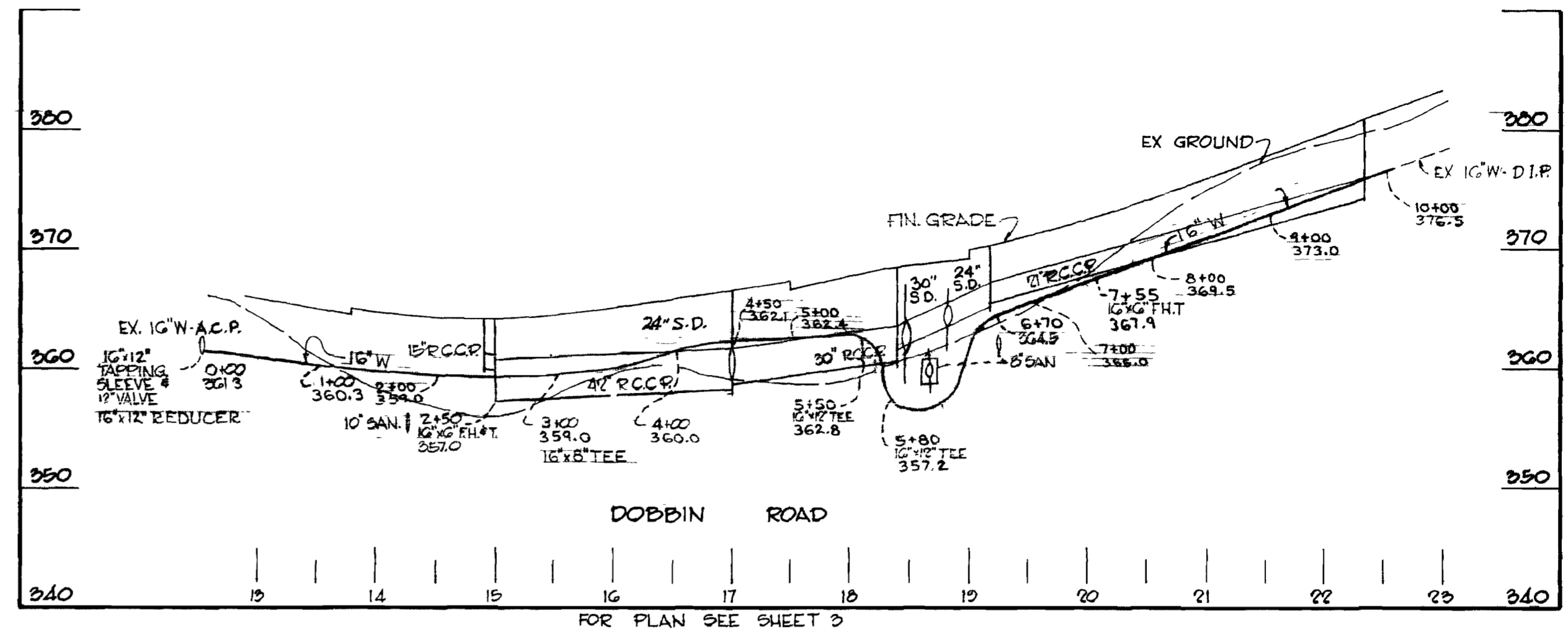
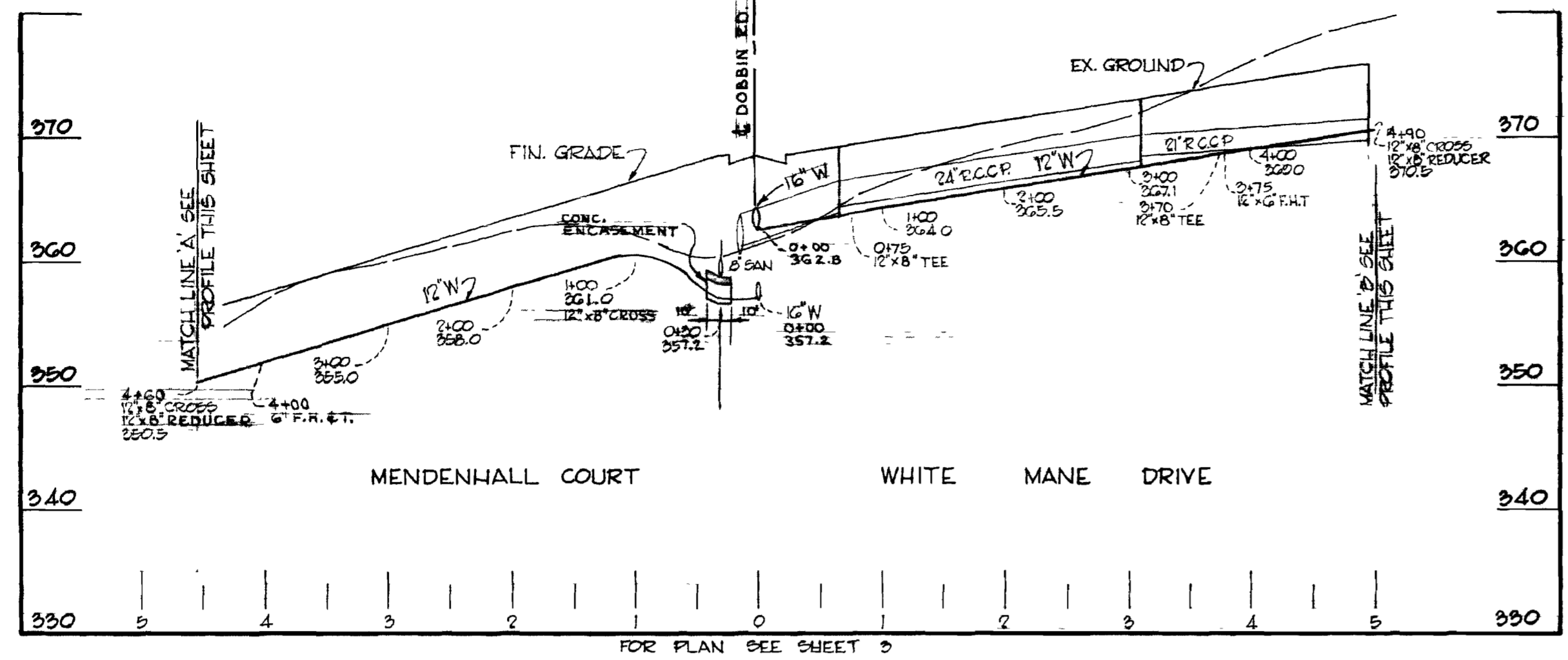
PROFILE OF WATER AND SEWER MAINS

COLUMBIA SIELING INDUSTRIAL CENTER ELECTION DISTRICT GUILFORD NO. 6

DRAWING NO. 5 OF 6

SCALE VERT 1"=10' HORZ 1"=100'

SIELING INDUSTRIAL CENTER SECTION 1 AREA 1 PROFILES C 2557 D-W8S



GREEN ASSOCIATES, INC.
CONSULTING ENGINEERS
BALTIMORE, MARYLAND

DEPARTMENT OF PUBLIC WORKS
HOWARD COUNTY, MARYLAND
DATE: 2-15-74
W. O. Pallant
CHIEF - BUREAU OF ENGINEERS

CONTRACT NO. 2557-D-WBS

PROFILE OF
WATER AND SEWER MAINS

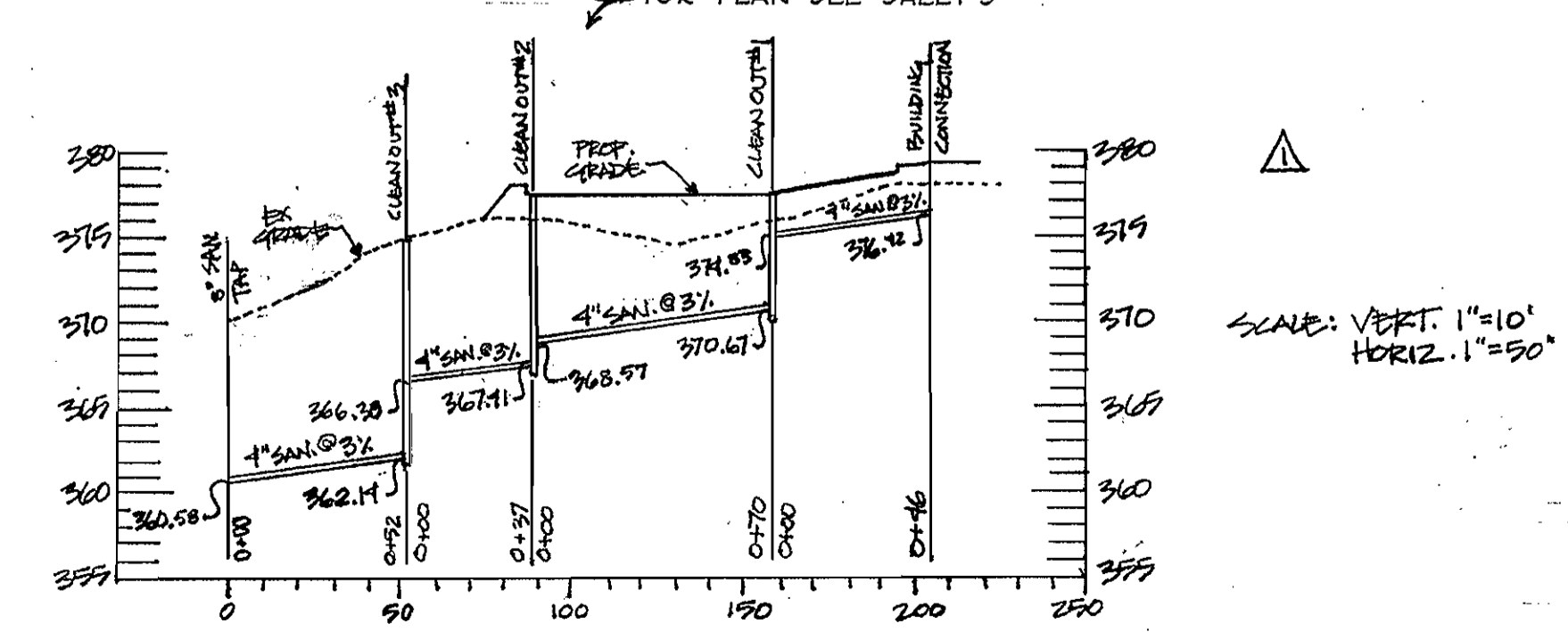
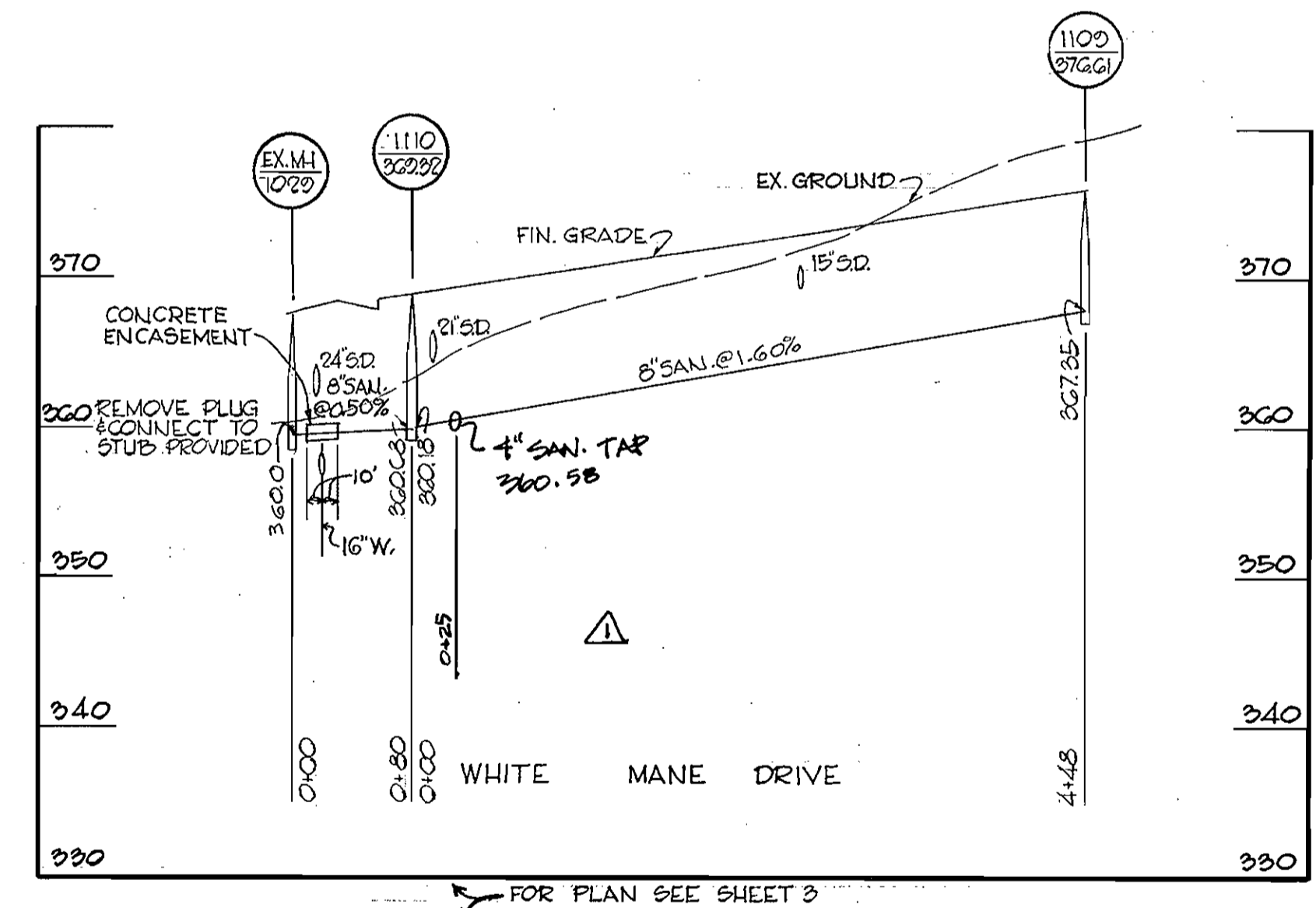
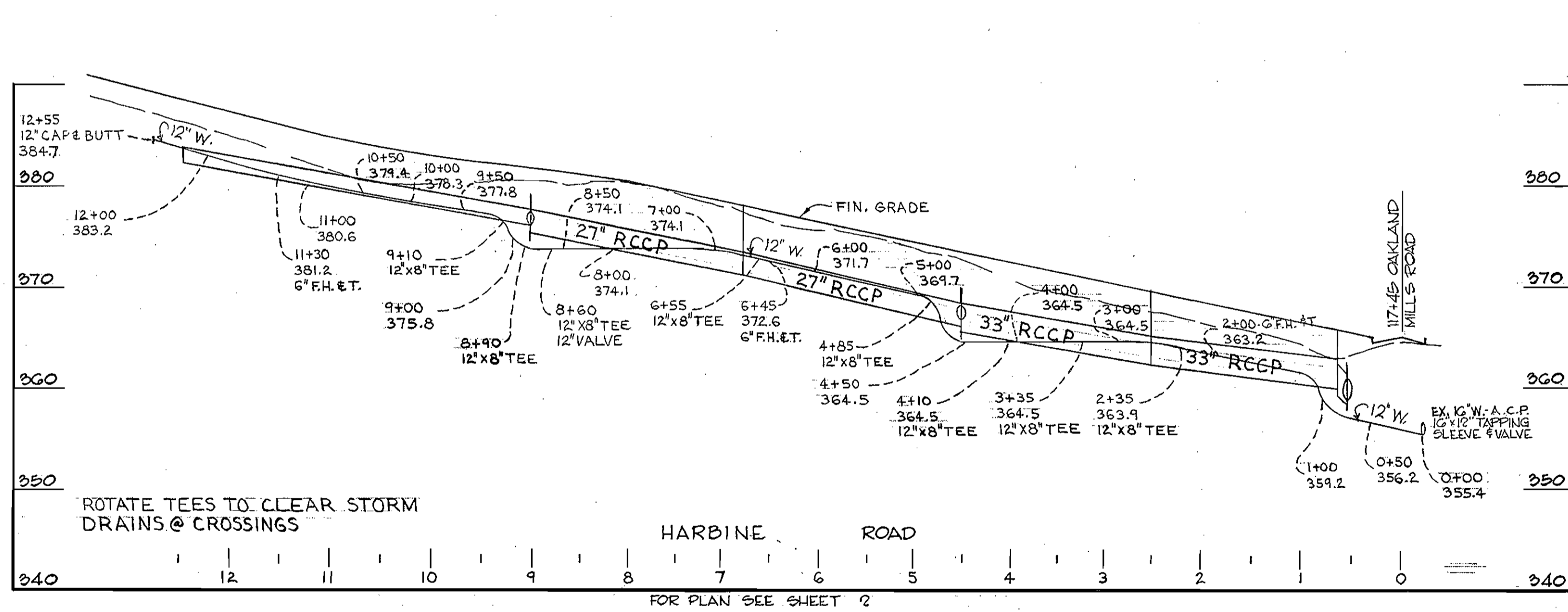
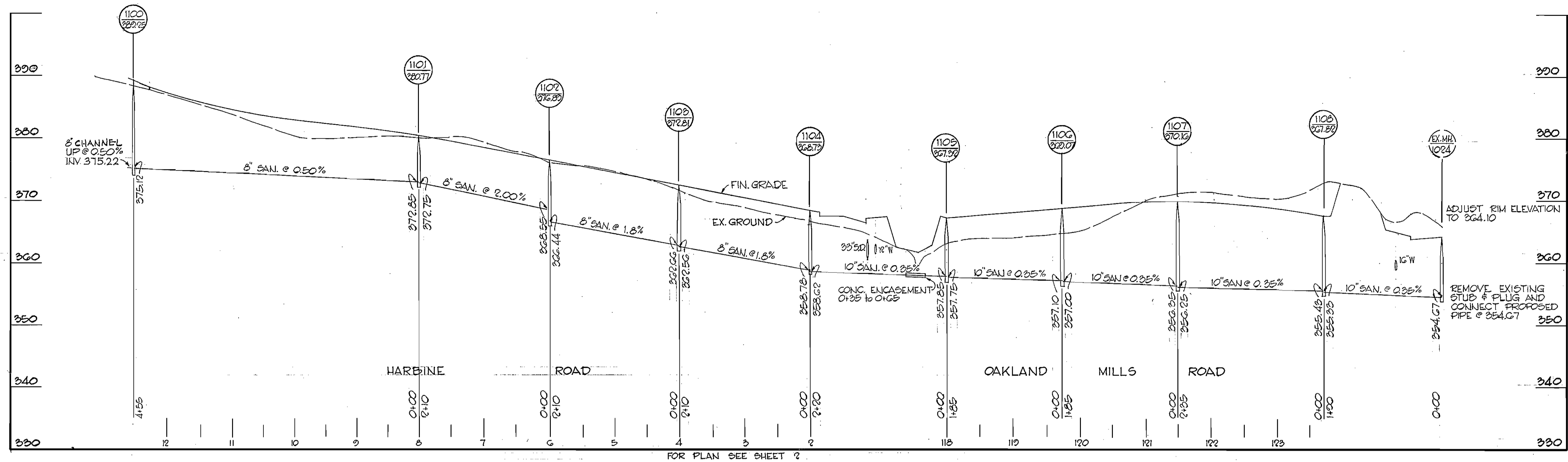
COLUMBIA
SIELING INDUSTRIAL CENTER
ELECTION DISTRICT GUILFORD NO. 6

DRAWING NO. 6 OF 6
SCALE VERT. 1"=10'
HORZ. 1"=100'

SIELING INDUSTRIAL CENTER
SECTION 1 AREA 1
PROFILES
C. 2557-D-WBS

WS 557 WBS/6

As Built



DATE:	DIVISION:	DESCRIPTION:
2/12/08	1	TAP INTO 8" SAN. W/ 4" SAN. FROM PARCEL 'A'-'A'

GREEN ASSOCIATES, INC.
CONSULTING ENGINEERS
BALTIMORE, MARYLAND

DEPARTMENT OF PUBLIC WORKS
HOWARD COUNTY, MARYLAND
2-13-74
W O Olsch
CHIEF - BUREAU OF ENGINEERING

CONTRACT NO. 2557 D-W&S

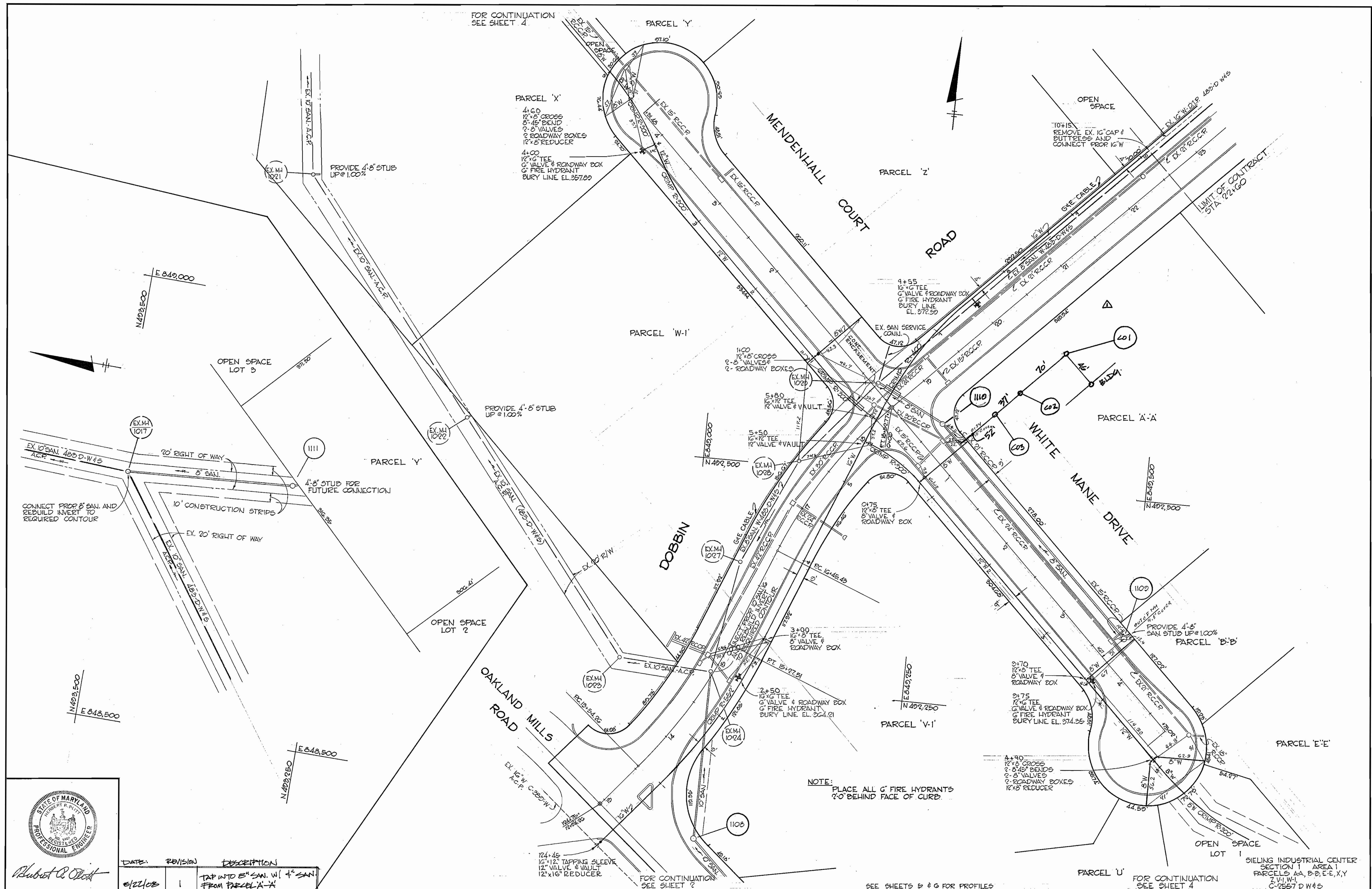
PROFILE OF WATER AND SEWER MAINS

COLUMBIA SIELING INDUSTRIAL CENTER ELECTION DISTRICT GUILFORD NO. 6

DRAWING NO. 5 OF 6

SCALE VERT. 1"=10' HORIZ. 1"=50'

SIELING INDUSTRIAL CENTER SECTION 1 AREA 1 PROFILES C 2557 D-W&S



DATE	REVISION	DESCRIPTION
6/21/08	1	TAP INTO 8" SAN. W/ 4" SAN. FROM PARCEL A-A

GREEN ASSOCIATES, INC.
CONSULTING ENGINEERS
BALTIMORE, MARYLAND

DEPARTMENT OF PUBLIC WORKS
HOWARD COUNTY, MARYLAND
2-15-74
DATE

W O Oltch
CHIEF - BUREAU OF ENGINEERING

CONTRACT NO. 2557 D-W8 S

PLAN OF
WATER AND SEWER MAINS

COLUMBIA
SIELING INDUSTRIAL CENTER
ELECTION DISTRICT GUILFORD NO. 6

DRAWING NO. 3 OF 6

SCALE 1"=50'

WS 557 wfs/3