

**VICINITY MAP**  
Scale: 1"=2000'

**GENERAL NOTES**

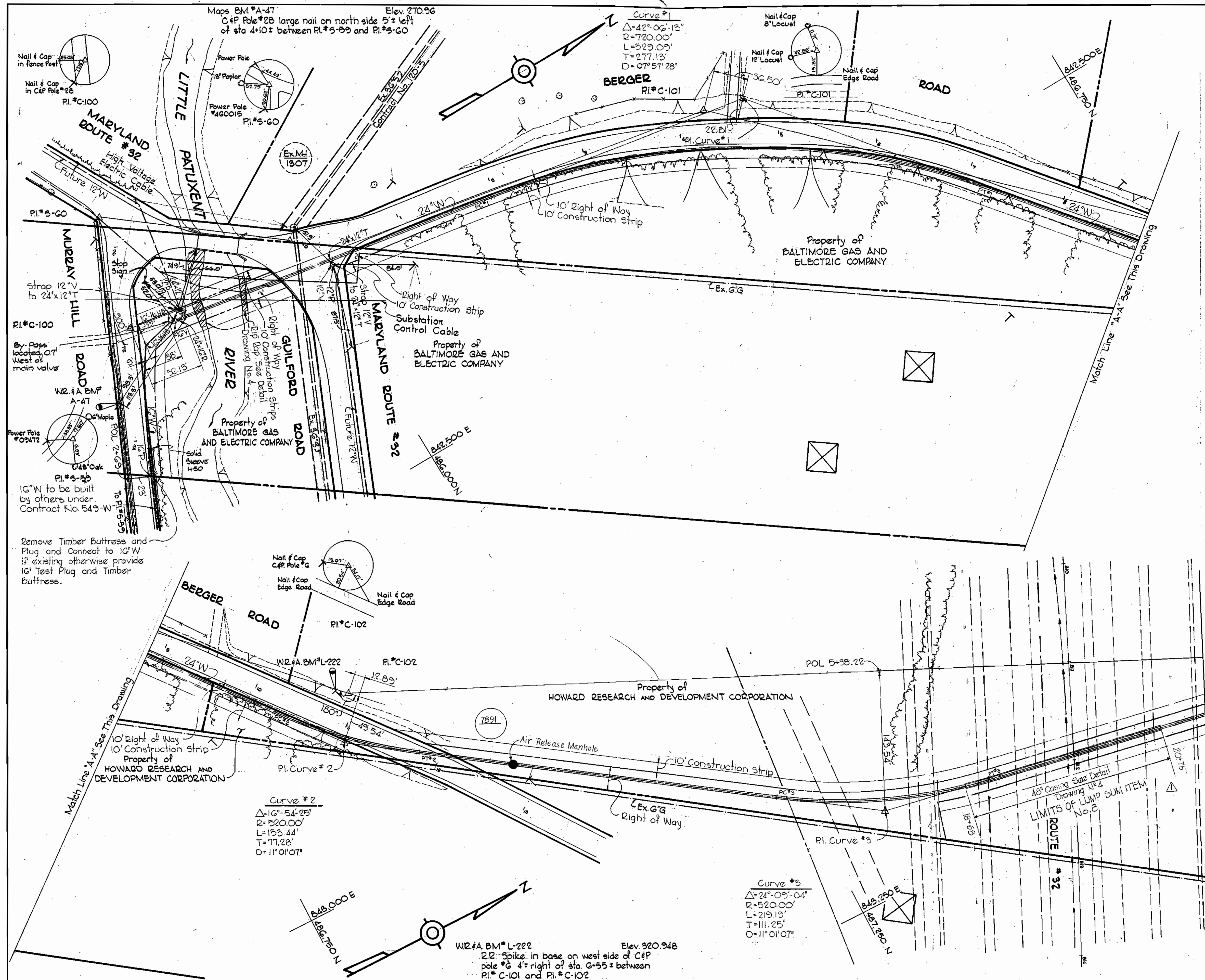
1. Approximate location of existing mains are shown. The Contractor shall take all necessary precautions to protect existing mains and services and maintain uninterrupted supply. Any damage incurred shall be repaired immediately.
2. All pipe elevations shown are invert elevations.
3. The Contractor shall locate existing utilities a minimum of two weeks in advance of construction operations in vicinity of utilities.
4. For all standard details see standards bound in Specifications.
5. Block all fittings with concrete, see standards bound in Specifications.
6. All Horizontal and Vertical controls are based on Maryland State Datum.
7. 16-inch valves shall have a by-pass without gearing, 20-inch valves shall have by-pass and gearing.

Δ	3-7-74	Revised Crossing of Proposed Relocate Rt. 32
Do.	Date	

AS-BUILT  
Stakeout in F.B.# 5594  
Diary in F.B.# 5595



*Kenneth A. McCord*  
Water Main From Rt. 32 to Snowden River Pkwy.  
Project No. WP 8074  
Contract No. 550-W



**WHITMAN, REQUARDT & ASSOCIATES**  
ENGINEERS  
1304 ST. PAUL ST.  
BALTIMORE, MARYLAND

**DEPARTMENT OF PUBLIC WORKS**  
HOWARD COUNTY, MARYLAND  
12-13-73  
*W.O. Falvat*  
CHIEF BUREAU OF ENGINEERING

**CONTRACT NO. 550-W**

**PLAN OF WATER MAINS**

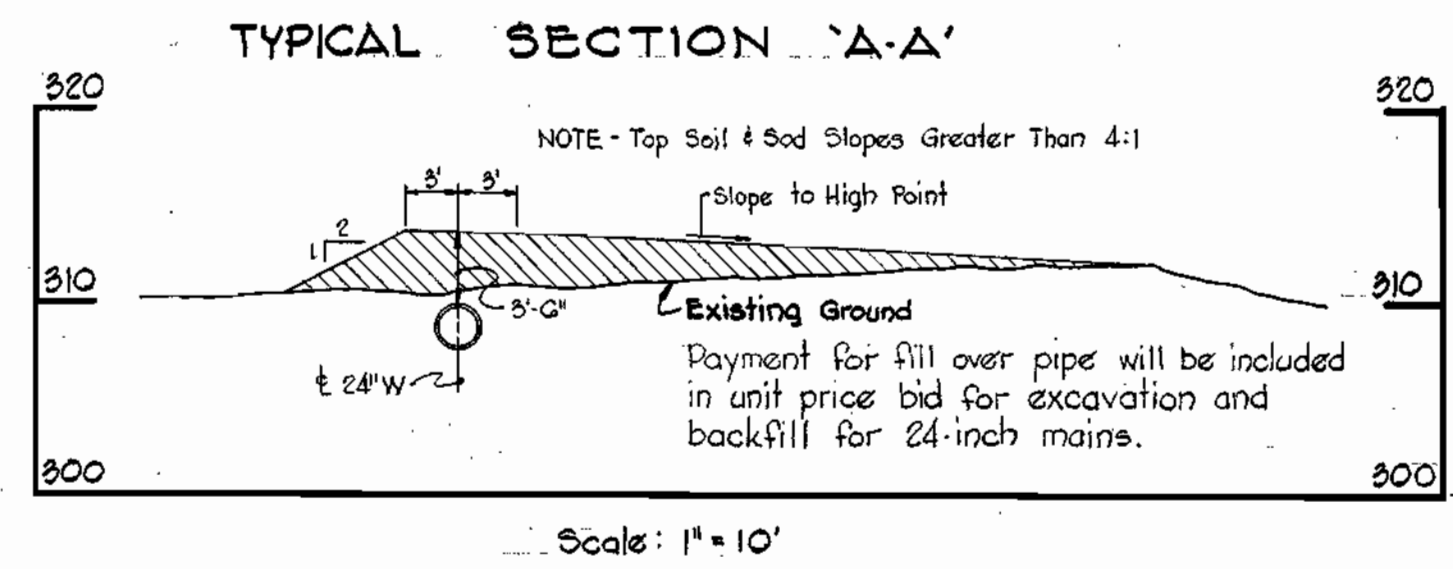
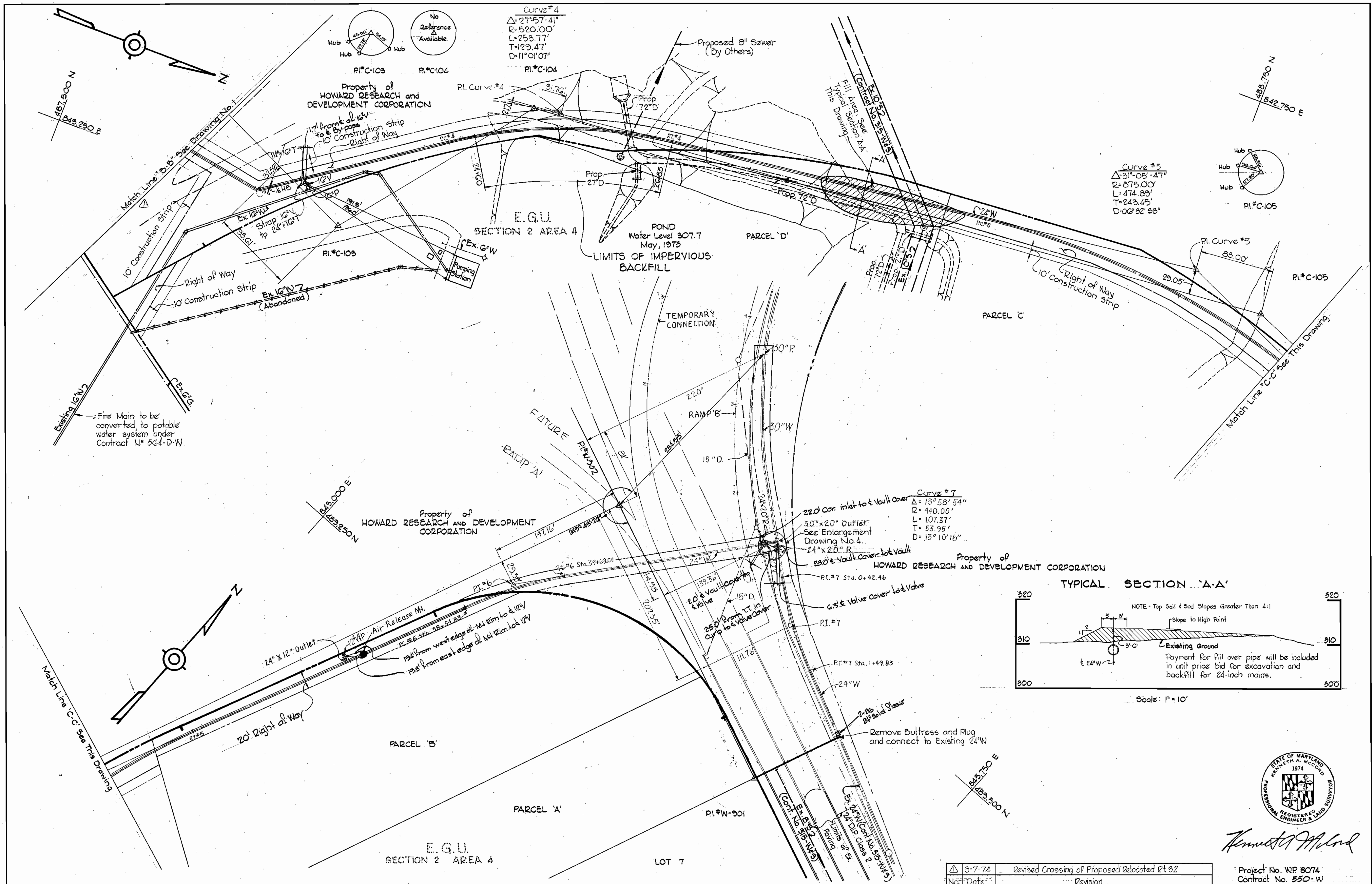
**ELECTION DISTRICT GUILFORD NO. 6**

**DRAWING NO. OF 4**  
**SCALE AS SHOWN**  
48B-(4)  
48C-(5)  
48C-(4)

W. O. 6601-2

NOV 13, 1974  
AS BUILT

WS 550-w/1



*Kenneth A. McCord*

Δ 3-7-74 No. Date Revised Crossing of Proposed Relocated Rt. 32 Revision	Project No. W.P. 8074 Contract No. 550-W
<b>ELECTION DISTRICT</b> <b>GUILFORD NO. 6</b>	<b>DRAWING</b> <b>NO. 2</b> <b>OF 4</b>
<b>SCALE</b> <b>1" = 50'</b>	NOV 13, 1974 AS BUILT PB #5427

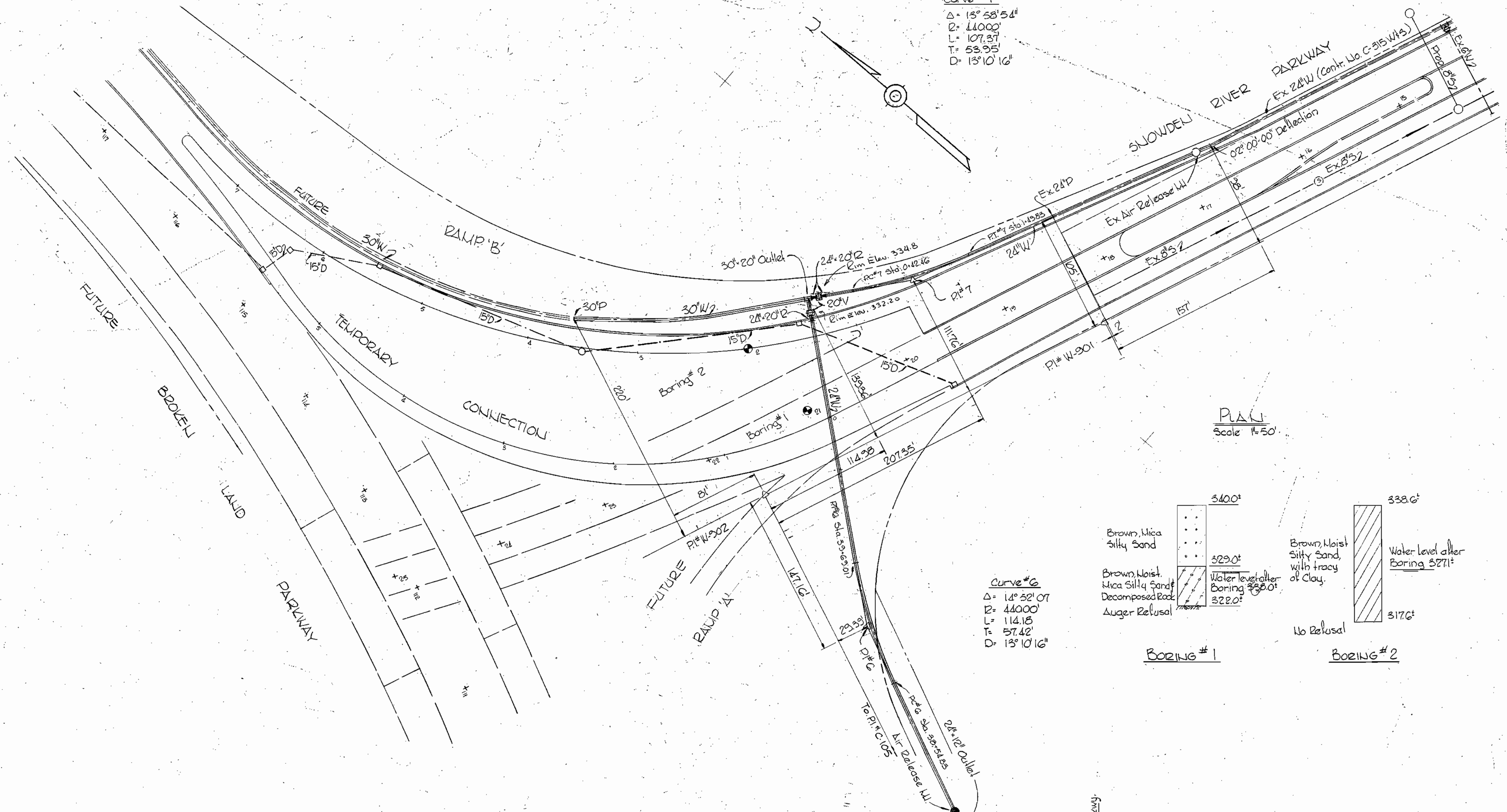
<b>WHITMAN, REQUARDT &amp; ASSOCIATES</b> ENGINEERS 1304 ST. PAUL ST. BALTIMORE, MARYLAND	<b>DEPARTMENT OF PUBLIC WORKS</b> HOWARD COUNTY, MARYLAND 12-13-73 DATE <i>W. O. Gilbert</i> CHIEF BUREAU OF ENGINEERING	<b>CONTRACT NO. 550-W</b>	<b>PLAN OF</b> <b>WATER MAINS</b>
--	---	---------------------------	--------------------------------------

W. O. 6601-2

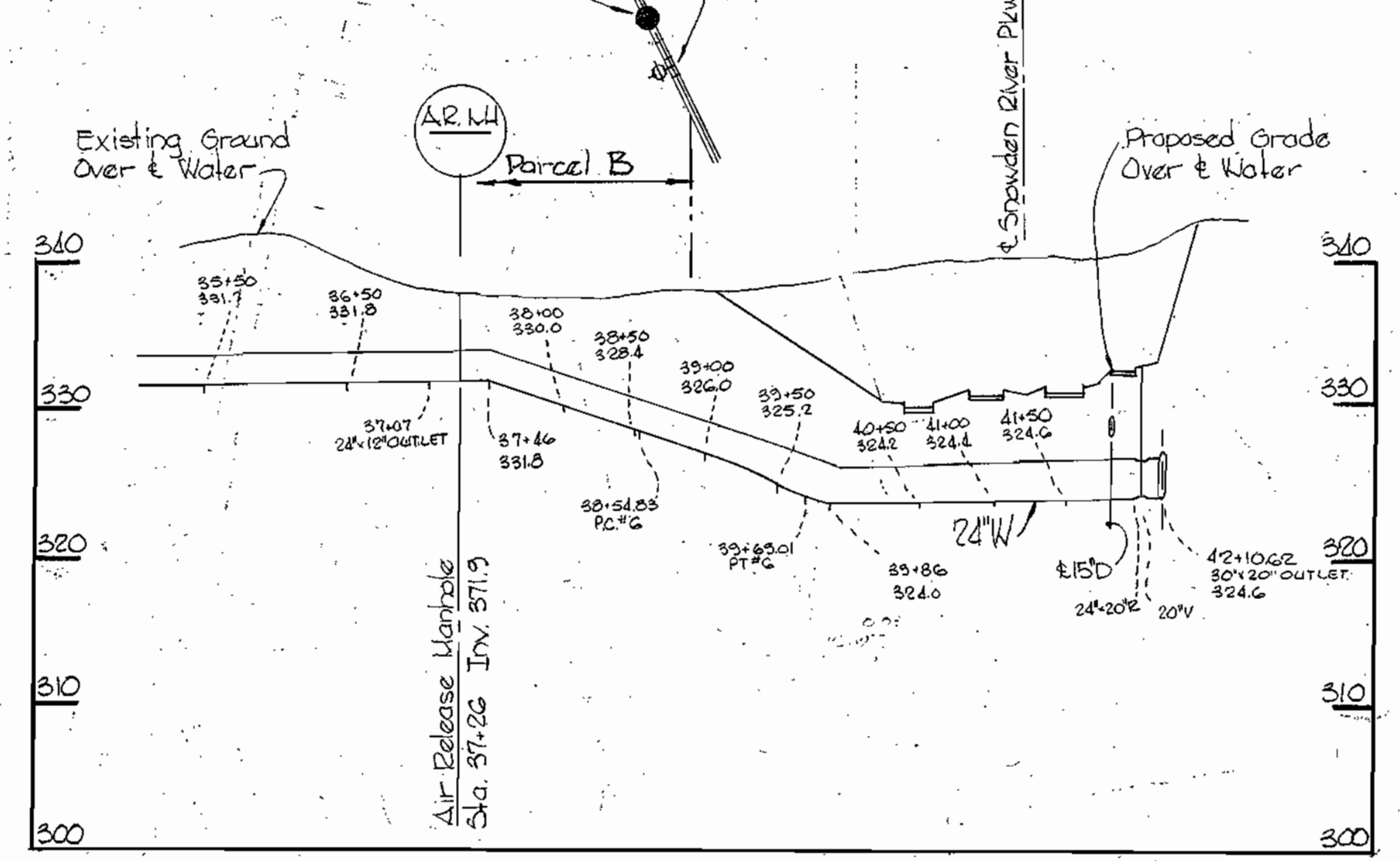
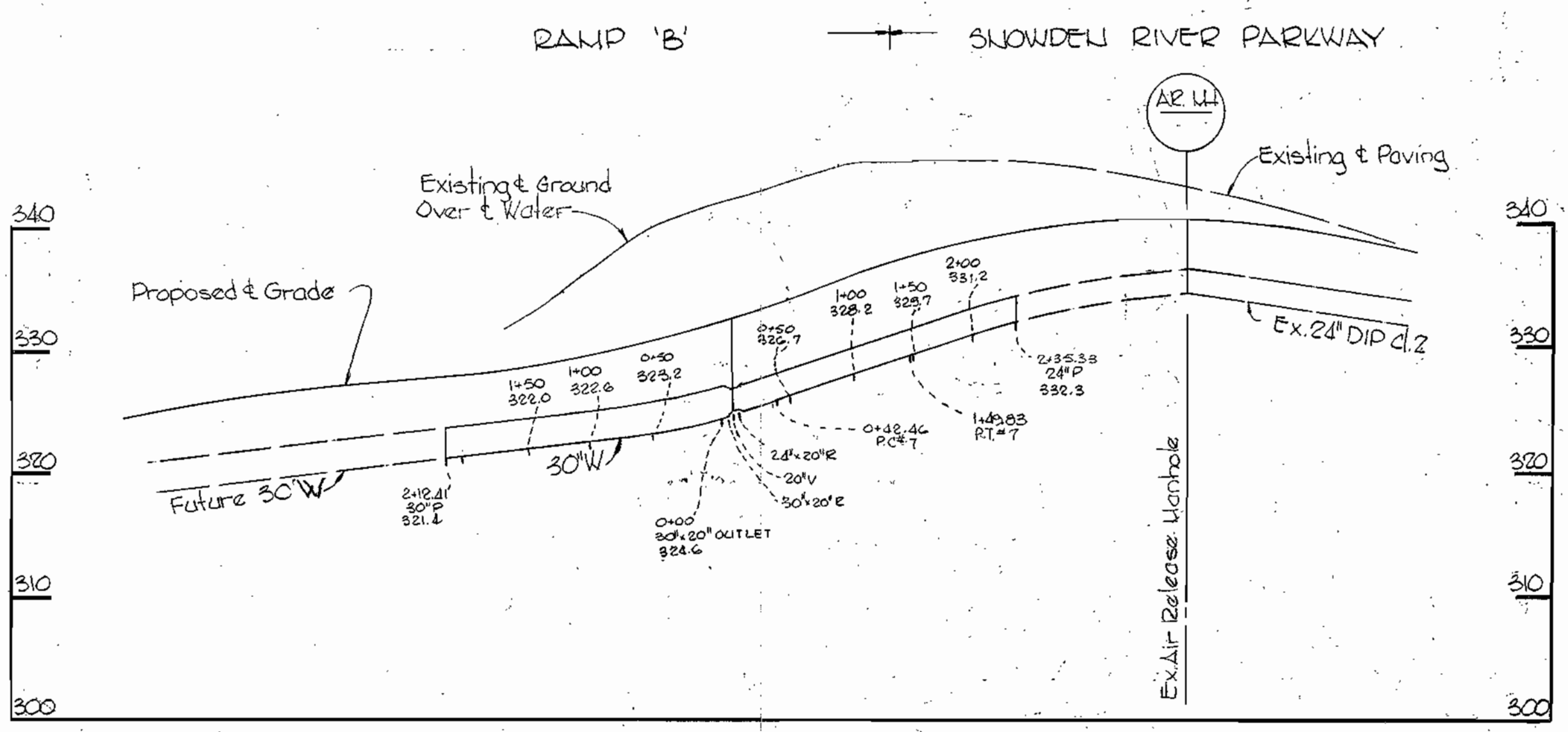
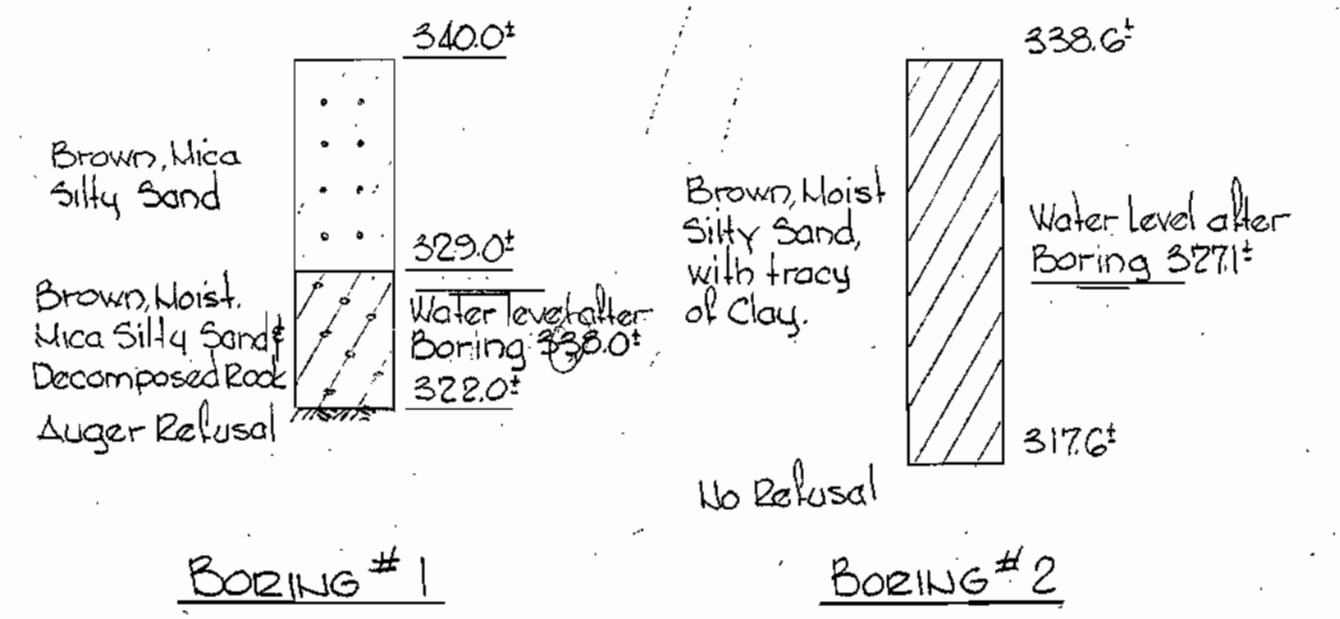
WS 550-w/2

BRUNING 44-510 18392

Curve #7  
 $\Delta = 13^\circ 58' 54''$   
 $R = 11000'$   
 $L = 107.37'$   
 $T = 53.95'$   
 $D = 13^\circ 10' 16''$



PLAN  
 Scale 1"=50'



PROFILE  
 Scale: H. 1"=100'  
 V. 1"=10'

Note:  
 For 'As-Built' information  
 See Drawing Nos 3 and 4.

Note:  
 Water Main design is based  
 on highway drawings by  
 GREEN ASSOCIATES received  
 May 13, 1974.



*Kenneth A. McLeod*

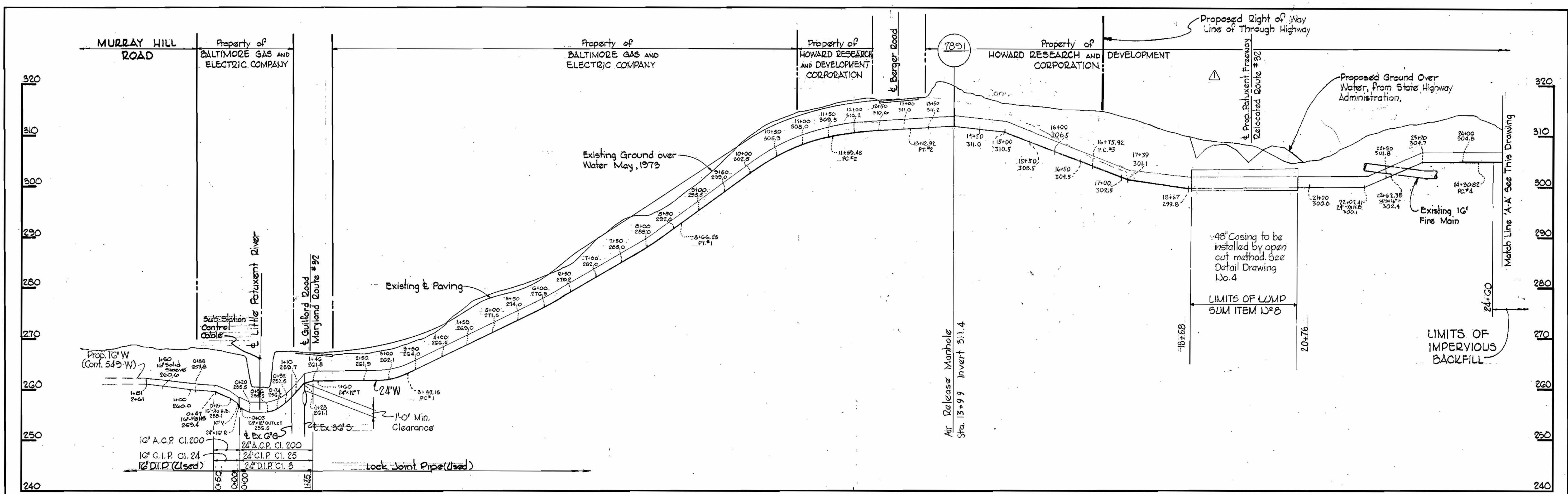
WS 550-W/2-A

WHITMAN, REQUARDT AND ASSOCIATES  
 ENGINEERS  
 1304 ST. PAUL STREET  
 BALTIMORE, MARYLAND  
 MAY 22 1974  
 Scale: As-Shown

HOWARD COUNTY  
 CONTRACT NO. 550-W

REVISED WATER MAIN  
 AT INTERCHANGE  
 SNOWDEN RIVER AND BROKEN LAND PARKWAYS

DRAWING  
 # 2-A  
 OF 4



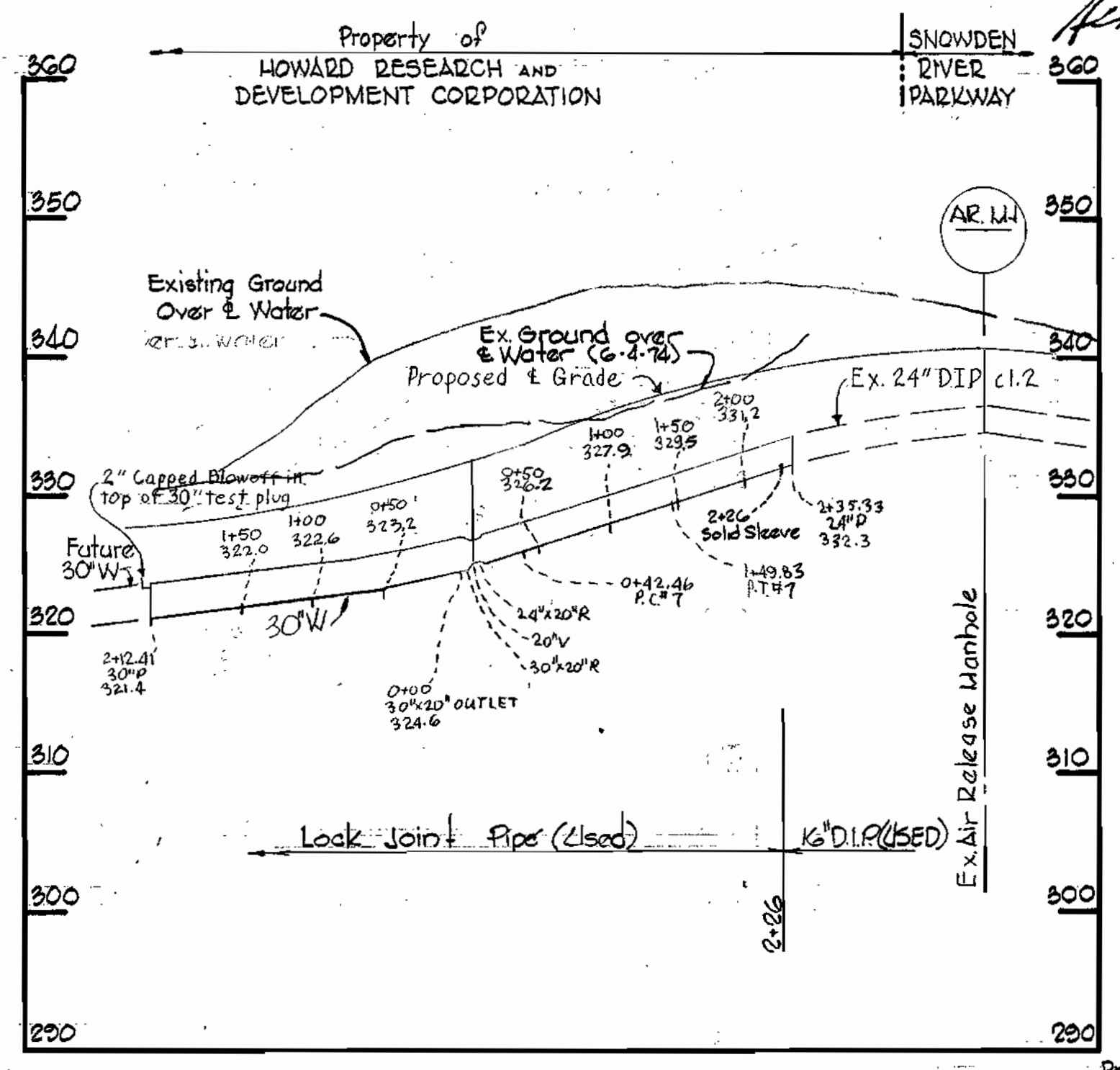
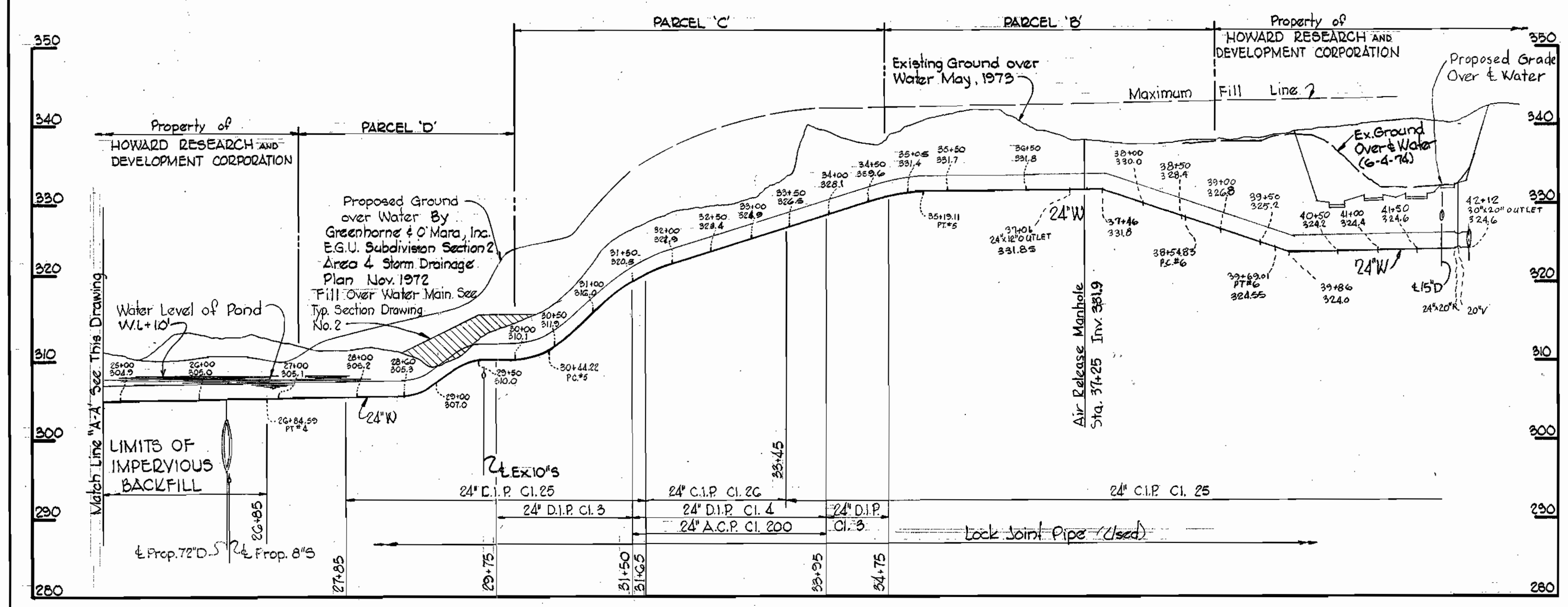
Note:  
 Water Main design is based on highway drawings by GREEN ASSOCIATES received May 13, 1974.

3-7-74	Revised Crossing of Proposed Relocated Rt 82
No. Date	Revision

SNOWDEN RIVER PARKWAY



*Kenneth A. McCord*



Project No. WP 8074  
 Drawing No. 550-W

WHITMAN, REQUARDT & ASSOCIATES  
 ENGINEERS  
 1304 ST. PAUL ST.  
 BALTIMORE, MARYLAND

DEPARTMENT OF PUBLIC WORKS  
 HOWARD COUNTY, MARYLAND  
 12-13-73  
*W. O. Felber*  
 CHIEF BUREAU OF ENGINEERING

CONTRACT NO. 550-W

PROFILE OF  
 WATER MAINS

ELECTION DISTRICT  
 GUILFORD NO. 6

DRAWING NO. 3 OF 4  
 SCALE H: 1"=100'  
 V: 1"=10'

W. O. 6601-2

NOV. 13, 1974

AS BUILT

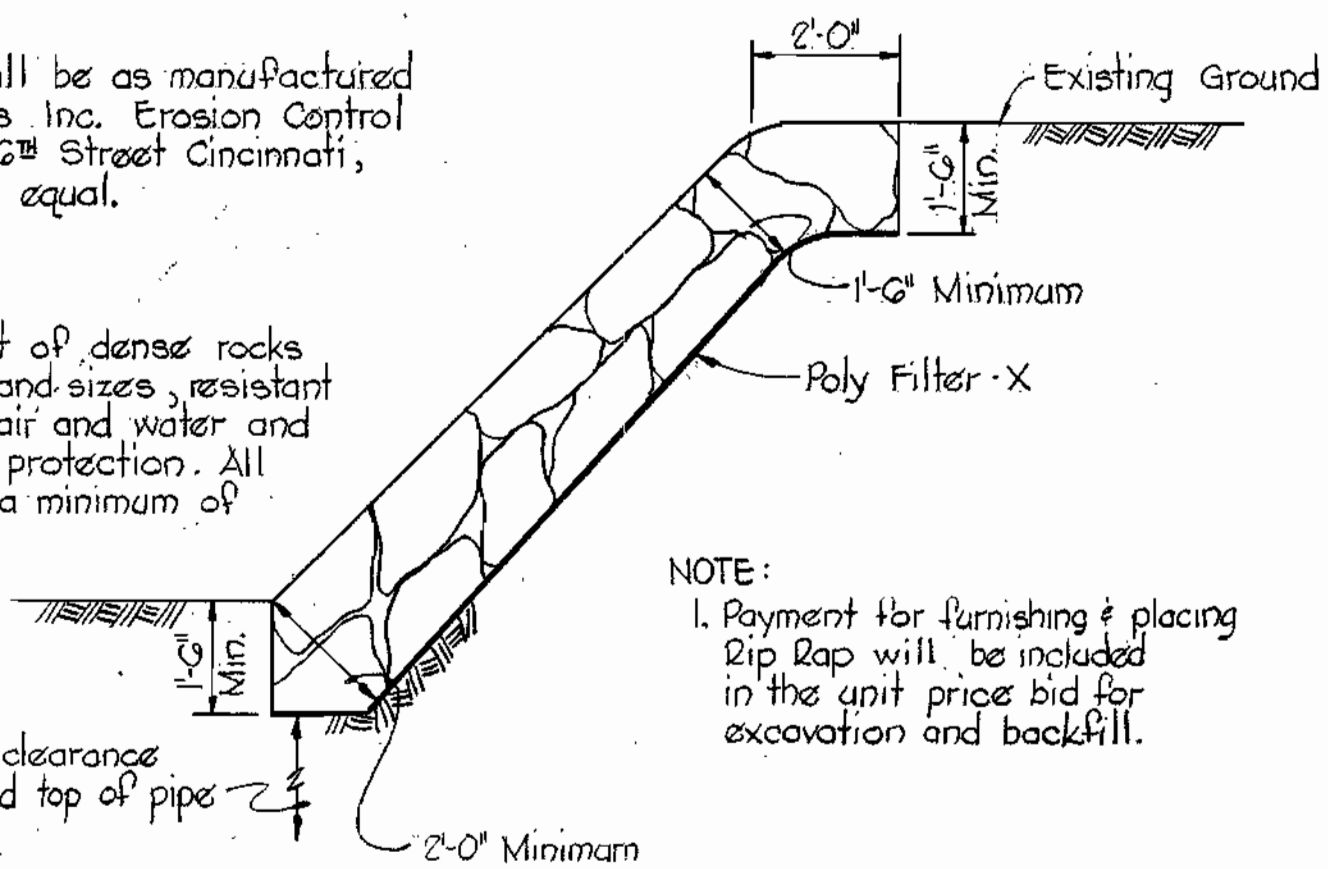
WS 550-W/3

PRINTING 44-510 18392

Note:  
Poly Filter-X shall be as manufactured by Carthage Mills Inc. Erosion Control Division, 124 W. GG<sup>th</sup> Street Cincinnati, Ohio or approved equal.

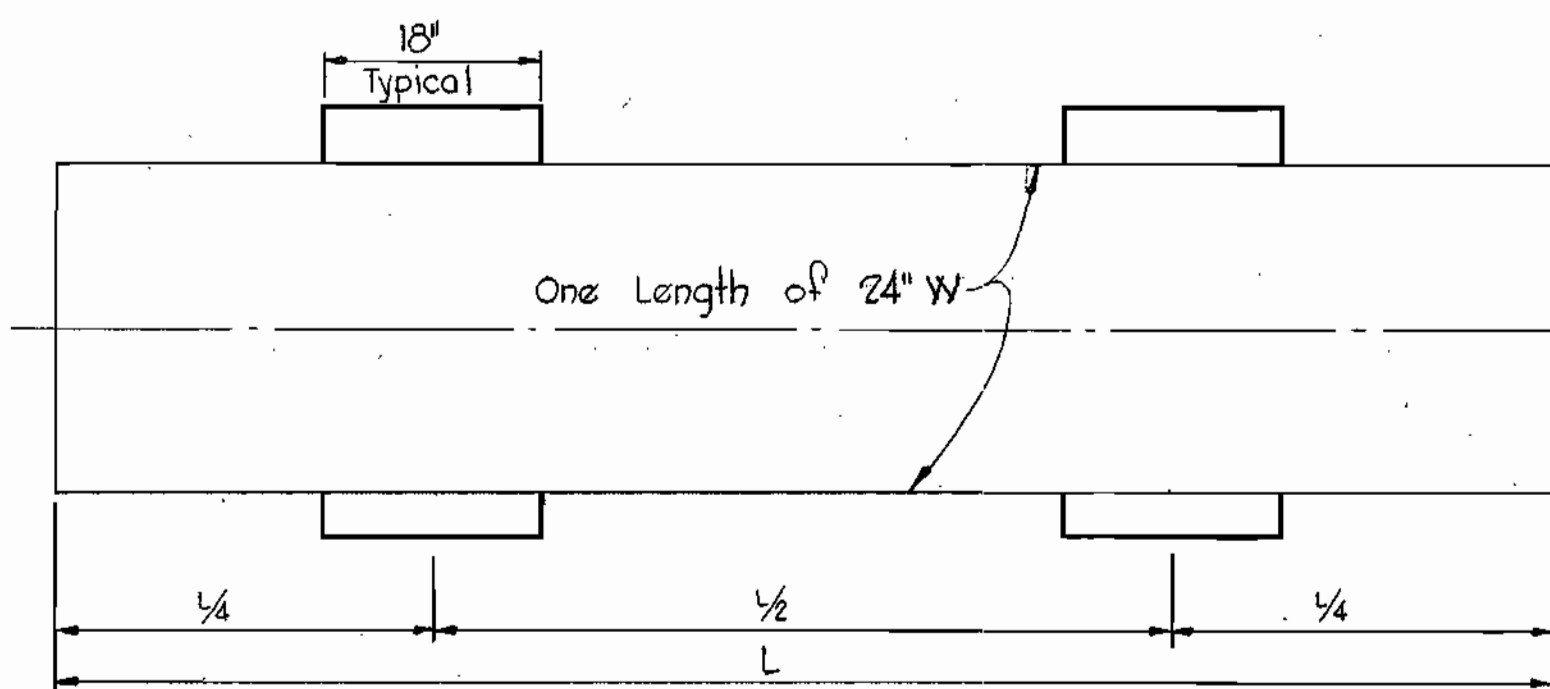
Rip Rap to consist of dense rocks of random shapes and sizes, resistant to the action of air and water and suitable for bank protection. All rocks shall weigh a minimum of 150 pounds.

Maintain 1' minimum clearance between Rip Rap and top of pipe

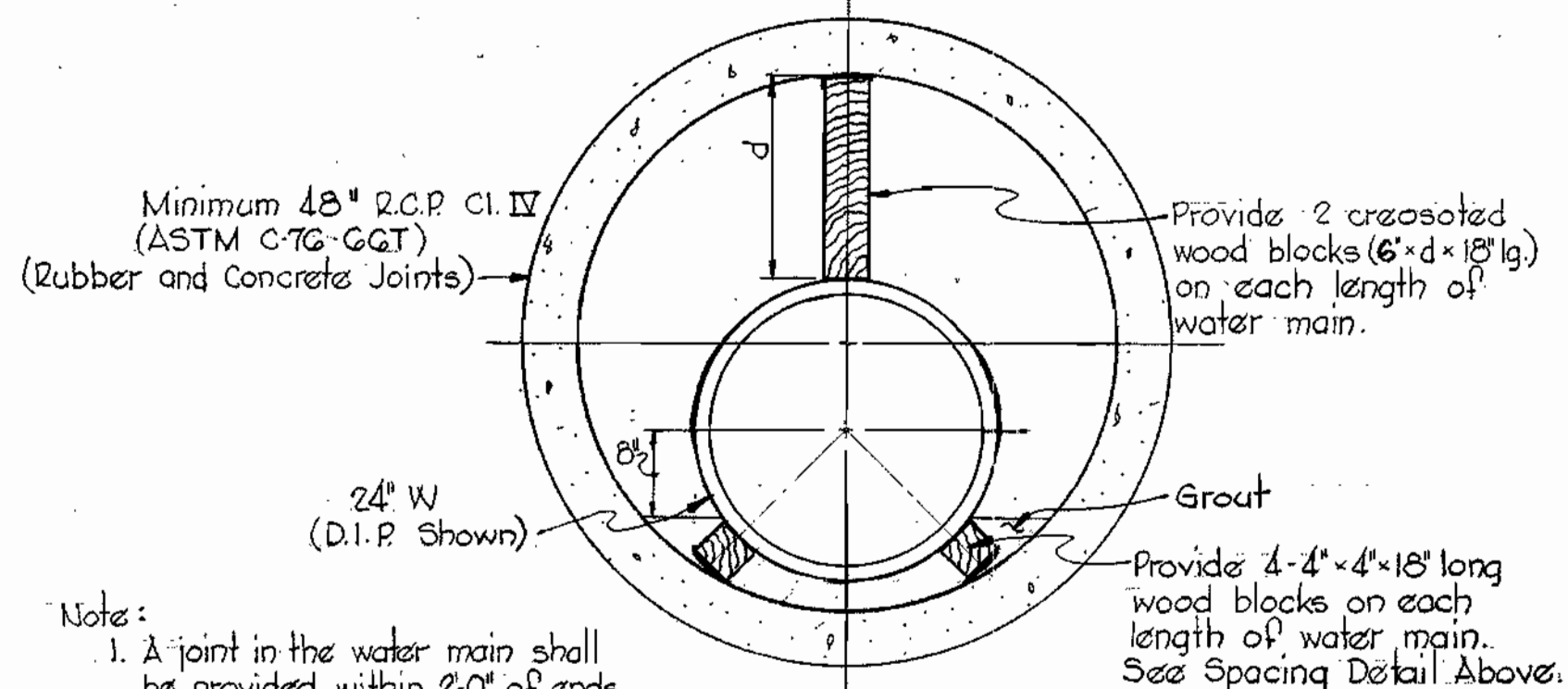


**RIP RAP DETAIL**  
Scale: 3/8" = 1'-0"

NOTE:  
1. Payment for furnishing & placing Rip Rap will be included in the unit price bid for excavation and backfill.

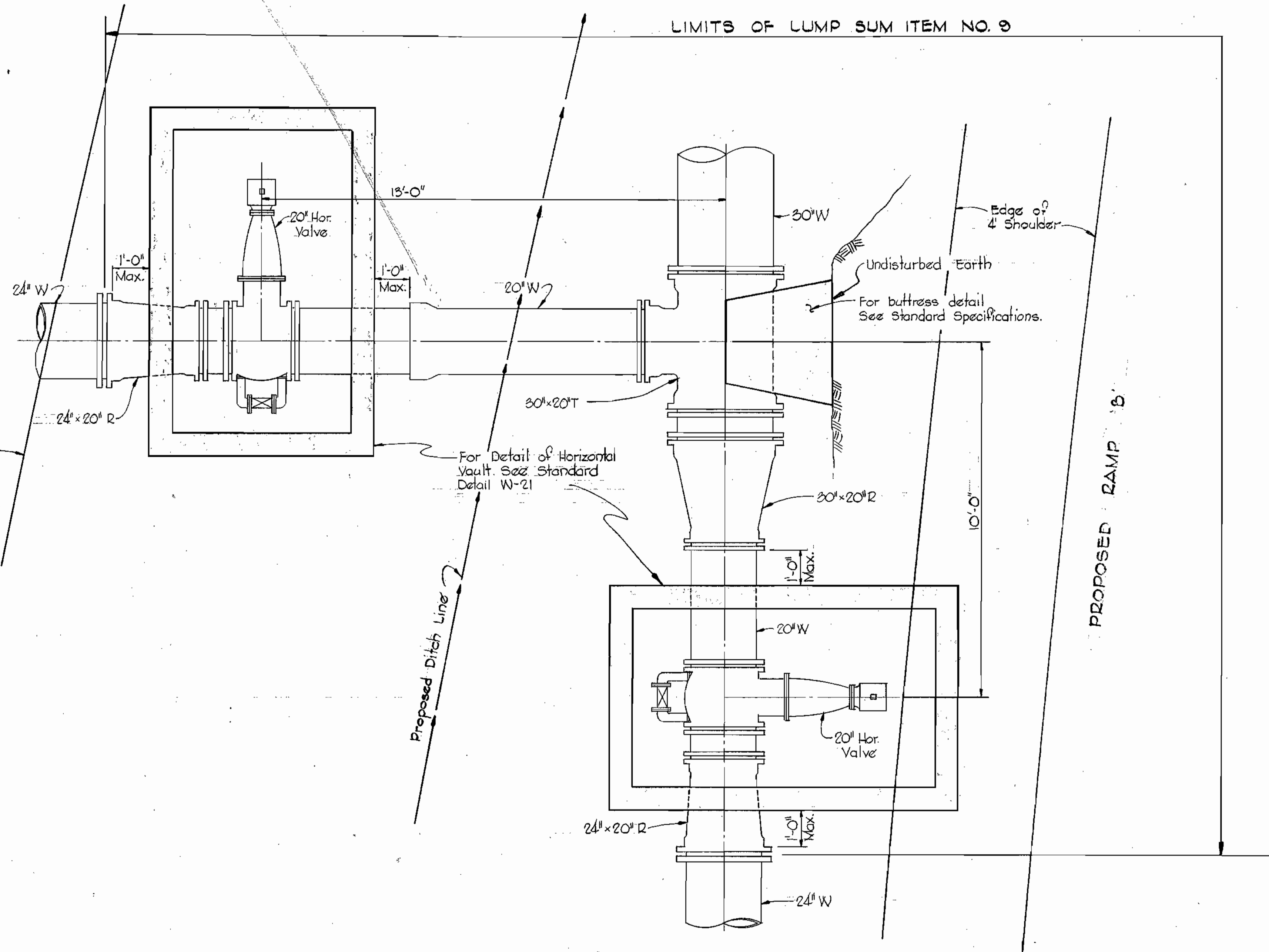


**WOOD BLOCK SPACING**  
Scale: 3/4" = 1'-0"

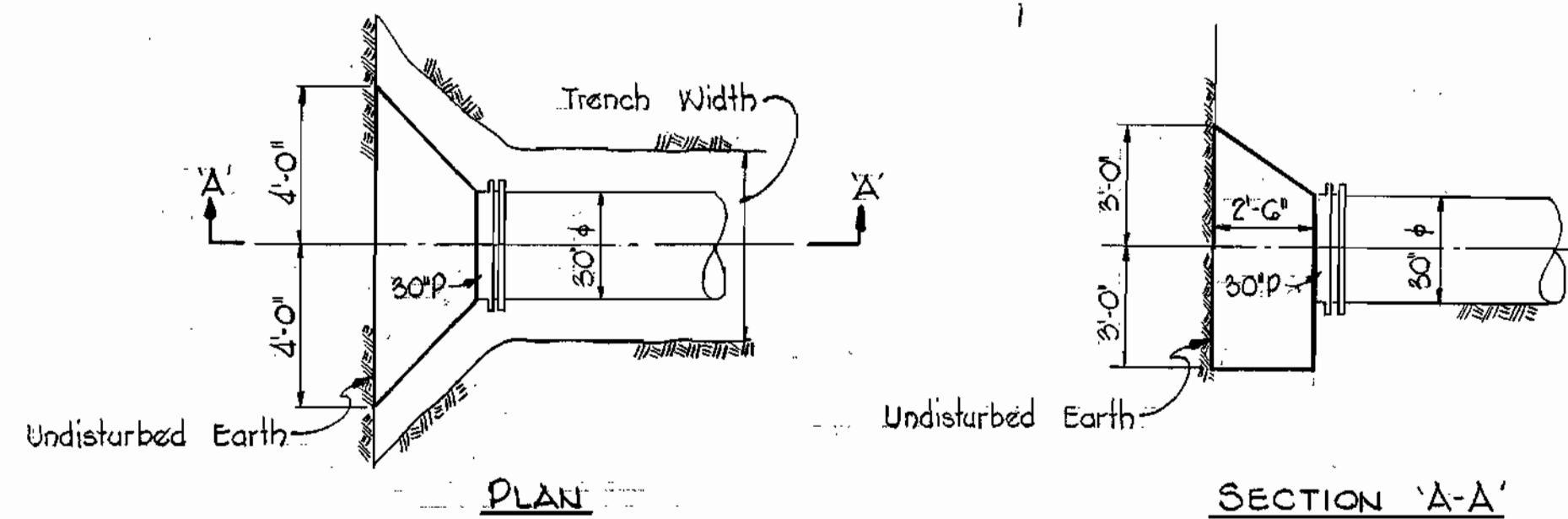


Note:  
1. A joint in the water main shall be provided within 2'-0" of ends of the 48 inch casing.  
2. Build 8" brick bulkhead each end of 48 inch casing. Provide drain pipes through bulkhead on each side of water main at low end of casing (2'-2").

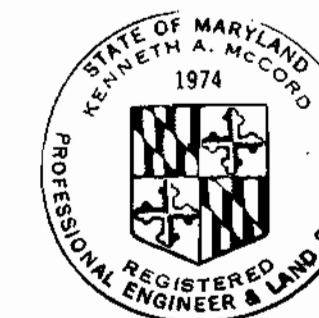
**48" CASING DETAIL**  
Scale: 3/4" = 1'-0"



**PIPING LAYOUT AT SNOWDEN RIVER PARKWAY**  
Scale: 1/2" = 1'-0"



**30" BUTRESS DETAIL**  
Scale: 1/2" = 1'-0"



*Kenneth A. McCord*

Project No. WP 8074  
Contract No. 550-W

<b>WHITMAN, REQUARDT &amp; ASSOCIATES</b> ENGINEERS 1304 ST. PAUL ST. BALTIMORE, MARYLAND	<b>DEPARTMENT OF PUBLIC WORKS</b> HOWARD COUNTY, MARYLAND 12-13-73 W. O. Gilbert CHIEF-BUREAU OF ENGINEERING	<b>CONTRACT NO. 550-W</b>	<b>DETAILS OF WATER MAIN</b>	<b>ELECTION DISTRICT GUILFORD NO. 6</b>	<b>DRAWING NO. 4 OF 4</b> <b>SCALE AS SHOWN</b>
--	--	---------------------------	------------------------------	---	--

W. O. GG01-2

NOV. 13, 1974  
AS BUILT

WS 550-w/4