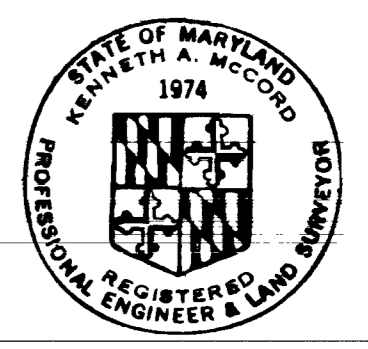


**CONTRACT NO. 543-S**  
**SEWER MAIN EXTENSIONS**  
**HOWARD COUNTY, MARYLAND**  
**DEPARTMENT OF PUBLIC WORKS**

QUANTITIES		As-Built
8" Sewer	6,550 L.F.	6,542 L.F.



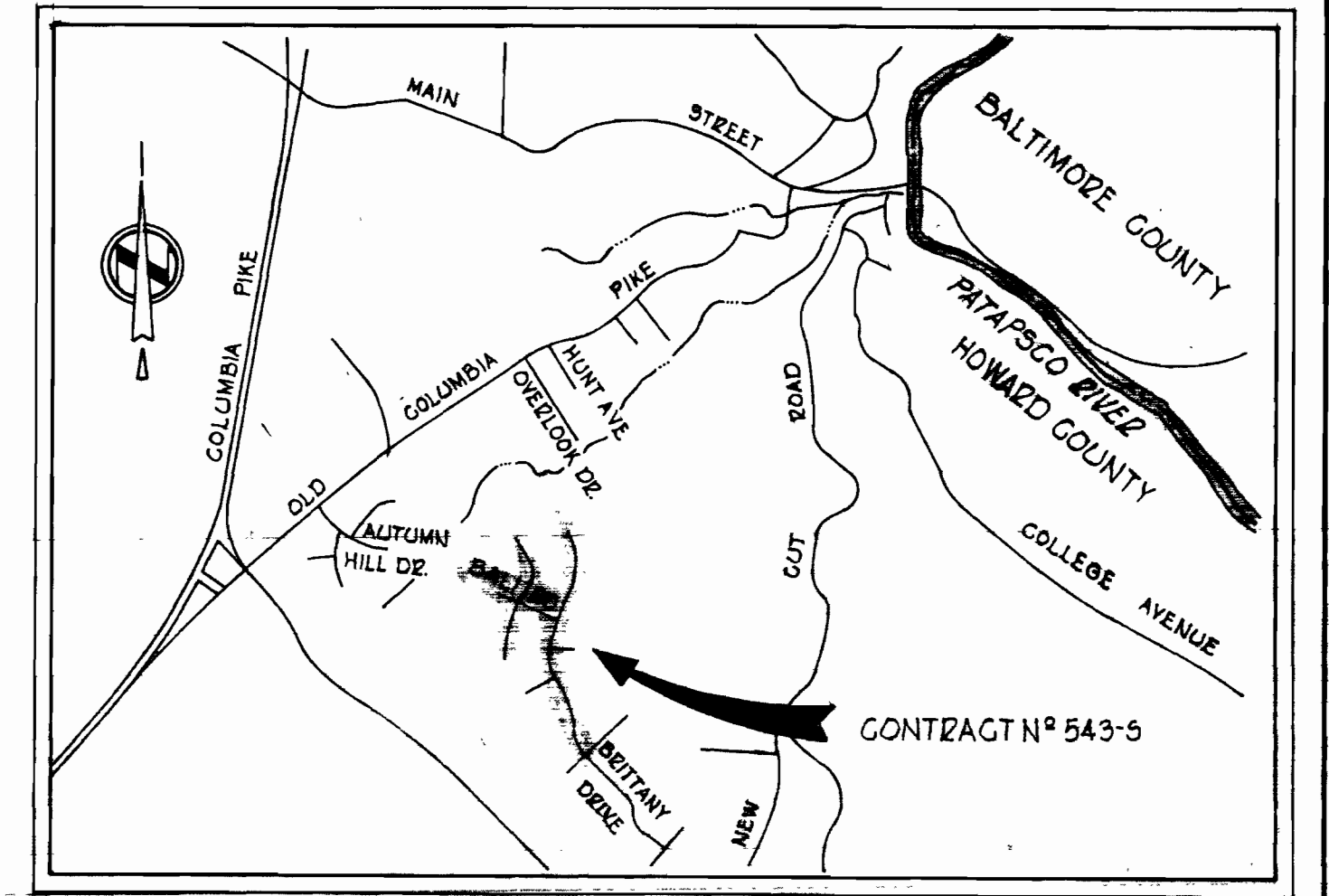
*Kenneth A. Accord*

(AS-BUILT)  
 All Sewer Pipe (A.C.P.)  
 Johns-Manville  
 Diary F.B.# 5903, 5911  
 Stakeout F.B.# 5911

Stonecrest  
 Project No. SP 6038  
 Section 2,3,4,5,6,17  
 Contract No. 543-S

WHITMAN, REQUARDT & ASSOCIATES ENGINEERS 1304 ST. PAUL ST. BALTIMORE, MARYLAND	DEPARTMENT OF PUBLIC WORKS HOWARD COUNTY, MARYLAND DATE: 11-30-73 <i>W.D. Roberts</i> CHIEF BUREAU OF ENGINEERING	CONTRACT NO. <u>543-S</u>	LOCATION MAP	ELECTION DISTRICT ELLICOTT CITY NO.2	DRAWING NO. <u>1</u> OF <u>6</u> SCALE 1" = 600' <small>           218-2, 218-4            217-2, 217-4            216-2, 216-4         </small>
---	---	---------------------------	--------------	---	--

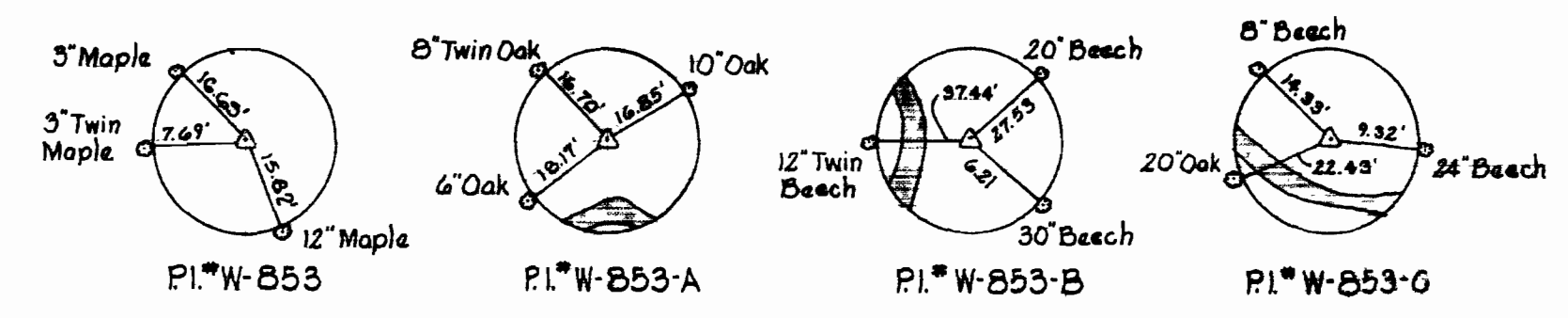
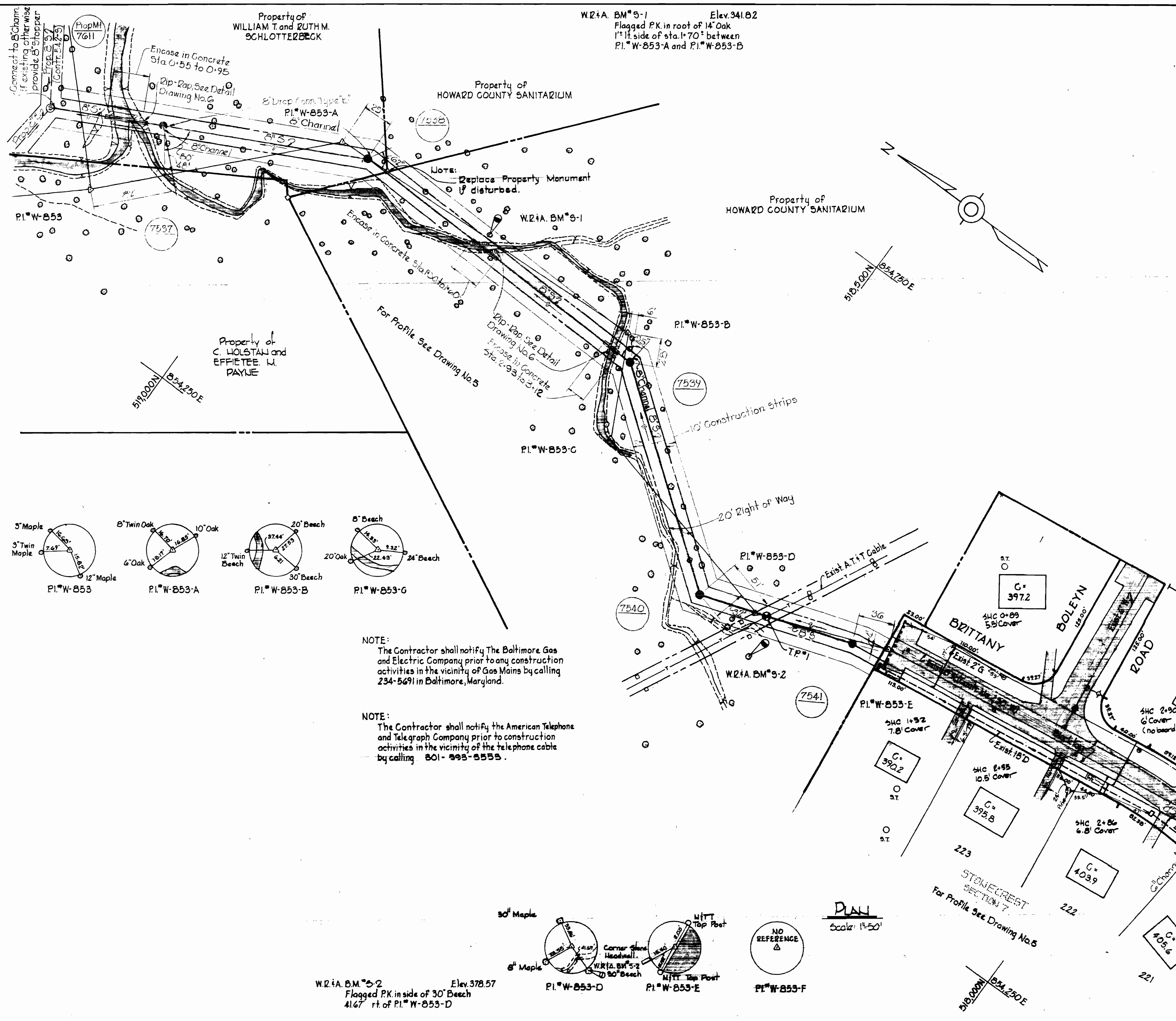
WS 543-S/1



VICINITY MAP  
Scale: 1" = 2,000'

**GENERAL NOTES**

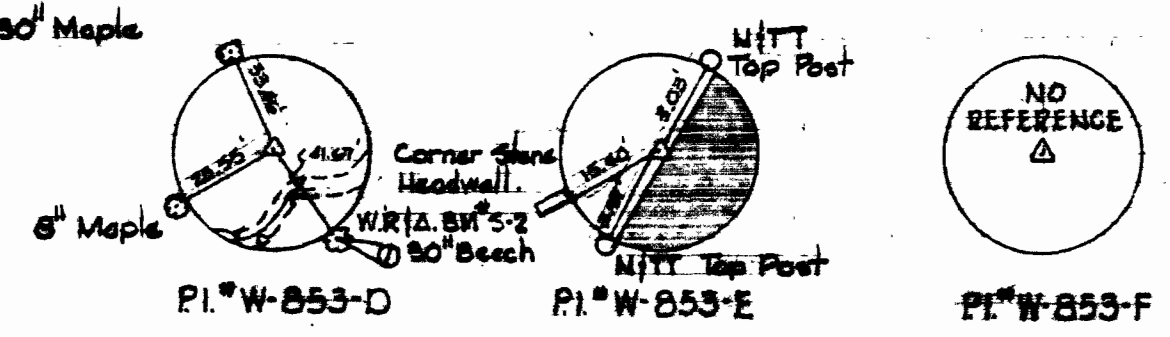
1. Approximate location of existing mains are shown. The Contractor shall take all necessary precautions to protect existing mains and services and maintain uninterrupted supply. Any damage incurred shall be repaired immediately.
2. All pipe elevations shown are invert elevations.
3. The Contractor shall locate existing utilities a minimum of two weeks in advance of construction operations in vicinity of utilities.
4. For all standard details see standards bound in Specifications.
5. Clear all utilities by a minimum of 6'; clear all poles by 2'-0" minimum or tunnel as required.
6. The Contractor shall provide a joint in all sewer mains within 2'-0" of exterior manhole walls.
7. All manholes shall be 4'-0" inside diameter.
8. All horizontal and vertical controls are based on Maryland State Datum.
9. All S.H.C.'s at 20% shall have 8" x 6" Y enclosed in concrete.
10. Trees are to be protected from damage to maximum extent. Trees located within the construction strip are not to be removed or damaged by the Contractor.



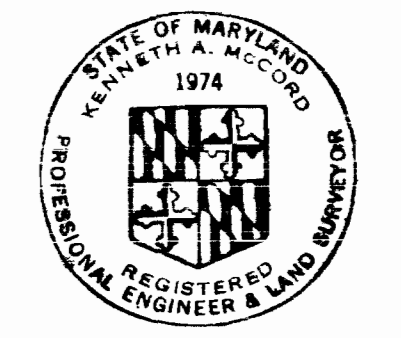
NOTE:  
The Contractor shall notify The Baltimore Gas and Electric Company prior to any construction activities in the vicinity of Gas Mains by calling 234-5691 in Baltimore, Maryland.

NOTE:  
The Contractor shall notify the American Telephone and Telegraph Company prior to construction activities in the vicinity of the telephone cable by calling 801-893-5555.

W.R.I.A. B.M. #2-2 Elev. 378.57  
Flagged P.K. in side of 30" Beech  
41.67' rt. of P.I. #W-853-D



NO REFERENCE  
△



*Kenneth M. Mink*

Stonecrest  
Project No. SP 6038  
Sections 2, 3, 4, 5, 6, 7  
Contract No. 543-S

WHITMAN, REQUARDT & ASSOCIATES ENGINEERS 1304 ST. PAUL ST. BALTIMORE, MARYLAND	DEPARTMENT OF PUBLIC WORKS HOWARD COUNTY, MARYLAND 11-30-73 DATE <i>W.O. Palbat</i> CHIEF BUREAU OF ENGINEERING	CONTRACT NO. 543-S	PLAN OF SEWER MAINS	ELECTION DISTRICT ELLICOTT CITY NO. 2	DRAWING NO. 2 OF 6 SCALE AS SHOWN 518-5 518-6 517-6 517-4
---	--	--------------------	------------------------	--	--

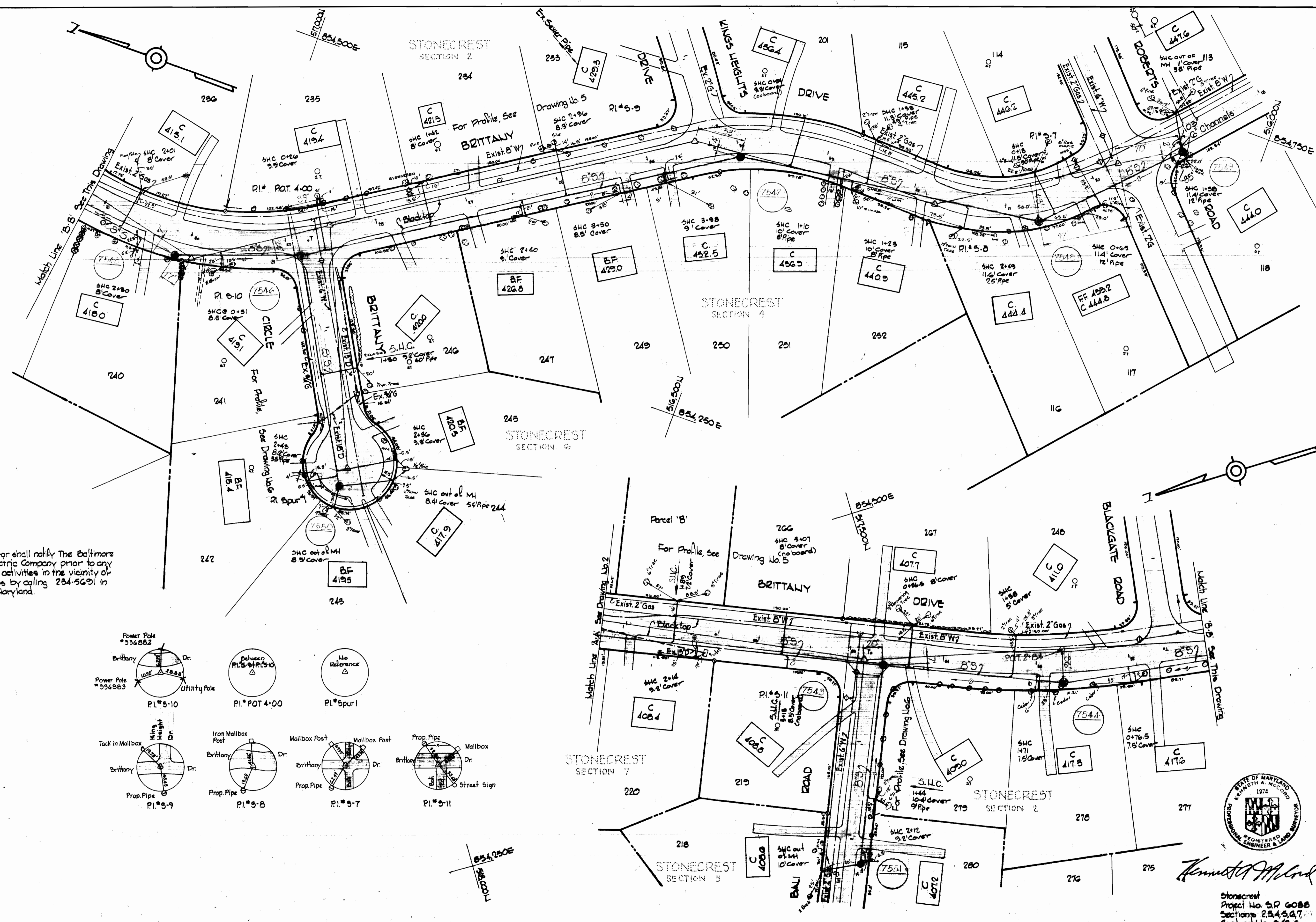
October 11, 1977 FB# 3016, 5000, 5151, 5201, 5355, 5555

WS 543-S/2

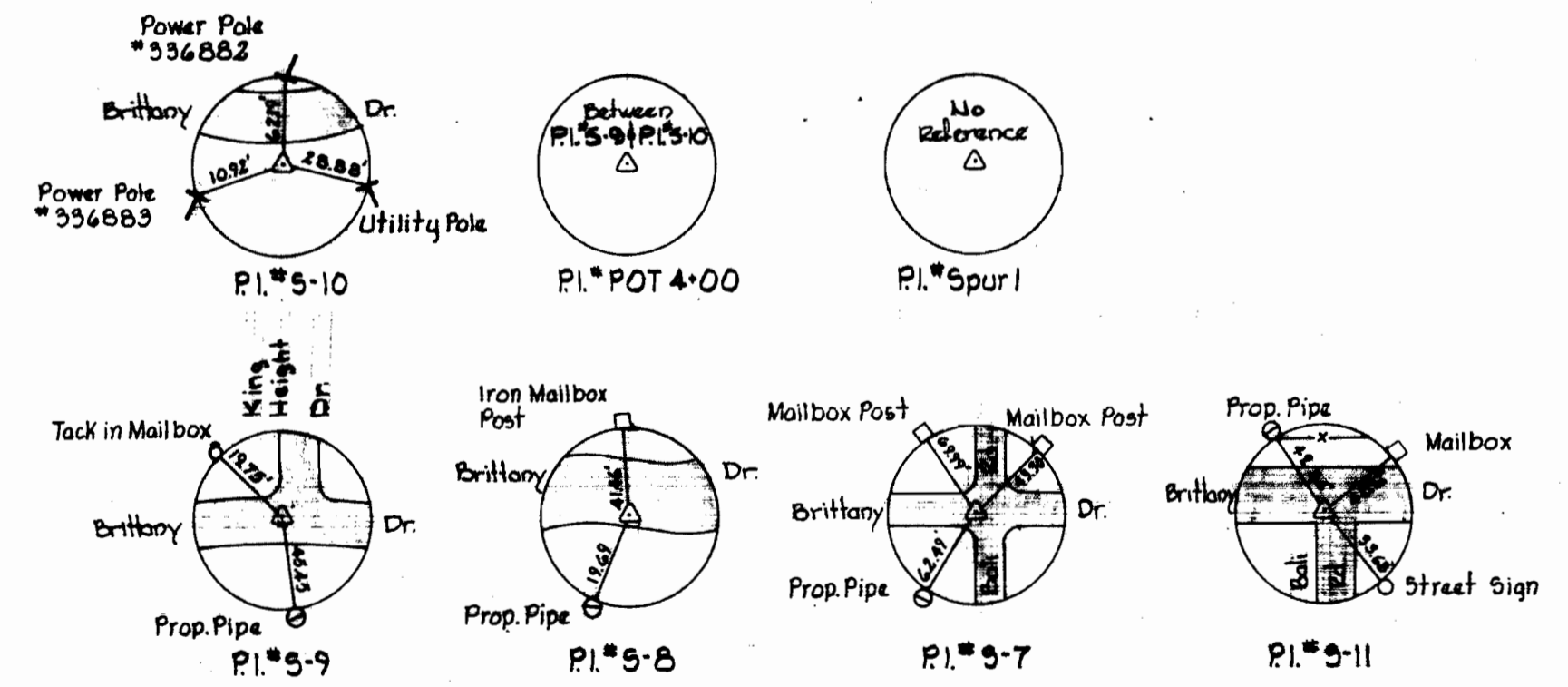
BRUNING 4-510 18392

W.O. 6601-2

25 BULL



NOTE:  
 The Contractor shall notify The Baltimore Gas and Electric Company prior to any construction activities in the vicinity of the Gas Mains by calling 234-5691 in Baltimore, Maryland.



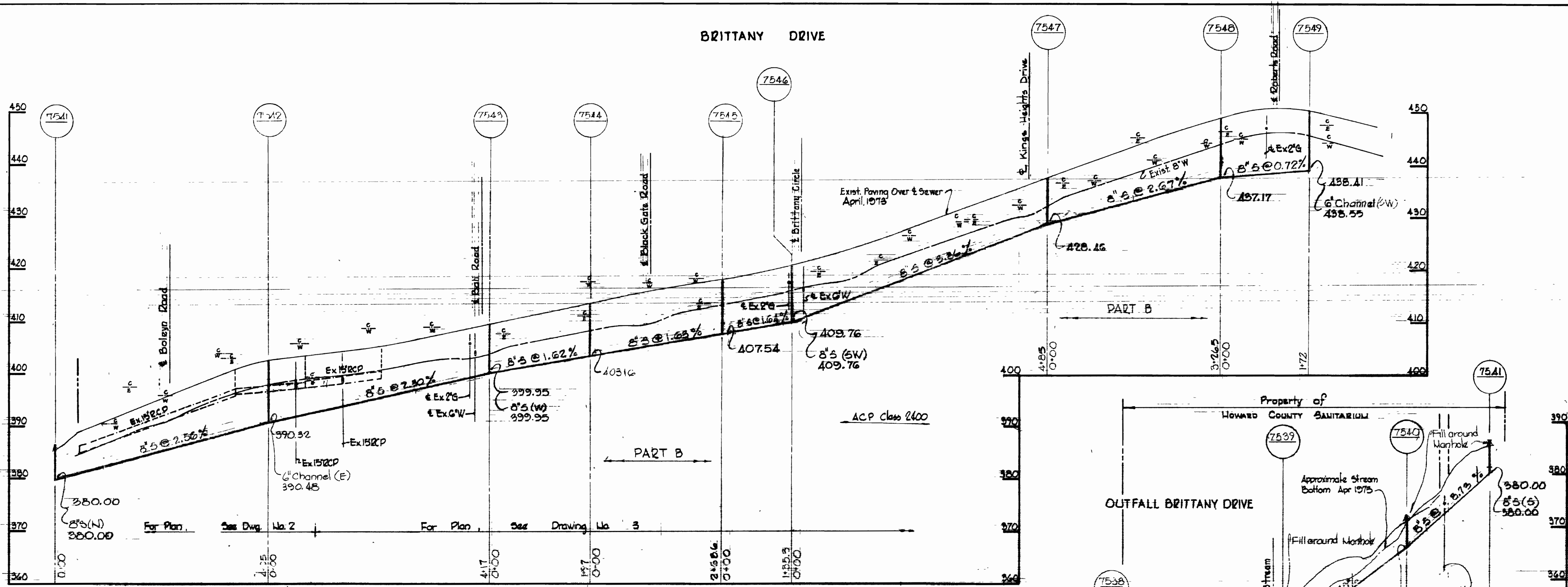
*Kenneth A. Accord*

Stonecrest  
 Project No. SP 6088  
 Sections 2, 4, 5, 6, 7  
 Contract No. 543-S

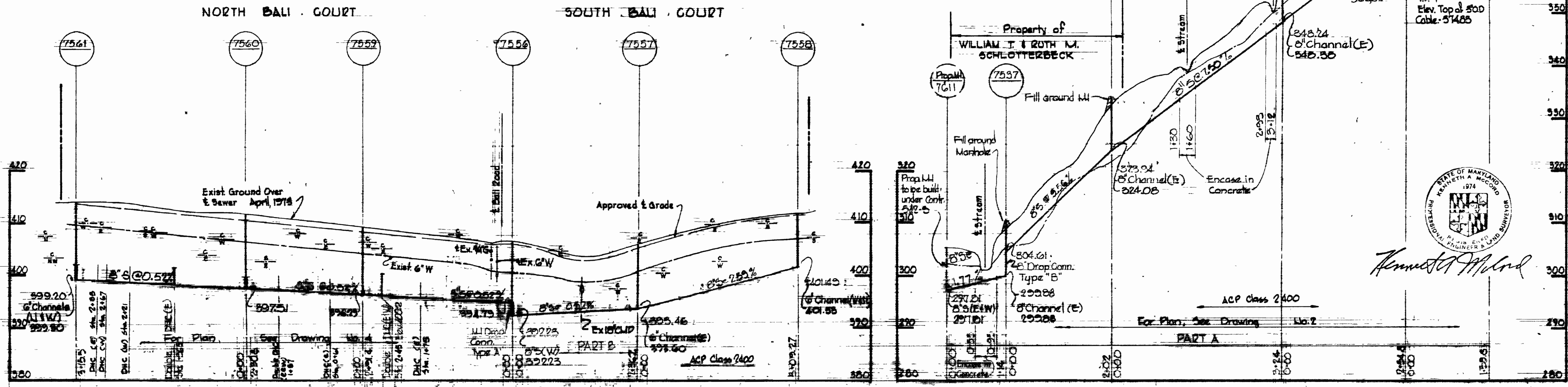
WHITMAN, REQUARDT & ASSOCIATES ENGINEERS 1304 ST. PAUL ST. BALTIMORE, MARYLAND	DEPARTMENT OF PUBLIC WORKS HOWARD COUNTY, MARYLAND 11-30-73 <i>W. O. Falbert</i> CHIEF-BUREAU OF ENGINEERING	CONTRACT NO. 543-S	PLAN OF SEWER MAINS	ELECTION DISTRICT ELLICOTT CITY NO. 2	DRAWING NO. 3 OF 6 SCALE 1" = 50' October 11, 1977 FB# 3015, 3384, 10399 AS BUILT
---	--	--------------------	------------------------	--	--



BRITTANY DRIVE



NORTH BALI COURT SOUTH BALI COURT



*Kenneth A. McCord*

WHITMAN, REQUARDT & ASSOCIATES  
ENGINEERS  
1304 ST. PAUL ST.  
BALTIMORE, MARYLAND

DEPARTMENT OF PUBLIC WORKS  
HOWARD COUNTY, MARYLAND  
11-30-73  
W. O. Edmond  
CHIEF BUREAU OF ENGINEERING

CONTRACT NO. 543-S

PROFILE OF  
SEWER MAINS

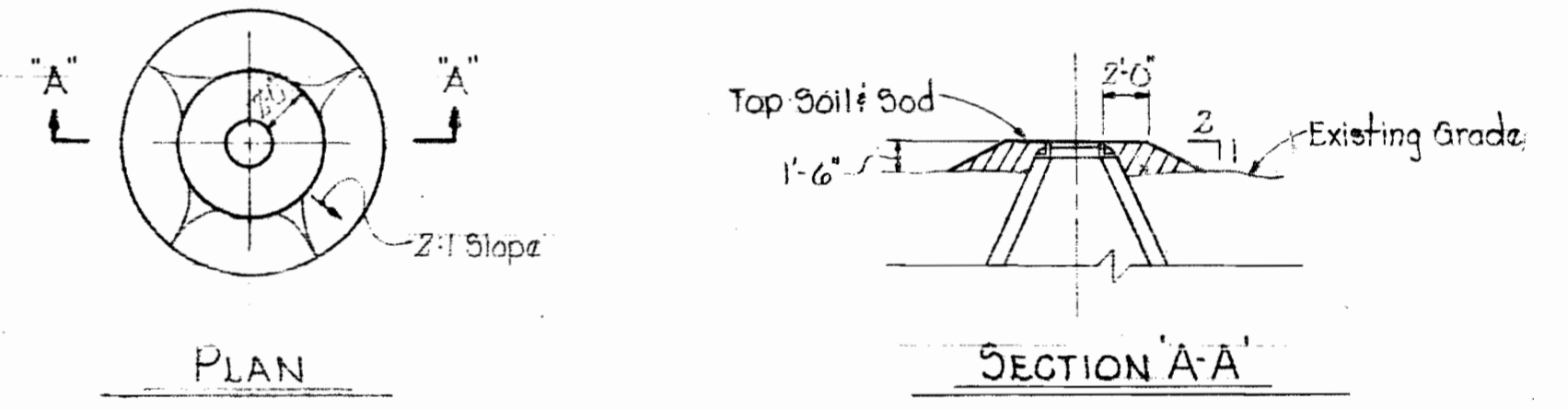
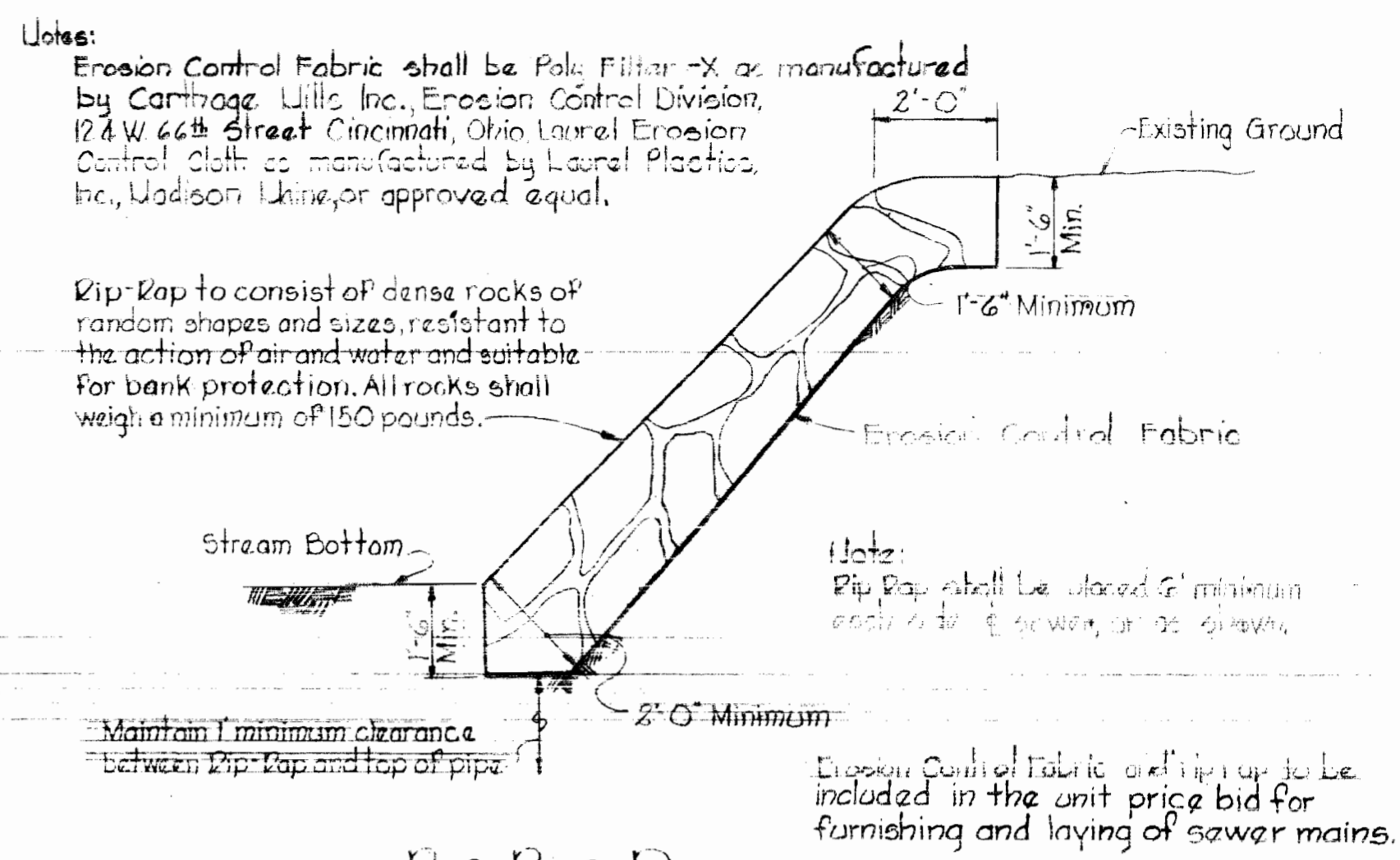
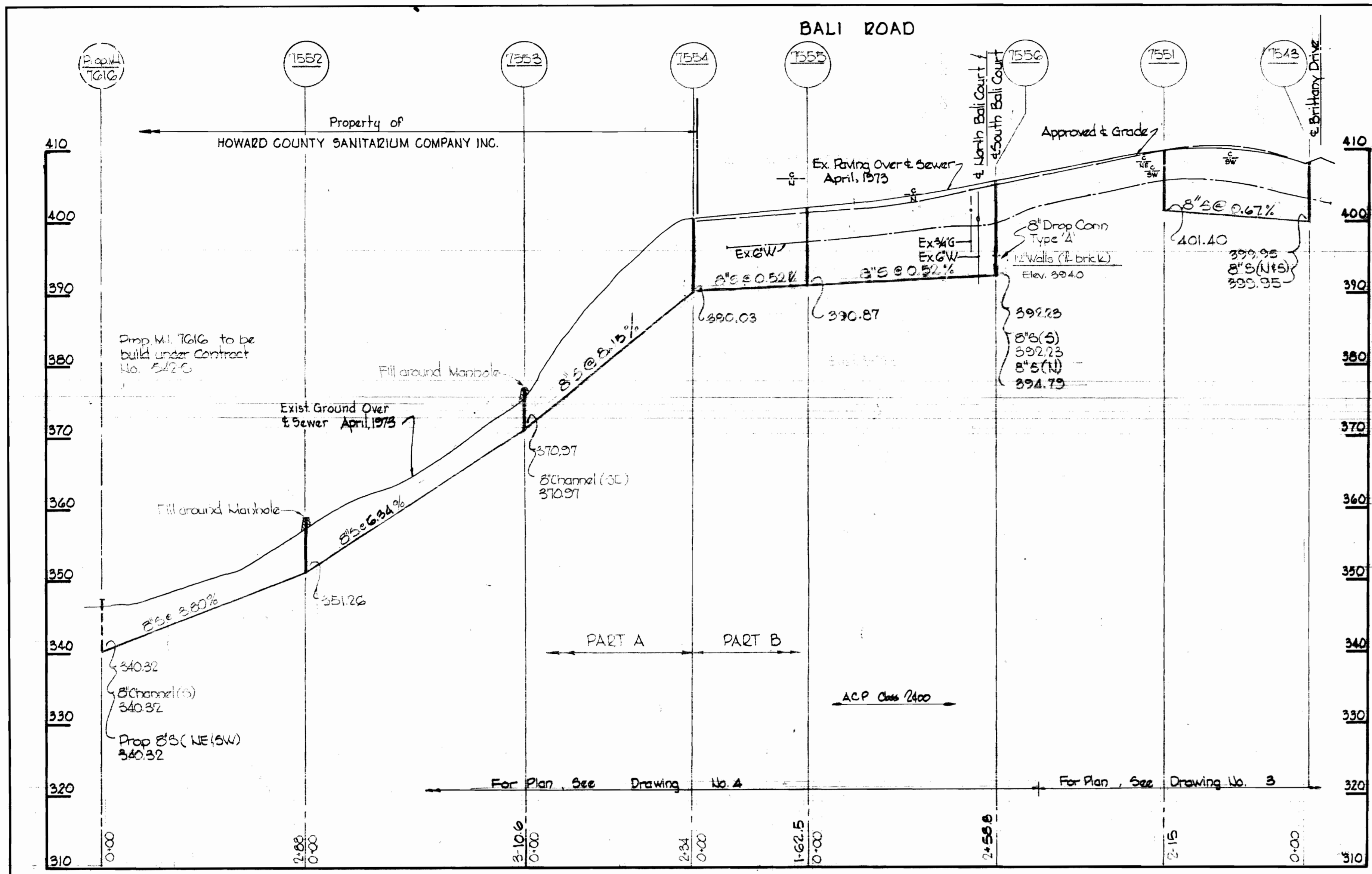
ELECTION DISTRICT  
ELLIOTT CITY NO. 2

DRAWING NO. 5 OF 6 SCALE 1"=10'

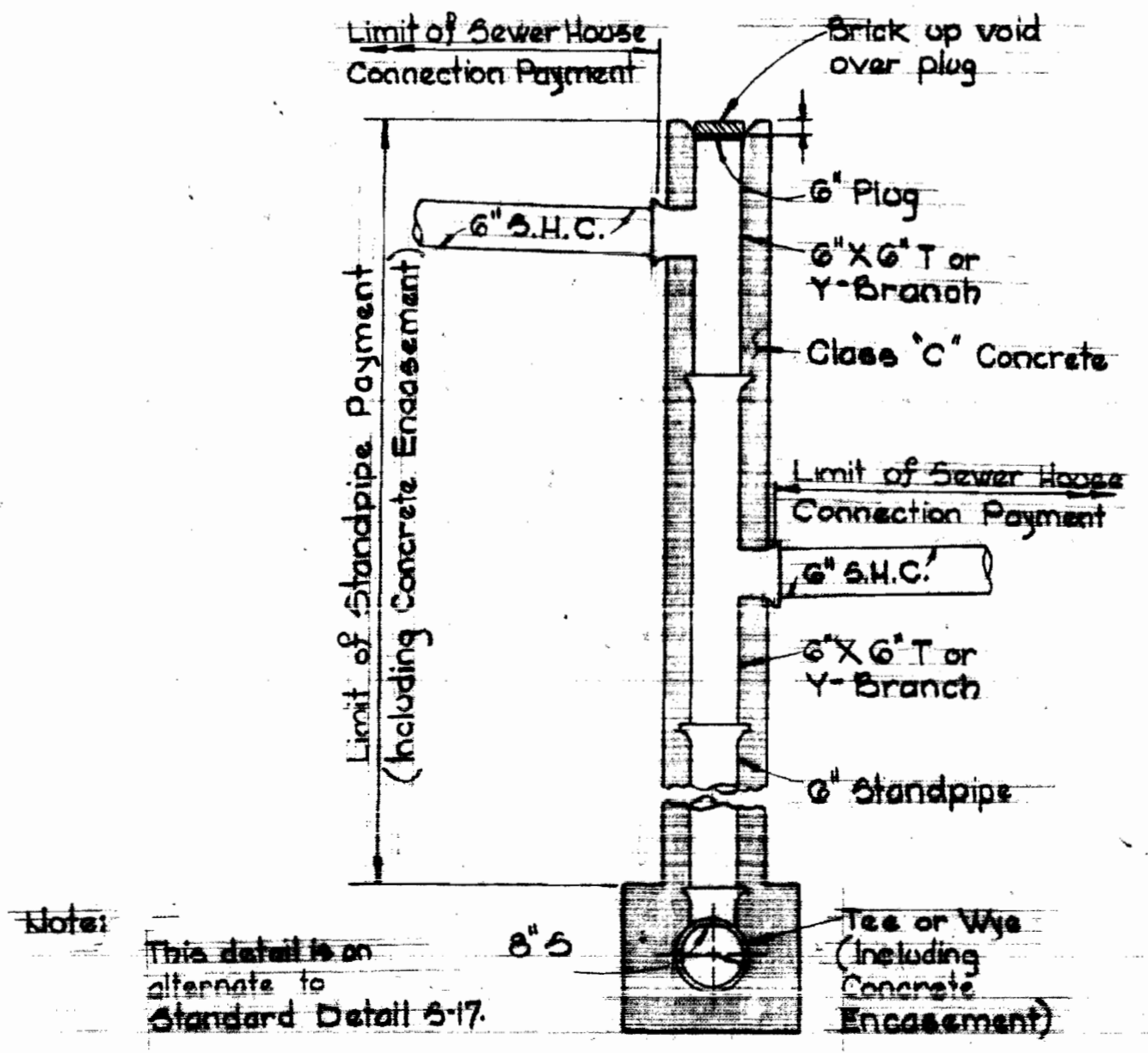
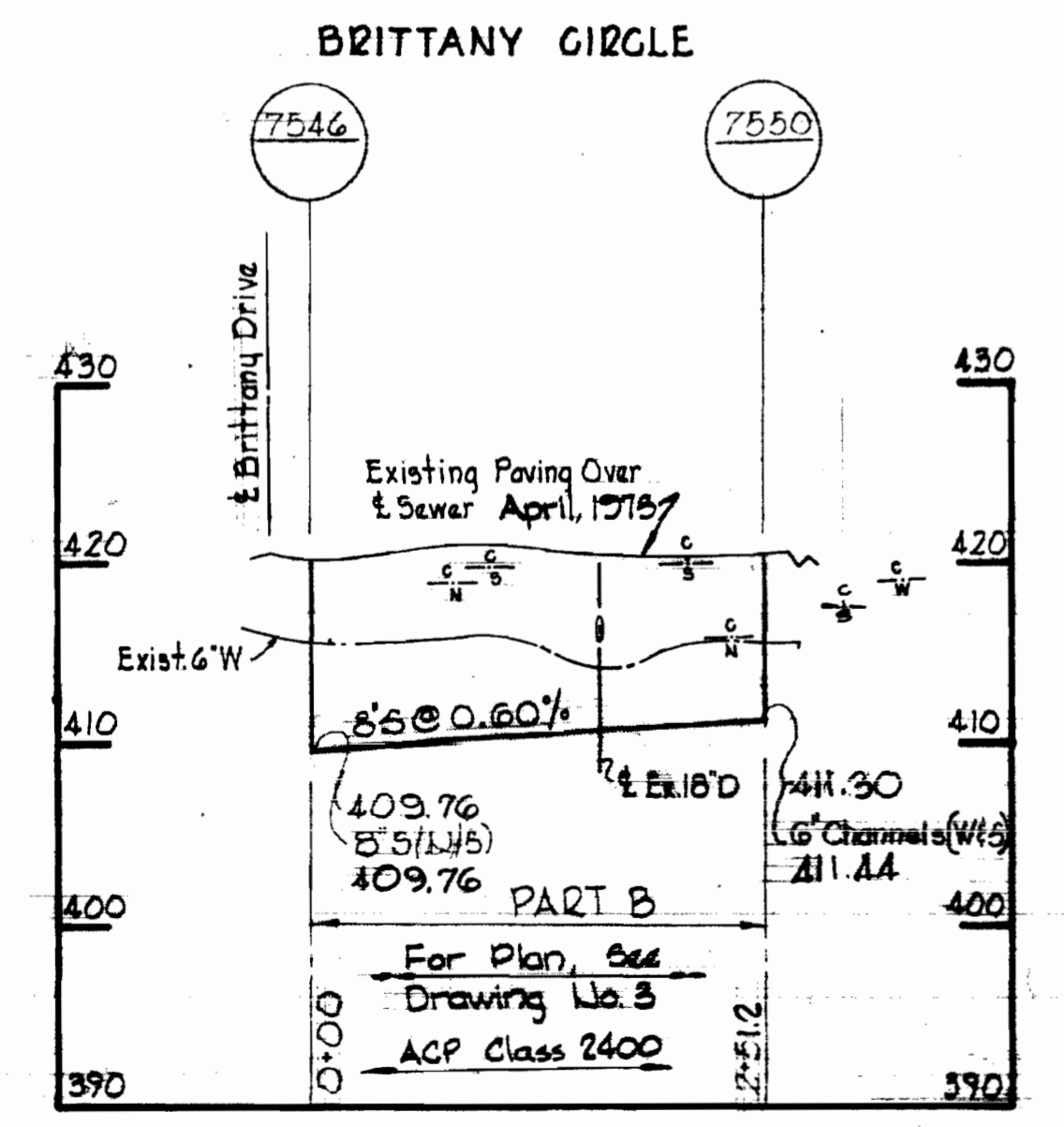
October 11, 1977

WS 543-S/5

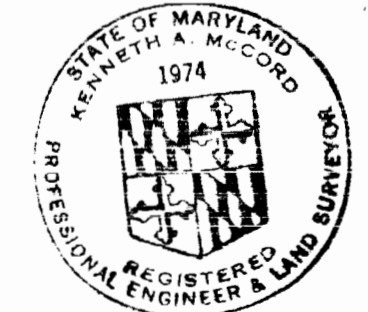
W. O. 6601:2



**FILL AT MANHOLES**  
Nos 7537, 7538, 7539, 7540, 7553 AND 7562  
Scale: 1/8" = 1'-0"



**DETAIL OF DOUBLE DROP HOUSE CONNECTION**  
Scale: 1/2" = 1'-0"



*Kenneth A. McCord*

Dimensioned  
Project No. 52 6028  
Sections 2, 3, 4, 5, 6, 7  
Contract No. 543-5

WHITMAN, REARDT & ASSOCIATES ENGINEERS 1304 ST. PAUL ST. BALTIMORE, MARYLAND	DEPARTMENT OF PUBLIC WORKS HOWARD COUNTY, MARYLAND 11-30-73 DATE	CONTRACT NO. 543-S	PROFILE AND DETAIL OF SEWER MAINS	ELECTION DISTRICT ELLCOTT CITY NO. 2	DRAWING NO. 6 OF 6 SCALE AS SHOWN
---	---	--------------------	--------------------------------------	---	---

W. O. 6601-2

October 11, 1977

AS BUILT

WS 543-S/6

BRUNING 44-510 18392