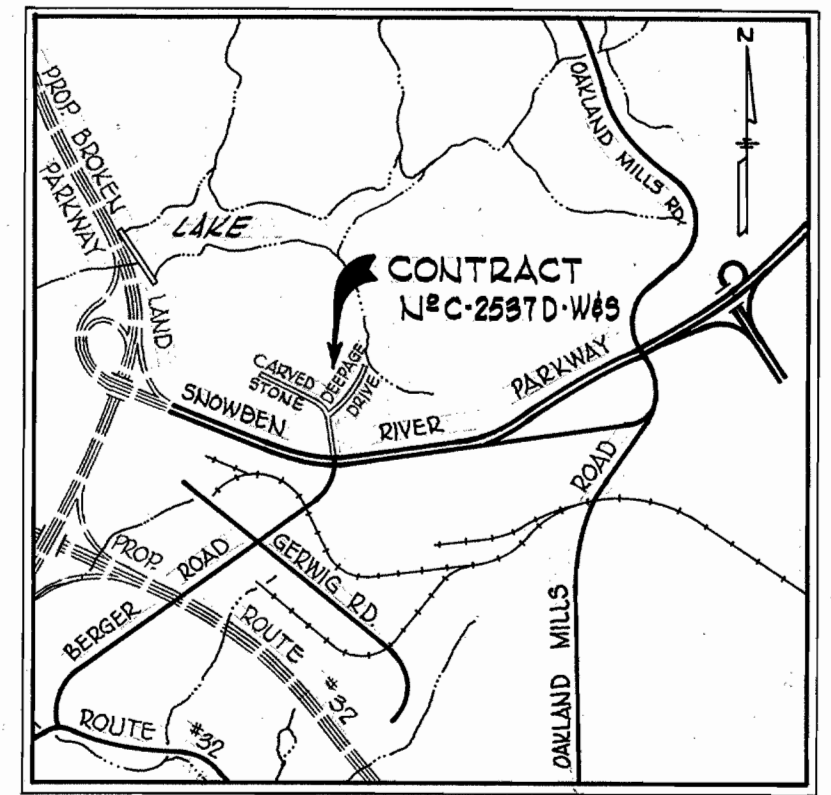


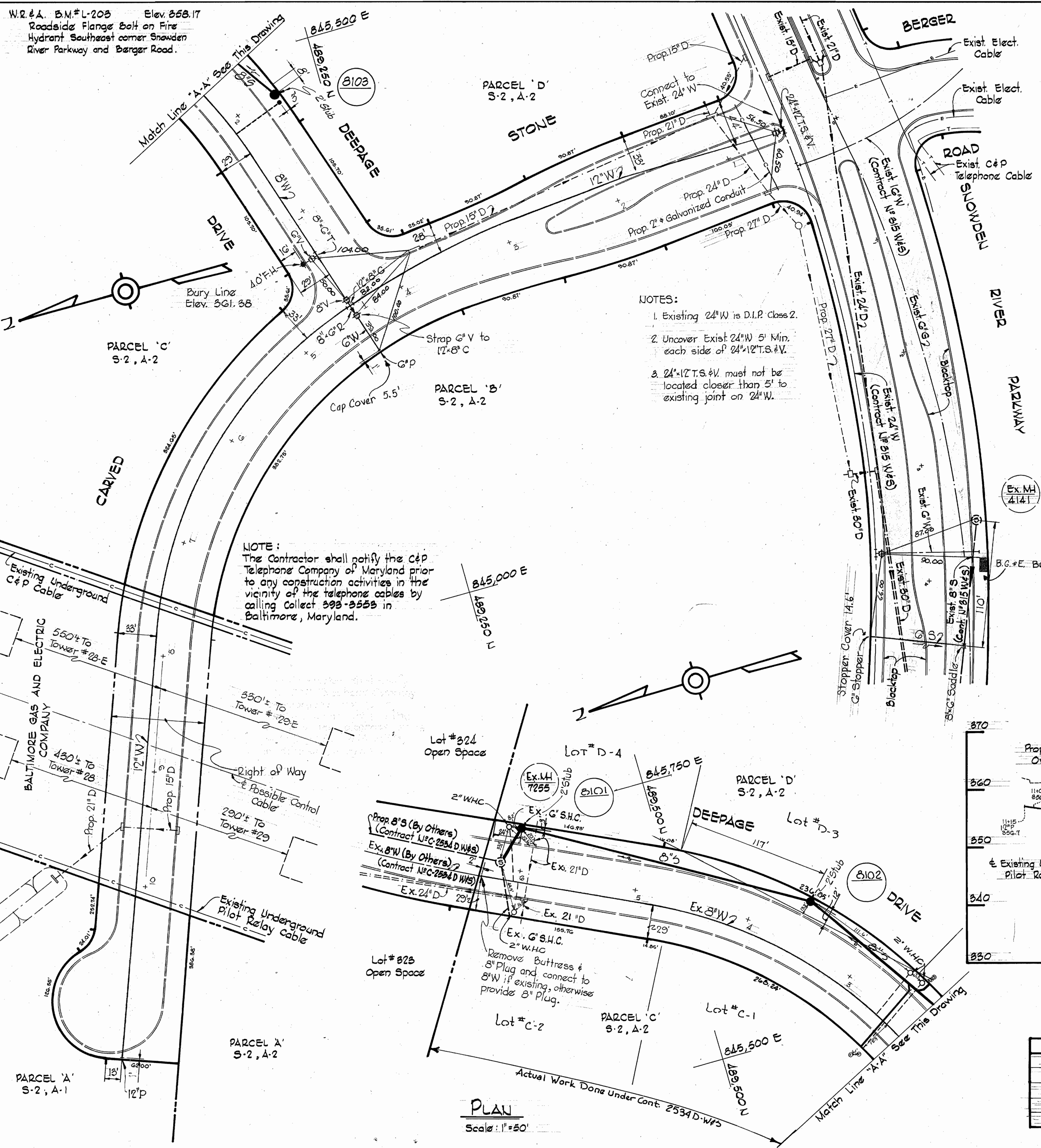
W.R. & A. B.M.#L-205 Elev. 558.17  
 Roadside Flange Bolt on Fire Hydrant Southeast corner Snowden River Parkway and Berger Road.

**GENERAL NOTES**

- All manholes shall be 2'-0" inside diameter.
- The contractor shall provide a joint in all sewer pipe within 2'-0" of exterior manhole walls.
- Approximate location of existing mains are shown. The Contractor shall take all necessary precautions to protect existing mains and services and maintain uninterrupted supply. Any damage incurred shall be repaired immediately.
- All pipe elevations shown are invert elevations.
- The Contractor shall locate existing utilities a minimum of two weeks in advance of construction operations in vicinity of utilities.
- For all standard details see standards bound in Specifications.
- All horizontal and vertical controls are based on Maryland State Datum.
- Clear all utilities by a minimum of 6', clear all poles by a minimum of 2'-0" or tunnel as required.
- All water mains to have a minimum of 3 1/2' cover.
- Block all fittings with concrete, see standards bound in Specifications.
- Cost of strapping fire hydrants and valves to trees to be included in unit price bid for furnishing and laying of water mains.
- All fire hydrants shall be strapped and buttressed in accordance with Standard Details.
- Bury Line elevations on fire hydrants shall be set to elevations shown on drawings.

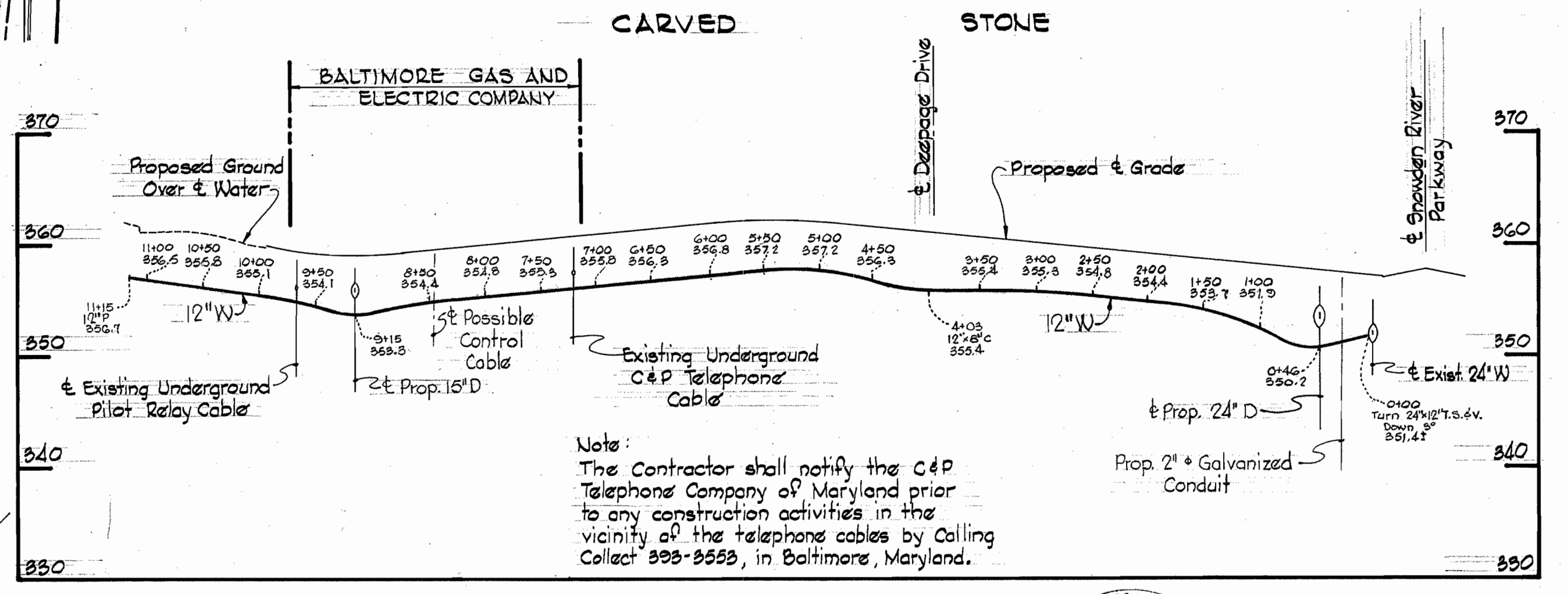
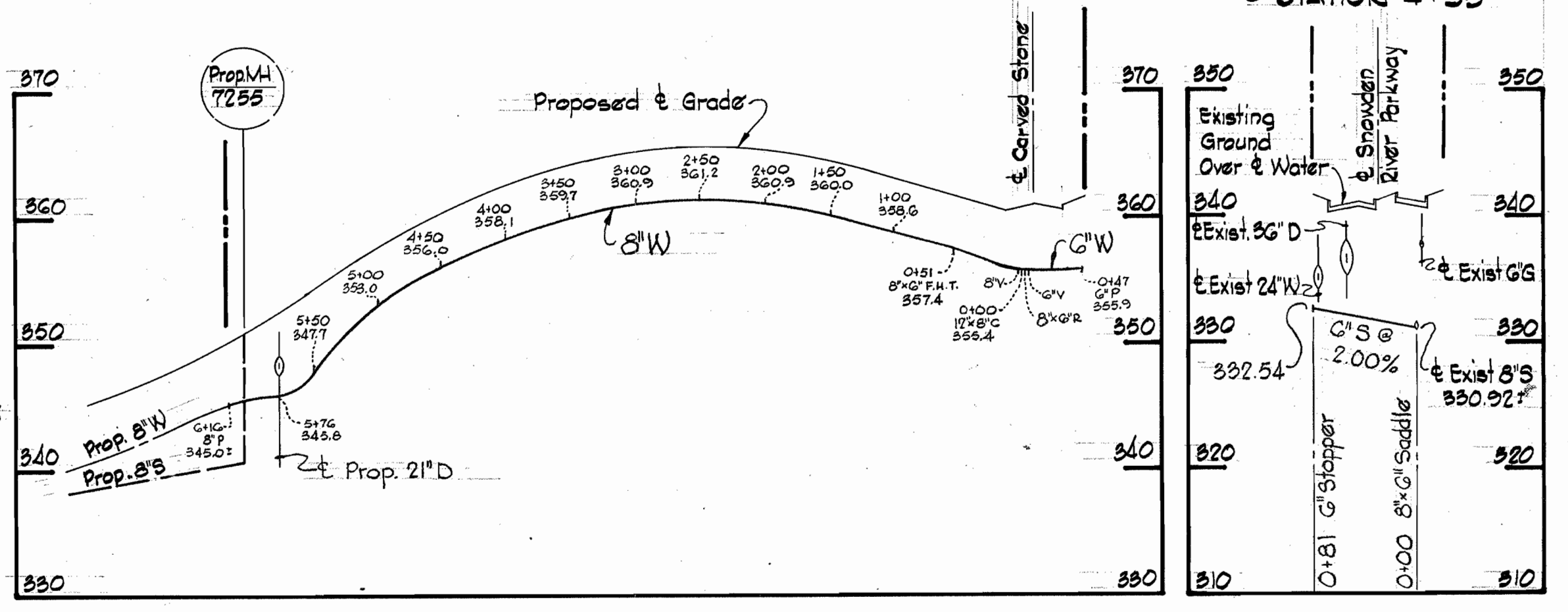


**VICINITY MAP**  
 Scale: 1" = 2,000'



- NOTES:**
- Existing 24" W is D.I.P. Class 2.
  - Uncover Exist 24" W 5' Min. each side of 24" W.T.S.#V.
  - 24" W.T.S.#V. must not be located closer than 5' to existing joint on 24" W.

**NOTE:**  
 The Contractor shall notify the C&P Telephone Company of Maryland prior to any construction activities in the vicinity of the telephone cables by calling Collect 393-3553 in Baltimore, Maryland.

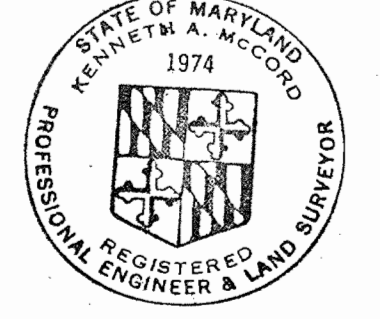


**NOTE:**  
 The Contractor shall notify the C&P Telephone Company of Maryland prior to any construction activities in the vicinity of the telephone cables by calling Collect 393-3553, in Baltimore, Maryland.

**PROFILES**

Scale: Horiz. 1" = 100'  
 Vert. 1" = 10'

QUANTITIES	
12" Water	1,120
8" Water	620
6" Water	50
6" Sewer	80
F.H.	1



*Kenneth A. McCord*

Village of Owen Brown  
 Parcels B, C, D  
 Section 2, Area 2  
 Contract N#C-2537D-W&S

<b>WHITMAN, REQUARDT &amp; ASSOCIATES</b> ENGINEERS 1304 ST. PAUL ST. BALTIMORE, MARYLAND	<b>DEPARTMENT OF PUBLIC WORKS</b> HOWARD COUNTY, MARYLAND 4-11-73 DATE	<b>CONTRACT NO. C-2537D-W&amp;S</b> <i>W.O. Pilbert</i> CHIEF BUREAU OF ENGINEERING	<b>PLAN AND PROFILES OF WATER AND SEWER MAINS</b>	<b>COLUMBIA</b> VILLAGE OF OWEN BROWN - SECTION 2, AREA 2 GUILFORD ELECTION DISTRICT NO. 6	<b>DRAWING NO. 1</b> <b>SCALE AS SHOWN</b>
--	---	---	---	--	---

W.O. 6758-2

AS BUILT OCT. 2, 1973

WS 537 W&S/1