

NOTE:
 Auger Borings were made by the American Testing and Engineering Company for the Howard Research and Development Corporation in December 1972. Information relative to refusal on auger are shown. Complete logs are available at the Howard County Department of Public Works.

CONTRACT C-2536 D W & S

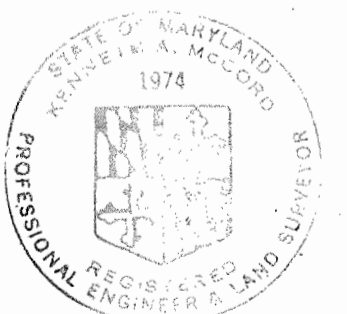
VILLAGE OF OWEN BROWN

HOWARD COUNTY, MARYLAND

DEPARTMENT OF PUBLIC WORKS

QUANTITIES	
ITEM	QUANTITY
8" Sewer	2520
6" Water	2160
ELL's	3

NOTE:
 Sewer House Connection to Lots 277, 278, 279, 285 and 286 will be constructed under contract No. C-2533-S.

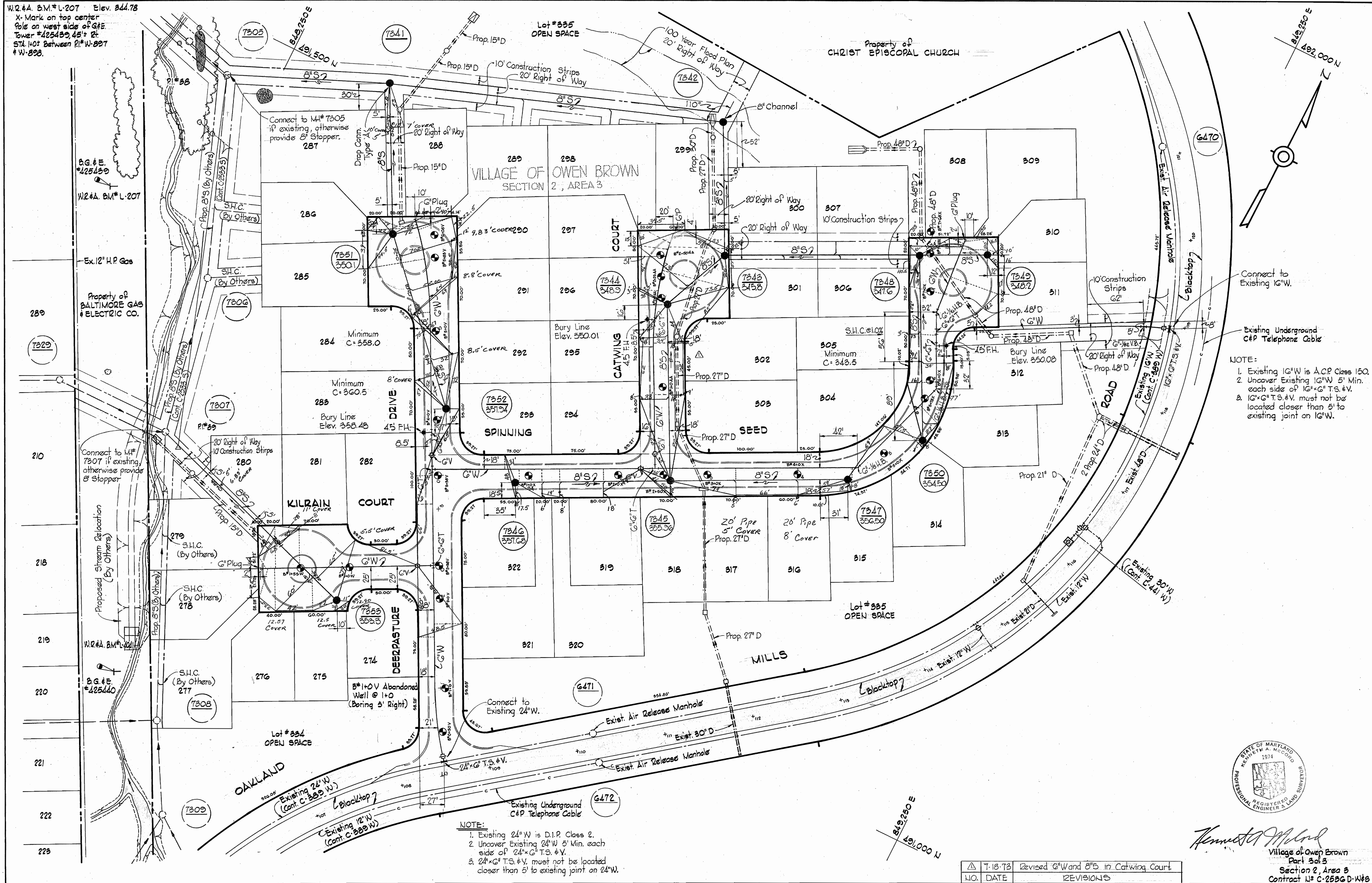


Kenneth A. McLeod

Village of Owen Brown, Part 3 of 3
 Section 2, Area 5
 Contract No. C-2536DW&S

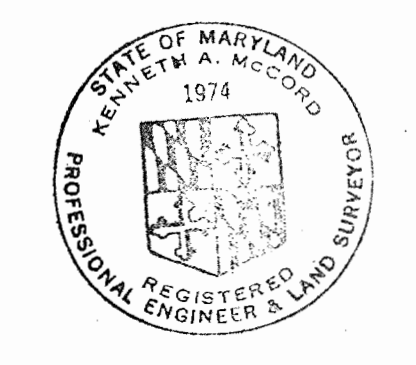
WHITMAN, REQUARDT & ASSOCIATES ENGINEERS 1304 ST. PAUL ST. BALTIMORE, MARYLAND	DEPARTMENT OF PUBLIC WORKS HOWARD COUNTY, MARYLAND DATE: 5-29-73 <i>W. O. Fullert</i> CHIEF - BUREAU OF WATER AND SEWER	CONTRACT NO. C-2536DW&S	LOCATION MAP OF WATER & SEWER MAIN EXTENSIONS	COLUMBIA VILLAGE OF OWEN BROWN ELECTION DISTRICT GUILFORD No. 6	DRAWING NO. 1 OF 3 SCALE 1"=800'
-----------------------------------------------------------------------------------------	-------------------------------------------------------------------------------------------------------------------------------------	-------------------------	--------------------------------------------------	-----------------------------------------------------------------------	-------------------------------------

W.R.#4 B.M.# L-207 Elev. 344.78
 X-Mark on top center
 Pole on west side of G.E.
 Tower #225439, 45' x 2"
 STA. NO. between R1# W-297
 & W-298



NOTE:
 1. Existing 12" W is A.C.P. Class 150.
 2. Uncover Existing 12" W 5' Min. each side of 12" x 6" T.S. & V.
 3. 12" x 6" T.S. & V. must not be located closer than 5' to existing joint on 12" W.

NOTE:
 1. Existing 24" W is D.I.P. Class 2.
 2. Uncover Existing 24" W 5' Min. each side of 24" x 6" T.S. & V.
 3. 24" x 6" T.S. & V. must not be located closer than 5' to existing joint on 24" W.



Kenneth A. McLeod
 Village of Owen Brown
 Part 3 of 3
 Section 2, Area 3
 Contract U# C-2536 D-W#8

NO.	DATE	REVISIONS
1	7-18-73	Revised G'W and 8" S in Catwing Court.

WHITMAN, REQUARDT & ASSOCIATES
 ENGINEERS
 1304 ST. PAUL ST.
 BALTIMORE, MARYLAND

DEPARTMENT OF PUBLIC WORKS
 HOWARD COUNTY, MARYLAND
 5-29-73
W. O. Rebert
 CHIEF BUREAU OF ENGINEERING

CONTRACT NO. C-2536DW8S

PLAN OF
 WATER AND SEWER MAINS

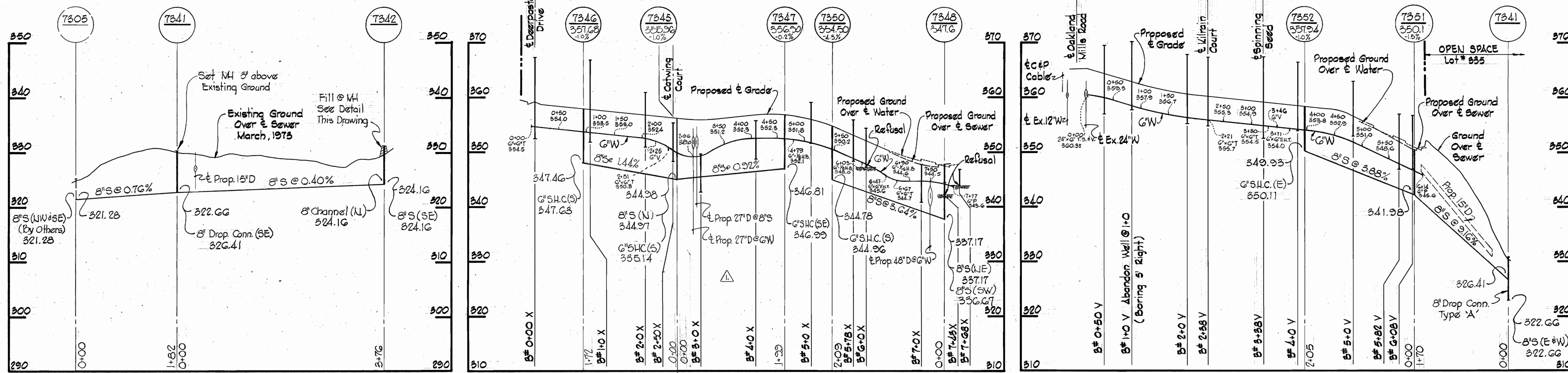
COLUMBIA
 VILLAGE OF OWEN BROWN
 ELECTION DISTRICT GUILFORD No. 6

DRAWING NO. 2 OF 3
 SCALE 1" = 50'

SPINNING SEED

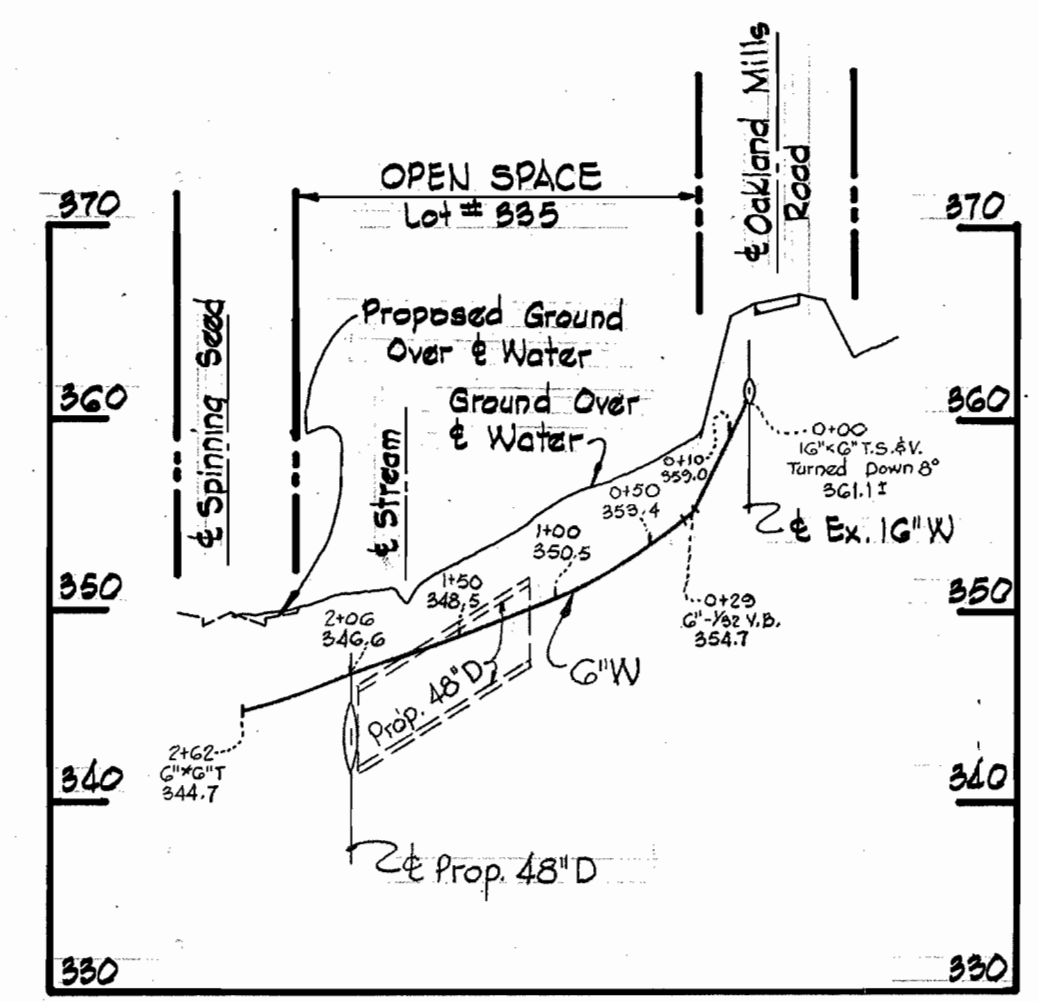
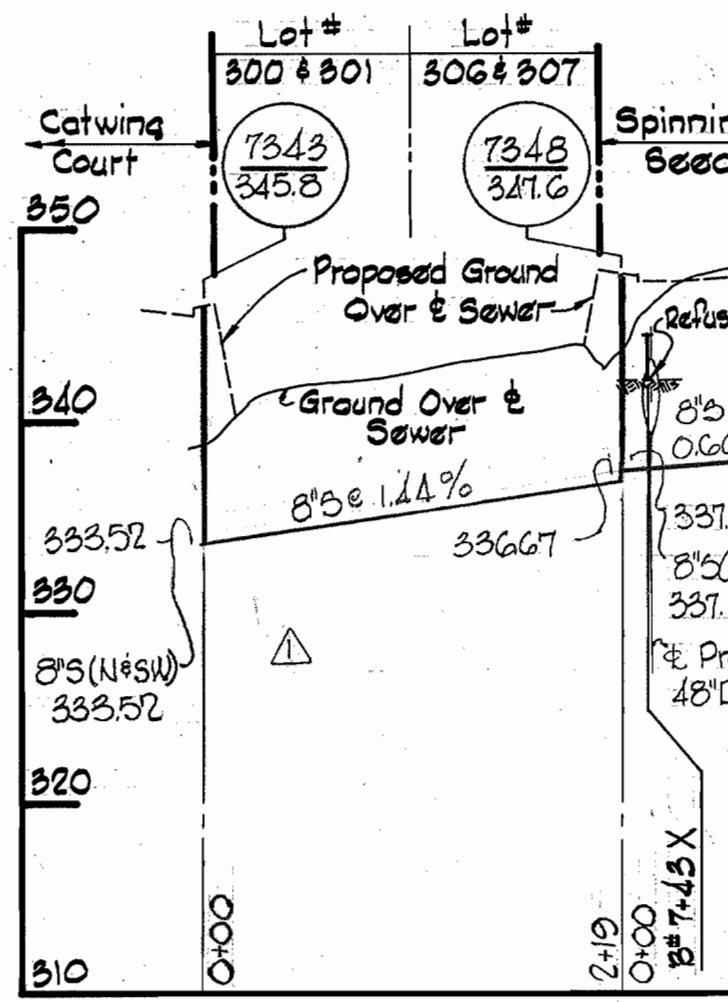
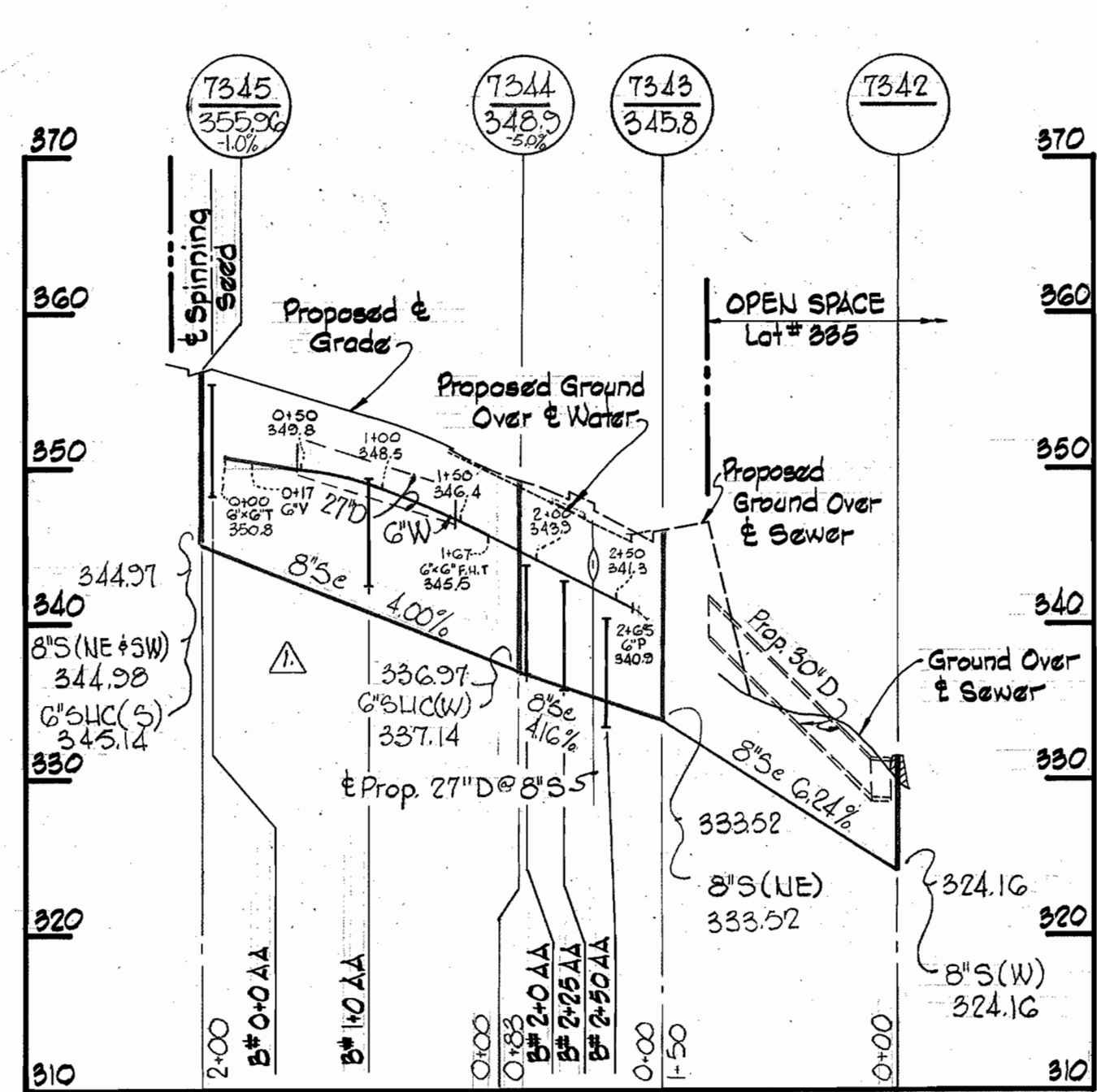
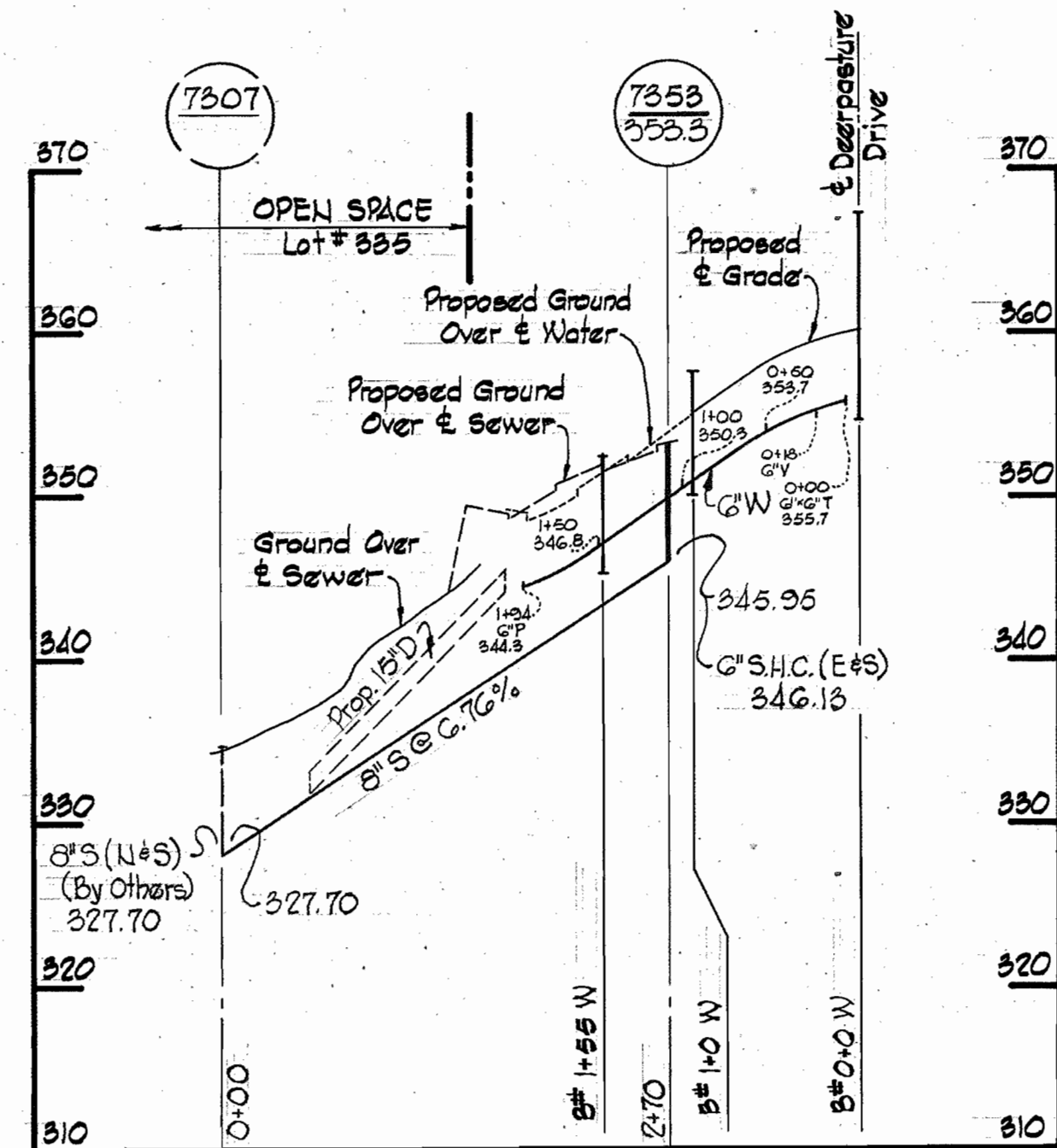
DEERPASTURE DRIVE

OPEN SPACE LOT # 335



KILRAIN COURT

CATWING COURT

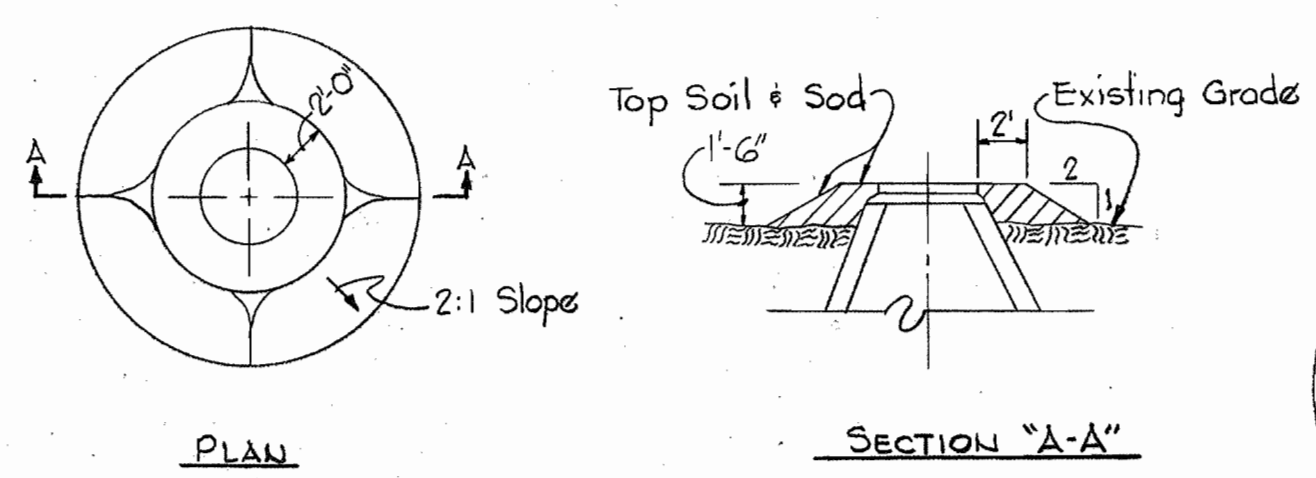


GENERAL NOTES

1. Approximate location of existing mains are shown. The Contractor shall take all necessary precautions to protect existing mains and services and maintain uninterrupted supply. Any damage incurred shall be repaired immediately.
2. All pipe elevations shown are invert elevations.
3. The Contractor shall locate existing utilities a minimum of two weeks in advance of construction operations in vicinity of utilities.
4. For all standard details see standards bound in Specifications.
5. All horizontal and vertical controls are based on Maryland State Datum.
6. Clear all utilities by a minimum of 6", clear all poles by a minimum of 2'-0" or tunnel as required.
7. All water mains to have a minimum of 3/4" cover.
8. Block all fittings with concrete see standards bound in Specifications.
9. Cost of strapping fire hydrants and valves to trees to be included in unit price bid for furnishing and laying of water mains.
10. All fire hydrants shall be strapped and buttressed in accordance with standard details.
11. Bury line elevations on fire hydrants shall be set to elevations shown on drawings.
12. All manhole to be 4'-0" inside diameter.
13. The Contractor shall provide a joint in all sewer mains within 2'-0" of exterior manhole walls.
14. Ground over water and/or sewer was taken from contour maps based on aerial photography except where dated.
15. Manholes constructed under Contract C-2535-S will be of the precast type. Either bricked up openings or "A-Lok" type joints with 2 foot stubs will be provided for connections to be made under this contract.

PROFILES

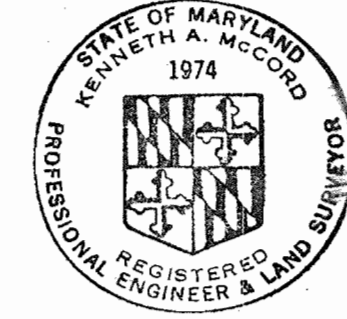
Scale: Horiz. 1"=100'
Vert. 1"=10'



DETAIL OF FILL AROUND MH# 7342

No Scale

Handwritten signature



Village of Owen Brown
Part 3 of 3
Section 2, Area 3
Contract No. C-2536 D-W/S

WHITMAN, REQUARDT & ASSOCIATES ENGINEERS 1304 ST. PAUL ST. BALTIMORE, MARYLAND	DEPARTMENT OF PUBLIC WORKS HOWARD COUNTY, MARYLAND 5-29-73 <i>W. O. Galbraith</i> CHIEF BUREAU OF ENGINEERING	CONTRACT NO. C-2536DW/S	PROFILES AND DETAILS OF WATER AND SEWER MAINS	COLUMBIA VILLAGE OF OWEN BROWN ELECTION DISTRICT GUILFORD No. 6	DRAWING NO. 3 OF 3	SCALE AS SHOWN
-----------------------------------------------------------------------------------------	---------------------------------------------------------------------------------------------------------------------------	-------------------------	--------------------------------------------------	-----------------------------------------------------------------------	--------------------------	----------------------

W. O. G758-2

JULY 13, 1973

Handwritten signature

WS 536 W/S/3

BRUNING 44510 18392