

CONTRACT C-2535 D W & S

VILLAGE OF OWEN BROWN

HOWARD COUNTY, MARYLAND

DEPARTMENT OF PUBLIC WORKS

QUANTITIES	
ITEM	QUANTITY
8" Sewer	6080 L.F.
8" Water	1080 L.F.
6" Water	5320 L.F.
Fire Hydrant	10

Note:
Auger Borings were made by the American Testing and Engineering Company for the Howard Research and Development Corporation in January, 1973. Information relative to refusal on auger are shown. Complete logs are available at the Howard County Department of Public Works.

Note:
Sewer House Connection to Lots # 160, 161, 163, 223, 241, and 242 will be constructed under Contract No. C-2533-S.



Kenneth A. McLeod

Village of Owen Brown
Part 2 and 3
Section 2, Area 3
Contract No. C-2535 D W & S

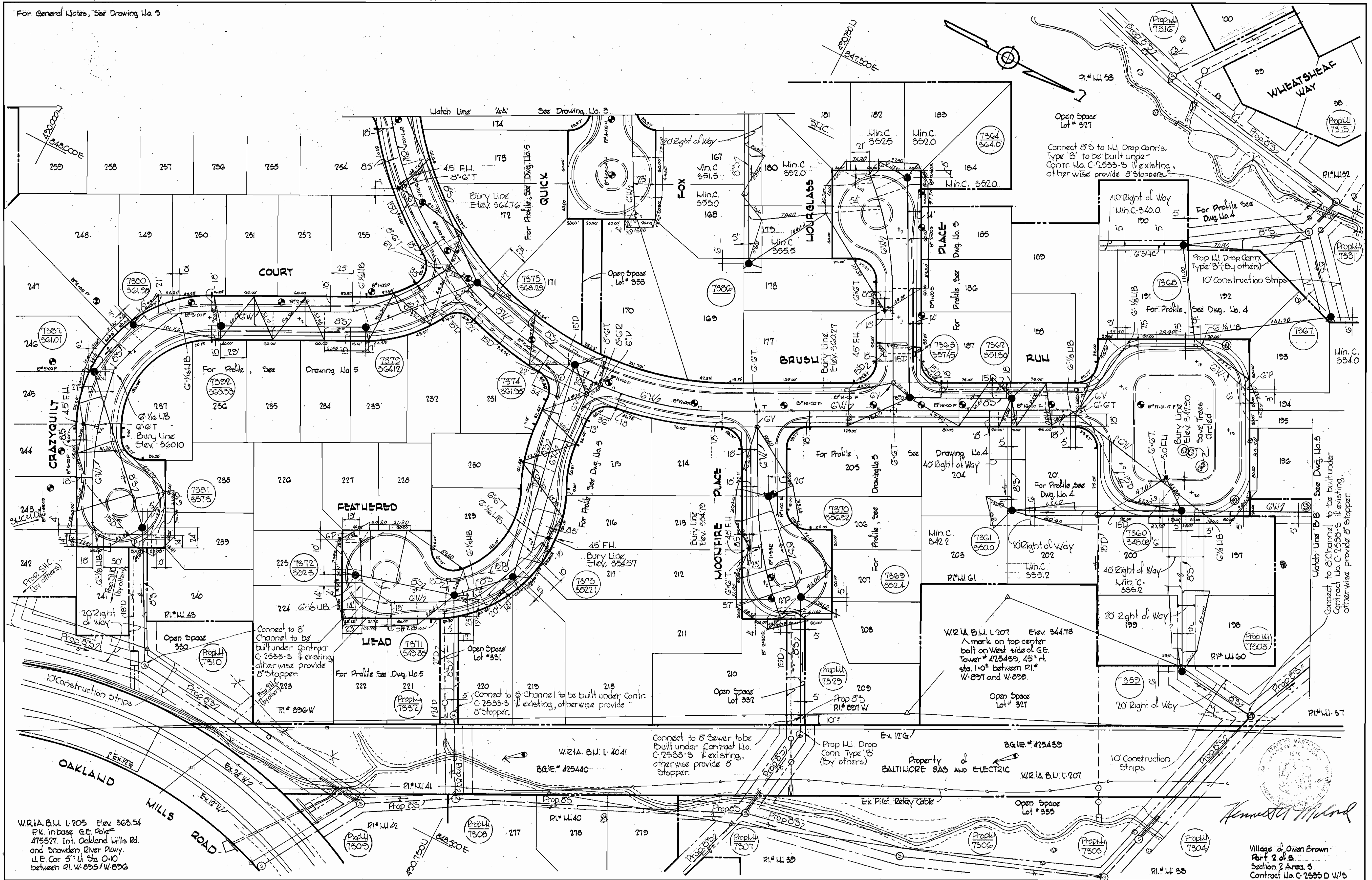
WHITMAN, REQUARDT & ASSOCIATES ENGINEERS 1304 ST. PAUL ST. BALTIMORE, MARYLAND	DEPARTMENT OF PUBLIC WORKS HOWARD COUNTY, MARYLAND DATE 5-29-73 <i>W. O. Lillard</i> CHIEF - BUREAU OF WATER AND SEWER	CONTRACT NO. C-2535 D W & S	LOCATION MAP OF WATER & SEWER MAIN EXTENSIONS	COLUMBIA VILLAGE OF OWEN BROWN ELECTION DISTRICT GUILFORD No. 6	DRAWING NO. 1 OF 5 SCALE 1"=800'
---	--	-----------------------------	--	---	-------------------------------------

W. O. 6758-2

AS-BUILT 4-9-74

MAY 29, 1973

For General Notes, See Drawing No. 5



W.R.A.B.M. L. 205 Elev. 363.54
 P.K. in base G.E. Pole # 475527 Int. Oakland Mills Rd. and Snowden River Pkwy.
 I.E. Cor. 5' W. Sta. 0+10 between P.I. W. 895/W. 896

W.R.A.B.M. L. 207 Elev. 344.78
 A mark on top center bolt on West side of G.E. Tower # 475489, 45' rt. sta. 1+02 between P.I. # W. 897 and W. 898.

WHITMAN, REQUARDT & ASSOCIATES
 ENGINEERS
 1304 ST. PAUL ST.
 BALTIMORE, MARYLAND

DEPARTMENT OF PUBLIC WORKS
 HOWARD COUNTY, MARYLAND
 5-24-73
W. O. Galt
 CHIEF BUREAU OF ENGINEERING

CONTRACT NO. C 535 DW 85

PLAN OF WATER & SEWER MAINS

COLUMBIA VILLAGE OF OWEN BROWN
 ELECTION DISTRICT GUILFORD NO. 6

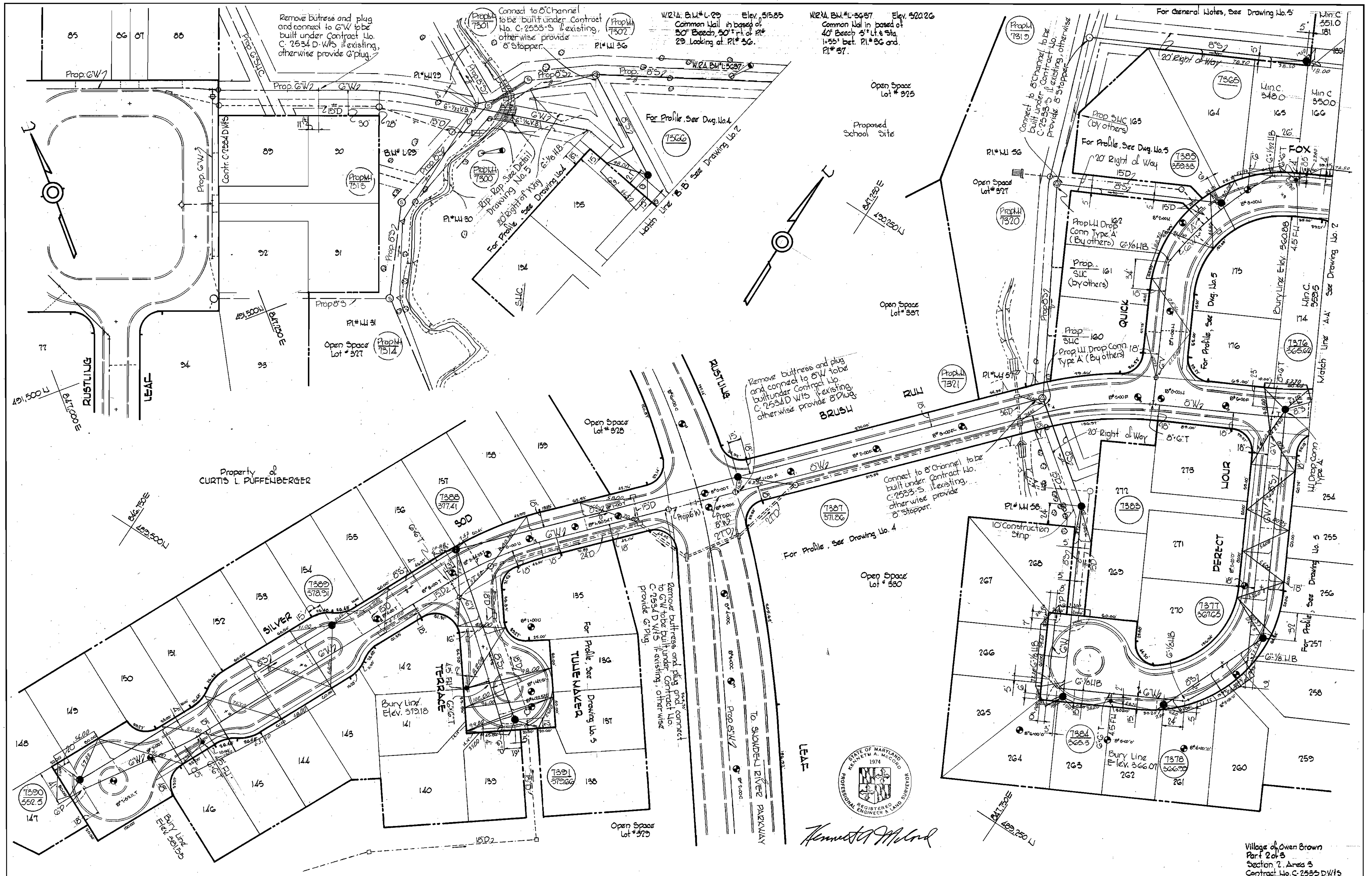
DRAWING NO. 2 OF 5
SCALE 1" = 50'

W. O. G 758-2

FB# 5355, 5375 MAY 29, 1973

WS 535 W&S/2

BRUNING 44510 1B392

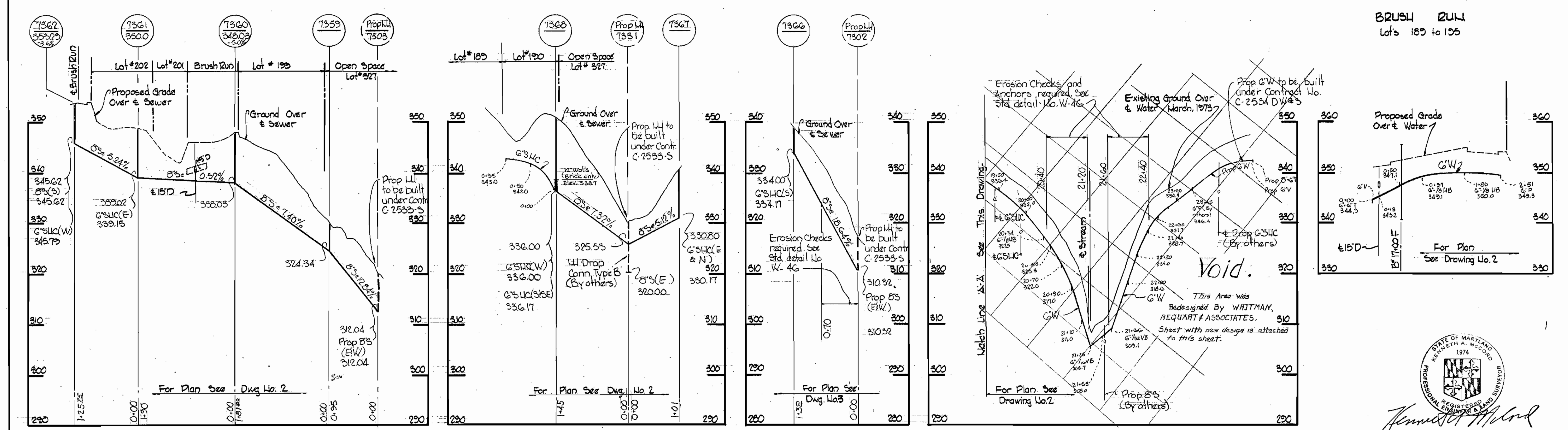
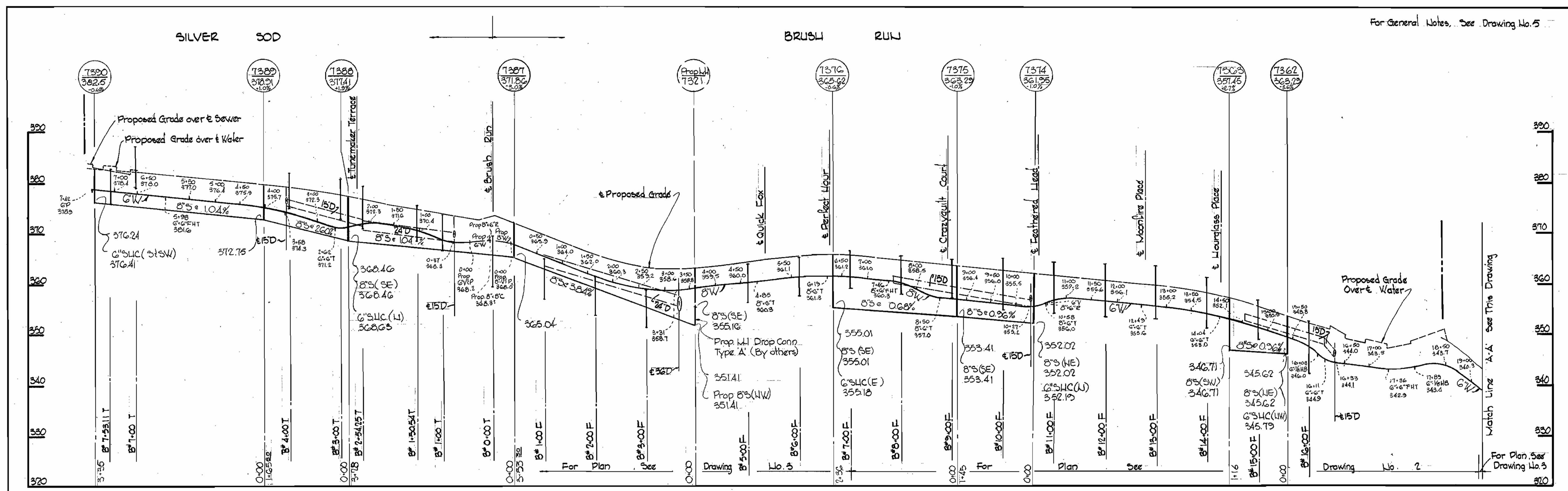


WHITMAN, REQUARDT & ASSOCIATES ENGINEERS 1304 ST. PAUL ST. BALTIMORE, MARYLAND	DEPARTMENT OF PUBLIC WORKS HOWARD COUNTY, MARYLAND 5-29-73 <i>W O Puffenberger</i> CHIEF BUREAU OF ENGINEERING	CONTRACT NO. C-535DW8S	PLAN OF WATER & SEWER MAINS	COLUMBIA VILLAGE OF OWEN BROWN ELECTION DISTRICT GUILFORD NO. 6	DRAWING NO. 3 OF 5 SCALE 1" = 50' Village of Owen Brown Part 2 of 3 Section 2, Area 3 Contract No. C-2533 DW/S
---	--	------------------------	--------------------------------	---	---

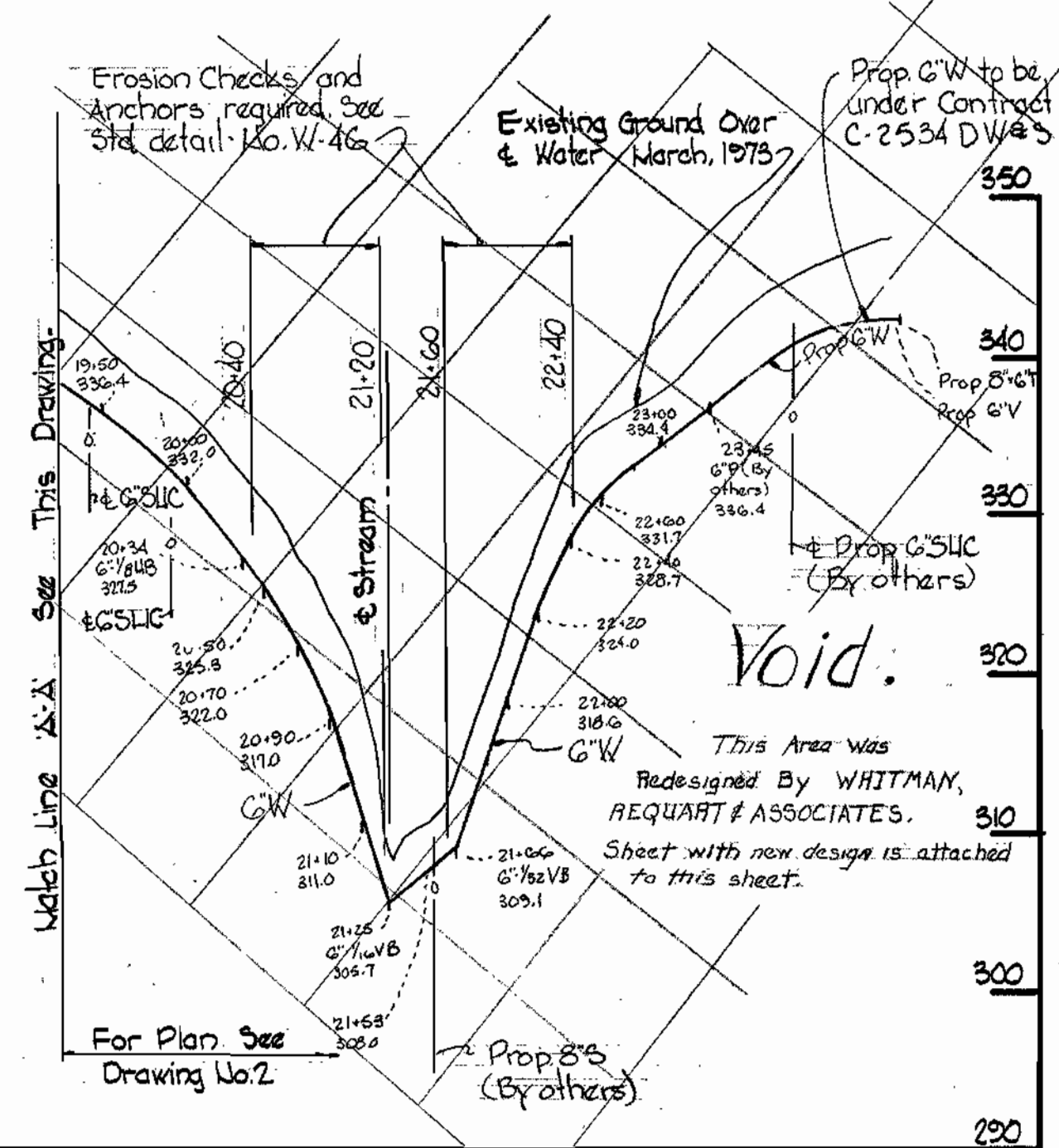
WS 535 W&S/3

BRUNING 44-510 10392

For General Notes, See Drawing No. 5



BRUSH RUN
Lots 189 to 195



Village of Owen Brown
Part 2 of 3
Section 2 Area 5
Contract No. C-2535 DW/5

WHITMAN, REQUARDT & ASSOCIATES ENGINEERS 1304 ST. PAUL ST. BALTIMORE, MARYLAND	DEPARTMENT OF PUBLIC WORKS HOWARD COUNTY, MARYLAND 5-29-73 DATE	CONTRACT NO. C-2535 DW/5 W. O. Falter CHIEF-BUREAU OF ENGINEERING	PROFILES OF WATER & SEWER MAINS	COLUMBIA VILLAGE OF OWEN BROWN ELECTION DISTRICT GUILFORD NO. 6	DRAWING NO. 4 OF 5 SCALE H:1"=100' V:1"=10' MAY 29, 1973
---	--	---	------------------------------------	---	--

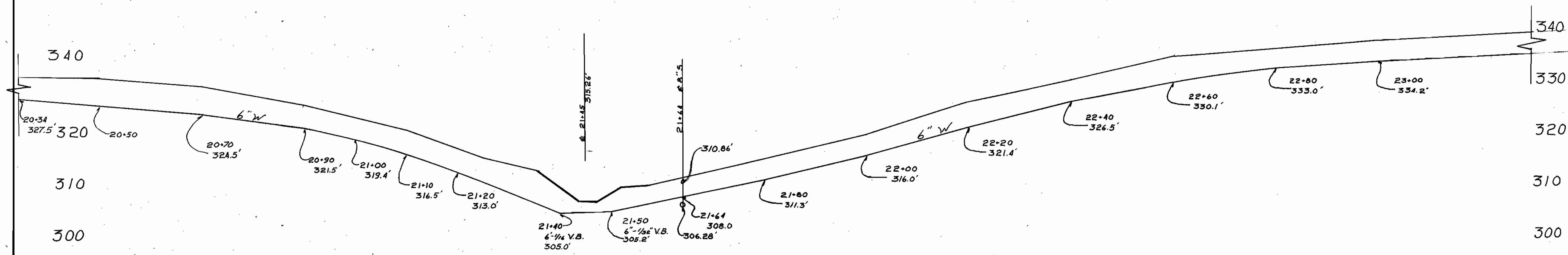
W. O. 67582

WS 535 W&S/H

BRUNING 44-510 16392

REVISED DRAWING AND PROFILE: NOTES;

- A REVISION OF BRUSH RUN EXTENDED 6" WATER MAIN
- B SLOPE DOWN STARTS AT STA 21+10, AND EXTENDS THROUGH STA. 22+00.
- C CRITICAL POINT IS STA 21+64, 6" WATER MAIN CROSSES AN 8" SANITARY SEWER.
- D THIS DRAWING WILL BE KNOWN AS 4A OF 5 AND SO ATTACHED.
- E REVISION DRAWING MADE BY WHITMAN, REQUARDT & ASSOC. OCTOBER 18+19, 1975.



WS 535 W&S/4-A

Whitman, Requardt & Associates Engineers 1304 St. Paul St. Baltimore, Maryland	DEPARTMENT OF PUBLIC WORKS HOWARD COUNTY, MARYLAND DATE _____ CHIEF-BUREAU OF WATER AND SEWER	CONTRACT NO. C-535-DWS	Profile of 6" Water Main (revised)	COLUMBIA VILLAGE OF OWEN BROWN ELECTION DISTRICT GUILFORD No. 6	DRAWING NO. 4A OF 5	SCALE Horz 1"=10' Vert 1"=10'
---	---	------------------------	------------------------------------	---	---------------------	-------------------------------------

As Built 4-9-74

