

COLUMBIA

HOWARD COUNTY, MARYLAND

6TH ELECTION DISTRICT

CONTRACT NO. 2523-D-W & S

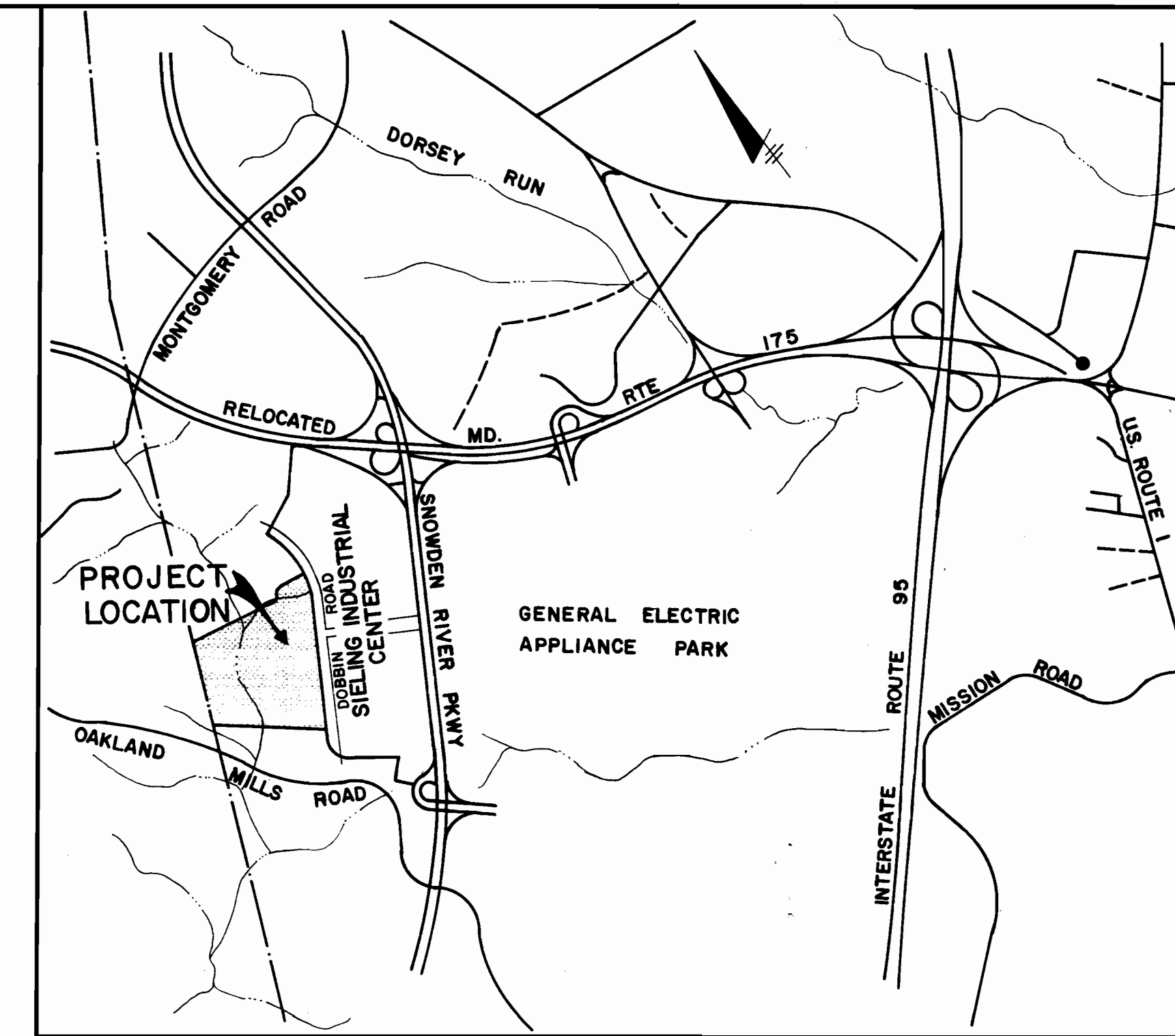
WATER AND SANITARY PLANS

SIELING INDUSTRIAL CENTER

SECTION I AREA 2

OWNER AND DEVELOPER

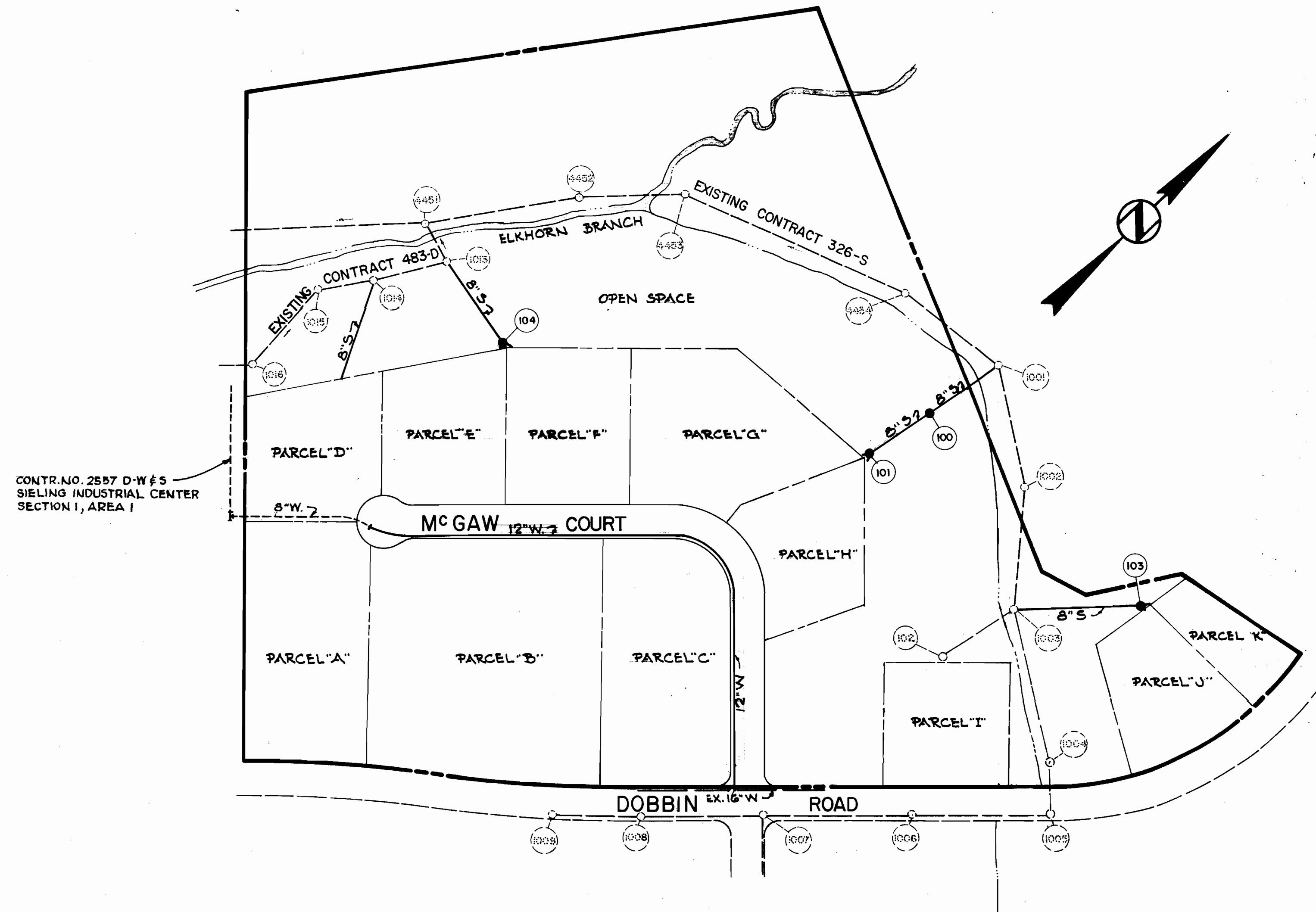
THE HOWARD RESEARCH AND DEVELOPMENT CORP.
COLUMBIA, MARYLAND



VICINITY MAP

SCALE: 1"=200'

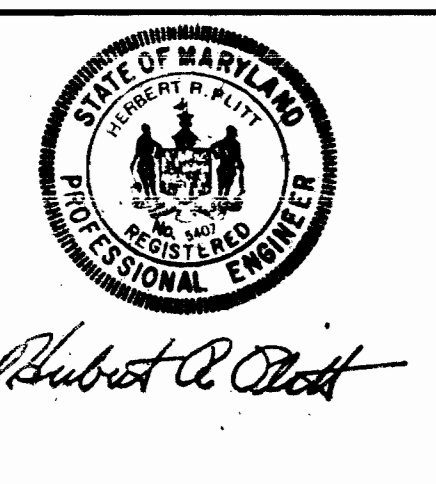
QUANTITIES	
ITEM	QUANTITY
6" WATER	13L.F.
8" WATER	390L.F.
12" WATER	1430L.F.
AIR RELEASE VALVE (2")	1
FIRE HYDRANTS (6")	2
6" VALVES	2
8" VALVES	9
12"x6" TEES	5
METER VAULTS	4
15"x12" REDUCER	1
8" SANITARY	1188L.F.
STD. MANHOLES	4



CONTR. NO. 2523-D-W & S
SIELING INDUSTRIAL CENTER
SECTION I, AREA 1

GENERAL NOTES

- APPROXIMATE LOCATION OF EXISTING MAINS ARE SHOWN. THE CONTRACTOR SHALL TAKE ALL NECESSARY PRECAUTIONS TO PROTECT EXISTING AND SERVICES AND MAINTAIN UNINTERRUPTED SUPPLY. ANY DAMAGE INCURRED SHALL BE REPAIRED IMMEDIATELY.
- ALL PIPE ELEVATIONS SHOWN ARE INVERT ELEVATIONS.
- THE CONTRACTOR SHALL LOCATE EXISTING UTILITIES A MINIMUM OF TWO WEEKS IN ADVANCE OF CONSTRUCTION OPERATIONS IN VICINITY OF UTILITIES.
- FOR ALL STANDARD DETAILS SEE STANDARDS BOUND IN SPECIFICATIONS.
- THE CONTRACTOR SHALL PROVIDE A JOINT IN ALL SEWER MAINS WITHIN 2'-0" OF EXTERIOR MANHOLE WALLS.
- ALL HORIZONTAL AND VERTICAL CONTROLS ARE BASED ON MARYLAND STATE DATUM.
- ALL MANHOLES SHALL BE 4'-0" INSIDE DIAMETER UNLESS OTHERWISE NOTED.
- ALL WATER MAINS TO HAVE A MIN. OF 3 1/2' COVER UNLESS OTHERWISE NOTED.
- BLOCK ALL FITTINGS WITH CONCRETE, SEE STANDARDS BOUND IN SPECIFICATIONS.
- BURY ELEVATIONS ON FIRE HYDRANTS SHALL BE SET TO THE ELEVATIONS SHOWN ON DRAWINGS.
- ALL FIRE HYDRANTS SHALL BE STRAPPED TO THE TEE & SHALL BE BUTTRESSED WITH CONCRETE IN ACCORDANCE WITH STANDARD DETAILS.
- COST OF STRAPPING FIRE HYDRANTS & VALVES TO TEES TO BE INCLUDED IN UNIT PRICE BID FOR FURNISHING & LAYING OF WATER MAINS.



Robert A. Clark

GREEN ASSOCIATES, INC.
CONSULTING ENGINEERS
BALTIMORE, MARYLAND

DEPARTMENT OF PUBLIC WORKS
HOWARD COUNTY, MARYLAND
DATE: 11-1-73
W.D. Felbert
CHIEF - BUREAU OF ENGINEERING

CONTRACT NO. 2523-D-W & S

TITLE SHEET

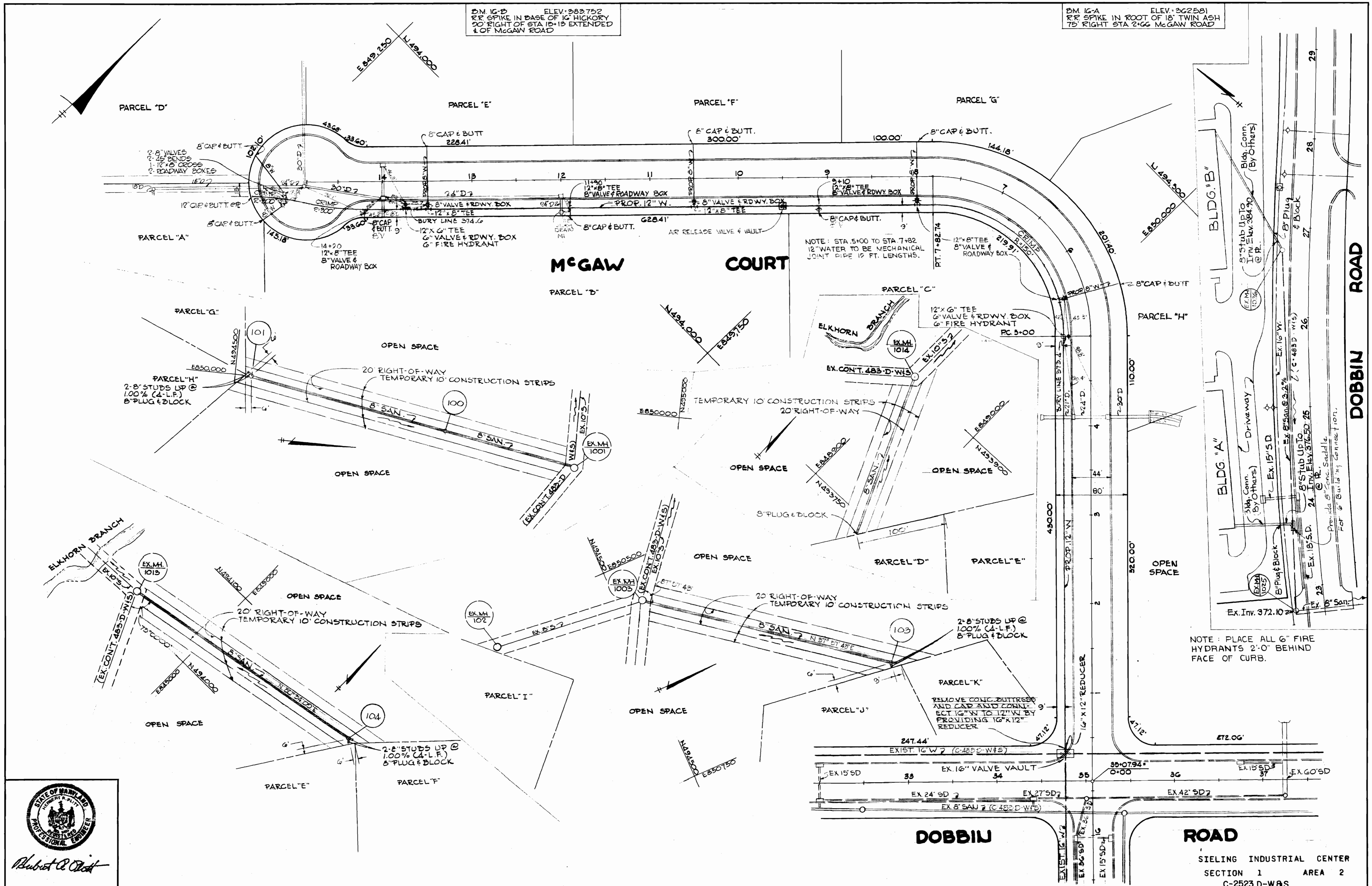
COLUMBIA
SEC. I, SIELING INDUSTRIAL CENTER, AREA 2
ELECTION DISTRICT GUILFORD NO. 6

DRAWING NO. 1 OF 3
SCALE 1"=200'

WS 523 W&S/1

BM. 16-B ELEV. 283.752
RR SPIKE IN BASE OF 16' HICKORY
20' RIGHT OF STA 10+19 EXTENDED
1/2 OF MCGAW ROAD

BM. 16-A ELEV. 302.581
RR SPIKE IN ROOT OF 18' TWIN ASH
70' RIGHT STA 2+66 MCGAW ROAD



NOTE: PLACE ALL 6" FIRE HYDRANTS 2'-0" BEHIND FACE OF CURB.



GREEN ASSOCIATES, INC.
CONSULTING ENGINEERS
BALTIMORE, MARYLAND

DEPARTMENT OF PUBLIC WORKS
HOWARD COUNTY, MARYLAND
11-1-73
DATE

CONTRACT NO. 523-D-W & S

PLAN OF WATER AND SEWER MAINS

COLUMBIA
SEC. 1, SIELING INDUSTRIAL CENTER, AREA 2
ELECTION DISTRICT GUILFORD NO. 6

DRAWING NO. 2 OF 3
SCALE 1"=50'

AS BUILT

WS 523 W45/2

