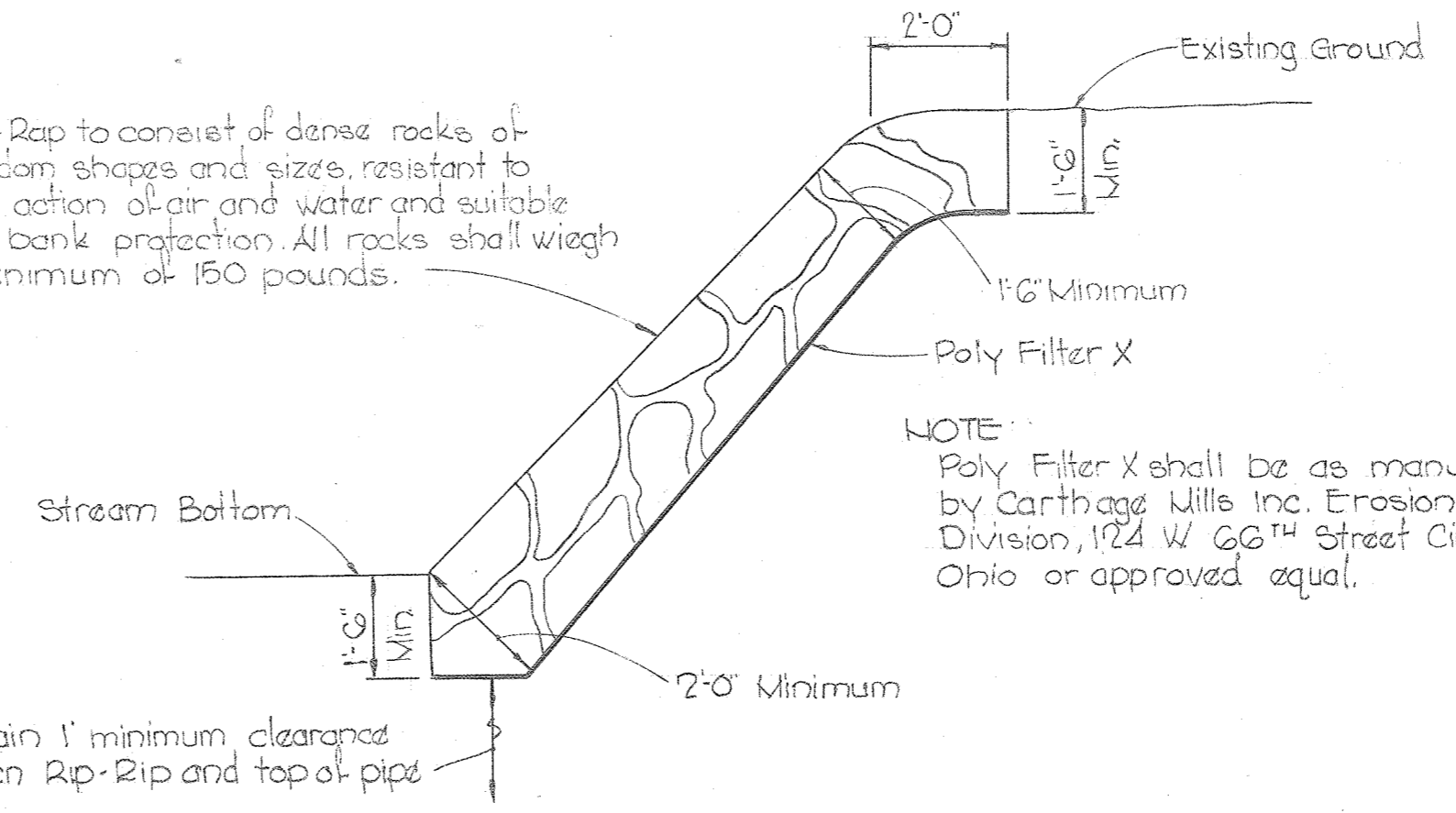


VICINITY MAP
Scale: 1:2000

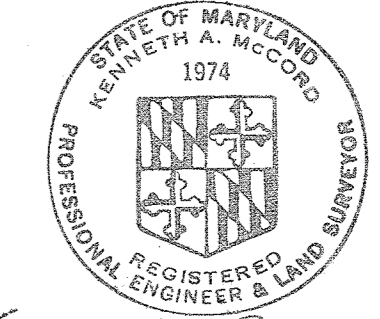
GENERAL NOTES

1. Approximate location of existing mains are shown. The Contractor shall take all necessary precautions to protect existing mains and services and maintain uninterrupted supply. Any damage incurred shall be repaired immediately.
2. All pipe elevations shown are invert (I) elevations.
3. The Contractor shall locate existing utilities a minimum of two weeks in advance of construction operations in vicinity of utilities.
4. For all standard details see standards bound in Specifications.
5. Clear all utilities by a minimum of 6'; clear all poles by 2'-0" minimum or tunnel as required.
6. The Contractor shall provide a joint in all sewer mains within 2'-0" of exterior manhole walls.
7. All manholes shall be 4'-0" inside diameter.
8. All water mains to have a minimum of 3'-0" cover unless otherwise noted.
9. Block all fittings with concrete, see standards bound in Specifications.
10. Bury Line elevations on fire hydrants shall be set to the elevations shown on the drawings.
11. All fire hydrants shall be strapped to the tee and shall be buttressed with concrete in accordance with standard details.
12. All W.L.C.'s to be 12" diameter unless otherwise noted.
13. All horizontal and vertical controls are based on Maryland State Datum.

QUANTITIES	
8" Sewer	1410 LF
8" Water	125 LF
6" Water	1035 LF
Fire Hydrants	3



RIP-RAP DETAIL
Scale: 3/8"=1'-0"



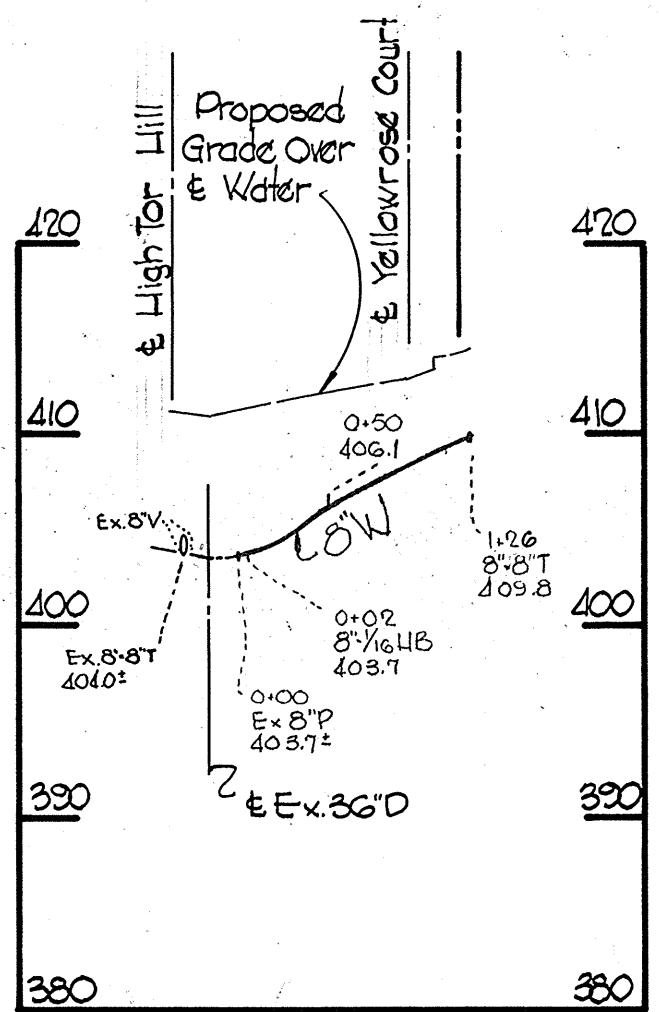
Kenneth A. McLeod

FB# 5338 Stakeout and Diary
All Sewer - A.C.P.
All Water - C.I.P.

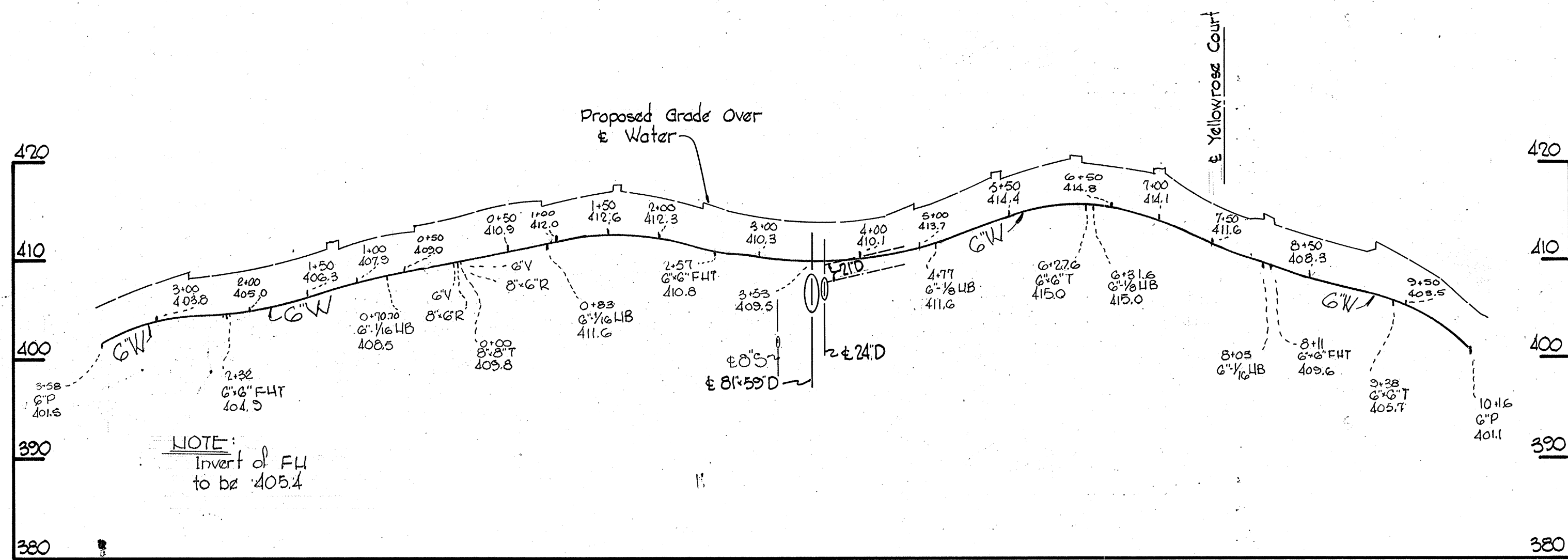
Village of Longreach
Parcel 'A'
Section 1, Area 1
Contract No. C-2519 W/S

<p>WHITMAN, REQUARDT & ASSOCIATES ENGINEERS 1304 ST. PAUL ST. BALTIMORE, MARYLAND</p>	<p>DEPARTMENT OF PUBLIC WORKS HOWARD COUNTY, MARYLAND 2-22-73 DATE</p> <p><i>W. O. Gilbert</i> CHIEF BUREAU OF ENGINEERING</p>	<p>CONTRACT NO. C-2519 W/S</p>	<p>PLAN AND DETAIL OF WATER AND SEWER MAINS</p>	<p>COLUMBIA VILLAGE OF LONGREACH ELECTION DISTRICT GUILFORD NO. 6</p>	<p>DRAWING NO. 1 OF 2</p>	<p>SCALE AS SHOWN</p>	<p>502.487 502.488</p>
--	---	---------------------------------------	--	--	----------------------------------	------------------------------	----------------------------

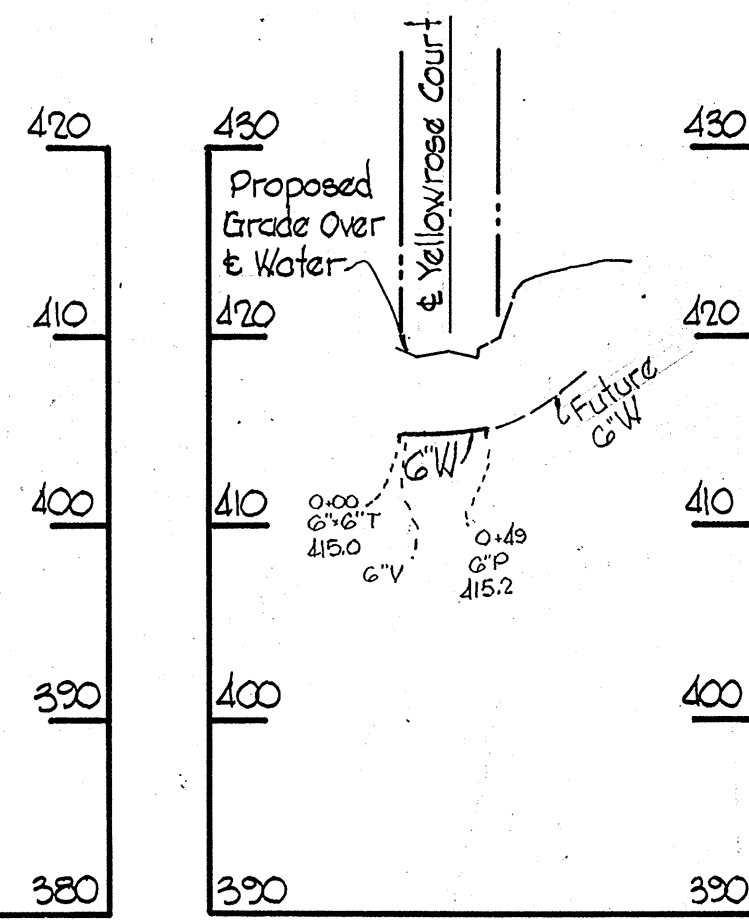
LODE STAR LANE



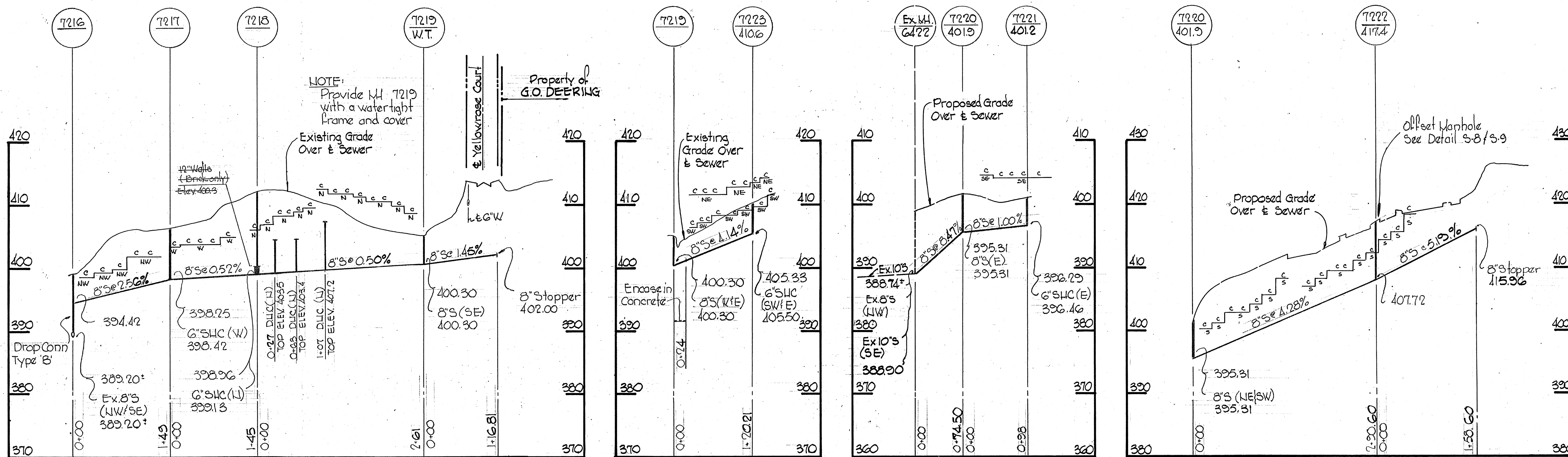
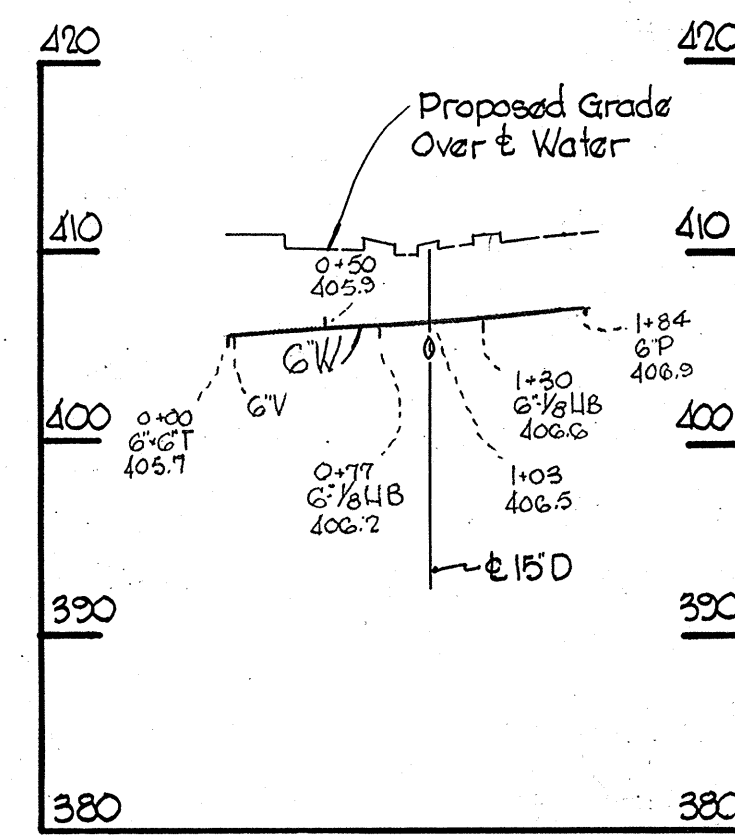
YELLOWROSE COURT



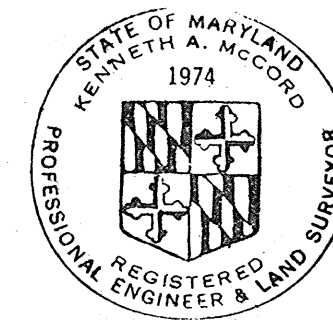
YELLOWROSE COURT
G.W. CROSSING



YELLOWROSE COURT
CUL-DE-SAC



ALL SEWER - ACP
ALL WATER - C.I.P.



Kenneth A. McCord

Village of Longreach
Parcel 'L'
Section 1, Areal
Contract No. C-2519 W15

WHITMAN, REQUARDT & ASSOCIATES
ENGINEERS
1304 ST. PAUL ST.
BALTIMORE, MARYLAND

DEPARTMENT OF PUBLIC WORKS
HOWARD COUNTY, MARYLAND
DATE: 2-22-73
W O P *W O P*
CHIEF-BUREAU OF ENGINEERING

CONTRACT NO. C-2519 W&S

PROFILES OF
WATER AND SEWER MAINS

COLUMBIA
VILLAGE OF LONGREACH
ELECTION DISTRICT GUILFORD NO.6

DRAWING
NO. 2
OF 2
SCALE
H:V = 1"=10'

MARCH 11, 1974 AS BUILT