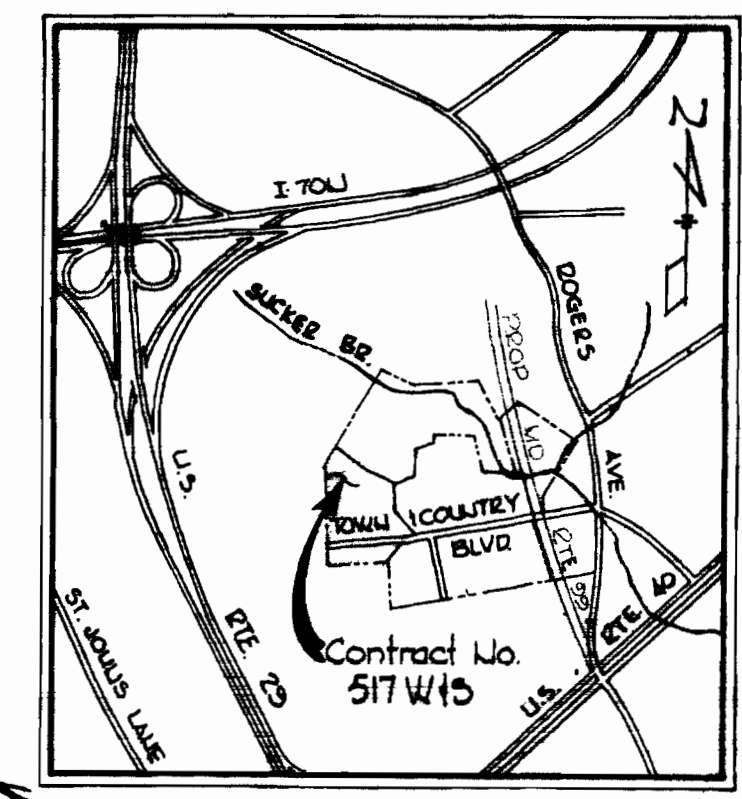
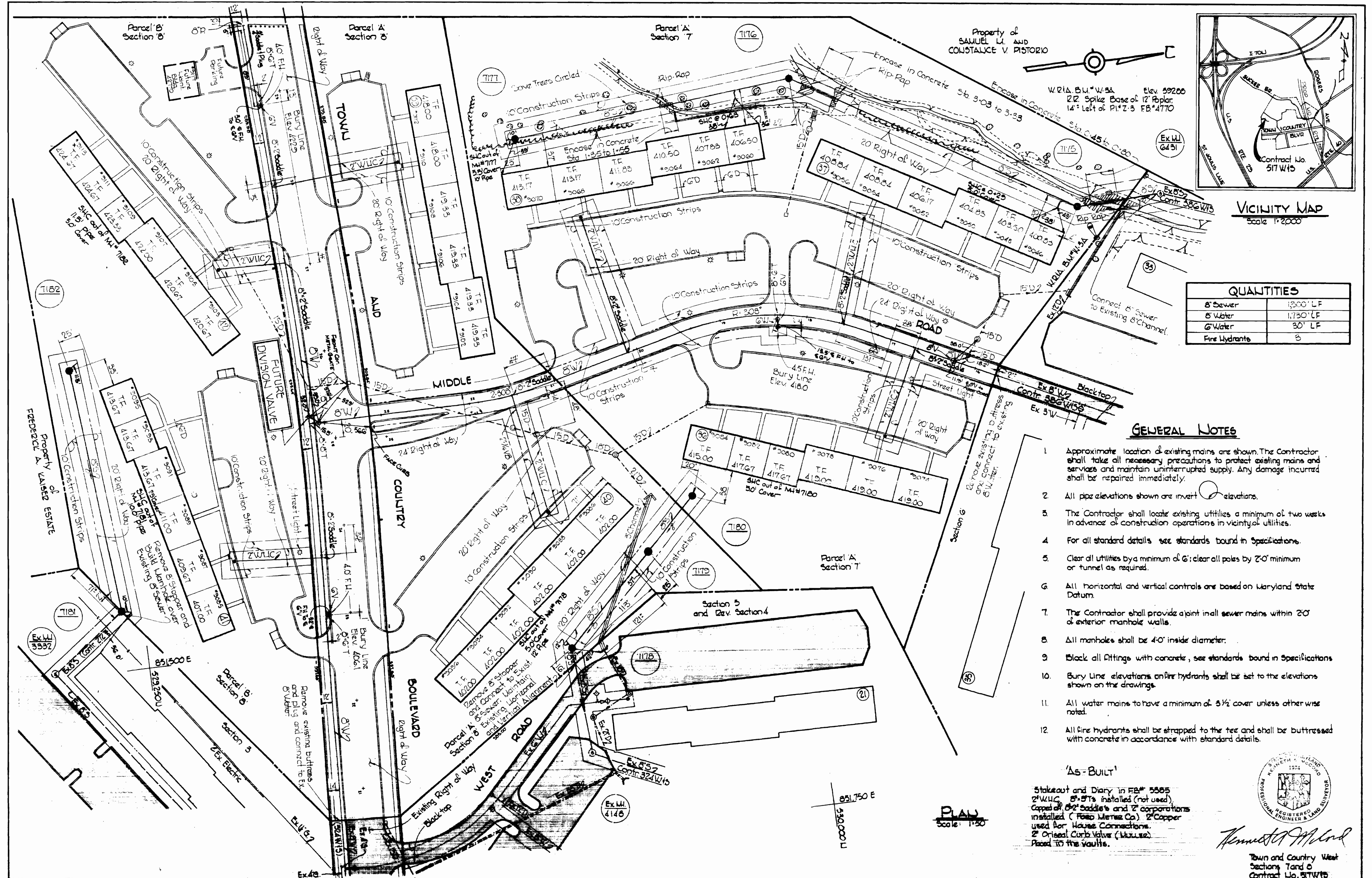


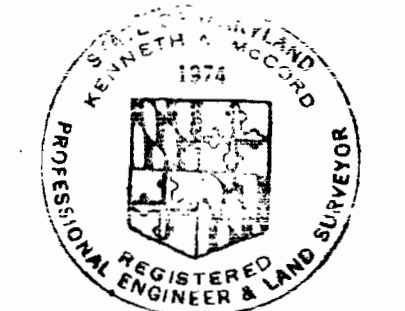
WS 517-W&S/1



QUANTITIES	
8" Sewer	1300' LF
8" Water	1,730' LF
6" Water	30' LF
Fire Hydrants	3

- GENERAL NOTES**
1. Approximate location of existing mains are shown. The Contractor shall take all necessary precautions to protect existing mains and services and maintain uninterrupted supply. Any damage incurred shall be repaired immediately.
  2. All pipe elevations shown are invert elevations.
  3. The Contractor shall locate existing utilities a minimum of two weeks in advance of construction operations in vicinity of utilities.
  4. For all standard details see standards bound in Specifications.
  5. Clear all utilities by a minimum of 6'; clear all poles by 2'-0" minimum or tunnel as required.
  6. All horizontal and vertical controls are based on Maryland State Datum.
  7. The Contractor shall provide a joint in all sewer mains within 20' of exterior manhole walls.
  8. All manholes shall be 4'-0" inside diameter.
  9. Block all fittings with concrete, see standards bound in Specifications.
  10. Bury Line elevations on fire hydrants shall be set to the elevations shown on the drawings.
  11. All water mains to have a minimum of 3 1/2' cover unless otherwise noted.
  12. All fire hydrants shall be strapped to the tee and shall be buttressed with concrete in accordance with standard details.

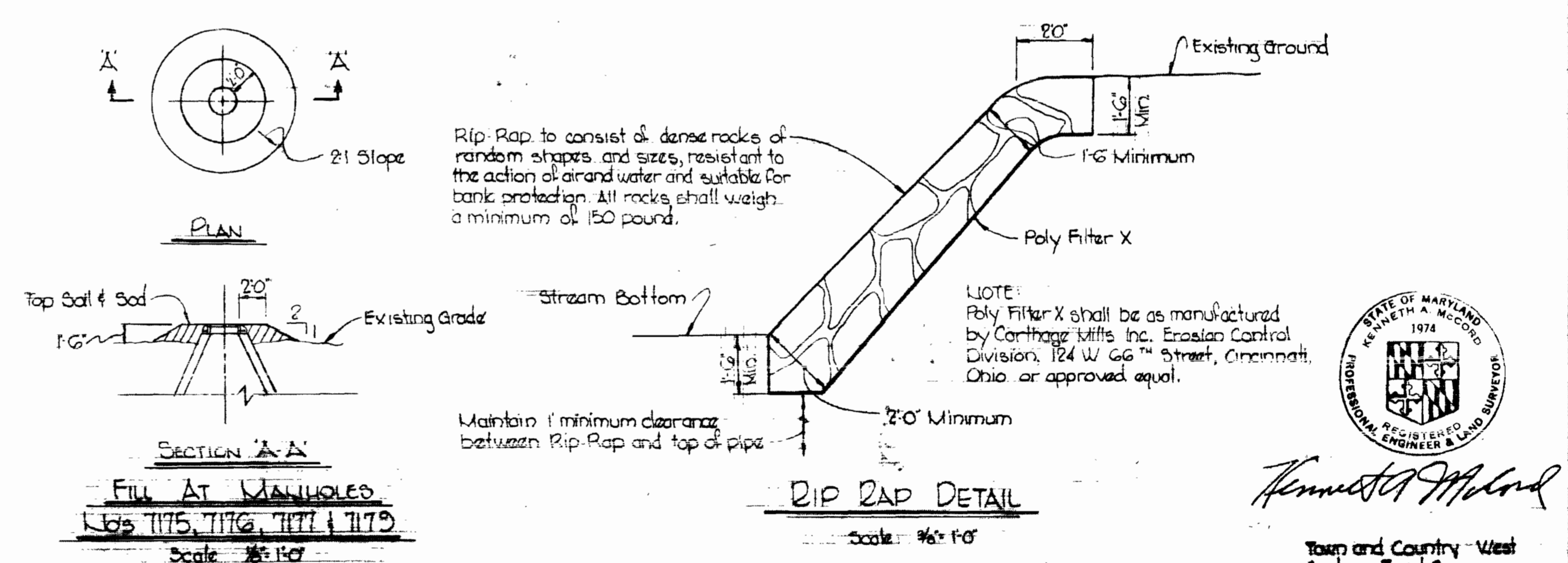
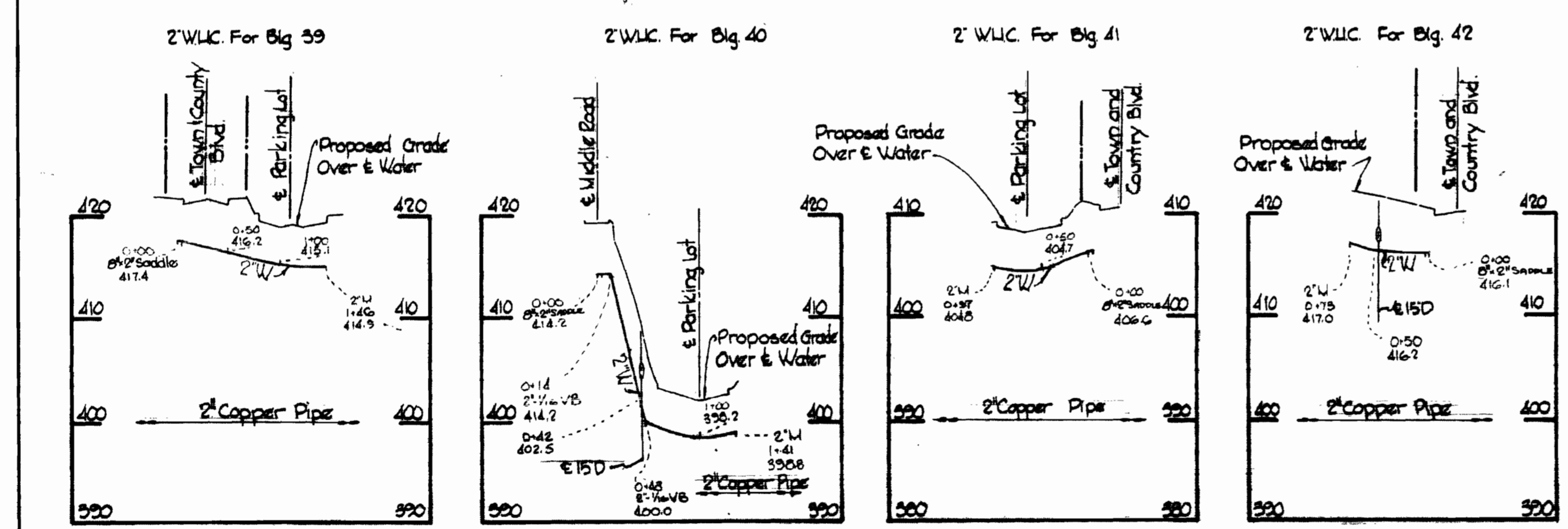
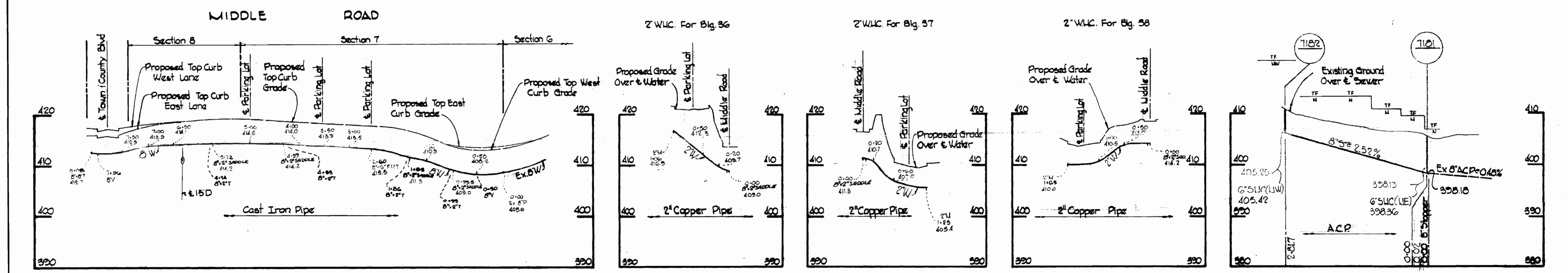
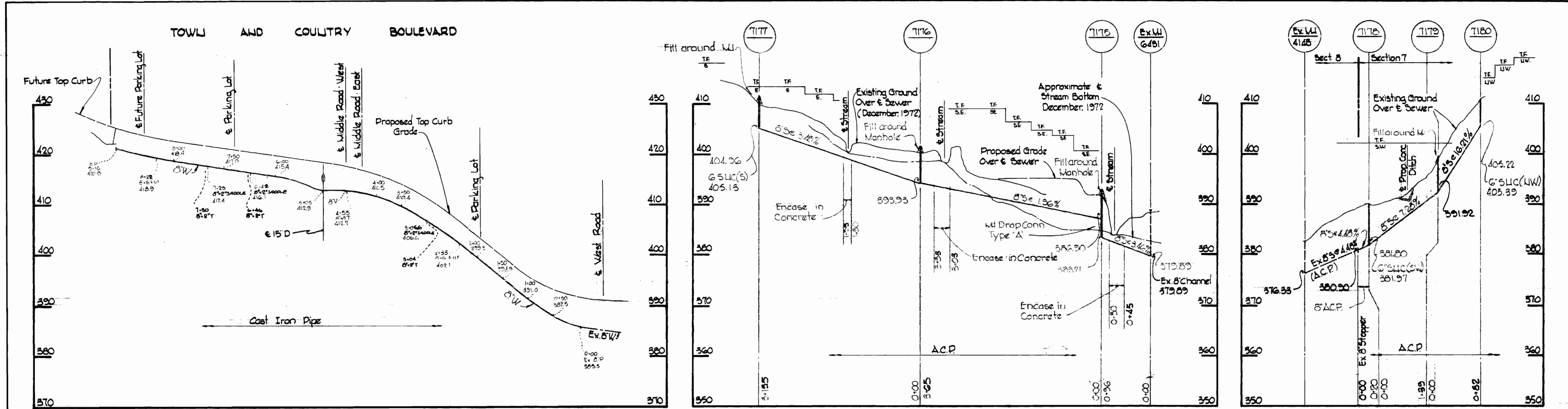
'AS-BUILT'  
 Stakeout and Diary in FB# 5565  
 2" WUC, 8" RTs installed (not used)  
 Caps of 8" Caddies and 2" corporations  
 installed (Foss Mierex Co) 2" Copper  
 used for House Connections.  
 2" Orical Curb Valve (Lubuse)  
 Placed to the vaults.



*Kenneth A. Melrod*  
 Town and Country West  
 Sections 5 and 6  
 Contract No. 517 W&S

<b>WHITMAN, REQUARDT &amp; ASSOCIATES</b> ENGINEERS 1304 ST. PAUL ST. BALTIMORE, MARYLAND	<b>DEPARTMENT OF PUBLIC WORKS</b> HOWARD COUNTY, MARYLAND 2-1-73 DATE <i>W. O. Gora</i> CHIEF - BUREAU OF WATER AND SEWER	<b>CONTRACT NO. 517 W&amp;S</b>	<b>PLAN OF WATER AND SEWER MAINS</b>	<b>ELECTION DISTRICT ELlicOTT CITY NO. 2</b>	<b>DRAWING NO. 1 OF 2</b> <b>SCALE AS SHOWN</b> 322-487 330-487
--	--	---------------------------------	--------------------------------------	--	--





WHITMAN, REQUARDT & ASSOCIATES ENGINEERS 1304 ST. PAUL ST. BALTIMORE, MARYLAND	DEPARTMENT OF PUBLIC WORKS HOWARD COUNTY, MARYLAND DATE: 2-1-73 W. O. FILLER CHIEF - BUREAU OF WATER AND SEWER	CONTRACT NO. 517 WBS	PROFILES AND DETAIL OF WATER AND SEWER MAINS	ELECTION DISTRICT ELLICOTT CITY NO. 2	DRAWING NO. 2 OF 2 SCALE AS SHOWN
---	--	----------------------	---	--	--------------------------------------

WS 517-W & S/2

RUNNING 44.510 14778