

VICINITY MAP
Scale: 1"=200'

W.R.I.A. B.M. #20 Elev. 158.546
RR Spike in Power Pole
G.I.E. #172312, C.I.P. #31, Int.
Old Washington Blvd. and
Augustines Ave.

W.R.I.A. B.M. #20-A Elev. 177.75
X-out Flange bolt fire hydrant,
W. side Augustines Ave. 850'
S. of Old Washington Blvd.

QUANTITIES	
8" Sewer	910
6" Water	200
Fire Hydrant	2

GENERAL NOTES

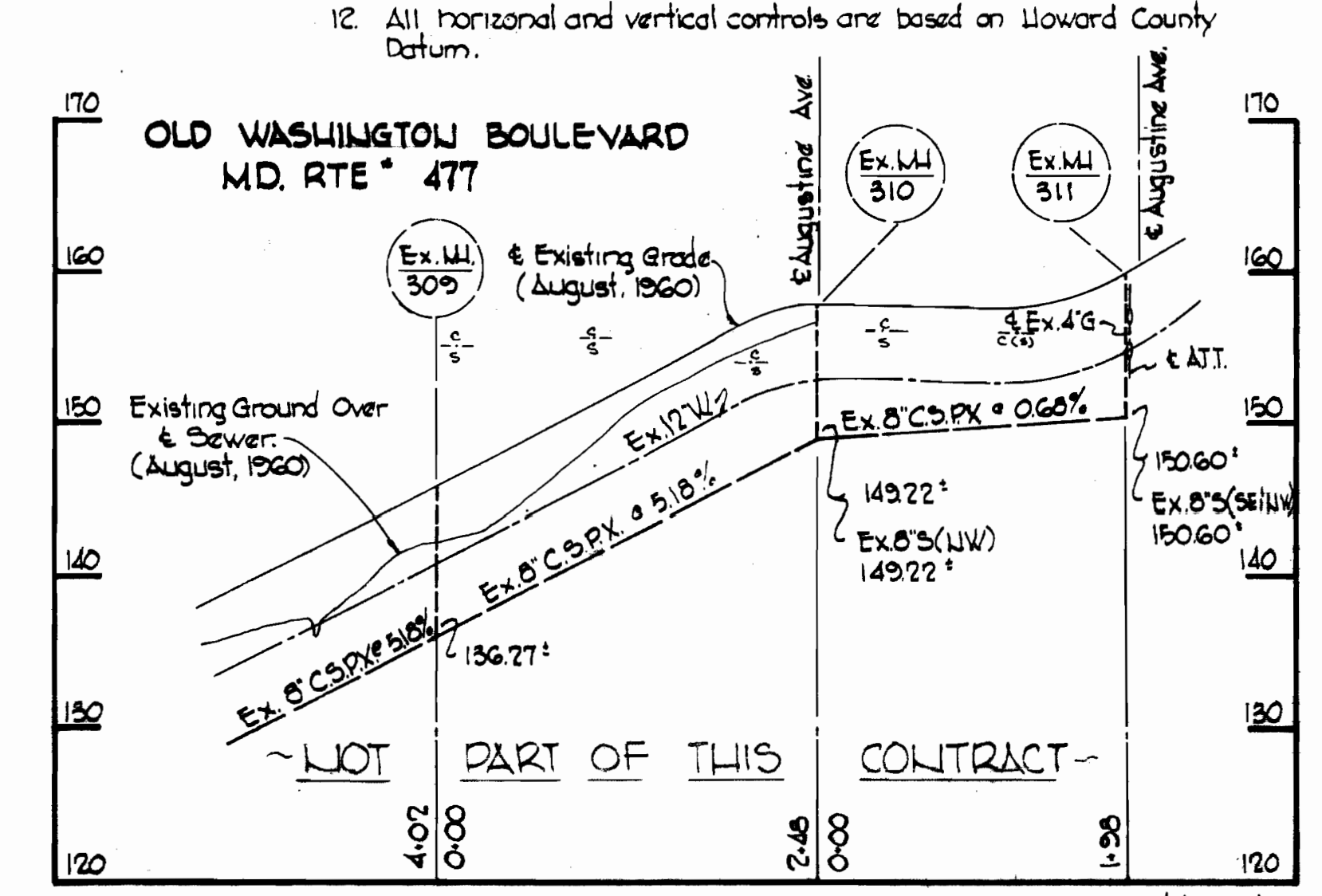
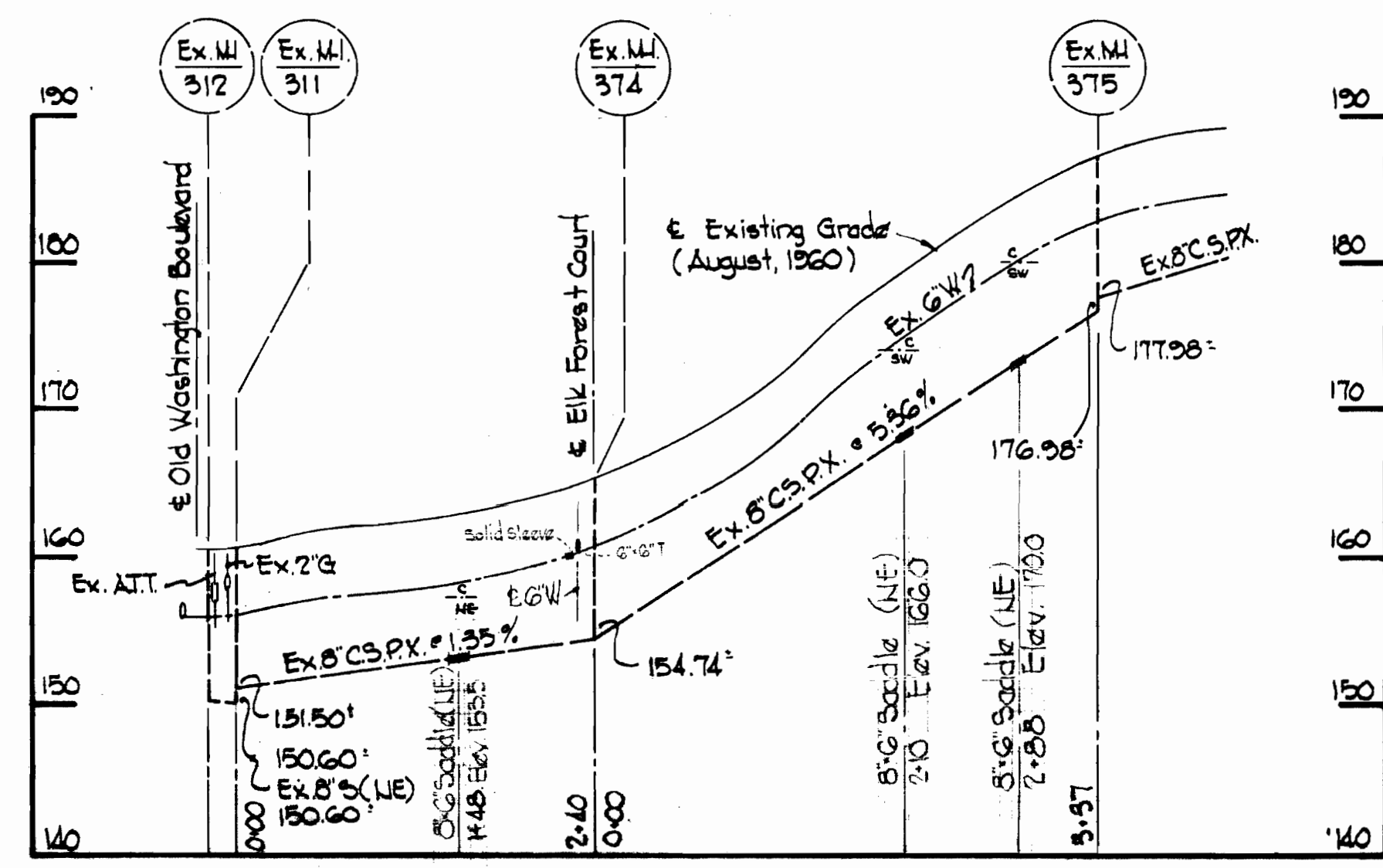
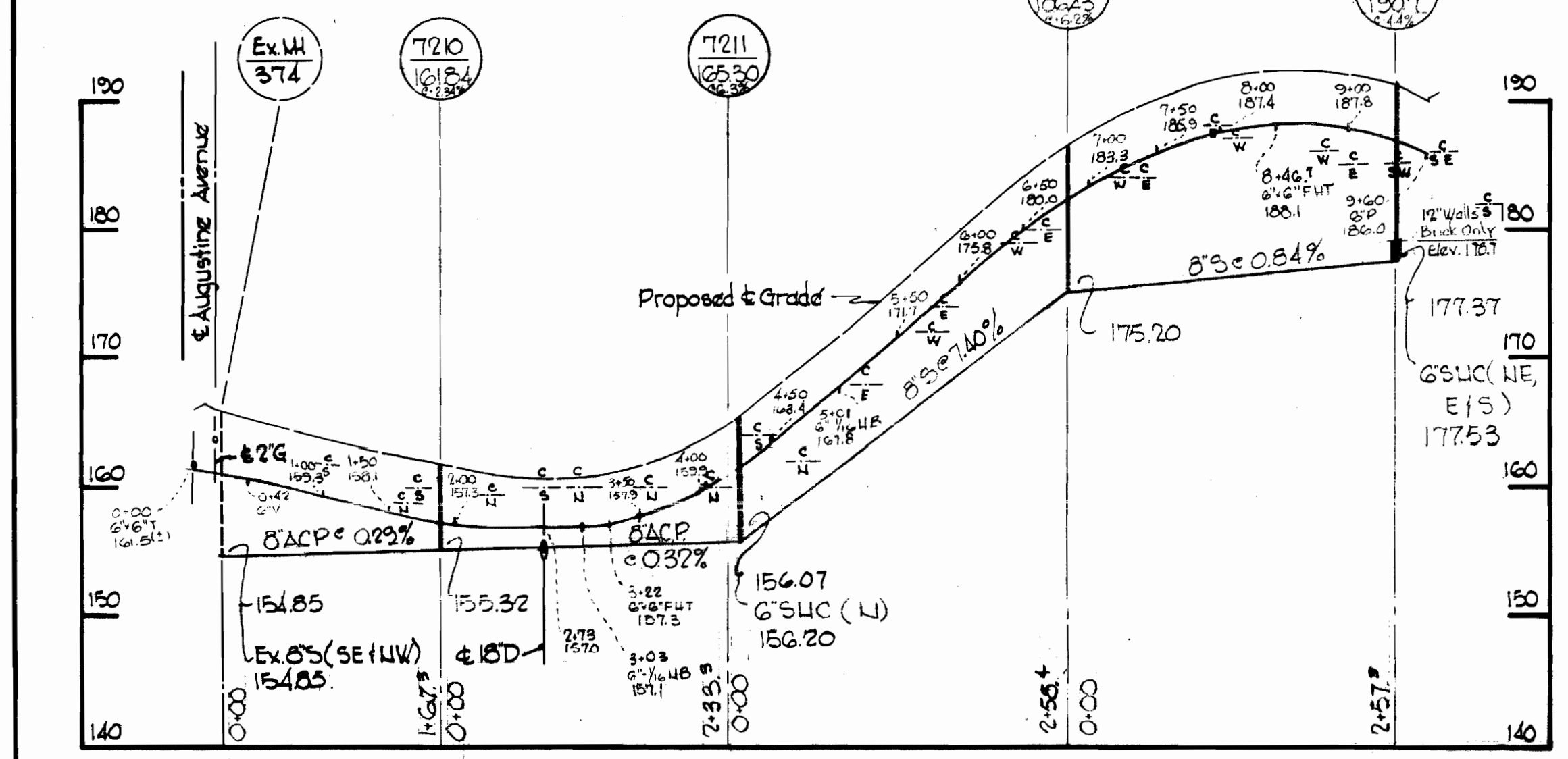
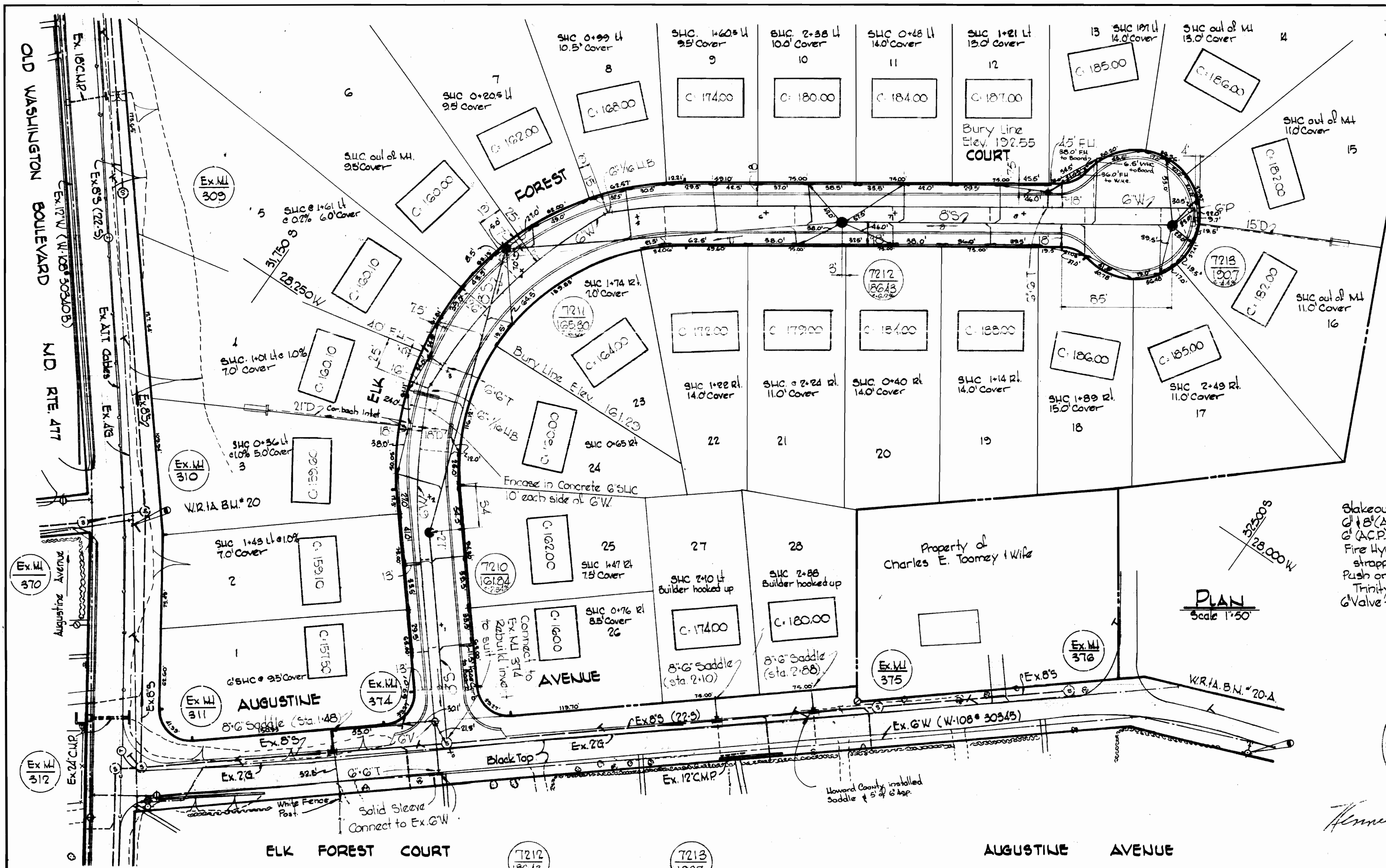
1. Approximate location of existing mains are shown. The Contractor shall take all necessary precautions to protect existing mains and services and maintain uninterrupted supply. Any damage incurred shall be repaired immediately.
2. All pipe elevations shown are invert elevations.
3. The Contractor shall locate existing utilities a minimum of two weeks in advance of construction operations in vicinity of utilities.
4. For all standard details see standards bound in Specifications.
5. Clear all utilities by a minimum of 6'; clear all poles by 2'-0" minimum or tunnel as required.
6. The Contractor shall provide a joint in all sewer mains within 2'-0" of exterior manhole walls.
7. All manholes shall be 4'-0" inside diameter.
8. All water mains to have a minimum of 3 1/2' cover unless otherwise noted.
9. Block all fittings with concrete, see standards bound in Specifications.
10. Bury Line Elevations on fire hydrants shall be set to the elevations shown on the drawings.
11. All fire hydrants shall be strapped to the tee and shall be buttressed with concrete in accordance with standard details.
12. All horizontal and vertical controls are based on Howard County Datum.

Blakeout and Diary F.B. #5707
G & B (A.C.P.) Sewer - Certain Feed
G & B (A.C.P.) Water - Certain Feed
Fire Hydrant - Div. of U.S. Pipe -
strapped and concrete Block
Push on FH Tee & 1/2 Bend -
Trinity Valley
G Valve - M.J. - M.K.H.

PLAN
Scale 1"=50'



Kenneth M. Wood



PROFILES
Horizontal 1"=100'
Vertical 1"=10'

WHITMAN, REQUARDT & ASSOCIATES
ENGINEERS
1304 ST. PAUL ST.
BALTIMORE, MARYLAND

DEPARTMENT OF PUBLIC WORKS
HOWARD COUNTY, MARYLAND
3-8-73
DATE

CONTRACT NO. 516 WBS

PLAN AND PROFILE OF
WATER AND SEWER MAINS

ELECTION DISTRICT
ELKRIDGE NO. 1

DRAWING NO. 1 OF 1
SCALE AS SHOWN

WS 516 -WBS//