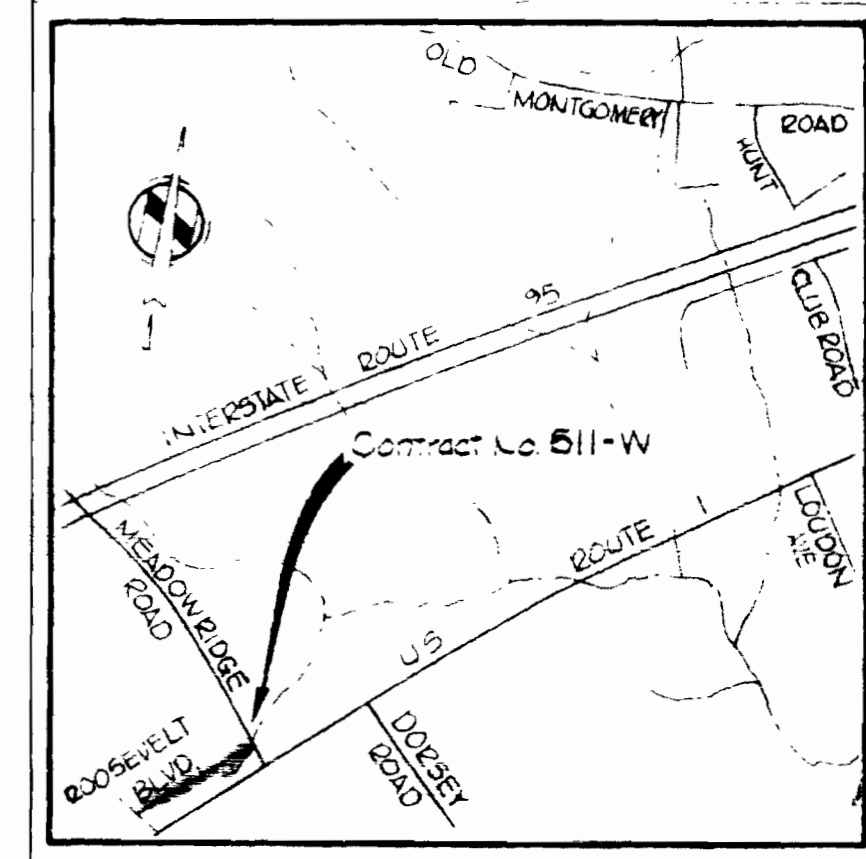


QUANTITIES	
ITEM	QUANTITY
6" Water	1575 L.F.
8" Water	440 L.F.
Fire Hydrants	4

WASHINGTON MANOR PARK

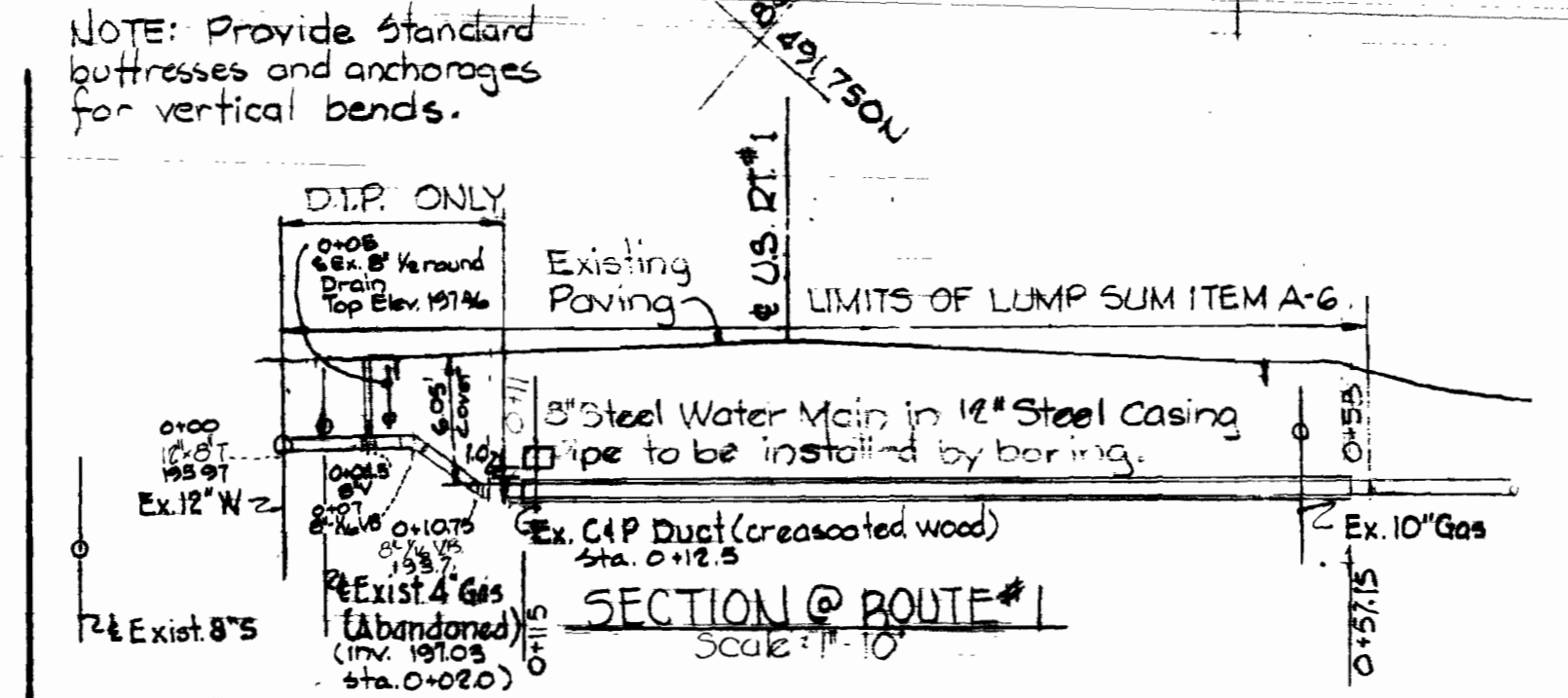
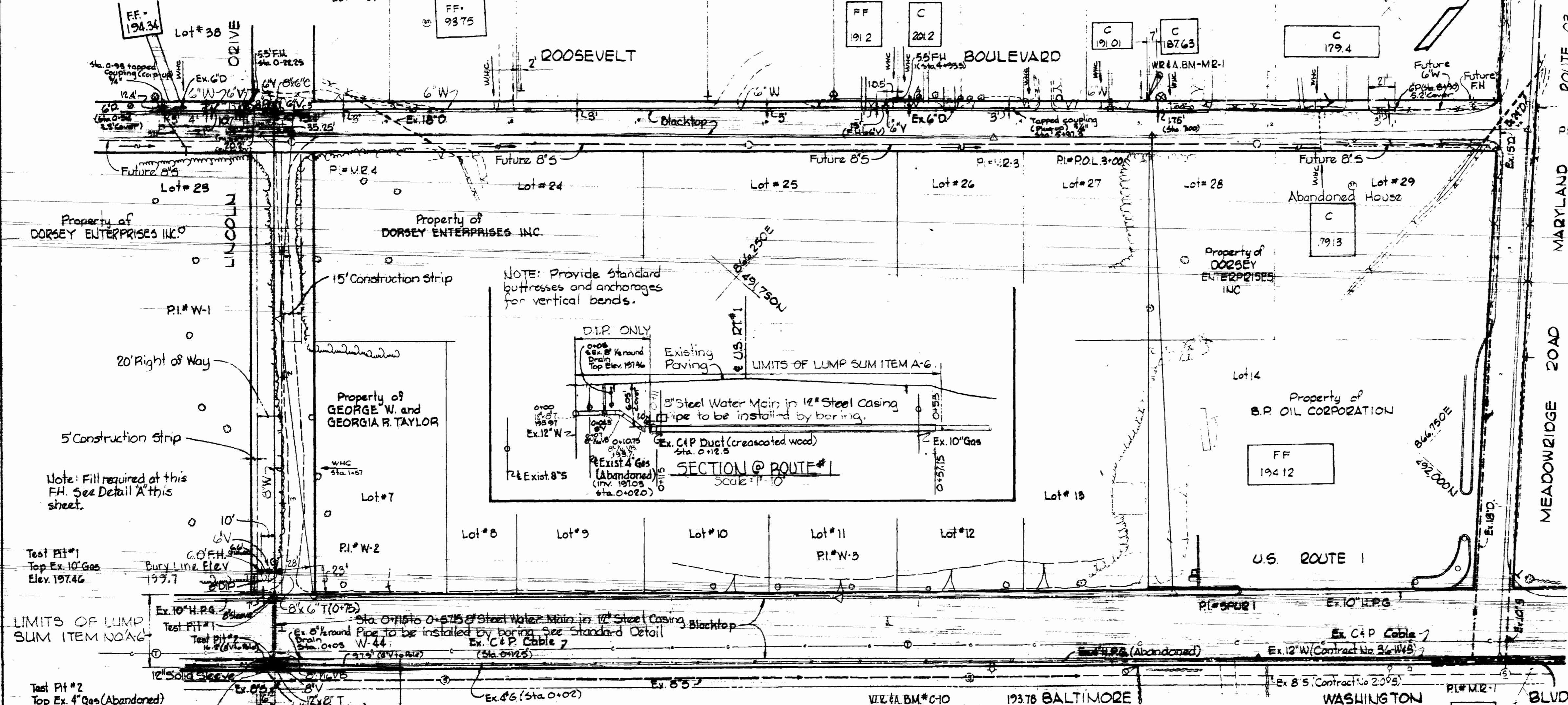
NR 4A BM# M2-1  
22 Spike in G.E. Pole # 212757 on West side  
Roosevelt Blvd. 300' South intersection  
Meadowridge Rd. and Roosevelt Blvd



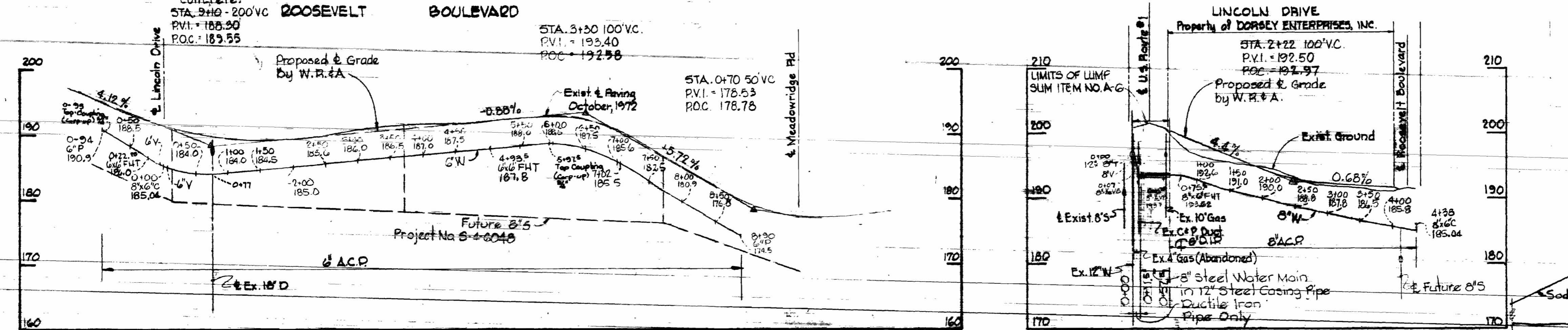
VICINITY MAP  
Scale: 1/2" = 1 Mile

GENERAL NOTES

- Approximate location of existing mains are shown. The Contractor shall take all necessary precautions to protect existing mains and services and maintain uninterrupted supply. Any damage incurred shall be repaired immediately.
- All pipe elevations shown are invert elevations.
- The Contractor shall locate existing utilities a minimum of two weeks in advance of construction operations in vicinity of utilities.
- For all standard details see standards bound in Specifications.
- Clear all utilities by a minimum of 6" clear all poles by 2'-0" minimum or tunnel as required.
- All water mains to have a minimum of 3'-6" cover unless otherwise noted.
- Block all fittings with concrete, see standards bound in Specifications.
- Bury lines elevations on fire hydrants shall be set to road elevations or as directed by the Engineer.
- All fire hydrants shall be strapped and buttressed in accordance with standard details. Soil around the fire hydrants shall be compacted in accordance with Section 5-15 of the Standard Specifications.
- All horizontal and vertical controls are based on Maryland State Datum.
- Trees are to be protected from damage to maximum extent. Trees located within the construction strips are not to be removed or damaged by the Contractor.
- Water services shall be for inside meter settings.
- The Contractor shall notify the following utilities or agencies at least five days before starting work shown on these plans:  
1. State Highway Administration - 531-5535  
2. Baltimore Gas & Electric, Underground Gas & Distribution Engineering - 559-0100  
3. Chesapeake & Potomac Telephone Company - 725-9976



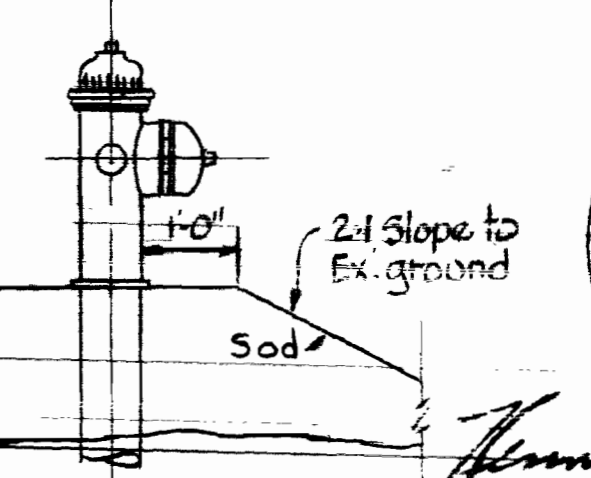
PLAN  
Scale: 1" = 50'



PROFILES  
Scale: Horiz: 1" = 100'  
Vert: 1" = 10'

PROFILE  
Scale: Horiz: 1" = 100'  
Vert: 1" = 10'

DETAIL A  
Scale: 1/2" = 1'-0"



*Handwritten signature: Kenneth M. ...*



WHITMAN, REQUARDT & ASSOCIATES  
ENGINEERS  
1304 ST. PAUL ST.  
BALTIMORE, MARYLAND

DEPARTMENT OF PUBLIC WORKS  
HOWARD COUNTY, MARYLAND  
Director of Public Works: *W. O. ...*  
Chief Bureau of Engineering: *W. O. ...*

CONTRACT NO. 511-W

PLAN AND PROFILE  
OF WATER MAINS

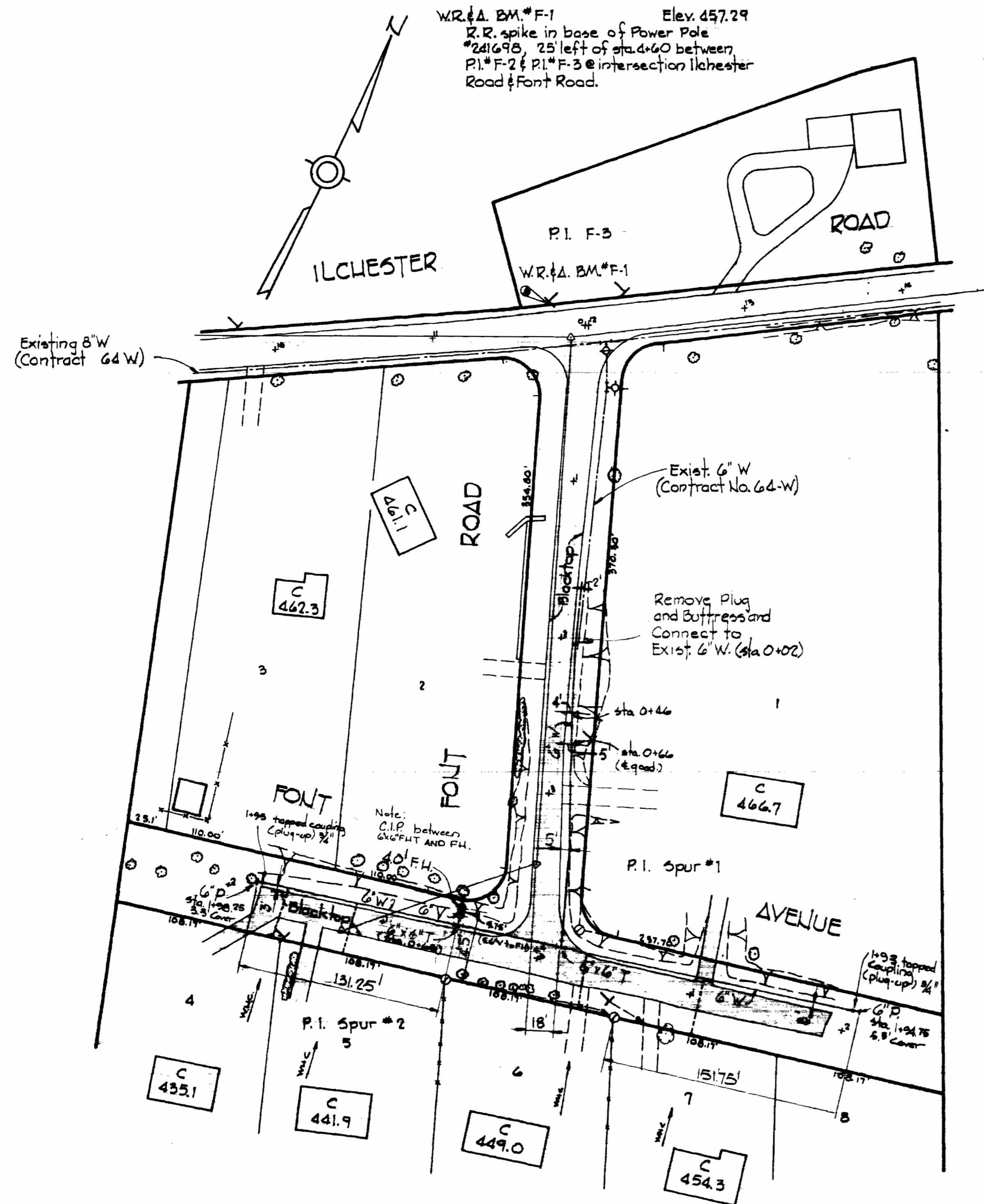
ELECTION DISTRICT  
ELKRIDGE NO. 1

DRAWING NO. 1 OF 2  
SCALE AS SHOWN

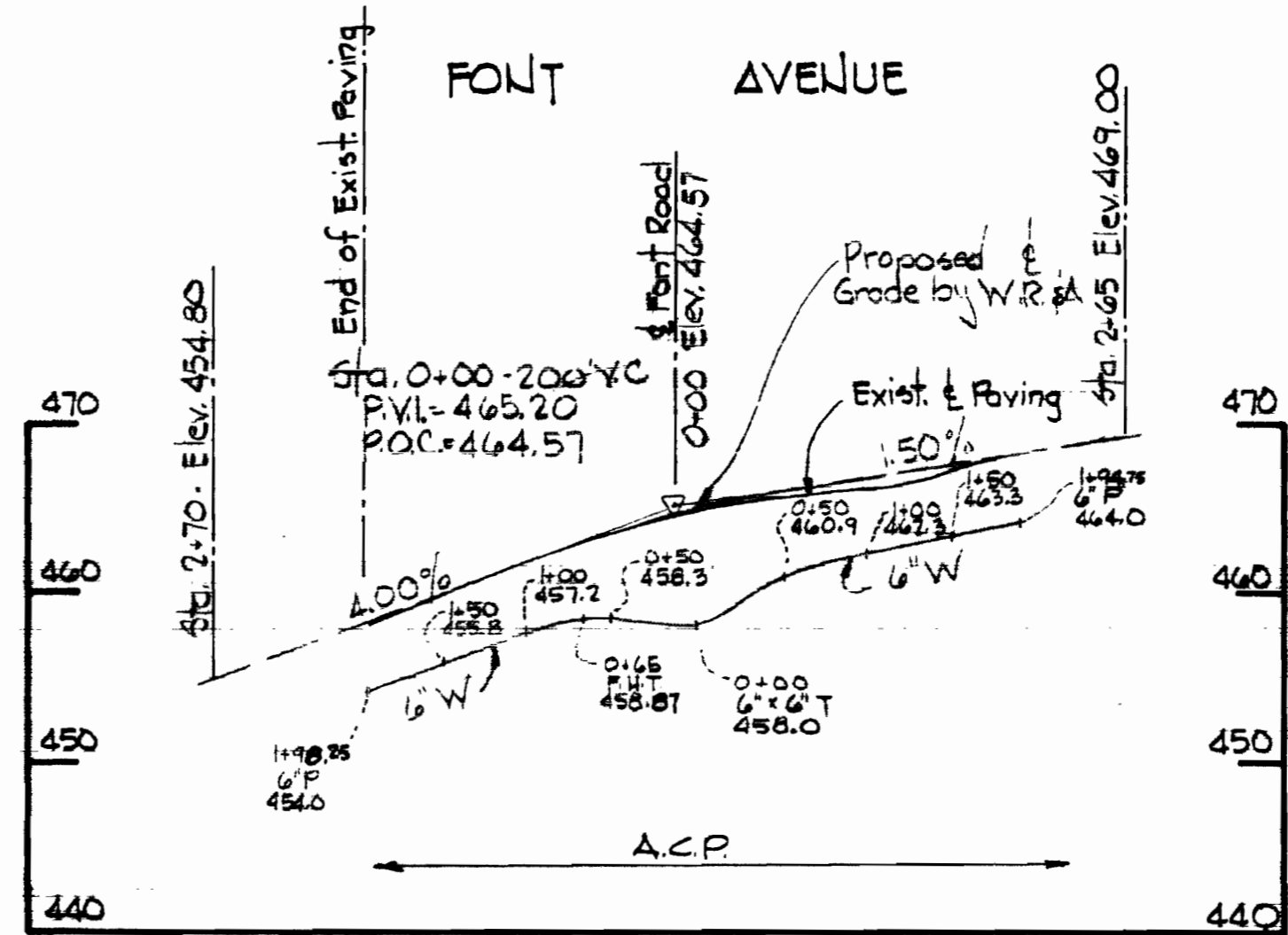
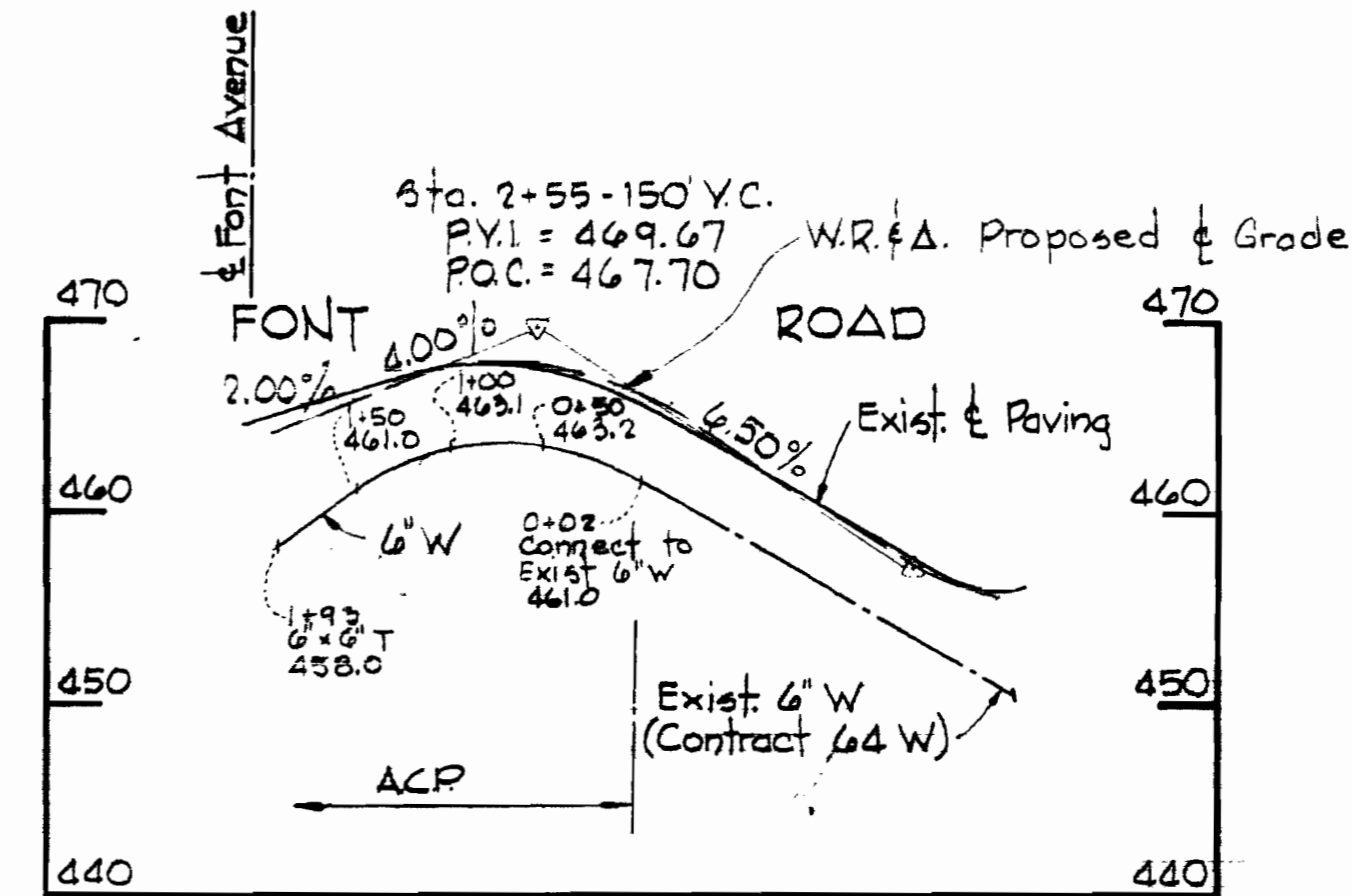
WS 511-W/1

WS 511-W/2

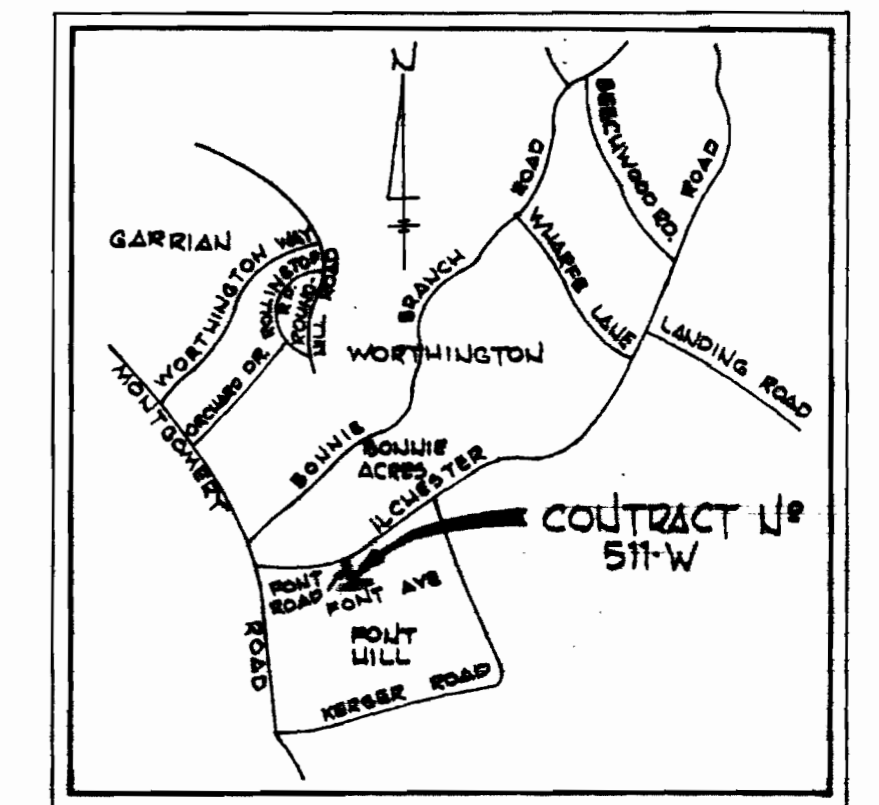
PLANNING 44-510 18382



PLAN  
Scale: 1"=50'



PROFILES  
Scale: Horiz. 1"=100'  
Vert: 1"=10'



VICINITY MAP  
Scale: 1"=1/2 Mile



*Kenneth A. McLeod*

AS BUILT  
 Stakeout and Diary PB 5926  
 6" Water Main - ACP (John Marville)  
 WUC - #8 Copper type 'K'

Font Road  
 Project No. W-4-8047  
 Contract No. 511-W

WHITMAN, REQUARDT & ASSOCIATES ENGINEERS 1304 ST. PAUL ST. BALTIMORE, MARYLAND	DEPARTMENT OF PUBLIC WORKS HOWARD COUNTY, MARYLAND <i>P.J. Ross</i> 6-2-76 DIRECTOR OF PUBLIC WORKS - DATE	CONTRACT NO. 511-W <i>W.O. McLeod</i> 6-2-76 CHIEF-BUREAU OF ENGINEERING - DATE	PLAN AND PROFILE OF WATER MAINS	ELECTION DISTRICT ELKRIDGE No.1	DRAWING NO. 2 OF 2 SCALE AS SHOWN
---	---	---	------------------------------------	------------------------------------	---

W. O. 6936-2

December, 6, 1976 AS BUILT PB#5626