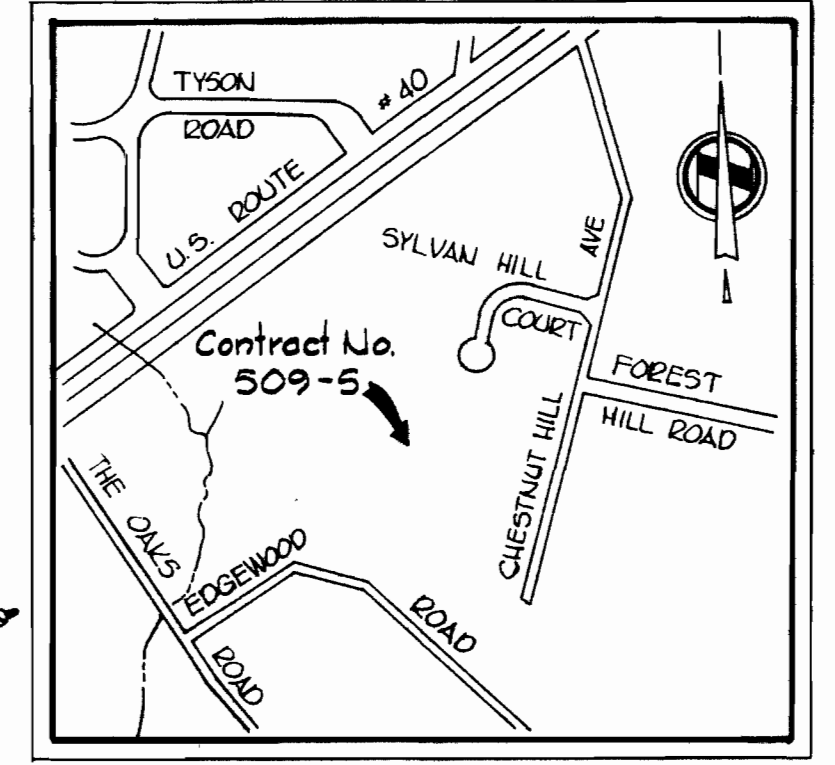
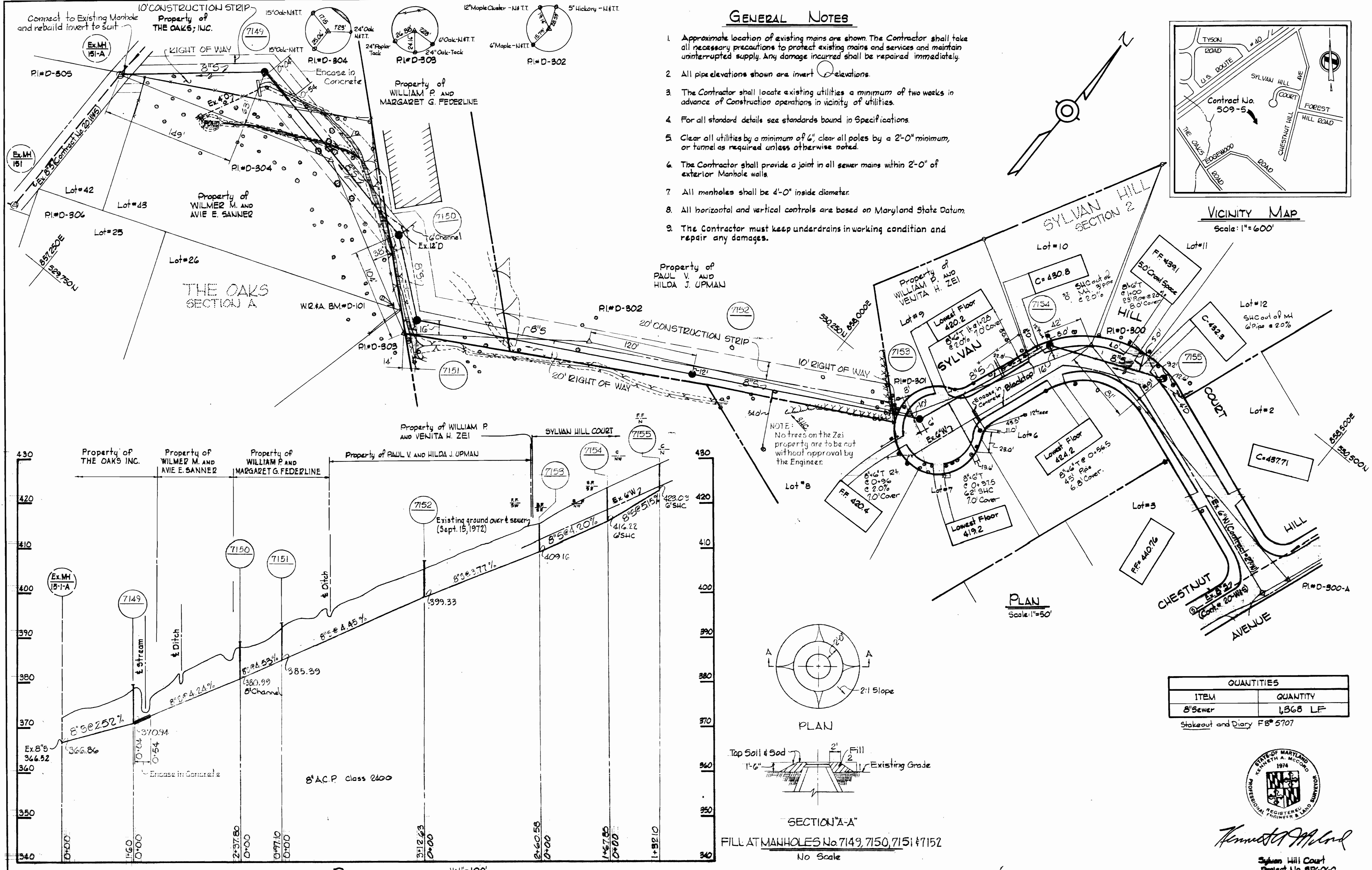


GENERAL NOTES

1. Approximate location of existing mains are shown. The Contractor shall take all necessary precautions to protect existing mains and services and maintain uninterrupted supply. Any damage incurred shall be repaired immediately.
2. All pipe elevations shown are invert elevations.
3. The Contractor shall locate existing utilities a minimum of two weeks in advance of construction operations in vicinity of utilities.
4. For all standard details see standards bound in Specifications.
5. Clear all utilities by a minimum of 6" clear all poles by a 2'-0" minimum, or tunnel as required unless otherwise noted.
6. The Contractor shall provide a joint in all sewer mains within 2'-0" of exterior Manhole walls.
7. All manholes shall be 4'-0" inside diameter.
8. All horizontal and vertical controls are based on Maryland State Datum.
9. The Contractor must keep underdrains in working condition and repair any damages.

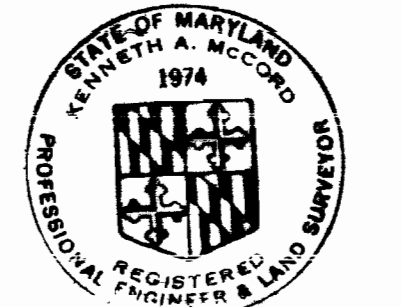


VICINITY MAP
Scale: 1"=600'



QUANTITIES	
ITEM	QUANTITY
8" Sewer	1,868 LF

Stakeout and Diary FB# 5707



Kenneth A. McLeod

Sylvan Hill Court
Project No. 509-5
Contract No. 509-5

WHITMAN, REQUARDT & ASSOCIATES ENGINEERS 1304 ST. PAUL ST. BALTIMORE, MARYLAND	DEPARTMENT OF PUBLIC WORKS HOWARD COUNTY, MARYLAND 8-14-74 DATE <i>W. O. Fellert</i> CHIEF - BUREAU OF WATER AND SEWER	CONTRACT NO. 509-S	PLAN OF SEWER MAINS	ELECTION DISTRICT ELLICOTT CITY NO. 2	DRAWING NO. 1 OF 1	SCALE AS SHOWN
---	---	--------------------	------------------------	--	-----------------------	----------------

WS 509-S/1