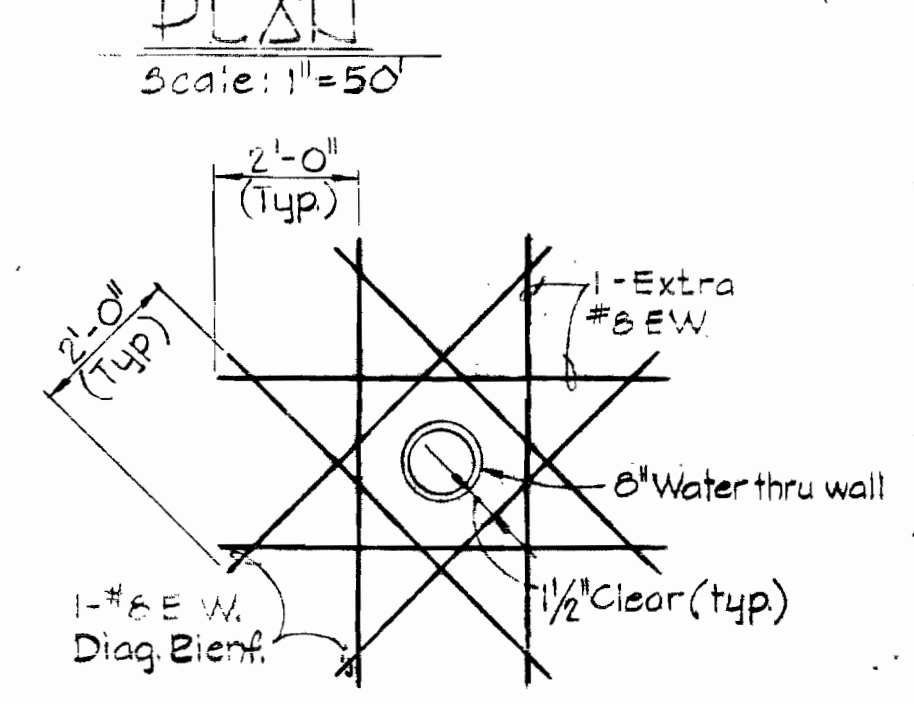
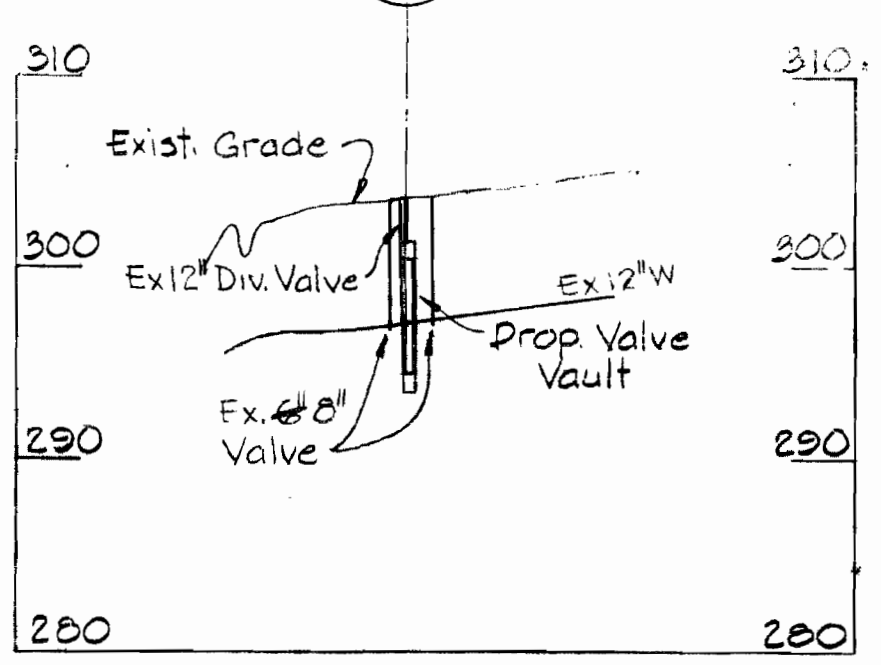
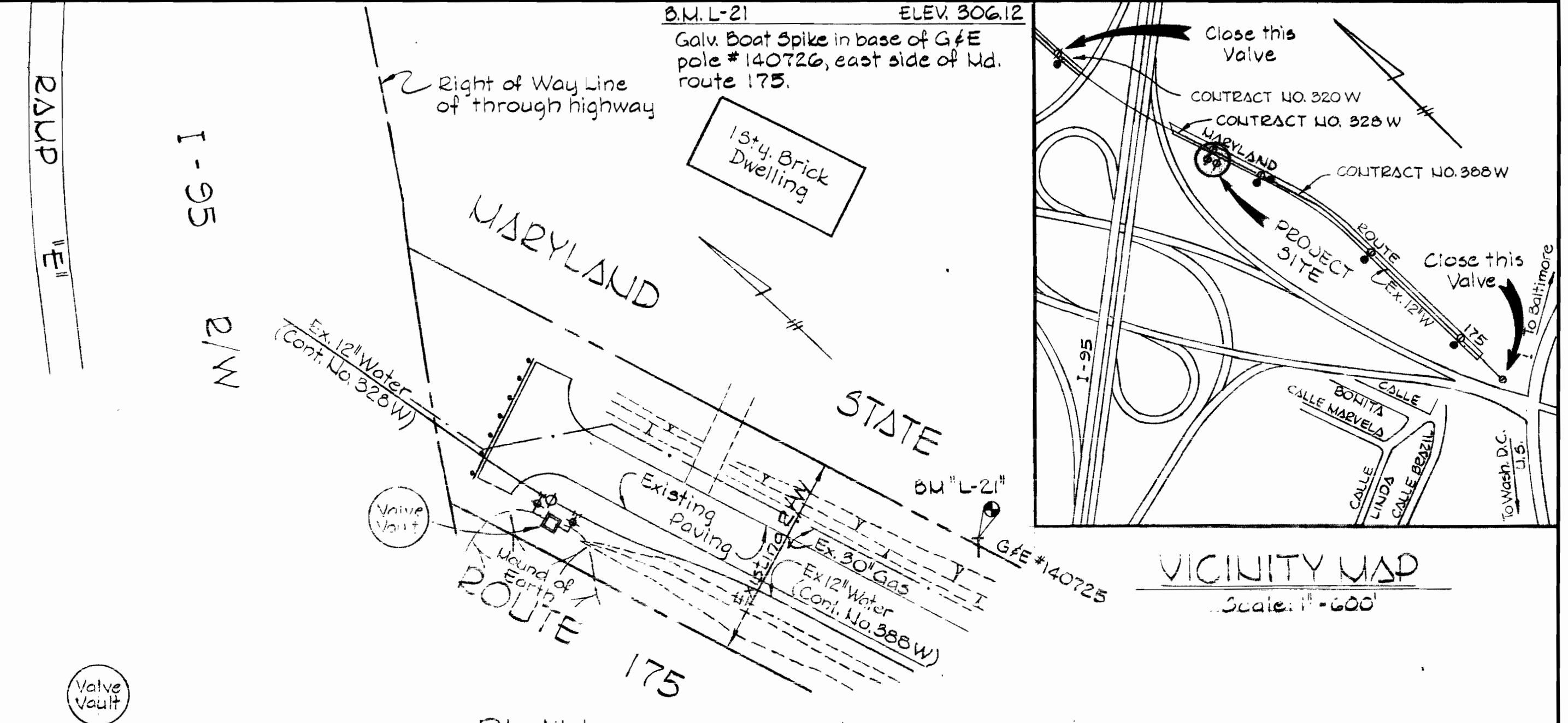
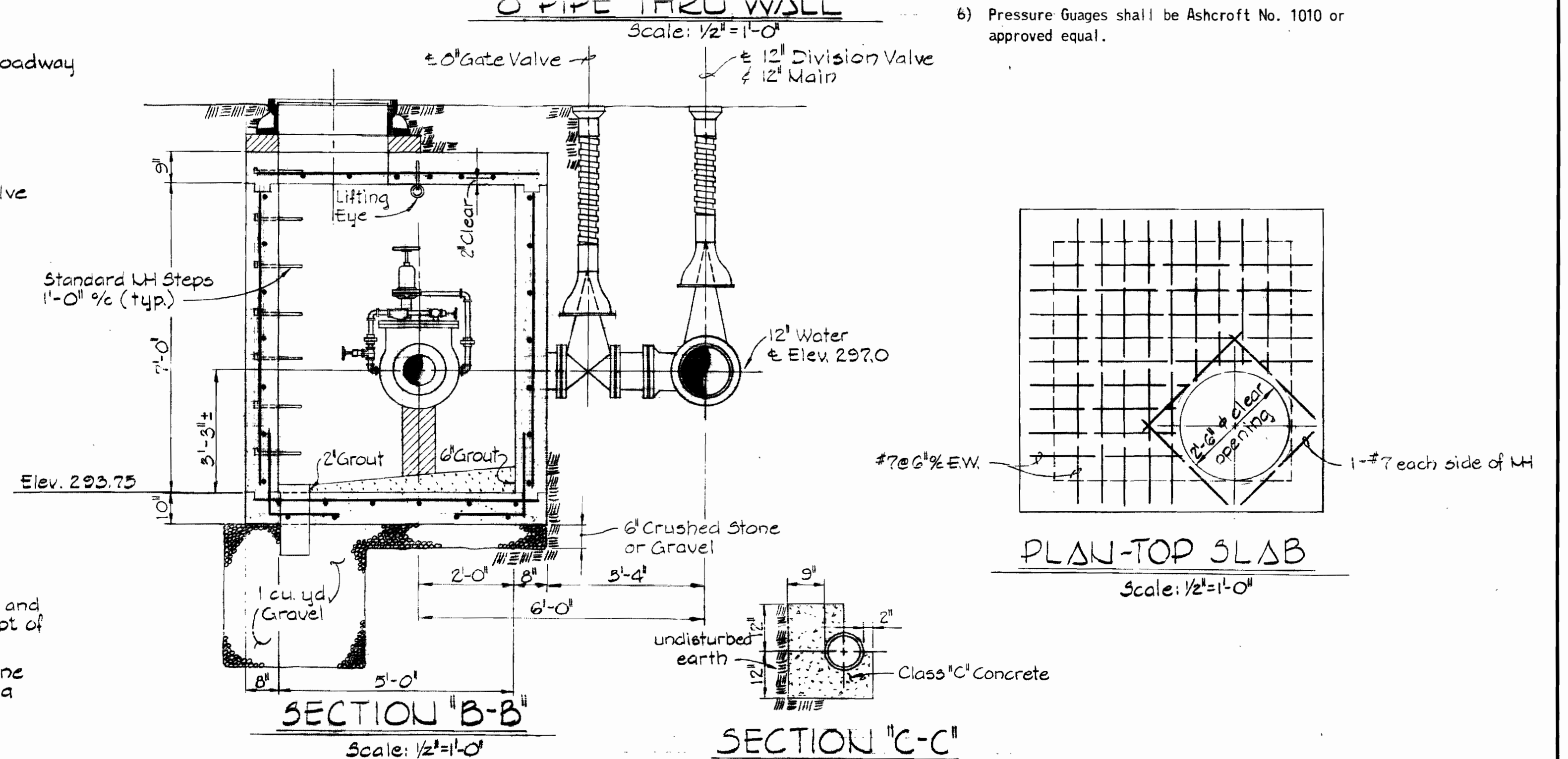
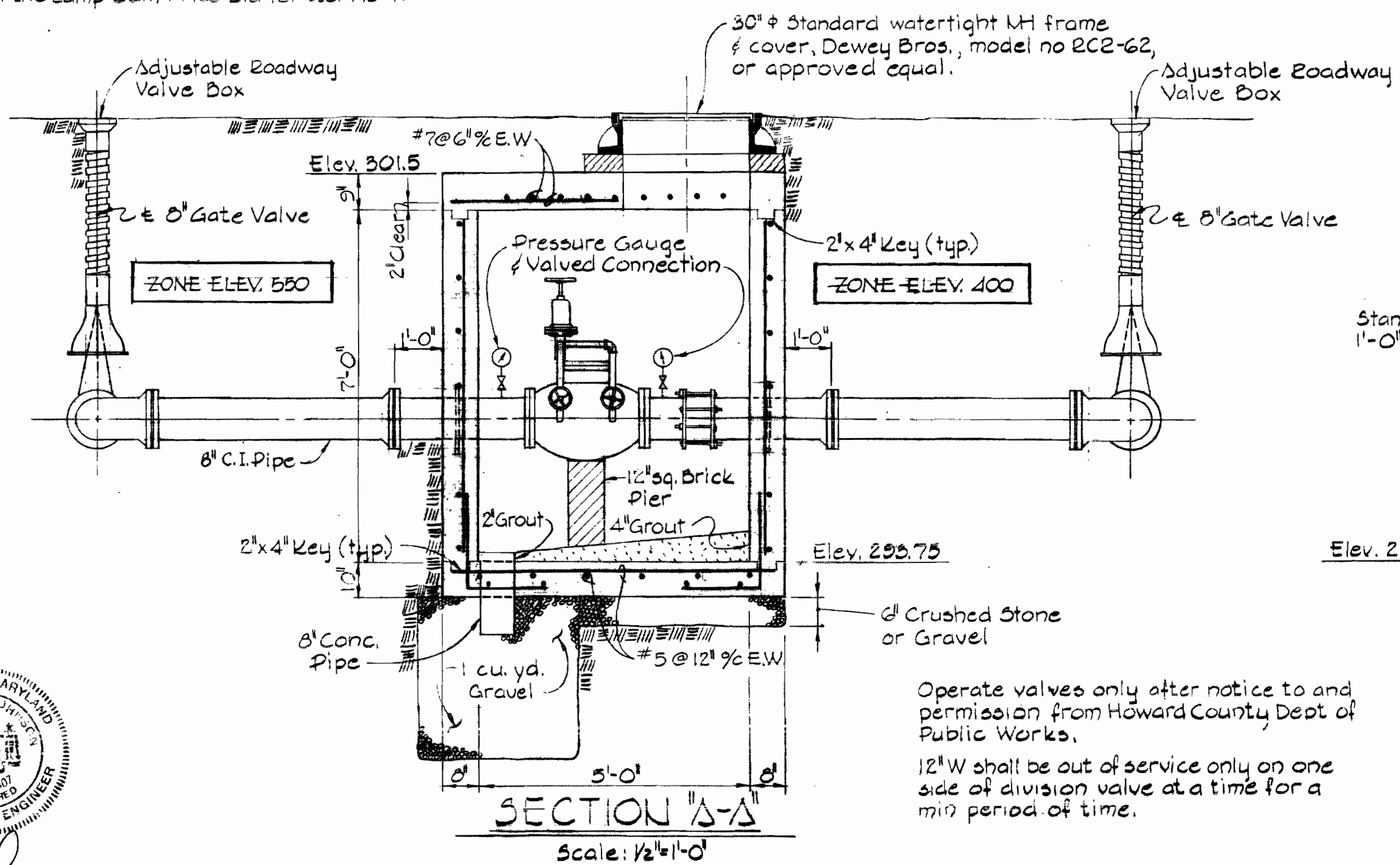


NOTE:
The Contractor will be required to remove the two existing 12"x6" Tees and the two 6 inch Valves and deliver these items to the Howard County Department of Public Works storeyard in the vicinity of Rodgers Avenue and U.S. Route 40. Payment to be included in the Lump Sum Price Bid for Item A-1.

NOTE:
The contractor will be required to set the PR Valve to operate at Elev. 299.370



- GENERAL NOTES**
- 1) All exposed concrete edges shall be chamfered 3/4"
 - 2) Eight inch (8") Golden - Anderson Type 45-D Pressure Reducing Valve will be furnished by the owner to the contractor and installed by the contractor.
 - 3) All concrete shall be Class A.
 - 4) Reinforcing steel shall conform to ASTM A-615-70, Grade 40.
 - 5) Reinforcing bar laps and dowel projections shall be 30 bar diameters unless otherwise noted.
 - 6) Pressure Gauges shall be Ashcroft No. 1010 or approved equal.



STATE OF MARYLAND
BEVERLY W. JOHNSON, REG. NO. 3407
Professional Engineer

PURDUM & JESCHKE
ENGINEERS
1023 N. CALVERT ST.
BALTIMORE, MARYLAND

DEPARTMENT OF PUBLIC WORKS
HOWARD COUNTY, MARYLAND
7-14-72
DATE
W. O. Pilbert
CHIEF - BUREAU OF WATER AND SEWER

CONTRACT NO. 496-DW

DETAILS FOR INSTALLATION OF 8" PRESSURE REDUCING VALVE

ELECTION-DISTRICT
ELK RIDGE NO. 1

DRAWING NO. 1 OF 1

SCALE AS SHOWN

WS 496 W/1