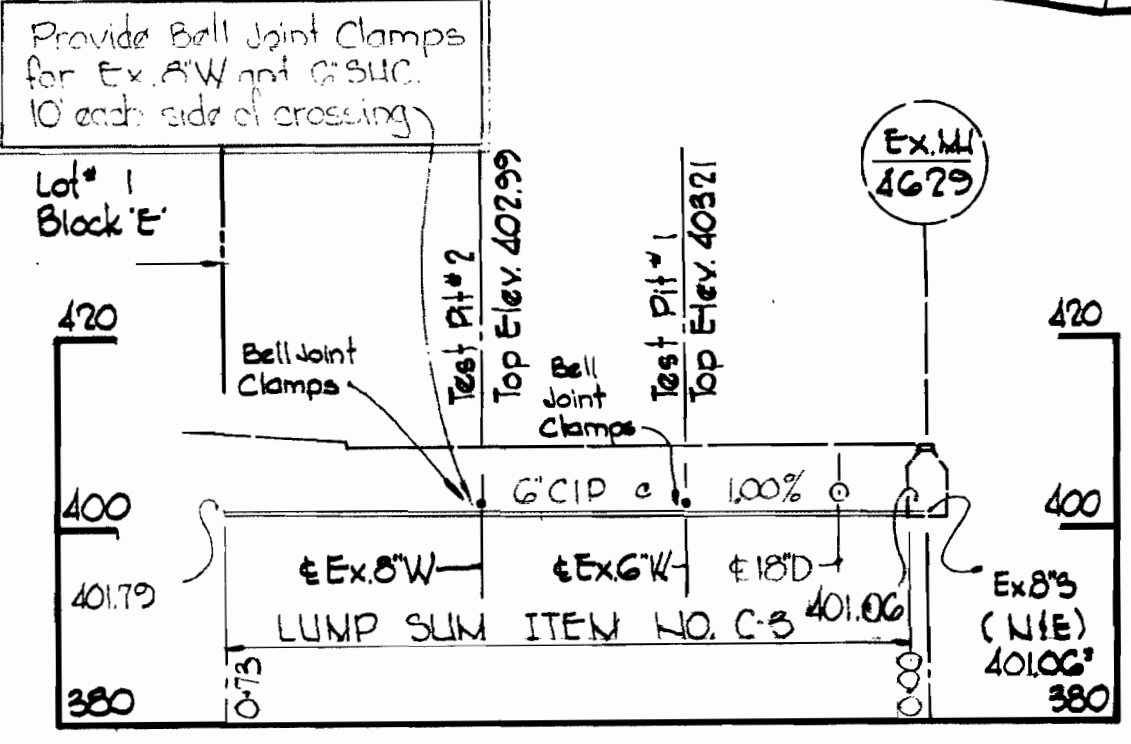


VICINITY MAP
Scale: 1" = 2,000'

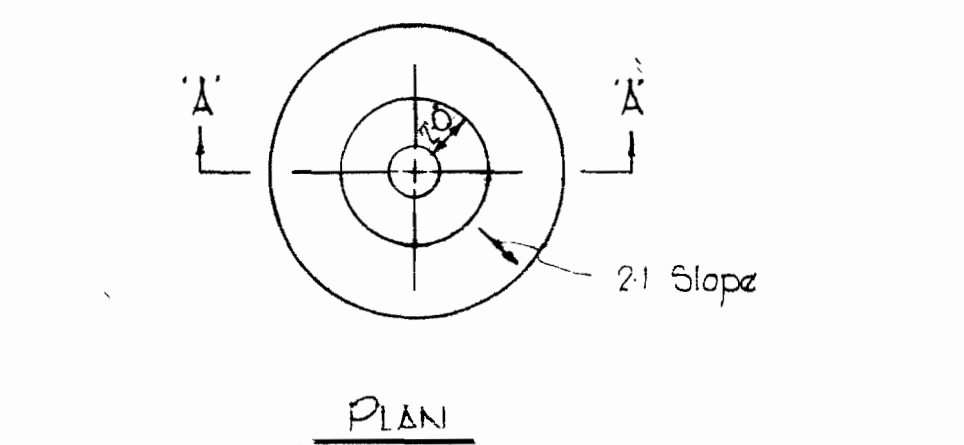
GENERAL NOTES

1. Approximate location of existing mains are shown. The Contractor shall take all necessary precautions to protect existing mains and services and maintain uninterrupted supply. Any damage incurred shall be repaired immediately.
2. All pipe elevations shown are invert elevations.
3. The Contractor shall locate existing utilities a minimum of two weeks in advance of construction operations in vicinity of utilities.
4. For all standard details see standards bound in Specifications.
5. Clear all utilities by a minimum of 6'; clear all poles by 2'-0" minimum or tunnel as required.
6. All fire hydrants shall be strapped to the tee and shall be buttressed with concrete in accordance with standard detail.
7. The Contractor shall provide a joint in all sewer mains within 2'-0" of exterior manhole walls.
8. All manholes shall be 4'-0" inside diameter.
9. All water mains to have a minimum of 3/2' cover unless otherwise noted.
10. Block all fittings with concrete, see standards bound in Specifications.
11. Bury Line elevations on fire hydrants shall be set to the elevations shown on the drawings.
12. All horizontal controls are based on Maryland State Datum.
13. All vertical controls are based on Howard County Datum.

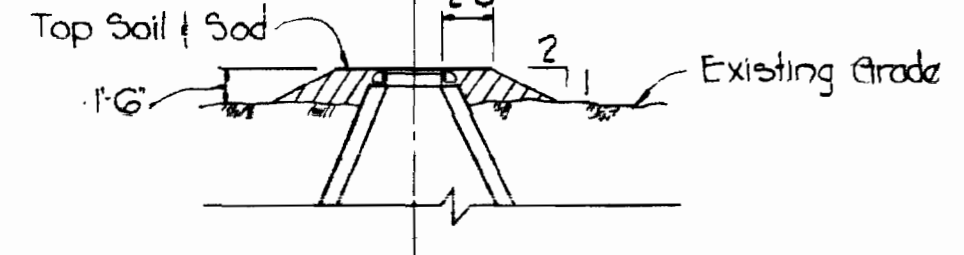
QUANTITIES	
8" Sewer	740'
8" Water	140'
6" Water	1,360'
Fire Hydrants	3



Scale: 1" = 20' H&V.



PLAN



SECTION 'A-A'

FILL AT MANHOLES
Nos. 7199 and 7203
Scale 1/8" = 1'-0"

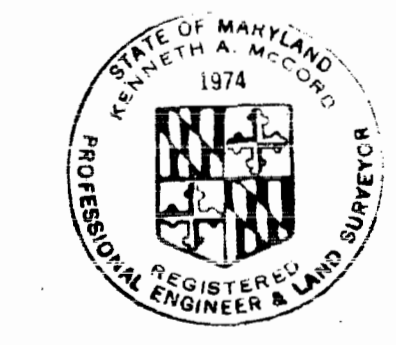
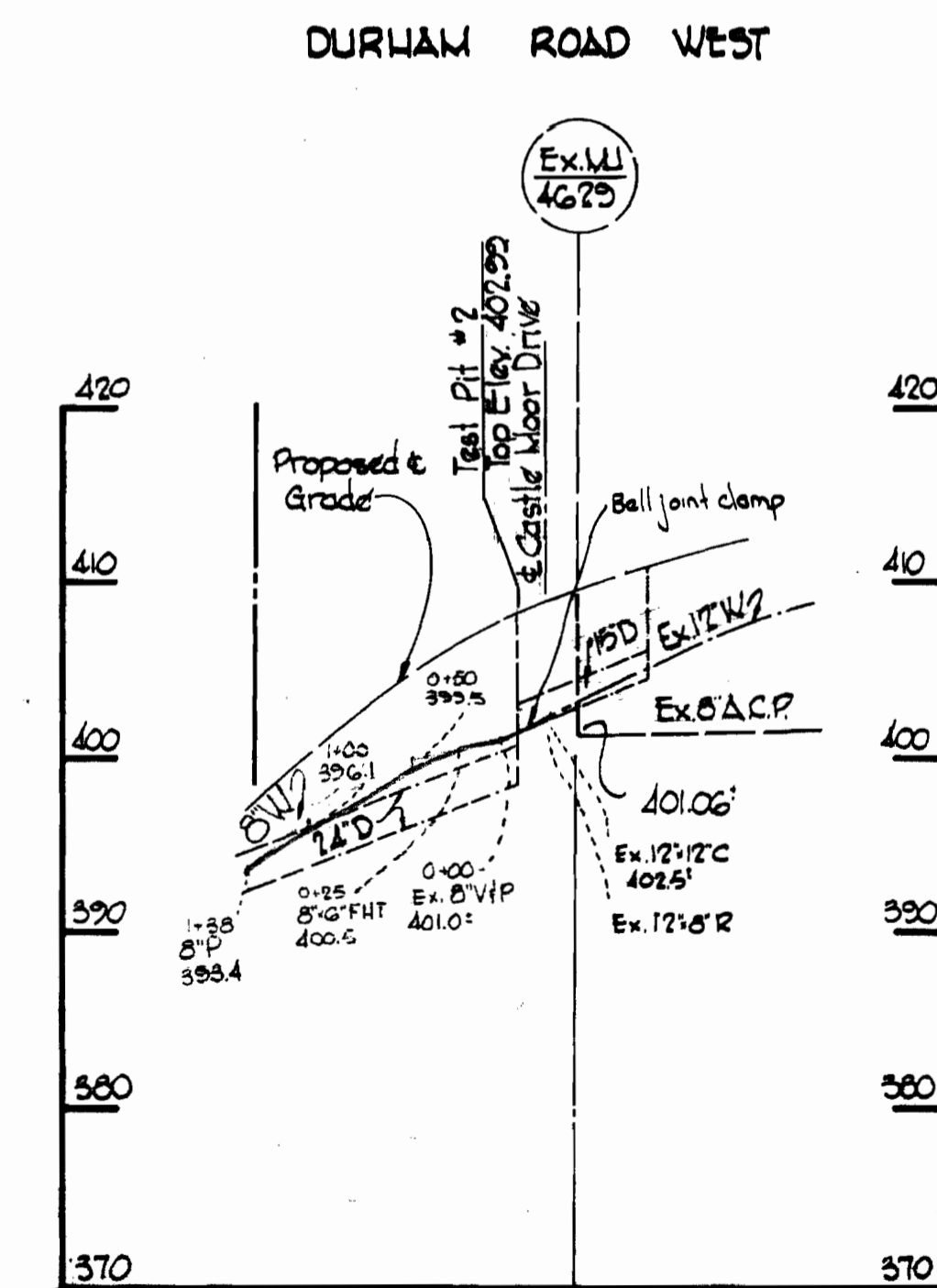
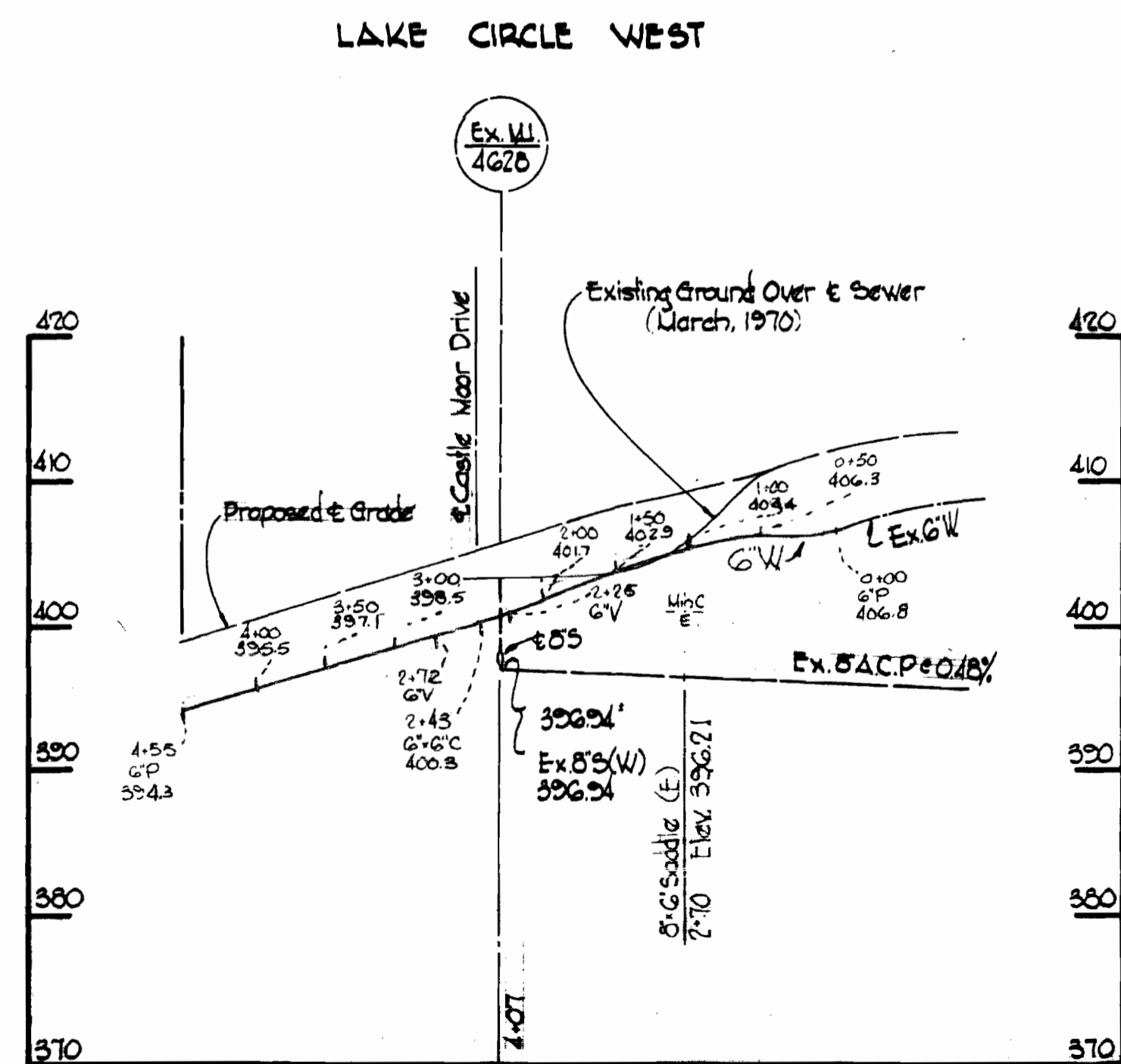
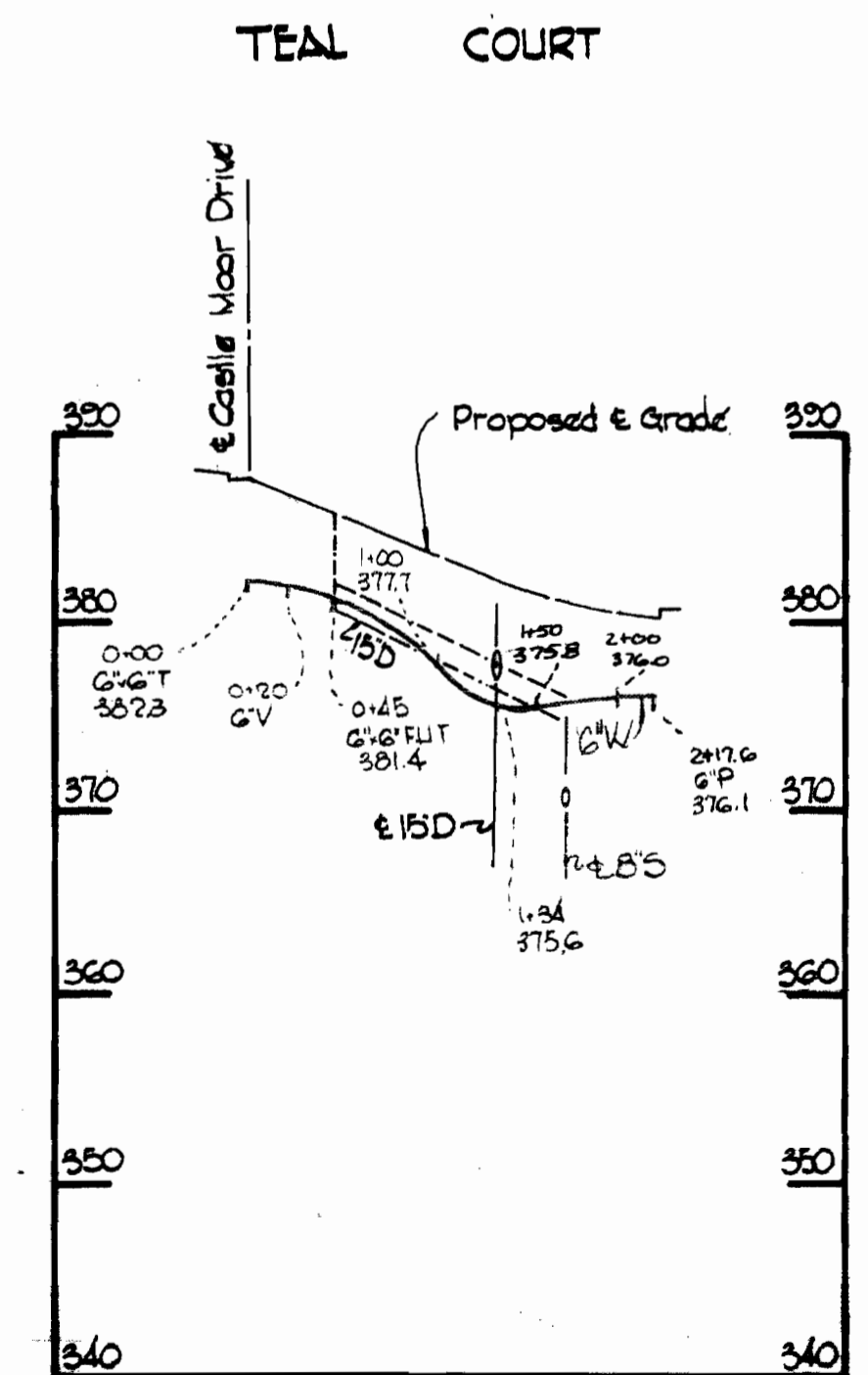
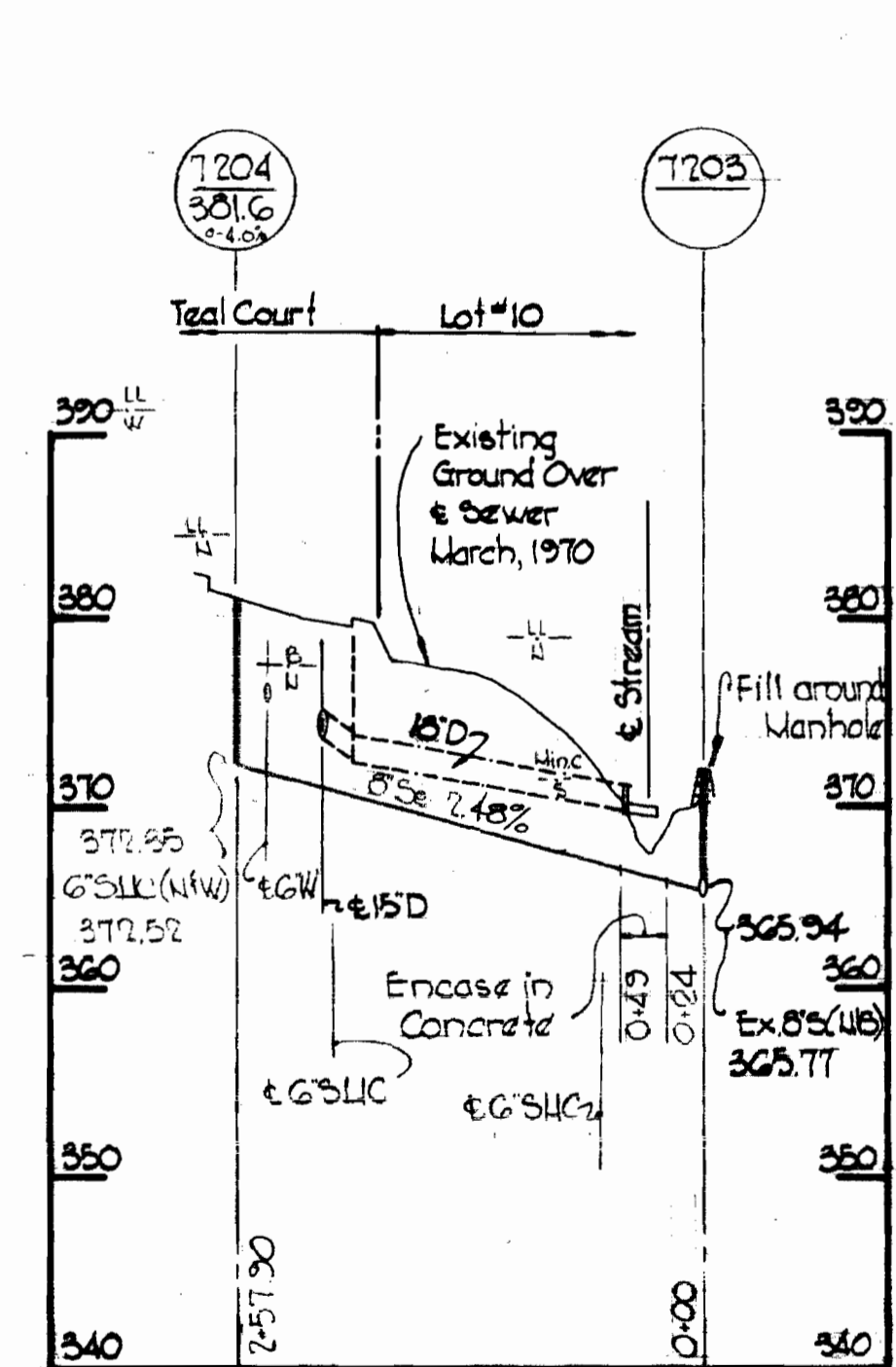
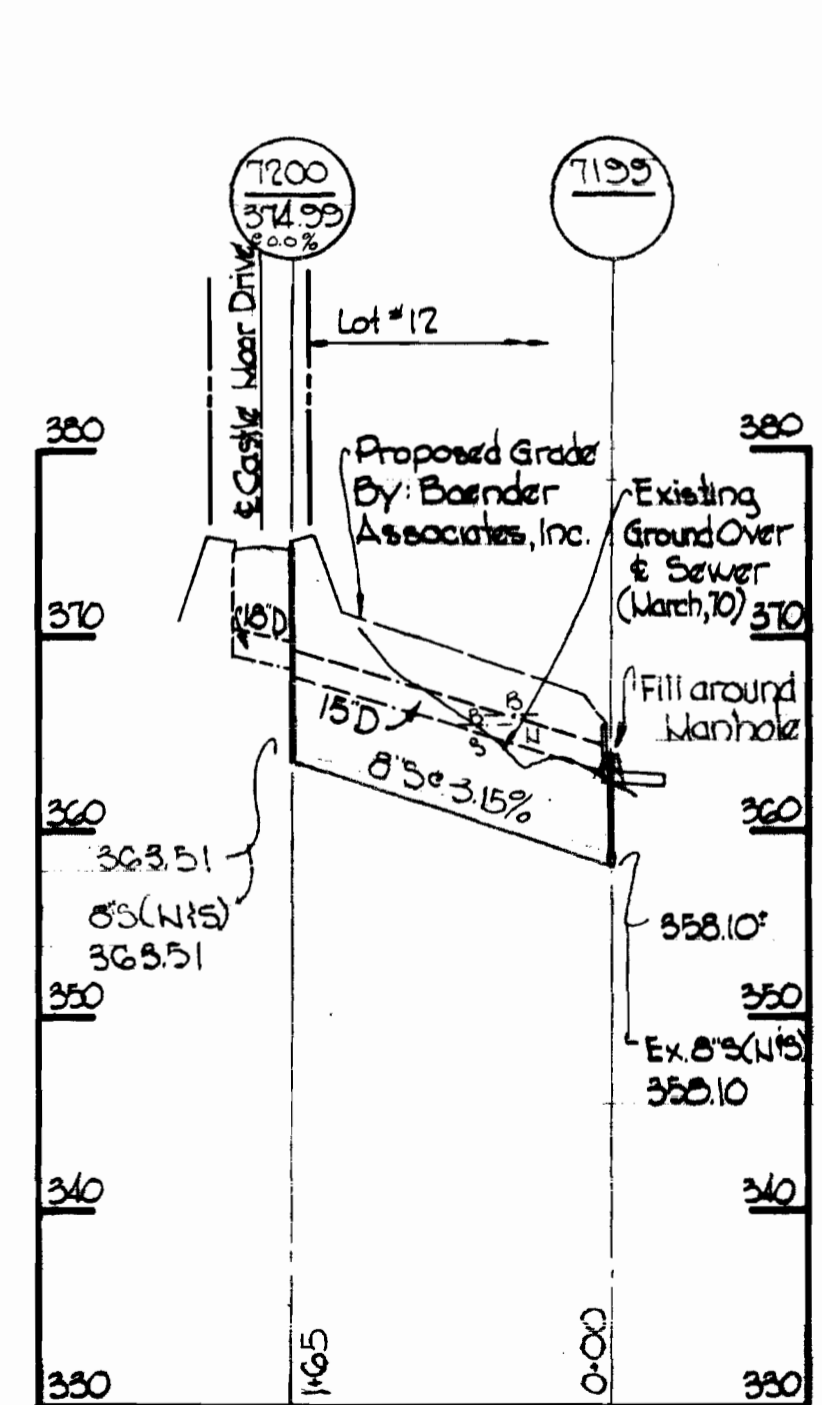
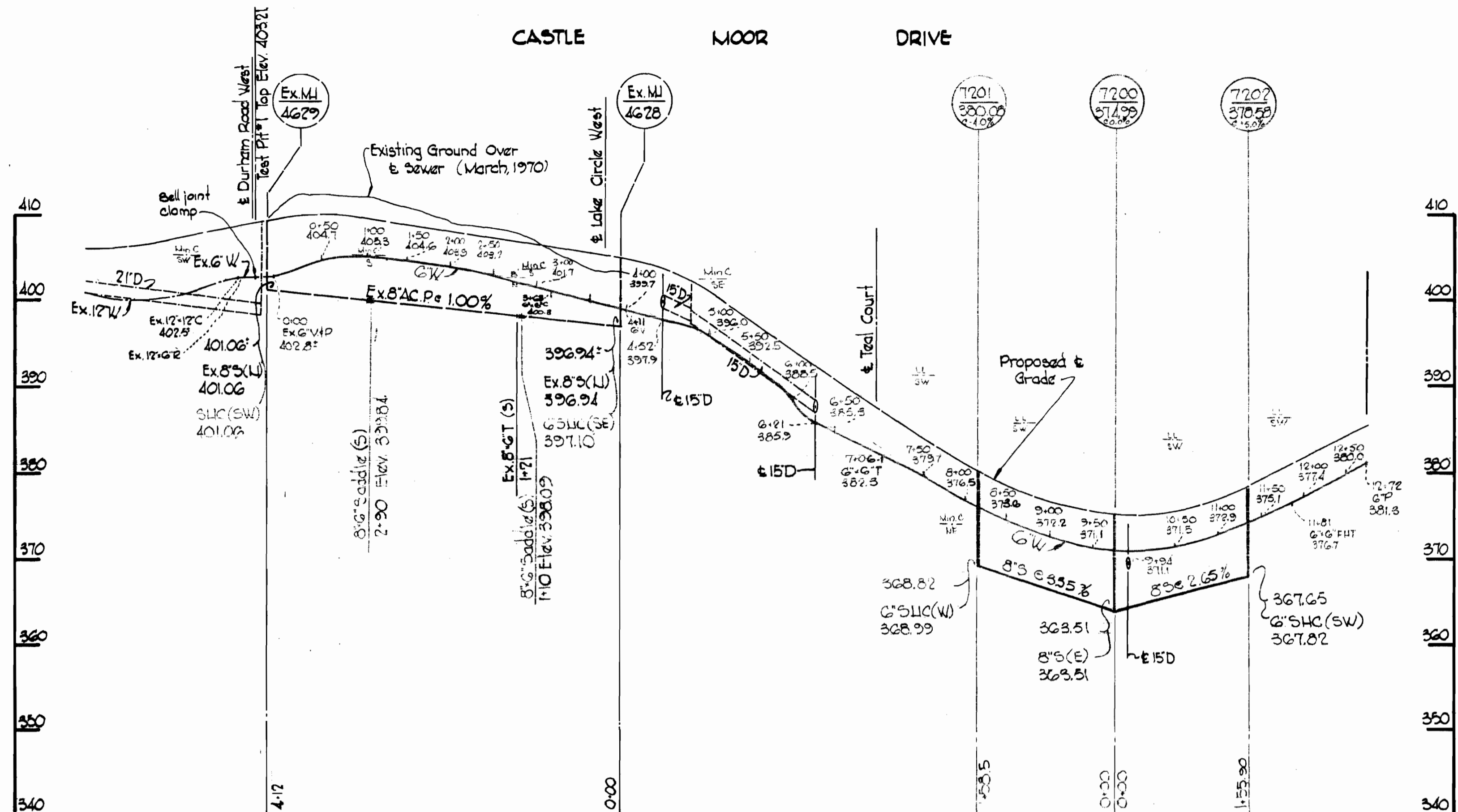
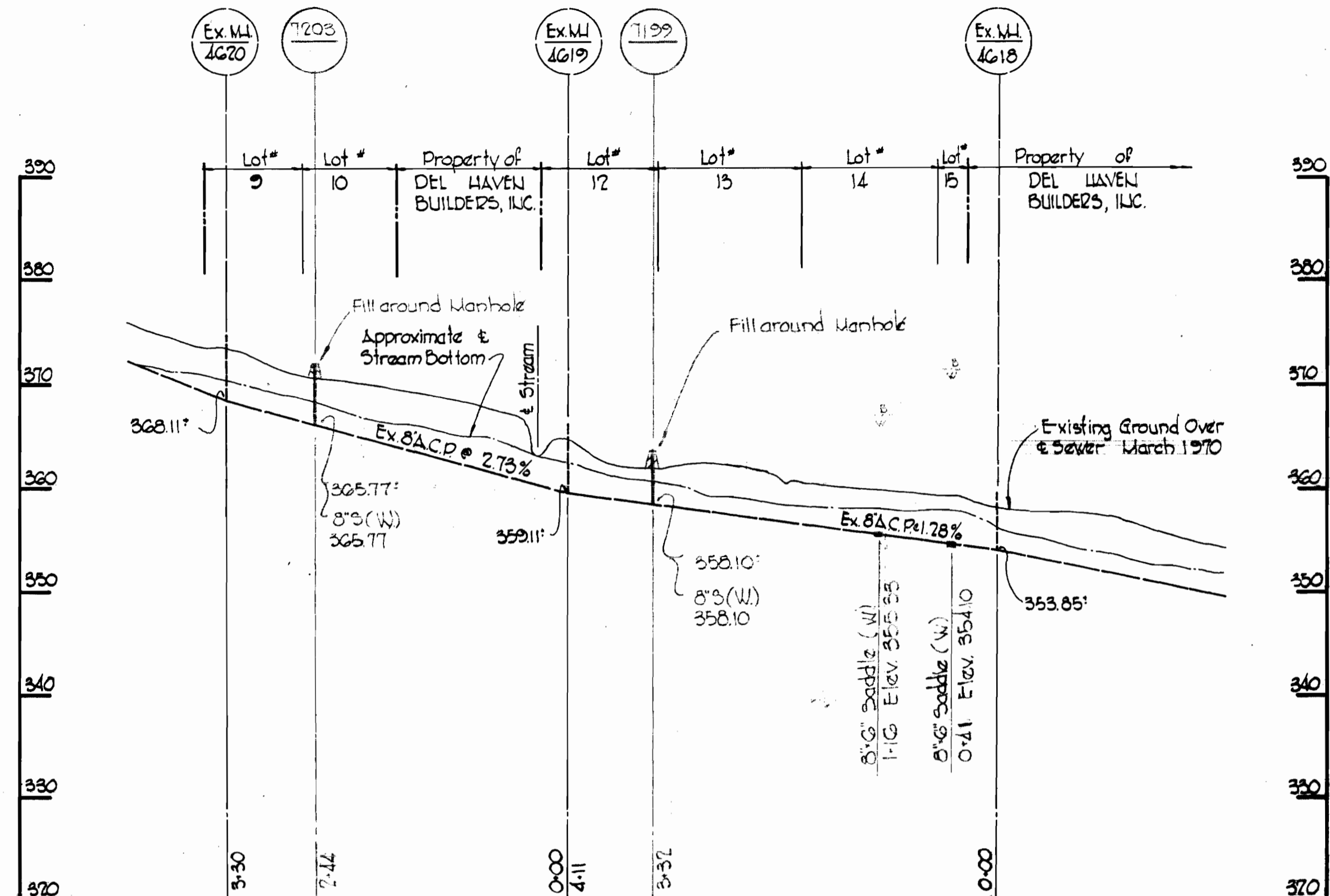
STAKEOUT / DIARY
FB# 5365

PLAN
Scale 1" = 50'



Castle Moor Drive
Beaverbrook Section 8
Contract No. 495 W/S

<p>WHITMAN, REQUARDT & ASSOCIATES ENGINEERS 1304 ST. PAUL ST. BALTIMORE, MARYLAND</p>	<p>DEPARTMENT OF PUBLIC WORKS HOWARD COUNTY, MARYLAND 2-8-73 DATE</p> <p><i>W. O. Gora</i> CHIEF - BUREAU OF WATER AND SEWER</p>	<p>CONTRACT NO. 495 W/S</p>	<p>PLAN & DETAILS OF WATER & SEWER MAINS</p>	<p>BEAVERBROOK ELECTION DISTRICT CLARKSVILLE NO. 5</p>	<p>DRAWING NO. 1 OF 2</p>	<p>SCALE AS SHOWN</p>
--	---	------------------------------------	---	---	----------------------------------	------------------------------



Kenneth M. Lord

ALL WATER - CAST IRON
ALL SEWER - A.C.P. CLASS 2400

Castle Moor Drive
Beaverbrook - Section B
Contract No. 495W/15

<p>WHITMAN, REQUARDT & ASSOCIATES ENGINEERS 1304 ST. PAUL ST. BALTIMORE, MARYLAND</p>	<p>DEPARTMENT OF PUBLIC WORKS HOWARD COUNTY, MARYLAND 3-8-73 DATE</p> <p><i>W. O. Palmd</i> CHIEF - BUREAU OF WATER AND SEWER</p>	<p>CONTRACT NO. 495 W8S</p>	<p>PROFILES OF WATER & SEWER MAINS</p>	<p>BEAVERBROOK ELECTION DISTRICT CLARKSVILLE NO.5</p>	<p>DRAWING NO. 2 OF 2</p> <p>SCALE H-1/100' V-1/10'</p>
--	--	------------------------------------	---	--	---