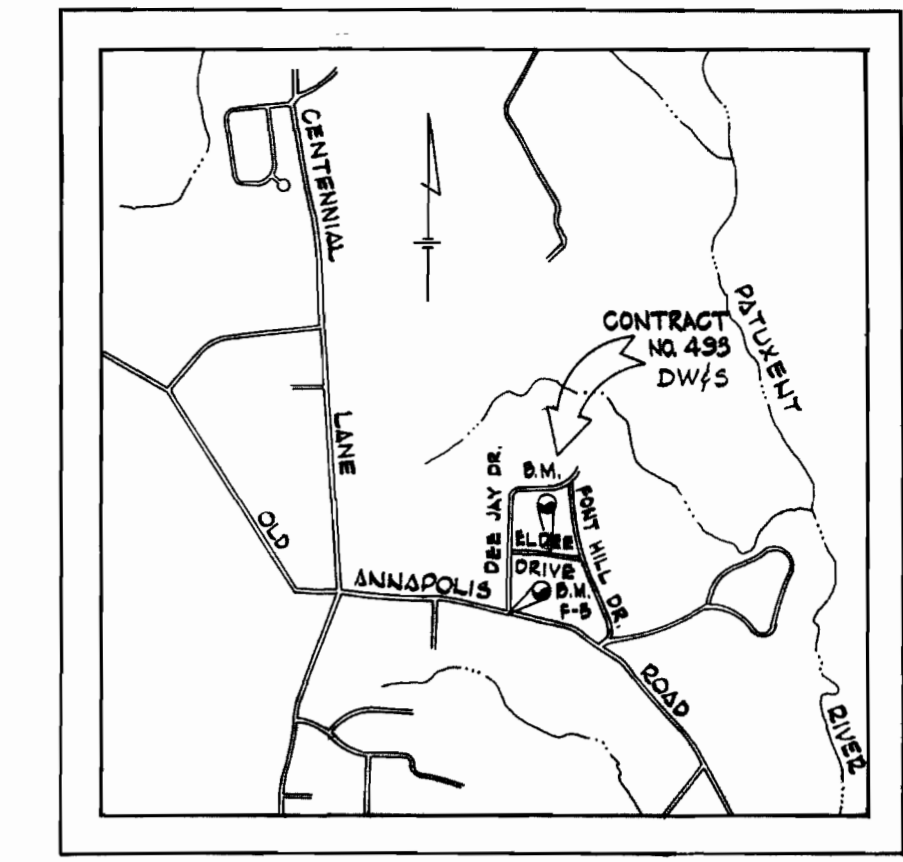


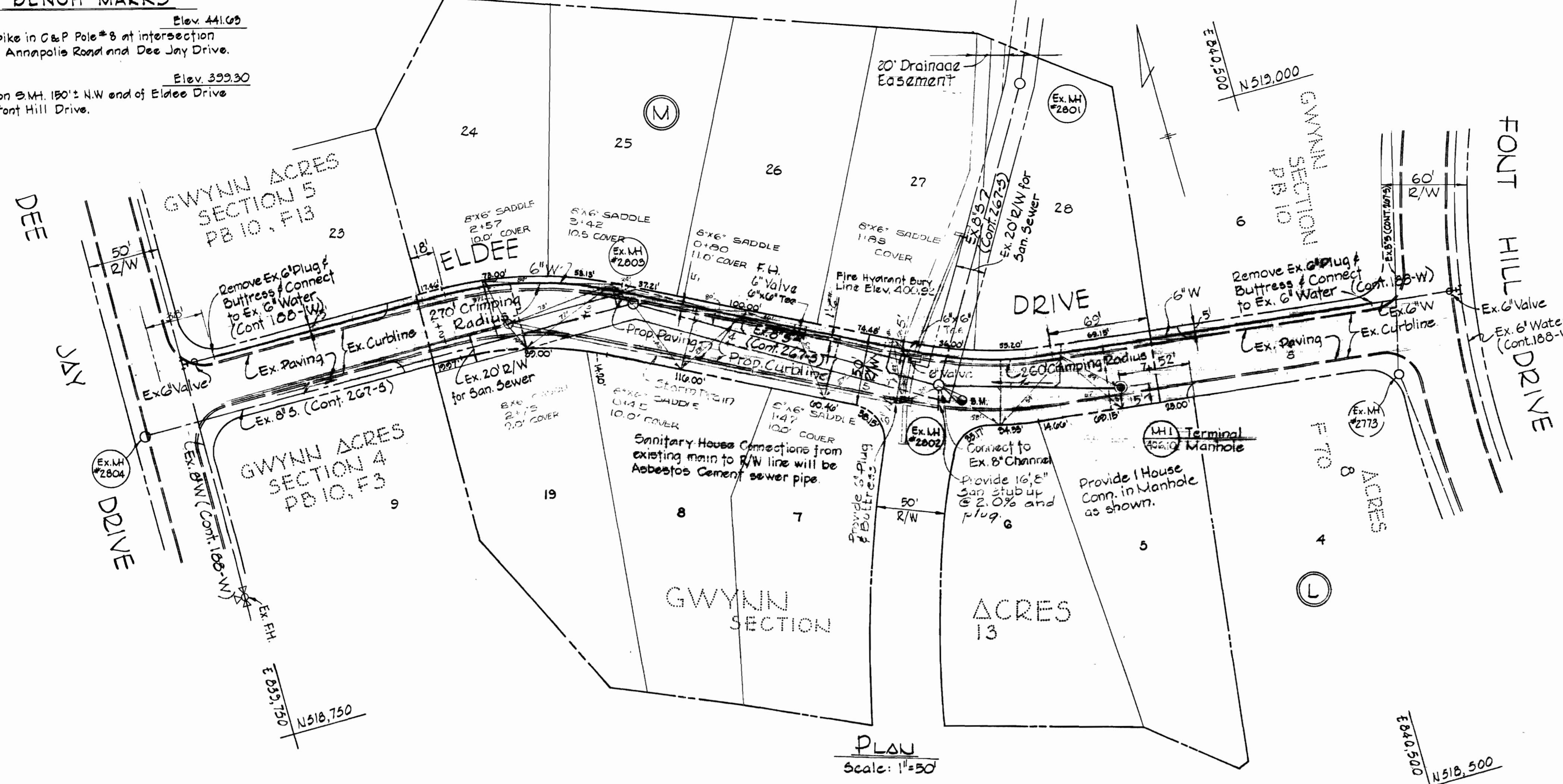
BENCH MARKS

B.M. F-5 Elev. 441.09
 R.R. Spike in C&P Pole #8 at intersection
 of Old Annapolis Road and Dee Jay Drive.

B.M. Elev. 399.30
 T out on S.M. 180± N.W. end of Eldee Drive
 from Font Hill Drive.



VICINITY MAP
 Scale: 1"=200'

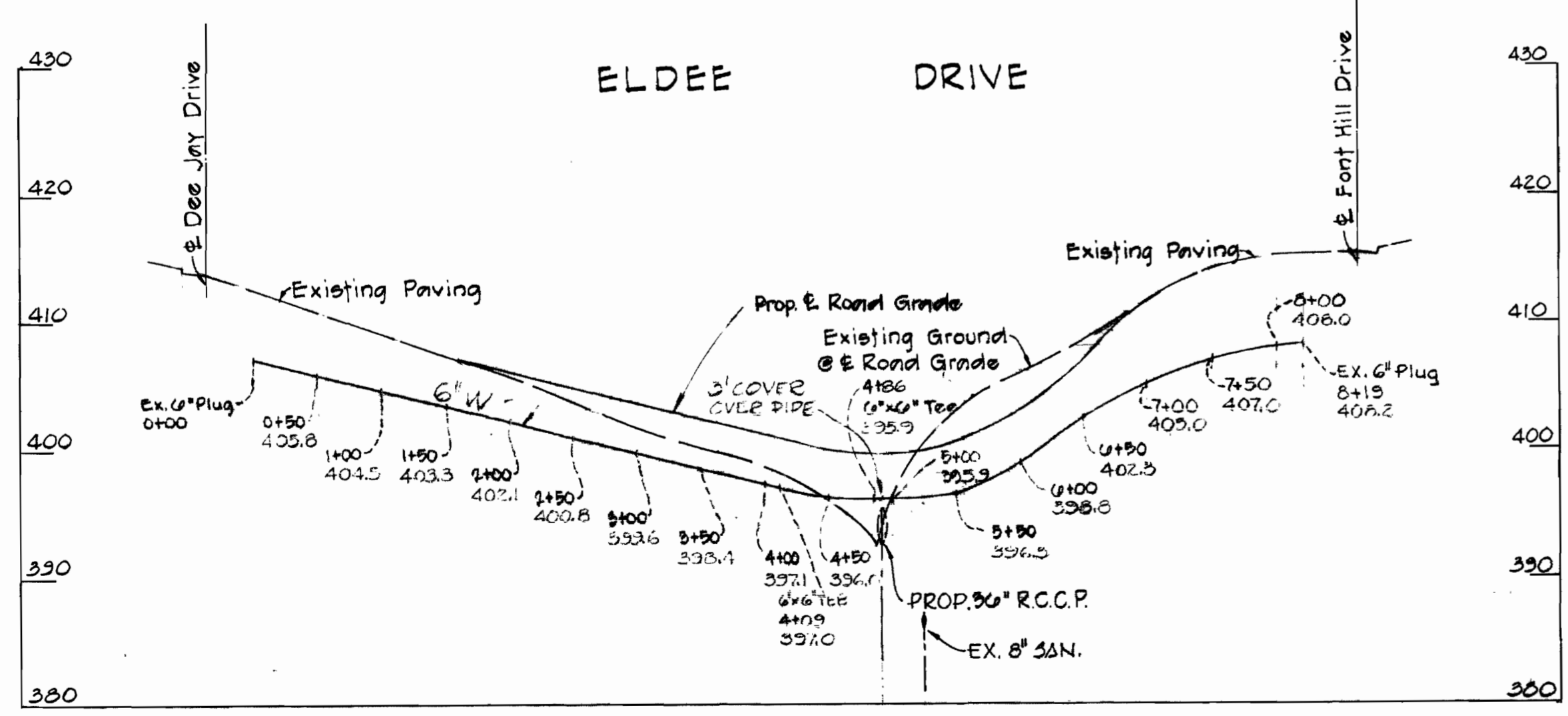


PLSU
 Scale: 1"=30'

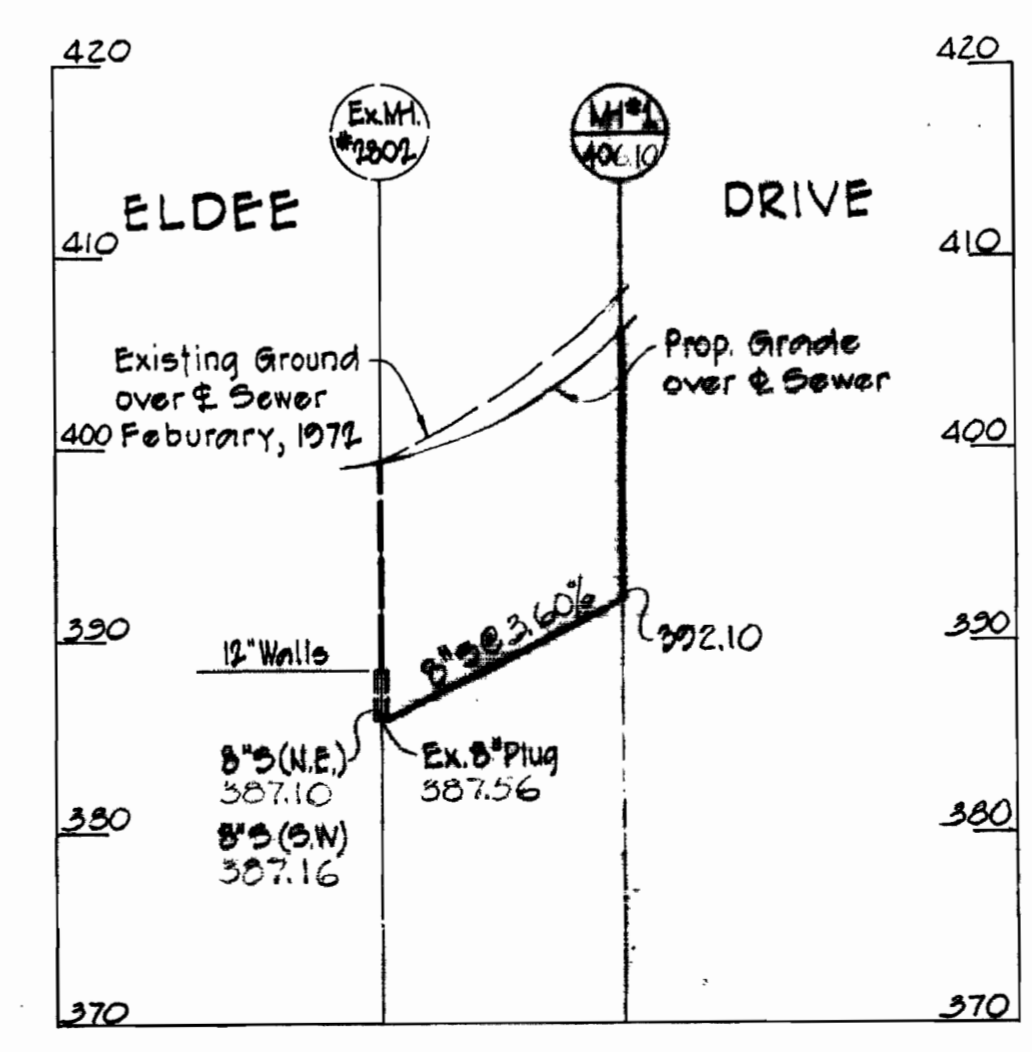
GENERAL NOTES

- 1) Approximate location of existing mains are shown. The Contractor shall take all necessary precautions to protect existing mains and services and maintain uninterrupted supply. Any damage incurred shall be repaired immediately at the contractor's expense.
- 2) All pipe elevations shown are invert elevations.
- 3) The Contractor shall locate existing utilities a minimum of two weeks in advance of construction operations in vicinity of utilities.
- 4) For all standard details see standards bound in Specifications.
- 5) All water mains shall have a minimum of 3±' cover unless otherwise noted.
- 6) Buttress all fittings with concrete, see standards bound in specifications.
- 7) Bury Line elevations on fire hydrants shall be set to the elevations shown on the drawings.
- 8) Cost of strapping fire hydrants and valves to be included in the unit price bid for furnishing and installing fire hydrants.
- 9) All fire hydrants shall be strapped to the tee and shall be buttressed with concrete in accordance with Standard Details.
- 10) Clear all utilities by a minimum of 6", clear all poles by 2'-0" minimum or tunnel as required.
- 11) All manholes shall be 4'-0" inside diameter.
- 12) The Contractor shall provide a joint within 2'-0" of exterior manhole walls.
- 13) All vertical and horizontal controls are based on Maryland State System.

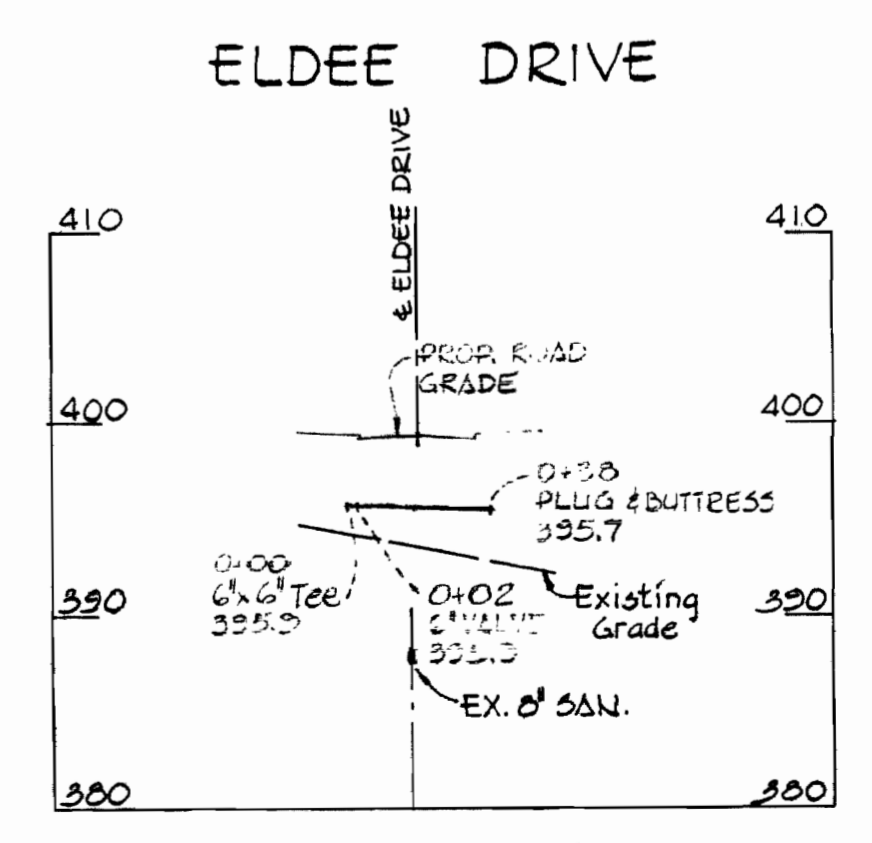
QUANTITIES	
8" Sewer	150 L.F.
6" Water	860 L.F.
Fire Hydrant	1 Ea.



PROFILE
 Scale: Hor. 1"=100'
 Vert. 1"=10'



PROFILE
 Scale: Hor. 1"=100'
 Vert. 1"=10'



PROFILE
 Scale: Hor. 1"=50'
 Vert. 1"=10'



Bryan M. JungCLAUS

PURDUM & JESCHKE
 ENGINEERS
 1023 N. CALVERT ST.
 BALTIMORE, MARYLAND

DEPARTMENT OF PUBLIC WORKS
 HOWARD COUNTY, MARYLAND
 9-27-72
 DATE

CONTRACT NO. 493 DW/5
 W.O. Filmer
 CHIEF - BUREAU OF WATER AND SEWER

PLAN & PROFILE
 WATER & SEWER MAINS

GWYNN ACRES - SECTION 13
 SECOND ELECTION DISTRICT

DRAWING NO. 1 OF 1
SCALE AS SHOWN