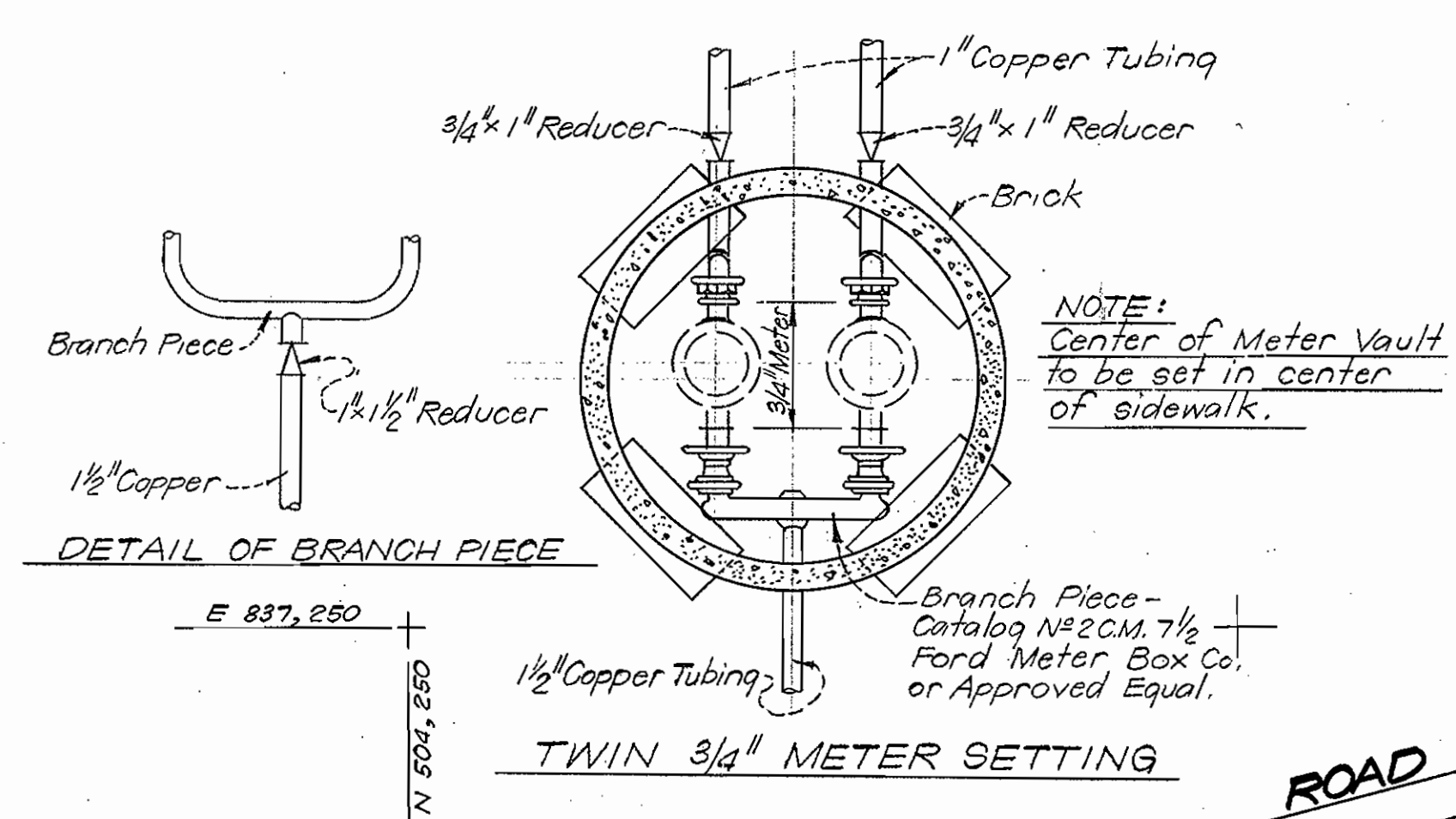
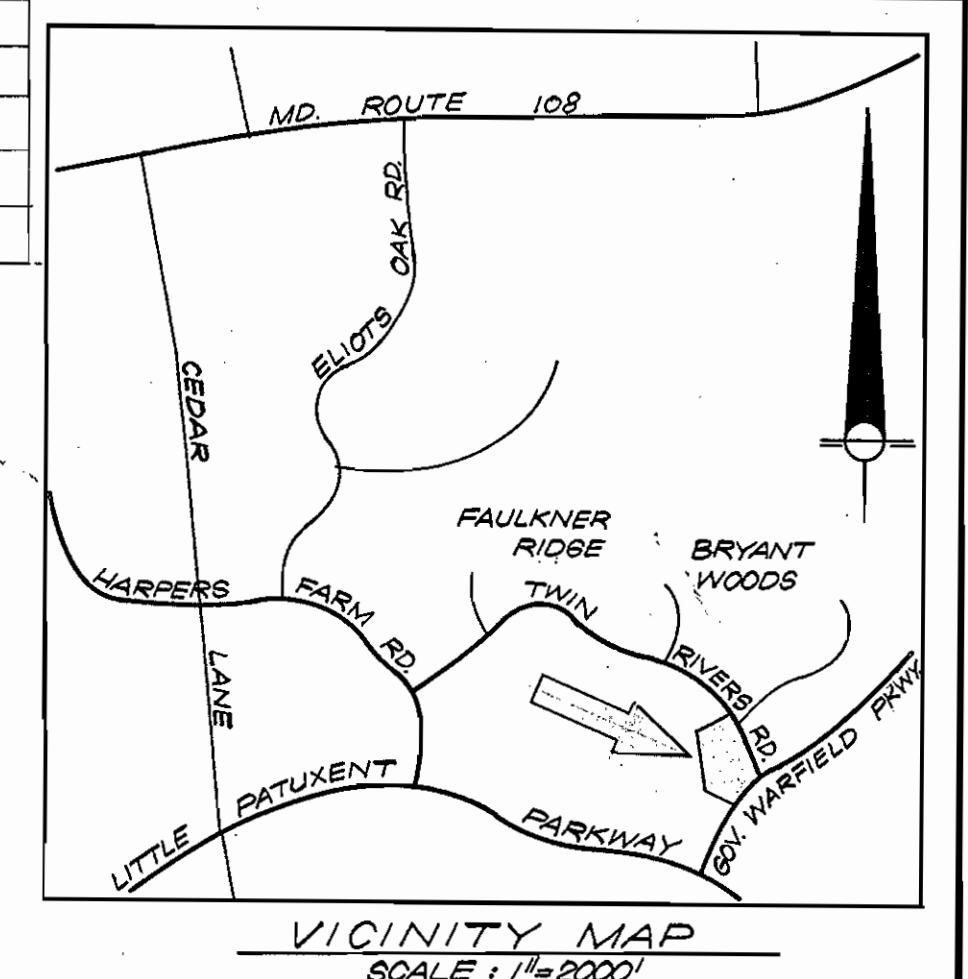


ITEM	QUANTITY
8" Sewer	2220 L.F.
3" Water	1485 L.F.
6" Water	130 L.F.
8" Water	1065 L.F.

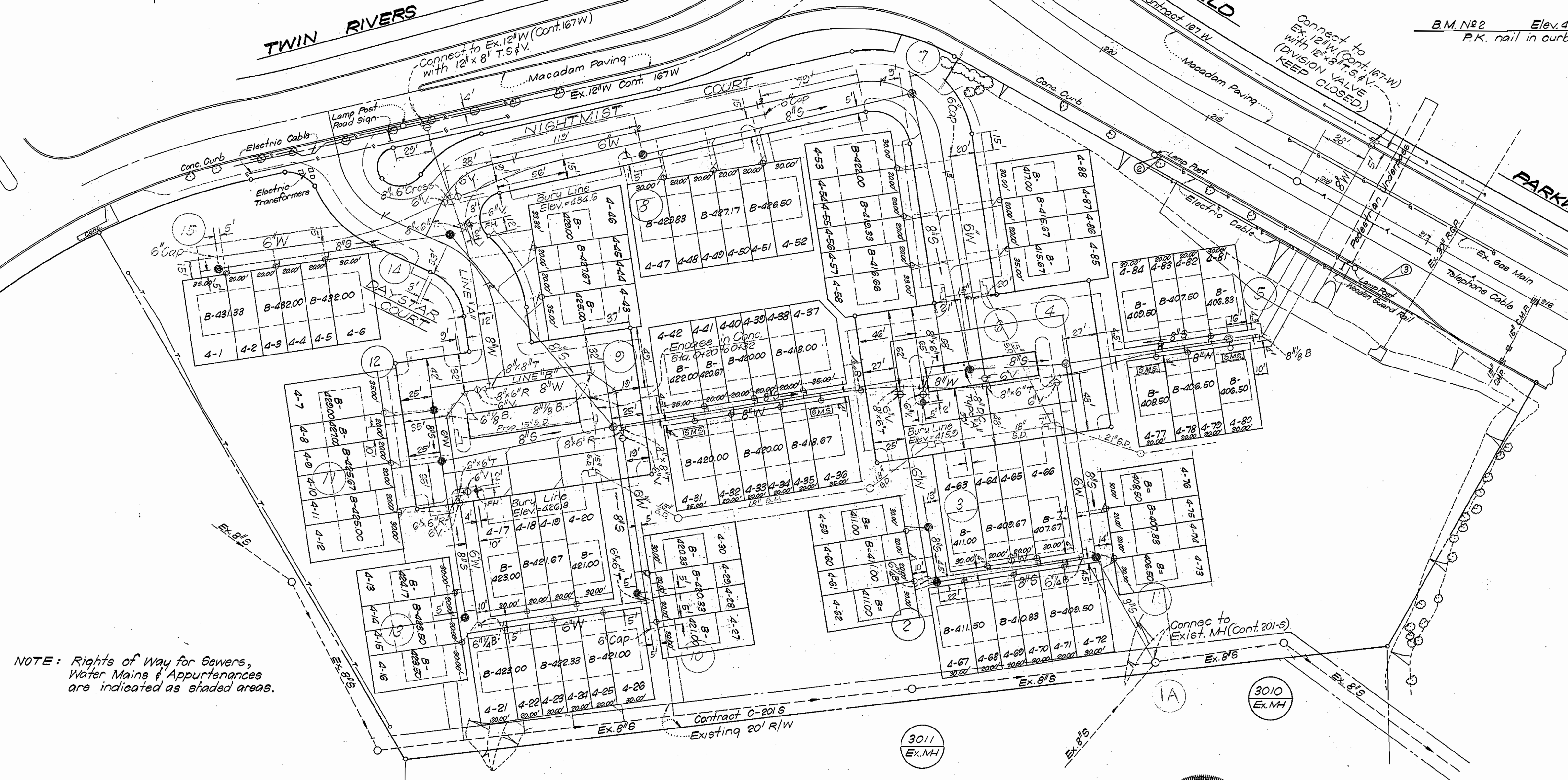


B.M. No 1 Elev. = 431.95
Square cut in top of curb.



B.M. No 2 Elev. = 416.72
P.K. nail in curb.

B.M. No 3 Elev. = 407.68
P.K. nail in curb.



NOTE: Rights of Way for Sewers, Water Mains & Appurtenances are indicated as shaded areas.

NOTE: Rim elevations, bury line elevations and proposed grades shown on this contract were taken from a site grading plan by Clark Finetrock & Sackett, dated June 1972.

- GENERAL NOTES**
1. Approximate location of existing utilities is shown. The Contractor shall take all necessary precautions to protect existing mains and services and maintain uninterrupted supply. Any damage incurred shall be repaired immediately.
 2. All pipe elevations shown are invert (I) elevations.
 3. The Contractor shall locate existing utilities a minimum of two weeks before construction operations in vicinity of existing utilities.
 4. For all standard details see standards bound in Specifications.
 5. All water mains to be C.I.P. class 22 or D.I.P. class 2 and have a minimum of 3 1/2' of cover.
 6. Block all fittings with concrete. See standard details bound in specifications.
 7. Bury line elevations on Fire Hydrants shall be set to elevations shown on plans.
 8. All Fire Hydrants shall be strapped to tee and buttressed with concrete in accordance with standard detail W-4.
 9. Clear all utilities by a minimum of 6', clear all poles by 2'-0" min. or tunnel as required.
 10. The contractor shall provide a joint in all sewer mains within 2'-0" of exterior manhole walls.
 11. All sewer mains to be V.C.P.X., C.S.P.X. or A.C.P. class 2400.
 12. S.H.C.'s to existing sewers to be made with Cast-Iron saddles.
 13. W.H.C.'s shall be 1" x 1 1/2"
 14. S.H.C.'s shall be 6"
 15. S.M.S. = Single 3/4" Meter Setting. All others shall be Twin 3/4" Meter Settings.
 16. All Manholes shall be 4'-0" inside diameter.
 17. All Horizontal and Vertical controls are based on Maryland State Datum.



Vernon P. Finetrock

<p>CLARK • FINEFROCK & SACKETT ENGINEERS • PLANNERS • SURVEYORS 1161 NEW HAMPSHIRE AVENUE • SILVER SPRING, MARYLAND 20904 • (301) 593-3400</p>	<p>DEPARTMENT OF PUBLIC WORKS HOWARD COUNTY, MARYLAND 1-8-73 DATE</p>	<p>CONTRACT NO. 490-D-W/S</p>	<p>PLAN OF WATER & SEWER MAINS</p>	<p>COLUMBIA VILLAGE OF WILDE LAKE ELECTION DISTRICT - CLARKSVILLE NO. 5</p>	<p>DRAWING NO. 1 OF 2</p>	<p>SCALE AS SHOWN</p>
	<p>For As-Built see sheet 3</p>					

WS 490 W/S 1/5