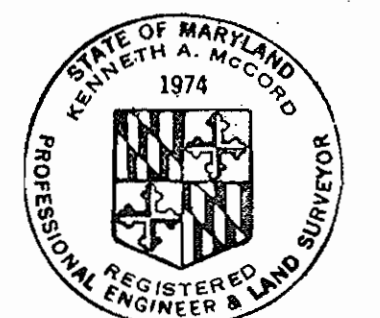


| QUANTITIES | |
|------------|-----------|
| ITEM | QUANTITY |
| 12" Sewer | 780 L.F. |
| 8" Sewer | 8000 L.F. |

CONTRACT C-489-D-S
VILLAGE OF OWEN BROWN
HOWARD COUNTY, MARYLAND
DEPARTMENT OF PUBLIC WORKS



Kenneth A. McLeod

Village of Owen Brown
 Section 1/3, Area 112
 Contract No. C-489-D-S

| | | | | | | |
|---|--|-------------------------------|--|---|--|--------------------|
| WHITMAN, REQUARDT & ASSOCIATES ENGINEERS 1304 ST. PAUL ST. BALTIMORE, MARYLAND | DEPARTMENT OF PUBLIC WORKS HOWARD COUNTY, MARYLAND 8-14-72 <i>W. O. Palbat</i> CHIEF - BUREAU OF WATER AND SEWER | CONTRACT NO. <u>C-489-D-S</u> | LOCATION MAP OF WATER & SEWER MAIN EXTENSIONS | COLUMBIA VILLAGE OF OWEN BROWN ELECTION DISTRICT GUILFORD No. 6 | DRAWING NO. <u>1</u> OF <u>8</u> | SCALE 1" = 800' |
|---|--|-------------------------------|--|---|--|--------------------|

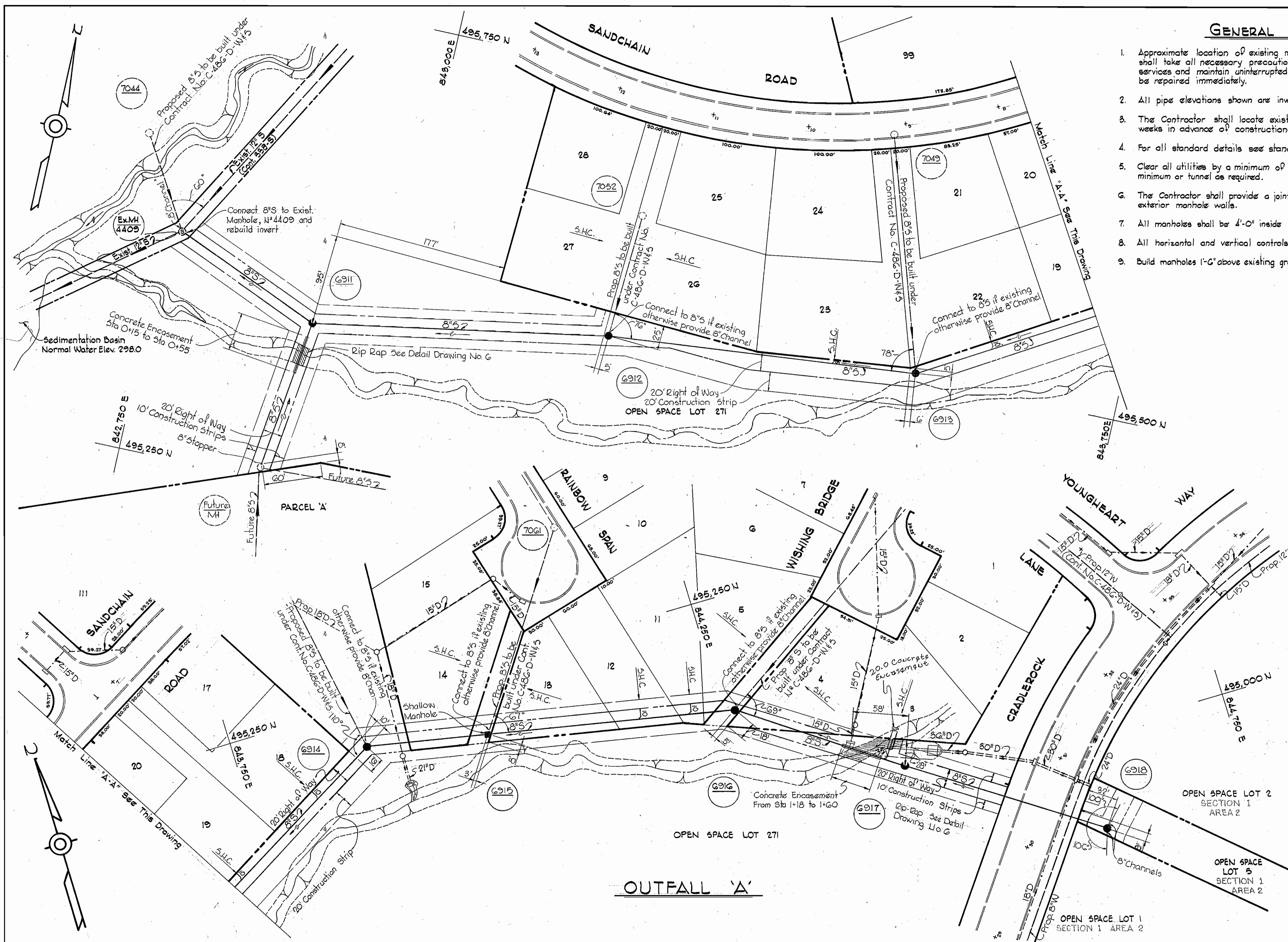
As-BUILT March 31, 1973

W. O. 6595

WS 489 5/1

GENERAL NOTES

1. Approximate location of existing mains are shown. The Contractor shall take all necessary precautions to protect existing mains and services and maintain uninterrupted supply. Any damage incurred shall be repaired immediately.
2. All pipe elevations shown are invert \ominus elevations.
3. The Contractor shall locate existing utilities a minimum of two weeks in advance of construction operations in vicinity of utilities.
4. For all standard details see standards bound in Specifications.
5. Clear all utilities by a minimum of 6', clear all poles by 2'-0" minimum or tunnel as required.
6. The Contractor shall provide a joint in all sewer mains within 2'-0" of exterior manhole walls.
7. All manholes shall be 4'-0" inside diameter.
8. All horizontal and vertical controls are based on Maryland State Datum.
9. Build manholes 1'-6" above existing ground, unless otherwise noted.



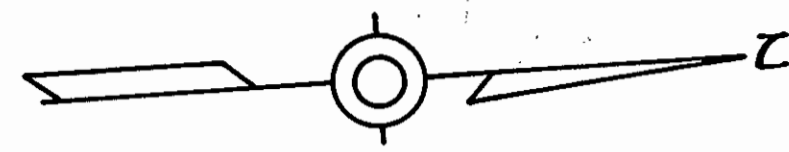
Kenneth A. McCord

Village of Owen Brown
Section 113, Area 112
Contract No. C-489-D-5

| | | | | | |
|---|--|------------------------|------------------------|---|--------------------------------------|
| WHITMAN, REQUARDT & ASSOCIATES ENGINEERS 1304 ST. PAUL ST. BALTIMORE, MARYLAND | DEPARTMENT OF PUBLIC WORKS HOWARD COUNTY, MARYLAND 8-14-72 <i>W. O. G595-2</i> DATE CHIEF - BUREAU OF WATER AND SEWER | CONTRACT NO. C-489-D-S | PLAN OF SEWER MAINS | COLUMBIA VILLAGE OF OWEN BROWN ELECTION DISTRICT GUILFORD NO. 6 | DRAWING NO. 2 OF 8 SCALE 1" = 50' |
|---|--|------------------------|------------------------|---|--------------------------------------|

WS 489 5/2

ENGINE 44,510 14775



OPEN SPACE LOT 4
SECTION 1 AREA 2

OPEN SPACE LOT 3
SECTION 1 AREA 2

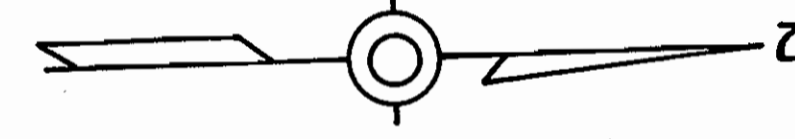
PARCEL 'D'
SECTION 1
AREA 2

Concrete Encasement
From Sta 1+71 to Sta. 2+16

Concrete Encasement
Sta 0+20 to Sta. 0+50

Concrete Encasement
From Sta 0+44 to Sta. 0+85

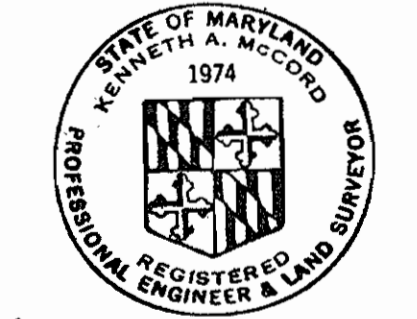
Concrete Encasement
0+12 to 0+38



845,750 E
N 000 767

845,750 E
N 494,500

846,000 E
N 000 767



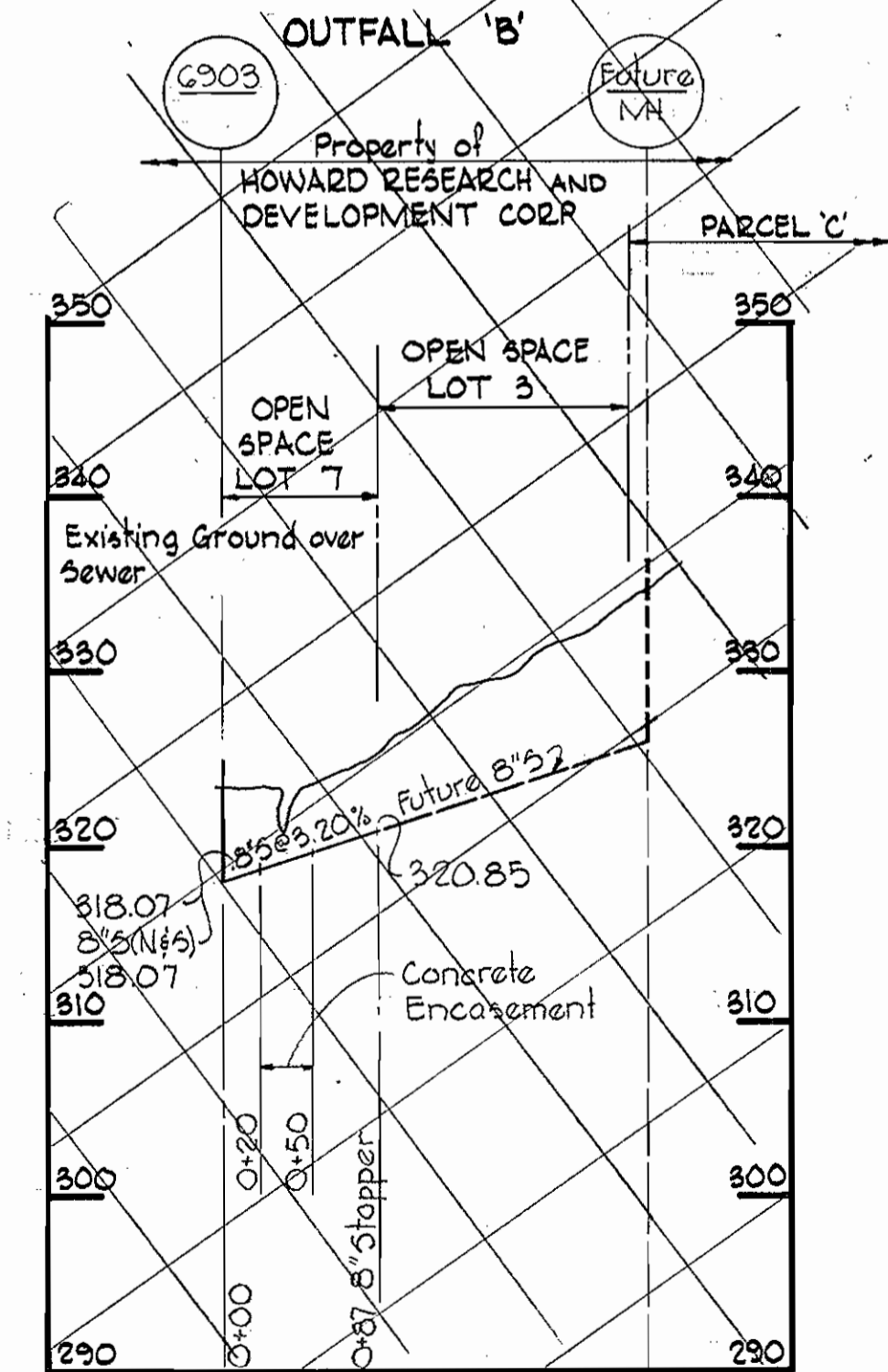
Kenneth A. McCord

Village of Owen Brown
Section 113, Area 112
Contract No. C-489-D-5

DRAWING NO. 3 OF 8 SCALE 1" = 50'

As-BUILT March 31, 1973

Aug 12, 1972



OUTFALL 'B'

CONTRACT NO. C-489-D-5

PLAN OF SEWER MAINS

COLUMBIA VILLAGE OF OWEN BROWN ELECTION DISTRICT GUILFORD NO. 6

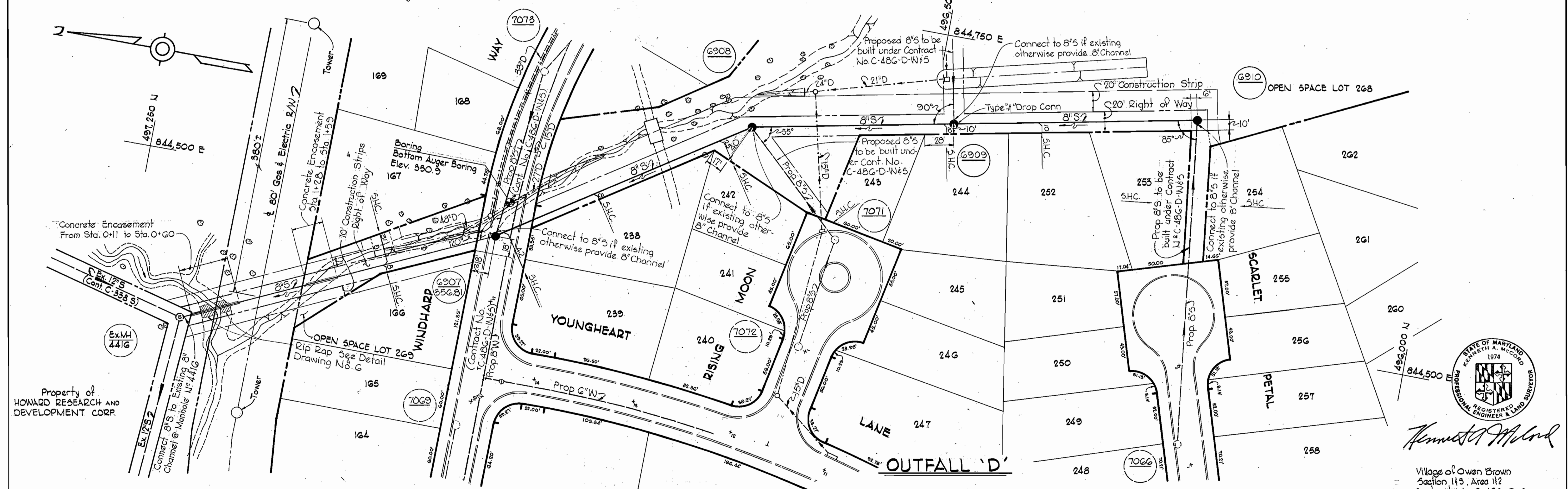
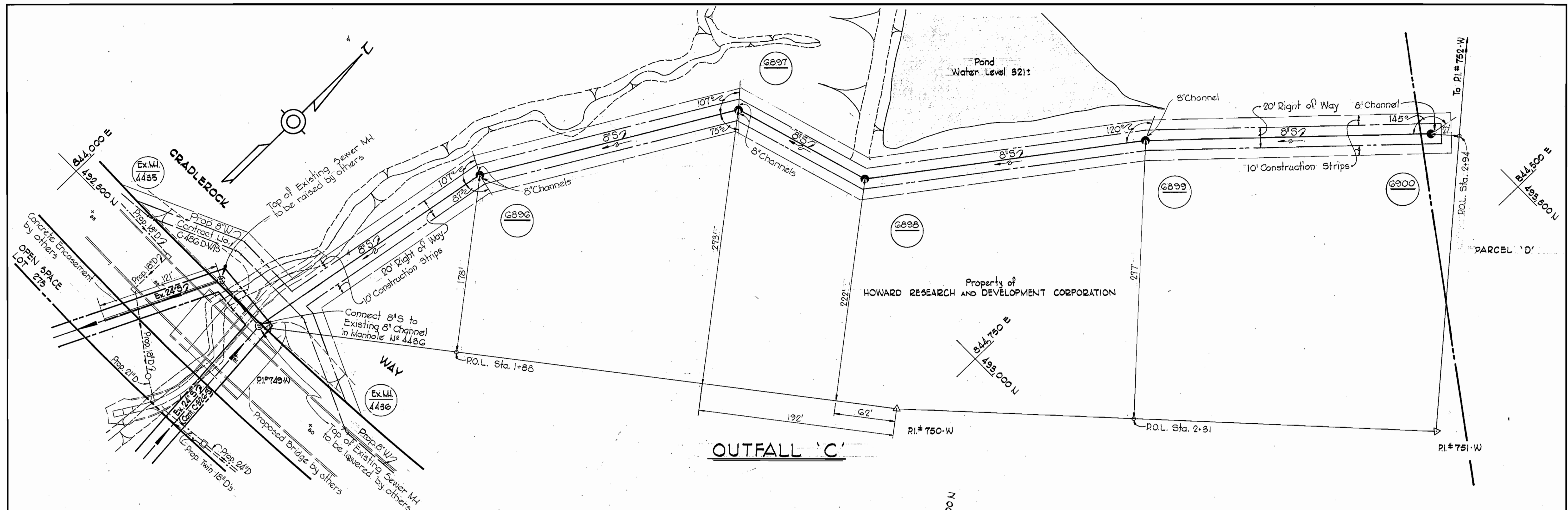
WHITMAN, REQUARDT & ASSOCIATES ENGINEERS 1304 ST. PAUL ST. BALTIMORE, MARYLAND

DEPARTMENT OF PUBLIC WORKS HOWARD COUNTY, MARYLAND DATE 8-14-72 W.O. Fulbert CHIEF - BUREAU OF WATER AND SEWER

W. O. 6595-2

WS 489 5/3

BRUNING 47-51 14728



Kenneth A. McLeod

Village of Owen Brown
 Section 143, Area 112
 Contract No. C-489-D-5

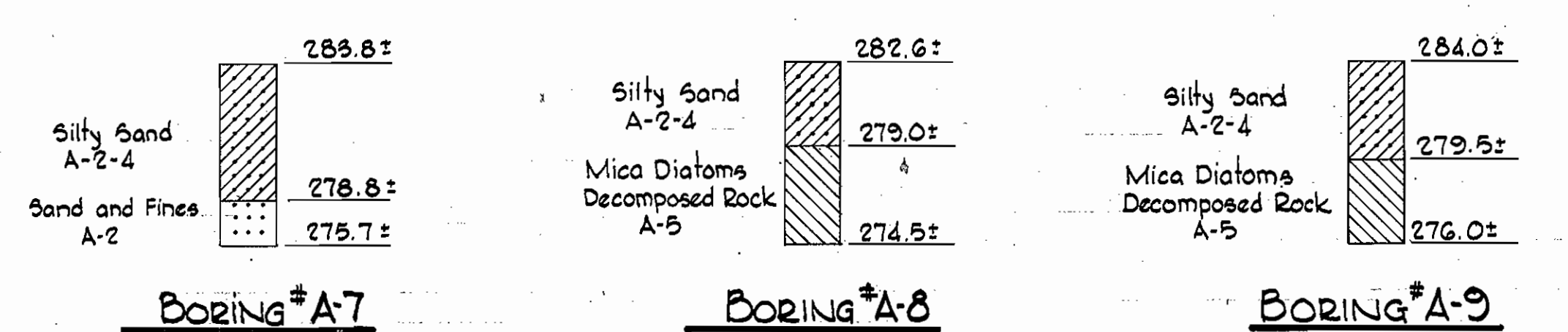
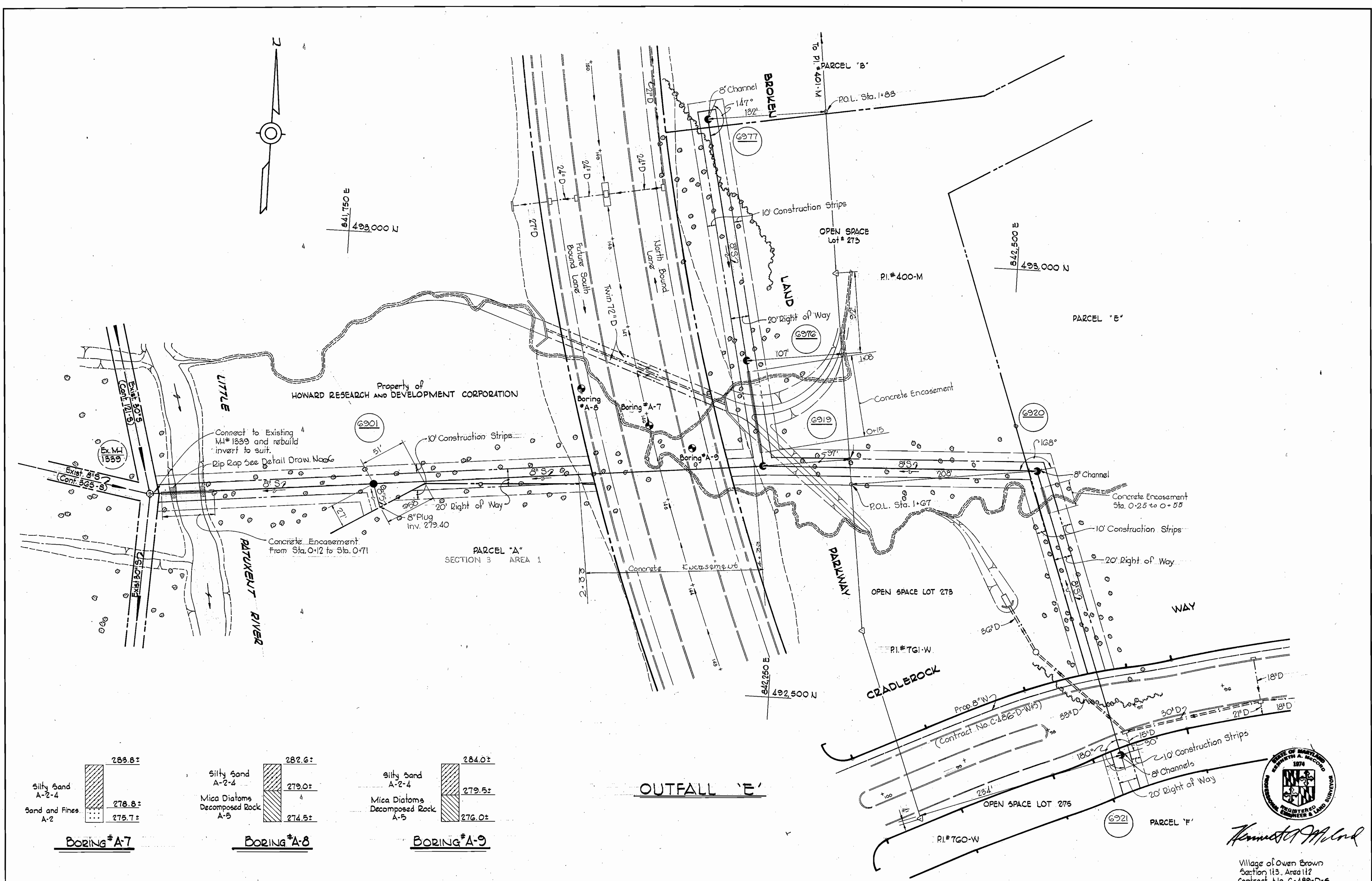
| | | | | | |
|---|---|------------------------|------------------------|---|--------------------------------------|
| WHITMAN, REQUARDT & ASSOCIATES ENGINEERS 1304 ST. PAUL ST. BALTIMORE, MARYLAND | DEPARTMENT OF PUBLIC WORKS HOWARD COUNTY, MARYLAND 8-14-72 <i>W. O. Fallert</i> CHIEF - BUREAU OF WATER AND SEWER | CONTRACT NO. C-489-D-5 | PLAN OF SEWER MAINS | COLUMBIA VILLAGE OF OWEN BROWN ELECTION DISTRICT GUILFORD NO. 6 | DRAWING NO. 4 OF 8 SCALE 1" = 50' |
|---|---|------------------------|------------------------|---|--------------------------------------|

W. O. 6595-2

As-BUILT March 31, 1973
 Aug 12, 1972

WS 489 S/4

BRUNING 24,510 14778

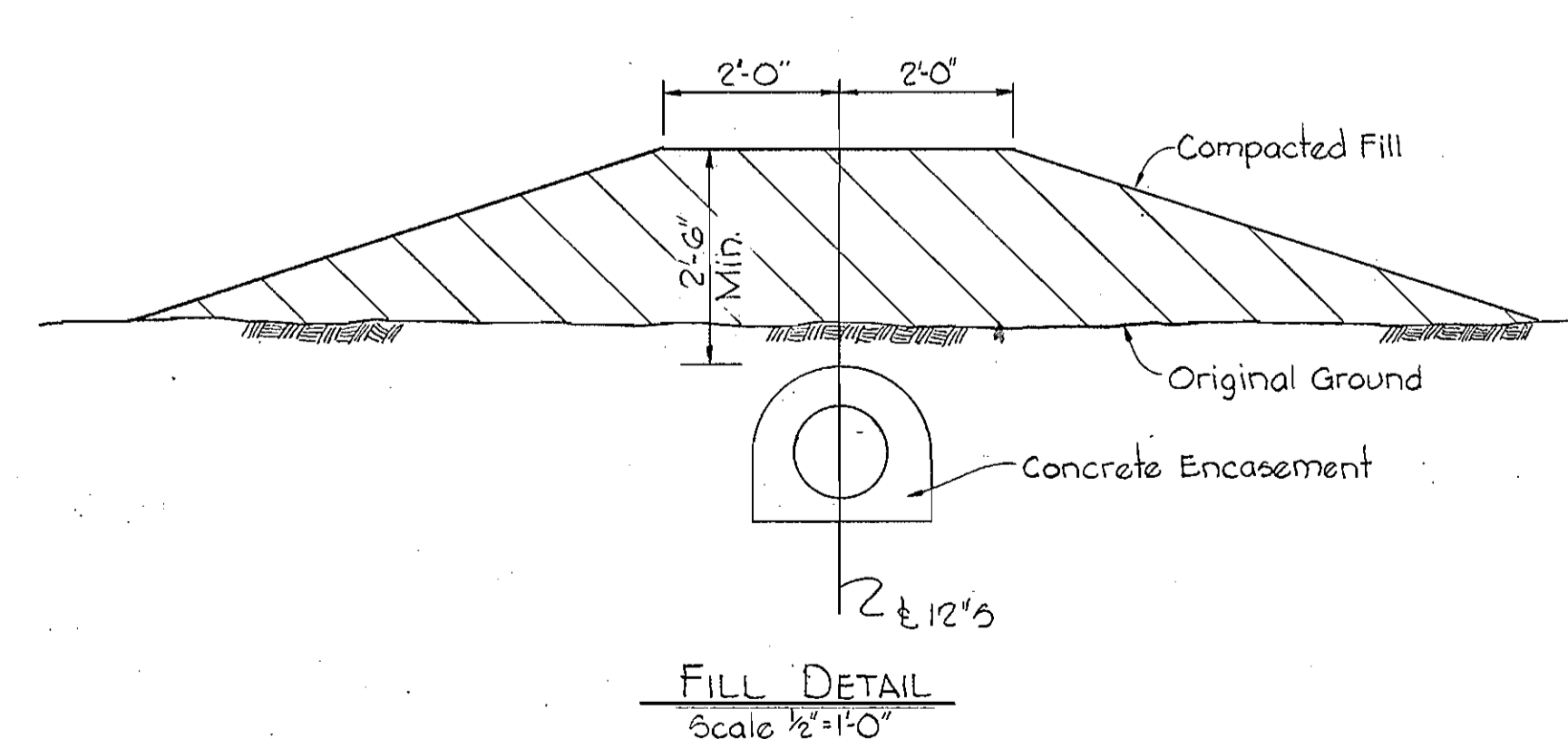
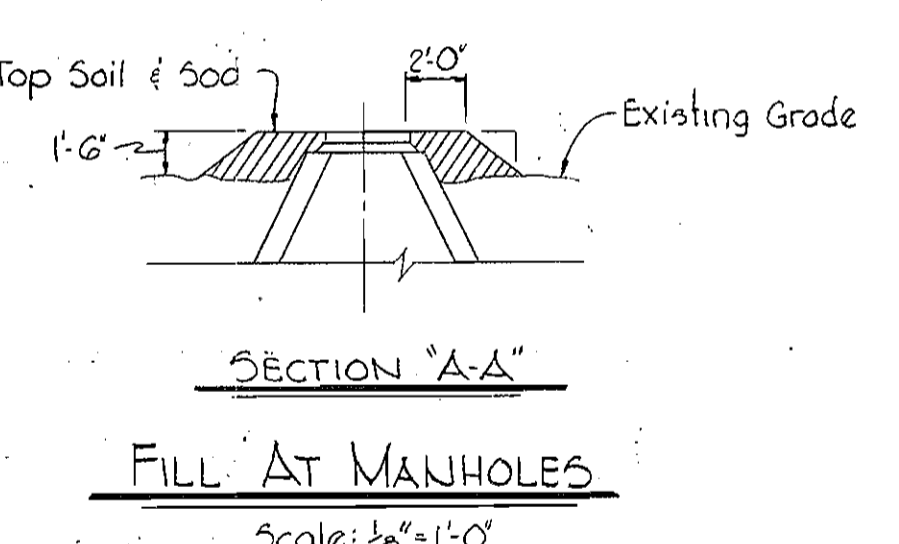
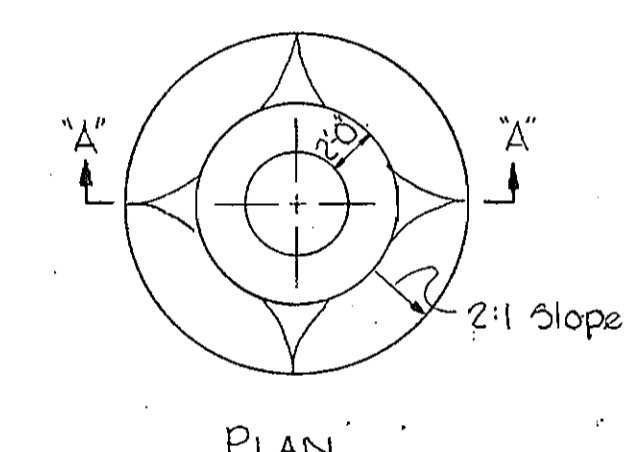
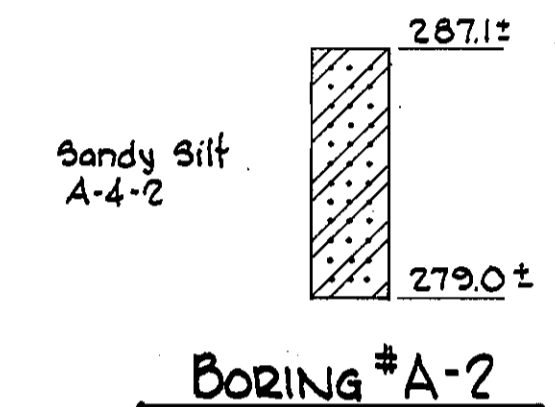
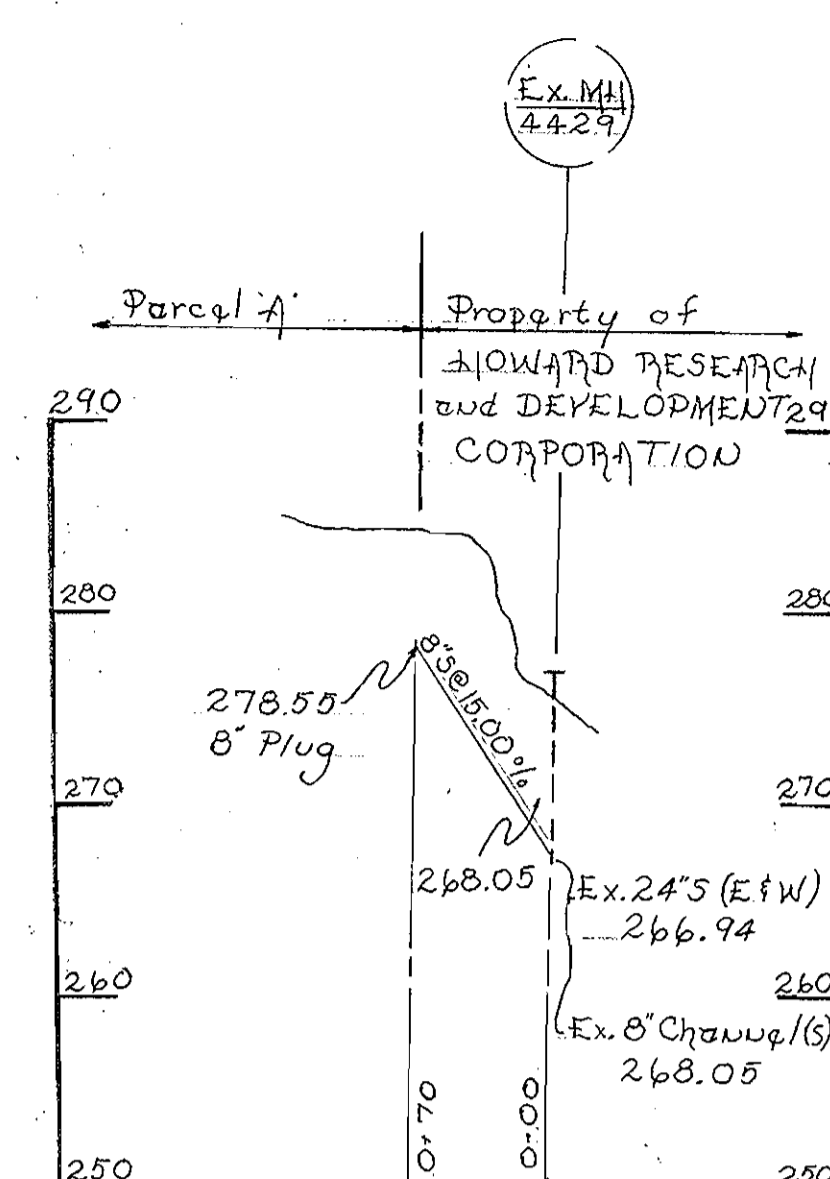
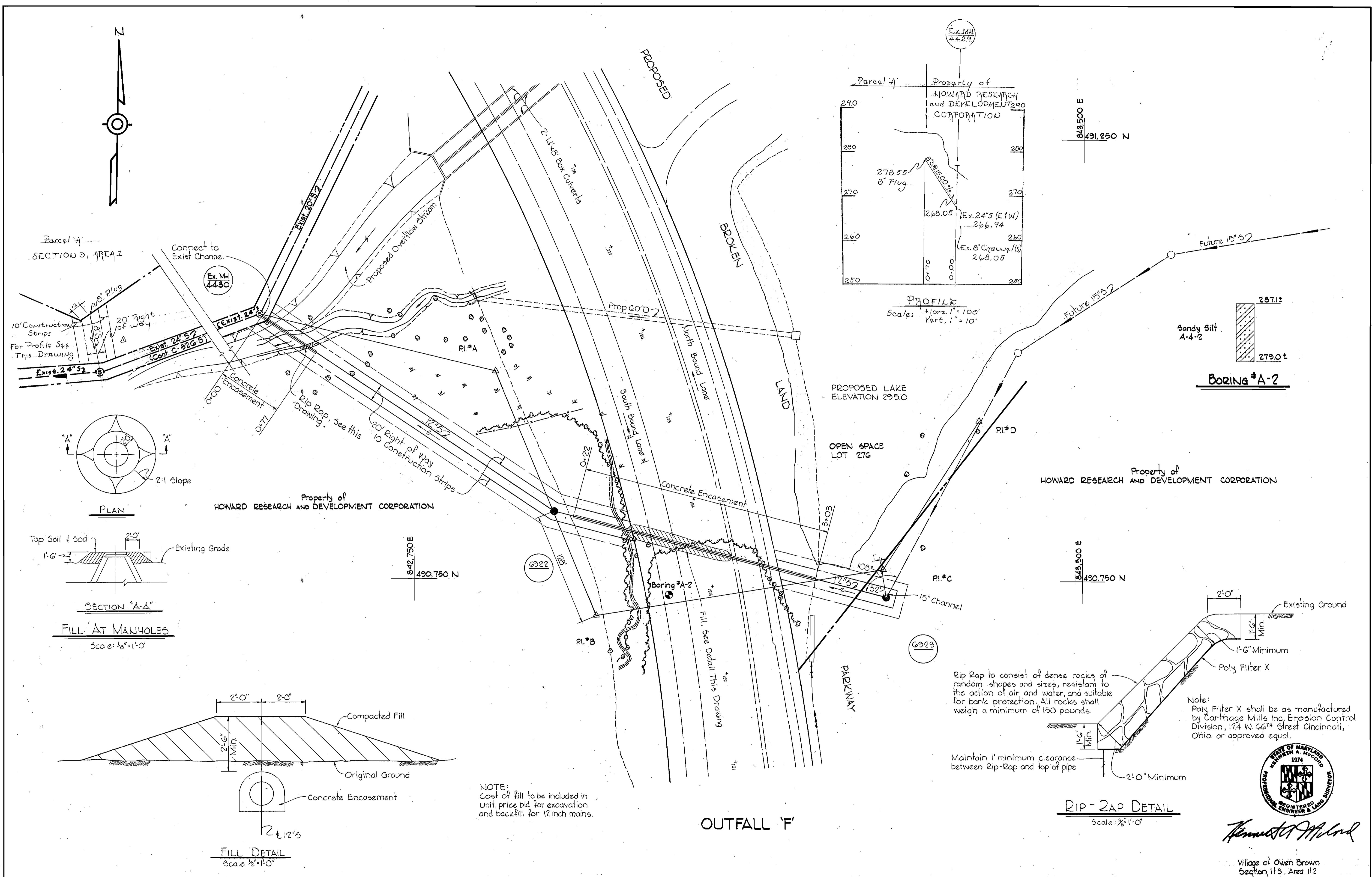


Kenneth A. McLeod

Village of Owen Brown
Section 113, Area 112
Contract No. C-489-D-5

| | | | | | |
|---|--|------------------------|------------------------|---|--------------------------------------|
| WHITMAN, REQUARDT & ASSOCIATES ENGINEERS 1304 ST. PAUL ST. BALTIMORE, MARYLAND | DEPARTMENT OF PUBLIC WORKS HOWARD COUNTY, MARYLAND 8-14-72 <i>W. O. Falber</i> CHIEF - BUREAU OF WATER AND SEWER | CONTRACT NO. C-489-D-5 | PLAN OF SEWER MAINS | COLUMBIA VILLAGE OF OWEN BROWN ELECTION DISTRICT GUILFORD NO. 6 | DRAWING NO. 5 OF 8 SCALE 1" = 50' |
|---|--|------------------------|------------------------|---|--------------------------------------|

WS 489 S/5 SM

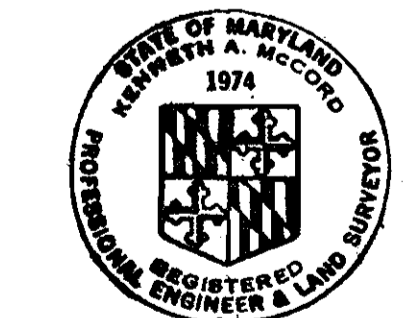


NOTE:
Cost of fill to be included in unit price bid for excavation and backfill for 12 inch mains.

Rip Rap to consist of dense rocks of random shapes and sizes, resistant to the action of air and water, and suitable for bank protection. All rocks shall weigh a minimum of 150 pounds.

Maintain 1' minimum clearance between Rip-Rap and top of pipe

Note:
Poly Filter X shall be as manufactured by Carthage Mills Inc. Erosion Control Division, 124 W. 66th Street Cincinnati, Ohio or approved equal.



Kenneth A. McCord

| | | | | | | |
|---|---|------------------------|------------------------------------|---|--------------------------|----------------------|
| WHITMAN, REQUARDT & ASSOCIATES ENGINEERS 1304 ST. PAUL ST. BALTIMORE, MARYLAND | DEPARTMENT OF PUBLIC WORKS HOWARD COUNTY, MARYLAND 8-14-72 DATE <i>W. O. Gilbert</i> CHIEF - BUREAU OF WATER AND SEWER | CONTRACT NO. C-489-D-5 | PLAN AND DETAILS OF SEWER MAINS | COLUMBIA VILLAGE OF OWEN BROWN ELECTION DISTRICT GUILFORD NO. 6 | DRAWING NO. 6 OF 8 | SCALE AS SHOWN |
|---|---|------------------------|------------------------------------|---|--------------------------|----------------------|

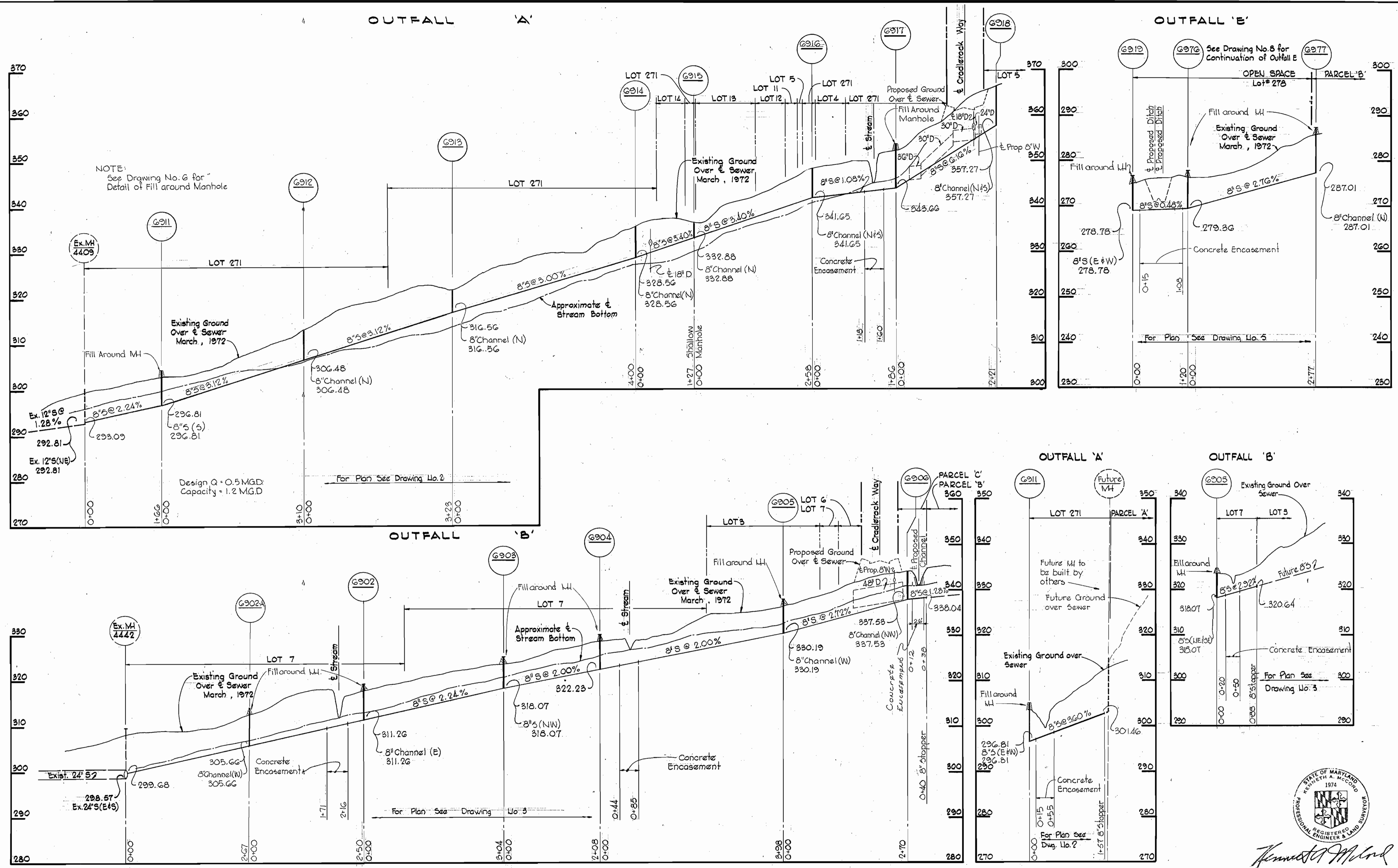
W. O. 6595-2

As BUILT March 31, 1973

Aug. 12, 1972

WS 489 S/6

BRUNING 4-500 1-27-78



Kenneth M. Lund

Village of Owen Brown
Section 113, Area 112
Contract No. C-489-D-5

WHITMAN, REQUARDT & ASSOCIATES
ENGINEERS
1304 ST. PAUL ST.
BALTIMORE, MARYLAND

DEPARTMENT OF PUBLIC WORKS
HOWARD COUNTY, MARYLAND
8-14-72
W. O. Falwell
CHIEF - BUREAU OF WATER AND SEWER

CONTRACT NO. C-489-D-5

PROFILES OF
SEWER MAINS

COLUMBIA
VILLAGE OF OWEN BROWN
ELECTION DISTRICT GUILFORD NO. 6

DRAWING NO. 7
OF 8
SCALE H:1"=100'
V:1"=10'

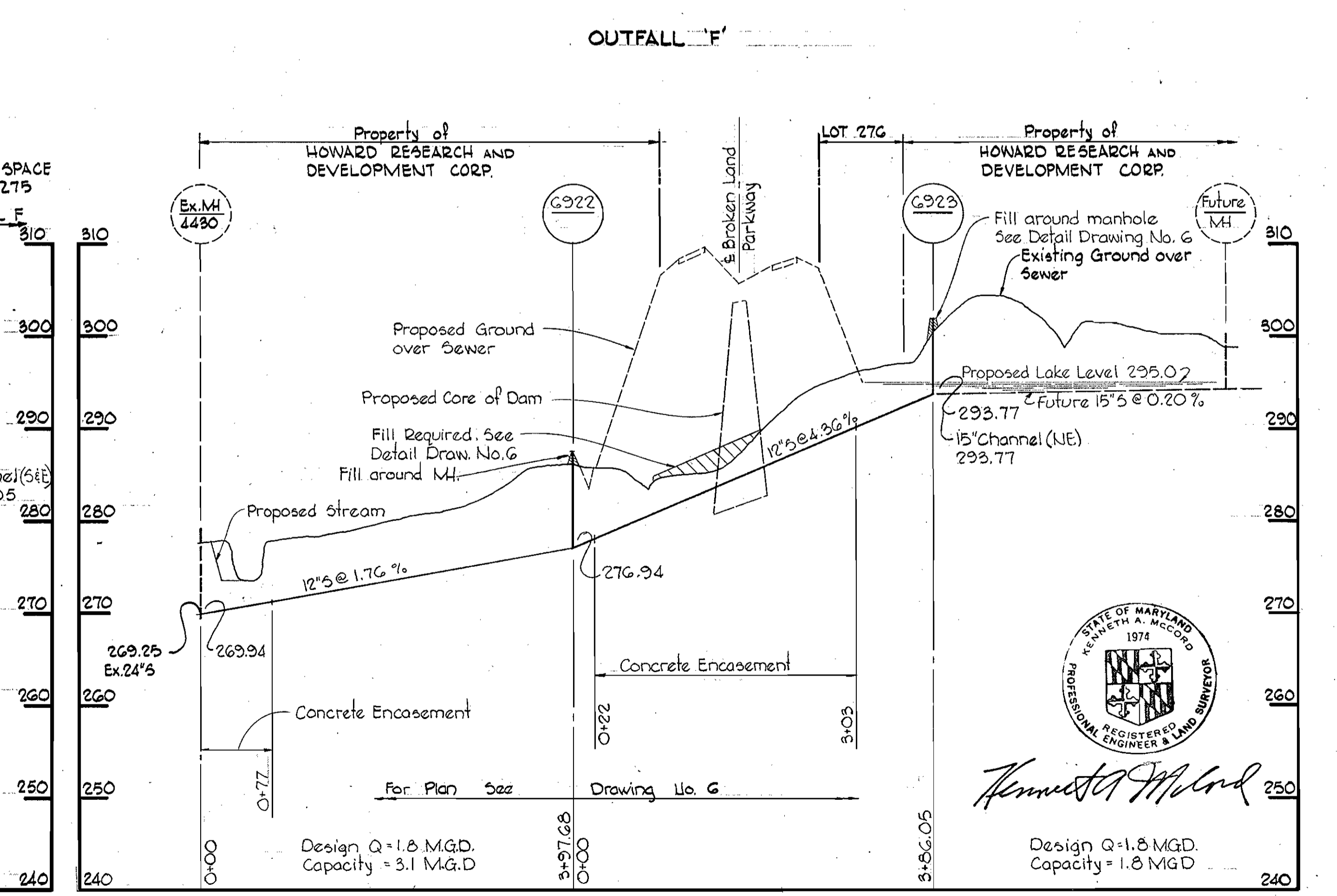
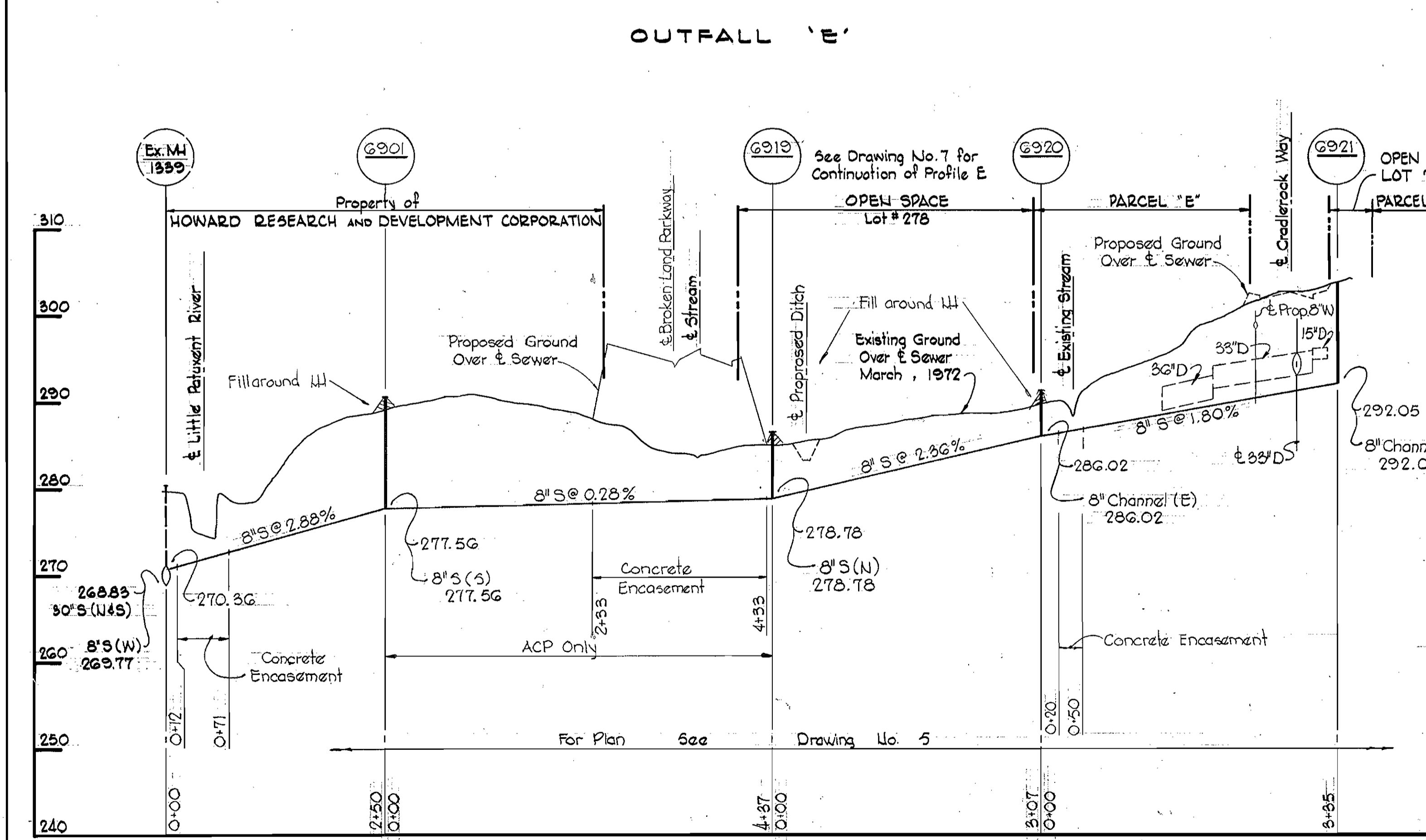
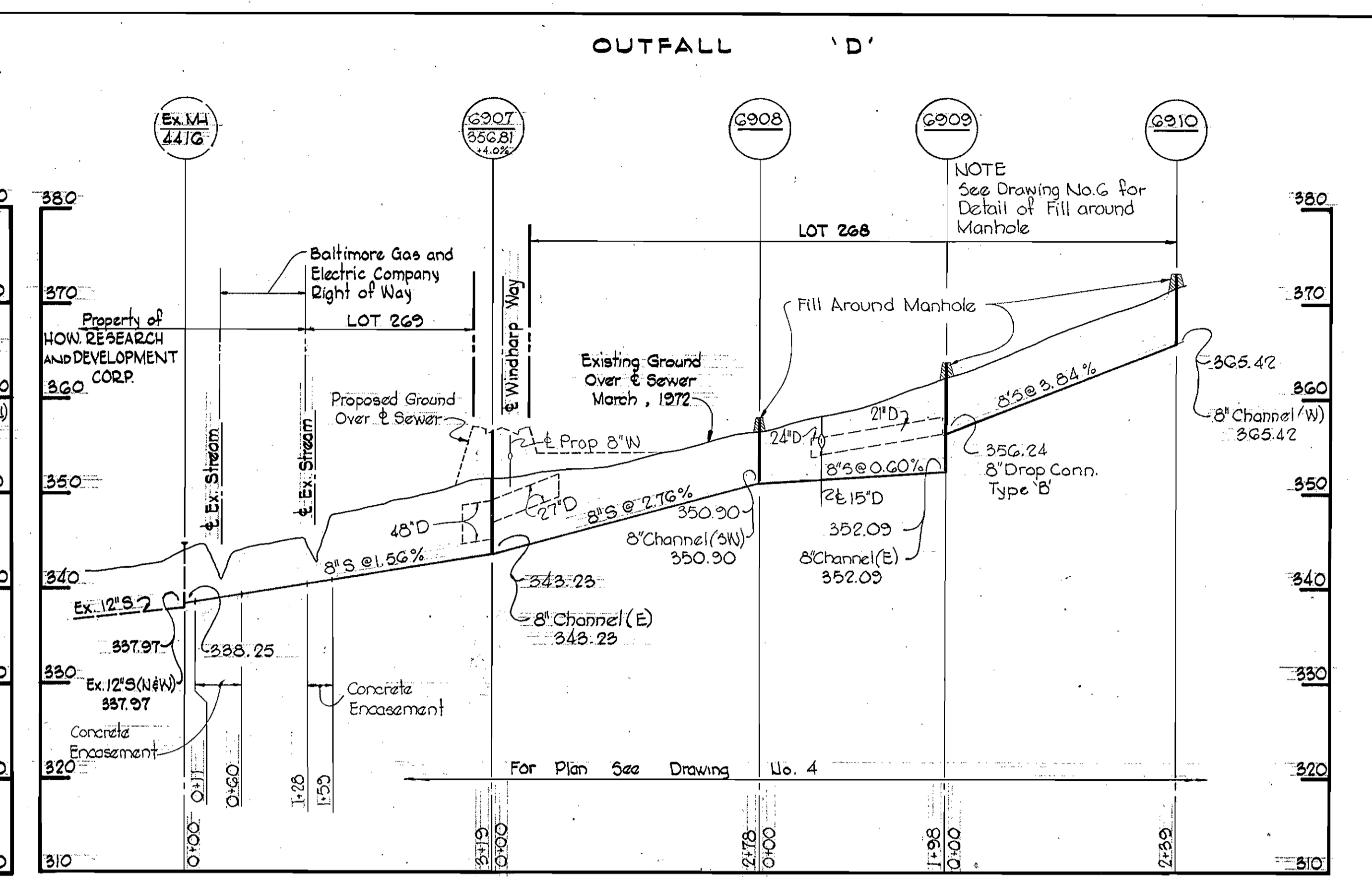
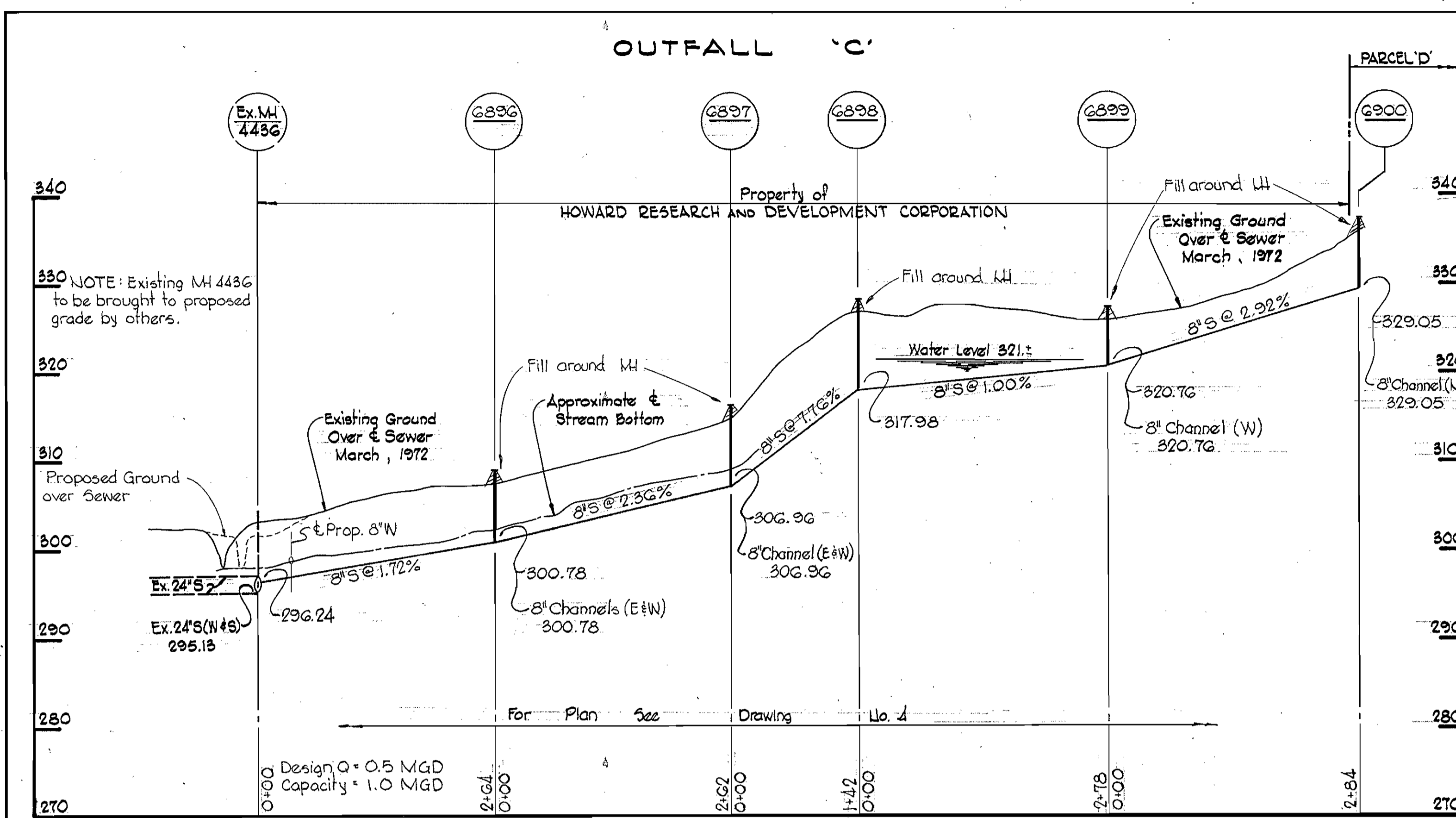
As-Built March 31, 1973

Aug 12, 1972

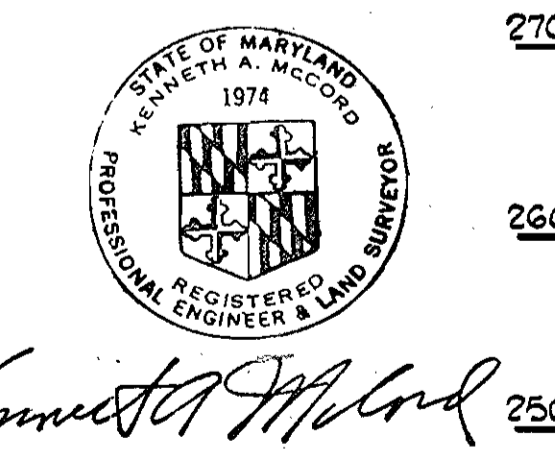
W. O. G595-2

WS 489 5/7

10/14/78



| | | | | | |
|--|--|-------------------------------|--|---------------------------|-----------------------------------|
| WHITMAN, REQUARDT & ASSOCIATES ENGINEERS 1304 ST. PAUL ST. BALTIMORE, MARYLAND | DEPARTMENT OF PUBLIC WORKS HOWARD COUNTY, MARYLAND DATE: 8-14-72 <i>W. O. Fulbert</i> CHIEF - BUREAU OF WATER AND SEWER | CONTRACT NO. C-489-D-5 | PROFILES OF SEWER MAINS COLUMBIA VILLAGE OF OWEN BROWN ELECTION DISTRICT GUILFORD NO. 6 | DRAWING NO. 8 OF 8 | SCALE H: 1"=100' V: 1"=10' |
| W. O. 6595-2 | | As-BUILT March 31, 1973 | | | |



Kenneth A. McCord
 Design Q = 1.8 MGD
 Capacity = 1.8 MGD

Village of Owen Brown
 Section 113, Area 112
 Contract No. C-489-D-5

AUG 12, 1972