

SHEET INDEX	
NO.	DESCRIPTION
1	TITLE SHEET
2	PLAN - SUNNY SPRING
3	PLAN - SUNNY SPRING, INTERCEPTOR 'C'
4	PLAN - BRIGHT PLUME, INTERCEPTOR 'F,G,H'
5	PLAN - GOLDEN HOOK, CRICKET PASS, SLENDER SKY, PLAITED REED
6	PLAN - INTERCEPTOR 'A,B,I'
7	PROFILE - INTERCEPTOR 'A-H'
8	PROFILE - SUNNY SPRING, CRICKET PASS, PLAITED REED
9	PROFILE - BRIGHT PLUME, SLENDER SKY, GOLDEN HOOK, INTERCEPTOR 'I,J'

# CONTRACT 2488-D-W&S

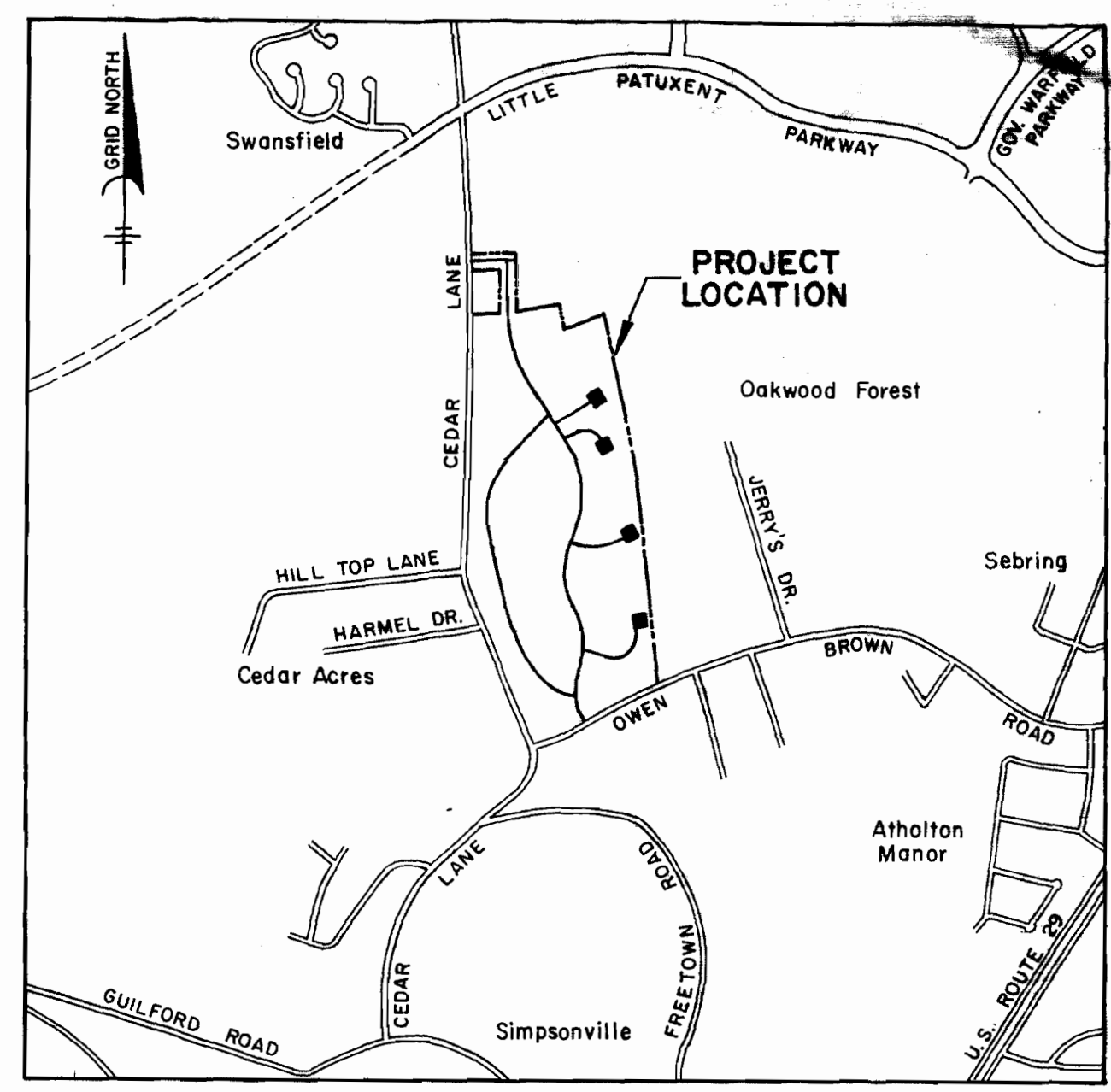
## DEPARTMENT OF PUBLIC WORKS

### HOWARD COUNTY, MARYLAND

# WATER AND SEWERAGE FACILITIES

## TO SERVE VILLAGE OF HICKORY RIDGE

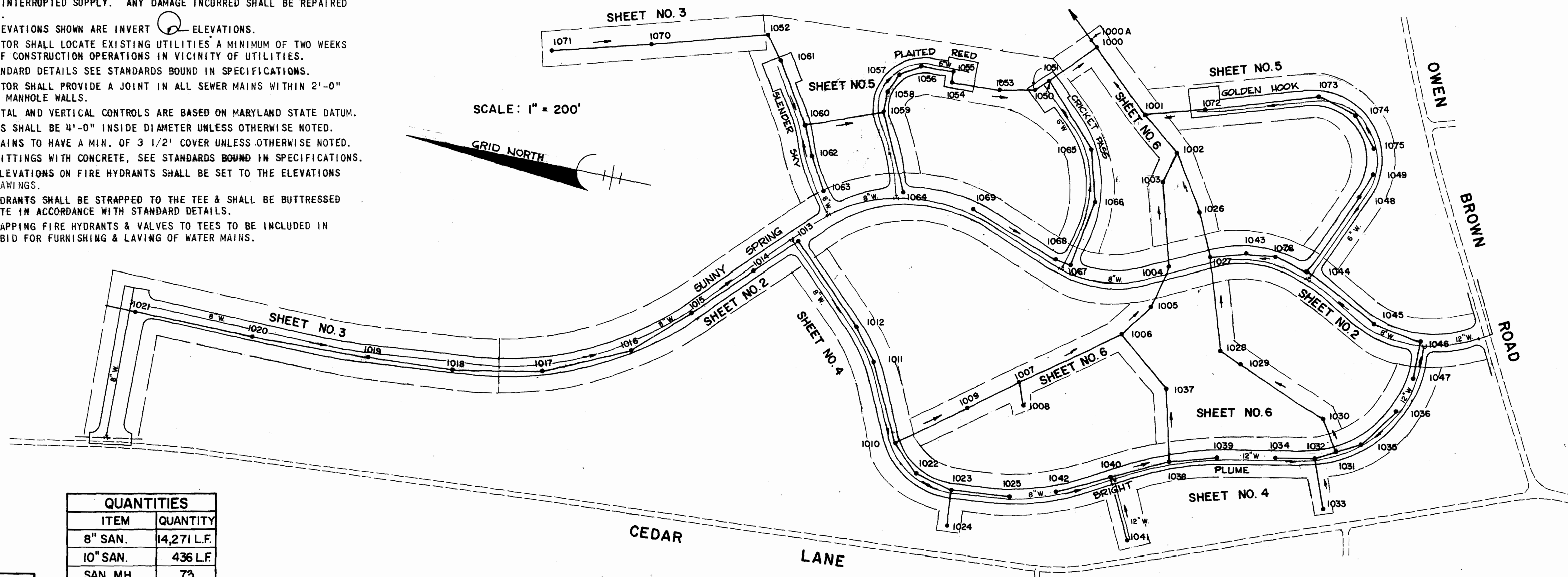
### SECTION I - AREA I



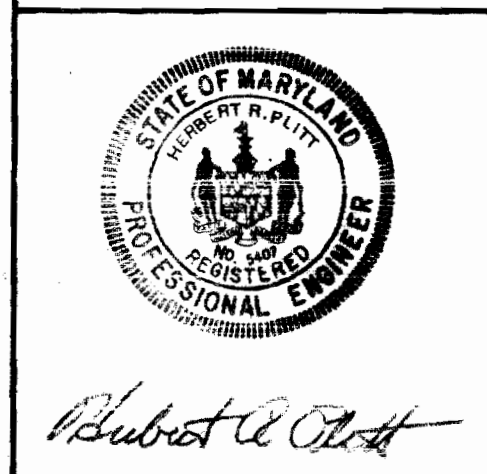
**VICINITY MAP**  
SCALE IN MILES

**GENERAL NOTES**

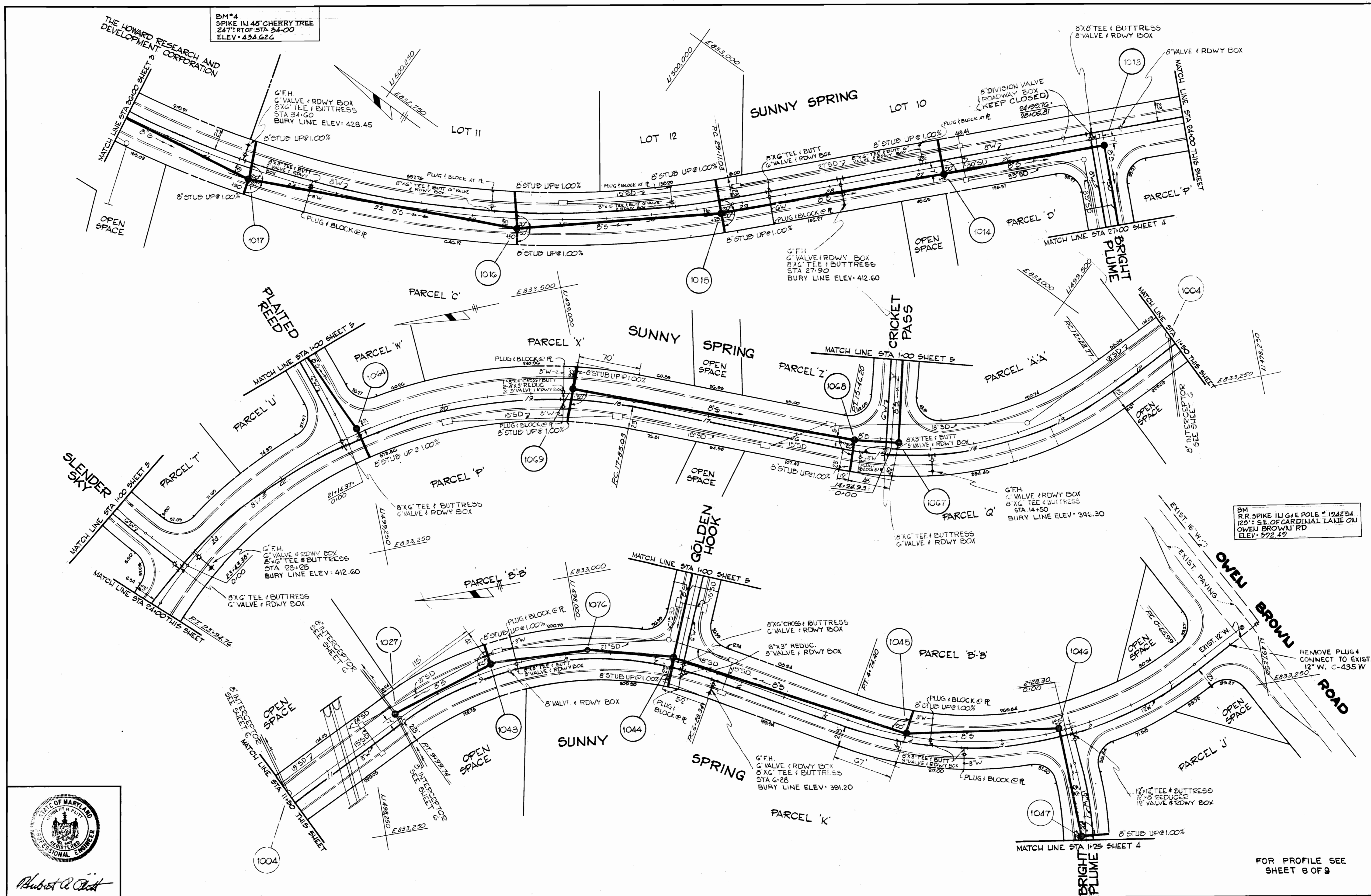
1. APPROXIMATE LOCATION OF EXISTING MAINS ARE SHOWN. THE CONTRACTOR SHALL TAKE ALL NECESSARY PRECAUTIONS TO PROTECT EXISTING AND SERVICES AND MAINTAIN UNINTERRUPTED SUPPLY. ANY DAMAGE INCURRED SHALL BE REPAIRED IMMEDIATELY.
2. ALL PIPE ELEVATIONS SHOWN ARE INVERT ELEVATIONS.
3. THE CONTRACTOR SHALL LOCATE EXISTING UTILITIES A MINIMUM OF TWO WEEKS IN ADVANCE OF CONSTRUCTION OPERATIONS IN VICINITY OF UTILITIES.
4. FOR ALL STANDARD DETAILS SEE STANDARDS BOUND IN SPECIFICATIONS.
5. THE CONTRACTOR SHALL PROVIDE A JOINT IN ALL SEWER MAINS WITHIN 2'-0" OF EXTERIOR MANHOLE WALLS.
6. ALL HORIZONTAL AND VERTICAL CONTROLS ARE BASED ON MARYLAND STATE DATUM.
7. ALL MANHOLES SHALL BE 4'-0" INSIDE DIAMETER UNLESS OTHERWISE NOTED.
8. ALL WATER MAINS TO HAVE A MIN. OF 3 1/2' COVER UNLESS OTHERWISE NOTED.
9. BLOCK ALL FITTINGS WITH CONCRETE, SEE STANDARDS BOUND IN SPECIFICATIONS.
10. BURY LINE ELEVATIONS ON FIRE HYDRANTS SHALL BE SET TO THE ELEVATIONS SHOWN ON DRAWINGS.
11. ALL FIRE HYDRANTS SHALL BE STRAPPED TO THE TEE & SHALL BE BUTTRESSED WITH CONCRETE IN ACCORDANCE WITH STANDARD DETAILS.
12. COST OF STRAPPING FIRE HYDRANTS & VALVES TO TEES TO BE INCLUDED IN UNIT PRICE BID FOR FURNISHING & LAVING OF WATER MAINS.



QUANTITIES	
ITEM	QUANTITY
8" SAN.	14,271 L.F.
10" SAN.	436 L.F.
SAN. MH.	73
SAN. DROP MH.	4
6" WATER	3125 L.F.
8" WATER	6730 L.F.
FIRE HYD.	14
12" WATER	1624 L.F.



<b>GREEN ASSOCIATES, INC.</b> CONSULTING ENGINEERS BALTIMORE, MARYLAND	<b>DEPARTMENT OF PUBLIC WORKS</b> HOWARD COUNTY, MARYLAND 2-16-73 DATE	<b>CONTRACT NO. 2488-D-W&amp;S</b> W. O. P. WATSON CHIEF - BUREAU OF WATER AND SEWER	<b>LOCATION MAP</b>	<b>COLUMBIA</b> <b>VILLAGE OF HICKORY RIDGE</b> SECTION I - AREA I ELECTION DISTRICT NO. 5	<b>DRAWING NO. 1 OF 9</b>	<b>SCALE 1" = 200'</b>
------------------------------------------------------------------------------	---------------------------------------------------------------------------------	--------------------------------------------------------------------------------------------	---------------------	-----------------------------------------------------------------------------------------------------	---------------------------	------------------------



*Robert A. O'Neil*

**GREEN ASSOCIATES, INC.**  
CONSULTING ENGINEERS  
BALTIMORE, MARYLAND

**DEPARTMENT OF PUBLIC WORKS**  
HOWARD COUNTY, MARYLAND  
2-16-73  
DATE

*W. O. Fallick*  
CHIEF - BUREAU OF WATER AND SEWER

CONTRACT NO. 2488-D-W&S

**PLAN OF**  
**WATER AND SEWER MAINS**

**COLUMBIA**  
**VILLAGE OF HICKORY RIDGE**  
SECTION I - AREA I  
ELECTION DISTRICT NO. 5

**DRAWING**  
NO. 2  
OF 9

**SCALE**  
1" = 50'

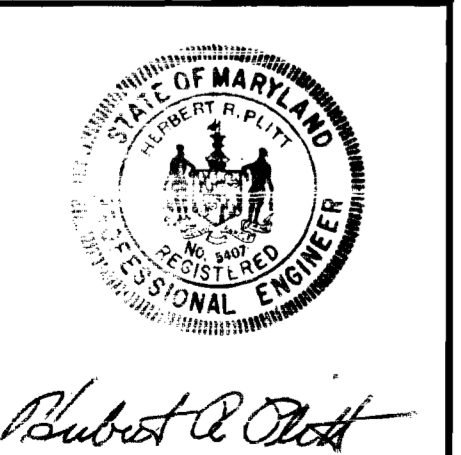
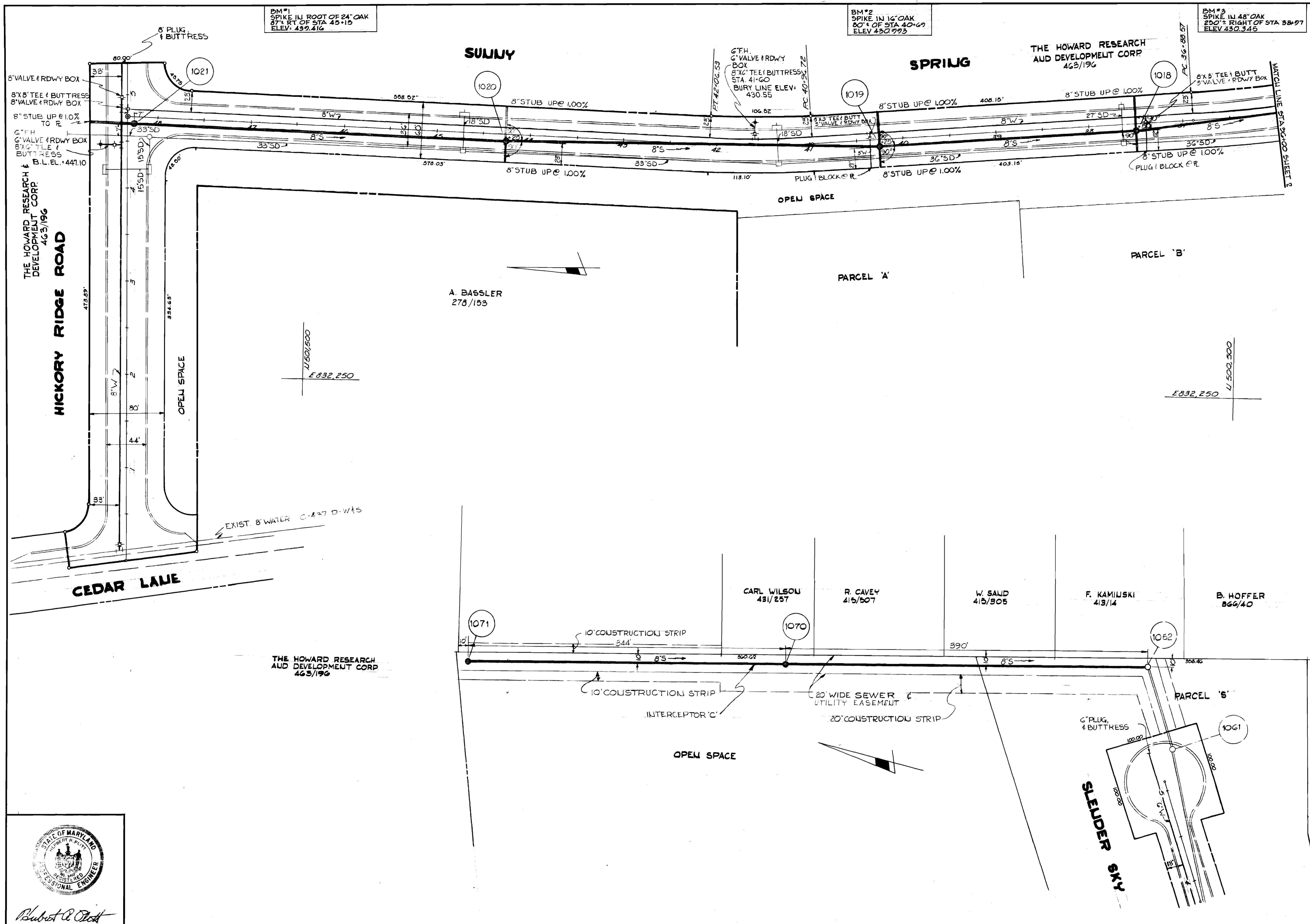
MAY 1, 1973

FOR PROFILE SEE SHEET B OF 9

BM #1  
SPIKE IN ROOT OF 24" OAK  
87' ± RT. OF STA. 45+15  
ELEV. 439.416

BM #2  
SPIKE IN 16" OAK  
80' ± OF STA. 40+69  
ELEV. 430.773

BM #3  
SPIKE IN 48" OAK  
250' ± RIGHT OF STA. 38+97  
ELEV. 430.345



**GREEN ASSOCIATES, INC.**  
CONSULTING ENGINEERS  
BALTIMORE, MARYLAND

**DEPARTMENT OF PUBLIC WORKS**  
HOWARD COUNTY, MARYLAND  
2-16-73  
DATE

CONTRACT NO. 2488-D-W&S

**PLAN OF WATER AND SEWER MAINS**

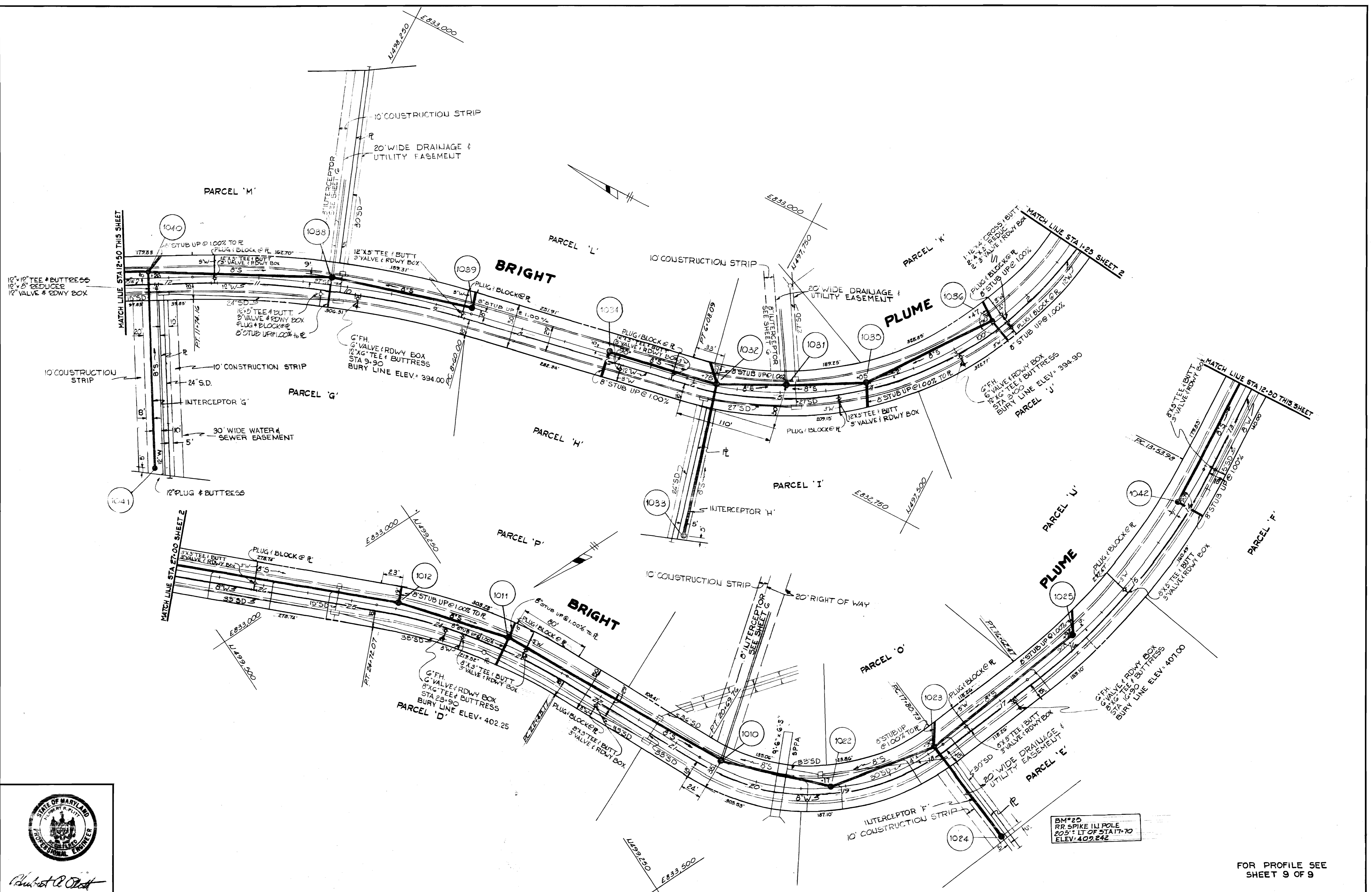
**COLUMBIA VILLAGE OF HICKORY RIDGE**  
ELECTION DISTRICT NO. 5  
SECTION I - AREA I

DRAWING NO. 3 OF 9  
SCALE 1"=50'

MAY 1, 1973

WS 488 wts/3

FOR PROFILE SEE SHEET 748 OF 9



BM#20  
RR SPIKE IN POLE  
205' LT OF STA 1+70  
ELEV: 402.242

FOR PROFILE SEE  
SHEET 9 OF 9



*Robert R. O'Neil*

**GREEN ASSOCIATES, INC.**  
CONSULTING ENGINEERS  
BALTIMORE, MARYLAND

**DEPARTMENT OF PUBLIC WORKS**  
HOWARD COUNTY, MARYLAND  
DATE: 2-16-73  
CHIEF - BUREAU OF WATER AND SEWER

CONTRACT NO2488-D-WBS

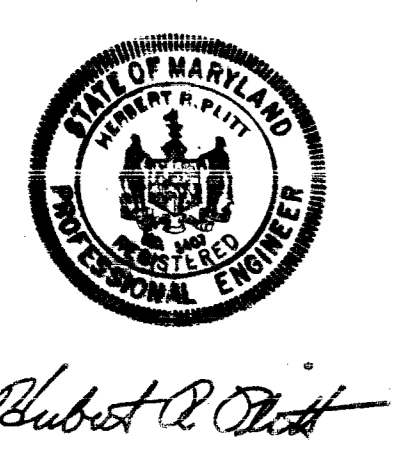
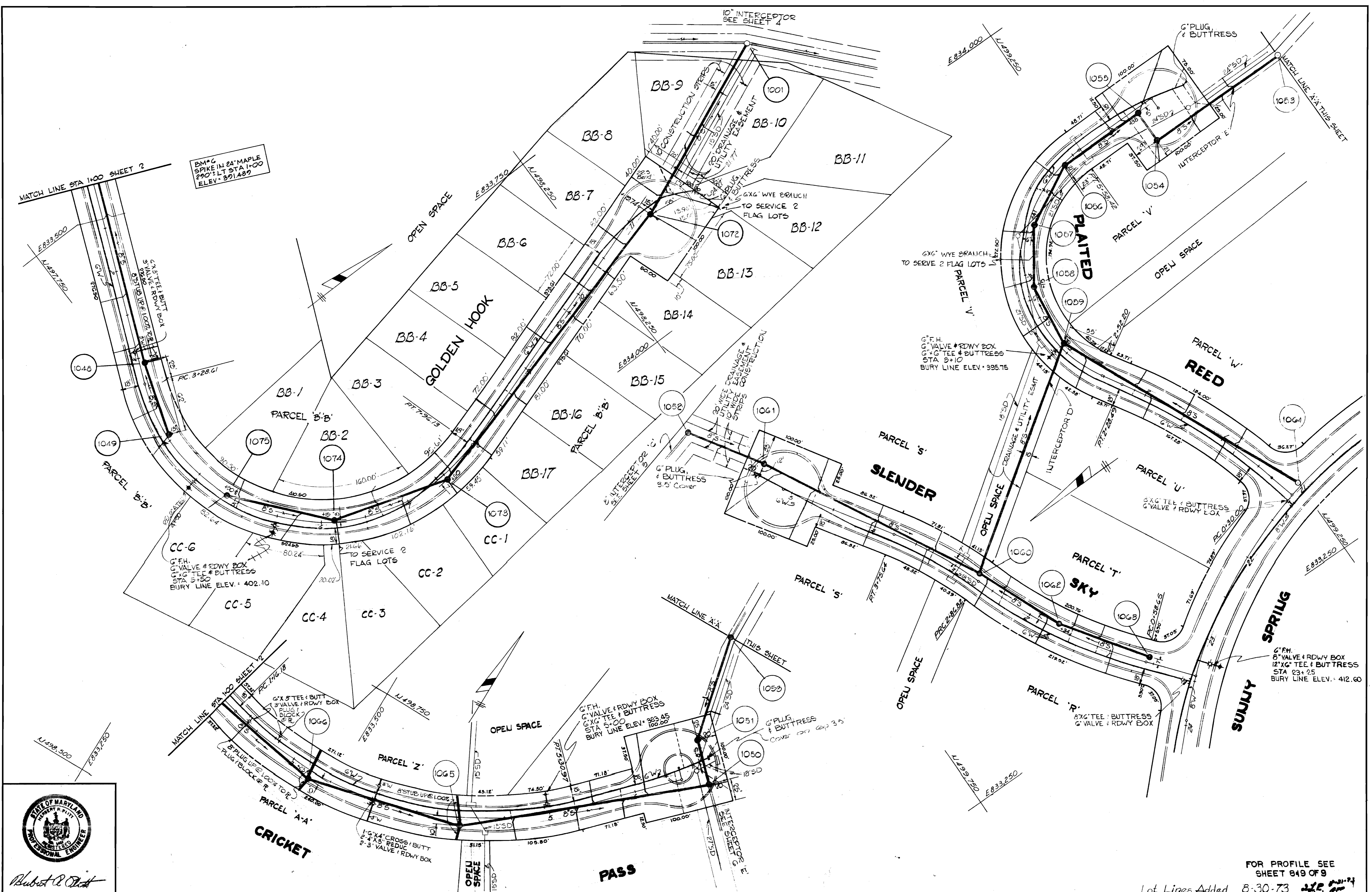
**PLAN OF  
WATER AND SEWER MAINS**

**COLUMBIA**  
**VILLAGE OF HICKORY RIDGE**  
SECTION I - AREA I  
ELECTION DISTRICT NO. 5

DRAWING NO. 4 OF 9  
SCALE 1"=50'

MAY 1, 1973

WS 488 wts/4



**GREEN ASSOCIATES, INC.**  
CONSULTING ENGINEERS  
BALTIMORE, MARYLAND

**DEPARTMENT OF PUBLIC WORKS**  
HOWARD COUNTY, MARYLAND  
2-16-73  
W. O. Falbert  
CHIEF - BUREAU OF WATER AND SEWER

CONTRACT NO. 2488-D-WBS

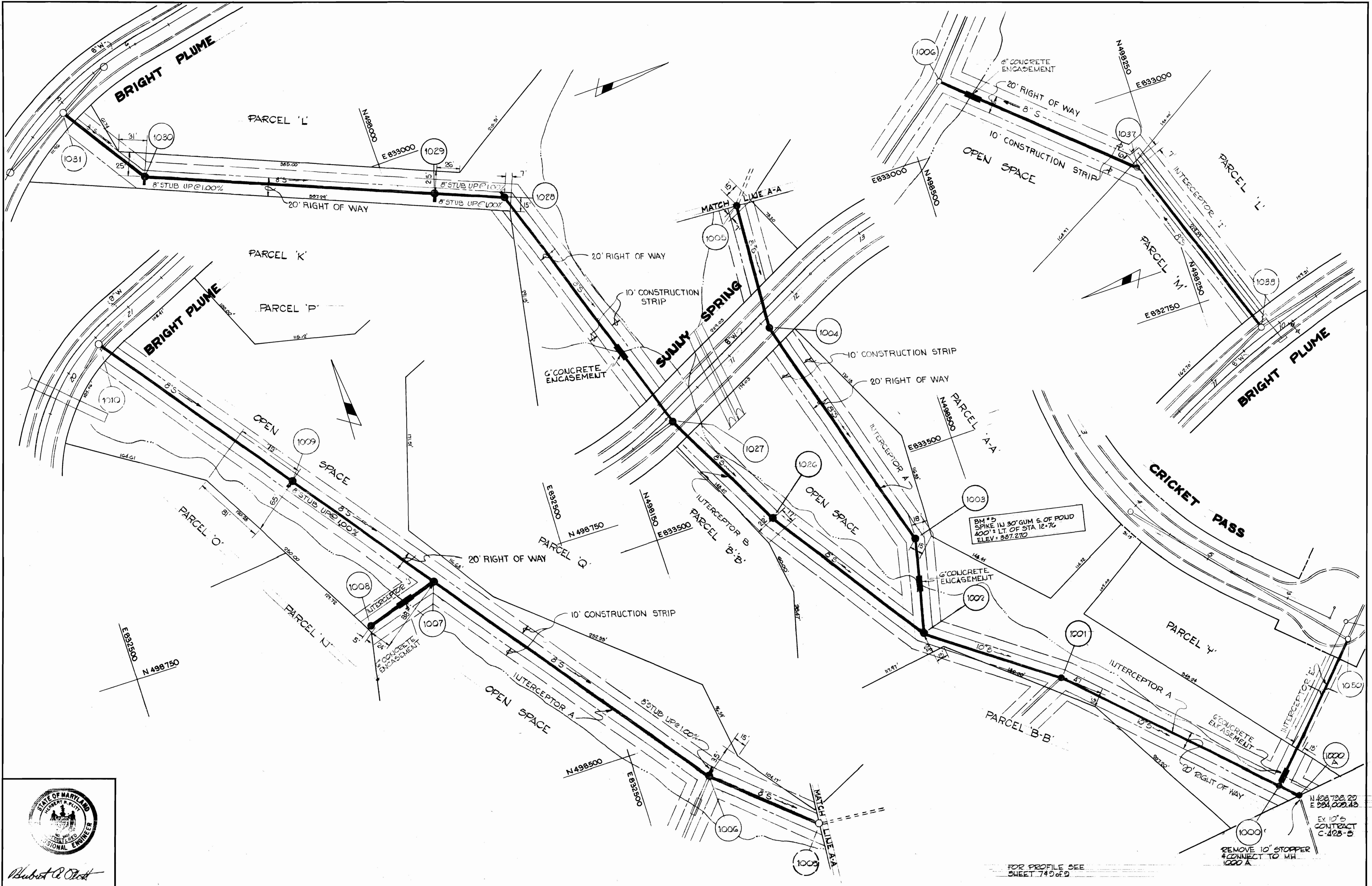
**PLAN OF WATER AND SEWER MAINS**

**COLUMBIA VILLAGE OF HICKORY RIDGE**  
SECTION I - AREA I  
ELECTION DISTRICT NO. 5

FOR PROFILE SEE SHEET 849 OF 9  
Lot Lines Added 8-30-73  
DRAWING NO. 5 OF 9  
SCALE 1" = 50'

As Built 8-17-73  
MAY 1, 1973

WS 488 W&S/5



10/25/73

10/25/73

WS 488 wbs/6

ALBERT R. O'LEARY  
PROFESSIONAL ENGINEER  
STATE OF MARYLAND  
HOWARD COUNTY

**GREEN ASSOCIATES, INC.**  
CONSULTING ENGINEERS  
BALTIMORE, MARYLAND

**DEPARTMENT OF PUBLIC WORKS**  
HOWARD COUNTY, MARYLAND  
DATE: 2-16-73  
*W. O. Falbert*  
CHIEF - BUREAU OF WATER AND SEWER

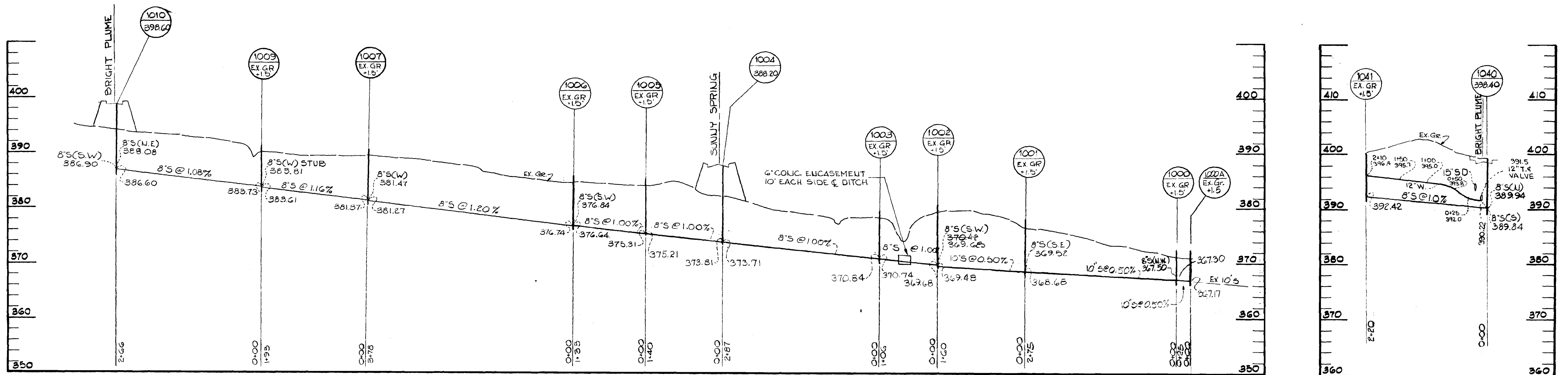
CONTRACT NO. 2488-D-WBS

**PLAN OF WATER AND SEWER MAINS**

**COLUMBIA VILLAGE OF HICKORY RIDGE**  
SECTION I - AREA I  
ELECTION DISTRICT NO. 5

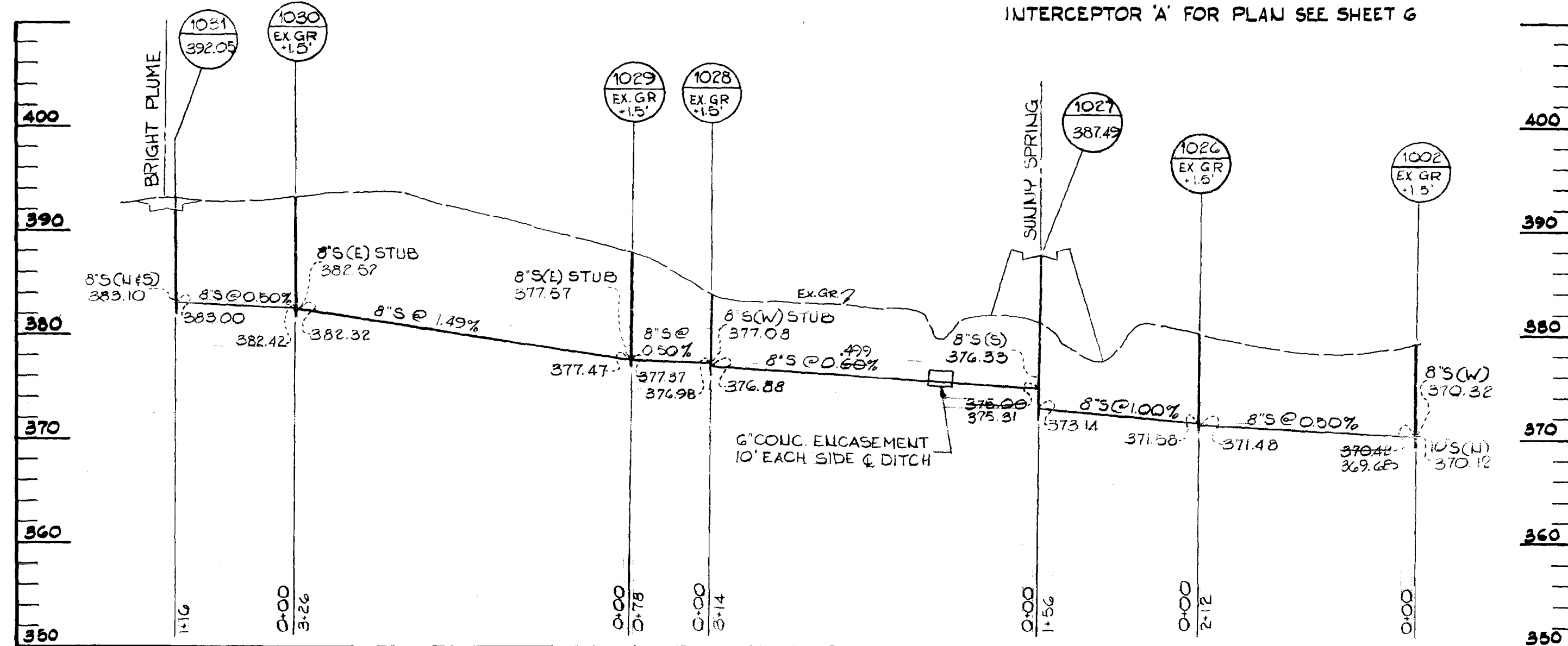
**DRAWING NO. 6 OF 9**  
SCALE: 1" = 50'

MAY 1, 1973

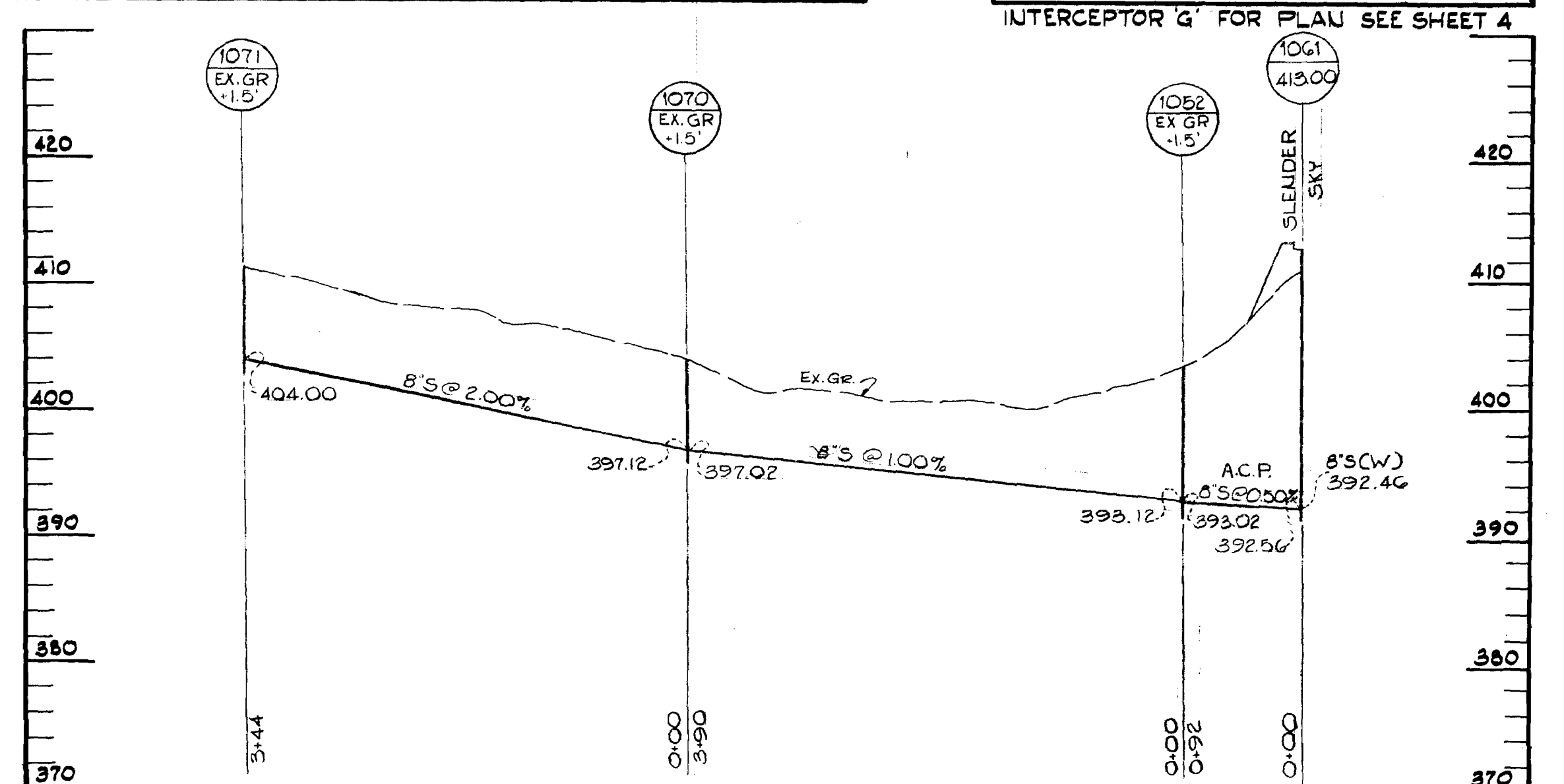


INTERCEPTOR 'A' FOR PLAN SEE SHEET G

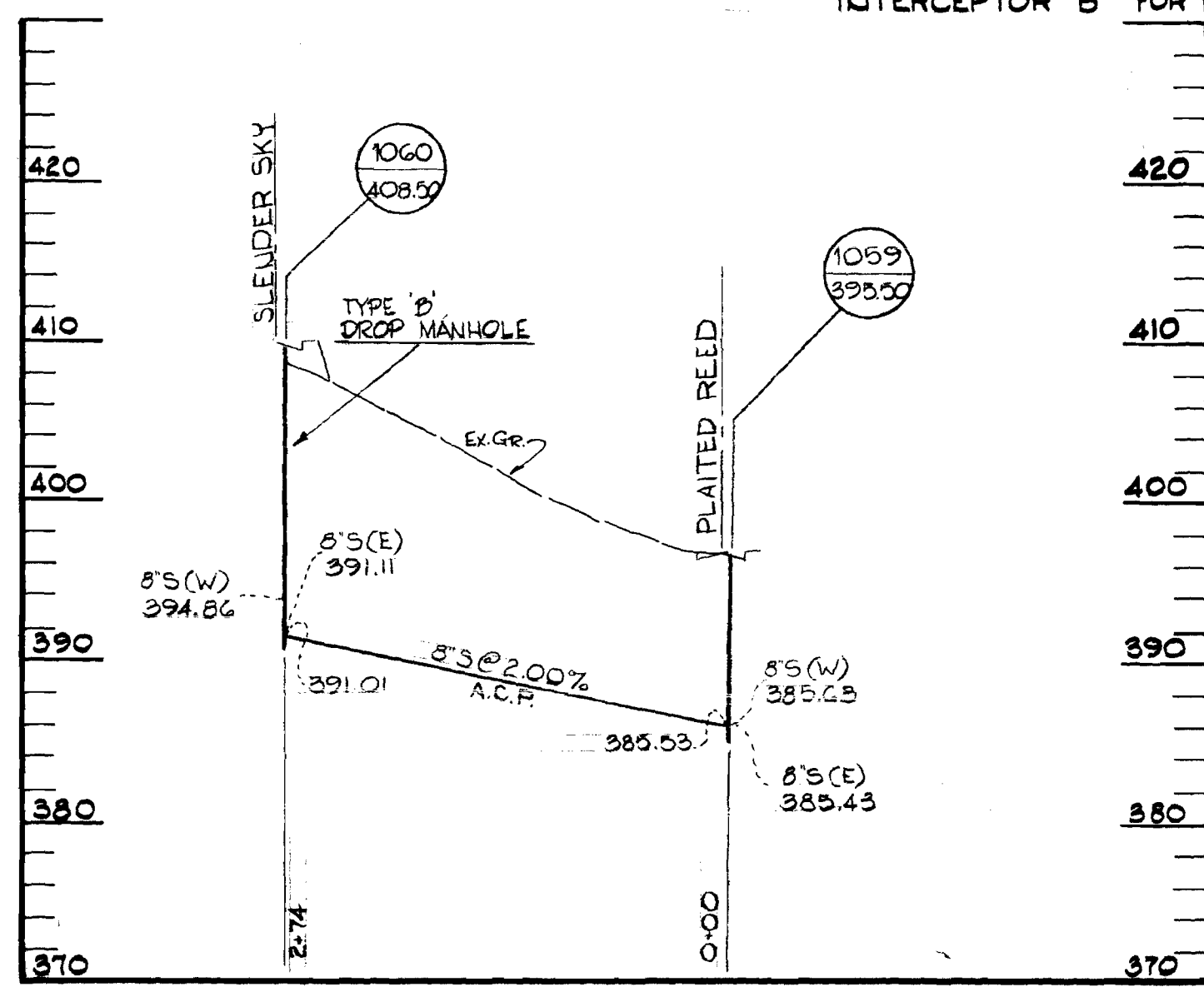
INTERCEPTOR 'G' FOR PLAN SEE SHEET 4



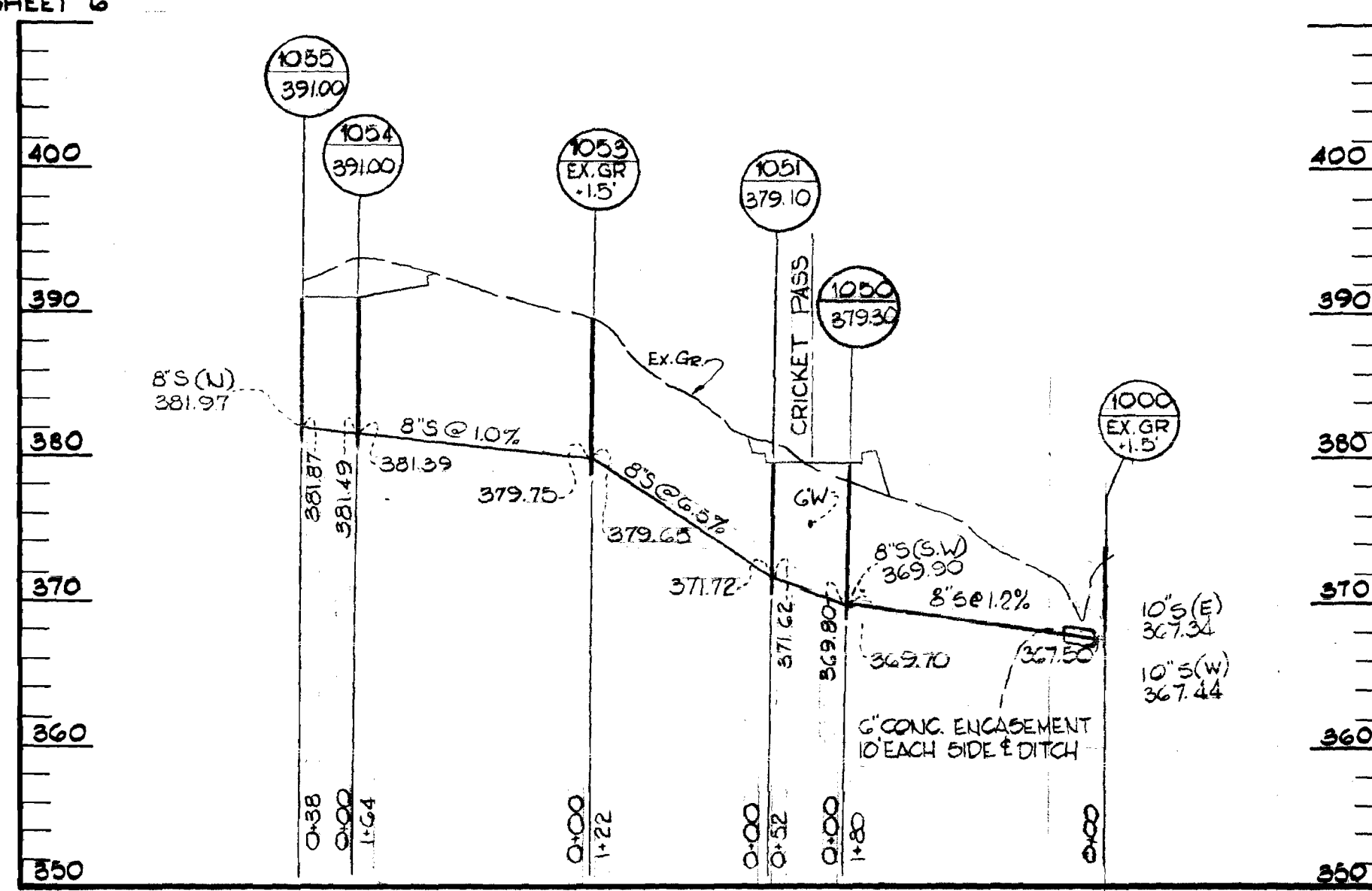
INTERCEPTOR 'B' FOR PLAN SEE SHEET G



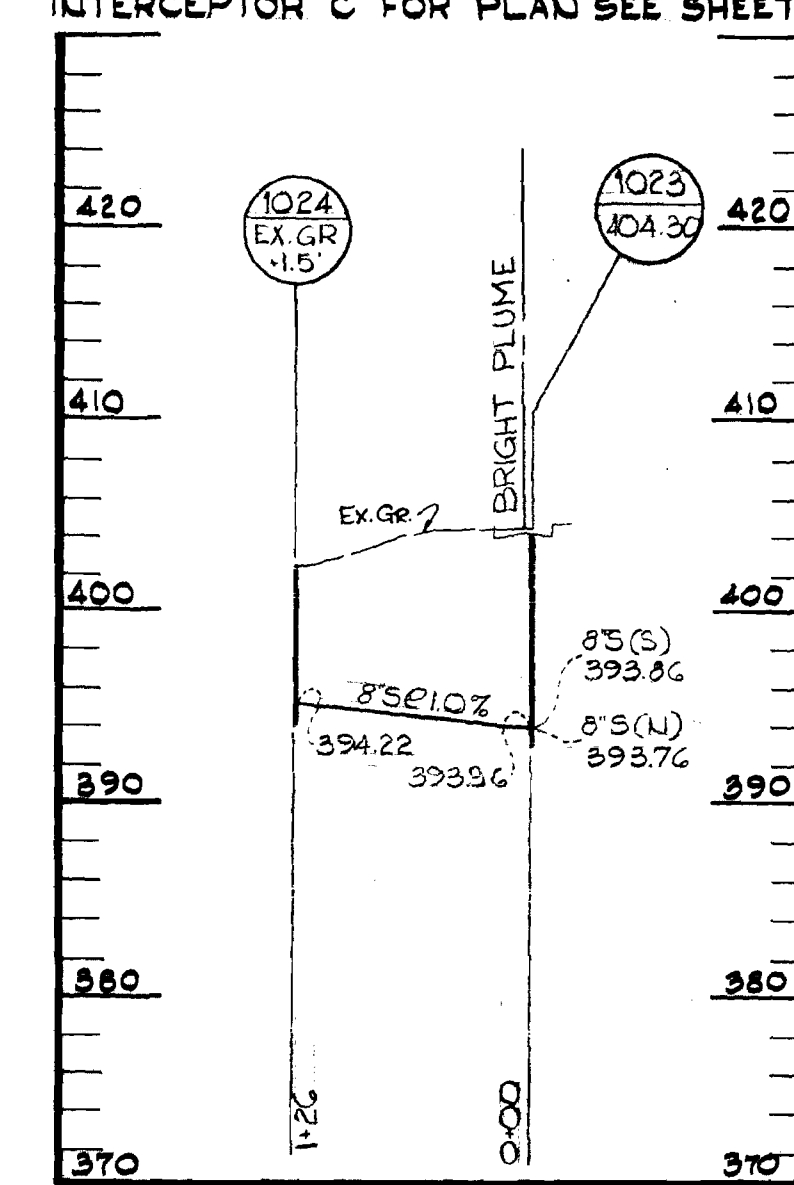
INTERCEPTOR 'C' FOR PLAN SEE SHEET 3



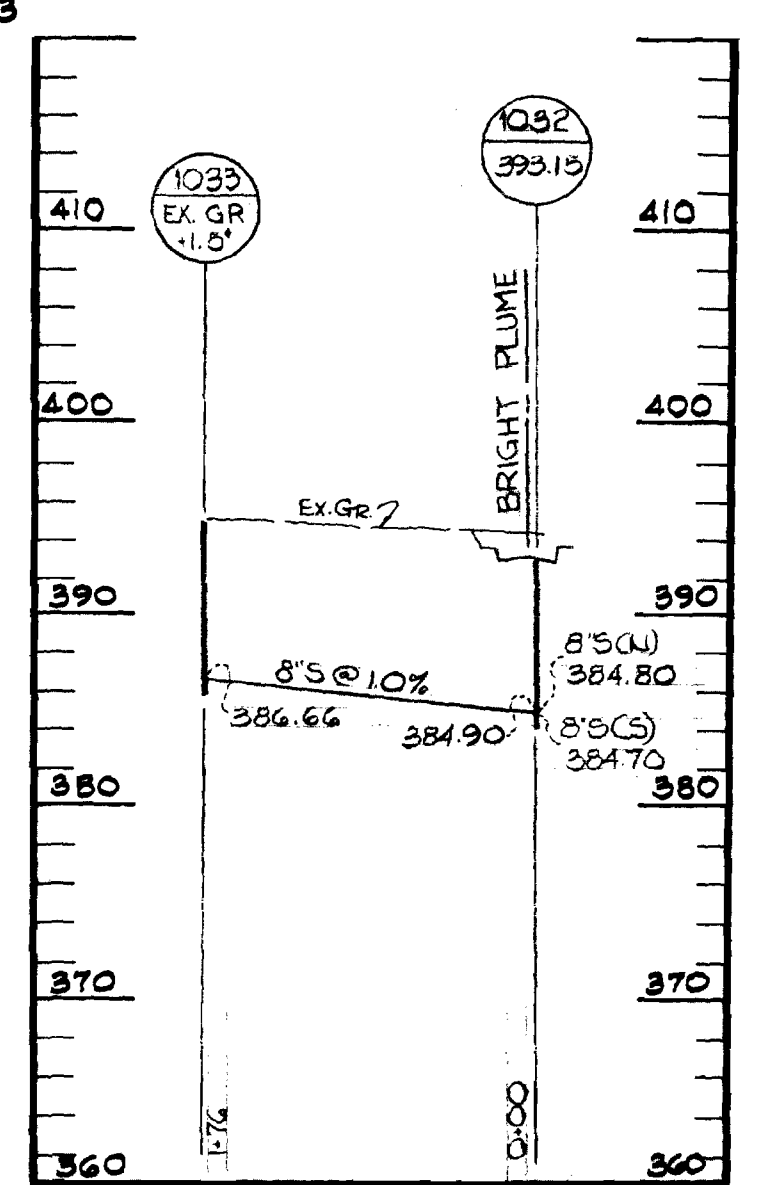
INTERCEPTOR 'D' FOR PLAN SEE SHEET D



INTERCEPTOR 'E' FOR PLAN SEE SHEET 516



INTERCEPTOR 'F' FOR PLAN SEE SHEET 4

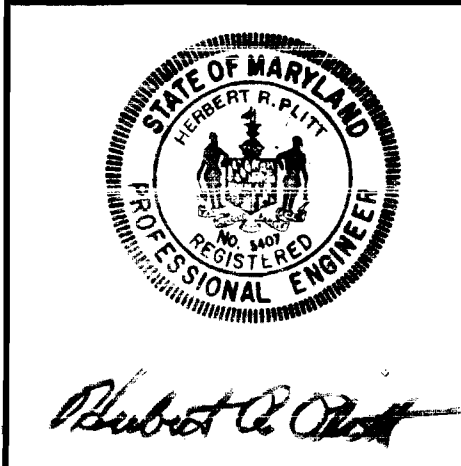
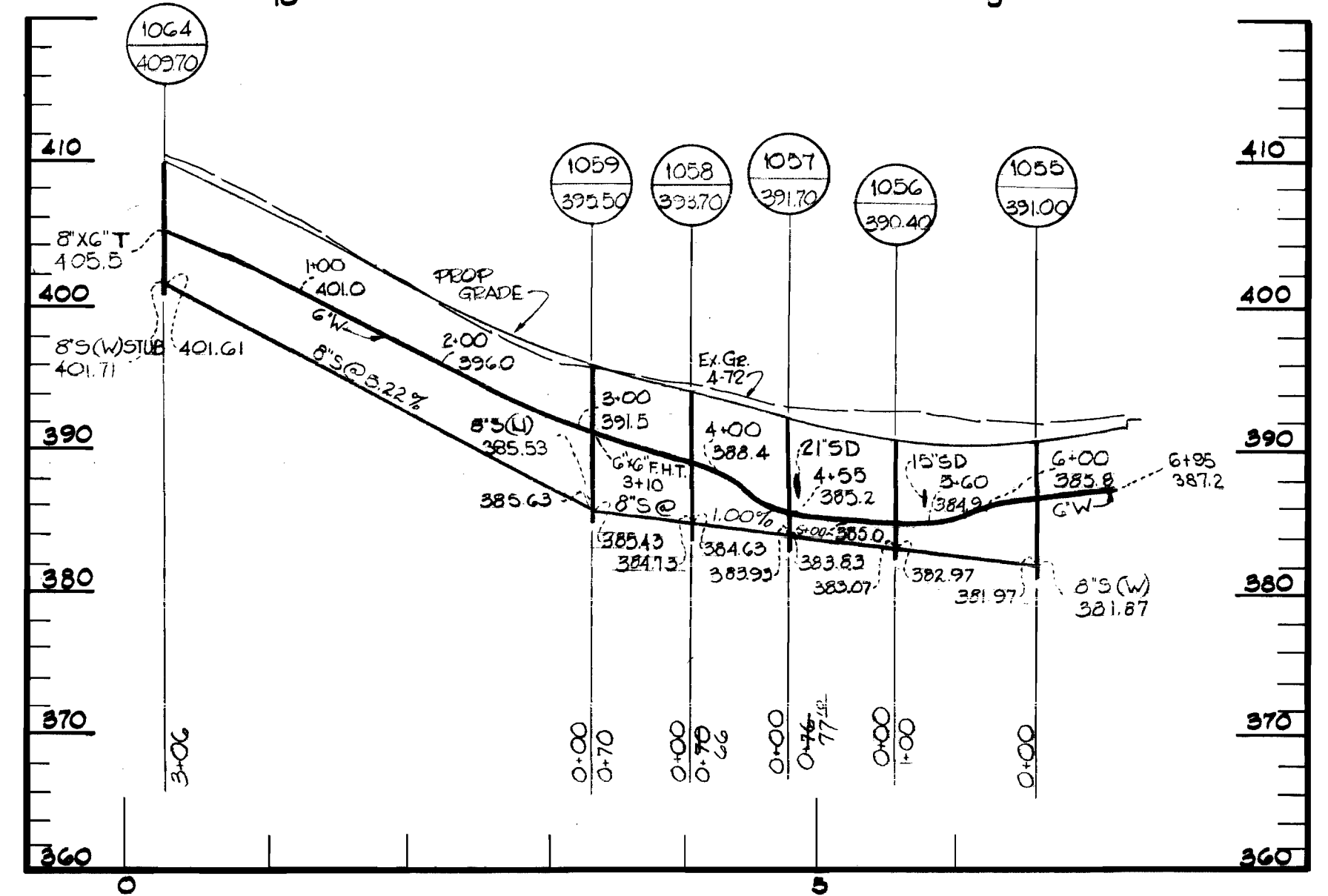
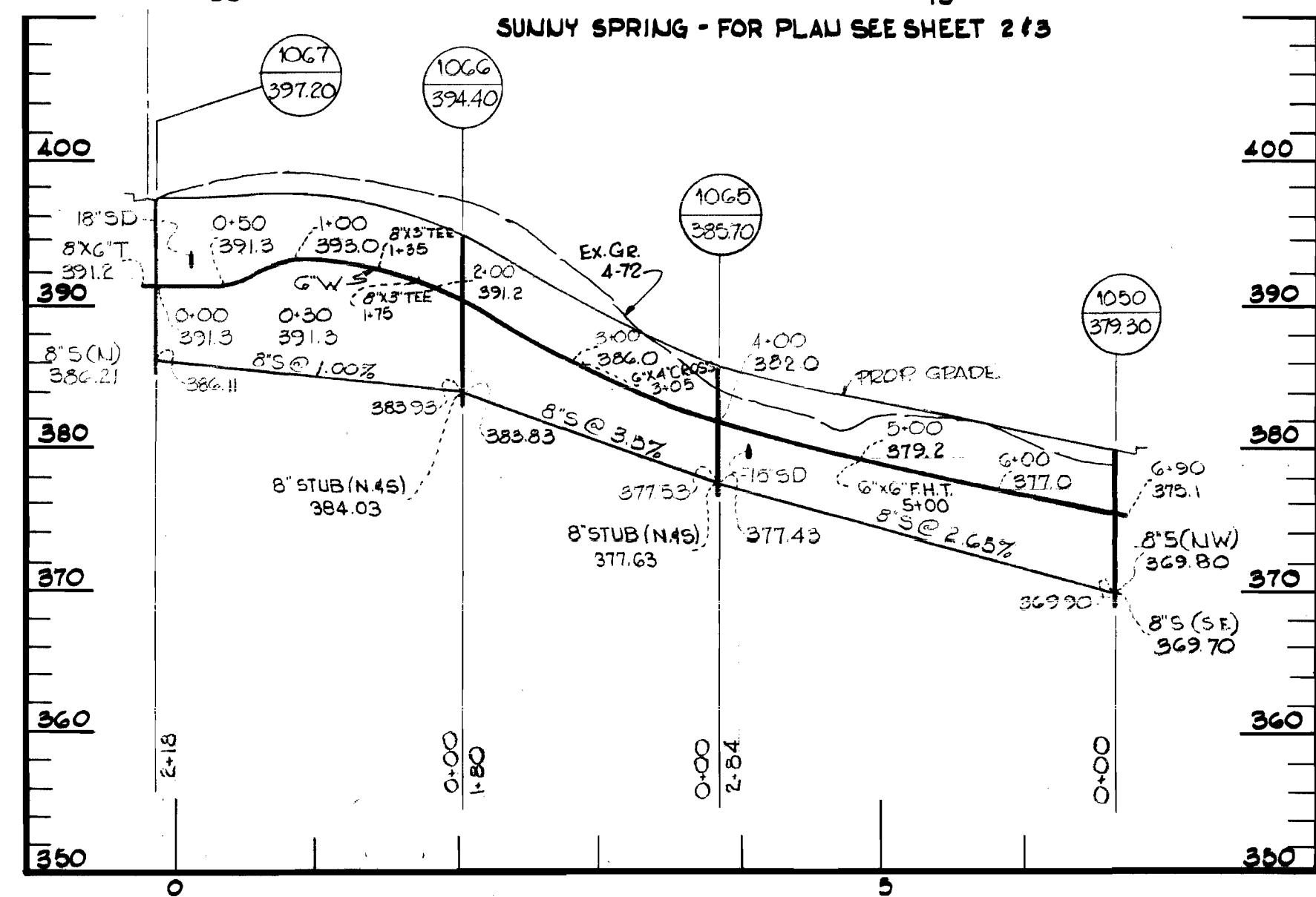
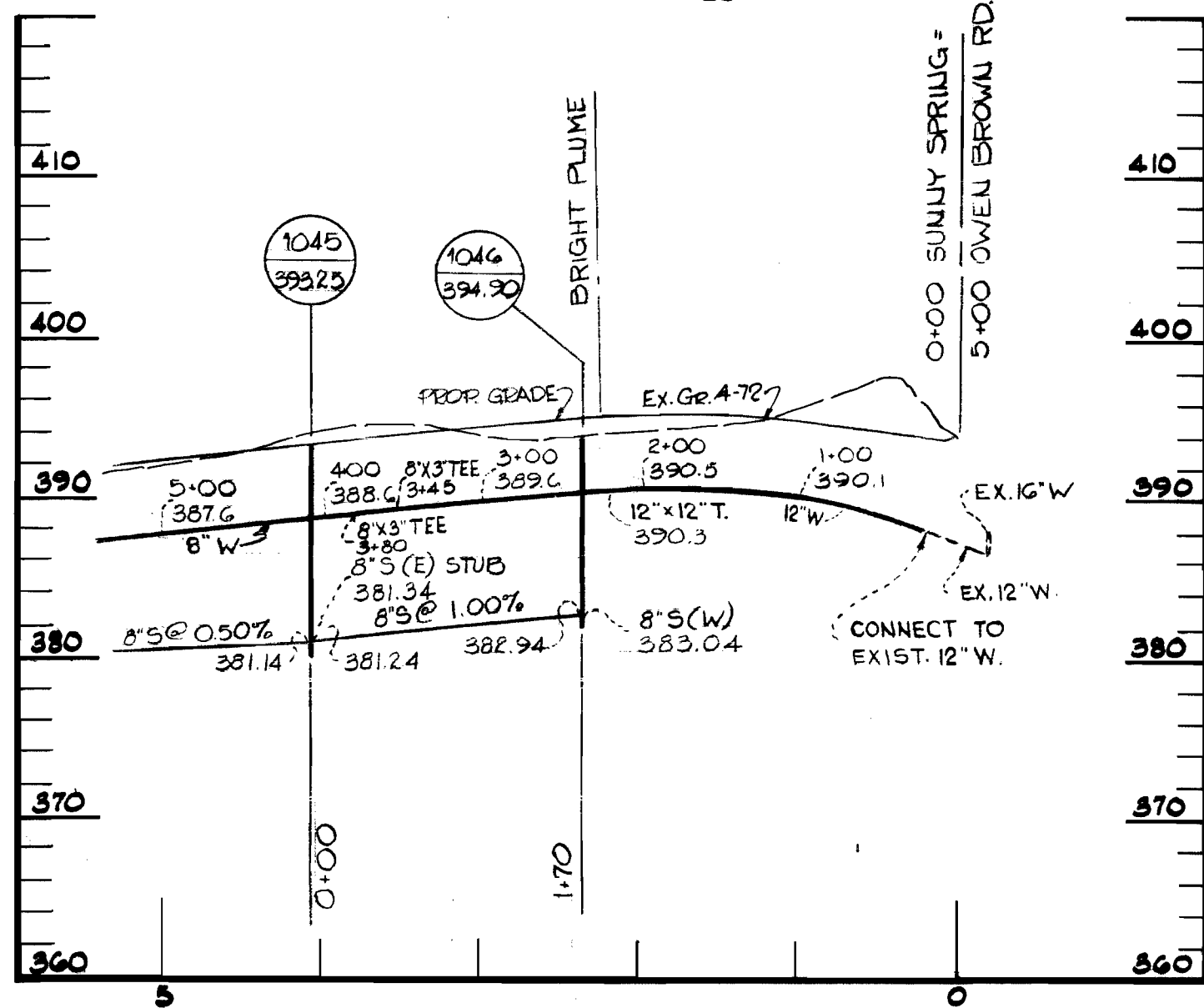
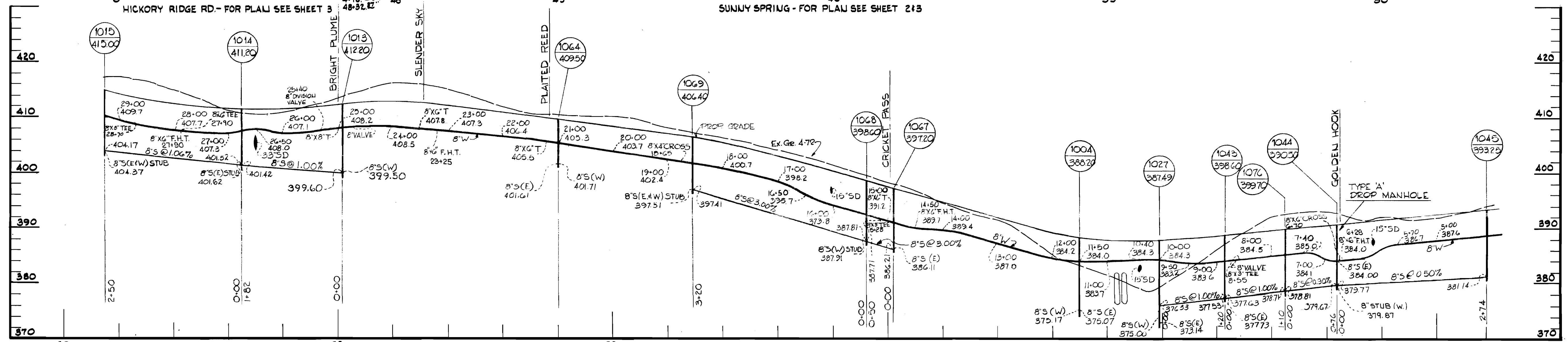
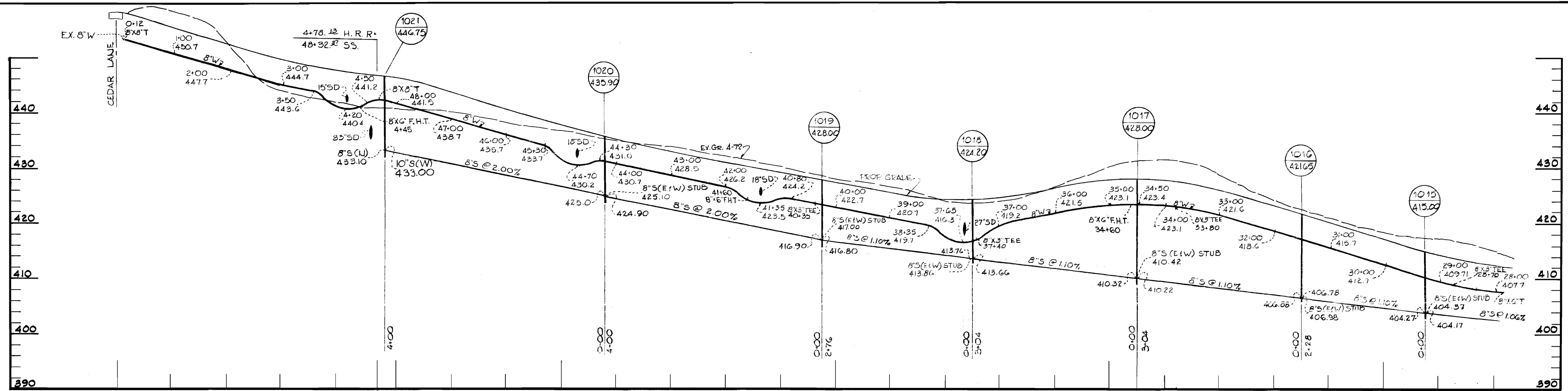


INTERCEPTOR 'H' FOR PLAN SEE SHEET 4



<p><b>GREEN ASSOCIATES, INC.</b> CONSULTING ENGINEERS BALTIMORE, MARYLAND</p>	<p><b>DEPARTMENT OF PUBLIC WORKS</b> HOWARD COUNTY, MARYLAND 2-16-73 W. O. Fabert CHIEF - BUREAU OF WATER AND SEWER</p>	<p>CONTRACT NO. 2488-D-W&amp;S</p>	<p><b>PROFILE OF WATER AND SEWER MAINS</b></p>	<p><b>COLUMBIA VILLAGE OF HICKORY RIDGE</b> SECTION 1 - AREA 1 ELECTION DISTRICT NO. 5</p>	<p>DRAWING NO. 7 OF 9 SCALE VERT. 1"=10' HORZ. 1"=400'</p>
---------------------------------------------------------------------------------------	-----------------------------------------------------------------------------------------------------------------------------------------	------------------------------------	------------------------------------------------	----------------------------------------------------------------------------------------------------	----------------------------------------------------------------

WS 488 - wfs/ab



GREEN ASSOCIATES, INC.  
CONSULTING ENGINEERS  
BALTIMORE, MARYLAND

DEPARTMENT OF PUBLIC WORKS  
HOWARD COUNTY, MARYLAND  
2-16-73  
DATE

CONTRACT NO. 2488-D-W85

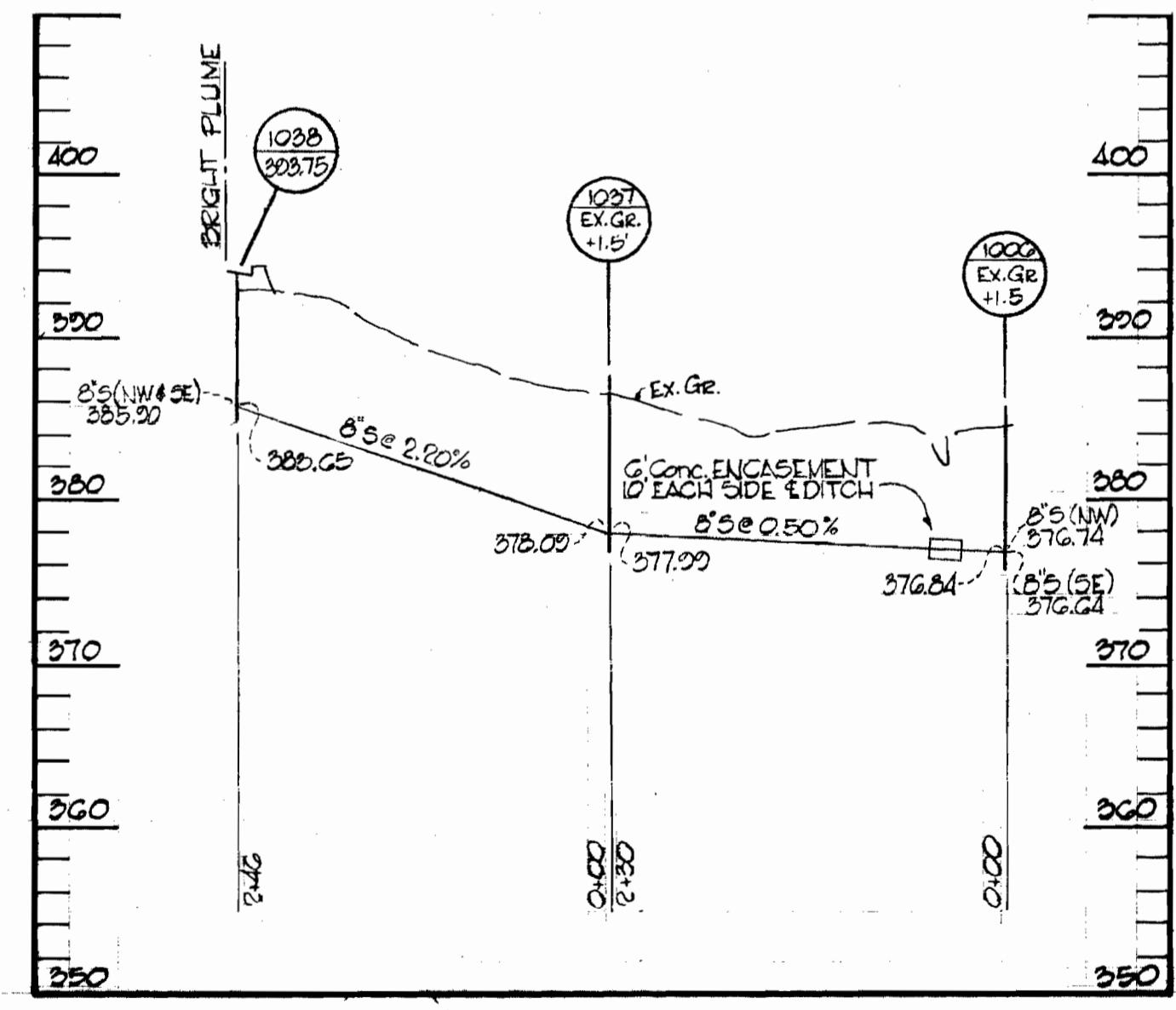
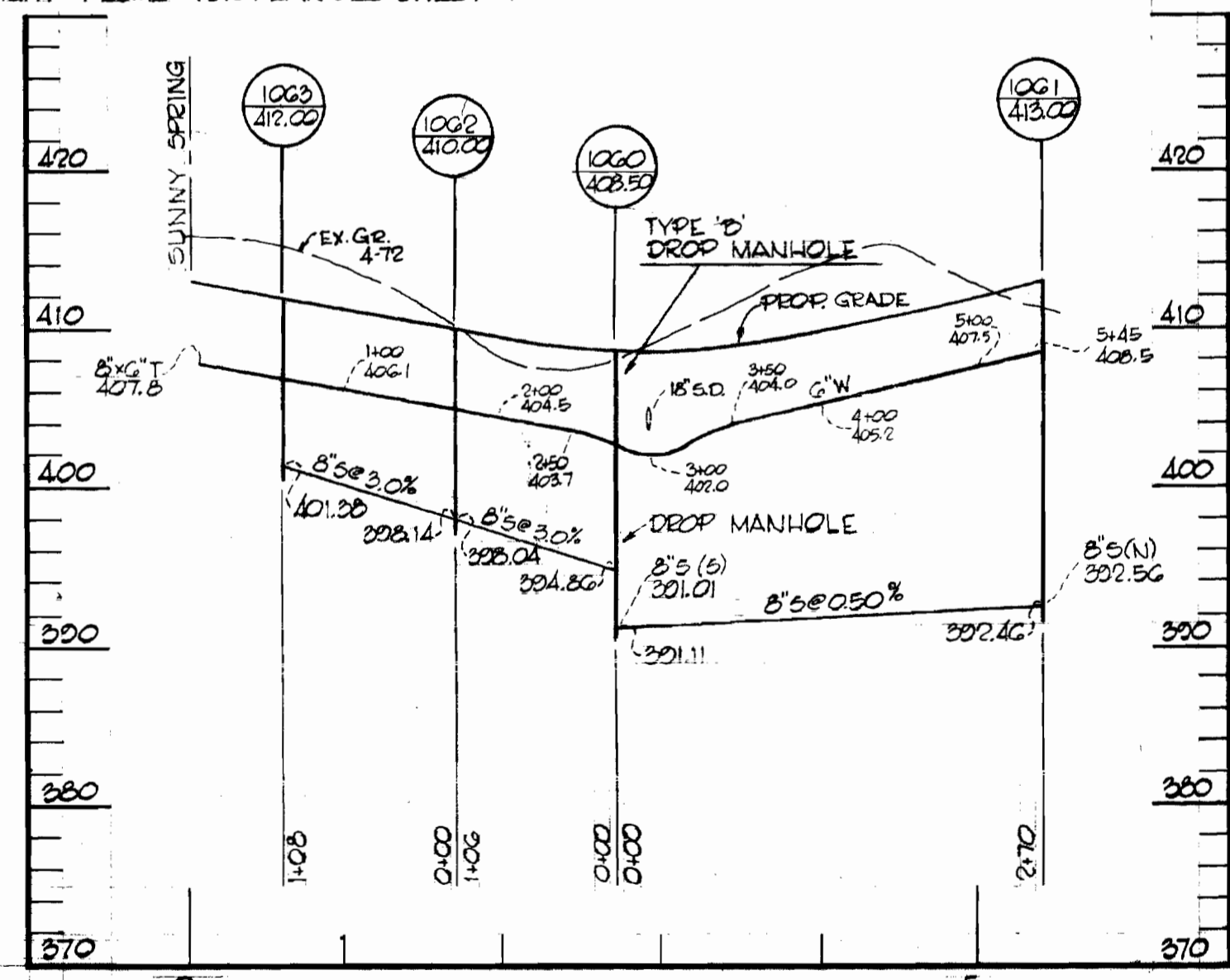
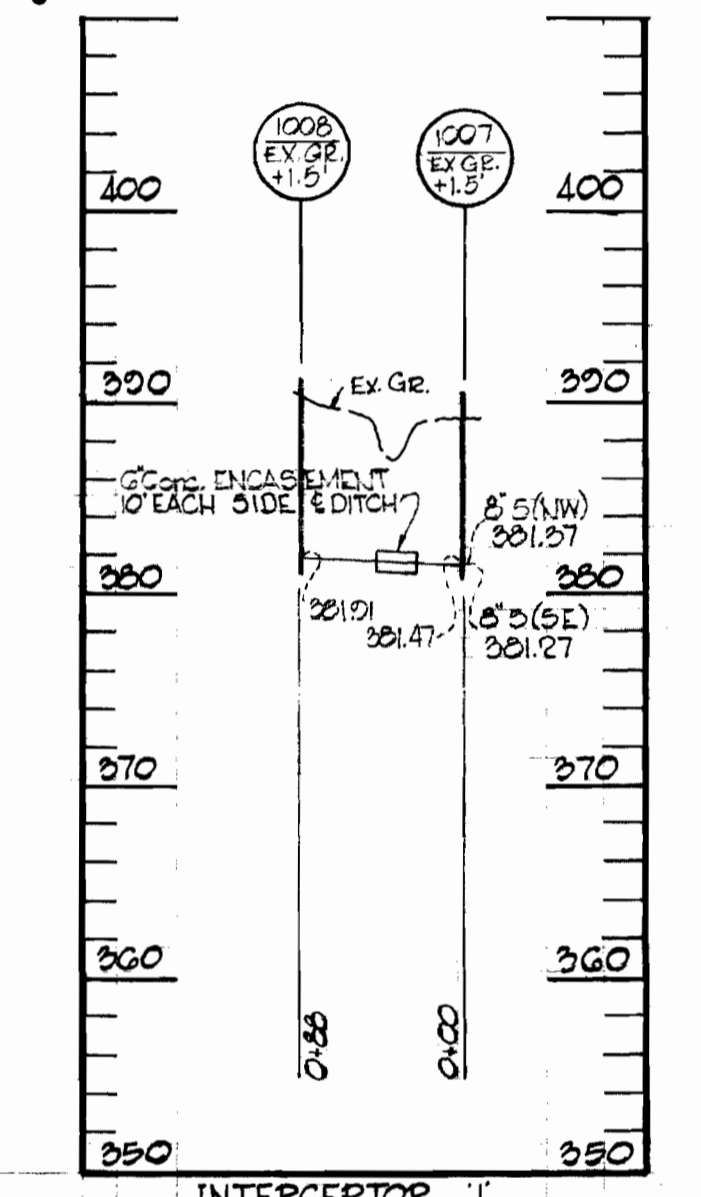
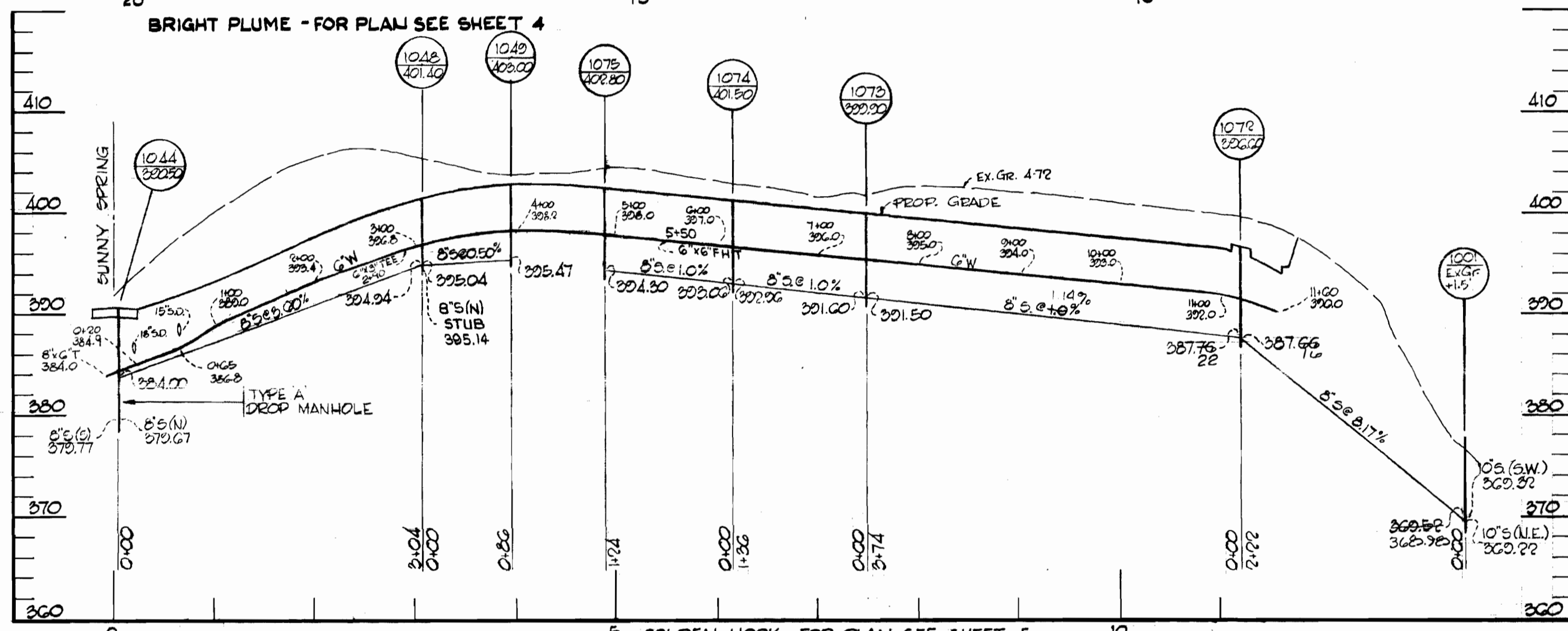
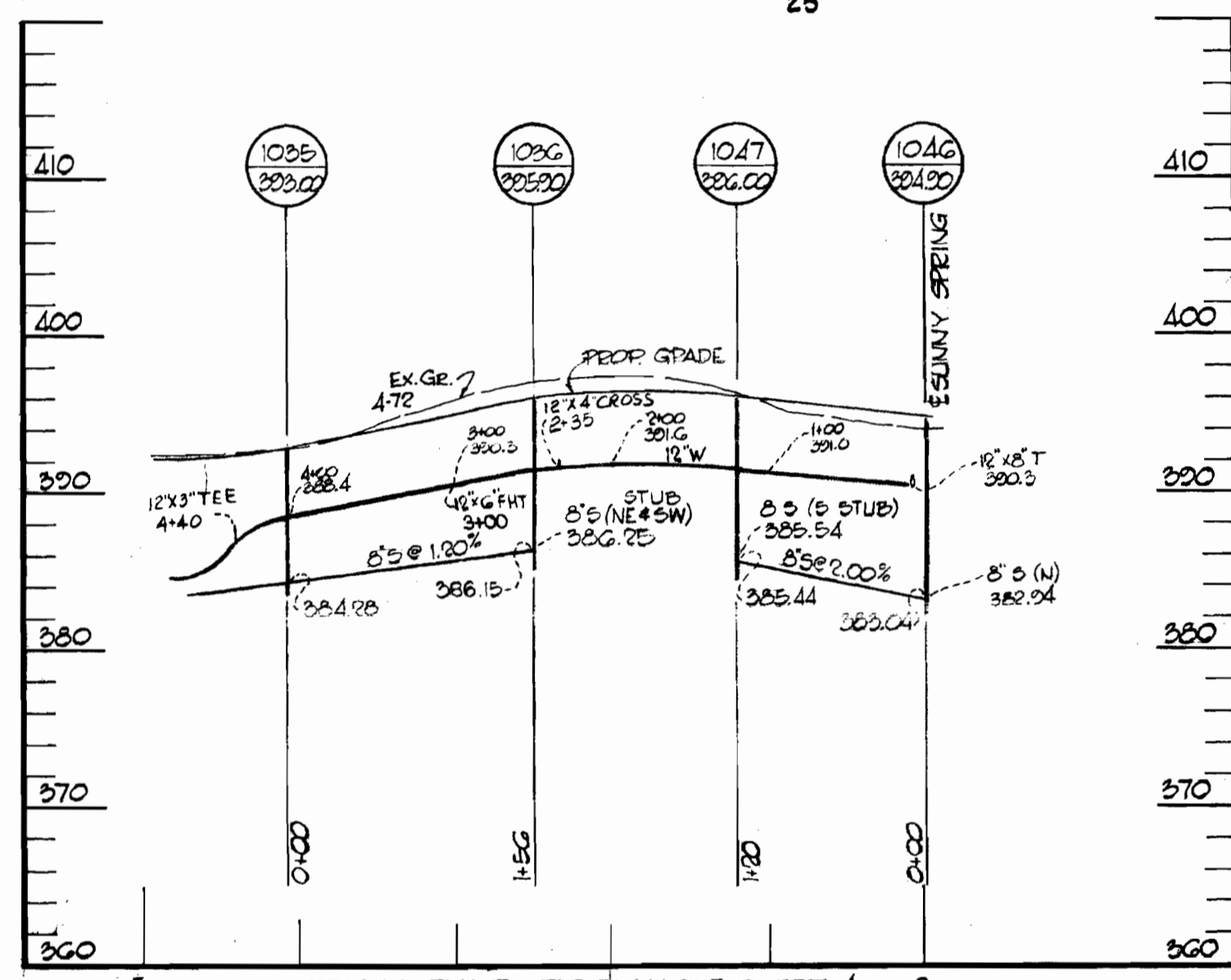
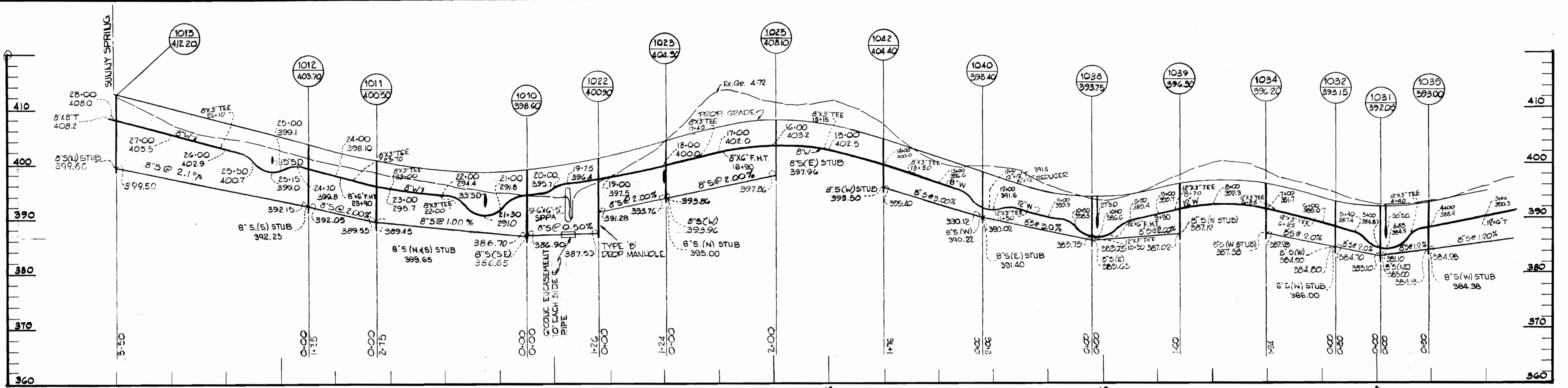
PROFILE OF  
WATER AND SEWER MAINS

COLUMBIA  
VILLAGE OF HICKORY RIDGE  
SECTION I - AREA I  
ELECTION DISTRICT NO. 5

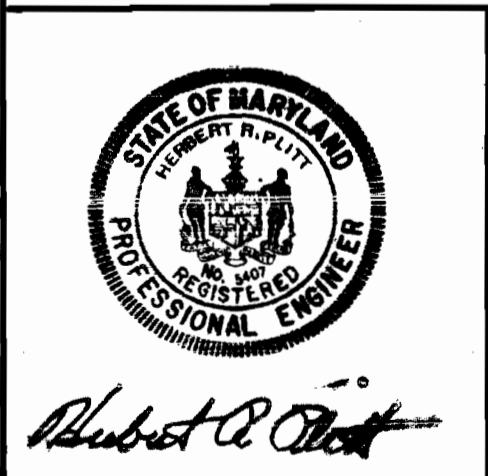
DRAWING  
NO. 8  
OF 9  
SCALE  
VERT. 1"=10'  
HORZ. 1"=100'

MAY 1, 1973





NOTE: 3" C.I.P. CLASS 22



**GREEN ASSOCIATES, INC.**  
CONSULTING ENGINEERS  
BALTIMORE, MARYLAND

**DEPARTMENT OF PUBLIC WORKS**  
HOWARD COUNTY, MARYLAND  
DATE: 2-16-73  
W. O. Falbert  
CHIEF - BUREAU OF WATER AND SEWER

CONTRACT NO. 2488-D-W&S

**PROFILE OF WATER AND SEWER MAINS**

**COLUMBIA VILLAGE OF HICKORY RIDGE**  
SECTION I - AREA I  
ELECTION DISTRICT NO. 5

DRAWING NO. 9 OF 9  
SCALE: VERT. 1"=10'  
HORZ. 1"=100'

MAY 1, 1973