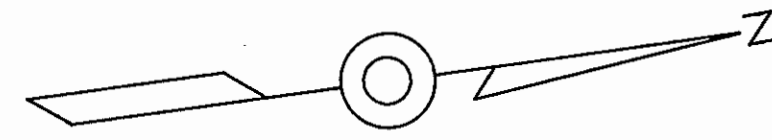


BENCH MARK No. 1
 X-CUT ON BOLT ON TRAFFIC STANDARD
 ELEV. 360.30

BENCH MARK No. 2
 X-CUT ON FLANGE BOLT ON FIRE HYDRANT
 ELEV. 352.46



BORING NO. 1

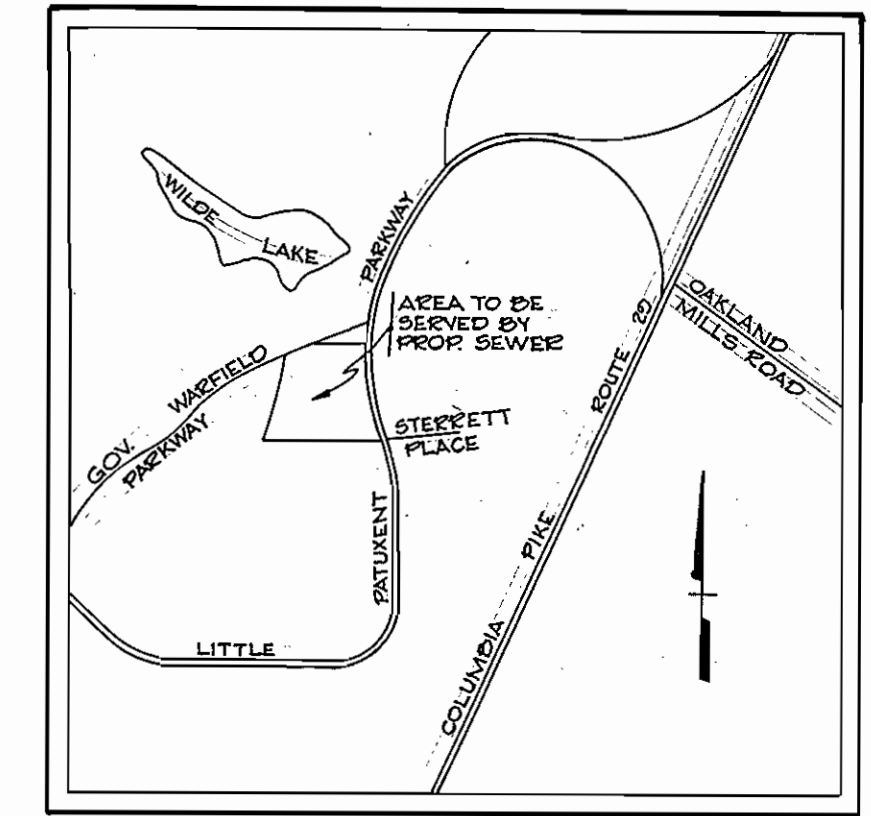
DEPTH	TYPE	DESCRIPTION
1'	+	Brown Moist Silty Fine Sand With Small Gravel
10'	+	Light Brown Moist Micaceous Fine Sandy Silt
12'	+	Light Brown Wet Micaceous Fine Sandy Silt

BORING NO. 2

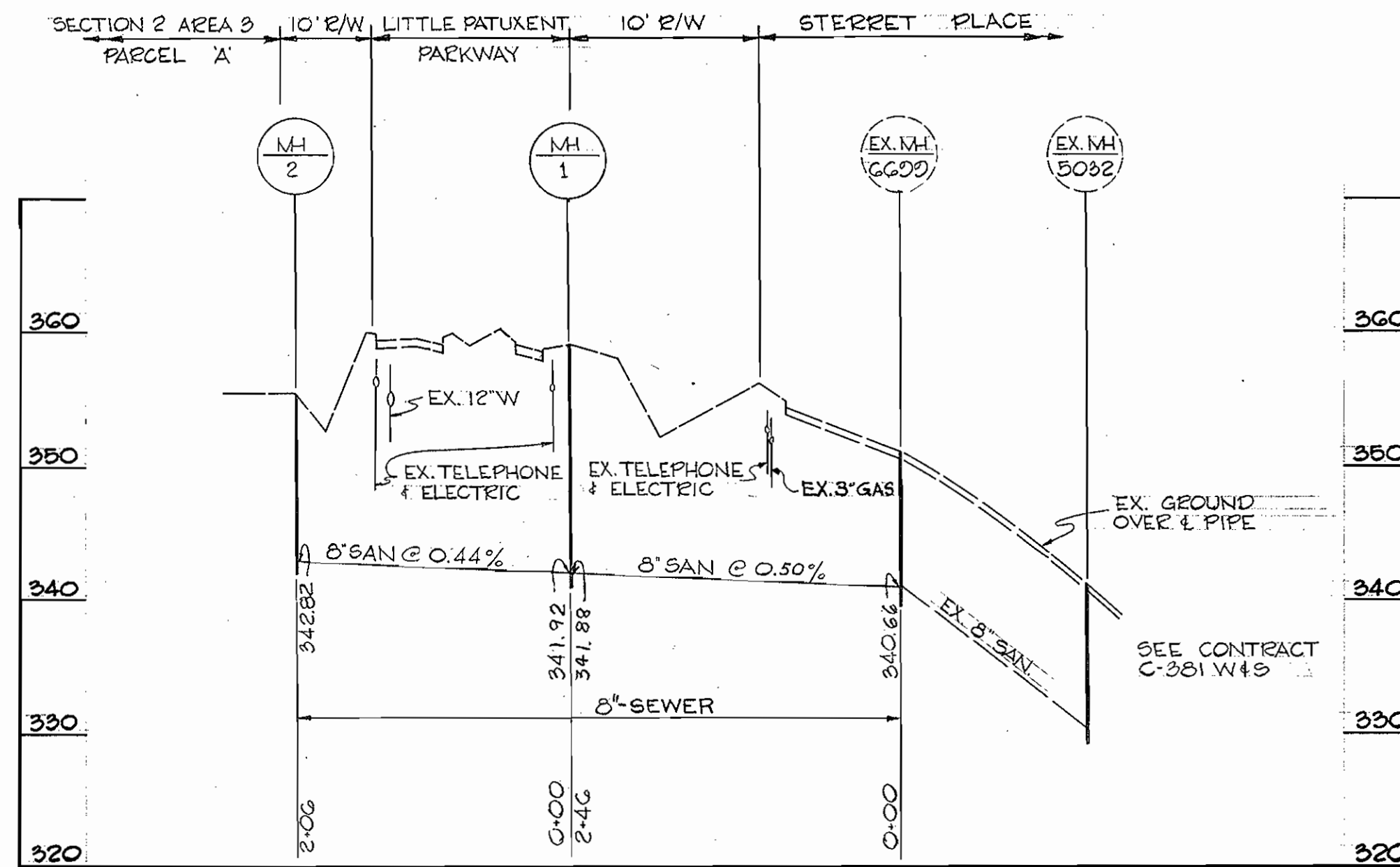
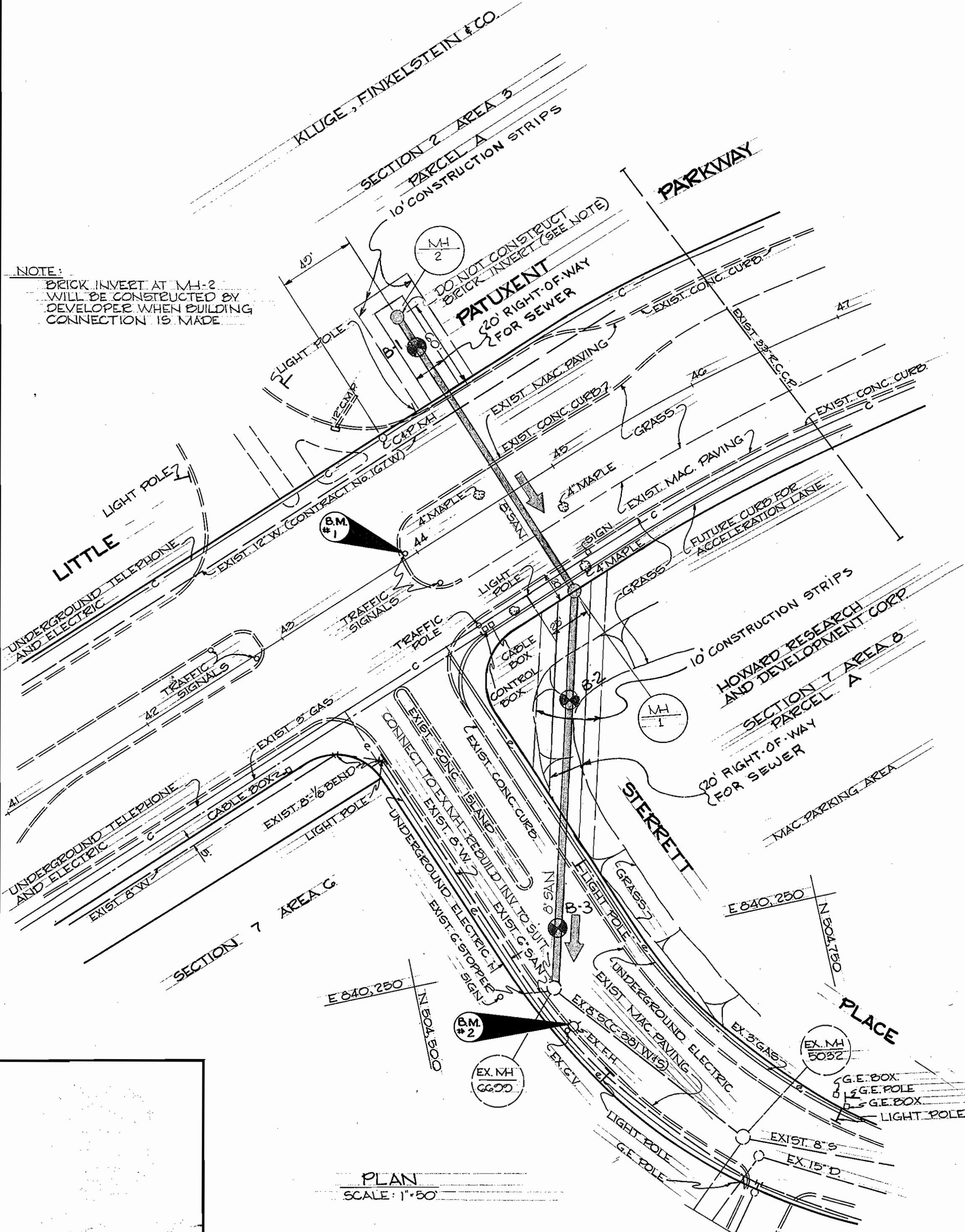
DEPTH	TYPE	DESCRIPTION
2'	+	Reddish Brown Moist Micaceous Clayey Fine Sandy Silt
12'	+	Light Brown Moist Micaceous Silty Fine Sand

BORING NO. 3

DEPTH	TYPE	DESCRIPTION
0'-4"	+	Asphalt Paving
1'-4"	+	Brown Dry Micaceous Silty Moist Sand with Small Gravel
12'	+	Reddish Brown Moist Fine Sandy Silt (Possible Fill)



VICINITY MAP
 SCALE: 1" = 2000'



PROFILE
 SCALE: 1" = 100' HORIZ
 1" = 10' VERT.

GENERAL NOTES

- APPROXIMATE LOCATION OF EXISTING MAINS IS SHOWN. THE CONTRACTOR SHALL TAKE ALL NECESSARY PRECAUTIONS TO PROTECT EXISTING MAINS AND SERVICE AND MAINTAIN UNINTERRUPTED SUPPLY. ANY DAMAGE INCURRED SHALL BE REPAIRED IMMEDIATELY.
- ALL PIPE ELEVATIONS SHOWN ARE INVERT ELEVATIONS.
- THE CONTRACTOR SHALL LOCATE EXISTING UTILITIES A MINIMUM OF TWO WEEKS IN ADVANCE OF CONSTRUCTION OPERATIONS IN VICINITY OF UTILITIES.
- CLEAR UTILITIES BY A MINIMUM OF 6" CLEAR ALL POLES BY 2'-0" MINIMUM, TUNNEL AS REQUIRED.
- THE CONTRACTOR SHALL PROVIDE A JOINT IN ALL SEWER MAINS WITHIN 2'-0" OF EXTERIOR MANHOLE WALLS.
- ALL MANHOLES SHALL BE PRECAST CONCRETE WITH 4'-0" INSIDE DIAMETER.
- ALL CONCRETE SHALL BE CLASS 'A' MADE WITH HIGH EARLY STRENGTH CEMENT.
- ALL OPENINGS IN EXISTING ROADWAYS SHALL BE REPAIRED IN ACCORDANCE WITH HOWARD COUNTY STANDARD DETAIL R-41.
- ALL EXPOSED EDGES OF EXISTING BITUMINOUS SURFACE COURSE AND SURFACE OF CONCRETE BASE COURSE SHALL BE PRIMED WITH A MATERIAL SATISFACTORY TO THE ENGINEER BEFORE THE BITUMINOUS MATERIAL IS PLACED.
- CONTRACTOR SHALL INSTALL THE PROPOSED SEWER CROSSING LITTLE PATUXENT PARKWAY, BY TUNNELLING UNDER EXISTING CURBS.
- ALL HORIZONTAL AND VERTICAL CONTROLS ARE BASED ON MARYLAND STATE DATUM.

QUANTITIES

444 LIN. FT. - 8" SANITARY SEWER

TOWN CENTER
 SECTION 2 AREA 3
 CONTRACT No. C-2484-D15

GREEN ASSOCIATES, INC.
 CONSULTING ENGINEERS
 BALTIMORE, MARYLAND

DEPARTMENT OF PUBLIC WORKS
 HOWARD COUNTY, MARYLAND
 11-1-73
 DATE

CONTRACT NO. 2484 D&S

PLAN & PROFILES OF
 SEWER MAINS

COLUMBIA
 TOWN CENTER
 ELECTION DISTRICT CLARKSVILLE NO.5

DRAWING NO. 1 OF 1 SCALE AS SHOWN