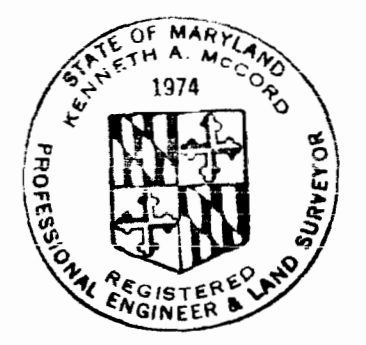


VICINITY MAP
Scale: 1" = 600'

GENERAL NOTES

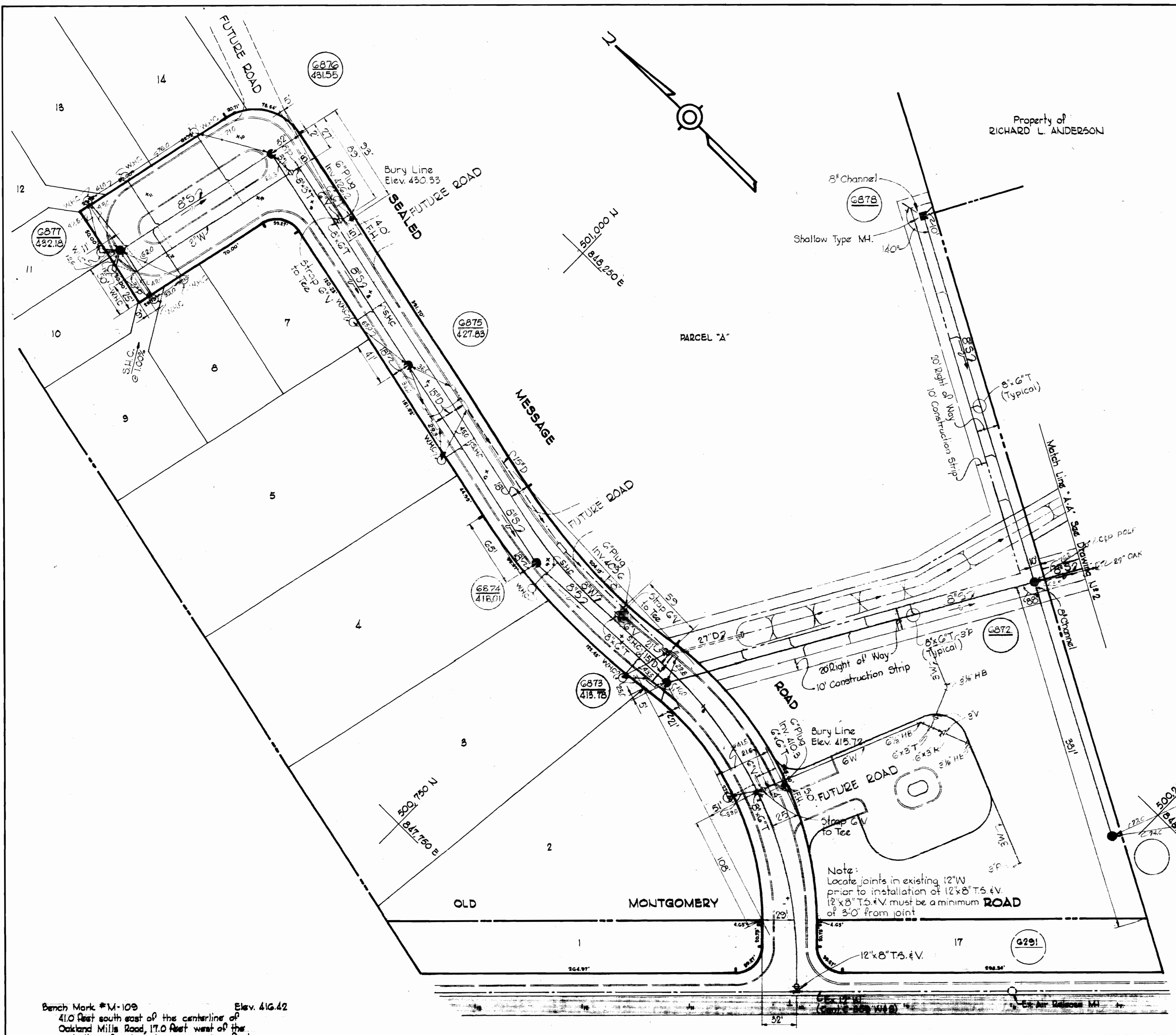
1. Approximate location of existing mains are shown. The Contractor shall take all necessary precautions to protect existing mains and services and maintain uninterrupted supply. Any damage incurred shall be repaired immediately.
2. All pipe elevations shown are invert elevations.
3. The Contractor shall locate all existing utilities a minimum of two weeks in advance of construction operations in vicinity of utilities.
4. For all standard details see standards bound in Specifications.
5. Clear all utilities by a minimum of 6', clear all poles by 2'-0" minimum or tunnel as required.
6. The Contractor shall provide a joint in all sewer mains within 2'-0" of exterior manhole walls.
7. All manholes shall be 4'-0" inside diameter.
8. All water mains to have a minimum of 3/2' cover unless otherwise noted.
9. Block all fittings with concrete, see standards bound in Specifications.
10. Bury line elevations on Fire Hydrants shall be set to the elevations shown on the drawings.
11. All Fire Hydrants shall be strapped to the tee and shall be buttressed with concrete in accordance with standard details.
12. All horizontal and vertical controls are based on Maryland State Datum.

QUANTITIES	
8" Sewer	2,280'
8" Water	920'
6" Water	65'
3" Water	190'
Fire Hydrants	2



Kenneth A. McLeod

Village of Longreach
Section 1, Area G
Contract No. 481 D-W#5



Note:
Locate joints in existing 12" W prior to installation of 12" x 8" T.S. & V.
12" x 8" T.S. & V. must be a minimum of 3'-0" from joint

Bench Mark #M-109 Elev. 416.42
41.0 feet south east of the centerline of Oakland Mills Road, 17.0 feet west of the centerline of Old Montgomery Road, 5.0 feet south of pole #24145, 2.0 feet north east of a metal witness post, set in a concrete post projecting 2 inches.

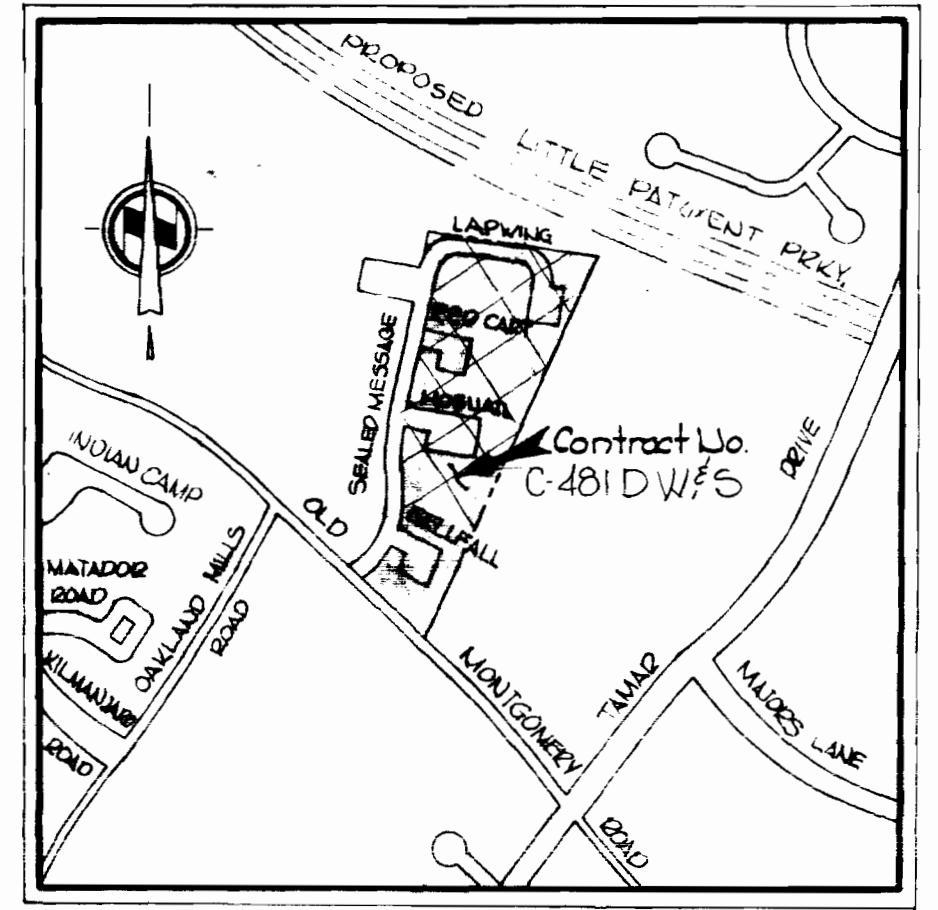
PLAN
Scale: 1" = 50'

WHITMAN, REQUARDT & ASSOCIATES ENGINEERS 1304 ST. PAUL ST. BALTIMORE, MARYLAND	DEPARTMENT OF PUBLIC WORKS HOWARD COUNTY, MARYLAND 6-22-72 DATE	CHIEF - BUREAU OF WATER AND SEWER <i>W. O. G575</i>	CONTRACT NO. 481-D W#5	PLAN OF WATER & SEWER MAINS	COLUMBIA VILLAGE OF LONGREACH ELECTION DISTRICT GULFORD NO. 6	DRAWING NO. 1 OF 24 AS SHOWN

WS 481 WBS/

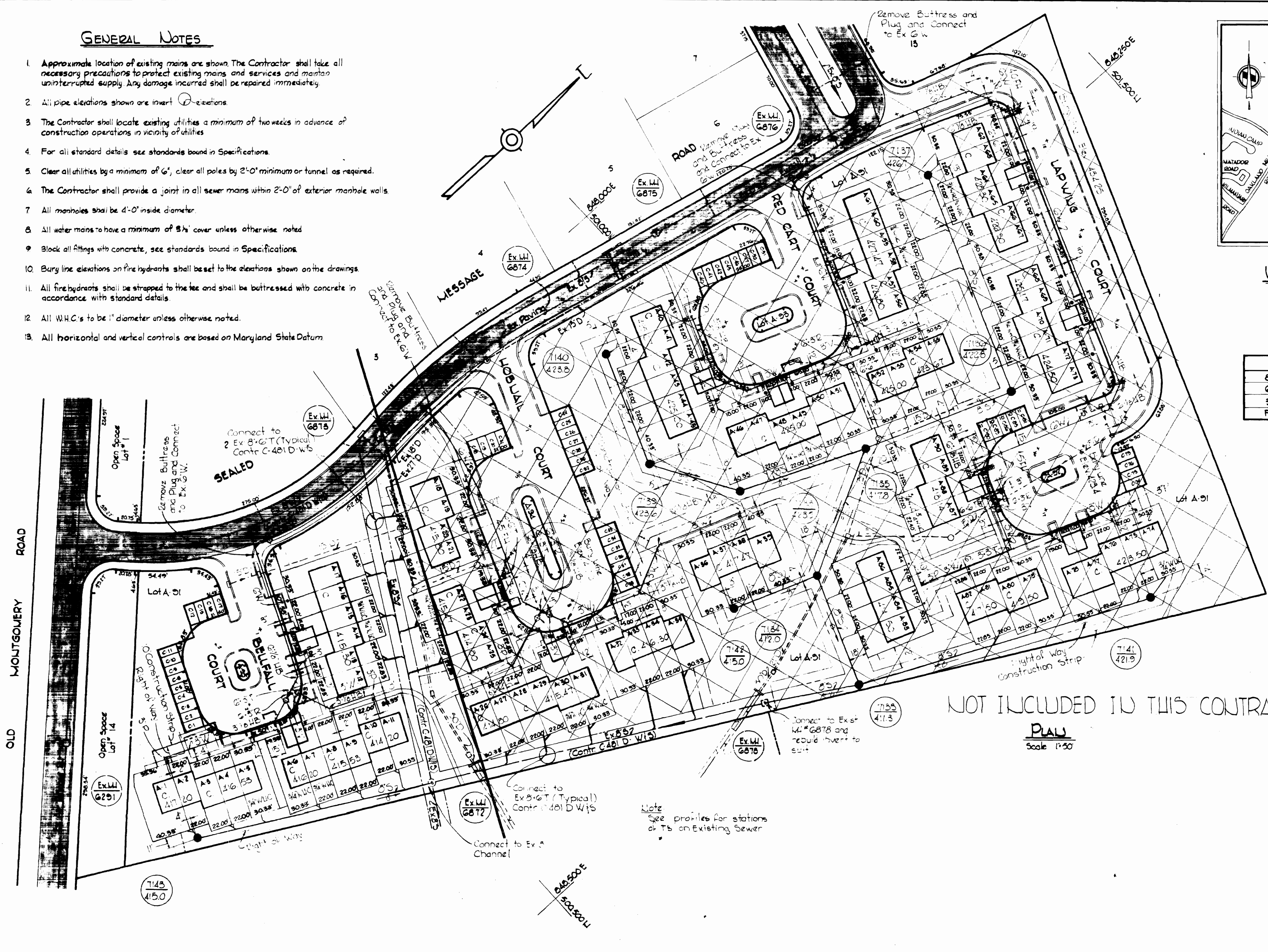
GENERAL NOTES

1. Approximate location of existing mains are shown. The Contractor shall take all necessary precautions to protect existing mains and services and maintain uninterrupted supply. Any damage incurred shall be repaired immediately.
2. All pipe elevations shown are invert elevations.
3. The Contractor shall locate existing utilities a minimum of two weeks in advance of construction operations in vicinity of utilities.
4. For all standard details see standards bound in Specifications.
5. Clear all utilities by a minimum of 6', clear all poles by 2'-0" minimum or tunnel as required.
6. The Contractor shall provide a joint in all sewer mains within 2'-0" of exterior manhole walls.
7. All manholes shall be 4'-0" inside diameter.
8. All water mains to have a minimum of 3 1/2' cover unless otherwise noted.
9. Block all fittings with concrete, see standards bound in Specifications.
10. Bury line elevations on fire hydrants shall be set to the elevations shown on the drawings.
11. All fire hydrants shall be strapped to the tee and shall be buttressed with concrete in accordance with standard details.
12. All W.H.C.'s to be 1" diameter unless otherwise noted.
13. All horizontal and vertical controls are based on Maryland State Datum.



VICINITY MAP
Scale: 1"=600'

QUANTITIES	
8" Sewer	250
6" Water	150
3" Water	250
Fire Hydrants	—



NOT INCLUDED IN THIS CONTRACT

PLAN
Scale 1"=50'

Note
See profiles for stations
at Ts on Existing Sewer

Village of Longreach
Parcel A
Section 1, Area G
Contract No. C-481 D W/S

WHITMAN, REQUARDT & ASSOCIATES ENGINEERS 1304 ST. PAUL ST. BALTIMORE, MARYLAND	DEPARTMENT OF PUBLIC WORKS HOWARD COUNTY, MARYLAND DATE 10-27-72 CHIEF - BUREAU OF WATER AND SEWER	CONTRACT NO. C-481 D W/S	PLAN OF WATER & SEWER MAINS	COLUMBIA VILLAGE OF LONGREACH ELECTION DISTRICT GULFORD NO. 6	DRAWING NO. 3 OF 24 SCALE AS SHOWN
--	---	--------------------------	--------------------------------	---	---------------------------------------

