

VICINITY MAP  
SCALE 1" = 800'

**GENERAL NOTES**

1. Approximate location of existing mains are shown. The contractor shall take all necessary precautions to protect existing mains and service connections and maintain uninterrupted supply. Any damage incurred shall be repaired immediately.
2. All pipe elevations shown are invert elevations.
3. The Contractor shall locate existing utilities a minimum of two weeks in advance of construction operations in vicinity of utilities.
4. For all standard details see standards bound in specifications.
5. Clear all utilities by a minimum of 6', all poles by a minimum 2'-0" or tunnel as required.
6. All water mains to have a minimum 3/2" of cover unless otherwise noted.
7. Block all fittings with concrete, see standards bound in specifications.
8. Fire hydrants shall be set at the bury line elevations shown on drawings.
9. Fire hydrants shall be strapped to trees and buttressed with concrete in accordance with standard details.
10. All valves shall be strapped to trees in accordance with standard details.
11. Costs of strapping fire hydrants and valves to trees shall be included in the unit price bid for furnishing and laying of water mains.
12. The Contractor shall provide a joint in all sewer mains within 2'-0" of exterior manhole walls.
13. Sewer manholes shall be 4'-0" inside except where otherwise noted.
14. The Contractor shall notify The Balto. Gas & Electric Co 72 hours in advance of excavation by calling 532-8000, Ext. 62.
15. The Contractor shall notify the C&P Telephone Co prior to any construction in vicinity of any Telephone Co facilities by calling collect G85-0400 in Balto, Md.
16. All water mains to be CIP, D.I.P., or A.C.P. unless otherwise noted.
17. All sewer mains to be V.C.P., A.C.P. CLASS 2400, or C.S.P. unless otherwise noted.
18. All water meters to be either twin 5/8" meters (Furnished by others), or single 5/8" meters (Furnished by others) as indicated.
19. Trees are to be protected against damage to the max extent reasonable.
20. Coordinates shown are based on Maryland State Datum.

**SANITARY SEWER MANHOLE COORDINATES**

M.H.#	NORTH	EAST
10	505,125.471	851,086.574
EX 35	504,811.618	850,926.415
EX 8	505,073.758	851,200.566
66	505,557.540	850,779.427
65	505,186.120	850,720.525
64	505,077.120	850,720.525
63	505,018.550	851,016.810
57	505,018.550	850,800.528
58	505,077.120	850,800.528
59	505,285.641	850,893.618
60	505,406.151	850,047.408
61	505,442.287	850,807.820
62	505,550.755	850,008.097
67	505,509.851	851,159.187
56	504,811.618	850,800.528

**WATER HOUSE CONNECTIONS  
5/8" METERS**

BLDG NO	METER TYPE	BLDG NO	METER TYPE	BLDG NO	METER TYPE
G-73	TWIN	G-75	TWIN	G-124	TWIN
G-74	TWIN	G-100	TWIN	G-125	TWIN
G-75	TWIN	G-101	TWIN	G-126	TWIN
G-76	TWIN	G-102	TWIN	G-127	TWIN
G-77	TWIN	G-103	TWIN	G-128	SINGLE
G-78	TWIN	G-104	TWIN	G-129	TWIN
G-79	TWIN	G-105	TWIN	G-130	TWIN
G-80	TWIN	G-106	TWIN	G-131	TWIN
G-81	TWIN	G-107	TWIN	G-132	TWIN
G-82	TWIN	G-108	TWIN	G-133	TWIN
G-83	SINGLE	G-109	TWIN	G-134	SINGLE
G-84	TWIN	G-110	TWIN	G-135	TWIN
G-85	TWIN	G-111	TWIN	G-136	TWIN
G-86	TWIN	G-112	TWIN	G-137	SINGLE
G-87	TWIN	G-113	TWIN	G-138	SINGLE
G-88	TWIN	G-114	TWIN	G-139	SINGLE
G-89	TWIN	G-115	SINGLE	G-140	SINGLE
G-90	SINGLE	G-116	TWIN	G-141	TWIN
G-91	TWIN	G-117	TWIN	G-142	TWIN
G-92	TWIN	G-118	TWIN	G-143	TWIN
G-93	TWIN	G-119	TWIN	G-144	TWIN
G-94	TWIN	G-120	TWIN	G-145	TWIN
G-95	TWIN	G-121	TWIN	G-146	TWIN
G-96	TWIN	G-122	TWIN	G-147	TWIN
G-97	TWIN	G-123	TWIN		
G-98	TWIN				
		TOTAL SINGLE WM'S - 7		TOTAL TWIN WM'S - 54	

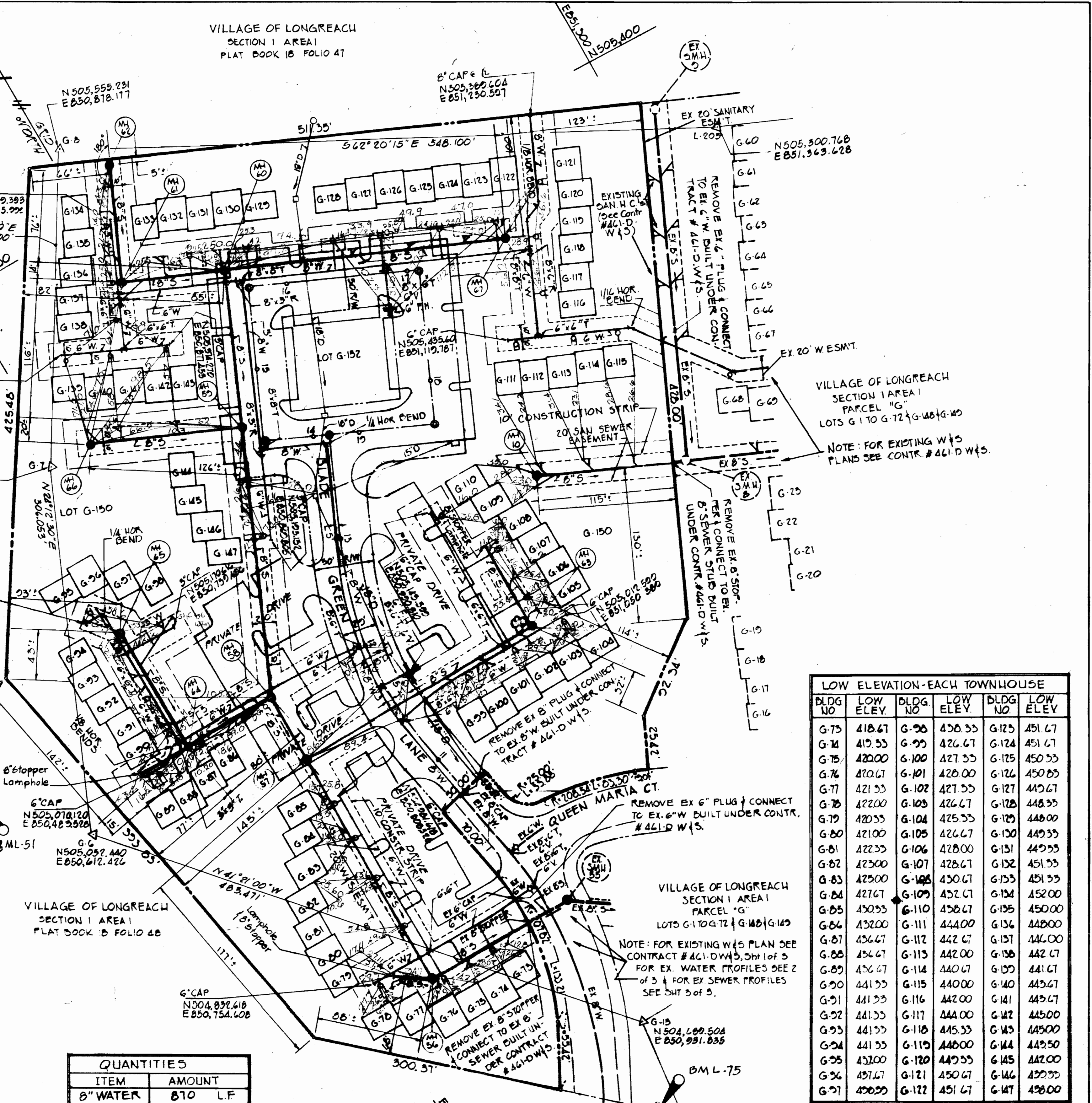
**SANITARY SEWER HOUSE CONNECTIONS**

BLDG NO	SEWER CONN	BLDG NO	SEWER CONN	BLDG NO	SEWER CONN
G-73	SINGLE	G-99	SINGLE	G-127	TWIN
G-74	TWIN	G-100	TWIN	G-128	SINGLE
G-75	TWIN	G-101	TWIN	G-129	SINGLE
G-76	SINGLE	G-102	SINGLE	G-130	TWIN
G-77	TWIN	G-103	TWIN	G-131	TWIN
G-78	TWIN	G-104	TWIN	G-132	TWIN
G-79	TWIN	G-105	SINGLE	G-133	TWIN
G-80	TWIN	G-106	SINGLE	G-134	SINGLE
G-81	TWIN	G-107	TWIN	G-135	TWIN
G-82	TWIN	G-108	TWIN	G-136	TWIN
G-83	TWIN	G-109	SINGLE	G-137	TWIN
G-84	TWIN	G-110	SINGLE	G-138	TWIN
G-85	SINGLE	G-111	TWIN	G-139	SINGLE
G-86	SINGLE	G-112	TWIN	G-140	TWIN
G-87	SINGLE	G-113	TWIN	G-141	TWIN
G-88	SINGLE	G-114	TWIN	G-142	TWIN
G-89	SINGLE	G-115	SINGLE	G-143	TWIN
G-90	TWIN	G-116	SINGLE	G-144	SINGLE
G-91	TWIN	G-117	SINGLE	G-145	TWIN
G-92	TWIN	G-118	SINGLE	G-146	TWIN
G-93	TWIN	G-119	SINGLE	G-147	SINGLE
G-94	SINGLE	G-120	TWIN	TOTAL TWIN CONN'S 24	
G-95	TWIN	G-121	TWIN	TOTAL SINGLE CONN'S 21	
G-96	TWIN	G-122	TWIN		
G-97	TWIN	G-123	TWIN		
G-98	TWIN	G-124	TWIN		

NOTE: LOTS 128 & 129 & 124 & 125 SEWER HOUSE CONN'S TO BE SET @ A 100%

**QUANTITIES**

ITEM	AMOUNT
8" WATER	870 L.F.
6" WATER	265 L.F.
6" SEWER	1541 L.F.
F.H.'s	2 EA.



**LOW ELEVATION - EACH TOWNHOUSE**

BLDG NO	LOW ELEV.	BLDG NO	LOW ELEV.	BLDG NO	LOW ELEV.
G-73	418.67	G-96	436.35	G-125	451.67
G-74	415.55	G-99	426.67	G-124	451.67
G-75	420.00	G-100	427.55	G-125	450.55
G-76	420.67	G-101	428.00	G-126	450.85
G-77	421.55	G-102	427.55	G-127	449.67
G-78	422.00	G-103	426.67	G-128	448.55
G-79	420.55	G-104	425.55	G-129	448.00
G-80	421.00	G-105	426.67	G-130	449.55
G-81	422.55	G-106	428.00	G-131	449.55
G-82	423.00	G-107	428.67	G-132	451.55
G-83	425.00	G-108	430.67	G-133	451.55
G-84	427.67	G-109	432.67	G-134	452.00
G-85	430.55	G-110	438.67	G-135	450.00
G-86	432.00	G-111	444.00	G-136	448.00
G-87	436.67	G-112	442.67	G-137	446.00
G-88	436.67	G-113	442.00	G-138	442.67
G-89	436.67	G-114	440.67	G-139	441.67
G-90	441.55	G-115	440.00	G-140	443.67
G-91	441.55	G-116	442.00	G-141	443.67
G-92	441.55	G-117	444.00	G-142	445.00
G-93	441.55	G-118	445.55	G-143	445.00
G-94	441.55	G-119	448.00	G-144	449.50
G-95	452.00	G-120	449.55	G-145	442.00
G-96	451.67	G-121	450.67	G-146	450.55
G-97	450.55	G-122	451.67	G-147	450.00

1. D.M. L-75 R.R SPIKE IN 15" WALNUT EL. 415.55  
3' FROM SOUTH E OF PARCEL "G"  
2. D.M. L-51 SPIKE IN 10" CHERRY TREE 434.55  
85' FROM WEST E OF PARCEL "G".

*R. Wayne C. ...*  
RICHARD P. BROWNE ASSOCIATES  
Engineers  
Columbia, Maryland  
P.E. REG. #5150

HOWARD COUNTY DEPARTMENT OF PUBLIC WORKS  
11-28-72  
DATE  
CHIEF ENGINEER

CONTRACT NO. 2479-D WBS

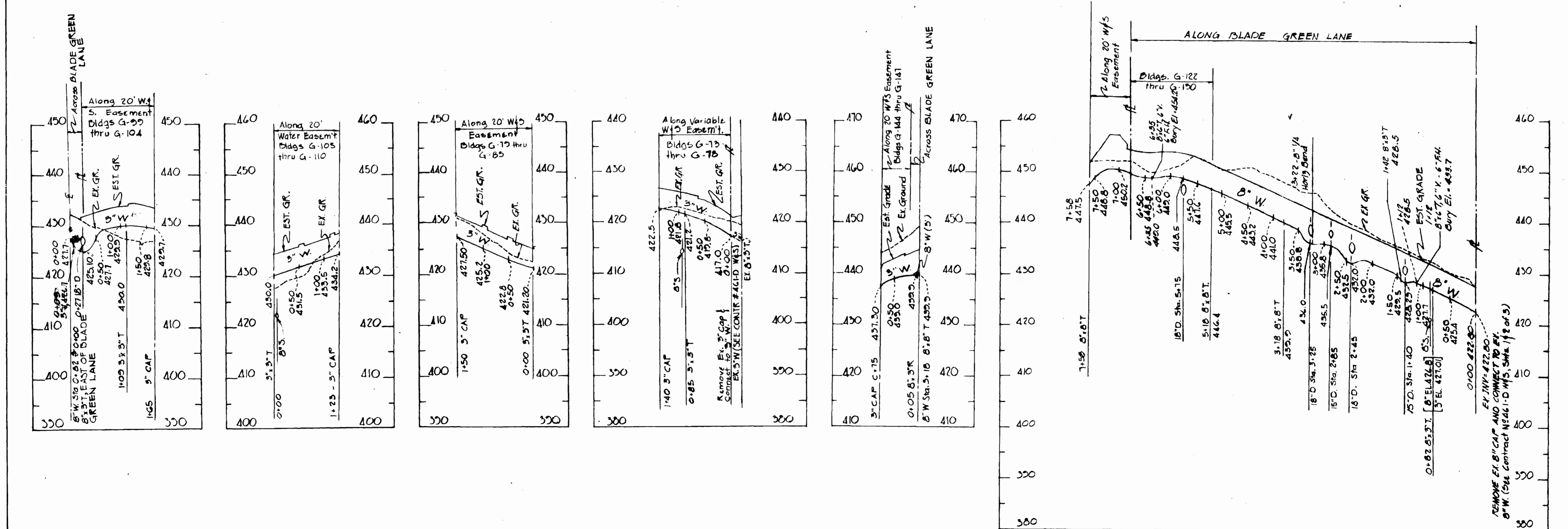
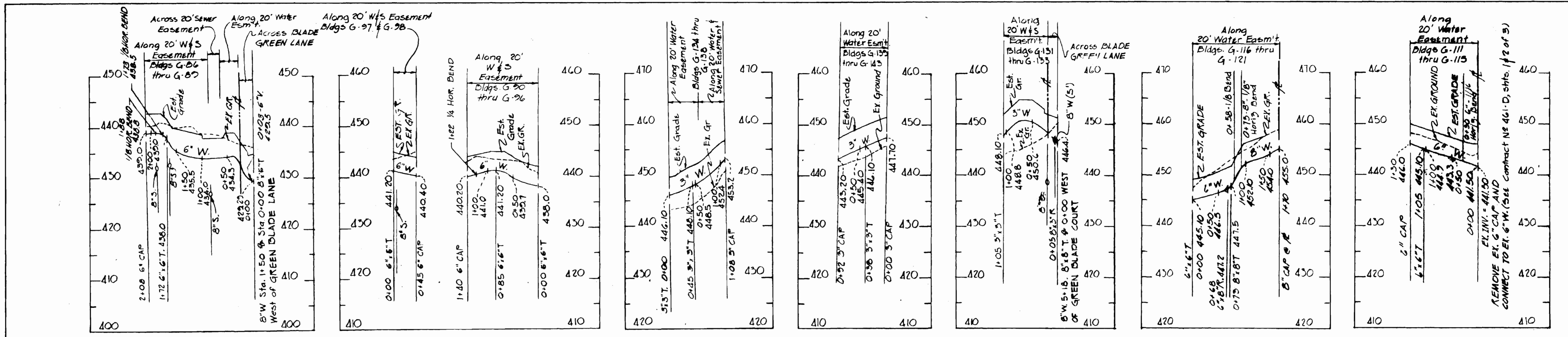
PLAN OF  
WATER & SEWER MAINS

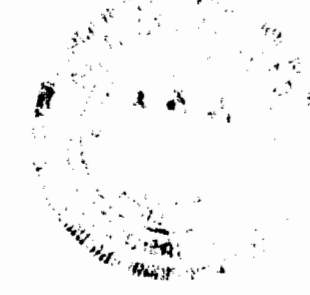
COLUMBIA  
VILLAGE OF LONGREACH  
SECTION 1 AREA 1  
PARCEL "G" LOTS G-73 - G-147 & G-150 & 152

DRAWING NO.	SCALE	DES. W.M.N.
1	1" = 50'	DRW. W.M.N.
3		CHK. T.K.S.

As-Built June 13, 1973

WS 477 W&S/2



  
 PE  
 MD REG #5190  
**R. Wayne Keebler**  
**ENGINEERS**  
 Columbia, Maryland

HOWARD COUNTY DEPARTMENT OF PUBLIC WORKS  
 11-28-72 DATE *W O P* CHIEF ENGINEER

CONTRACT NO. 2479-D W&S

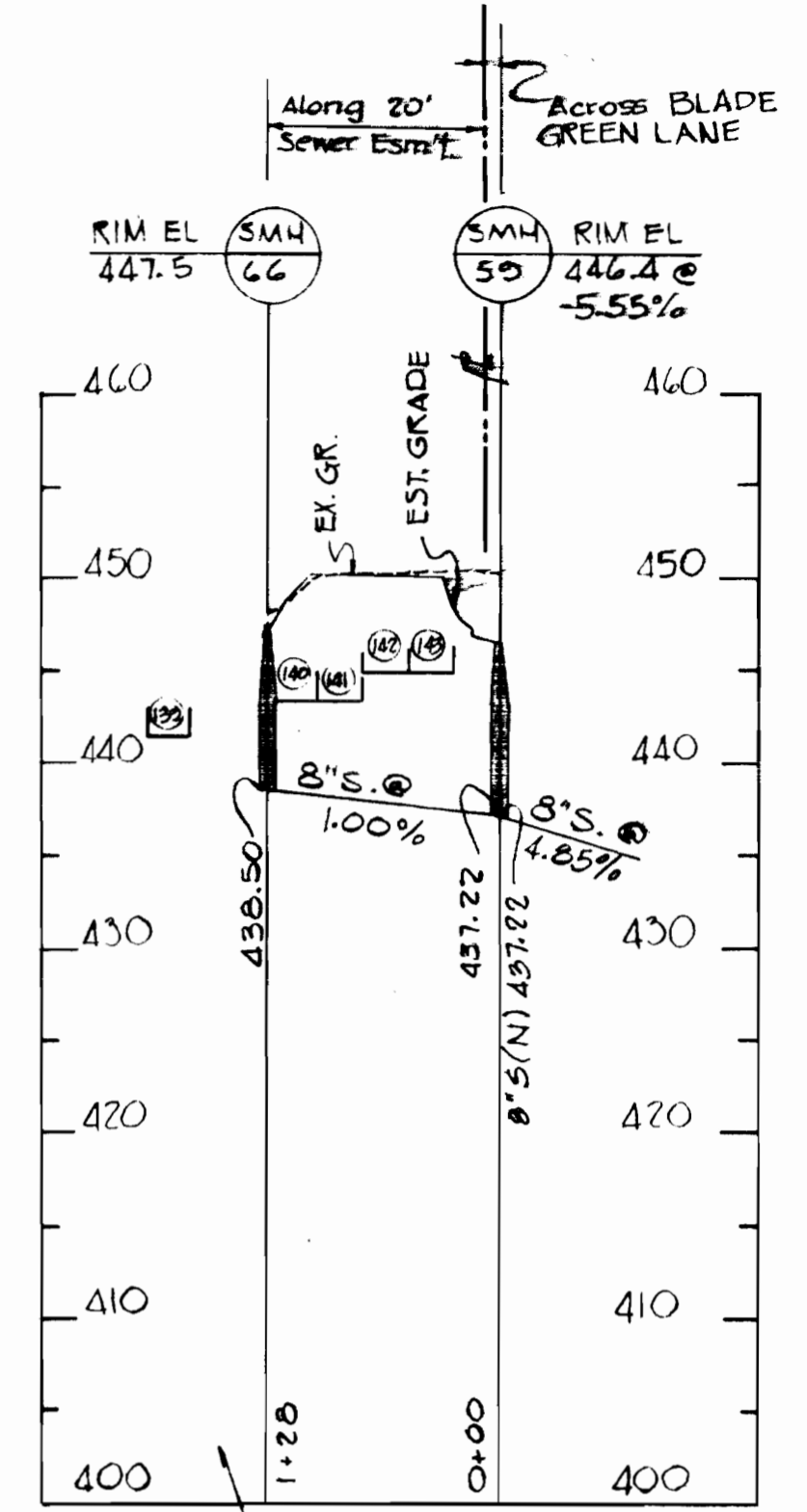
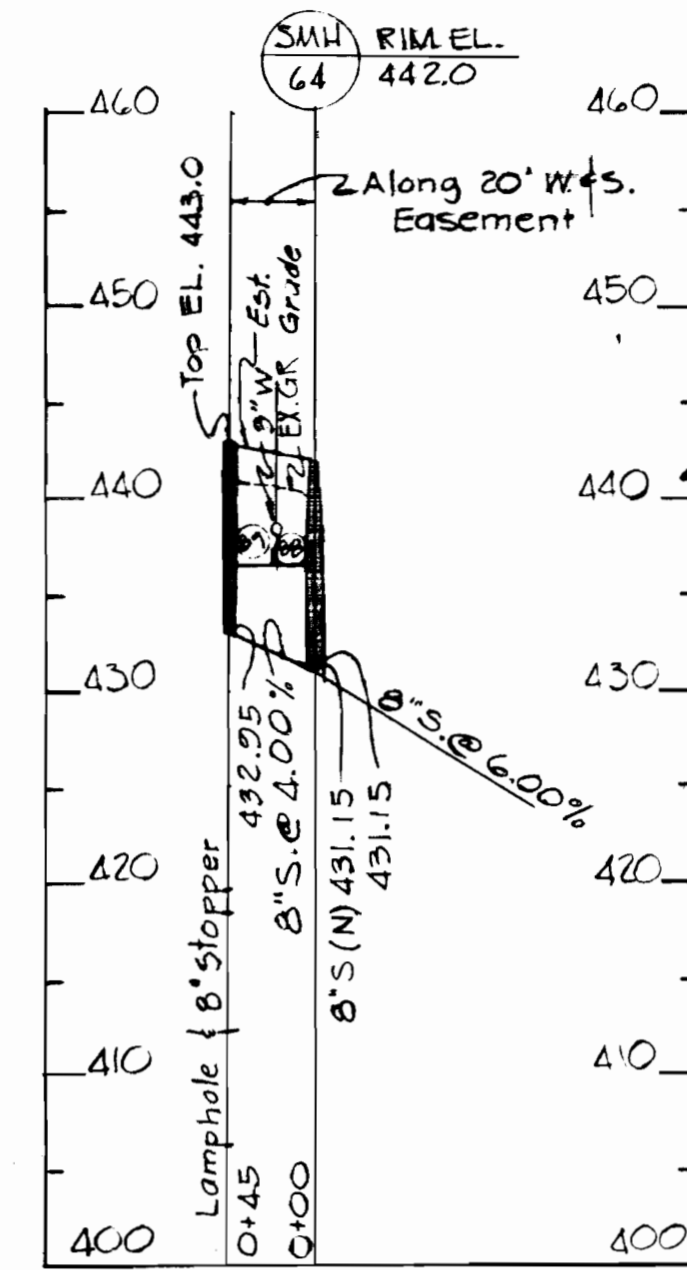
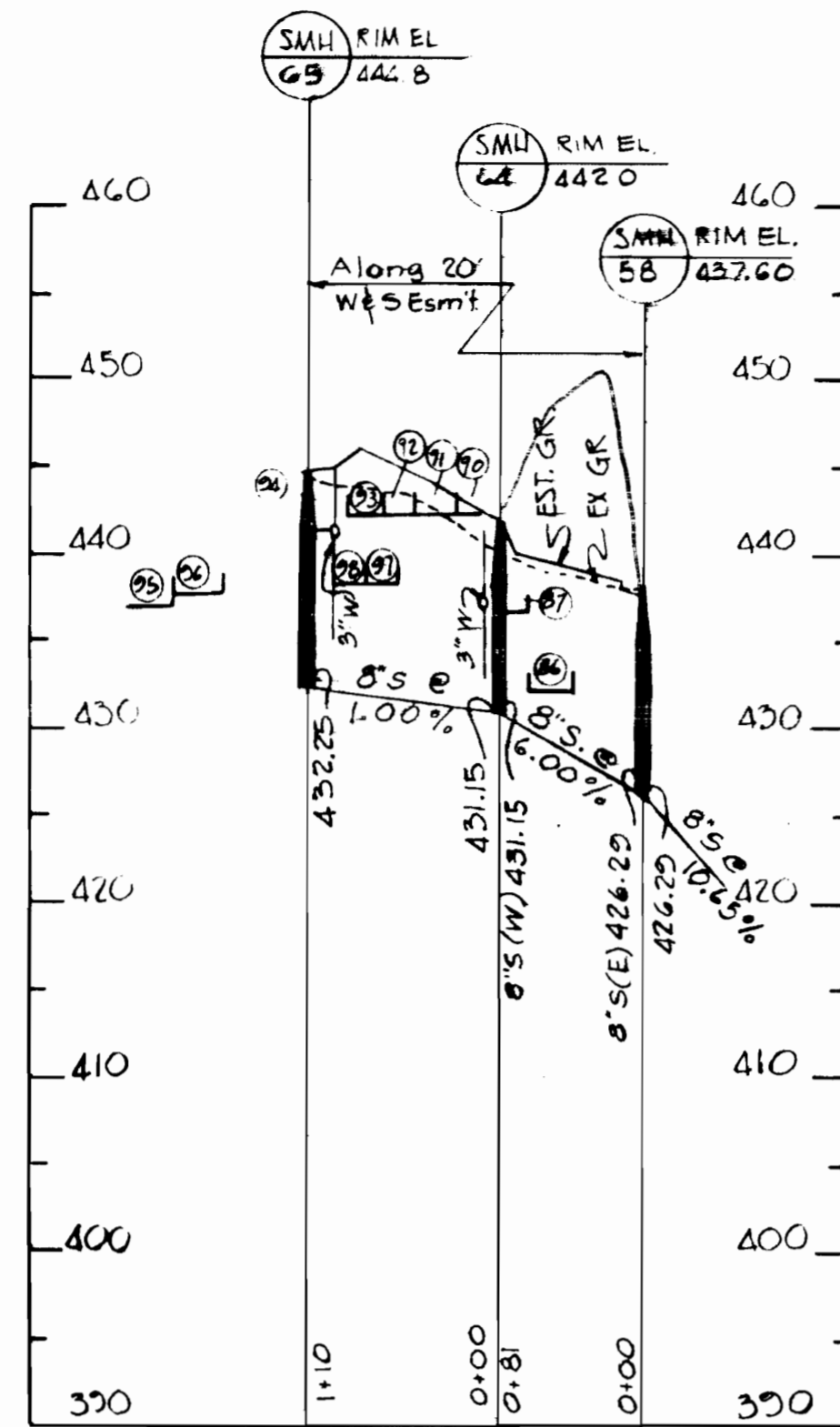
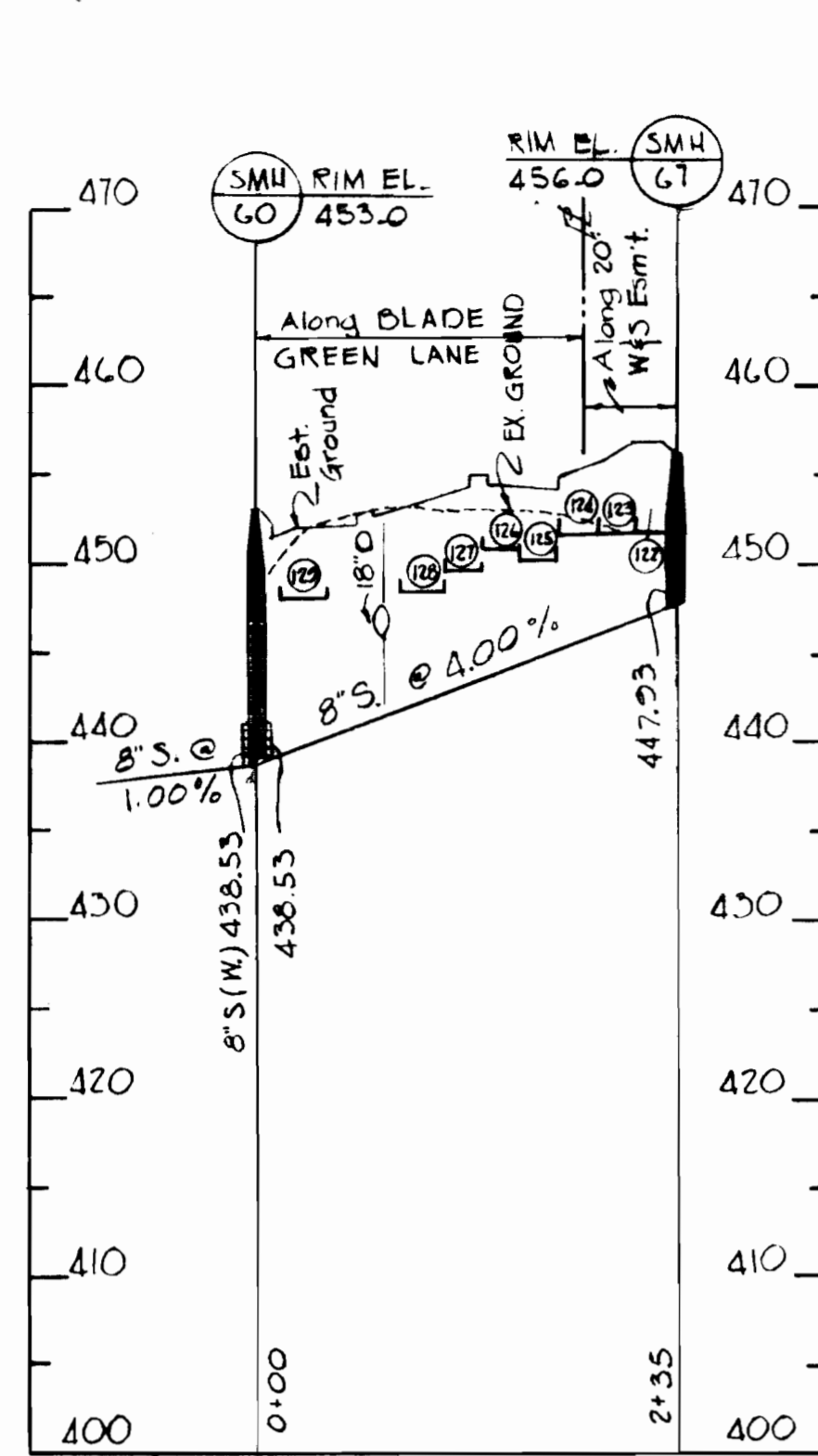
PROFILES OF WATER MAINS

COLUMBIA VILLAGE OF LONGREACH SECTION I AREA I  
 PARCEL "G" LOTS G-73-G-147 & G-150 & 152

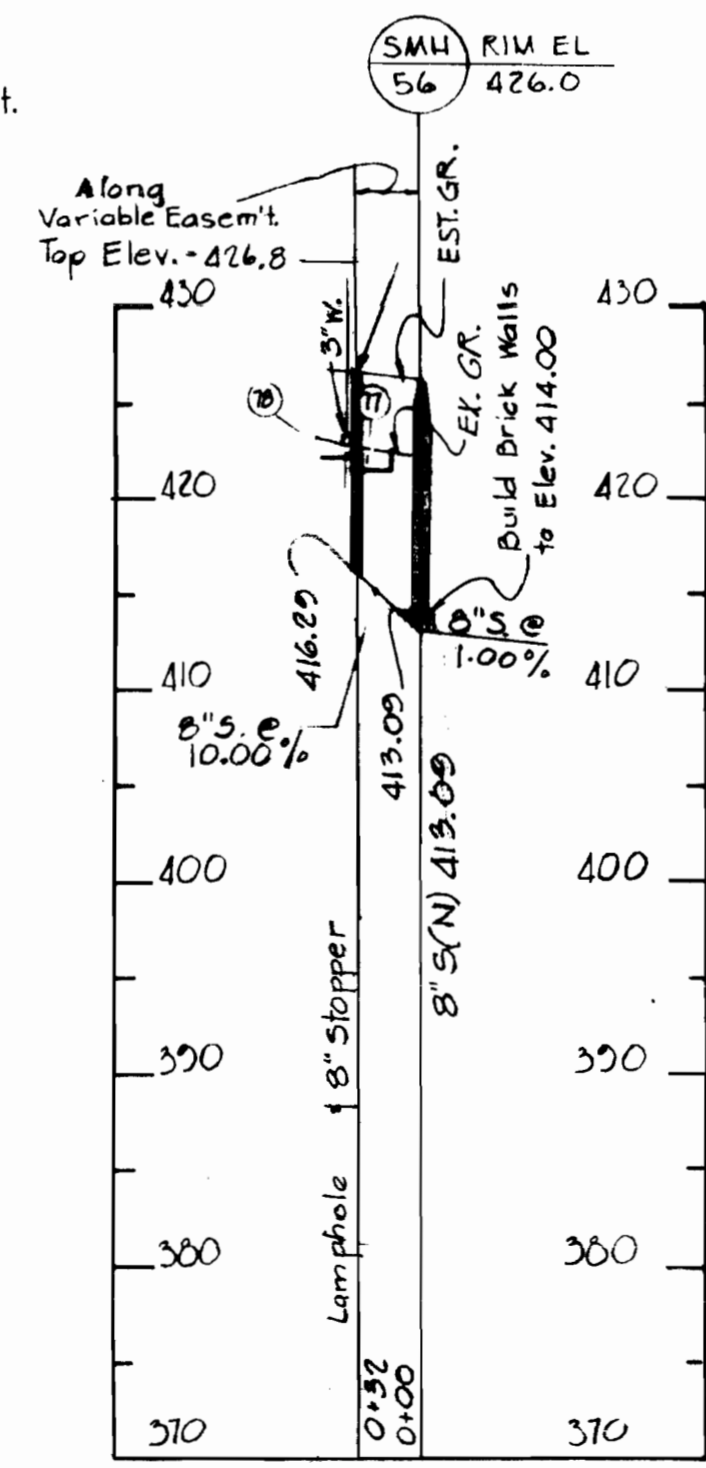
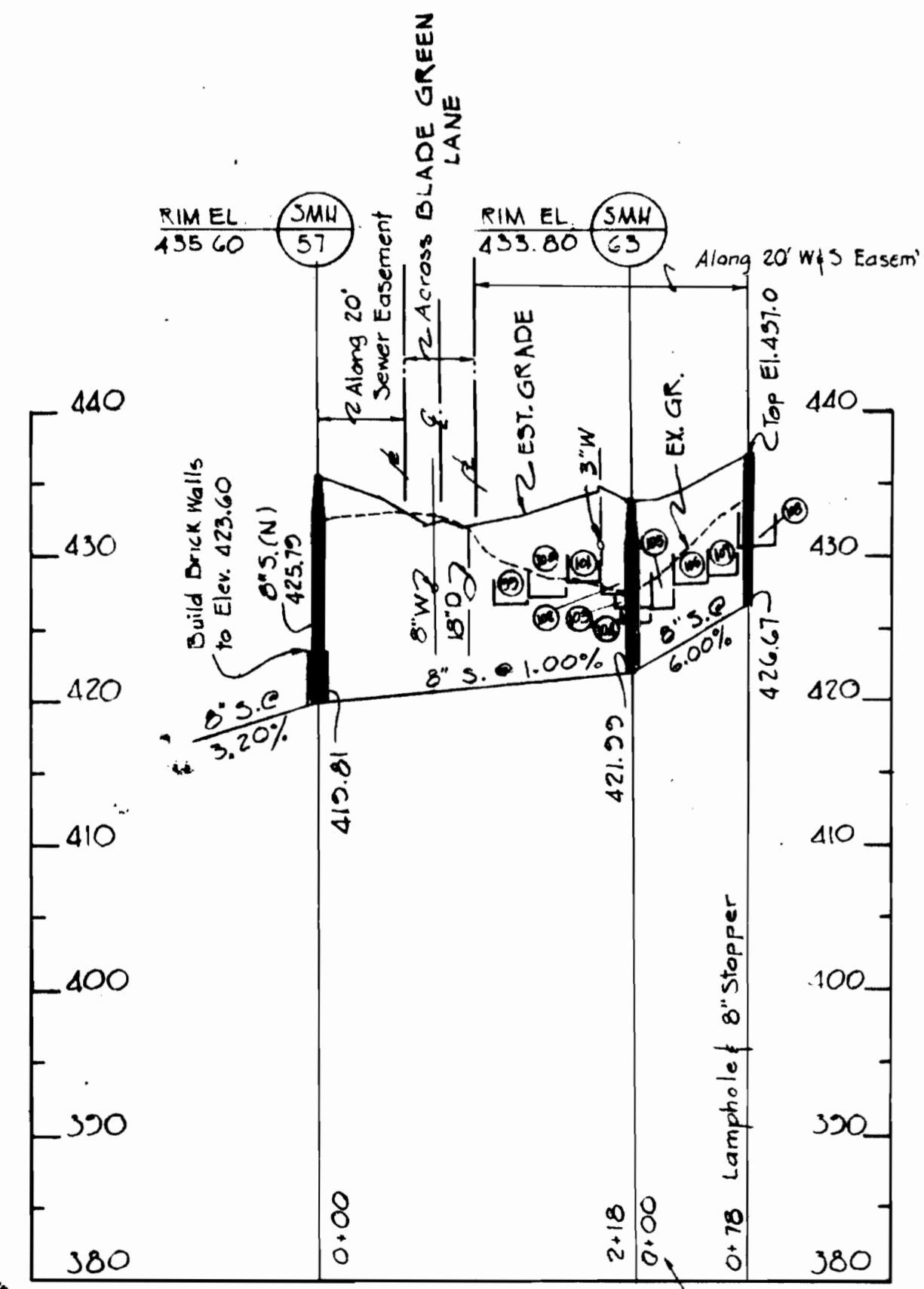
DRAWING NO. 2 OF 3

SCALE HOR. 1"=100' VER. 1"=10'  
 DES. W.M.N. DRW. W.M.N. CHK. T.K.S.

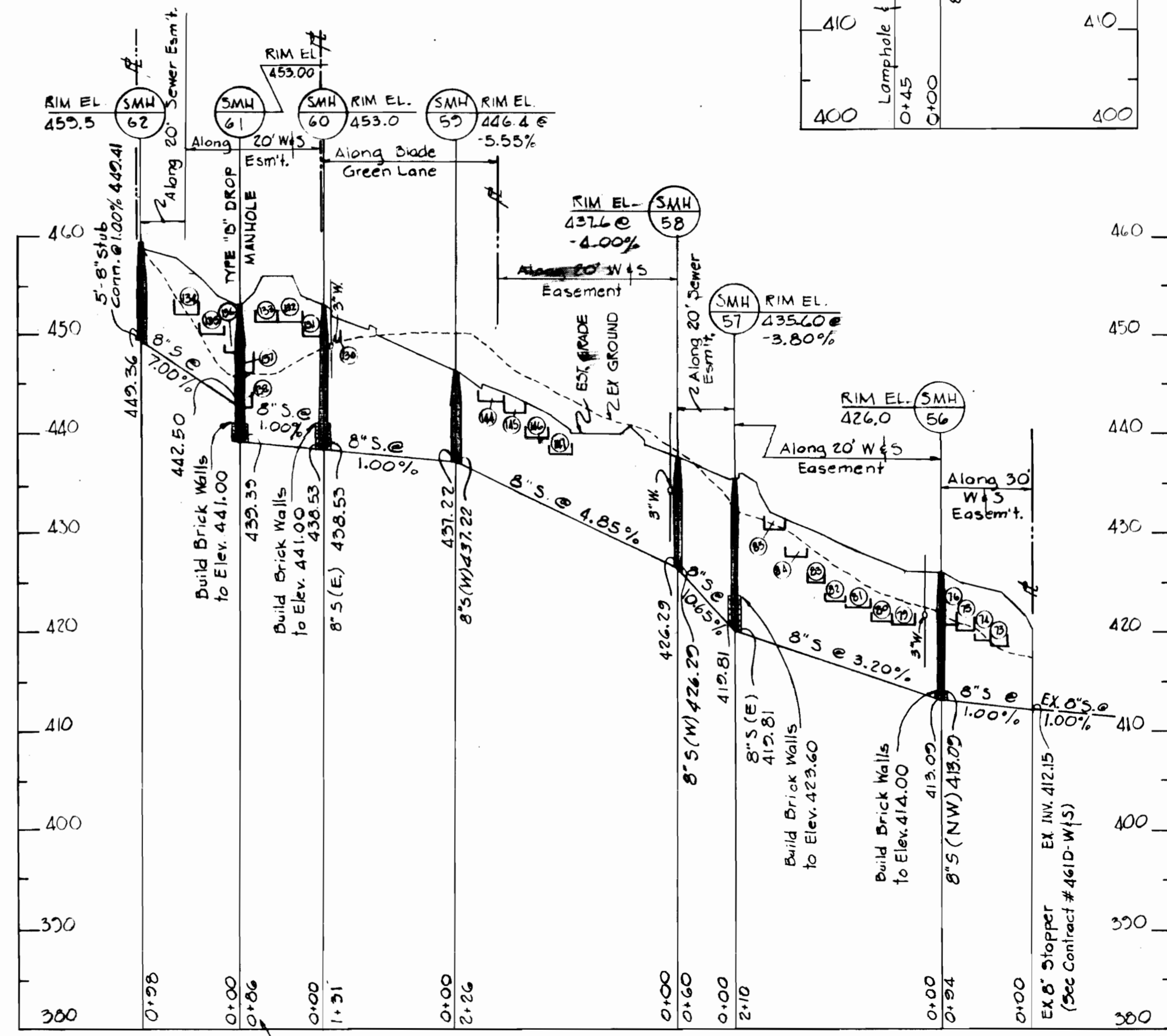
As-Built June 13, 1973



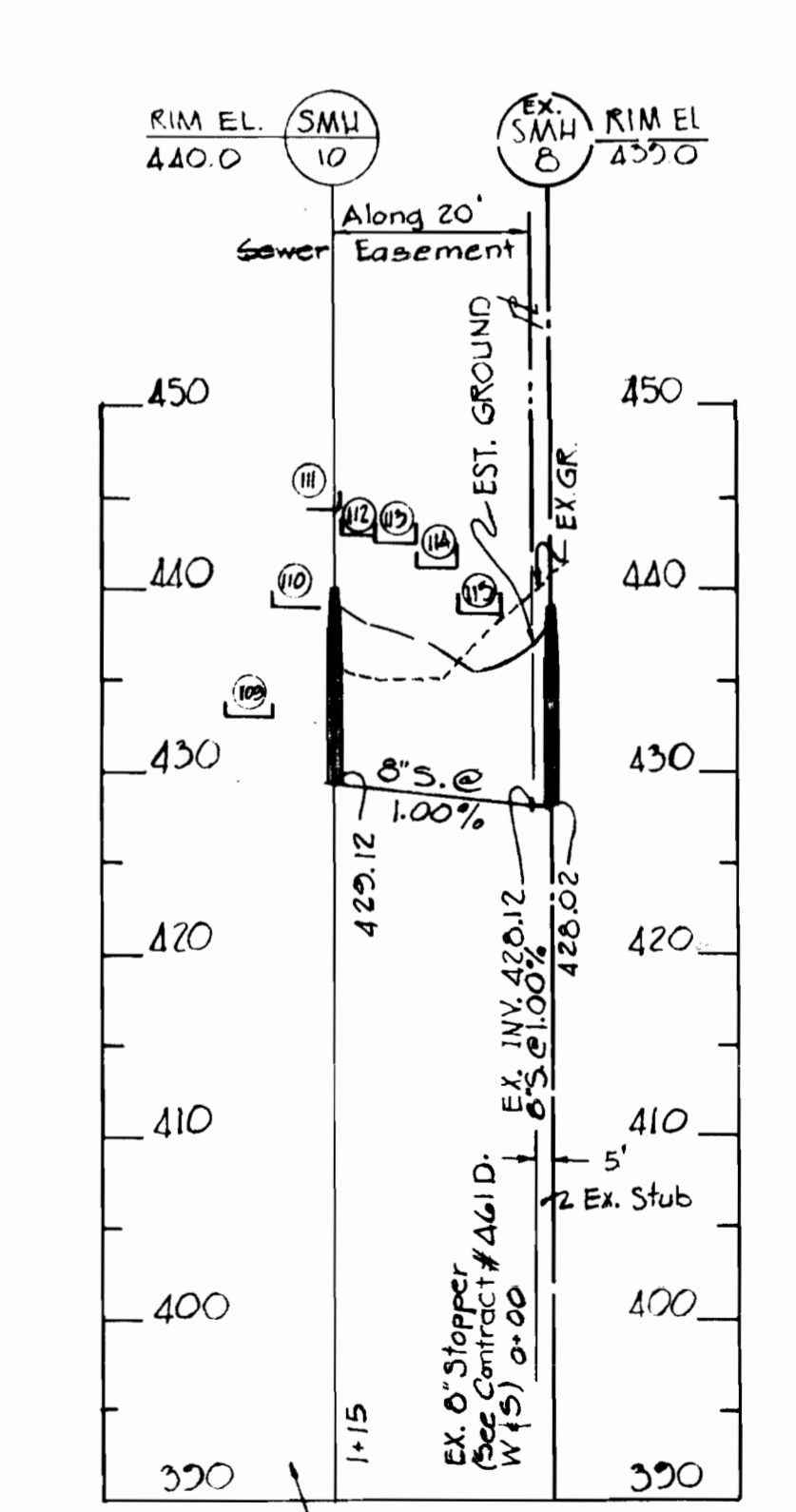
NOTE: LOT # 139 SEWER HOUSE CONN. TO BE SET @ 1.00%



NOTE: LOT # 104 SEWER HOUSE CONN. TO BE SET @ 1.00%



NOTE: LOT # 138 SEWER HOUSE CONN. TO BE SET @ 1.00%



NOTE: LOT # 109 SEWER HOUSE CONN. TO BE SET @ 1.00%



R. Wayne Keebler PE  
MD REG # 13130

**RICHARD P. BROWNE ASSOCIATES ENGINEERS**  
Columbia, Maryland

HOWARD COUNTY DEPARTMENT OF PUBLIC WORKS  
DATE: 11-28-72  
CHIEF ENGINEER: *W. Filbert*

CONTRACT NO. 2479 - D W & S

PROFILES OF SEWER MAINS

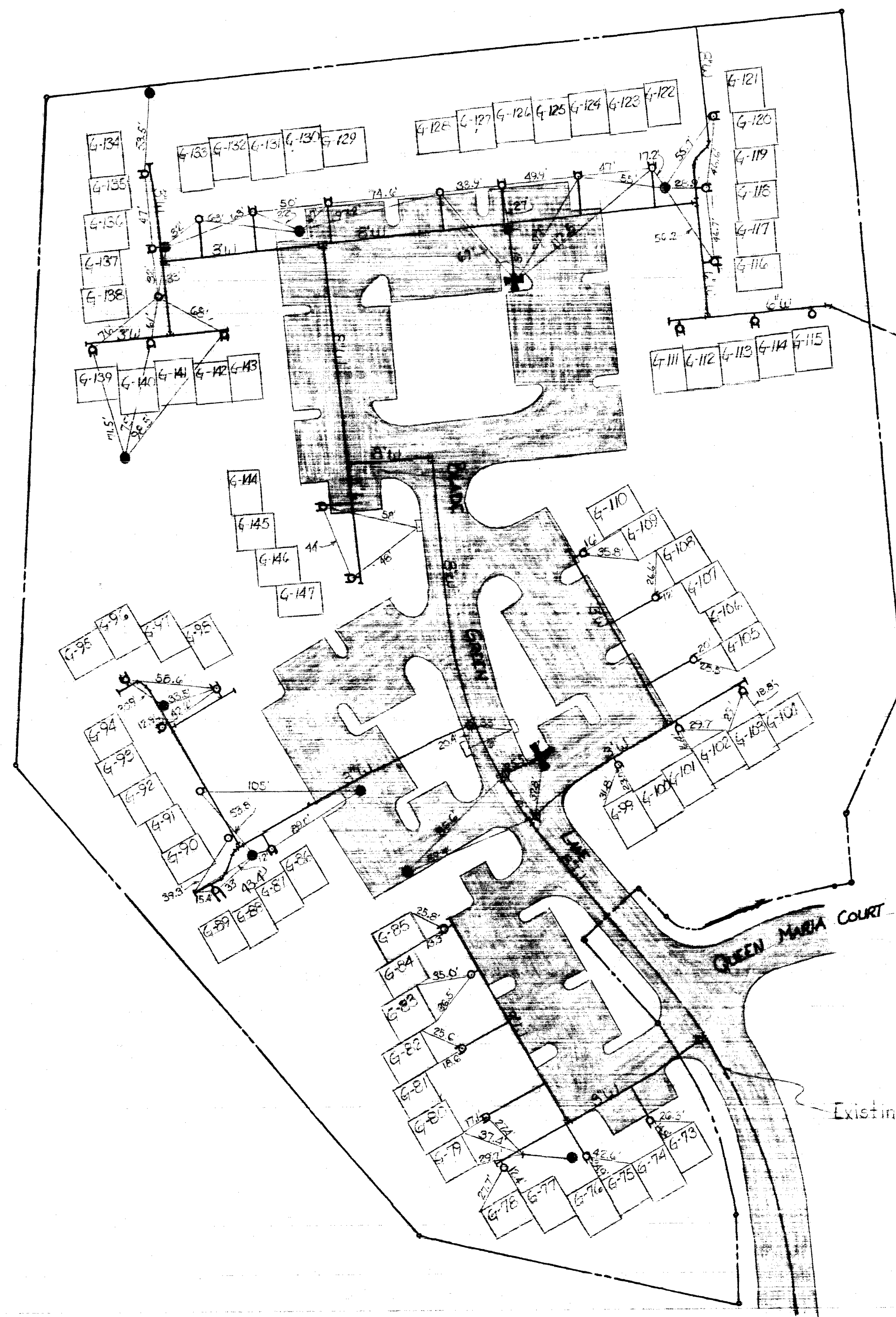
COLUMBIA VILLAGE OF LONGREACH SECTION 1 AREA 1  
PARCEL "G" LOTS G-73 - G-147 & G-150 & 152

DRAWING NO. 3 OF 3  
SCALE: HOR. 1"=100' VERT. 1"=10'

DES: W.H.N.  
DRW: W.H.N.  
CHK: T.K.S.

11-28-72

WS 479-W&S 4



Existing W - Contract 461 D W&S

Existing W - Contract 461 D W&S

DEPARTMENT OF PUBLIC WORKS  
HOWARD COUNTY, MARYLAND

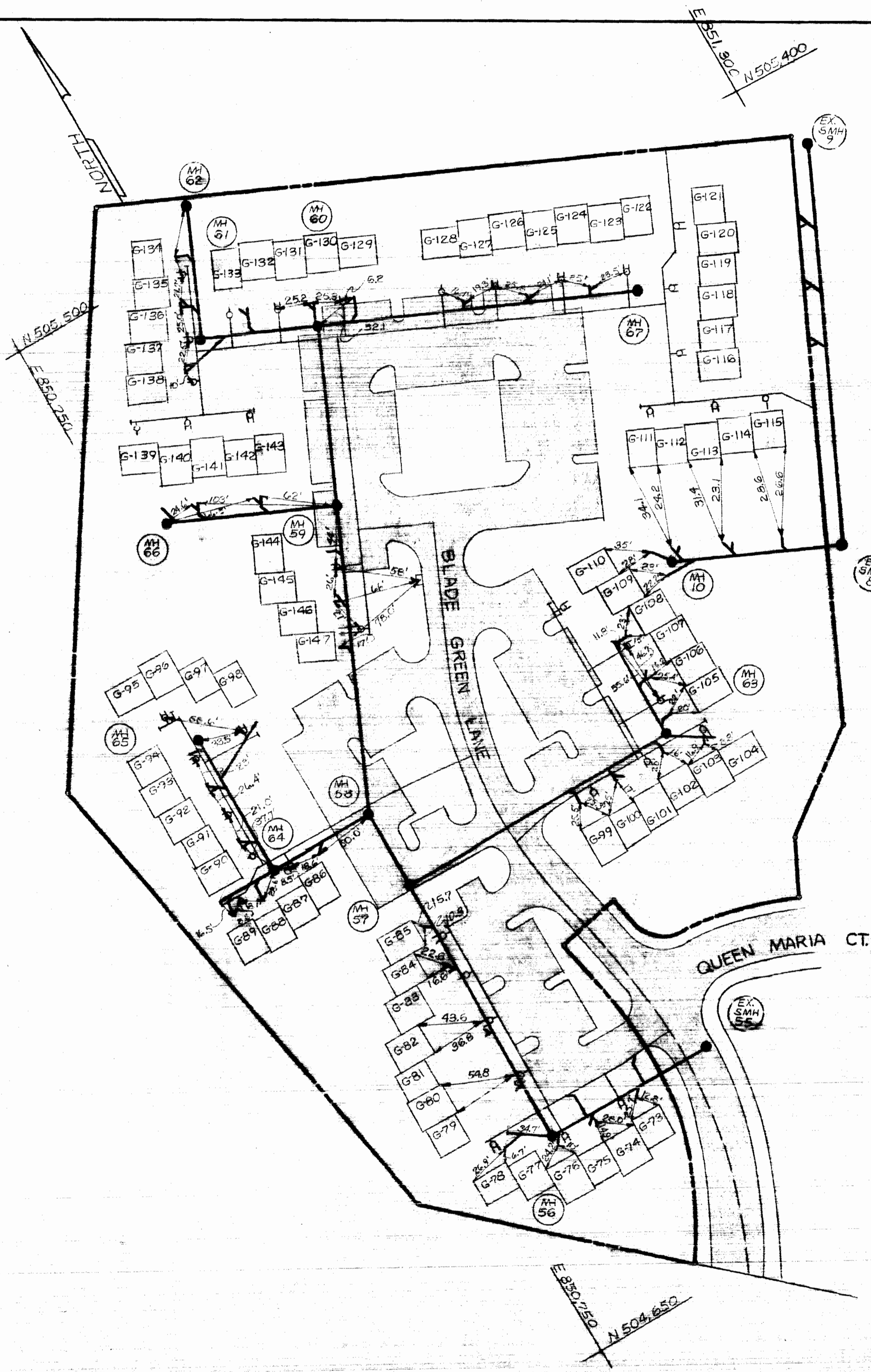
CONTRACT NO. 479 W&S

DRAWING NO. OF

SCALE

AS-BUILT June 13, 1973

WS 479-W&S-C



DEPARTMENT OF PUBLIC WORKS  
HOWARD COUNTY, MARYLAND

CONTRACT NO. 479 W&S

DRAWING NO. \_\_\_\_\_ OF \_\_\_\_\_ SCALE \_\_\_\_\_

AS-BUILT June 13, 1973