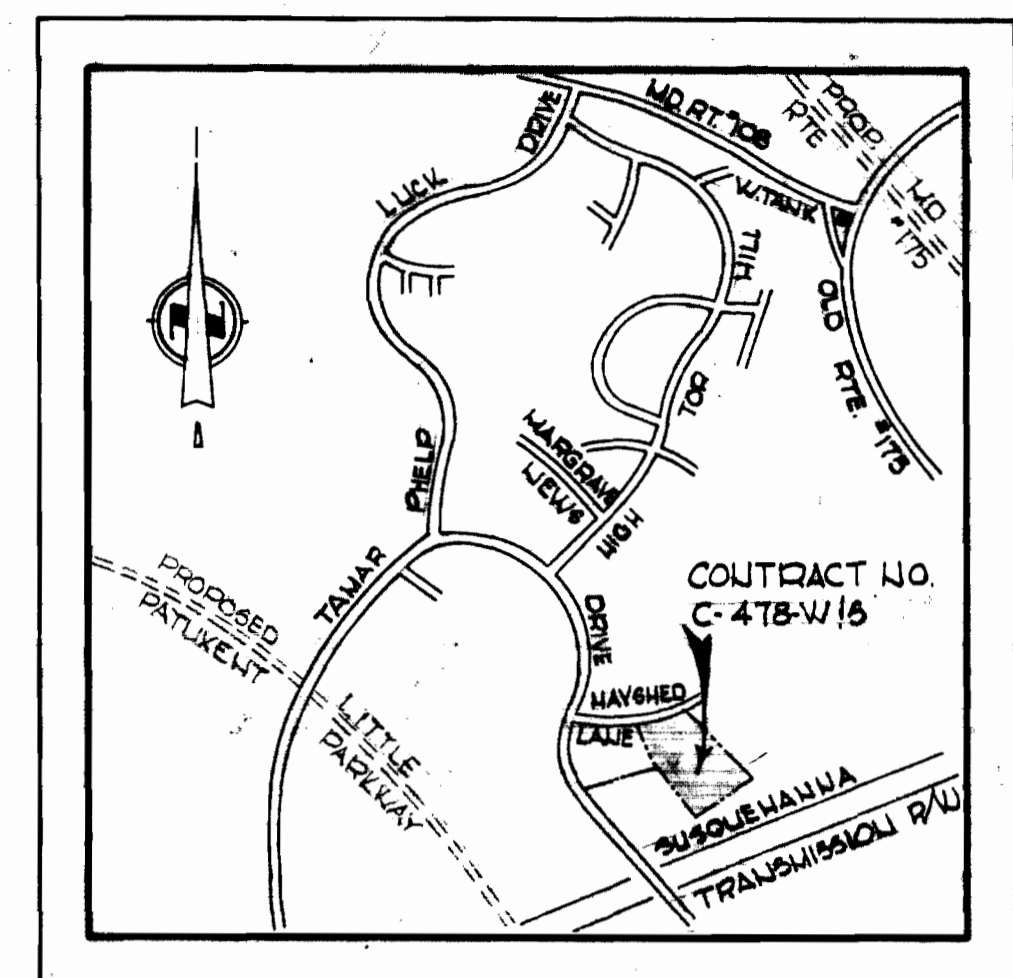


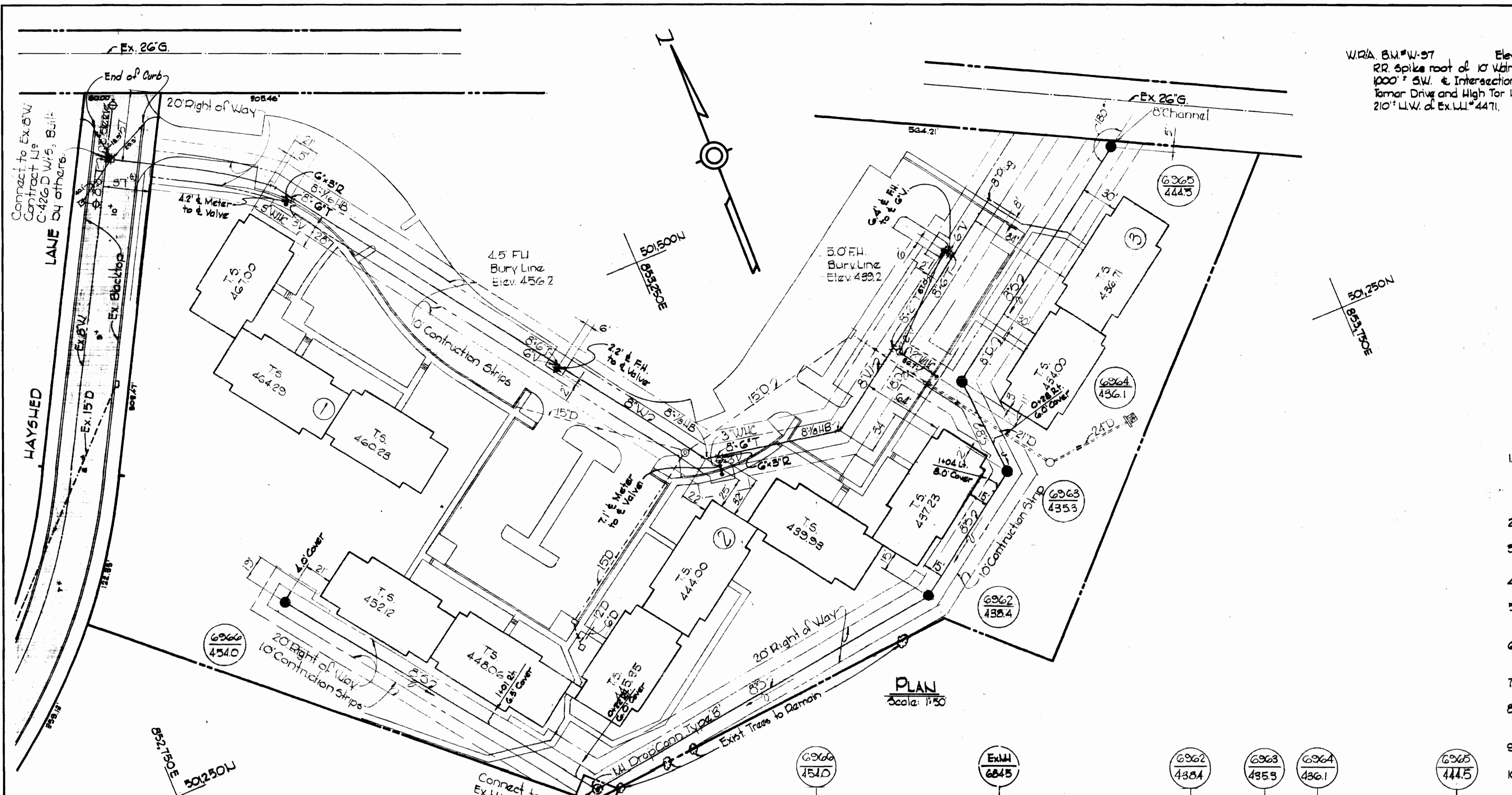
W/RA B.M. W-97 Elev. 510.66  
 RR spike root of 10 Walnut,  
 1000' SW. & Intersection  
 Tamar Drive and High Tor Hill,  
 210' L.W. of Ex. W-4471.



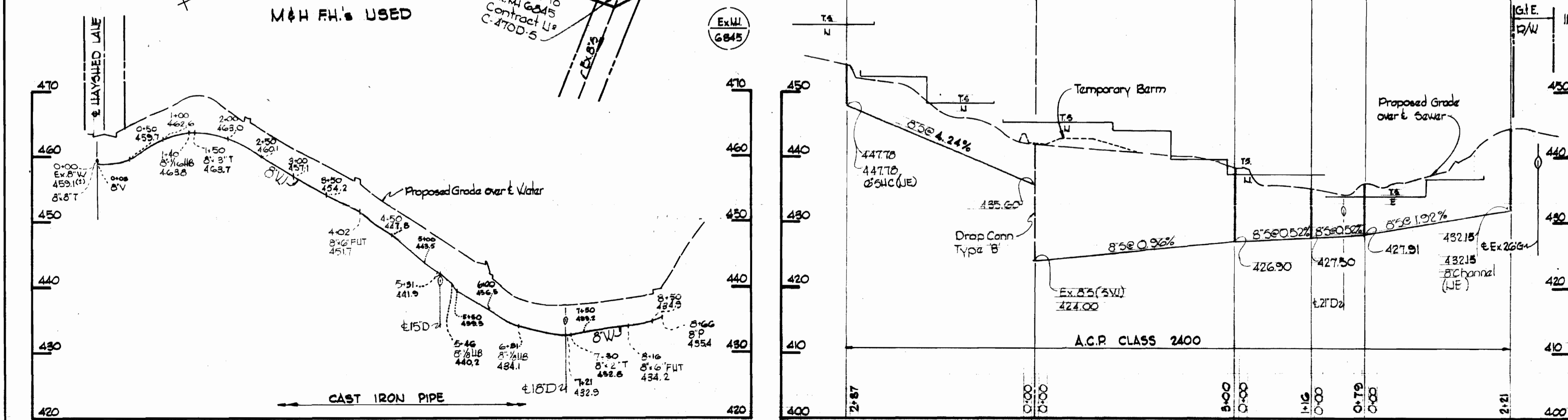
VICINITY MAP  
 Scale: 1" = 2000'

GENERAL NOTES

1. Approximate location of existing mains are shown. The Contractor shall take all necessary precautions to protect existing mains and services and maintain uninterrupted supply. Any damage incurred shall be repaired immediately.
2. All pipe elevations shown are invert elevations.
3. The Contractor shall locate existing utilities a minimum of two weeks in advance of construction operations in vicinity of utilities.
4. For all standard details see standards bound in Specifications.
5. Clear all utilities by a minimum of 6'; clear all poles by 2'0" minimum or tunnel as required.
6. The Contractor shall provide a joint in all sewer mains within 2'0" of exterior manhole wall.
7. All manholes shall be 4'0" inside diameter.
8. All water mains shall have a minimum of 3 1/2' cover unless otherwise noted.
9. Block all fittings with concrete, see standards bound in Specifications.
10. Bury line elevations on fire hydrants shall be set the elevations shown on the drawings.
11. All horizontal and vertical controls are based on Maryland State Datum.



PLAN  
 Scale: 1" = 50'



PROFILES  
 Scale: Horiz. 1" = 100'  
 Vert. 1" = 10'

QUANTITIES	
8" Sewer	1,010'
8" Water	870'
6" Water	20'
Fire Hydrants	2

STAKEOUT & DIARY  
 FB # 5254



*Kenneth A. McCord*

Village of Longreach  
 Parcel A  
 Section 1, Area 4  
 Contract No. C-478W/6

<b>WHITMAN, REQUARDT &amp; ASSOCIATES</b> ENGINEERS 1304 ST. PAUL ST. BALTIMORE, MARYLAND	<b>DEPARTMENT OF PUBLIC WORKS</b> HOWARD COUNTY, MARYLAND <i>W. O. Filbert</i> CHIEF - BUREAU OF WATER AND SEWER	<b>CONTRACT NO. C-478W/6</b>	<b>PLAN AND PROFILES OF</b> <b>WATER AND SEWER MAINS</b>	<b>COLUMBIA</b> <b>VILLAGE OF LONGREACH</b> <b>ELECTION DISTRICT GUILFORD NO. 6</b>	<b>DRAWING</b> NO. 1 OF 1	<b>SCALE</b> AS SHOWN	201-288
					DATE 5-26-72	NO. 6	NO. 6