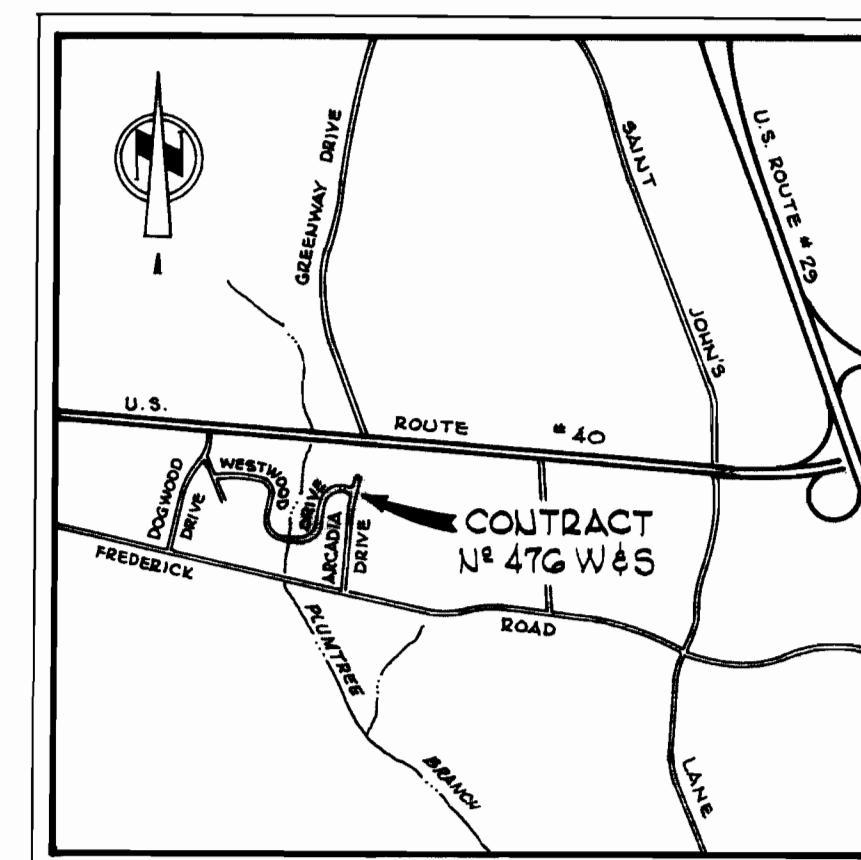


W.R.#A. B.M.# 51-J Elev. 569.23

R.R. Spike in base of
C & P Pole # 498 RV.
South side Frederick Rd.
300' W. of Log Cabin Lodge.

Notes:
Existing MH 1494 shall be
lowered 2' to elev. 360.2
Payment for lowering Exist. MH
will be made under LUMP
SUM ITEM N# A-8

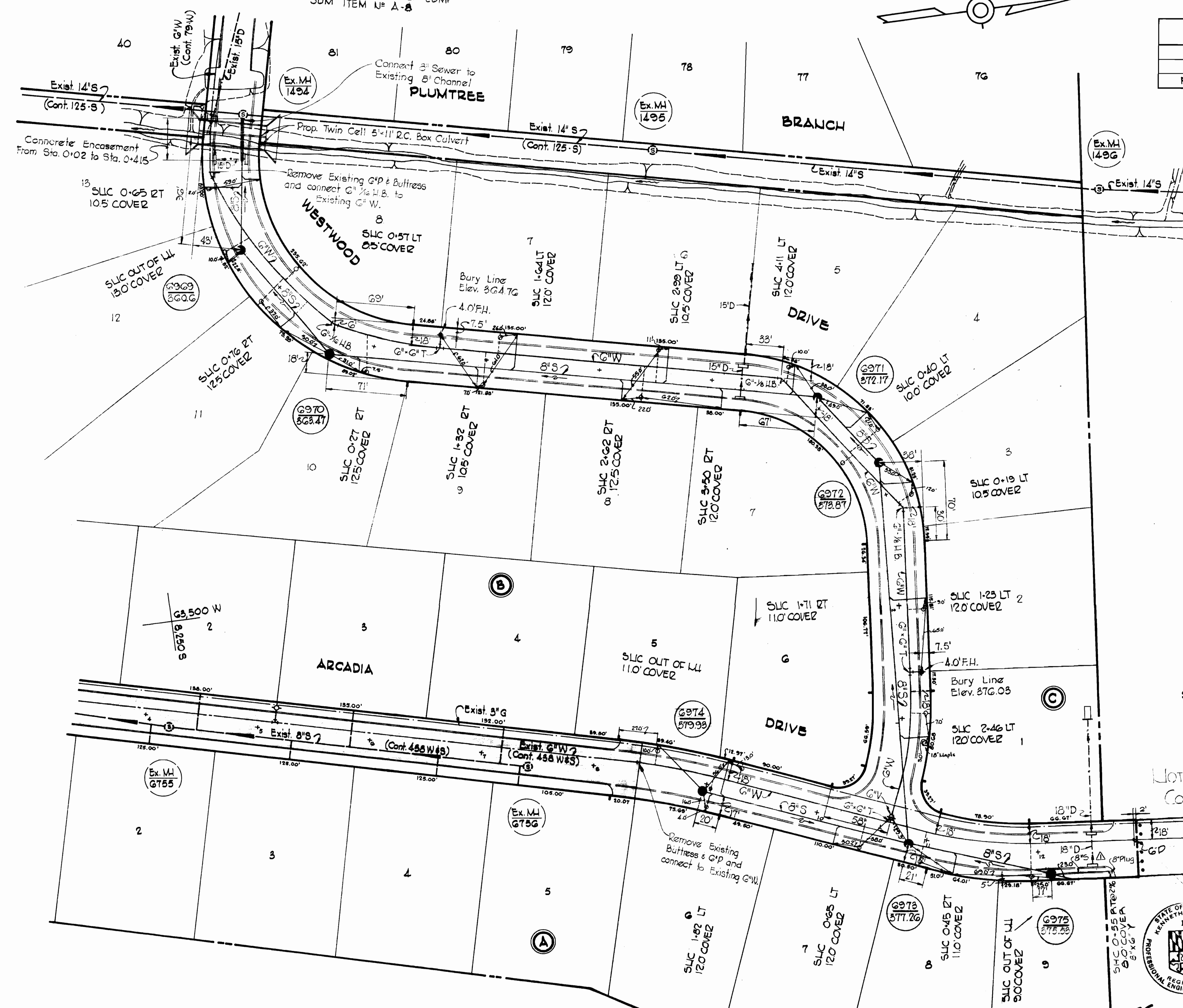
QUANTITIES	
8" Sewer	1420'
6" Water	1780'
Fire Hydrants	2



VICINITY MAP
Scale: 1" = 2,000'

GENERAL NOTES

1. Approximate location of existing mains are shown. The Contractor shall take all necessary precautions to protect existing mains and services and maintain uninterrupted supply. Any damage incurred shall be repaired immediately.
2. All pipe elevations shown are invert (P) elevations.
3. The Contractor shall locate existing utilities a minimum of two weeks in advance of construction operations in vicinity of utilities.
4. For all standard details see standards bound in Specifications.
5. Clear all utilities by a minimum of 6", clear all poles by 2'-0" minimum or tunnel as required.
6. The Contractor shall provide a joint in all sewer mains within 2'-0" of exterior Manhole walls.
7. All manhole shall be 4'-0" inside diameter.
8. All water mains to have a minimum of 3 1/2' cover unless otherwise noted.
9. Block all fittings with concrete, see standard details bound in Specifications.
10. Bury Line elevations on fire hydrants shall be set to the elevations shown on the drawings.
11. All fire hydrants shall be strapped to the tree and shall be buttressed with concrete in accordance with standard details.
12. All horizontal and vertical controls are based on Howard County Datum.



'AS-BUILT'
Stakeout and Diary FB 5244

NOT INCLUDED IN
CONTRACT

Property of
WILLIAM AND YVETTE ROBINSON



Kenneth A. McLeod

No	Date	Revision
1	3-17-75	Added 57' of 8" S Main Extension out of MH. 6975

WHITMAN, REQUARDT & ASSOCIATES
ENGINEERS
1304 ST. PAUL ST.
BALTIMORE, MARYLAND

DEPARTMENT OF PUBLIC WORKS
HOWARD COUNTY, MARYLAND
5-17-72
W. O. Fallent
CHIEF - BUREAU OF WATER AND SEWER

CONTRACT NO. 476 W & S

**PLAN OF
WATER & SEWER MAINS**

**ELECTION DISTRICT
ELLICOTT CITY NO. 2**

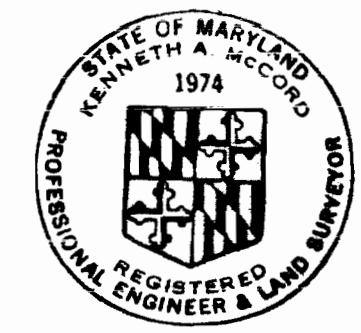
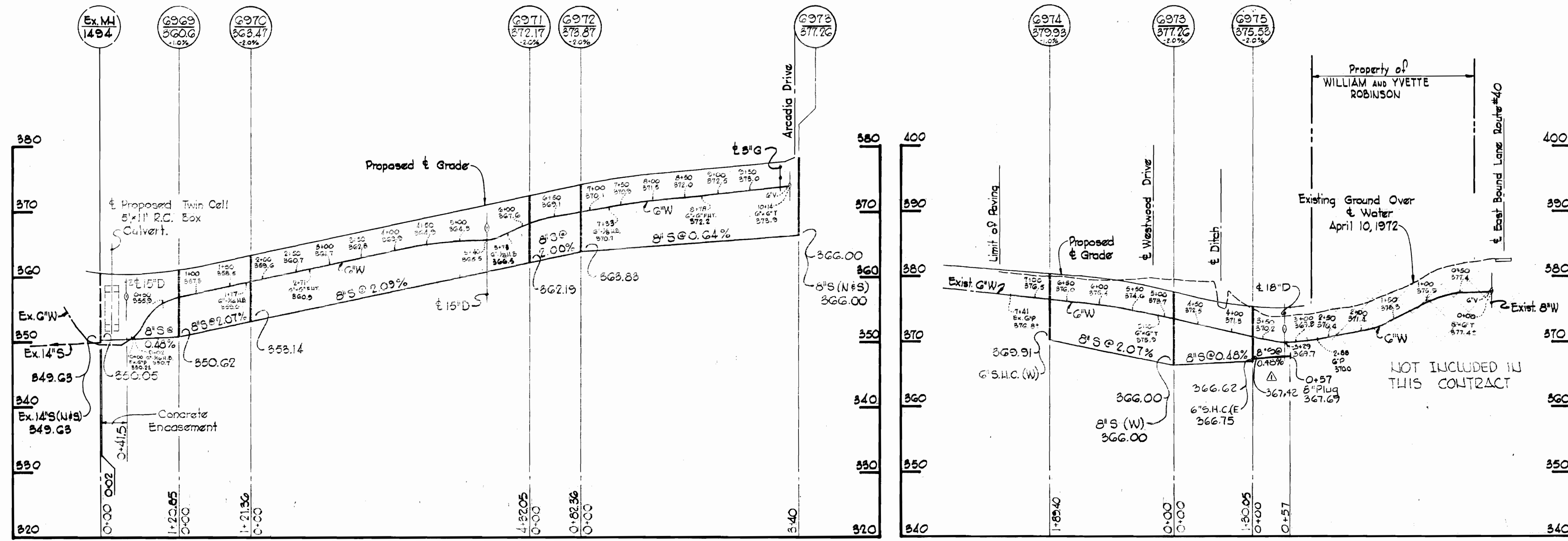
DRAWING NO.	SCALE
NO. 1 OF 2	B SW 45 S SW 45 AS SHOWN

Job Hill
Section 4A & 4B
Contract N# 476 W & S

WESTWOOD DRIVE

ARCADIA DRIVE

ALL SEWER - A.C.P.
ALL WATER - C.I.P.



Kenneth A. McCord

No	Date	Revision
3	3-17-76	Added Profile for 37' of 8" S Main Ext. out of NH. 6975

Nob Hill
Section 4A & 4B
Contract W-476 W&S

WHITMAN, REQUARDT & ASSOCIATES ENGINEERS 1304 ST. PAUL ST. BALTIMORE, MARYLAND	DEPARTMENT OF PUBLIC WORKS HOWARD COUNTY, MARYLAND DATE _____ CHIEF - BUREAU OF WATER AND SEWER	CONTRACT NO. 476 W & S	PROFILES OF WATER & SEWER MAINS	ELECTION DISTRICT ELLICOTT CITY NO. 2	DRAWING NO. 2	SCALE H-1"=100
					OF 2	V-1"=10

W. O. 6024-2

AS BUILT DEC 13, 1972

E.A.F. 11/1/72

E.A.F. 11/1/72

P. BRUNING 44-510 14778