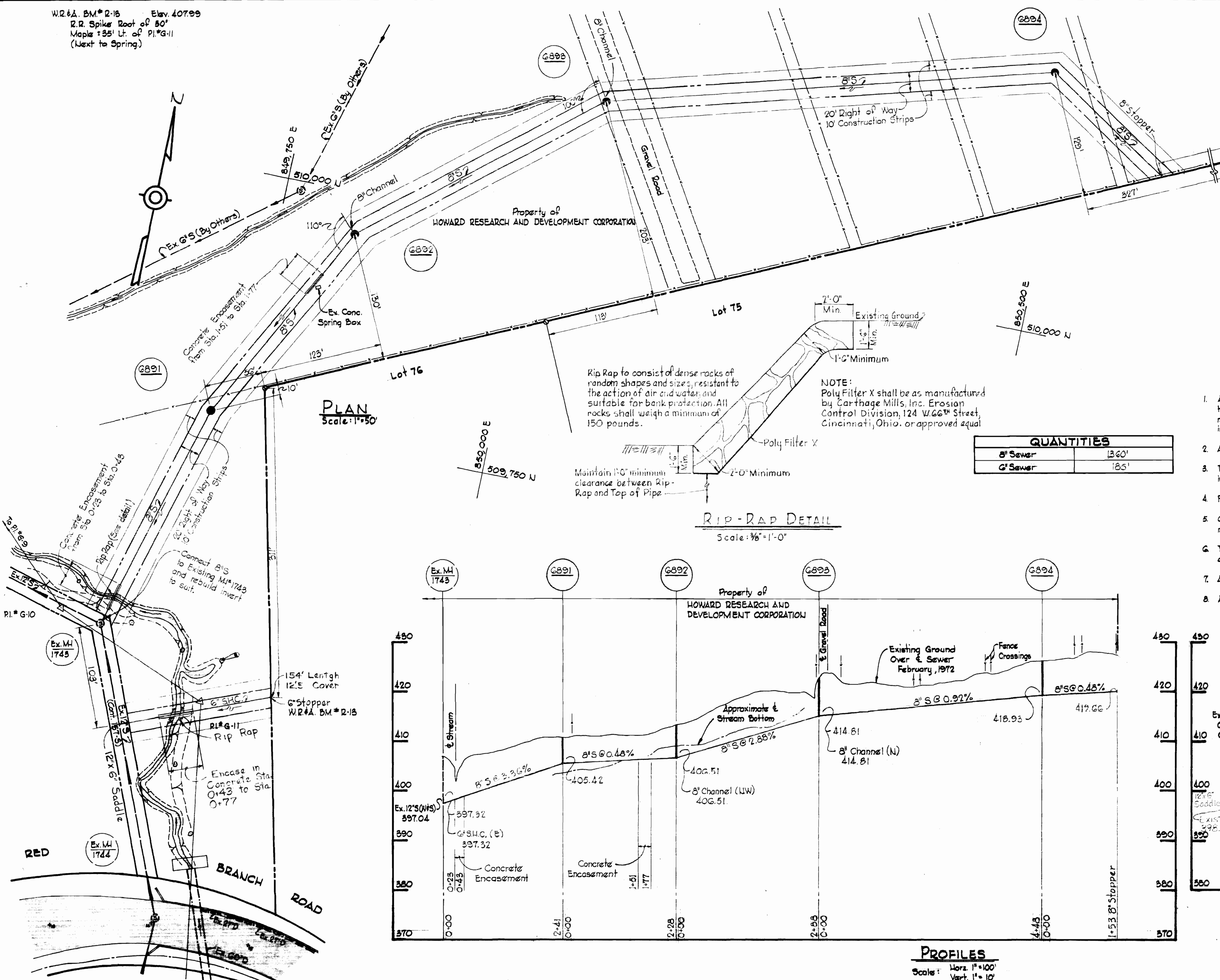


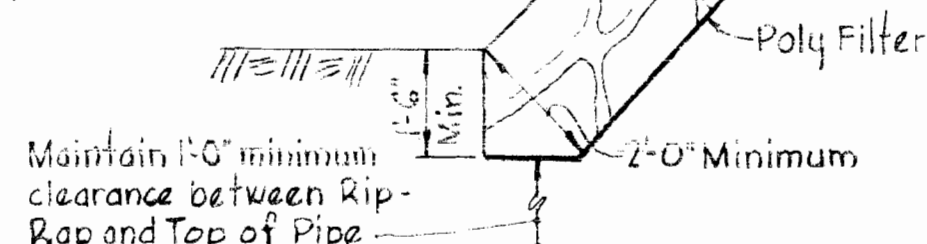
W.R.#2-15 Elev. 407.99  
 R.R. Spike Root of 80'  
 Maple 135' Lt. of P.I.#G-11  
 (Next to Spring)



PLAN  
 Scale: 1"=50'

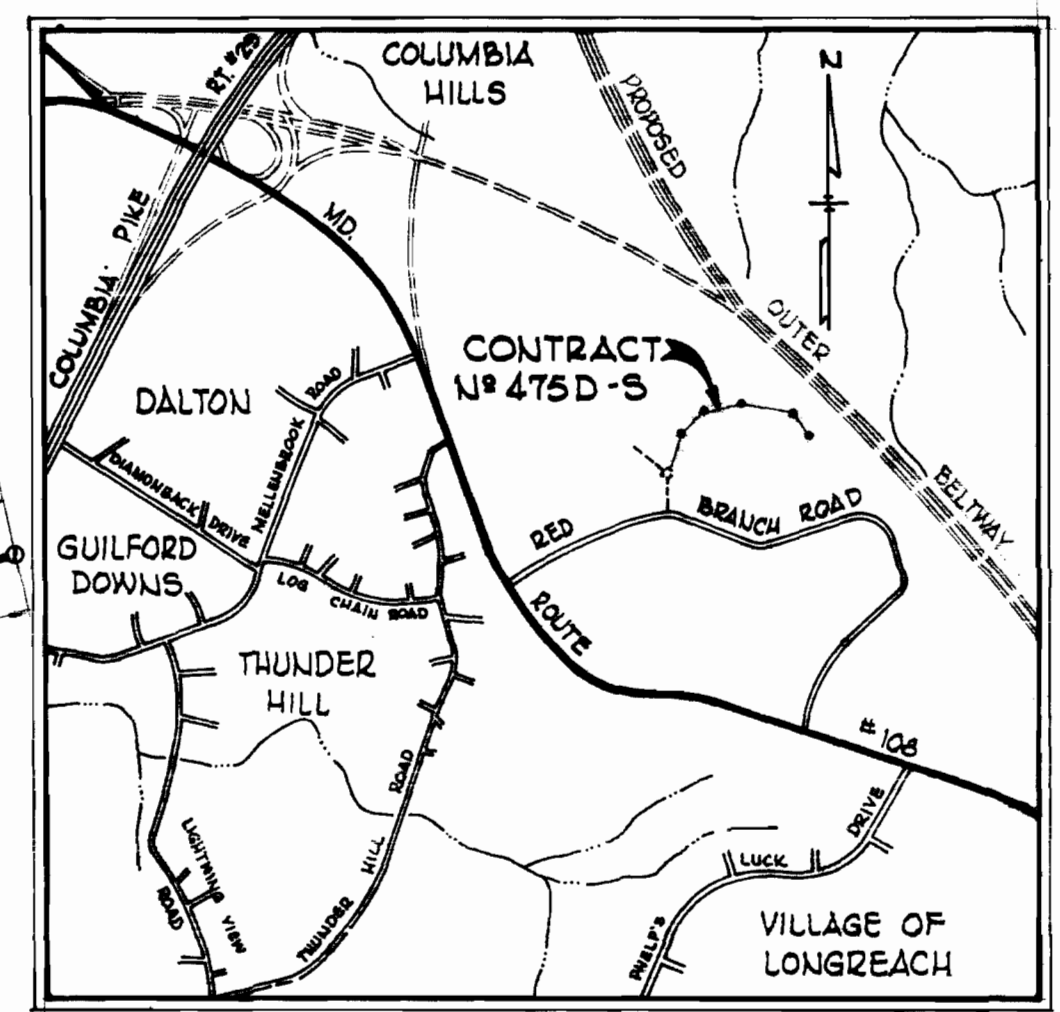
Rip Rap to consist of dense rocks of random shapes and sizes, resistant to the action of air and water, and suitable for bank protection. All rocks shall weigh a minimum of 150 pounds.

NOTE:  
 Poly Filter X shall be as manufactured by Carthage Mills, Inc. Erosion Control Division, 124 W. 66th Street, Cincinnati, Ohio, or approved equal



RIP-RAP DETAIL  
 Scale: 3/8"=1'-0"

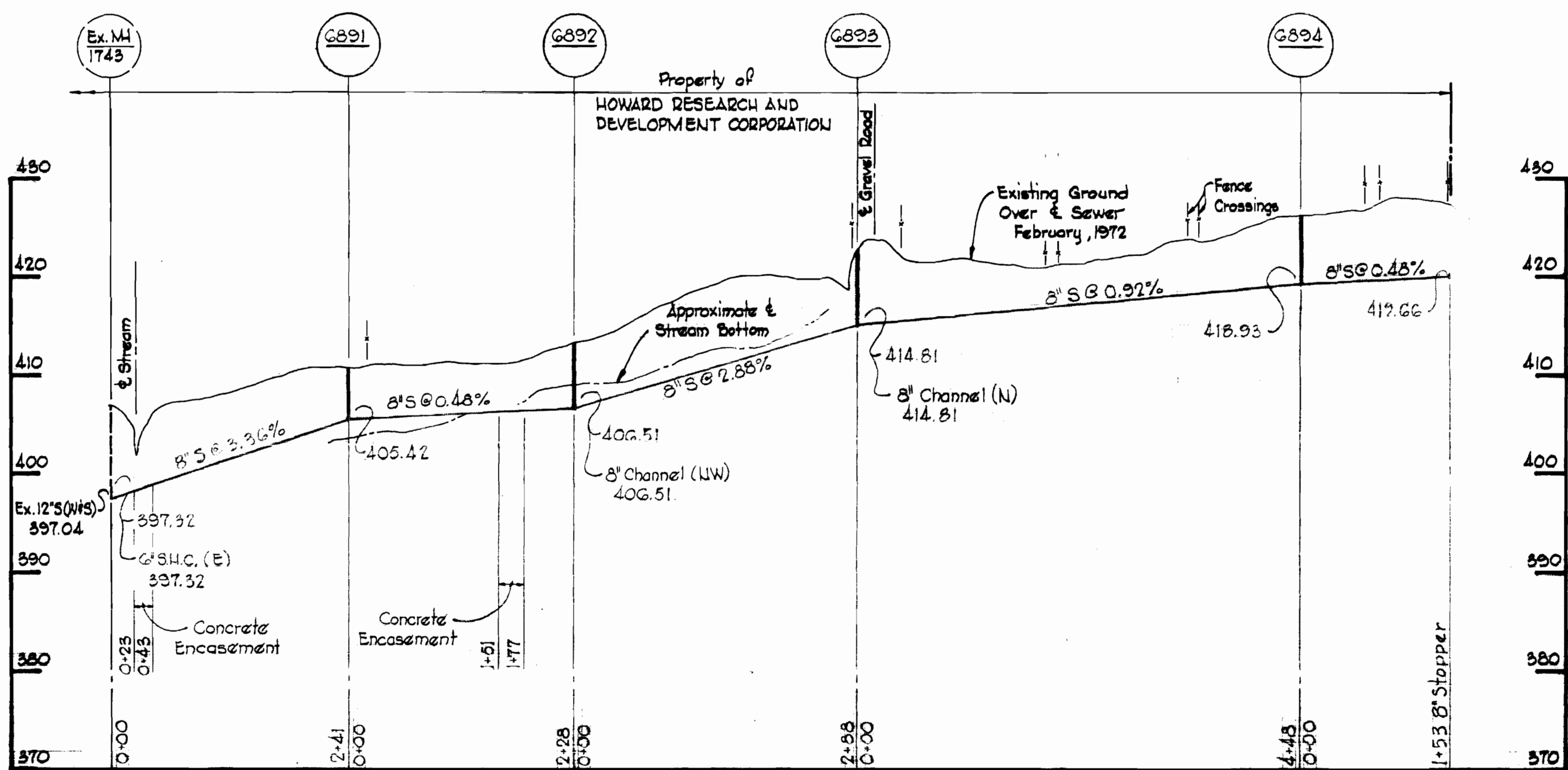
QUANTITIES	
8" Sewer	1360'
6" Sewer	185'



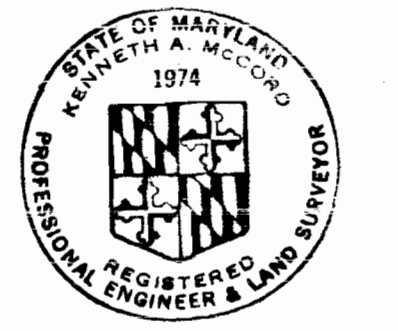
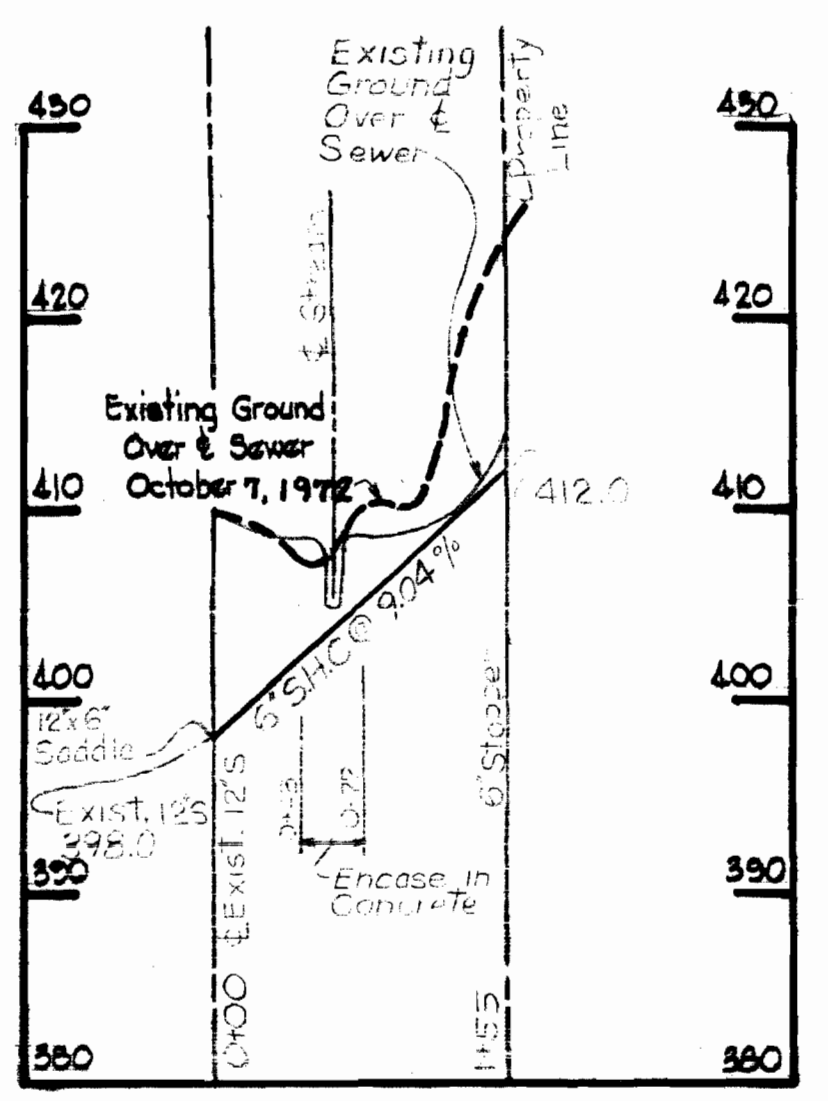
VICINITY MAP  
 Scale: 1"=1000'

GENERAL NOTES

1. Approximate location of existing main are shown. The Contractor shall take all necessary precautions to protect existing mains and service and maintain uninterrupted supply. Any damage incurred shall be repaired immediately.
2. All pipe elevations shown are invert elevations.
3. The Contractor shall locate existing utilities a minimum of two weeks in advance of construction operations in vicinity of utilities.
4. For all standard details see standards bound in Specifications.
5. Clear all utilities by a minimum of 6', clear all poles by a 2'-0" minimum, or tunnel as required unless otherwise noted.
6. The Contractor shall provide a joint in all sewer mains within 2'-0" of exterior manhole walls.
7. All manholes shall be 4'-0" inside diameter.
8. All horizontal and vertical controls are base on Maryland State Datum.



PROFILES  
 Scale: Horiz. 1"=100'  
 Vert. 1"=10'



Kenneth A. McLeod

Oakland Ridge Industrial Park  
 Lots 75 & 76  
 Contract U.C-475D-S

WHITMAN, REQUARDT & ASSOCIATES ENGINEERS 1304 ST. PAUL ST. BALTIMORE, MARYLAND	DEPARTMENT OF PUBLIC WORKS HOWARD COUNTY, MARYLAND 6-6-72 DATE <i>W.O. Filbert</i> CHIEF - BUREAU OF WATER AND SEWER	CONTRACT NO. C-475D-S	PLAN AND PROFILES OF SEWER MAINS	COLUMBIA OAKLAND RIDGE INDUSTRIAL PARK ELECTION DISTRICT - ELLICOTT CITY NO.2	DRAWING NO. 1 OF 1 SCALE AS SHOWN 510-486 505-486 510-487 PB# 86359
---	---	-----------------------	-------------------------------------	---	--

W. O. 3546

As-BUILT Nov. 6, 1972

MAY 18, 1972

1/C-S/L CM

BRUNING 44-510 14778