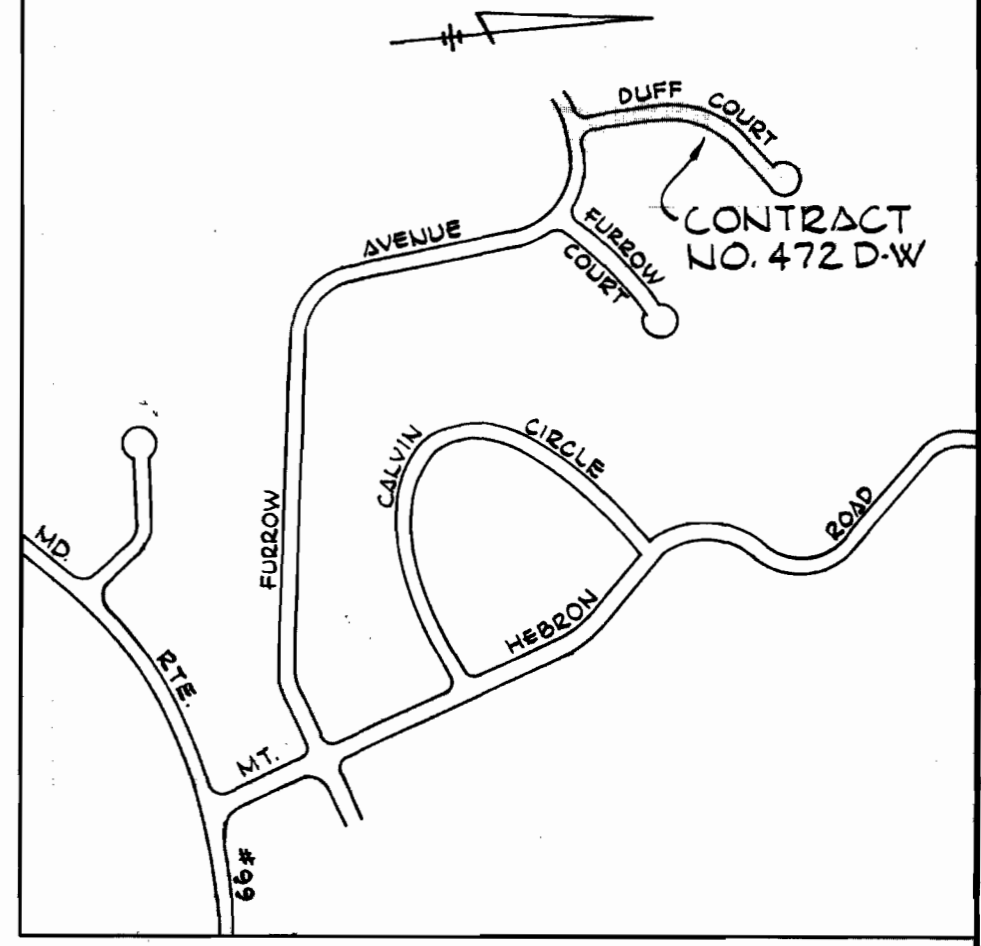
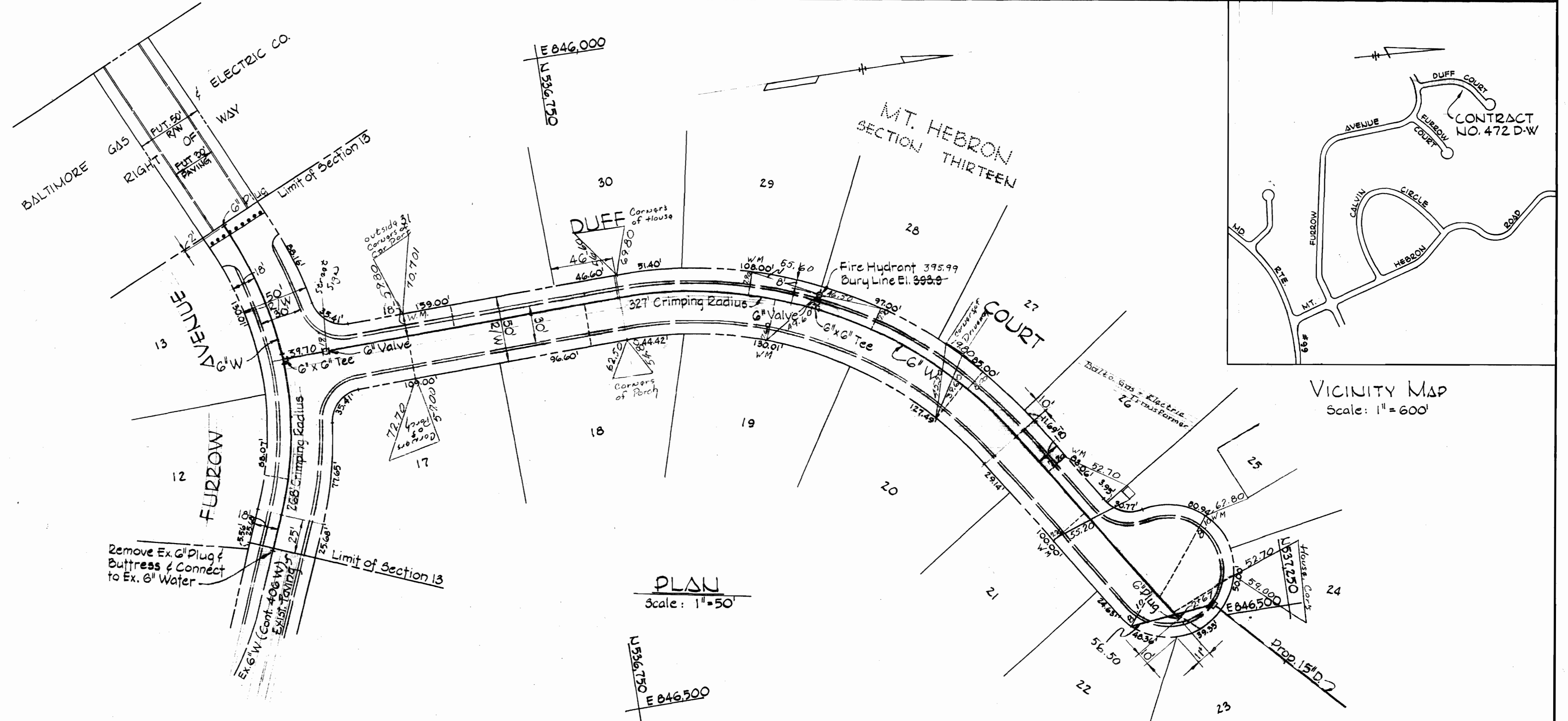
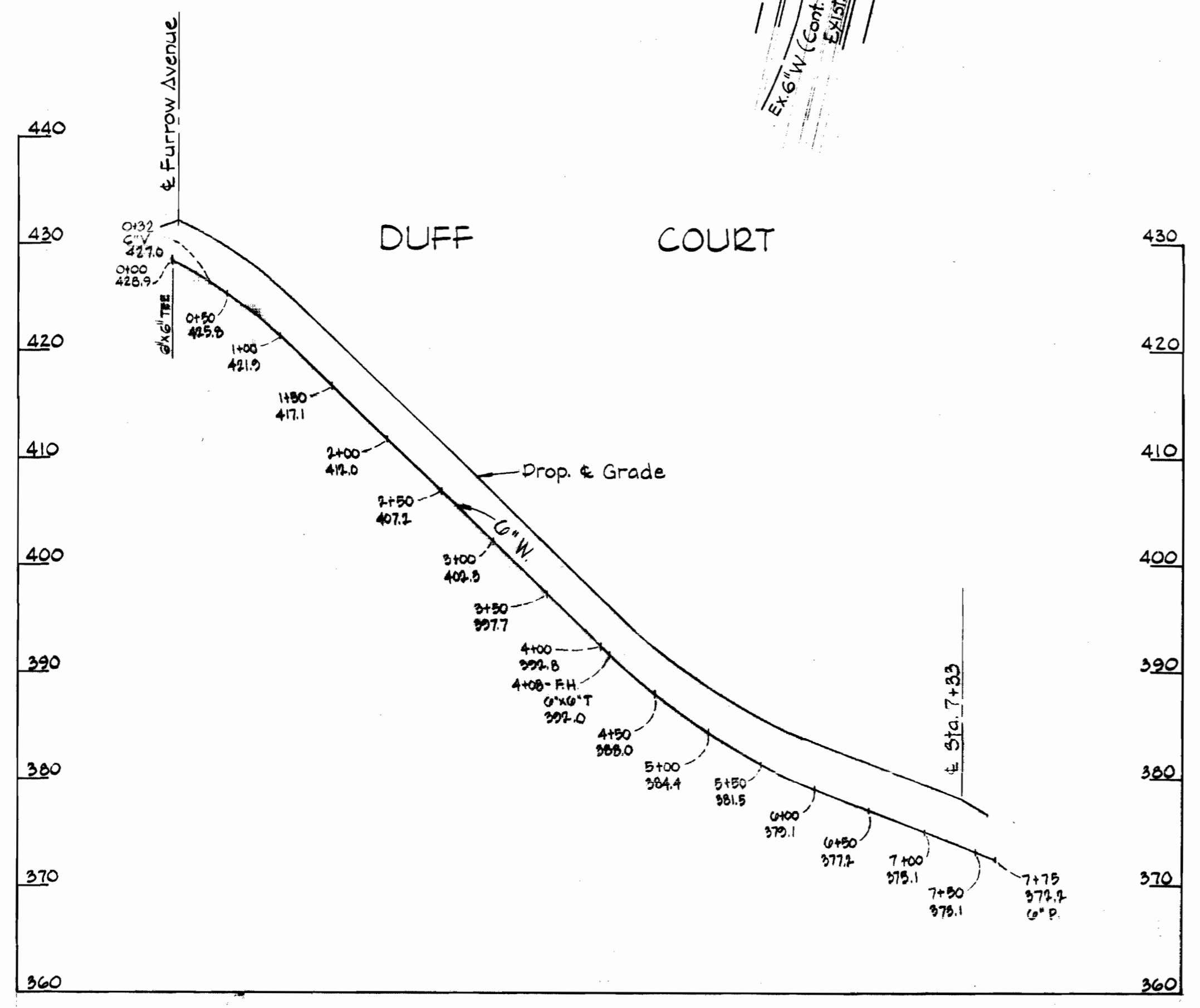


GENERAL NOTES

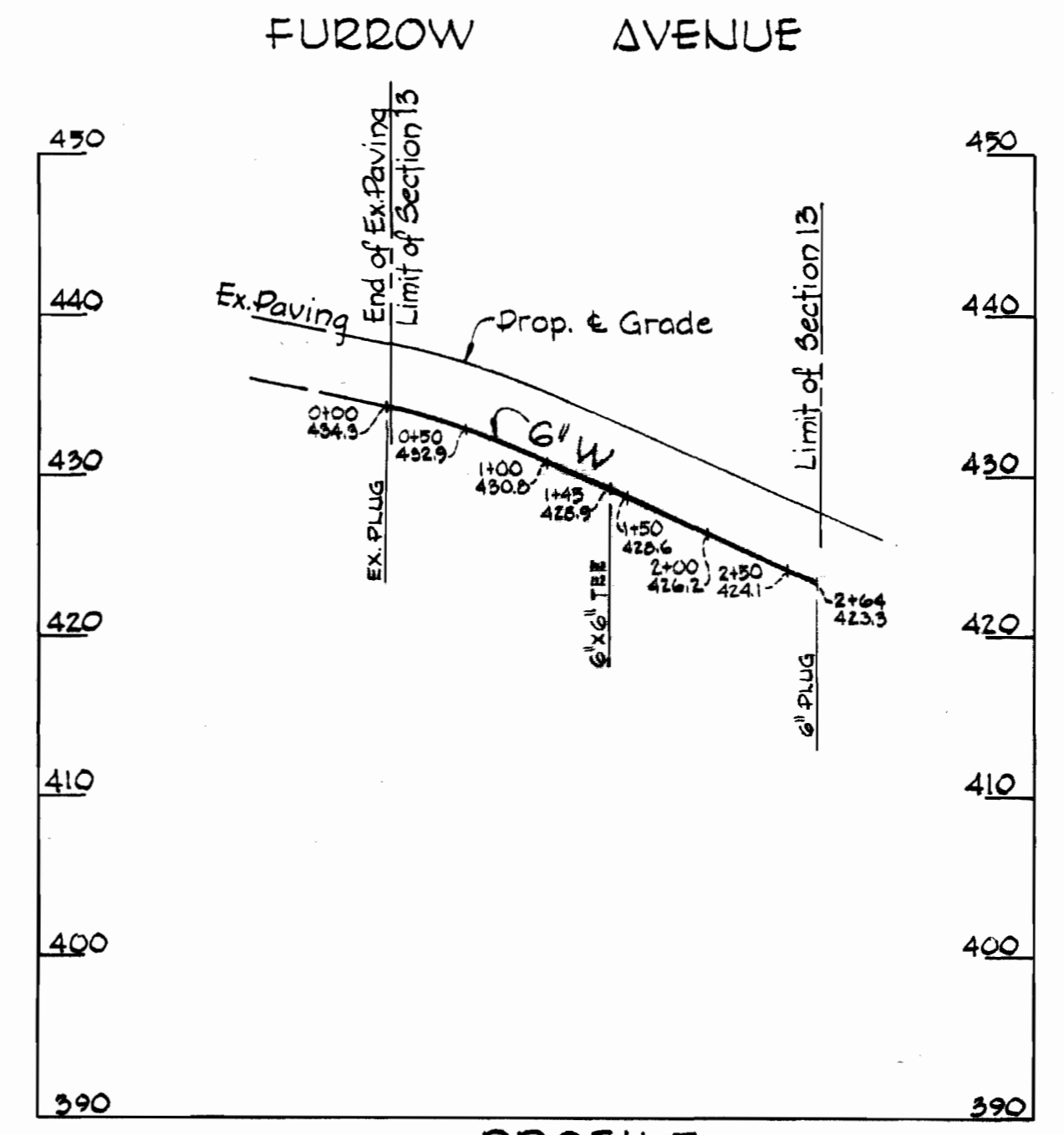
- 1) Approximate location of existing mains are shown. The Contractor shall take all necessary precautions to protect existing mains and services and maintain uninterrupted supply. Any damage incurred shall be repaired immediately.
- 2) All pipe elevations shown are invert elevations.
- 3) The Contractor shall locate existing utilities a minimum of two weeks in advance of construction operations in vicinity of utilities.
- 4) For all standard details see standards bound in Specifications.
- 5) All water mains shall have a minimum of 3 1/2' cover.
- 6) Block all fittings with concrete, see standards bound in Specifications.
- 7) Bury Line elevations on fire hydrants shall be set to the elevations shown on the drawings.
- 8) Cost of strapping fire hydrants and valves to be included in the unit price bid for furnishing and installing fire hydrants.
- 9) All fire hydrants shall be strapped to the tee and shall be buttressed with concrete in accordance with Standard Details.
- 10) Clear all utilities by a minimum of 6", clear all poles by 2'-0" minimum or tunnel as required.
- 11) All vertical and horizontal controls are based on Maryland State Datum.



PLAN
Scale: 1" = 50'



PROFILE
Scale: Hor: 1" = 100'
Vert: 1" = 10'



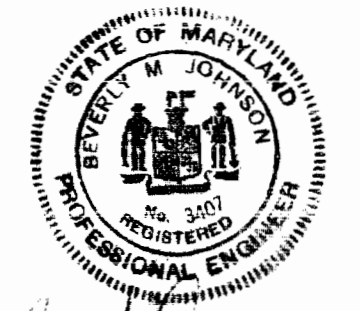
PROFILE
Scale: Hor: 1" = 100'
Vert: 1" = 10'

BENCH MARKS

- 1" x 2" Road Side Bonnet Bolt of Fire Hydrant Furrrow Ave El. 469.36
- 2" x 2" Spike Set in G' F #281124 @ Limit of Furrrow Ave El. 446.52

QUANTITIES

6" Water	1040 LF
Fire Hydrants	1 EA



Beverly M. Johnson
BEVERLY M. JOHNSON, REG #3407

PURDUM & JESCHKE
ENGINEERS
1023 N. CALVERT ST.
BALTIMORE, MARYLAND

DEPARTMENT OF PUBLIC WORKS
HOWARD COUNTY, MARYLAND
DATE: 2-14-72
W. O. F. Chief - Bureau of Water and Sewer

CONTRACT NO. 472 D - W

PLAN AND PROFILE OF
WATER MAINS

MT. HEBRON: SECTION NO. 13
ELECTION DISTRICT NO. 2

DRAWING NO. 1 OF 1
SCALE AS SHOWN

As Build 6-6-72

WS 472 W/1