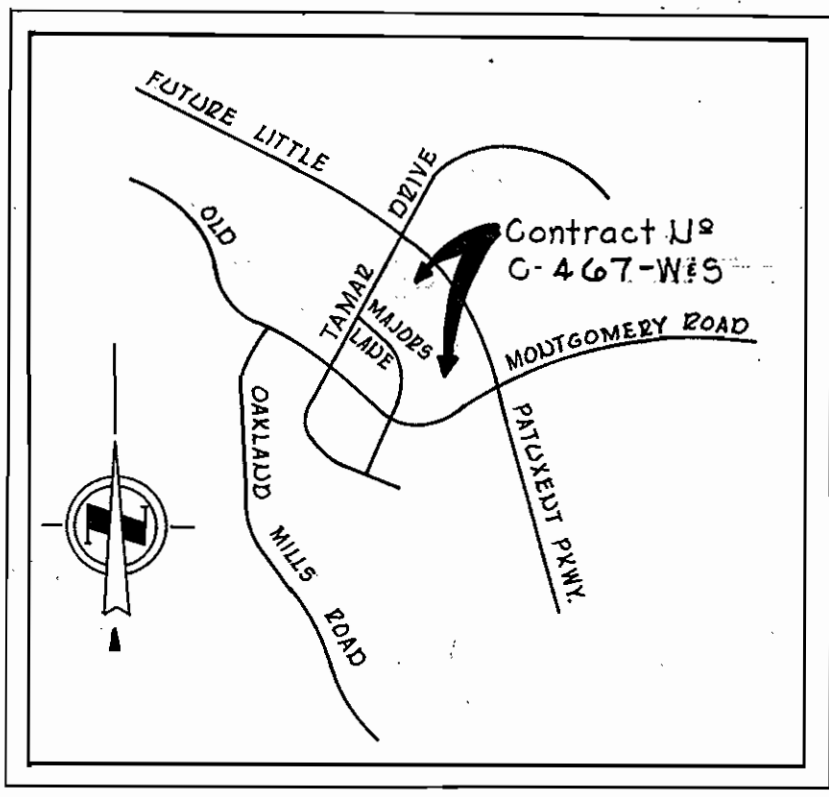
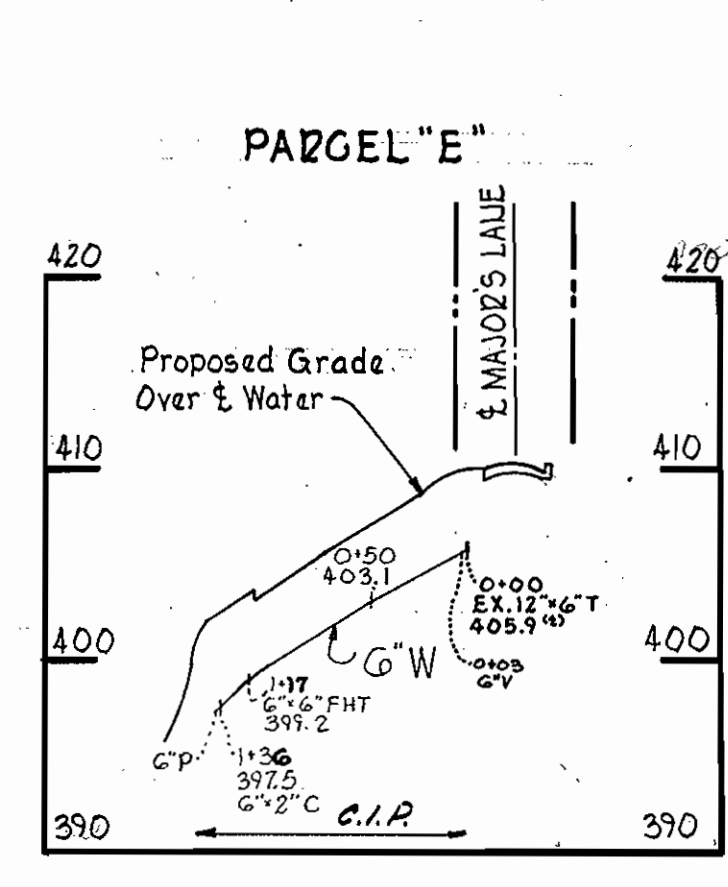
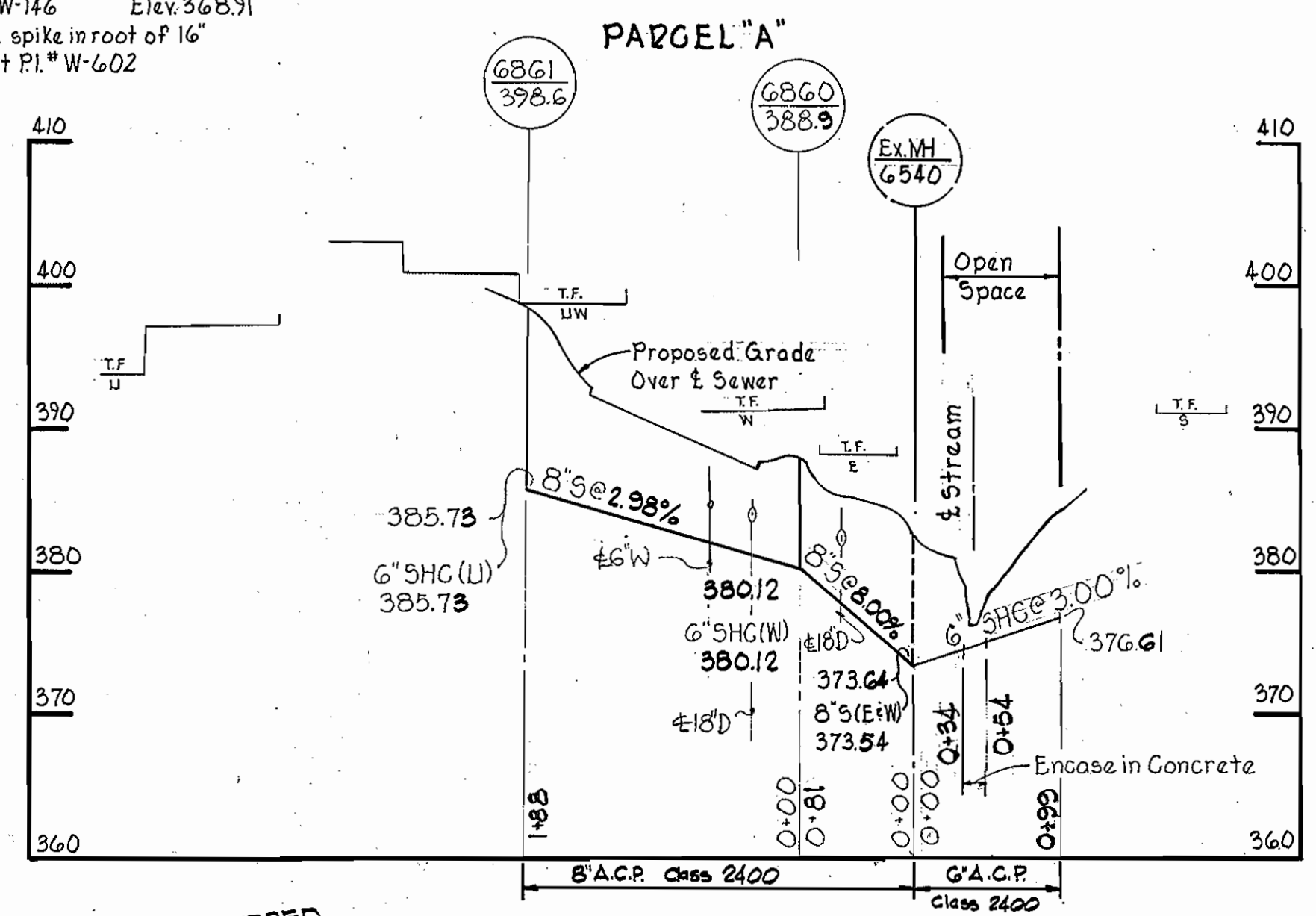


WZ.F.A. B.M. W-146 Elev. 368.91
 Railroad spike in root of 16'
 Poplar at Pl. W-602

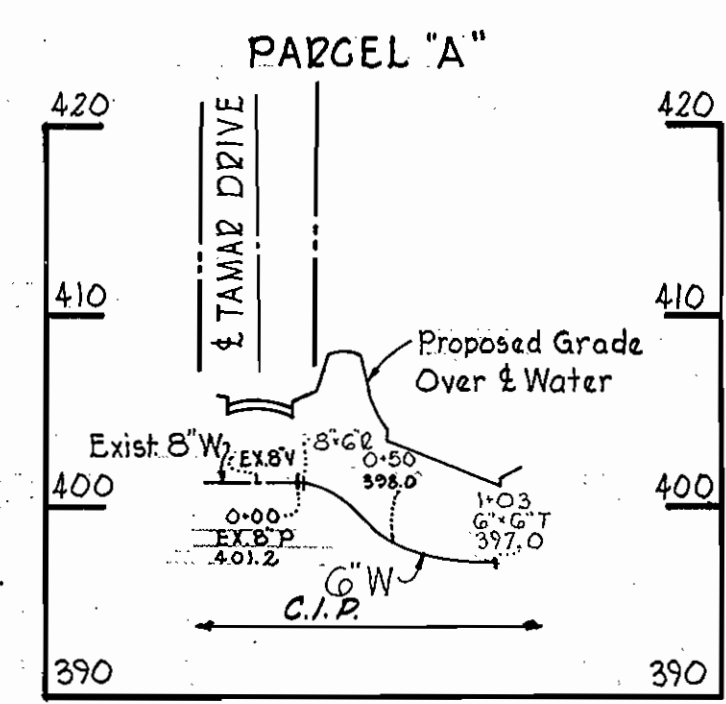
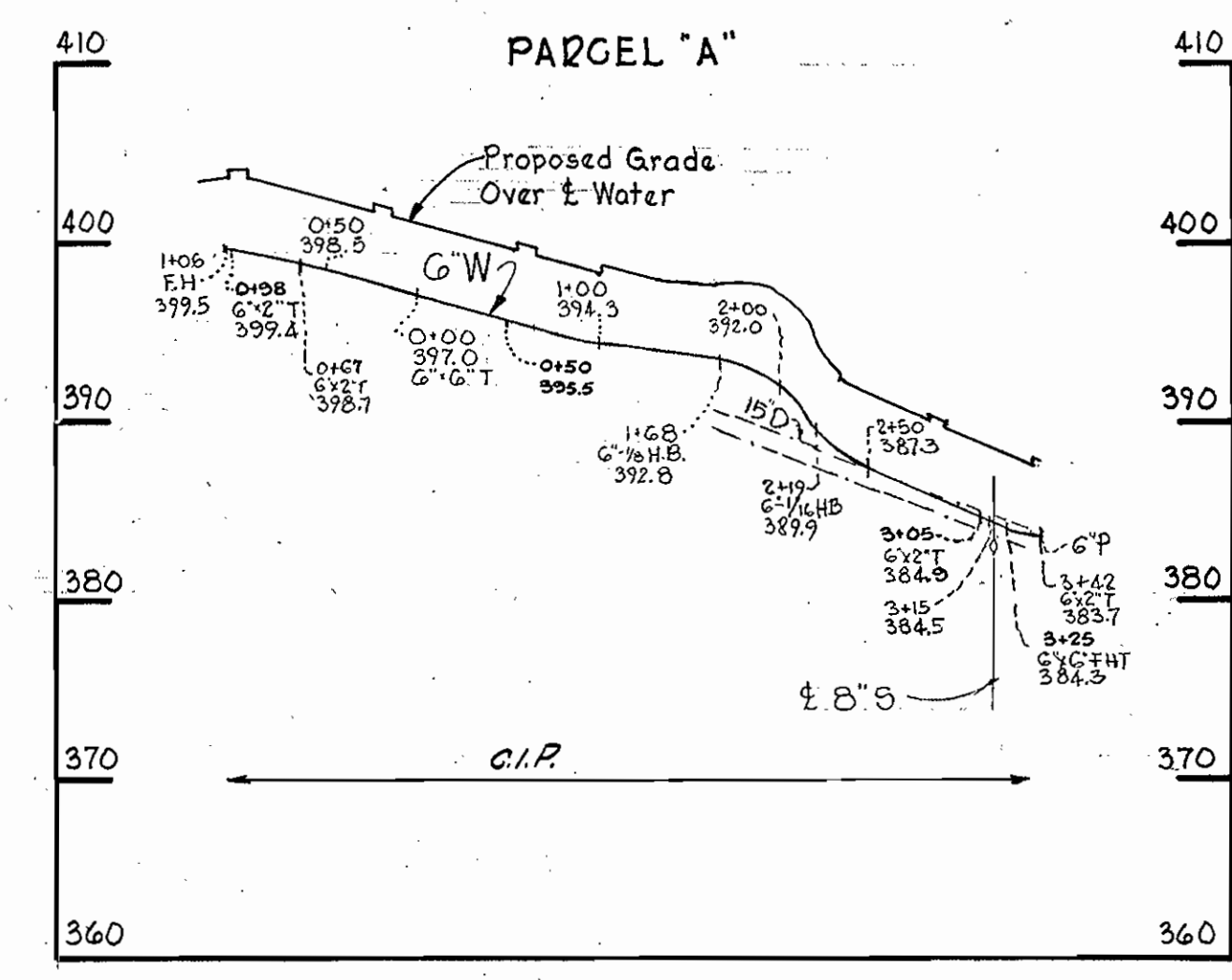


VICINITY MAP
 Scale: 1"=2000'

M & H F.H.'s USED

GENERAL NOTES

1. Approximate location of existing mains are shown. The Contractor shall take all necessary precautions to protect existing mains and services and maintain uninterrupted supply. Any damage incurred shall be repaired immediately.
2. All pipe elevations are invert elevations.
3. The Contractor shall locate existing utilities a minimum of two weeks in advance of construction operations in vicinity of utilities.
4. For all standard details see standards bound in Specifications.
5. Clear all utilities by a minimum of 6", clear all poles by a 2'-0" minimum or tunnel as required.
6. The Contractor shall provide a joint in all sewer mains within 2'-0" of exterior manhole walls.
7. All manholes shall be 4'-0" inside diameter.
8. All water mains to have a minimum of 3 1/2' cover unless otherwise noted.
9. Block all fittings with concrete, see standards bound in Specifications.
10. Bury line elevations on fire hydrants shall be set to the elevations shown on the drawings.
11. All fire hydrants shall be strapped to the tee and shall be buttressed with concrete in accordance with standard details.
12. All horizontal and vertical controls are based on Maryland State Datum.

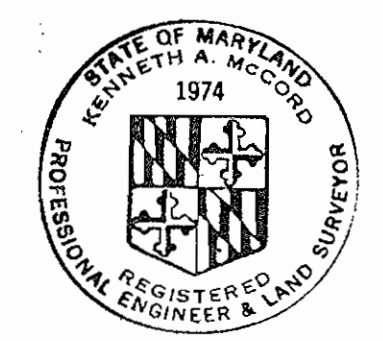


PROFILES
 Scales: Hor: 1"=100'
 Vert: 1"=10'

NO. OF DWELLING UNITS - 288

QUANTITIES	
6" Water	700
6" Water	690
6" Sewer	400
Fire Hydrants	4

STAKEOUT & DIARY
 FB.# 5175



Kenneth A. McCord

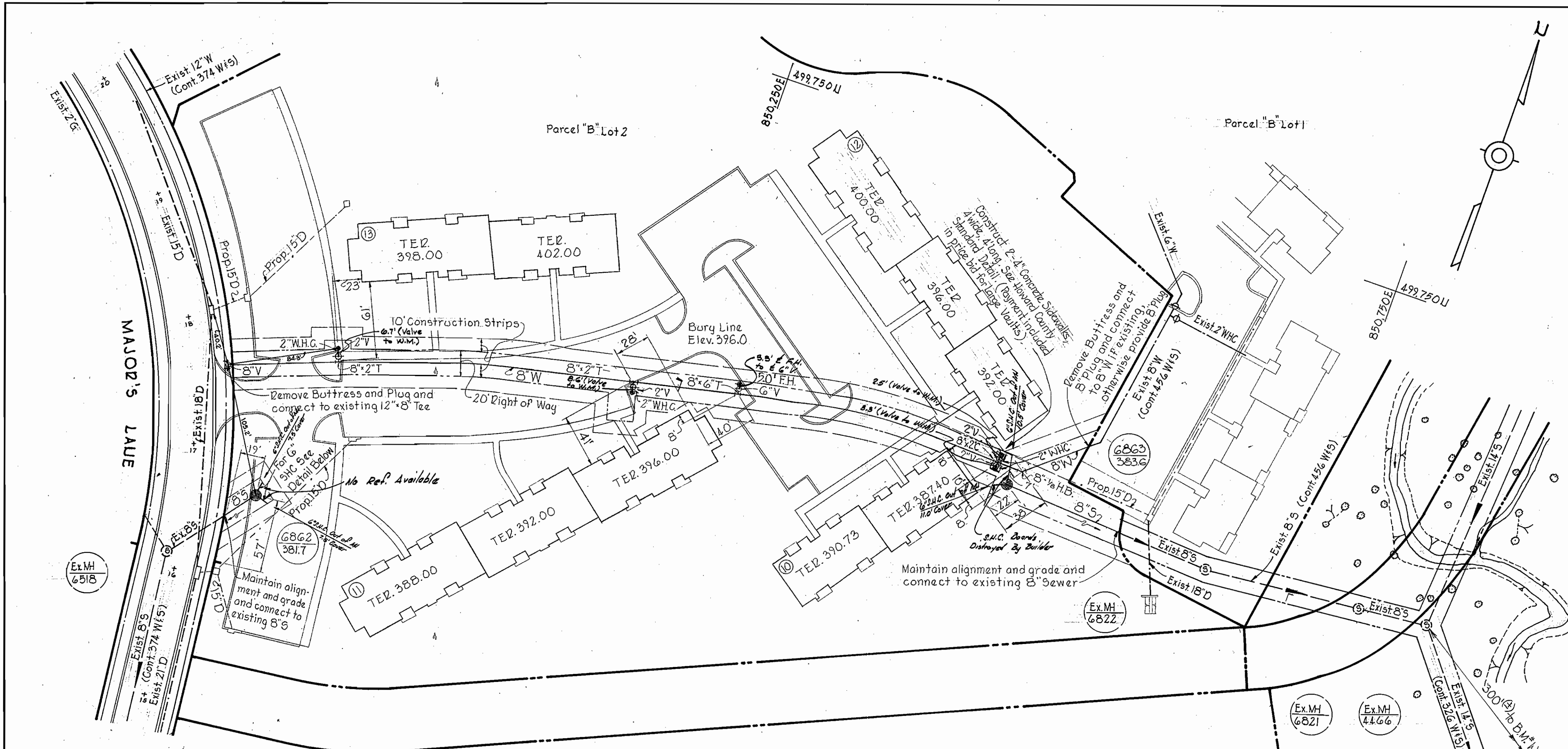
Village of Longreach
 Jeffer's Hill
 Section 1, Area 2
 Parcels A, E, F Lot 2
 Contract UP C-467 W/S

WHITMAN, REQUARDT & ASSOCIATES ENGINEERS 1304 ST. PAUL ST. BALTIMORE, MARYLAND	DEPARTMENT OF PUBLIC WORKS HOWARD COUNTY, MARYLAND 2-21-72 DATE <i>W. O. Felber</i> CHIEF - BUREAU OF WATER AND SEWER	CONTRACT NO. C-467 W/S	PLAN AND PROFILES OF WATER & SEWER MAINS	COLUMBIA VILLAGE OF LONGREACH ELECTION DISTRICT GUILFORD NO. 6	DRAWING NO. 1 OF 2	SCALE AS SHOWN 1/4"=1'-0" 1/8"=1'-0"
					499-486 500-486	

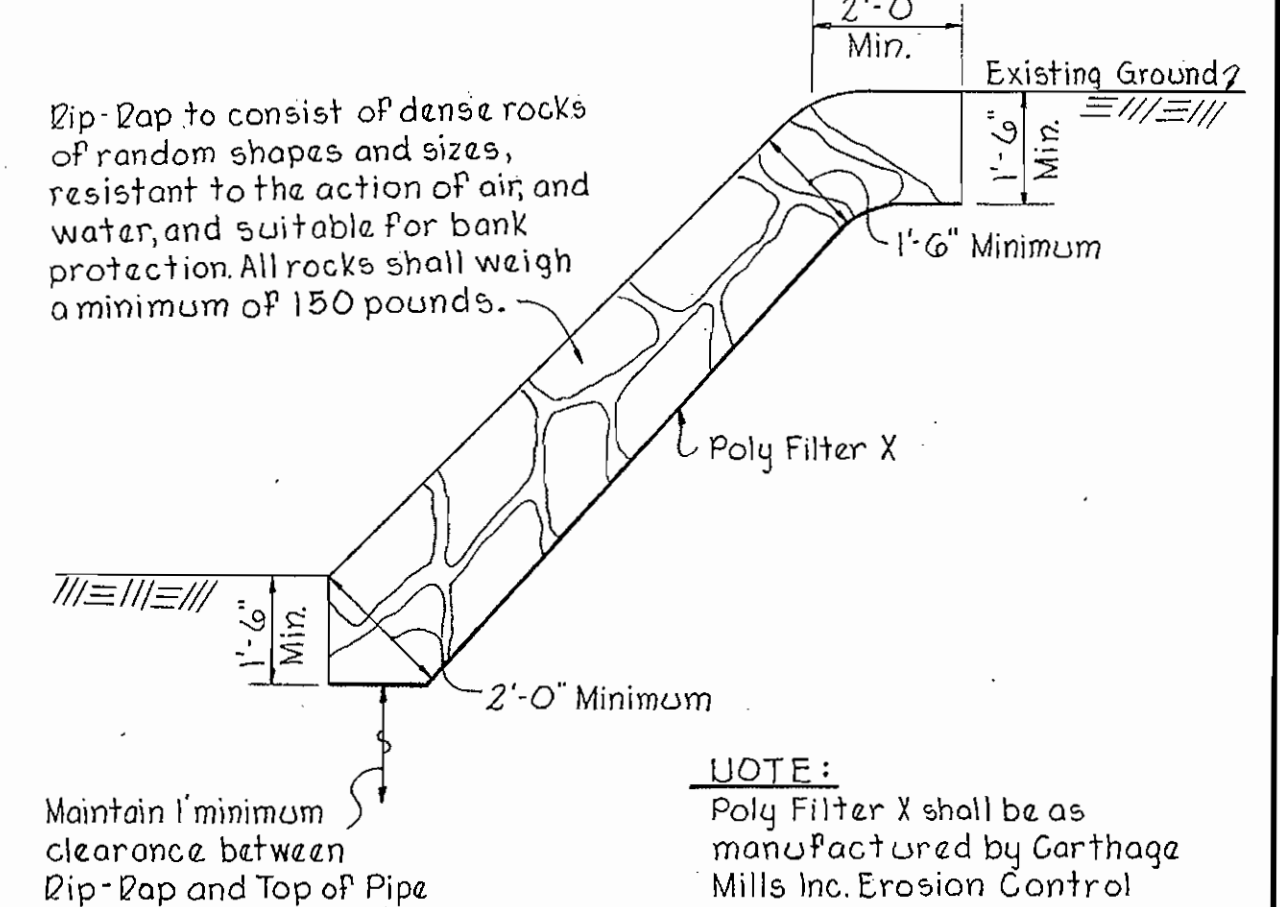
W.O. 6023-2

Dec. 14, 1972 AS BUILT

WS 467-W/S/1

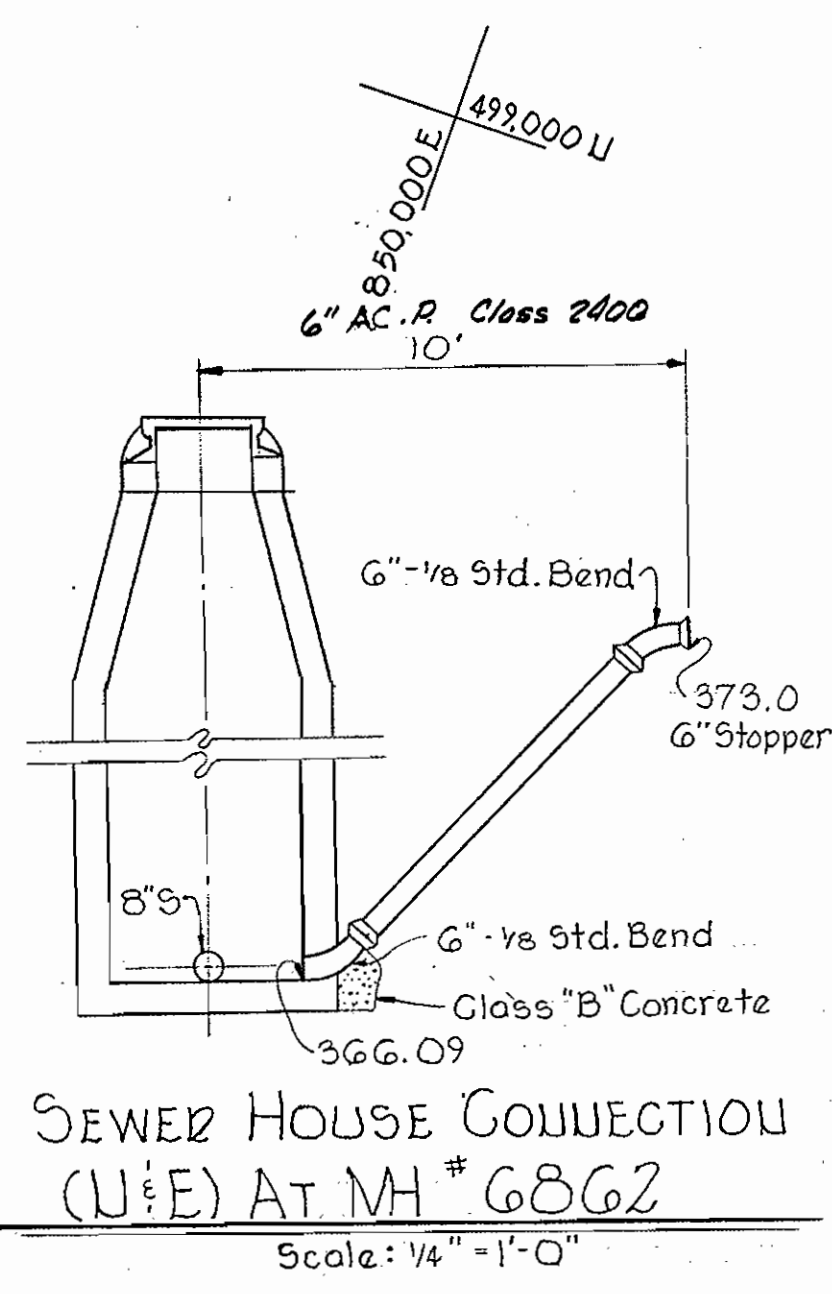


PLAN
Scale: 1"=50'

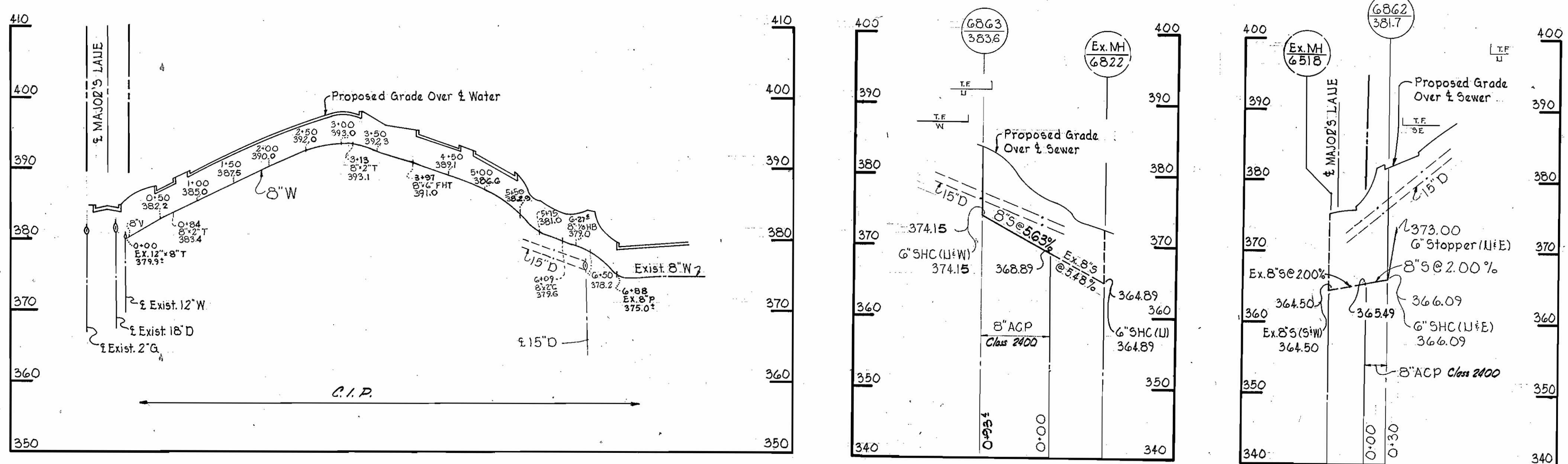


RIP RAP DETAIL
Scale: 3/8"=1'-0"

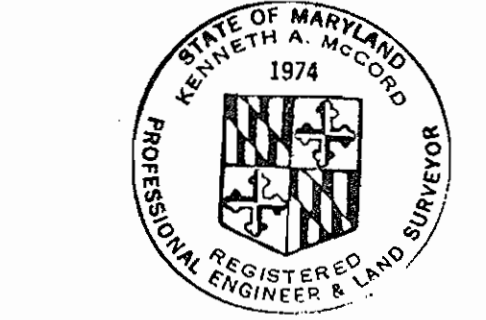
W.Z.A. B.M.*W-95 Elev. 356.84
Railroad spike in base of
18' Twin Poplar near
P.I. # W-361



SEWER HOUSE CONNECTION (U/E) AT MH # G862
Scale: 1/4"=1'-0"



PROFILE
Scale: Hor: 1"=100'
Vert: 1"=10'



Village of Longreach
Jeffers Hill
Section 1, Area 2
Parcels 'A', 'E', 'B' Lot 2
Contract U-467-W15

WHITMAN, REQUARDT & ASSOCIATES ENGINEERS 1304 ST. PAUL ST. BALTIMORE, MARYLAND	DEPARTMENT OF PUBLIC WORKS HOWARD COUNTY, MARYLAND 2-21-72 W. O. Filbert CHIEF - BUREAU OF WATER AND SEWER	CONTRACT NO. C-467W8S	PLAN AND PROFILES OF WATER & SEWER MAINS	COLUMBIA VILLAGE OF LONGREACH ELECTION DISTRICT GUILFORD NO. 6	DRAWING NO. 2 OF 2 SCALE AS SHOWN 499-486 499-487
--	---	------------------------------	---	---	--

W. O. 6023-2

Dec 14, 1972 AS BUILT

WS 467-W8S/2