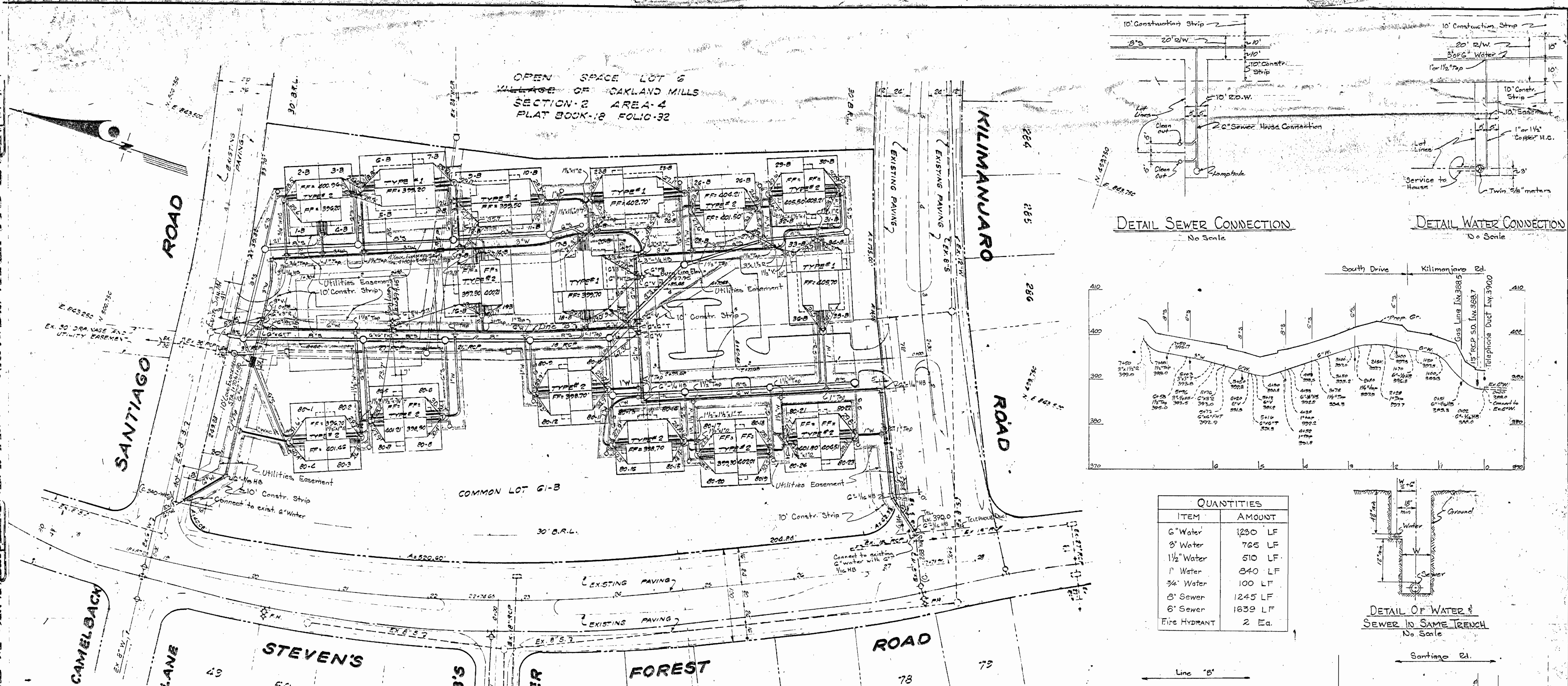
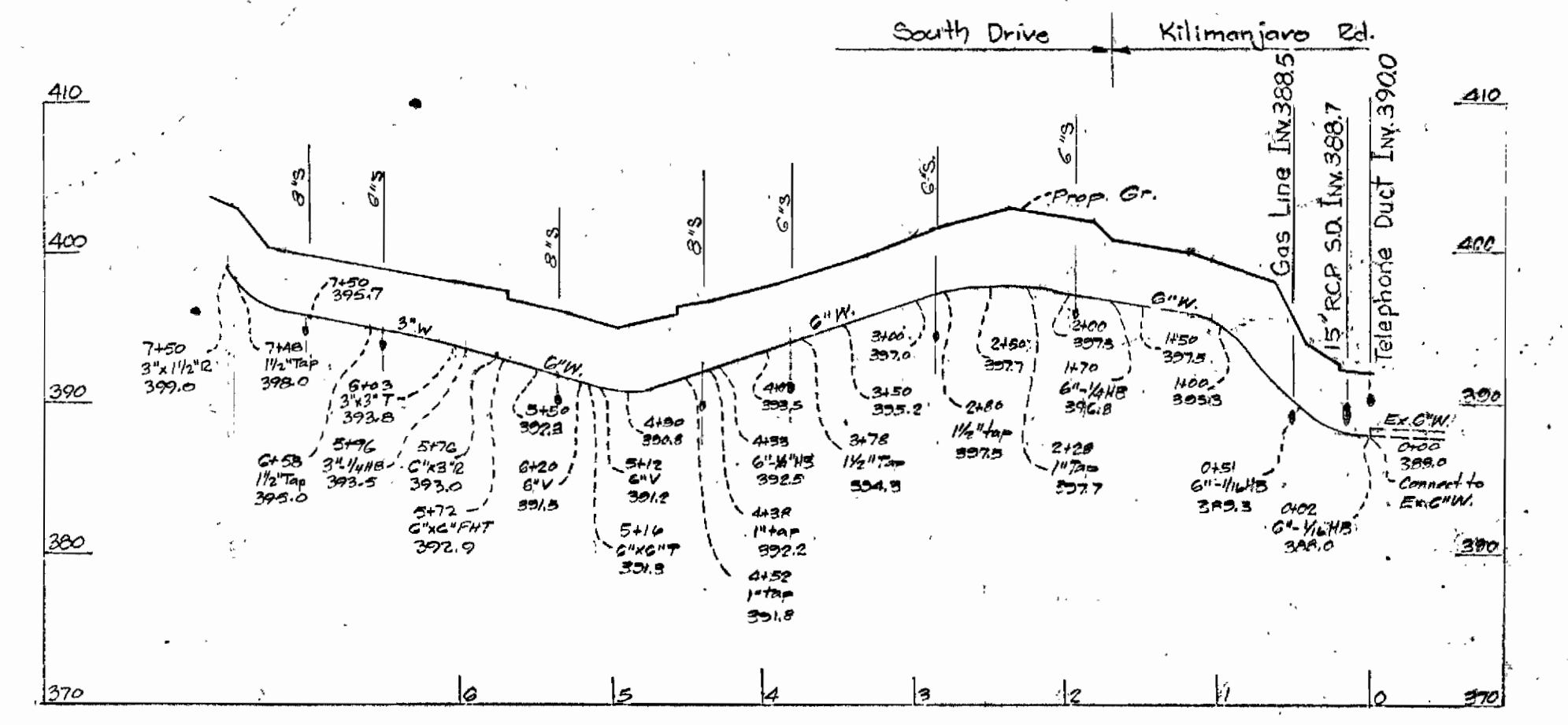


OPEN SPACE LOT 6  
VILLAGE OF OAKLAND MILLS  
SECTION 2 AREA 4  
PLAT BOOK 18 FOLIO 32

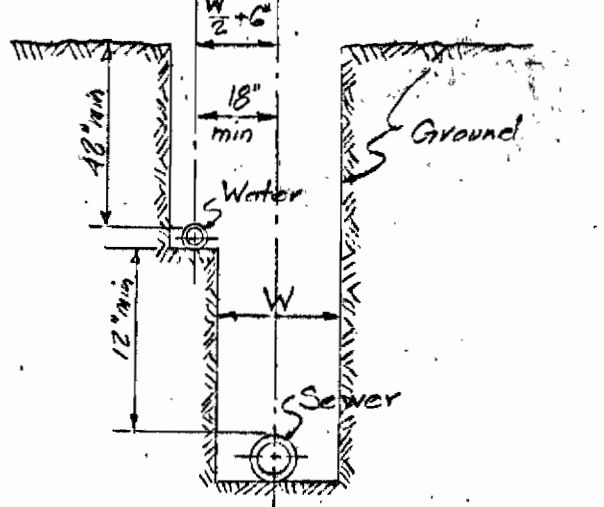


DETAIL SEWER CONNECTION  
No Scale

DETAIL WATER CONNECTION  
No Scale



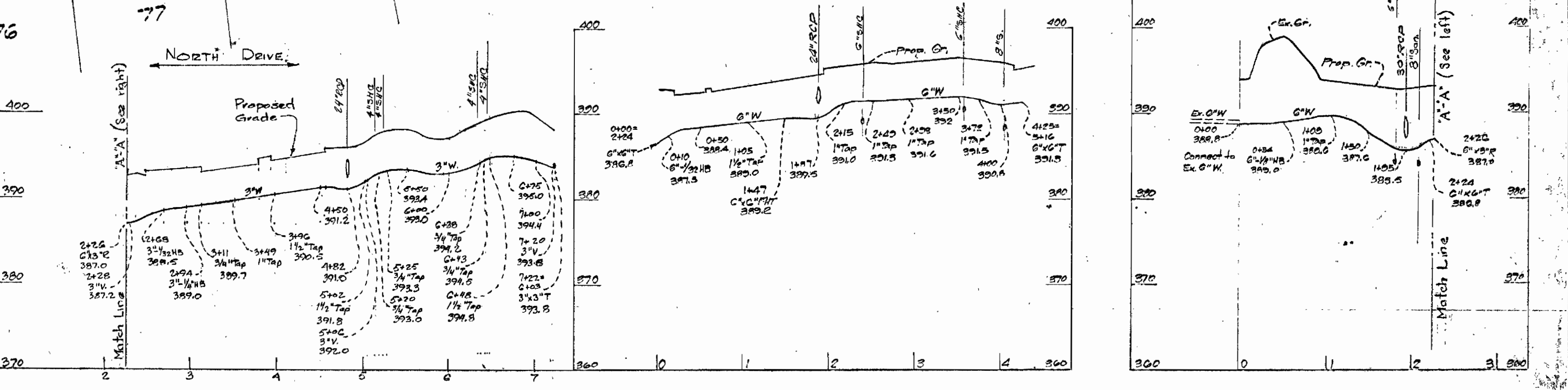
QUANTITIES	
ITEM	AMOUNT
6" Water	1230 LF
8" Water	765 LF
1 1/2" Water	510 LF
1" Water	340 LF
3/4" Water	100 LF
8" Sewer	1245 LF
6" Sewer	1839 LF
Fire HYDRANT	2 Ea.



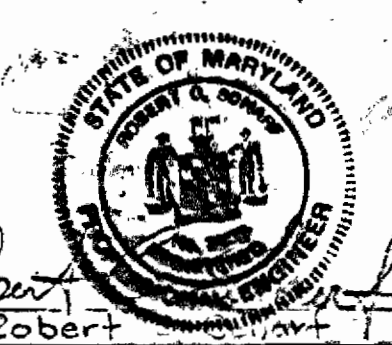
DETAIL OF WATER & SEWER IN SAME TRENCH  
No Scale

- WATER NOTES**
- 1) Location of existing water from plans by Whitman, Requiardt & Assoc.
  - 2) All water mains to be laid with a minimum of 3.5' cover unless otherwise noted.
  - 3) For details of dual house connections see detail right this sheet.
  - 4) All water house connections shall have valves.
  - 5) All construction & materials shall be in accordance with Howard County Standards.
  - 6) Contractor shall verify location & elevation of all existing utility lines @ least 2 weeks before proceeding with this construction.
  - 7) Contractor shall verify location of W.H. & S.H. connections @ buildings before proceeding with construction of onsite facilities.
  - 8) All water mains shall be C.I.P., D.I.P. or A.C.P.X. unless otherwise noted.
  - 9) All 1 1/2" & 1" water to be copper, type "K".
  - 10) All W.H.C.'s to be 3/4" copper, type "K".
  - 11) All W. & S.H. connections to be laid in same trench, see detail right.
  - 12) All fittings to be blocked with concrete, see standards bound in specifications.
  - 13) Contractor shall take all necessary precautions to protect existing mains & service connections and maintain uninterrupted supply. Any damage incurred shall be repaired immediately.
  - 14) All pipe elevations shown are invert elevations.
  - 15) For all standard details see standards bound in specifications.
  - 16) Clear all utilities by a minimum of 6', all poles by a minimum of 2'-0" or tunnel as required.
  - 17) Fire hydrants shall be set @ the bury line elevations shown on drawings.
  - 18) Fire hydrants shall be strapped to trees and buttressed with concrete in accordance with standard details.
  - 19) All valves shall be strapped to trees in accordance with standard details.
  - 20) Costs of strapping fire hydrants & valves to trees shall be included in the unit price bid for furnishing & laying of water mains.

- PLAN**  
Scale: 1"=50'
- 21) Contractor shall notify The Balto. Gas & Electric Co. 72 hours in advance of excavation by calling 301-639-8000 Ext. 69.
  - 22) Contractor shall notify the C & R Telephone Co. prior to any construction in the vicinity of any telephone Co. facilities by calling collect 301-685-0400 in Balto. Md.
  - 23) All water meters to be either twin 3/8" meters (Furnished by others) or single 3/2" meters (Furnished by others) as indicated.
  - 24) Single meters shown thus (⊙)  
Twin meters shown thus (⊗)
  - 25) Hydraulic Gradient = 700'
  - 26) Coordinates shown are based on Maryland State Datum.



PROFILE  
Scale: 1"=100' VERT 1"=10'



GREENHORNE & O'MARA, INC.  
ENGINEERS - ARCHITECTS - PLANNERS  
SURVEYORS  
6715 KENILWORTH AVENUE  
RIVERDALE, MARYLAND

HOWARD COUNTY DEPARTMENT OF PUBLIC WORKS  
1-13-72  
Date  
C/O Robert  
Chief Engineer

CONTRACT NO. 464-D-W&S

PLAN & PROFILES  
WATER MAINS

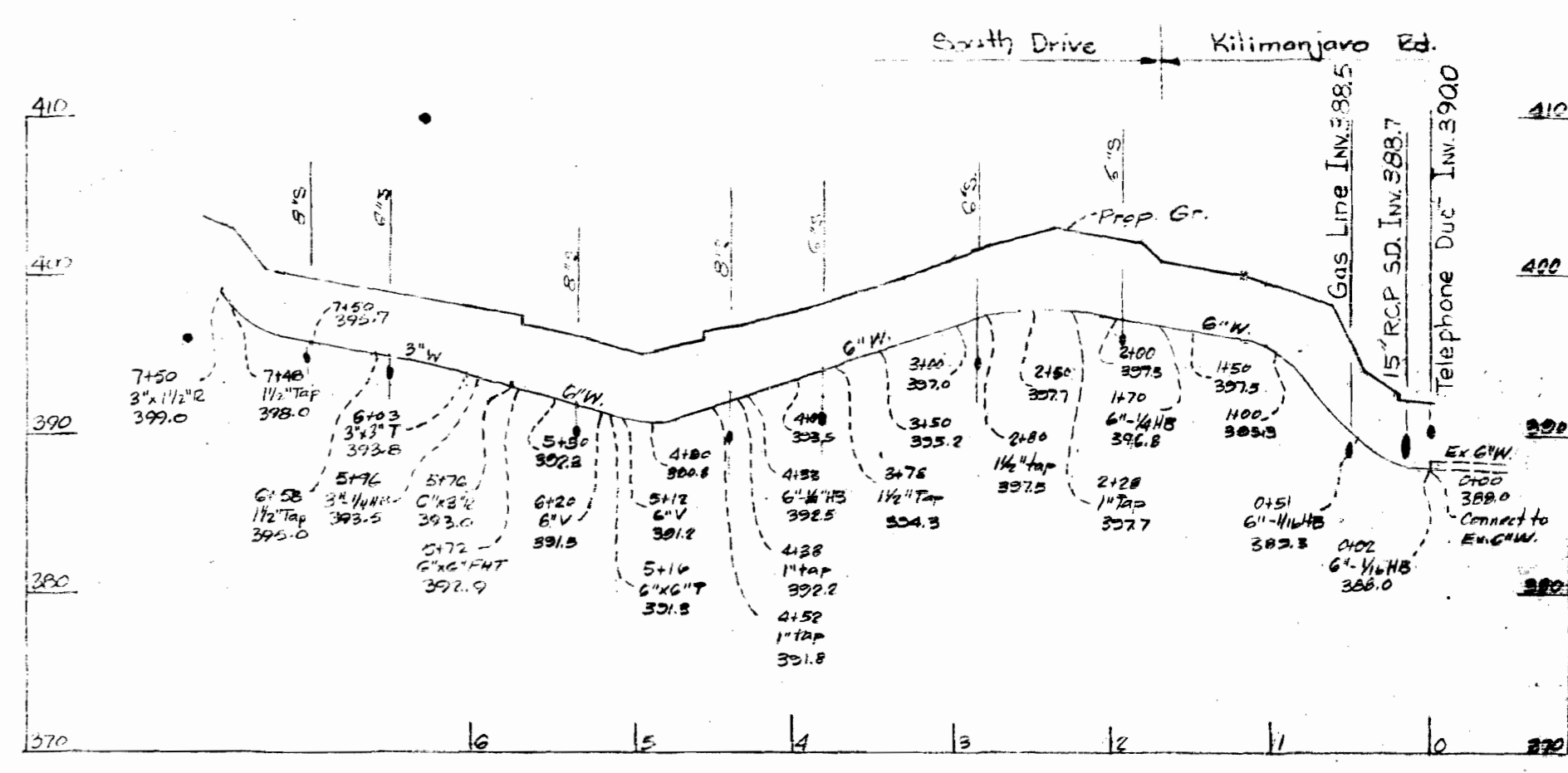
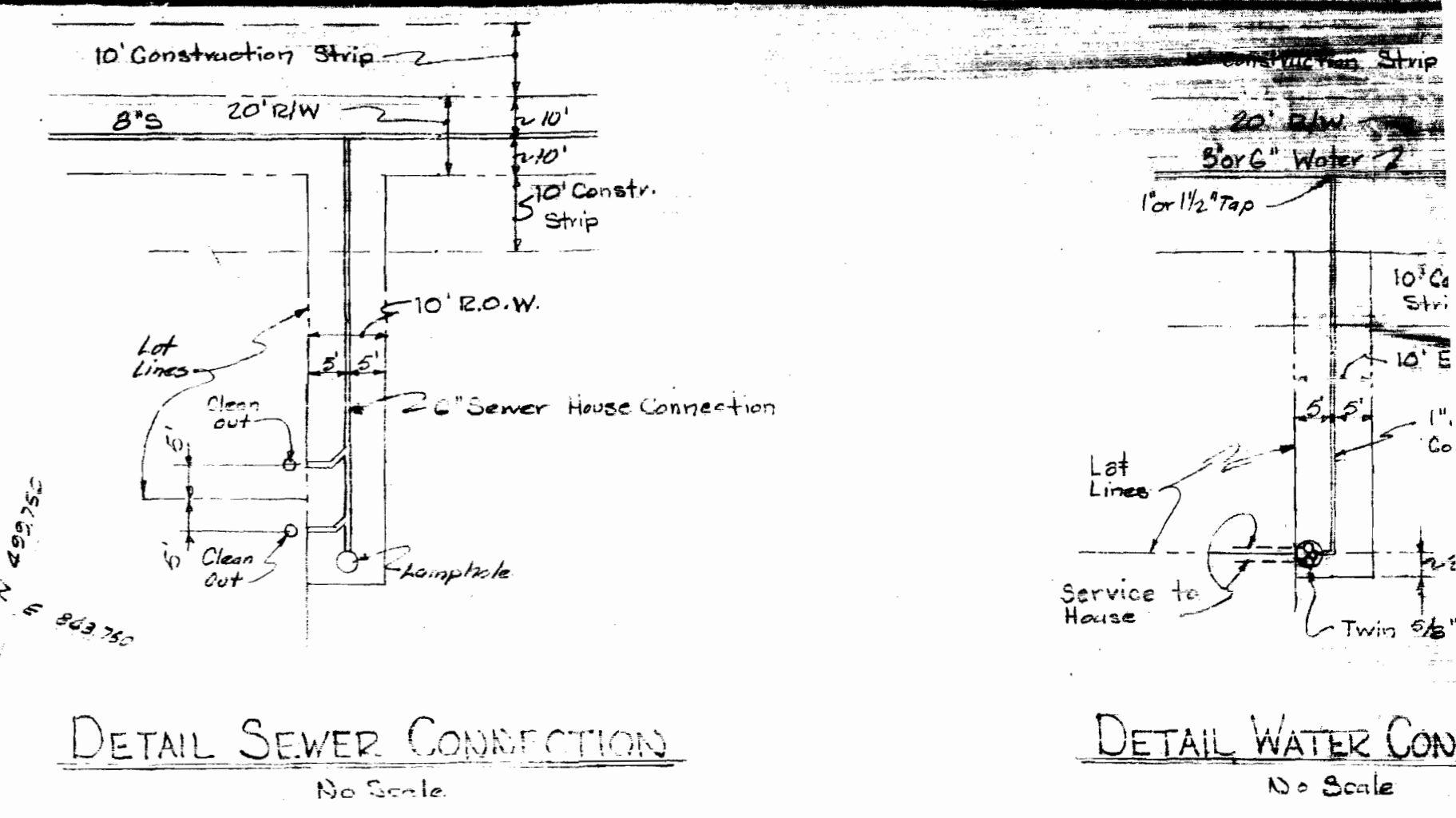
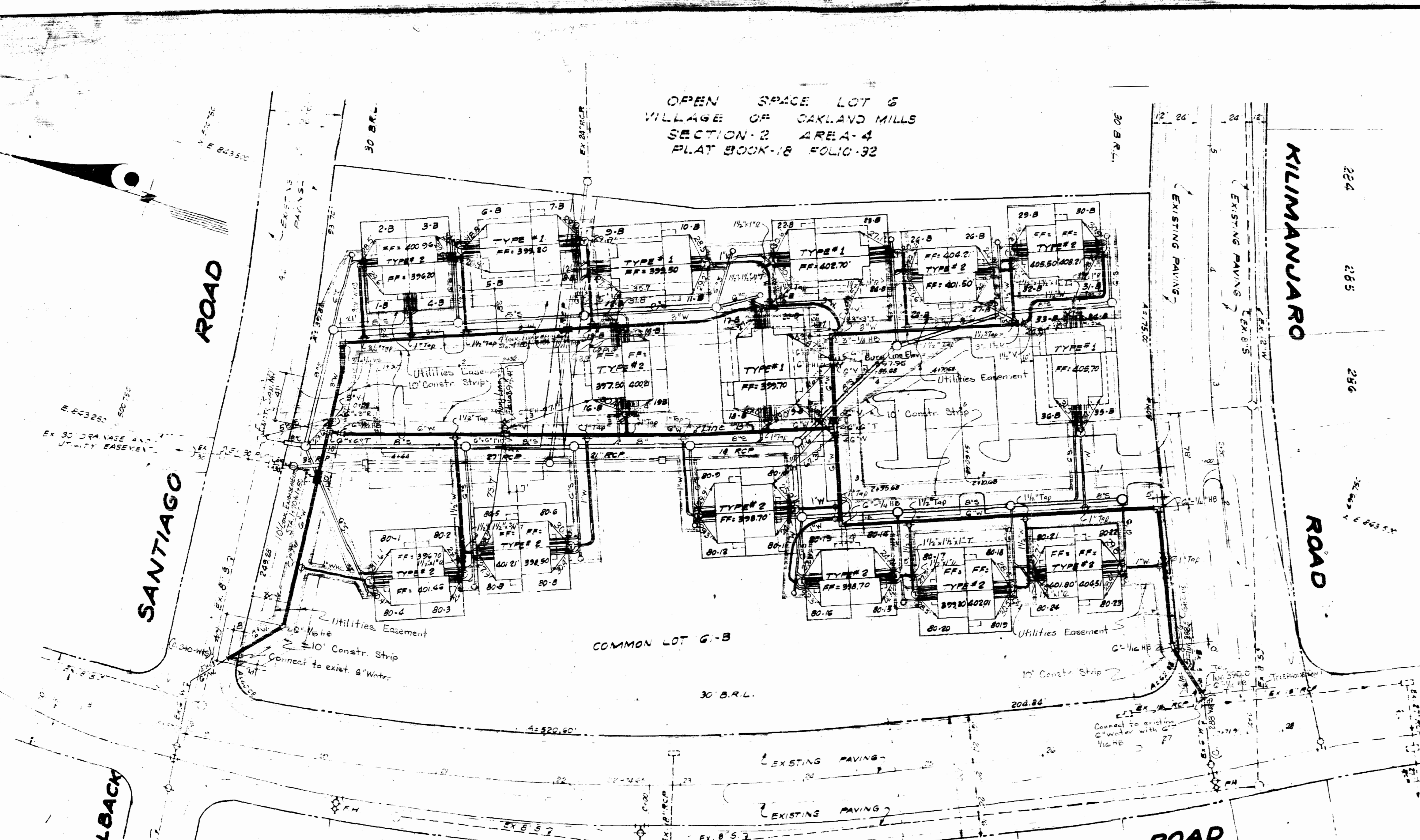
AS-BUILT JULY 21, 1972  
COLUMBIA  
VILLAGE OF OAKLAND MILLS  
SEC 5 AREA 1 RE SUB LOT 80  
SEC 2 AREA 4 PARCEL "B"

DRAWING NO. 1 OF 2  
SCALE AS SHOWN

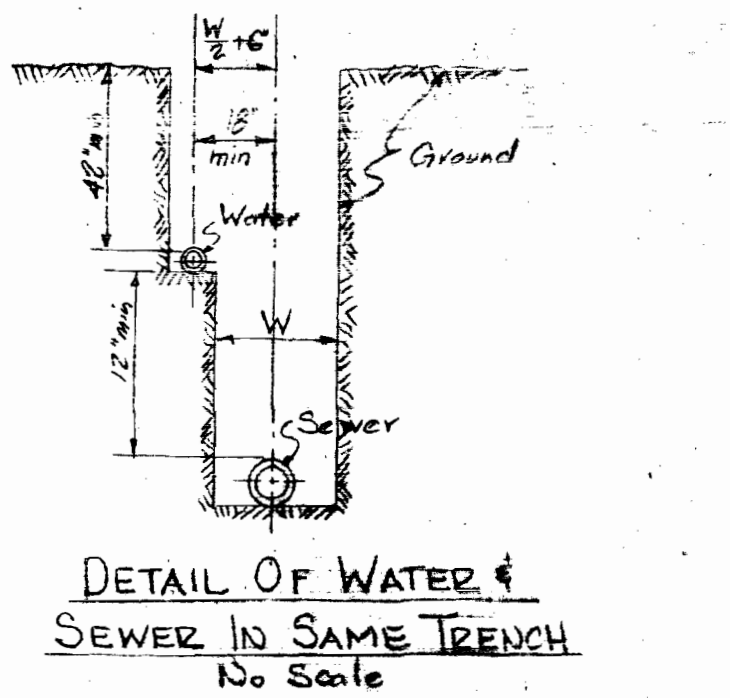
DES. M.S.  
DRAW. J.S.  
CHK. P.S.  
12-8-71  
Date



OPEN SPACE LOT 6  
VILLAGE OF OAKLAND MILLS  
SECTION 2 AREA 4  
PLAT BOOK 18 FOLIO 32

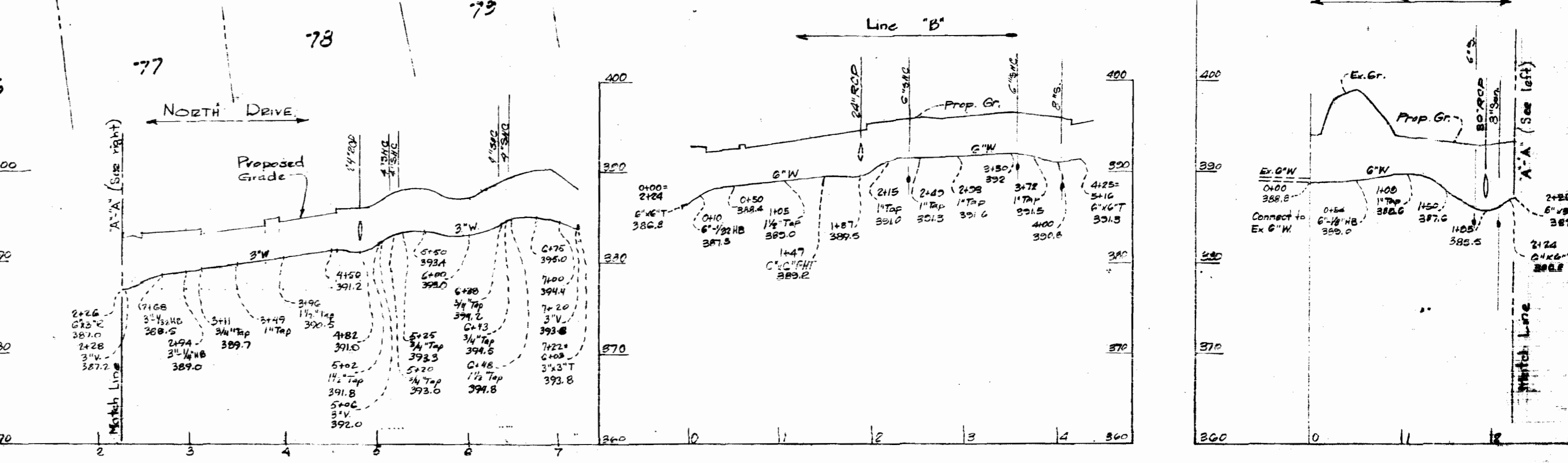


QUANTITIES	
ITEM	AMOUNT
6" Water	1230 LF
8" Water	765 LF
1 1/2" Water	510 LF
1" Water	840 LF
3/4" Water	100 LF
8" Sewer	1245 LF
6" Sewer	1639 LF
Fire HYDRANT	2 Ea.



- WATER NOTES**
- 1) Location of existing water from plans by Whitman, Requaardt & Assoc.
  - 2) All water mains to be laid with a minimum of 3'-5" cover unless otherwise noted.
  - 3) For details of dual house connections see detail right this sheet.
  - 4) All water house connections shall have valves.
  - 5) All construction & materials shall be in accordance with Howard County Standards.
  - 6) Contractor shall verify location & elevation of all existing utility lines @ least 2 weeks before proceeding with this construction.
  - 7) Contractor shall verify location of W.H. & S.H. connections @ buildings before proceeding with construction of onsite facilities.
  - 8) All water mains shall be C.I.P., D.I.P. or A.C.P.X. unless otherwise noted.
  - 9) All 1 1/2" & 1" water to be copper, type "K".
  - 10) All W.H. & S.H. to be 3/4" copper, type "K".
  - 11) All W. & S.H. connections to be laid in same trench, see detail right.
  - 12) All fittings to be blocked with concrete, see standards bound in specifications.
  - 13) Contractor shall take all necessary precautions to protect existing mains & service connections and maintain uninterrupted supply. Any damage incurred shall be repaired immediately.
  - 14) All pipe elevations shown are invert (I) elevations.
  - 15) For all standard details see standards bound in specifications.
  - 16) Clear all utilities by a minimum of 6", all poles by a minimum of 2'-0" or tunnel as required.
  - 17) Fire hydrants shall be set @ the bury line elevations shown on drawings.
  - 18) Fire hydrants shall be strapped to trees and buttressed with concrete in accordance with standard details.
  - 19) All valves shall be strapped to trees in accordance with standard details.
  - 20) Costs of strapping fire hydrants & valves to trees shall be included in the unit price bid for furnishing & laying of water mains.

- PLAN**  
Scale: 1"=50'
- 21) Contractor shall notify The Balto. Gas & Electric Co. 72 hours in advance of excavation, by calling 301-539-8000 Ext. 69.
  - 22) Contractor shall notify the C & R Telephone Co. prior to any construction in the vicinity of any telephone Co. facilities by calling collect 301-685-0400 in Balto. Md.
  - 23) All water meters to be either twin 5/8" meters (Furnished by others) or single 5/8" meters (Furnished by others) as indicated.
  - 24) Single meters shown thus (I) Twin meters shown thus (II)
  - 25) Hydraulic Gradient = 700'
  - 26) Coordinates shown are based on Maryland State Datum.



**PROFILE**  
Scale: Hor 1"=100'  
Vert 1"=10'

Robert  
Robert

AS-BUILT JULY 21, 1972

**GREENHORNE & O'MARA, INC.**  
ENGINEERS ARCHITECTS PLANNERS  
SURVEYORS  
6715 KENILWORTH AVENUE  
RIVERDALE, MARYLAND

**HOWARD COUNTY DEPARTMENT OF PUBLIC WORKS**  
1-13-72 *W.D. Gilbert*  
Date

CONTRACT NO. 464-D-WBS

PLAN & PROFILES  
WATER MAINS

**COLUMBIA**  
VILLAGE OF OAKLAND MILLS  
SEC 5 AREA 1 RE SUB LOT 80  
SEC 2 AREA 4 PARCEL B

DRAWING  
NO. 1  
OF 2  
SCALE  
AS SHOWN